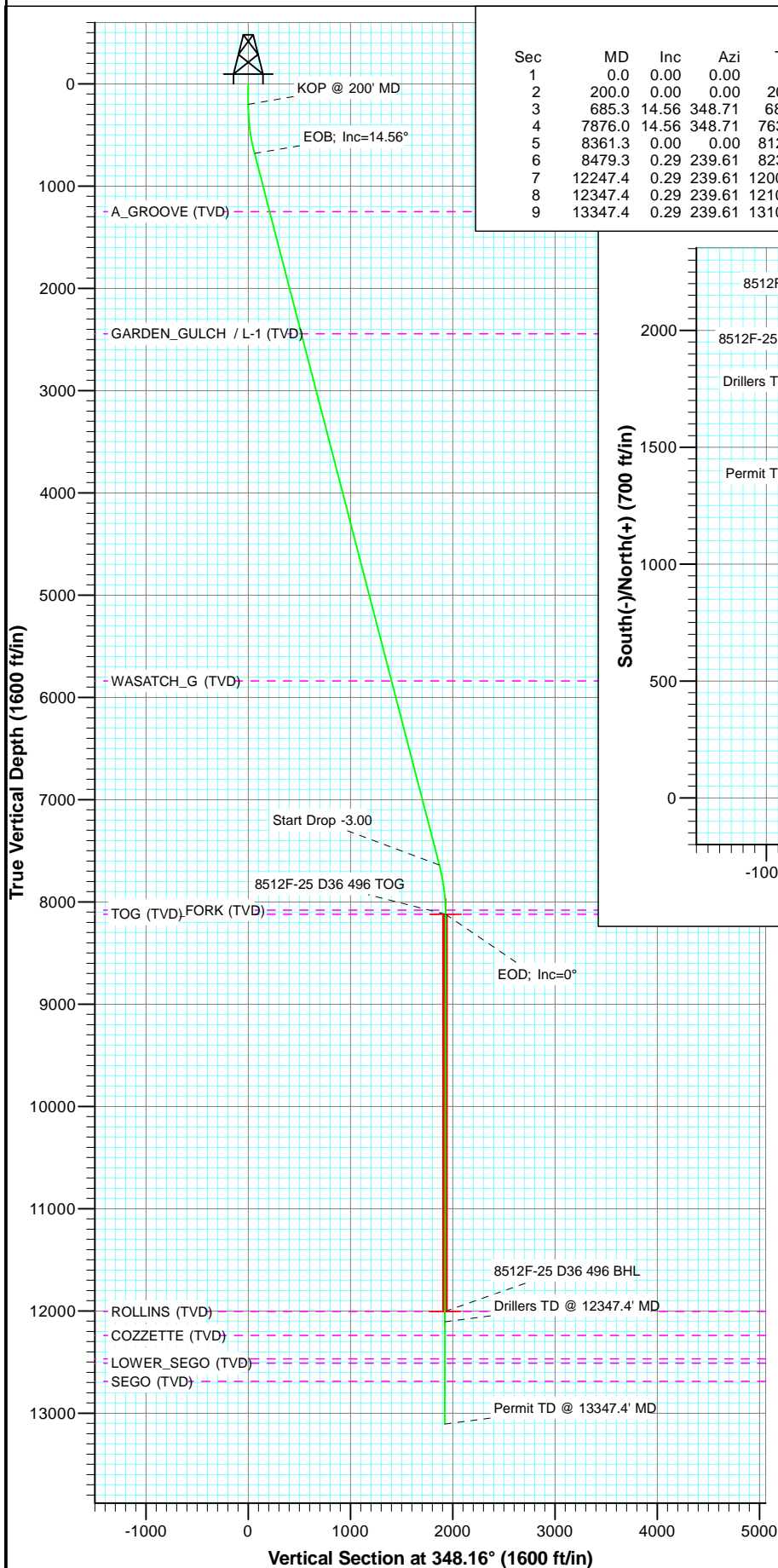


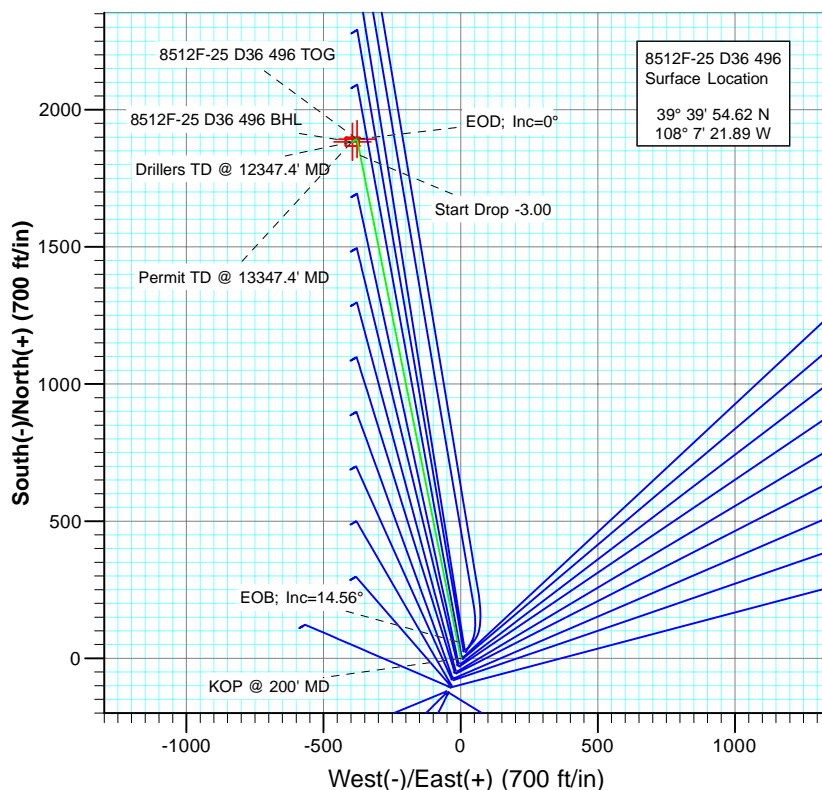


Project: Story Gulch
Site: S36-T4S-R96W (D36 496)
Well: 8512F-25 D36 496
Wellbore: DD
Plan: Plan #1



SECTION DETAILS

Sec	MD	Inc	Azi	TVD	+N/-S	+E/-W	Dleg	TFace	V Sect	Target
1	0.0	0.00	0.00	0.0	0.0	0.0	0.00	0.00	0.0	
2	200.0	0.00	0.00	200.0	0.0	0.0	0.00	0.00	0.0	
3	685.3	14.56	348.71	680.1	60.1	-12.0	3.00	348.71	61.3	
4	7876.0	14.56	348.71	7639.9	1832.9	-365.9	0.00	0.00	1868.9	
5	8361.3	0.00	0.00	8120.0	1893.0	-377.9	3.00	180.00	1930.3	8512F-25 D36 496 TOG
6	8479.3	0.29	239.61	8237.9	1892.8	-378.2	0.25	239.61	1930.2	
7	12247.4	0.29	239.61	12006.0	1883.0	-394.9	0.00	0.00	1924.0	8512F-25 D36 496 BHL
8	12347.4	0.29	239.61	12106.0	1882.8	-395.3	0.00	0.00	1923.8	
9	13347.4	0.29	239.61	13106.0	1880.2	-399.8	0.00	0.00	1922.2	



FORMATION TOP DETAILS

TVDPath	MDPath	Formation
1251.0	1275.1	A_GROOVE (TVD)
2445.0	2508.8	GARDEN_GULCH / L-1 (TVD)
5839.0	6015.4	WASATCH_G (TVD)
8080.0	8321.3	WILLIAMS_FORK (TVD)
8120.0	8361.3	TOG (TVD)
12006.0	12247.4	ROLLINS (TVD)
12239.0	12480.4	COZZETTE (TVD)
12470.0	12711.4	CORCORAN (TVD)
12511.0	12752.4	LOWER_SEGO (TVD)
12689.0	12930.4	SEGO (TVD)



Azimuths to True North
Magnetic North: 10.44°

Magnetic Field
Strength: 52310.9nT
Dip Angle: 65.86°
Date: 5/31/2011
Model: IGRF2010

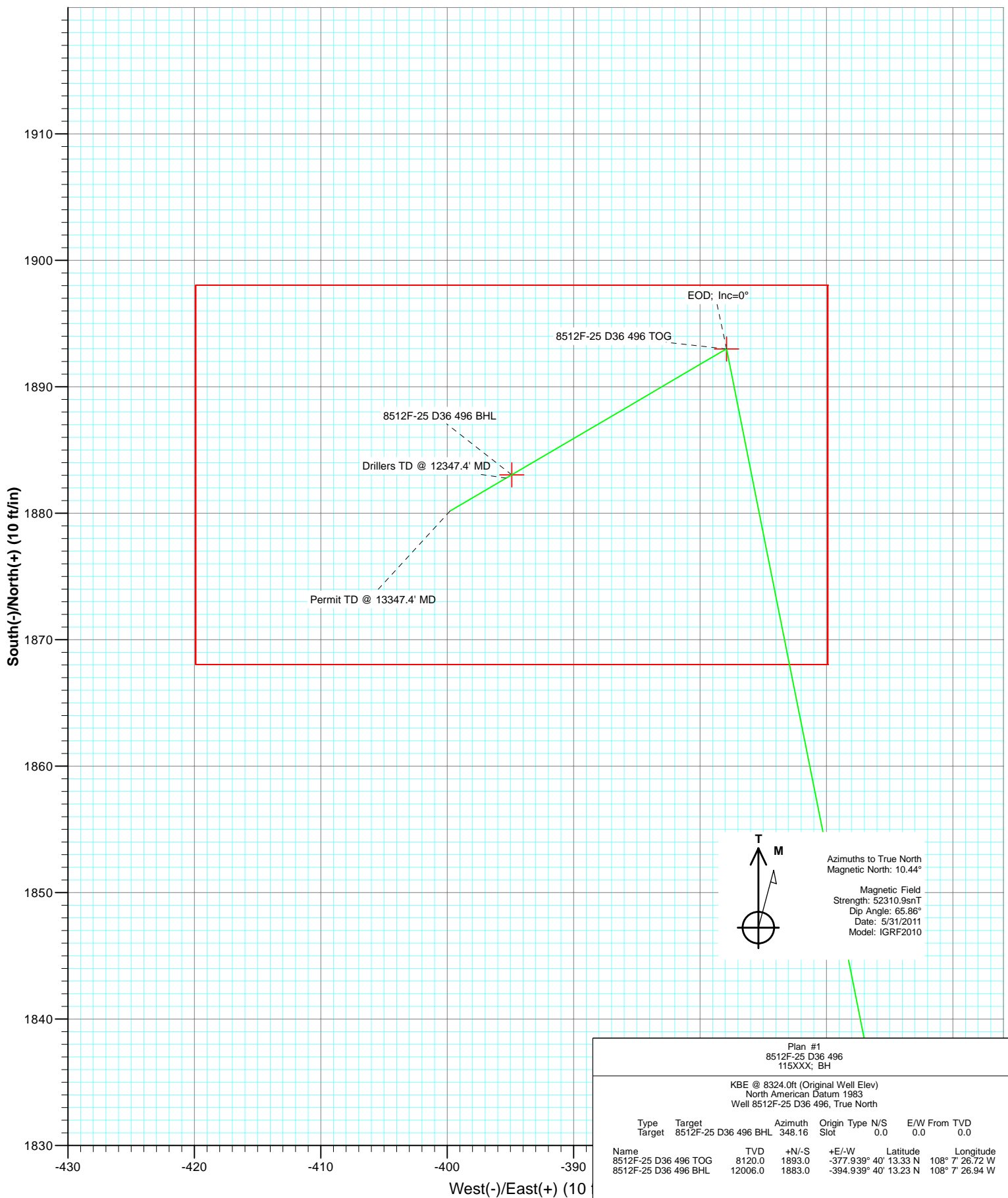
Plan #1
8512F-25 D36 496
115XXX; BH

KBE @ 8324.0ft (Original Well Elev)
North American Datum 1983
Well 8512F-25 D36 496, True North

Type	Target	Target	Azimuth	Origin	Type	N/S	E/W	From	TVD
	Target	8512F-25 D36 496 BHL	348.16	Slot		0.0	0.0		0.0
Name		TVD	+N/-S	Latitude					
8512F-25 D36 496 TOG	8120.0	1893.0	-377.939° 40'	13.33 N	108° 7' 26.72 W				
8512F-25 D36 496 BHL	12006.0	1883.0	-394.939° 40'	13.23 N	108° 7' 26.94 W				



Project: Story Gulch
 Site: S36-T4S-R96W (D36 496)
 Well: 8512F-25 D36 496
 Wellbore: DD
 Plan: Plan #1



Plan #1						
8512F-25 D36 496						
115XXX; BH						
KBE @ 8324.0ft (Original Well Elev)						
North American Datum 1983						
Well 8512F-25 D36 496, True North						
Type	Target	Target	Target	Target	Target	Target
Type	Target	Target	Target	Target	Target	Target
8512F-25 D36 496 TOG	8120.0	1893.0	-377.939° 40'	13.33 N	108° 7' 26.72 W	
8512F-25 D36 496 BHL	12006.0	1883.0	-394.939° 40'	13.23 N	108° 7' 26.94 W	

Cathedral Energy Services

Planning Report

Database:	EDM 5000.1 US Multi Users DB	Local Co-ordinate Reference:	Well 8512F-25 D36 496
Company:	EnCana Oil & Gas (USA) Inc	TVD Reference:	KBE @ 8324.0ft (Original Well Elev)
Project:	Story Gulch	MD Reference:	KBE @ 8324.0ft (Original Well Elev)
Site:	S36-T4S-R96W (D36 496)	North Reference:	True
Well:	8512F-25 D36 496	Survey Calculation Method:	Minimum Curvature
Wellbore:	DD		
Design:	Plan #1		

Project	Story Gulch		
Map System:	US State Plane 1983	System Datum:	Mean Sea Level
Geo Datum:	North American Datum 1983		
Map Zone:	Colorado Central Zone		

Site		S36-T4S-R96W (D36 496)			
Site Position:		Northing:	1,677,676.10 ft	Latitude:	39° 39' 53.09 N
From:	Lat/Long	Easting:	2,261,675.01 ft	Longitude:	108° 7' 22.74 W
Position Uncertainty:	0.0 ft	Slot Radius:	13.200 in	Grid Convergence:	-1.65 °

Well	8512F-25 D36 496					
Well Position	+N/-S	0.0 ft	Northing:	1,677,828.61 ft	Latitude:	39° 39' 54.62 N
	+E/-W	0.0 ft	Easting:	2,261,745.59 ft	Longitude:	108° 7' 21.89 W
Position Uncertainty		0.0 ft	Wellhead Elevation:	ft	Ground Level:	8,302.0 ft

Wellbore	DD				
Magnetics	Model Name	Sample Date	Declination (°)	Dip Angle (°)	Field Strength (nT)
	IGRF2010	5/31/2011	10.44	65.86	52,311

Design	Plan #1				
Audit Notes:					
Version:	Phase:	PLAN	Tie On Depth:	0.0	
Vertical Section:	Depth From (TVD) (ft)	+N/-S (ft)	+E/-W (ft)	Direction (°)	
	0.0	0.0	0.0	348.16	

Plan Sections										
Measured Depth (ft)	Inclination (°)	Azimuth (°)	Vertical Depth (ft)	+N/-S (ft)	+E/-W (ft)	Dogleg Rate (°/100ft)	Build Rate (°/100ft)	Turn Rate (°/100ft)	TFO (°)	Target
0.0	0.00	0.00	0.0	0.0	0.0	0.00	0.00	0.00	0.00	
200.0	0.00	0.00	200.0	0.0	0.0	0.00	0.00	0.00	0.00	
685.3	14.56	348.71	680.1	60.1	-12.0	3.00	3.00	0.00	348.71	
7,876.0	14.56	348.71	7,639.9	1,832.9	-365.9	0.00	0.00	0.00	0.00	
8,361.3	0.00	0.00	8,120.0	1,893.0	-377.9	3.00	-3.00	0.00	180.00	8512F-25 D36 496 TC
8,479.3	0.29	239.61	8,237.9	1,892.8	-378.2	0.25	0.25	-102.10	239.61	
12,247.4	0.29	239.61	12,006.0	1,883.0	-394.9	0.00	0.00	0.00	0.00	8512F-25 D36 496 Bt
12,347.4	0.29	239.61	12,106.0	1,882.8	-395.3	0.00	0.00	0.00	0.00	
13,347.4	0.29	239.61	13,106.0	1,880.2	-399.8	0.00	0.00	0.00	0.00	

Cathedral Energy Services

Planning Report

Database:	EDM 5000.1 US Multi Users DB	Local Co-ordinate Reference:	Well 8512F-25 D36 496
Company:	EnCana Oil & Gas (USA) Inc	TVD Reference:	KBE @ 8324.0ft (Original Well Elev)
Project:	Story Gulch	MD Reference:	KBE @ 8324.0ft (Original Well Elev)
Site:	S36-T4S-R96W (D36 496)	North Reference:	True
Well:	8512F-25 D36 496	Survey Calculation Method:	Minimum Curvature
Wellbore:	DD		
Design:	Plan #1		

Planned Survey

Measured Depth (ft)	Inclination (°)	Azimuth (°)	Vertical Depth (ft)	+N/-S (ft)	+E/-W (ft)	Vertical Section (ft)	Dogleg Rate (°/100ft)	Build Rate (°/100ft)	Comments / Formations
0.0	0.00	0.00	0.0	0.0	0.0	0.0	0.00	0.00	
100.0	0.00	0.00	100.0	0.0	0.0	0.0	0.00	0.00	
200.0	0.00	0.00	200.0	0.0	0.0	0.0	0.00	0.00	KOP @ 200' MD
300.0	3.00	348.71	300.0	2.6	-0.5	2.6	3.00	3.00	
400.0	6.00	348.71	399.6	10.3	-2.0	10.5	3.00	3.00	
500.0	9.00	348.71	498.8	23.1	-4.6	23.5	3.00	3.00	
600.0	12.00	348.71	597.1	40.9	-8.2	41.7	3.00	3.00	
685.3	14.56	348.71	680.1	60.1	-12.0	61.3	3.00	3.00	EOB; Inc=14.56°
700.0	14.56	348.71	694.3	63.8	-12.7	65.0	0.00	0.00	
800.0	14.56	348.71	791.1	88.4	-17.7	90.2	0.00	0.00	
900.0	14.56	348.71	887.9	113.1	-22.6	115.3	0.00	0.00	
1,000.0	14.56	348.71	984.7	137.7	-27.5	140.4	0.00	0.00	
1,100.0	14.56	348.71	1,081.5	162.4	-32.4	165.6	0.00	0.00	
1,200.0	14.56	348.71	1,178.3	187.0	-37.3	190.7	0.00	0.00	
1,275.1	14.56	348.71	1,251.0	205.6	-41.0	209.6	0.00	0.00	A_GROOVE (TVD)
1,300.0	14.56	348.71	1,275.1	211.7	-42.3	215.8	0.00	0.00	
1,400.0	14.56	348.71	1,371.8	236.3	-47.2	241.0	0.00	0.00	
1,500.0	14.56	348.71	1,468.6	261.0	-52.1	266.1	0.00	0.00	
1,600.0	14.56	348.71	1,565.4	285.6	-57.0	291.3	0.00	0.00	
1,700.0	14.56	348.71	1,662.2	310.3	-61.9	316.4	0.00	0.00	
1,800.0	14.56	348.71	1,759.0	334.9	-66.9	341.5	0.00	0.00	
1,900.0	14.56	348.71	1,855.8	359.6	-71.8	366.7	0.00	0.00	
2,000.0	14.56	348.71	1,952.6	384.3	-76.7	391.8	0.00	0.00	
2,100.0	14.56	348.71	2,049.4	408.9	-81.6	417.0	0.00	0.00	
2,200.0	14.56	348.71	2,146.2	433.6	-86.6	442.1	0.00	0.00	
2,300.0	14.56	348.71	2,242.9	458.2	-91.5	467.2	0.00	0.00	
2,400.0	14.56	348.71	2,339.7	482.9	-96.4	492.4	0.00	0.00	
2,500.0	14.56	348.71	2,436.5	507.5	-101.3	517.5	0.00	0.00	
2,508.8	14.56	348.71	2,445.0	509.7	-101.7	519.7	0.00	0.00	GARDEN_GULCH / L-1 (TVD)
2,600.0	14.56	348.71	2,533.3	532.2	-106.2	542.6	0.00	0.00	
2,700.0	14.56	348.71	2,630.1	556.8	-111.2	567.8	0.00	0.00	
2,800.0	14.56	348.71	2,726.9	581.5	-116.1	592.9	0.00	0.00	
2,900.0	14.56	348.71	2,823.7	606.1	-121.0	618.1	0.00	0.00	
3,000.0	14.56	348.71	2,920.5	630.8	-125.9	643.2	0.00	0.00	
3,100.0	14.56	348.71	3,017.2	655.4	-130.8	668.3	0.00	0.00	
3,200.0	14.56	348.71	3,114.0	680.1	-135.8	693.5	0.00	0.00	
3,300.0	14.56	348.71	3,210.8	704.7	-140.7	718.6	0.00	0.00	
3,400.0	14.56	348.71	3,307.6	729.4	-145.6	743.7	0.00	0.00	
3,500.0	14.56	348.71	3,404.4	754.0	-150.5	768.9	0.00	0.00	
3,600.0	14.56	348.71	3,501.2	778.7	-155.5	794.0	0.00	0.00	
3,700.0	14.56	348.71	3,598.0	803.3	-160.4	819.2	0.00	0.00	
3,800.0	14.56	348.71	3,694.8	828.0	-165.3	844.3	0.00	0.00	
3,900.0	14.56	348.71	3,791.6	852.7	-170.2	869.4	0.00	0.00	
4,000.0	14.56	348.71	3,888.3	877.3	-175.1	894.6	0.00	0.00	
4,100.0	14.56	348.71	3,985.1	902.0	-180.1	919.7	0.00	0.00	
4,200.0	14.56	348.71	4,081.9	926.6	-185.0	944.9	0.00	0.00	
4,300.0	14.56	348.71	4,178.7	951.3	-189.9	970.0	0.00	0.00	
4,400.0	14.56	348.71	4,275.5	975.9	-194.8	995.1	0.00	0.00	
4,500.0	14.56	348.71	4,372.3	1,000.6	-199.7	1,020.3	0.00	0.00	
4,600.0	14.56	348.71	4,469.1	1,025.2	-204.7	1,045.4	0.00	0.00	
4,700.0	14.56	348.71	4,565.9	1,049.9	-209.6	1,070.5	0.00	0.00	
4,800.0	14.56	348.71	4,662.7	1,074.5	-214.5	1,095.7	0.00	0.00	

Cathedral Energy Services

Planning Report

Database:	EDM 5000.1 US Multi Users DB	Local Co-ordinate Reference:	Well 8512F-25 D36 496
Company:	EnCana Oil & Gas (USA) Inc	TVD Reference:	KBE @ 8324.0ft (Original Well Elev)
Project:	Story Gulch	MD Reference:	KBE @ 8324.0ft (Original Well Elev)
Site:	S36-T4S-R96W (D36 496)	North Reference:	True
Well:	8512F-25 D36 496	Survey Calculation Method:	Minimum Curvature
Wellbore:	DD		
Design:	Plan #1		

Planned Survey

Measured Depth (ft)	Inclination (°)	Azimuth (°)	Vertical Depth (ft)	+N/-S (ft)	+E/-W (ft)	Vertical Section (ft)	Dogleg Rate (°/100ft)	Build Rate (°/100ft)	Comments / Formations
4,900.0	14.56	348.71	4,759.4	1,099.2	-219.4	1,120.8	0.00	0.00	
5,000.0	14.56	348.71	4,856.2	1,123.8	-224.4	1,146.0	0.00	0.00	
5,100.0	14.56	348.71	4,953.0	1,148.5	-229.3	1,171.1	0.00	0.00	
5,200.0	14.56	348.71	5,049.8	1,173.1	-234.2	1,196.2	0.00	0.00	
5,300.0	14.56	348.71	5,146.6	1,197.8	-239.1	1,221.4	0.00	0.00	
5,400.0	14.56	348.71	5,243.4	1,222.4	-244.0	1,246.5	0.00	0.00	
5,500.0	14.56	348.71	5,340.2	1,247.1	-249.0	1,271.6	0.00	0.00	
5,600.0	14.56	348.71	5,437.0	1,271.8	-253.9	1,296.8	0.00	0.00	
5,700.0	14.56	348.71	5,533.7	1,296.4	-258.8	1,321.9	0.00	0.00	
5,800.0	14.56	348.71	5,630.5	1,321.1	-263.7	1,347.1	0.00	0.00	
5,900.0	14.56	348.71	5,727.3	1,345.7	-268.6	1,372.2	0.00	0.00	
6,000.0	14.56	348.71	5,824.1	1,370.4	-273.6	1,397.3	0.00	0.00	
6,015.4	14.56	348.71	5,839.0	1,374.2	-274.3	1,401.2	0.00	0.00	WASATCH_G (TVD)
6,100.0	14.56	348.71	5,920.9	1,395.0	-278.5	1,422.5	0.00	0.00	
6,200.0	14.56	348.71	6,017.7	1,419.7	-283.4	1,447.6	0.00	0.00	
6,300.0	14.56	348.71	6,114.5	1,444.3	-288.3	1,472.8	0.00	0.00	
6,400.0	14.56	348.71	6,211.3	1,469.0	-293.3	1,497.9	0.00	0.00	
6,500.0	14.56	348.71	6,308.1	1,493.6	-298.2	1,523.0	0.00	0.00	
6,600.0	14.56	348.71	6,404.8	1,518.3	-303.1	1,548.2	0.00	0.00	
6,700.0	14.56	348.71	6,501.6	1,542.9	-308.0	1,573.3	0.00	0.00	
6,800.0	14.56	348.71	6,598.4	1,567.6	-312.9	1,598.4	0.00	0.00	
6,900.0	14.56	348.71	6,695.2	1,592.2	-317.9	1,623.6	0.00	0.00	
7,000.0	14.56	348.71	6,792.0	1,616.9	-322.8	1,648.7	0.00	0.00	
7,100.0	14.56	348.71	6,888.8	1,641.5	-327.7	1,673.9	0.00	0.00	
7,200.0	14.56	348.71	6,985.6	1,666.2	-332.6	1,699.0	0.00	0.00	
7,300.0	14.56	348.71	7,082.4	1,690.8	-337.5	1,724.1	0.00	0.00	
7,400.0	14.56	348.71	7,179.2	1,715.5	-342.5	1,749.3	0.00	0.00	
7,500.0	14.56	348.71	7,275.9	1,740.2	-347.4	1,774.4	0.00	0.00	
7,600.0	14.56	348.71	7,372.7	1,764.8	-352.3	1,799.5	0.00	0.00	
7,700.0	14.56	348.71	7,469.5	1,789.5	-357.2	1,824.7	0.00	0.00	
7,800.0	14.56	348.71	7,566.3	1,814.1	-362.2	1,849.8	0.00	0.00	
7,876.0	14.56	348.71	7,639.9	1,832.9	-365.9	1,868.9	0.00	0.00	Start Drop -3.00
7,900.0	13.84	348.71	7,663.1	1,838.6	-367.0	1,874.8	3.00	-3.00	
8,000.0	10.84	348.71	7,760.8	1,859.6	-371.2	1,896.2	3.00	-3.00	
8,100.0	7.84	348.71	7,859.5	1,875.5	-374.4	1,912.4	3.00	-3.00	
8,200.0	4.84	348.71	7,958.9	1,886.3	-376.6	1,923.5	3.00	-3.00	
8,300.0	1.84	348.71	8,058.7	1,892.0	-377.7	1,929.3	3.00	-3.00	
8,321.3	1.20	348.71	8,080.0	1,892.6	-377.8	1,929.8	3.00	-3.00	WILLIAMS_FORK (TVD)
8,361.3	0.00	0.00	8,120.0	1,893.0	-377.9	1,930.3	3.00	-3.00	EOD; Inc=0° - TOG (TVD) - 8512F-25 D36 496
8,400.0	0.10	239.61	8,158.7	1,893.0	-377.9	1,930.3	0.25	0.25	
8,479.3	0.29	239.61	8,237.9	1,892.8	-378.2	1,930.2	0.25	0.25	
8,500.0	0.29	239.61	8,258.7	1,892.8	-378.3	1,930.1	0.00	0.00	
8,600.0	0.29	239.61	8,358.7	1,892.5	-378.7	1,930.0	0.00	0.00	
8,700.0	0.29	239.61	8,458.7	1,892.3	-379.1	1,929.8	0.00	0.00	
8,800.0	0.29	239.61	8,558.7	1,892.0	-379.6	1,929.6	0.00	0.00	
8,900.0	0.29	239.61	8,658.7	1,891.8	-380.0	1,929.5	0.00	0.00	
9,000.0	0.29	239.61	8,758.7	1,891.5	-380.5	1,929.3	0.00	0.00	
9,100.0	0.29	239.61	8,858.7	1,891.2	-380.9	1,929.1	0.00	0.00	
9,200.0	0.29	239.61	8,958.6	1,891.0	-381.4	1,929.0	0.00	0.00	
9,300.0	0.29	239.61	9,058.6	1,890.7	-381.8	1,928.8	0.00	0.00	
9,400.0	0.29	239.61	9,158.6	1,890.5	-382.2	1,928.7	0.00	0.00	
9,500.0	0.29	239.61	9,258.6	1,890.2	-382.7	1,928.5	0.00	0.00	

Cathedral Energy Services

Planning Report

Database:	EDM 5000.1 US Multi Users DB	Local Co-ordinate Reference:	Well 8512F-25 D36 496
Company:	EnCana Oil & Gas (USA) Inc	TVD Reference:	KBE @ 8324.0ft (Original Well Elev)
Project:	Story Gulch	MD Reference:	KBE @ 8324.0ft (Original Well Elev)
Site:	S36-T4S-R96W (D36 496)	North Reference:	True
Well:	8512F-25 D36 496	Survey Calculation Method:	Minimum Curvature
Wellbore:	DD		
Design:	Plan #1		

Planned Survey									
Measured Depth (ft)	Inclination (°)	Azimuth (°)	Vertical Depth (ft)	+N/-S (ft)	+E/-W (ft)	Vertical Section (ft)	Dogleg Rate (°/100ft)	Build Rate (°/100ft)	Comments / Formations
9,600.0	0.29	239.61	9,358.6	1,889.9	-383.1	1,928.3	0.00	0.00	
9,700.0	0.29	239.61	9,458.6	1,889.7	-383.6	1,928.2	0.00	0.00	
9,800.0	0.29	239.61	9,558.6	1,889.4	-384.0	1,928.0	0.00	0.00	
9,900.0	0.29	239.61	9,658.6	1,889.1	-384.5	1,927.8	0.00	0.00	
10,000.0	0.29	239.61	9,758.6	1,888.9	-384.9	1,927.7	0.00	0.00	
10,100.0	0.29	239.61	9,858.6	1,888.6	-385.4	1,927.5	0.00	0.00	
10,200.0	0.29	239.61	9,958.6	1,888.4	-385.8	1,927.3	0.00	0.00	
10,300.0	0.29	239.61	10,058.6	1,888.1	-386.2	1,927.2	0.00	0.00	
10,400.0	0.29	239.61	10,158.6	1,887.8	-386.7	1,927.0	0.00	0.00	
10,500.0	0.29	239.61	10,258.6	1,887.6	-387.1	1,926.9	0.00	0.00	
10,600.0	0.29	239.61	10,358.6	1,887.3	-387.6	1,926.7	0.00	0.00	
10,700.0	0.29	239.61	10,458.6	1,887.1	-388.0	1,926.5	0.00	0.00	
10,800.0	0.29	239.61	10,558.6	1,886.8	-388.5	1,926.4	0.00	0.00	
10,900.0	0.29	239.61	10,658.6	1,886.5	-388.9	1,926.2	0.00	0.00	
11,000.0	0.29	239.61	10,758.6	1,886.3	-389.3	1,926.0	0.00	0.00	
11,100.0	0.29	239.61	10,858.6	1,886.0	-389.8	1,925.9	0.00	0.00	
11,200.0	0.29	239.61	10,958.6	1,885.8	-390.2	1,925.7	0.00	0.00	
11,300.0	0.29	239.61	11,058.6	1,885.5	-390.7	1,925.5	0.00	0.00	
11,400.0	0.29	239.61	11,158.6	1,885.2	-391.1	1,925.4	0.00	0.00	
11,500.0	0.29	239.61	11,258.6	1,885.0	-391.6	1,925.2	0.00	0.00	
11,600.0	0.29	239.61	11,358.6	1,884.7	-392.0	1,925.1	0.00	0.00	
11,700.0	0.29	239.61	11,458.6	1,884.5	-392.5	1,924.9	0.00	0.00	
11,800.0	0.29	239.61	11,558.6	1,884.2	-392.9	1,924.7	0.00	0.00	
11,900.0	0.29	239.61	11,658.6	1,883.9	-393.3	1,924.6	0.00	0.00	
12,000.0	0.29	239.61	11,758.6	1,883.7	-393.8	1,924.4	0.00	0.00	
12,100.0	0.29	239.61	11,858.6	1,883.4	-394.2	1,924.2	0.00	0.00	
12,200.0	0.29	239.61	11,958.6	1,883.2	-394.7	1,924.1	0.00	0.00	
12,247.4	0.29	239.61	12,006.0	1,883.0	-394.9	1,924.0	0.00	0.00	ROLLINS (TVD) - 8512F-25 D36 496 BHL
12,300.0	0.29	239.61	12,058.6	1,882.9	-395.1	1,923.9	0.00	0.00	
12,347.4	0.29	239.61	12,106.0	1,882.8	-395.3	1,923.8	0.00	0.00	Drillers TD @ 12347.4' MD
12,400.0	0.29	239.61	12,158.6	1,882.6	-395.6	1,923.7	0.00	0.00	
12,480.4	0.29	239.61	12,239.0	1,882.4	-395.9	1,923.6	0.00	0.00	COZZETTE (TVD)
12,500.0	0.29	239.61	12,258.6	1,882.4	-396.0	1,923.6	0.00	0.00	
12,600.0	0.29	239.61	12,358.6	1,882.1	-396.4	1,923.4	0.00	0.00	
12,700.0	0.29	239.61	12,458.6	1,881.9	-396.9	1,923.3	0.00	0.00	
12,711.4	0.29	239.61	12,470.0	1,881.8	-396.9	1,923.2	0.00	0.00	CORCORAN (TVD)
12,752.4	0.29	239.61	12,511.0	1,881.7	-397.1	1,923.2	0.00	0.00	LOWER_SEGO (TVD)
12,800.0	0.29	239.61	12,558.6	1,881.6	-397.3	1,923.1	0.00	0.00	
12,900.0	0.29	239.61	12,658.6	1,881.3	-397.8	1,922.9	0.00	0.00	
12,930.4	0.29	239.61	12,689.0	1,881.3	-397.9	1,922.9	0.00	0.00	SEGO (TVD)
13,000.0	0.29	239.61	12,758.6	1,881.1	-398.2	1,922.8	0.00	0.00	
13,100.0	0.29	239.61	12,858.6	1,880.8	-398.7	1,922.6	0.00	0.00	
13,200.0	0.29	239.61	12,958.6	1,880.6	-399.1	1,922.4	0.00	0.00	
13,300.0	0.29	239.61	13,058.6	1,880.3	-399.6	1,922.3	0.00	0.00	
13,347.4	0.29	239.61	13,106.0	1,880.2	-399.8	1,922.2	0.00	0.00	Permit TD @ 13347.4' MD

Cathedral Energy Services

Planning Report

Database:	EDM 5000.1 US Multi Users DB	Local Co-ordinate Reference:	Well 8512F-25 D36 496
Company:	EnCana Oil & Gas (USA) Inc	TVD Reference:	KBE @ 8324.0ft (Original Well Elev)
Project:	Story Gulch	MD Reference:	KBE @ 8324.0ft (Original Well Elev)
Site:	S36-T4S-R96W (D36 496)	North Reference:	True
Well:	8512F-25 D36 496	Survey Calculation Method:	Minimum Curvature
Wellbore:	DD		
Design:	Plan #1		

Targets									
Target Name									
- hit/miss target	Dip Angle	Dip Dir.	TVD	+N/-S	+E/-W	Northing	Easting	Latitude	Longitude
- Shape	(°)	(°)	(ft)	(ft)	(ft)	(ft)	(ft)		
8512F-25 D36 496 TOG	0.00	0.00	8,120.0	1,893.0	-377.9	1,679,731.73	2,261,422.49	39° 40' 13.33 N	108° 7' 26.72 W
- plan hits target center									
- Point									
8512F-25 D36 496 BHL	0.00	0.00	12,006.0	1,883.0	-394.9	1,679,722.26	2,261,405.23	39° 40' 13.23 N	108° 7' 26.94 W
- plan hits target center									
- Rectangle (sides W30.0 H50.0 D0.0)									

Formations						
Measured Depth	Vertical Depth	Name	Lithology	Dip	Dip Direction	
(ft)	(ft)			(°)	(°)	
1,275.1	1,251.0	A_GROOVE (TVD)				
2,508.8	2,445.0	GARDEN_GULCH / L-1 (TVD)				
6,015.4	5,839.0	WASATCH_G (TVD)				
8,321.3	8,080.0	WILLIAMS_FORK (TVD)				
8,361.3	8,120.0	TOG (TVD)				
12,247.4	12,006.0	ROLLINS (TVD)				
12,480.4	12,239.0	COZZETTE (TVD)				
12,711.4	12,470.0	CORCORAN (TVD)				
12,752.4	12,511.0	LOWER_SEGO (TVD)				
12,930.4	12,689.0	SEGO (TVD)				

Plan Annotations				
Measured Depth	Vertical Depth	Local Coordinates		
(ft)	(ft)	+N/-S (ft)	+E/-W (ft)	Comment
200.0	200.0	0.0	0.0	KOP @ 200' MD
685.3	680.1	60.1	-12.0	EOB; Inc=14.56°
7,876.0	7,639.9	1,832.9	-365.9	Start Drop -3.00
8,361.3	8,120.0	1,893.0	-377.9	EOD; Inc=0°
12,347.4	12,106.0	1,892.8	-378.2	Drillers TD @ 12347.4' MD
13,347.4	13,106.0	1,883.0	-394.9	Permit TD @ 13347.4' MD