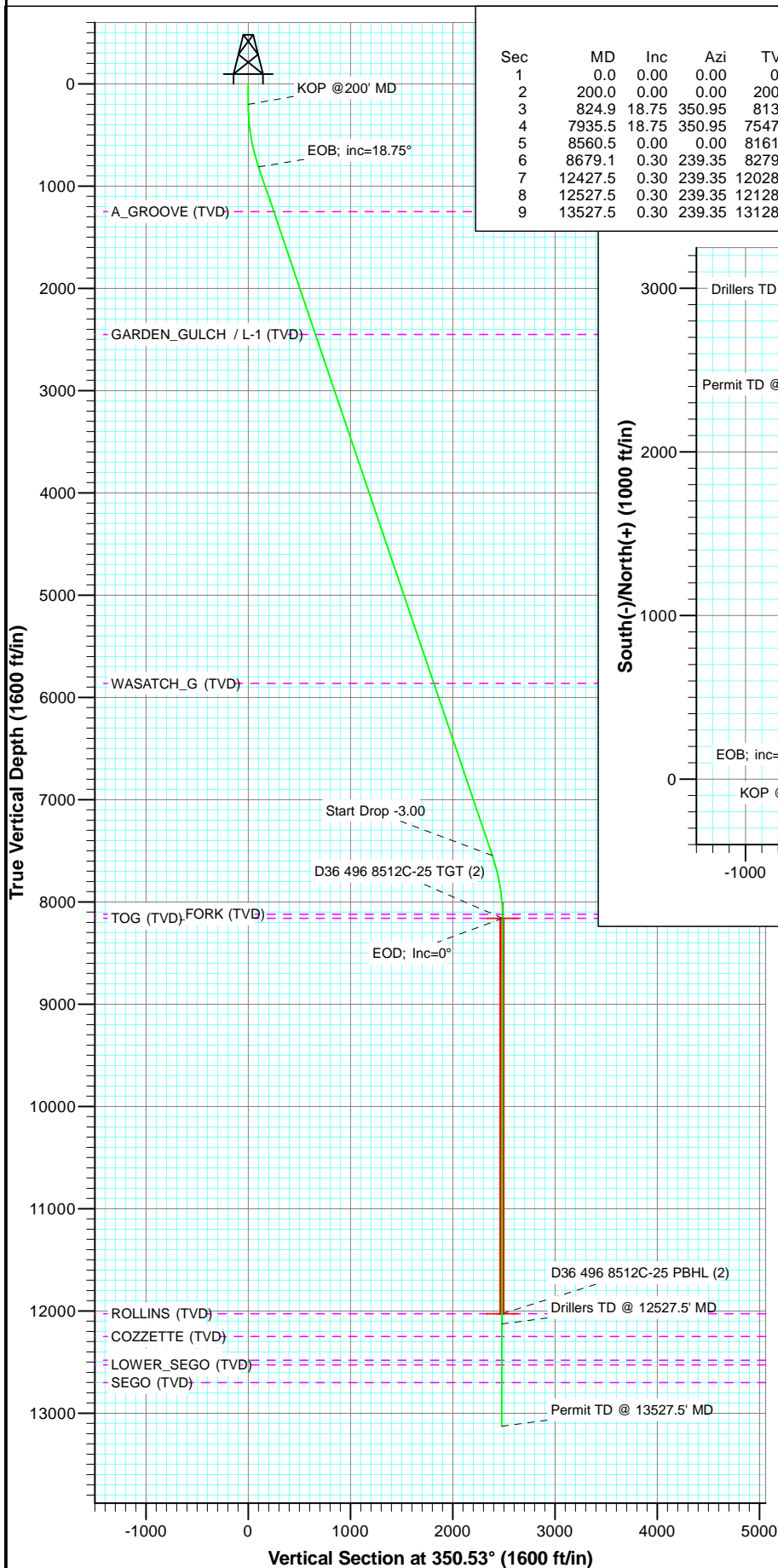
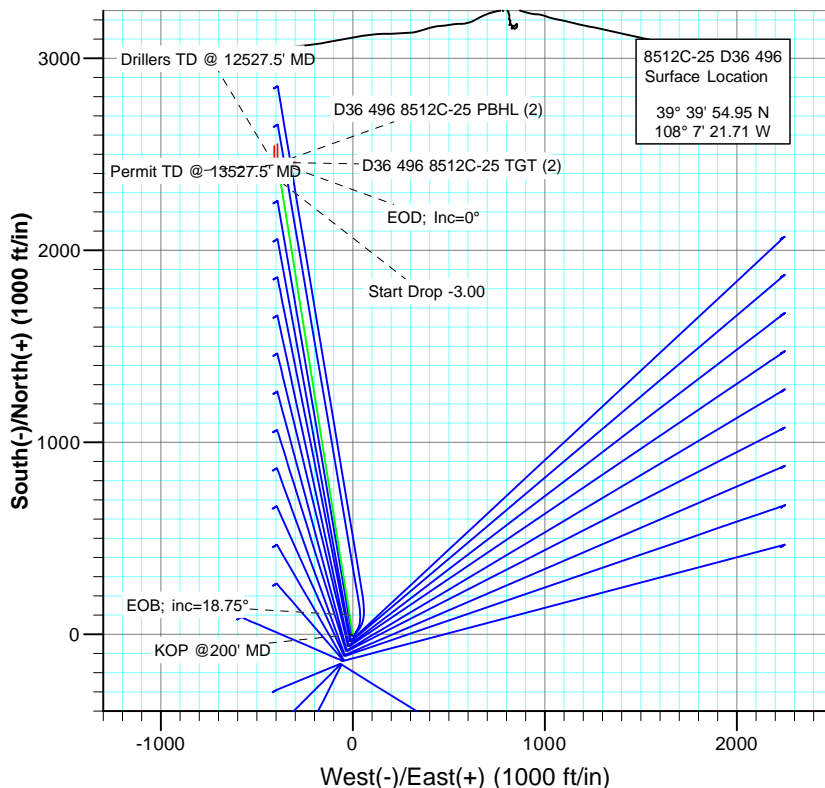




Project: Story Gulch
Site: S36-T4S-R96W (D36 496)
Well: 8512C-25 D36 496
Wellbore: DD
Plan: Plan #2



SECTION DETAILS										
Sec	MD	Inc	Azi	TVD	+N/-S	+E/-W	Dleg	TFace	VSect	Target
1	0.0	0.00	0.00	0.0	0.0	0.0	0.00	0.00	0.0	
2	200.0	0.00	0.00	200.0	0.0	0.0	0.00	0.00	0.0	
3	824.9	18.75	350.95	813.8	100.1	-15.9	3.00	350.95	101.3	
4	7935.5	18.75	350.95	7547.2	2357.0	-375.3	0.00	0.00	2386.6	
5	8560.5	0.00	0.00	8161.0	2457.1	-391.2	3.00	180.00	2488.0	D36 496 8512C-25 TGT (2)
6	8679.1	0.30	239.35	8279.7	2456.9	-391.5	0.25	239.35	2487.9	
7	12427.5	0.30	239.35	12028.0	2447.1	-408.2	0.00	0.00	2480.9	D36 496 8512C-25 PBHL (2)
8	12527.5	0.30	239.35	12128.0	2446.8	-408.6	0.00	0.00	2480.7	
9	13527.5	0.30	239.35	13128.0	2444.1	-413.1	0.00	0.00	2478.8	



FORMATION TOP DETAILS		
TVDPath	MDPath	Formation
1251.0	1286.6	A_GROOVE (TVD)
2452.0	2554.9	GARDEN_GULCH / L-1 (TVD)
5863.0	6157.0	WASATCH_G (TVD)
8121.0	8520.5	WILLIAMS_FORK (TVD)
8161.0	8560.5	TOG (TVD)
12028.0	12427.5	ROLLINS (TVD)
12250.0	12649.5	COZZETTE (TVD)
12483.0	12882.5	CORCORAN (TVD)
12527.0	12926.5	LOWER_SEGO (TVD)
12701.0	13100.5	SEGO (TVD)



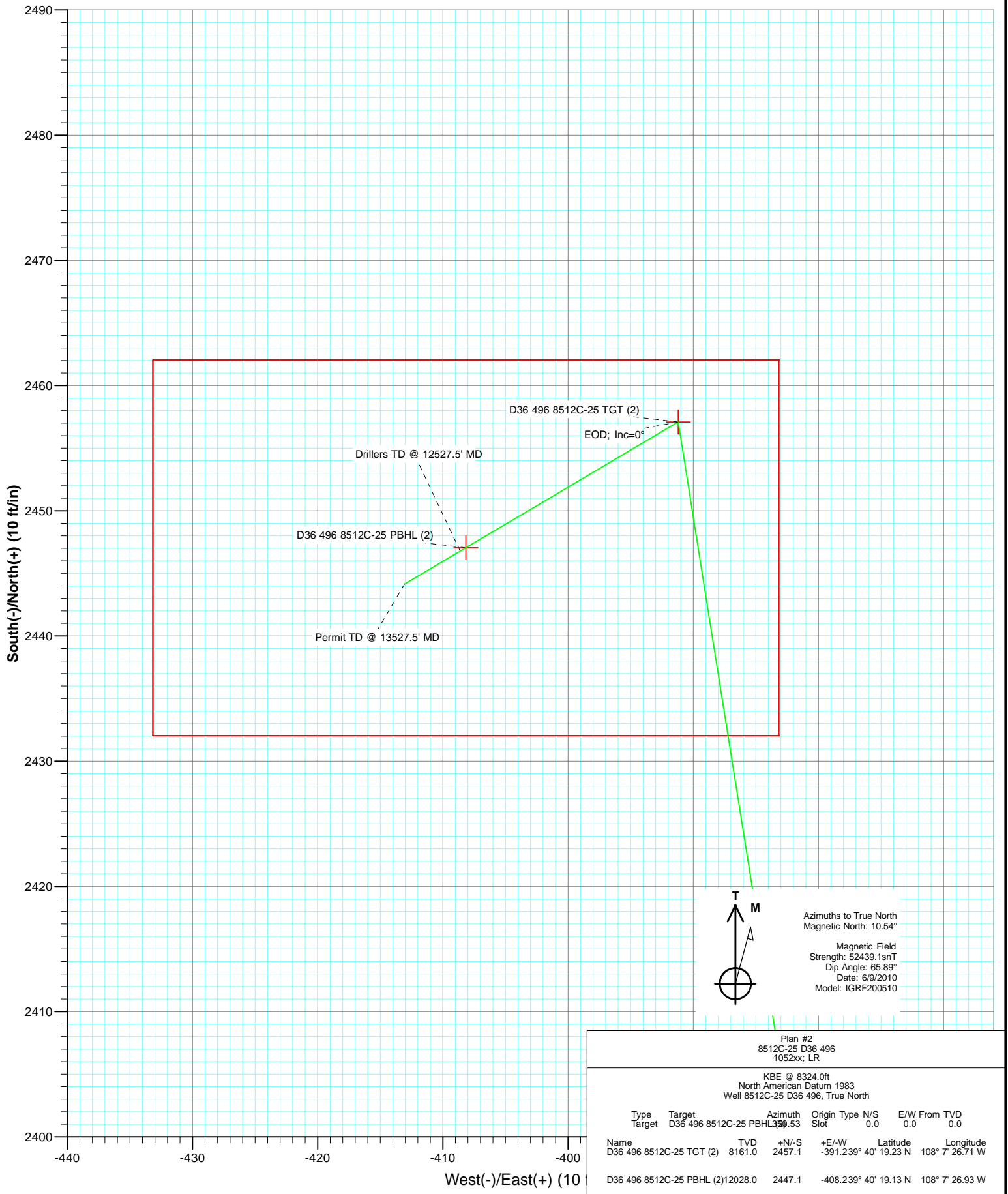
Azimuths to True North
Magnetic North: 10.54°

Magnetic Field
Strength: 52439.1nT
Dip Angle: 65.89°
Date: 6/9/2010
Model: IGRF200510

Plan #2 8512C-25 D36 496 1052xx; LR						
KBE @ 8324.0ft North American Datum 1983 Well 8512C-25 D36 496, True North						
Type	Target	Azimuth	Origin	Type	N/S	E/W From TVD
Target	D36 496 8512C-25 PBHL (2)	350.53	Slot		0.0	0.0
Name	Target	TVD	+N/-S	+E/-W	Latitude	Longitude
D36 496 8512C-25 TGT (2)	8161.0	2457.1	-391.239° 40'	19.23 N	108° 7' 26.71 W	
D36 496 8512C-25 PBHL (2)	12028.0	2447.1	-408.239° 40'	19.13 N	108° 7' 26.93 W	



Project: Story Gulch
Site: S36-T4S-R96W (D36 496)
Well: 8512C-25 D36 496
Wellbore: DD
Plan: Plan #2



Cathedral Energy Services

Planning Report

Database:	EDM 5000.1 US Multi Users DB	Local Co-ordinate Reference:	Well 8512C-25 D36 496
Company:	EnCana Oil & Gas (USA) Inc	TVD Reference:	KBE @ 8324.0ft
Project:	Story Gulch	MD Reference:	KBE @ 8324.0ft
Site:	S36-T4S-R96W (D36 496)	North Reference:	True
Well:	8512C-25 D36 496	Survey Calculation Method:	Minimum Curvature
Wellbore:	DD		
Design:	Plan #2		

Project	Story Gulch		
Map System:	US State Plane 1983	System Datum:	Mean Sea Level
Geo Datum:	North American Datum 1983		
Map Zone:	Colorado Central Zone		

Site		S36-T4S-R96W (D36 496)			
Site Position:		Northing:	1,677,676.10 ft	Latitude:	39° 39' 53.09 N
From:	Lat/Long	Easting:	2,261,675.01 ft	Longitude:	108° 7' 22.74 W
Position Uncertainty:	0.0 ft	Slot Radius:	13.200 in	Grid Convergence:	-1.65 °

Well	8512C-25 D36 496					
Well Position	+N/-S	0.0 ft	Northing:	1,677,861.16 ft	Latitude:	39° 39' 54.95 N
	+E/-W	0.0 ft	Easting:	2,261,760.60 ft	Longitude:	108° 7' 21.71 W
Position Uncertainty		0.0 ft	Wellhead Elevation:	ft	Ground Level:	8,302.0 ft

Wellbore	DD				
Magnetics	Model Name	Sample Date	Declination (°)	Dip Angle (°)	Field Strength (nT)
	IGRF200510	6/9/2010	10.54	65.89	52,439

Design	Plan #2			
Audit Notes:				
Version:	Phase:	PLAN	Tie On Depth:	0.0
Vertical Section:	Depth From (TVD) (ft)	+N/-S (ft)	+E/-W (ft)	Direction (°)
	0.0	0.0	0.0	350.53

Plan Sections										
Measured Depth (ft)	Inclination (°)	Azimuth (°)	Vertical Depth (ft)	+N/-S (ft)	+E/-W (ft)	Dogleg Rate (°/100ft)	Build Rate (°/100ft)	Turn Rate (°/100ft)	TFO (°)	Target
0.0	0.00	0.00	0.0	0.0	0.0	0.00	0.00	0.00	0.00	
200.0	0.00	0.00	200.0	0.0	0.0	0.00	0.00	0.00	0.00	
824.9	18.75	350.95	813.8	100.1	-15.9	3.00	3.00	0.00	350.95	
7,935.5	18.75	350.95	7,547.2	2,357.0	-375.3	0.00	0.00	0.00	0.00	
8,560.5	0.00	0.00	8,161.0	2,457.1	-391.2	3.00	-3.00	0.00	180.00	D36 496 8512C-25 TC
8,679.1	0.30	239.35	8,279.7	2,456.9	-391.5	0.25	0.25	-101.68	239.35	
12,427.5	0.30	239.35	12,028.0	2,447.1	-408.2	0.00	0.00	0.00	0.00	D36 496 8512C-25 PI
12,527.5	0.30	239.35	12,128.0	2,446.8	-408.6	0.00	0.00	0.00	0.00	
13,527.5	0.30	239.35	13,128.0	2,444.1	-413.1	0.00	0.00	0.00	0.00	

Cathedral Energy Services

Planning Report

Database:	EDM 5000.1 US Multi Users DB	Local Co-ordinate Reference:	Well 8512C-25 D36 496
Company:	EnCana Oil & Gas (USA) Inc	TVD Reference:	KBE @ 8324.0ft
Project:	Story Gulch	MD Reference:	KBE @ 8324.0ft
Site:	S36-T4S-R96W (D36 496)	North Reference:	True
Well:	8512C-25 D36 496	Survey Calculation Method:	Minimum Curvature
Wellbore:	DD		
Design:	Plan #2		

Planned Survey

Measured Depth (ft)	Inclination (°)	Azimuth (°)	Vertical Depth (ft)	+N/-S (ft)	+E/-W (ft)	Vertical Section (ft)	Dogleg Rate (°/100ft)	Build Rate (°/100ft)	Comments / Formations
0.0	0.00	0.00	0.0	0.0	0.0	0.0	0.00	0.00	
100.0	0.00	0.00	100.0	0.0	0.0	0.0	0.00	0.00	
200.0	0.00	0.00	200.0	0.0	0.0	0.0	0.00	0.00	KOP @200' MD
300.0	3.00	350.95	300.0	2.6	-0.4	2.6	3.00	3.00	
400.0	6.00	350.95	399.6	10.3	-1.6	10.5	3.00	3.00	
500.0	9.00	350.95	498.8	23.2	-3.7	23.5	3.00	3.00	
600.0	12.00	350.95	597.1	41.2	-6.6	41.7	3.00	3.00	
700.0	15.00	350.95	694.3	64.3	-10.2	65.1	3.00	3.00	
800.0	18.00	350.95	790.2	92.3	-14.7	93.5	3.00	3.00	
824.9	18.75	350.95	813.8	100.1	-15.9	101.3	3.00	3.00	EOB; inc=18.75°
900.0	18.75	350.95	884.9	123.9	-19.7	125.5	0.00	0.00	
1,000.0	18.75	350.95	979.6	155.6	-24.8	157.6	0.00	0.00	
1,100.0	18.75	350.95	1,074.3	187.4	-29.8	189.7	0.00	0.00	
1,200.0	18.75	350.95	1,169.0	219.1	-34.9	221.9	0.00	0.00	
1,286.6	18.75	350.95	1,251.0	246.6	-39.3	249.7	0.00	0.00	A_GROOVE (TVD)
1,300.0	18.75	350.95	1,263.7	250.9	-39.9	254.0	0.00	0.00	
1,400.0	18.75	350.95	1,358.4	282.6	-45.0	286.2	0.00	0.00	
1,500.0	18.75	350.95	1,453.1	314.3	-50.0	318.3	0.00	0.00	
1,600.0	18.75	350.95	1,547.8	346.1	-55.1	350.4	0.00	0.00	
1,700.0	18.75	350.95	1,642.5	377.8	-60.2	382.6	0.00	0.00	
1,800.0	18.75	350.95	1,737.2	409.6	-65.2	414.7	0.00	0.00	
1,900.0	18.75	350.95	1,831.9	441.3	-70.3	446.9	0.00	0.00	
2,000.0	18.75	350.95	1,926.6	473.0	-75.3	479.0	0.00	0.00	
2,100.0	18.75	350.95	2,021.3	504.8	-80.4	511.1	0.00	0.00	
2,200.0	18.75	350.95	2,115.9	536.5	-85.4	543.3	0.00	0.00	
2,300.0	18.75	350.95	2,210.6	568.3	-90.5	575.4	0.00	0.00	
2,400.0	18.75	350.95	2,305.3	600.0	-95.5	607.6	0.00	0.00	
2,500.0	18.75	350.95	2,400.0	631.8	-100.6	639.7	0.00	0.00	
2,554.9	18.75	350.95	2,452.0	649.2	-103.4	657.3	0.00	0.00	GARDEN_GULCH / L-1 (TVD)
2,600.0	18.75	350.95	2,494.7	663.5	-105.6	671.8	0.00	0.00	
2,700.0	18.75	350.95	2,589.4	695.2	-110.7	704.0	0.00	0.00	
2,800.0	18.75	350.95	2,684.1	727.0	-115.7	736.1	0.00	0.00	
2,900.0	18.75	350.95	2,778.8	758.7	-120.8	768.2	0.00	0.00	
3,000.0	18.75	350.95	2,873.5	790.5	-125.9	800.4	0.00	0.00	
3,100.0	18.75	350.95	2,968.2	822.2	-130.9	832.5	0.00	0.00	
3,200.0	18.75	350.95	3,062.9	853.9	-136.0	864.7	0.00	0.00	
3,300.0	18.75	350.95	3,157.6	885.7	-141.0	896.8	0.00	0.00	
3,400.0	18.75	350.95	3,252.3	917.4	-146.1	928.9	0.00	0.00	
3,500.0	18.75	350.95	3,347.0	949.2	-151.1	961.1	0.00	0.00	
3,600.0	18.75	350.95	3,441.7	980.9	-156.2	993.2	0.00	0.00	
3,700.0	18.75	350.95	3,536.4	1,012.6	-161.2	1,025.4	0.00	0.00	
3,800.0	18.75	350.95	3,631.1	1,044.4	-166.3	1,057.5	0.00	0.00	
3,900.0	18.75	350.95	3,725.8	1,076.1	-171.3	1,089.6	0.00	0.00	
4,000.0	18.75	350.95	3,820.4	1,107.9	-176.4	1,121.8	0.00	0.00	
4,100.0	18.75	350.95	3,915.1	1,139.6	-181.4	1,153.9	0.00	0.00	
4,200.0	18.75	350.95	4,009.8	1,171.3	-186.5	1,186.1	0.00	0.00	
4,300.0	18.75	350.95	4,104.5	1,203.1	-191.5	1,218.2	0.00	0.00	
4,400.0	18.75	350.95	4,199.2	1,234.8	-196.6	1,250.3	0.00	0.00	
4,500.0	18.75	350.95	4,293.9	1,266.6	-201.7	1,282.5	0.00	0.00	
4,600.0	18.75	350.95	4,388.6	1,298.3	-206.7	1,314.6	0.00	0.00	
4,700.0	18.75	350.95	4,483.3	1,330.0	-211.8	1,346.8	0.00	0.00	
4,800.0	18.75	350.95	4,578.0	1,361.8	-216.8	1,378.9	0.00	0.00	

Cathedral Energy Services

Planning Report

Database:	EDM 5000.1 US Multi Users DB	Local Co-ordinate Reference:	Well 8512C-25 D36 496
Company:	EnCana Oil & Gas (USA) Inc	TVD Reference:	KBE @ 8324.0ft
Project:	Story Gulch	MD Reference:	KBE @ 8324.0ft
Site:	S36-T4S-R96W (D36 496)	North Reference:	True
Well:	8512C-25 D36 496	Survey Calculation Method:	Minimum Curvature
Wellbore:	DD		
Design:	Plan #2		

Planned Survey

Measured Depth (ft)	Inclination (°)	Azimuth (°)	Vertical Depth (ft)	+N/-S (ft)	+E/-W (ft)	Vertical Section (ft)	Dogleg Rate (°/100ft)	Build Rate (°/100ft)	Comments / Formations
4,900.0	18.75	350.95	4,672.7	1,393.5	-221.9	1,411.0	0.00	0.00	
5,000.0	18.75	350.95	4,767.4	1,425.3	-226.9	1,443.2	0.00	0.00	
5,100.0	18.75	350.95	4,862.1	1,457.0	-232.0	1,475.3	0.00	0.00	
5,200.0	18.75	350.95	4,956.8	1,488.8	-237.0	1,507.5	0.00	0.00	
5,300.0	18.75	350.95	5,051.5	1,520.5	-242.1	1,539.6	0.00	0.00	
5,400.0	18.75	350.95	5,146.2	1,552.2	-247.1	1,571.7	0.00	0.00	
5,500.0	18.75	350.95	5,240.9	1,584.0	-252.2	1,603.9	0.00	0.00	
5,600.0	18.75	350.95	5,335.6	1,615.7	-257.2	1,636.0	0.00	0.00	
5,700.0	18.75	350.95	5,430.2	1,647.5	-262.3	1,668.2	0.00	0.00	
5,800.0	18.75	350.95	5,524.9	1,679.2	-267.3	1,700.3	0.00	0.00	
5,900.0	18.75	350.95	5,619.6	1,710.9	-272.4	1,732.4	0.00	0.00	
6,000.0	18.75	350.95	5,714.3	1,742.7	-277.5	1,764.6	0.00	0.00	
6,100.0	18.75	350.95	5,809.0	1,774.4	-282.5	1,796.7	0.00	0.00	
6,157.0	18.75	350.95	5,863.0	1,792.5	-285.4	1,815.0	0.00	0.00	WASATCH_G (TVD)
6,200.0	18.75	350.95	5,903.7	1,806.2	-287.6	1,828.9	0.00	0.00	
6,300.0	18.75	350.95	5,998.4	1,837.9	-292.6	1,861.0	0.00	0.00	
6,400.0	18.75	350.95	6,093.1	1,869.6	-297.7	1,893.1	0.00	0.00	
6,500.0	18.75	350.95	6,187.8	1,901.4	-302.7	1,925.3	0.00	0.00	
6,600.0	18.75	350.95	6,282.5	1,933.1	-307.8	1,957.4	0.00	0.00	
6,700.0	18.75	350.95	6,377.2	1,964.9	-312.8	1,989.6	0.00	0.00	
6,800.0	18.75	350.95	6,471.9	1,996.6	-317.9	2,021.7	0.00	0.00	
6,900.0	18.75	350.95	6,566.6	2,028.3	-322.9	2,053.8	0.00	0.00	
7,000.0	18.75	350.95	6,661.3	2,060.1	-328.0	2,086.0	0.00	0.00	
7,100.0	18.75	350.95	6,756.0	2,091.8	-333.0	2,118.1	0.00	0.00	
7,200.0	18.75	350.95	6,850.7	2,123.6	-338.1	2,150.3	0.00	0.00	
7,300.0	18.75	350.95	6,945.4	2,155.3	-343.2	2,182.4	0.00	0.00	
7,400.0	18.75	350.95	7,040.0	2,187.0	-348.2	2,214.5	0.00	0.00	
7,500.0	18.75	350.95	7,134.7	2,218.8	-353.3	2,246.7	0.00	0.00	
7,600.0	18.75	350.95	7,229.4	2,250.5	-358.3	2,278.8	0.00	0.00	
7,700.0	18.75	350.95	7,324.1	2,282.3	-363.4	2,311.0	0.00	0.00	
7,800.0	18.75	350.95	7,418.8	2,314.0	-368.4	2,343.1	0.00	0.00	
7,900.0	18.75	350.95	7,513.5	2,345.7	-373.5	2,375.2	0.00	0.00	
7,935.5	18.75	350.95	7,547.2	2,357.0	-375.3	2,386.6	0.00	0.00	Start Drop -3.00
8,000.0	16.81	350.95	7,608.6	2,376.5	-378.4	2,406.3	3.00	-3.00	
8,100.0	13.81	350.95	7,705.0	2,402.5	-382.5	2,432.7	3.00	-3.00	
8,200.0	10.81	350.95	7,802.7	2,423.6	-385.9	2,454.1	3.00	-3.00	
8,300.0	7.81	350.95	7,901.3	2,439.6	-388.4	2,470.2	3.00	-3.00	
8,400.0	4.81	350.95	8,000.7	2,450.4	-390.1	2,481.2	3.00	-3.00	
8,500.0	1.81	350.95	8,100.6	2,456.2	-391.0	2,487.0	3.00	-3.00	
8,520.5	1.20	350.95	8,121.0	2,456.7	-391.1	2,487.6	3.00	-3.00	WILLIAMS_FORK (TVD)
8,560.5	0.00	0.00	8,161.0	2,457.1	-391.2	2,488.0	3.00	-3.00	EOD; Inc=0° - TOG (TVD) - D36 496 8512C-25
8,600.0	0.10	239.35	8,200.5	2,457.1	-391.2	2,488.0	0.25	0.25	
8,679.1	0.30	239.35	8,279.7	2,456.9	-391.5	2,487.9	0.25	0.25	
8,700.0	0.30	239.35	8,300.5	2,456.9	-391.6	2,487.8	0.00	0.00	
8,744.4	0.30	239.35	8,344.9	2,456.8	-391.8	2,487.7	0.00	0.00	D36 496 8512C-25 TGT
8,800.0	0.30	239.35	8,400.5	2,456.6	-392.0	2,487.6	0.00	0.00	
8,900.0	0.30	239.35	8,500.5	2,456.4	-392.4	2,487.5	0.00	0.00	
9,000.0	0.30	239.35	8,600.5	2,456.1	-392.9	2,487.3	0.00	0.00	
9,100.0	0.30	239.35	8,700.5	2,455.8	-393.3	2,487.1	0.00	0.00	
9,200.0	0.30	239.35	8,800.5	2,455.6	-393.8	2,486.9	0.00	0.00	
9,300.0	0.30	239.35	8,900.5	2,455.3	-394.2	2,486.7	0.00	0.00	
9,400.0	0.30	239.35	9,000.5	2,455.0	-394.7	2,486.5	0.00	0.00	

Cathedral Energy Services

Planning Report

Database:	EDM 5000.1 US Multi Users DB	Local Co-ordinate Reference:	Well 8512C-25 D36 496
Company:	EnCana Oil & Gas (USA) Inc	TVD Reference:	KBE @ 8324.0ft
Project:	Story Gulch	MD Reference:	KBE @ 8324.0ft
Site:	S36-T4S-R96W (D36 496)	North Reference:	True
Well:	8512C-25 D36 496	Survey Calculation Method:	Minimum Curvature
Wellbore:	DD		
Design:	Plan #2		

Planned Survey									
Measured Depth (ft)	Inclination (°)	Azimuth (°)	Vertical Depth (ft)	+N/-S (ft)	+E/-W (ft)	Vertical Section (ft)	Dogleg Rate (°/100ft)	Build Rate (°/100ft)	Comments / Formations
9,500.0	0.30	239.35	9,100.5	2,454.8	-395.1	2,486.3	0.00	0.00	
9,600.0	0.30	239.35	9,200.5	2,454.5	-395.6	2,486.1	0.00	0.00	
9,700.0	0.30	239.35	9,300.5	2,454.2	-396.0	2,486.0	0.00	0.00	
9,800.0	0.30	239.35	9,400.5	2,454.0	-396.5	2,485.8	0.00	0.00	
9,900.0	0.30	239.35	9,500.5	2,453.7	-396.9	2,485.6	0.00	0.00	
10,000.0	0.30	239.35	9,600.5	2,453.5	-397.3	2,485.4	0.00	0.00	
10,100.0	0.30	239.35	9,700.5	2,453.2	-397.8	2,485.2	0.00	0.00	
10,200.0	0.30	239.35	9,800.5	2,452.9	-398.2	2,485.0	0.00	0.00	
10,300.0	0.30	239.35	9,900.5	2,452.7	-398.7	2,484.8	0.00	0.00	
10,400.0	0.30	239.35	10,000.5	2,452.4	-399.1	2,484.6	0.00	0.00	
10,500.0	0.30	239.35	10,100.5	2,452.1	-399.6	2,484.5	0.00	0.00	
10,600.0	0.30	239.35	10,200.5	2,451.9	-400.0	2,484.3	0.00	0.00	
10,700.0	0.30	239.35	10,300.5	2,451.6	-400.5	2,484.1	0.00	0.00	
10,800.0	0.30	239.35	10,400.5	2,451.3	-400.9	2,483.9	0.00	0.00	
10,900.0	0.30	239.35	10,500.5	2,451.1	-401.4	2,483.7	0.00	0.00	
11,000.0	0.30	239.35	10,600.5	2,450.8	-401.8	2,483.5	0.00	0.00	
11,100.0	0.30	239.35	10,700.5	2,450.6	-402.2	2,483.3	0.00	0.00	
11,200.0	0.30	239.35	10,800.5	2,450.3	-402.7	2,483.2	0.00	0.00	
11,300.0	0.30	239.35	10,900.5	2,450.0	-403.1	2,483.0	0.00	0.00	
11,400.0	0.30	239.35	11,000.5	2,449.8	-403.6	2,482.8	0.00	0.00	
11,500.0	0.30	239.35	11,100.5	2,449.5	-404.0	2,482.6	0.00	0.00	
11,600.0	0.30	239.35	11,200.5	2,449.2	-404.5	2,482.4	0.00	0.00	
11,700.0	0.30	239.35	11,300.5	2,449.0	-404.9	2,482.2	0.00	0.00	
11,800.0	0.30	239.35	11,400.5	2,448.7	-405.4	2,482.0	0.00	0.00	
11,900.0	0.30	239.35	11,500.5	2,448.4	-405.8	2,481.8	0.00	0.00	
12,000.0	0.30	239.35	11,600.5	2,448.2	-406.3	2,481.7	0.00	0.00	
12,100.0	0.30	239.35	11,700.5	2,447.9	-406.7	2,481.5	0.00	0.00	
12,200.0	0.30	239.35	11,800.5	2,447.7	-407.1	2,481.3	0.00	0.00	
12,300.0	0.30	239.35	11,900.5	2,447.4	-407.6	2,481.1	0.00	0.00	
12,400.0	0.30	239.35	12,000.5	2,447.1	-408.0	2,480.9	0.00	0.00	
12,404.3	0.30	239.35	12,004.8	2,447.1	-408.1	2,480.9	0.00	0.00	D36 496 8512C-25 PBHL
12,427.5	0.30	239.35	12,028.0	2,447.1	-408.2	2,480.9	0.00	0.00	ROLLINS (TVD) - D36 496 8512C-25 PBHL (2)
12,500.0	0.30	239.35	12,100.5	2,446.9	-408.5	2,480.7	0.00	0.00	
12,527.5	0.30	239.35	12,128.0	2,446.8	-408.6	2,480.7	0.00	0.00	Drillers TD @ 12527.5' MD
12,600.0	0.30	239.35	12,200.5	2,446.6	-408.9	2,480.5	0.00	0.00	
12,649.5	0.30	239.35	12,250.0	2,446.5	-409.1	2,480.4	0.00	0.00	COZZETTE (TVD)
12,700.0	0.30	239.35	12,300.5	2,446.3	-409.4	2,480.3	0.00	0.00	
12,800.0	0.30	239.35	12,400.5	2,446.1	-409.8	2,480.2	0.00	0.00	
12,882.5	0.30	239.35	12,483.0	2,445.8	-410.2	2,480.0	0.00	0.00	CORCORAN (TVD)
12,900.0	0.30	239.35	12,500.5	2,445.8	-410.3	2,480.0	0.00	0.00	
12,926.5	0.30	239.35	12,527.0	2,445.7	-410.4	2,479.9	0.00	0.00	LOWER_SEGO (TVD)
13,000.0	0.30	239.35	12,600.5	2,445.5	-410.7	2,479.8	0.00	0.00	
13,100.0	0.30	239.35	12,700.5	2,445.3	-411.2	2,479.6	0.00	0.00	
13,100.5	0.30	239.35	12,701.0	2,445.3	-411.2	2,479.6	0.00	0.00	SEGO (TVD)
13,200.0	0.30	239.35	12,800.5	2,445.0	-411.6	2,479.4	0.00	0.00	
13,300.0	0.30	239.35	12,900.5	2,444.7	-412.0	2,479.2	0.00	0.00	
13,400.0	0.30	239.35	13,000.5	2,444.5	-412.5	2,479.0	0.00	0.00	
13,500.0	0.30	239.35	13,100.5	2,444.2	-412.9	2,478.9	0.00	0.00	
13,527.5	0.30	239.35	13,128.0	2,444.1	-413.1	2,478.8	0.00	0.00	Permit TD @ 13527.5' MD

Cathedral Energy Services

Planning Report

Database:	EDM 5000.1 US Multi Users DB	Local Co-ordinate Reference:	Well 8512C-25 D36 496
Company:	EnCana Oil & Gas (USA) Inc	TVD Reference:	KBE @ 8324.0ft
Project:	Story Gulch	MD Reference:	KBE @ 8324.0ft
Site:	S36-T4S-R96W (D36 496)	North Reference:	True
Well:	8512C-25 D36 496	Survey Calculation Method:	Minimum Curvature
Wellbore:	DD		
Design:	Plan #2		

Targets									
Target Name									
- hit/miss target	Dip Angle	Dip Dir.	TVD	+N/-S	+E/-W	Northing	Easting	Latitude	Longitude
- Shape	(°)	(°)	(ft)	(ft)	(ft)	(ft)	(ft)		
D36 496 8512C-25 TGT	0.00	0.00	8,344.0	2,142.5	-406.6	1,680,014.49	2,261,416.02	39° 40' 16.12 N	108° 7' 26.91 W
- plan misses target center by 314.6ft at 8744.4ft MD (8344.9 TVD, 2456.8 N, -391.8 E)									
- Point									
D36 496 8512C-25 PBH	0.00	0.00	12,004.0	2,142.5	-406.6	1,680,014.49	2,261,416.02	39° 40' 16.12 N	108° 7' 26.91 W
- plan misses target center by 304.6ft at 12404.3ft MD (12004.8 TVD, 2447.1 N, -408.1 E)									
- Rectangle (sides W30.0 H50.0 D0.0)									
D36 496 8512C-25 TGT	0.00	0.00	8,161.0	2,457.1	-391.2	1,680,328.53	2,261,440.49	39° 40' 19.23 N	108° 7' 26.71 W
- plan hits target center									
- Point									
D36 496 8512C-25 PBH	0.00	0.00	12,028.0	2,447.1	-408.2	1,680,318.97	2,261,423.25	39° 40' 19.13 N	108° 7' 26.93 W
- plan hits target center									
- Rectangle (sides W30.0 H50.0 D0.0)									

Formations						
Measured Depth	Vertical Depth	Name	Lithology	Dip	Dip Direction	
(ft)	(ft)			(°)	(°)	
1,286.6	1,251.0	A_GROOVE (TVD)				
2,554.9	2,452.0	GARDEN_GULCH / L-1 (TVD)				
6,157.0	5,863.0	WASATCH_G (TVD)				
8,520.5	8,121.0	WILLIAMS_FORK (TVD)				
8,560.5	8,161.0	TOG (TVD)				
12,427.5	12,028.0	ROLLINS (TVD)				
12,649.5	12,250.0	COZZETTE (TVD)				
12,882.5	12,483.0	CORCORAN (TVD)				
12,926.5	12,527.0	LOWER_SEGO (TVD)				
13,100.5	12,701.0	SEGO (TVD)				

Plan Annotations					
Measured Depth	Vertical Depth	Local Coordinates			
(ft)	(ft)	+N/-S (ft)	+E/-W (ft)	Comment	
200.0	200.0	0.0	0.0	KOP @200' MD	
824.9	813.8	100.1	-15.9	EOB; inc=18.75°	
7,935.5	7,547.2	2,357.0	-375.3	Start Drop -3.00	
8,560.5	8,161.0	2,457.1	-391.2	EOD; Inc=0°	
12,527.5	12,128.0	2,456.9	-391.5	Drillers TD @ 12527.5' MD	
13,527.5	13,128.0	2,447.1	-408.2	Permit TD @ 13527.5' MD	