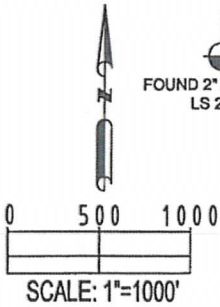
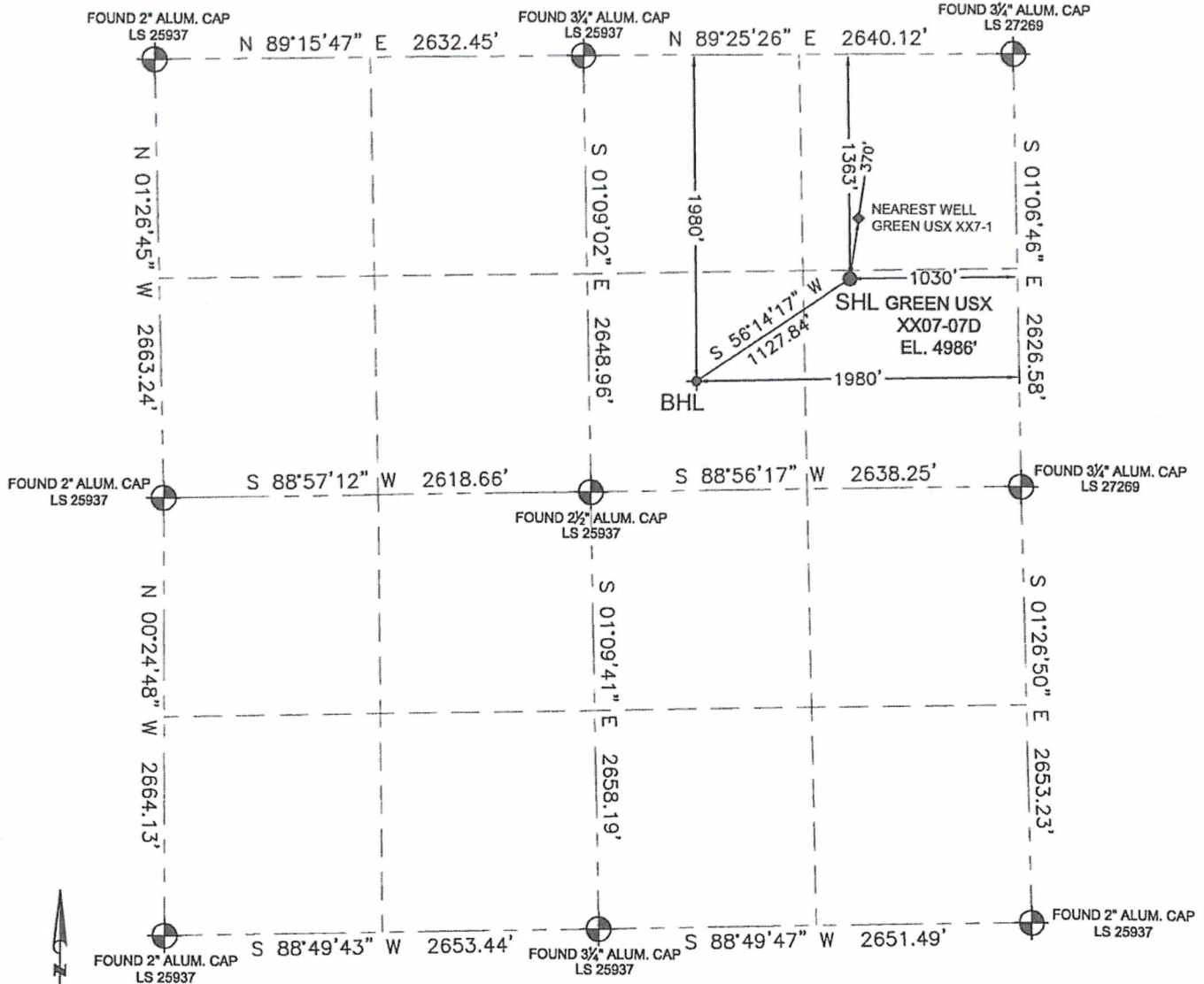


WELL LOCATION CERTIFICATE

THIS MAP DOES NOT REPRESENT A BOUNDARY SURVEY

SECTION: 7
TOWNSHIP: 1N
RANGE: 65W



In accordance with a request from CJ Pietri with Noble Energy Inc. Petroleum Field Services, LLC has determined the surface location of the GREEN USX XX07-07D to be 1363' from the NORTH line and 1030' from the EAST line and the bottom hole to be 1980' from the NORTH line and 1980' from the EAST line as measured at right angles from the section line of Section 7, Township 1 North, Range 65 West of the Sixth Principal Meridian, County of Weld, State of Colorado.

I hereby state that this Well Location Certificate was prepared by me, or under my direct supervision, that the fieldwork was completed on 5/16/ 11, for and on behalf of Noble Energy Inc., that this is not a Land Survey Plat or an Improvement Survey Plat, and that it is not to be relied upon for establishment of fence, building, or other future improvement lines.

Note:

- 1) Bearings shown are Grid Bearings of the Colorado State Plane Coordinate System, North Zone, North American Datum 1983/2007. The lineal dimensions as contained herein are based upon the "U.S. Survey Foot."
- 2) Ground elevations are based on an observed GPS elevation (NAVD 1988 DATUM).
- 3) NEAREST EXISTING WELL: GREEN USX XX7-1 is 370' NORTHEAST
- 4) IMPROVEMENTS: See LOCATION DRAWING exhibit for all visible improvements within 400' of disturbed area.
- 5) SURFACE USE: RANGELAND
- 6) INSTRUMENT OPERATOR: DON JOHNSON

Note:

According to Colorado law, you must commence any legal action based upon any defect in this W.L.C. within three years after you first discover such defect. In no event, may any action based upon any defect in this survey be commenced more than ten years after the date of this certification shown hereon. (13-80-105 C.R.S.)

LEGEND

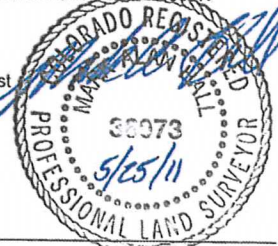
- = FOUND MONUMENT
- = PROPOSED WELL
- ◆ = BOTTOM HOLE
- ◆ = EXISTING WELL

SURFACE LOCATION:

LATITUDE: 40.06951°N
LONGITUDE: 104.70093°W
PDOP: 1.79
ELEV: 4986'
¼ ¼: SE¼NE¼
NEAREST PROPERTY LINE: 289' West

BOTTOM HOLE:

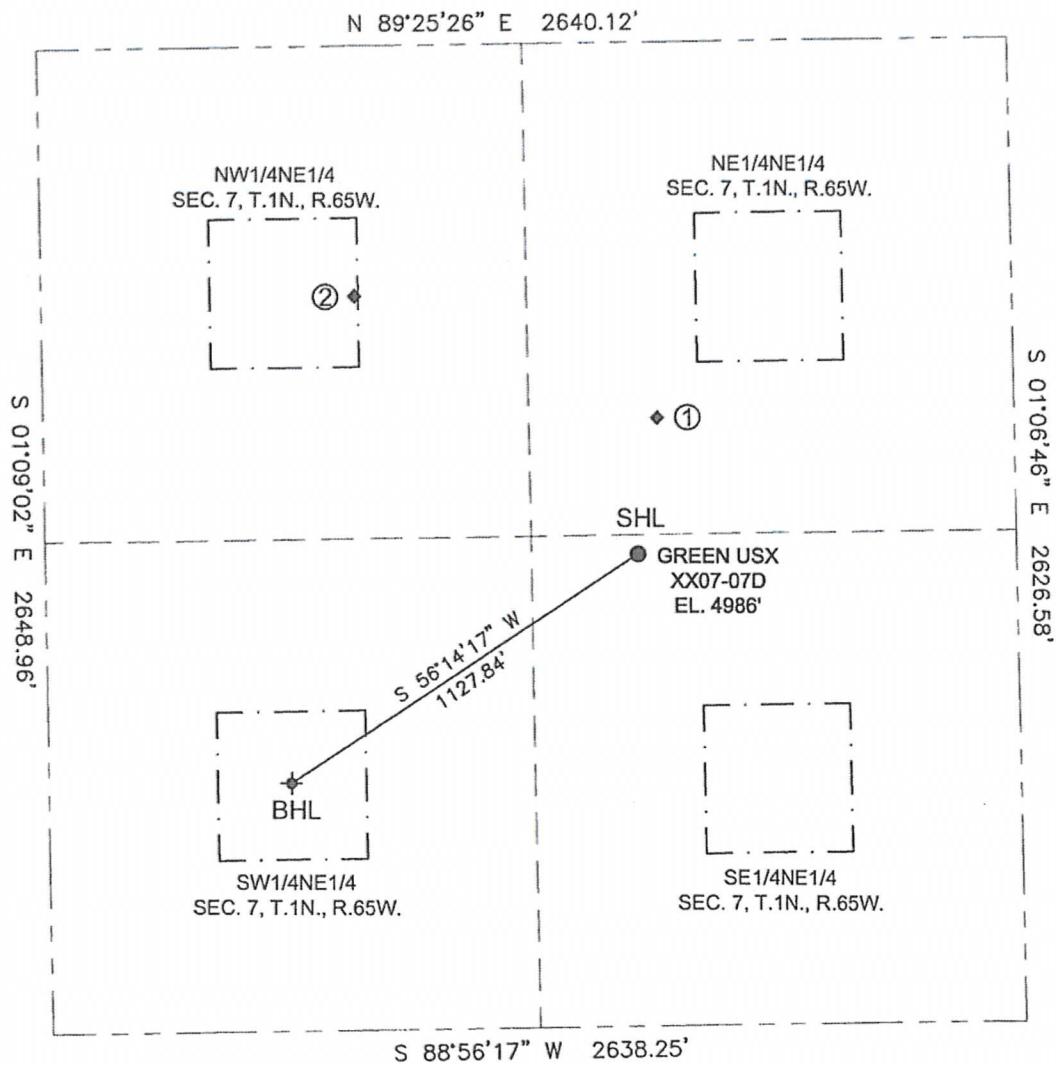
LATITUDE: 40.06781°N
LONGITUDE: 104.70180°W



MARK A. HALL, PLS 36073
COLORADO LICENSED PROFESSIONAL LAND SURVEYOR
FOR AND ON BEHALF OF P.F.S., LLC

SITE SKETCH

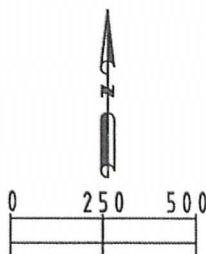
SECTION: 7
TOWNSHIP: 1N
RANGE: 65W



- | | |
|---|--|
| ① GREEN USX XX7-1
NE/NE
1010' FNL
971' FEL
LAT--40.07052°N
LONG--104.70073°W
PDOP:1.79
ELEV: 4991' | ② GREEN 31-7
NW/NE
672' FNL
1789' FWL
LAT--40.07142°N
LONG--104.70366°W
PDOP:1.79
ELEV: 4990' |
|---|--|

LEGEND

- = PROPOSED WELL
- ⊕ = BOTTOM HOLE
- ◆ = EXISTING WELL



SCALE: 1"=500'