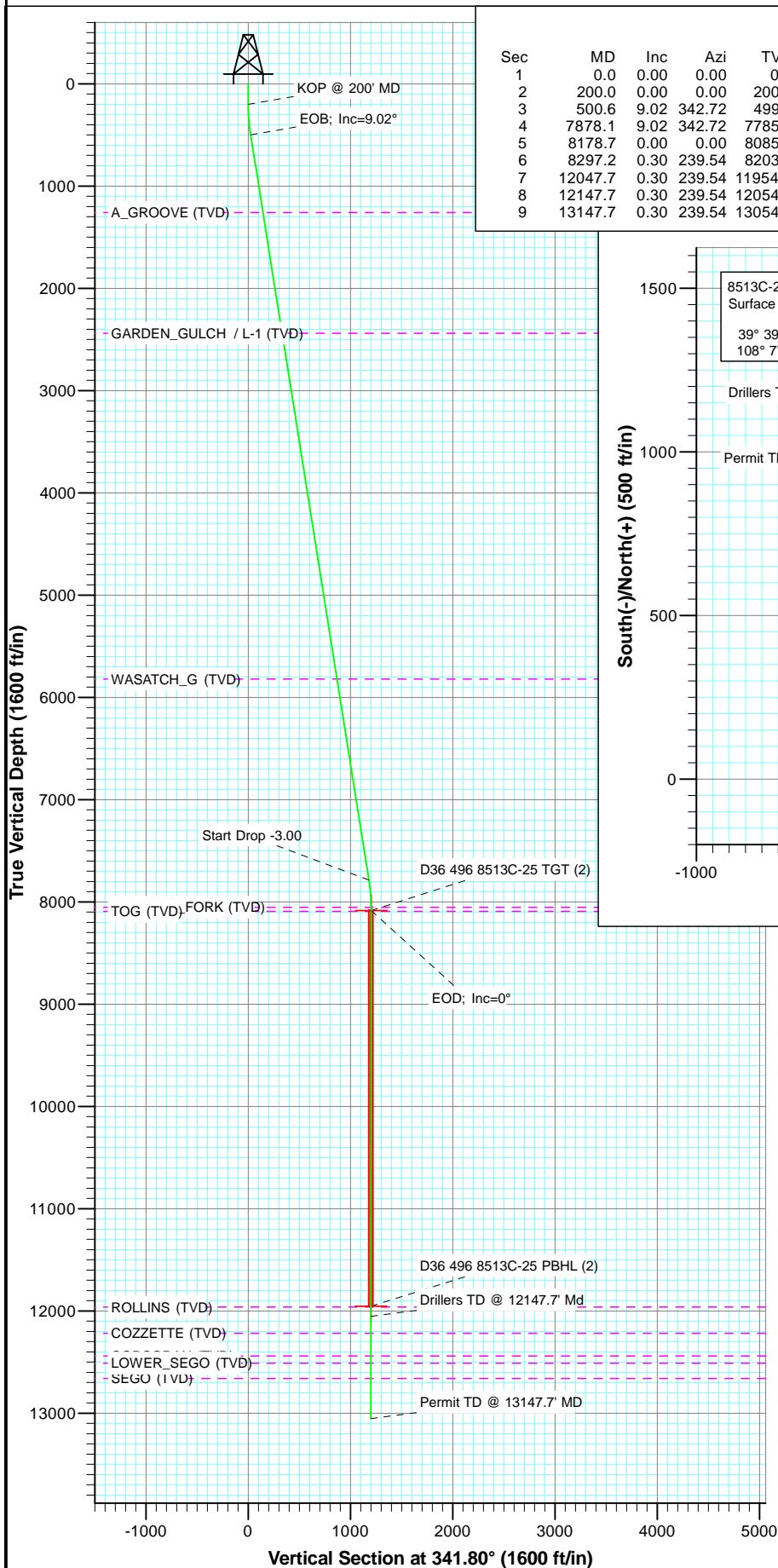
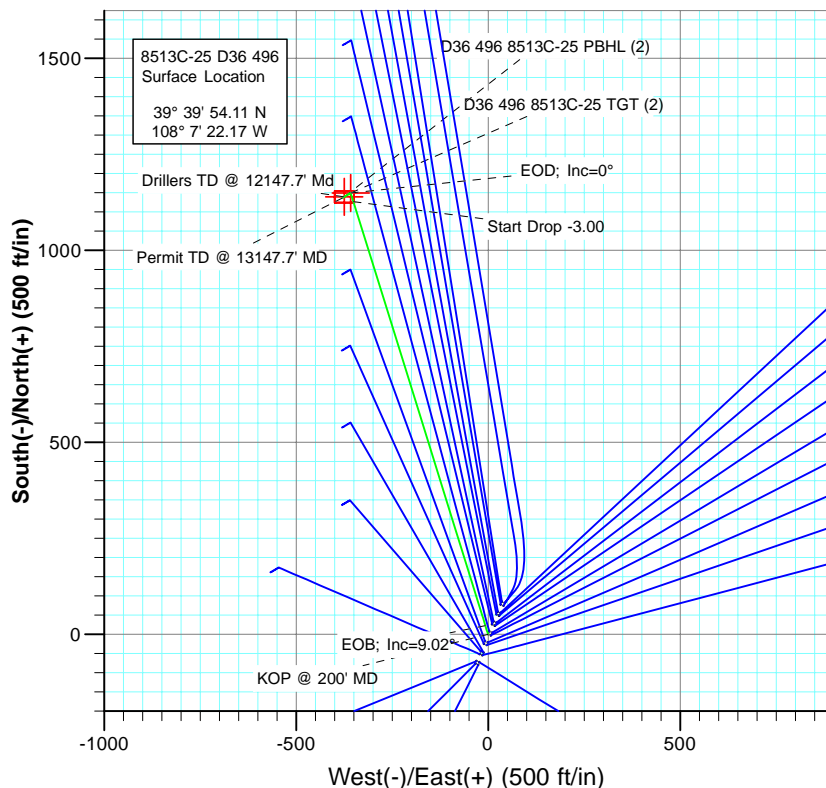




Project: Story Gulch  
Site: S36-T4S-R96W (D36 496)  
Well: 8513C-25 D36 496  
Wellbore: DD  
Plan: Plan #2



SECTION DETAILS										
Sec	MD	Inc	Azi	TVD	+N/-S	+E/-W	Dleg	TFace	VSec	Target
1	0.0	0.00	0.00	0.0	0.0	0.0	0.00	0.00	0.0	
2	200.0	0.00	0.00	200.0	0.0	0.0	0.00	0.00	0.0	
3	500.6	9.02	342.72	499.4	22.5	-7.0	3.00	342.72	23.6	
4	7878.1	9.02	342.72	7785.6	1126.8	-350.6	0.00	0.00	1179.9	
5	8178.7	0.00	0.00	8085.0	1149.3	-357.6	3.00	180.00	1203.5	D36 496 8513C-25 TGT (2)
6	8297.2	0.30	239.54	8203.5	1149.2	-357.8	0.25	239.54	1203.5	
7	12047.7	0.30	239.54	11954.0	1139.3	-374.6	0.00	0.00	1199.3	D36 496 8513C-25 PBHL (2)
8	12147.7	0.30	239.54	12054.0	1139.1	-375.0	0.00	0.00	1199.2	
9	13147.7	0.30	239.54	13054.0	1136.5	-379.5	0.00	0.00	1198.1	



FORMATION TOP DETAILS		
TVDPath	MDPath	Formation
1260.0	1270.8	A_GROOVE (TVD)
2439.0	2464.5	GARDEN_GULCH / L-1 (TVD)
5822.0	5889.9	WASATCH_G (TVD)
8054.0	8147.7	WILLIAMS_FORK (TVD)
8094.0	8187.7	TOG (TVD)
11963.0	12056.7	ROLLINS (TVD)
12218.0	12311.7	COZZETTE (TVD)
12441.0	12534.7	CORCORAN (TVD)
12511.0	12604.7	LOWER_SEGO (TVD)
12662.0	12755.7	SEGO (TVD)

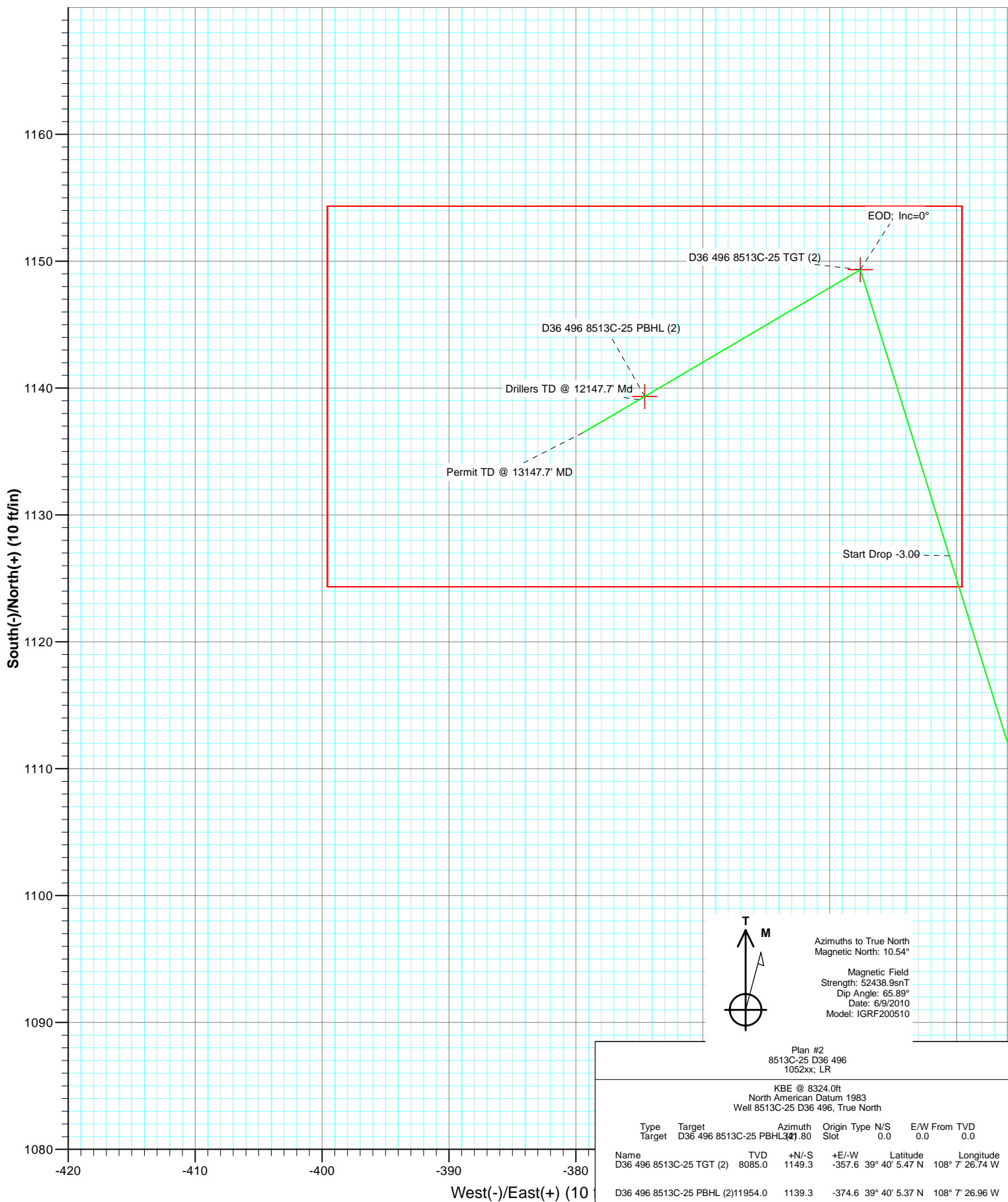


Azimuths to True North  
Magnetic North: 10.54°  
  
Magnetic Field  
Strength: 52438.9nT  
Dip Angle: 65.89°  
Date: 6/9/2010  
Model: IGRF200510

Plan #2 8513C-25 D36 496 1052xx; LR					
KBE @ 8324.0ft North American Datum 1983 Well 8513C-25 D36 496, True North					
Type	Target	Azimuth	Origin	Type	N/S
	D36 496 8513C-25 PBHL	341.80	Slot		0.0
E/W From TVD					
0.0					
Name	Target	TVD	+N/-S	+E/-W	Latitude
D36 496 8513C-25 TGT (2)		8085.0	1149.3	-357.6	39° 40' 5.47 N
D36 496 8513C-25 PBHL (2)		11954.0	1139.3	-374.6	39° 40' 5.37 N



Project: Story Gulch  
Site: S36-T4S-R96W (D36 496)  
Well: 8513C-25 D36 496  
Wellbore: DD  
Plan: Plan #2



Azimuths to True North  
Magnetic North: 10.54°  
  
Magnetic Field  
Strength: 52438.9nT  
Dip Angle: 65.89°  
Date: 6/9/2010  
Model: IGRF200510

Plan #2  
8513C-25 D36 496  
1052xx; LR

KBE @ 8324.0ft  
North American Datum 1983  
Well 8513C-25 D36 496, True North

Type	Target	Azimuth	Origin	Type	N/S	E/W	From	TVD
Target	D36 496 8513C-25 PBHL	1149.3	Slot		0.0	0.0		0.0
Name	D36 496 8513C-25 TGT (2)	8085.0	+N/-S	+E/-W	Latitude	Longitude		
			1149.3	-357.6 39° 40' 5.47 N	108° 7' 26.74 W			
	D36 496 8513C-25 PBHL (2)	11954.0	1139.3	-374.6 39° 40' 5.37 N	108° 7' 26.96 W			

# Cathedral Energy Services

## Planning Report

<b>Database:</b>	EDM 5000.1 US Multi Users DB	<b>Local Co-ordinate Reference:</b>	Well 8513C-25 D36 496
<b>Company:</b>	EnCana Oil & Gas (USA) Inc	<b>TVD Reference:</b>	KBE @ 8324.0ft
<b>Project:</b>	Story Gulch	<b>MD Reference:</b>	KBE @ 8324.0ft
<b>Site:</b>	S36-T4S-R96W (D36 496)	<b>North Reference:</b>	True
<b>Well:</b>	8513C-25 D36 496	<b>Survey Calculation Method:</b>	Minimum Curvature
<b>Wellbore:</b>	DD		
<b>Design:</b>	Plan #2		

<b>Project</b>	Story Gulch		
<b>Map System:</b>	US State Plane 1983	<b>System Datum:</b>	Mean Sea Level
<b>Geo Datum:</b>	North American Datum 1983		
<b>Map Zone:</b>	Colorado Central Zone		

Site		S36-T4S-R96W (D36 496)			
Site Position:		Northing:	1,677,676.10 ft	Latitude:	39° 39' 53.09 N
From:	Lat/Long	Easting:	2,261,675.01 ft	Longitude:	108° 7' 22.74 W
Position Uncertainty:	0.0 ft	Slot Radius:	13.200 in	Grid Convergence:	-1.65 °

Well	8513C-25 D36 496					
Well Position	+N/-S	0.0 ft	Northing:	1,677,777.65 ft	Latitude:	39° 39' 54.11 N
	+E/-W	0.0 ft	Easting:	2,261,722.21 ft	Longitude:	108° 7' 22.17 W
Position Uncertainty		0.0 ft	Wellhead Elevation:	ft	Ground Level:	8,302.0 ft

<b>Wellbore</b>	DD				
<b>Magnetics</b>	<b>Model Name</b>	<b>Sample Date</b>	<b>Declination (°)</b>	<b>Dip Angle (°)</b>	<b>Field Strength (nT)</b>
	IGRF200510	6/9/2010	10.54	65.89	52,439

<b>Design</b>	Plan #2			
<b>Audit Notes:</b>				
<b>Version:</b>	<b>Phase:</b>	PLAN	<b>Tie On Depth:</b>	0.0
<b>Vertical Section:</b>	<b>Depth From (TVD) (ft)</b>	<b>+N/-S (ft)</b>	<b>+E/-W (ft)</b>	<b>Direction (°)</b>
	0.0	0.0	0.0	341.80

<b>Plan Sections</b>										
Measured Depth (ft)	Inclination (°)	Azimuth (°)	Vertical Depth (ft)	+N/-S (ft)	+E/-W (ft)	Dogleg Rate (°/100ft)	Build Rate (°/100ft)	Turn Rate (°/100ft)	TFO (°)	Target
0.0	0.00	0.00	0.0	0.0	0.0	0.00	0.00	0.00	0.00	
200.0	0.00	0.00	200.0	0.0	0.0	0.00	0.00	0.00	0.00	
500.6	9.02	342.72	499.4	22.5	-7.0	3.00	3.00	0.00	342.72	
7,878.1	9.02	342.72	7,785.6	1,126.8	-350.6	0.00	0.00	0.00	0.00	
8,178.7	0.00	0.00	8,085.0	1,149.3	-357.6	3.00	-3.00	0.00	180.00	D36 496 8513C-25 TC
8,297.2	0.30	239.54	8,203.5	1,149.2	-357.8	0.25	0.25	-101.62	239.54	
12,047.7	0.30	239.54	11,954.0	1,139.3	-374.6	0.00	0.00	0.00	0.00	D36 496 8513C-25 PI
12,147.7	0.30	239.54	12,054.0	1,139.1	-375.0	0.00	0.00	0.00	0.00	
13,147.7	0.30	239.54	13,054.0	1,136.5	-379.5	0.00	0.00	0.00	0.00	

# Cathedral Energy Services

## Planning Report

<b>Database:</b>	EDM 5000.1 US Multi Users DB	<b>Local Co-ordinate Reference:</b>	Well 8513C-25 D36 496
<b>Company:</b>	EnCana Oil & Gas (USA) Inc	<b>TVD Reference:</b>	KBE @ 8324.0ft
<b>Project:</b>	Story Gulch	<b>MD Reference:</b>	KBE @ 8324.0ft
<b>Site:</b>	S36-T4S-R96W (D36 496)	<b>North Reference:</b>	True
<b>Well:</b>	8513C-25 D36 496	<b>Survey Calculation Method:</b>	Minimum Curvature
<b>Wellbore:</b>	DD		
<b>Design:</b>	Plan #2		

### Planned Survey

Measured Depth (ft)	Inclination (°)	Azimuth (°)	Vertical Depth (ft)	+N/-S (ft)	+E/-W (ft)	Vertical Section (ft)	Dogleg Rate (°/100ft)	Build Rate (°/100ft)	Comments / Formations
0.0	0.00	0.00	0.0	0.0	0.0	0.0	0.00	0.00	
100.0	0.00	0.00	100.0	0.0	0.0	0.0	0.00	0.00	
200.0	0.00	0.00	200.0	0.0	0.0	0.0	0.00	0.00	KOP @ 200' MD
300.0	3.00	342.72	300.0	2.5	-0.8	2.6	3.00	3.00	
400.0	6.00	342.72	399.6	10.0	-3.1	10.5	3.00	3.00	
500.0	9.00	342.72	498.8	22.5	-7.0	23.5	3.00	3.00	
500.6	9.02	342.72	499.4	22.5	-7.0	23.6	3.00	3.00	EOB; Inc=9.02°
600.0	9.02	342.72	597.5	37.4	-11.6	39.2	0.00	0.00	
700.0	9.02	342.72	696.3	52.4	-16.3	54.9	0.00	0.00	
800.0	9.02	342.72	795.1	67.4	-21.0	70.5	0.00	0.00	
900.0	9.02	342.72	893.8	82.3	-25.6	86.2	0.00	0.00	
1,000.0	9.02	342.72	992.6	97.3	-30.3	101.9	0.00	0.00	
1,100.0	9.02	342.72	1,091.4	112.3	-34.9	117.6	0.00	0.00	
1,200.0	9.02	342.72	1,190.1	127.2	-39.6	133.2	0.00	0.00	
1,270.8	9.02	342.72	1,260.0	137.8	-42.9	144.3	0.00	0.00	A_GROOVE (TVD)
1,300.0	9.02	342.72	1,288.9	142.2	-44.2	148.9	0.00	0.00	
1,400.0	9.02	342.72	1,387.6	157.2	-48.9	164.6	0.00	0.00	
1,500.0	9.02	342.72	1,486.4	172.1	-53.6	180.2	0.00	0.00	
1,600.0	9.02	342.72	1,585.2	187.1	-58.2	195.9	0.00	0.00	
1,700.0	9.02	342.72	1,683.9	202.1	-62.9	211.6	0.00	0.00	
1,800.0	9.02	342.72	1,782.7	217.0	-67.5	227.3	0.00	0.00	
1,900.0	9.02	342.72	1,881.5	232.0	-72.2	242.9	0.00	0.00	
2,000.0	9.02	342.72	1,980.2	247.0	-76.8	258.6	0.00	0.00	
2,100.0	9.02	342.72	2,079.0	261.9	-81.5	274.3	0.00	0.00	
2,200.0	9.02	342.72	2,177.8	276.9	-86.2	290.0	0.00	0.00	
2,300.0	9.02	342.72	2,276.5	291.9	-90.8	305.6	0.00	0.00	
2,400.0	9.02	342.72	2,375.3	306.8	-95.5	321.3	0.00	0.00	
2,464.5	9.02	342.72	2,439.0	316.5	-98.5	331.4	0.00	0.00	GARDEN_GULCH / L-1 (TVD)
2,500.0	9.02	342.72	2,474.0	321.8	-100.1	337.0	0.00	0.00	
2,600.0	9.02	342.72	2,572.8	336.8	-104.8	352.7	0.00	0.00	
2,700.0	9.02	342.72	2,671.6	351.7	-109.4	368.3	0.00	0.00	
2,800.0	9.02	342.72	2,770.3	366.7	-114.1	384.0	0.00	0.00	
2,900.0	9.02	342.72	2,869.1	381.7	-118.7	399.7	0.00	0.00	
3,000.0	9.02	342.72	2,967.9	396.6	-123.4	415.3	0.00	0.00	
3,100.0	9.02	342.72	3,066.6	411.6	-128.1	431.0	0.00	0.00	
3,200.0	9.02	342.72	3,165.4	426.6	-132.7	446.7	0.00	0.00	
3,300.0	9.02	342.72	3,264.2	441.6	-137.4	462.4	0.00	0.00	
3,400.0	9.02	342.72	3,362.9	456.5	-142.0	478.0	0.00	0.00	
3,500.0	9.02	342.72	3,461.7	471.5	-146.7	493.7	0.00	0.00	
3,600.0	9.02	342.72	3,560.4	486.5	-151.3	509.4	0.00	0.00	
3,700.0	9.02	342.72	3,659.2	501.4	-156.0	525.1	0.00	0.00	
3,800.0	9.02	342.72	3,758.0	516.4	-160.7	540.7	0.00	0.00	
3,900.0	9.02	342.72	3,856.7	531.4	-165.3	556.4	0.00	0.00	
4,000.0	9.02	342.72	3,955.5	546.3	-170.0	572.1	0.00	0.00	
4,100.0	9.02	342.72	4,054.3	561.3	-174.6	587.8	0.00	0.00	
4,200.0	9.02	342.72	4,153.0	576.3	-179.3	603.4	0.00	0.00	
4,300.0	9.02	342.72	4,251.8	591.2	-183.9	619.1	0.00	0.00	
4,400.0	9.02	342.72	4,350.6	606.2	-188.6	634.8	0.00	0.00	
4,500.0	9.02	342.72	4,449.3	621.2	-193.3	650.5	0.00	0.00	
4,600.0	9.02	342.72	4,548.1	636.1	-197.9	666.1	0.00	0.00	
4,700.0	9.02	342.72	4,646.8	651.1	-202.6	681.8	0.00	0.00	
4,800.0	9.02	342.72	4,745.6	666.1	-207.2	697.5	0.00	0.00	

# Cathedral Energy Services

## Planning Report

<b>Database:</b>	EDM 5000.1 US Multi Users DB	<b>Local Co-ordinate Reference:</b>	Well 8513C-25 D36 496
<b>Company:</b>	EnCana Oil & Gas (USA) Inc	<b>TVD Reference:</b>	KBE @ 8324.0ft
<b>Project:</b>	Story Gulch	<b>MD Reference:</b>	KBE @ 8324.0ft
<b>Site:</b>	S36-T4S-R96W (D36 496)	<b>North Reference:</b>	True
<b>Well:</b>	8513C-25 D36 496	<b>Survey Calculation Method:</b>	Minimum Curvature
<b>Wellbore:</b>	DD		
<b>Design:</b>	Plan #2		

Planned Survey									
Measured Depth (ft)	Inclination (°)	Azimuth (°)	Vertical Depth (ft)	+N/-S (ft)	+E/-W (ft)	Vertical Section (ft)	Dogleg Rate (°/100ft)	Build Rate (°/100ft)	Comments / Formations
4,900.0	9.02	342.72	4,844.4	681.0	-211.9	713.1	0.00	0.00	
5,000.0	9.02	342.72	4,943.1	696.0	-216.5	728.8	0.00	0.00	
5,100.0	9.02	342.72	5,041.9	711.0	-221.2	744.5	0.00	0.00	
5,200.0	9.02	342.72	5,140.7	725.9	-225.9	760.2	0.00	0.00	
5,300.0	9.02	342.72	5,239.4	740.9	-230.5	775.8	0.00	0.00	
5,400.0	9.02	342.72	5,338.2	755.9	-235.2	791.5	0.00	0.00	
5,500.0	9.02	342.72	5,437.0	770.8	-239.8	807.2	0.00	0.00	
5,600.0	9.02	342.72	5,535.7	785.8	-244.5	822.9	0.00	0.00	
5,700.0	9.02	342.72	5,634.5	800.8	-249.1	838.5	0.00	0.00	
5,800.0	9.02	342.72	5,733.2	815.7	-253.8	854.2	0.00	0.00	
5,889.9	9.02	342.72	5,822.0	829.2	-258.0	868.3	0.00	0.00	WASATCH_G (TVD)
5,900.0	9.02	342.72	5,832.0	830.7	-258.5	869.9	0.00	0.00	
6,000.0	9.02	342.72	5,930.8	845.7	-263.1	885.6	0.00	0.00	
6,100.0	9.02	342.72	6,029.5	860.7	-267.8	901.2	0.00	0.00	
6,200.0	9.02	342.72	6,128.3	875.6	-272.4	916.9	0.00	0.00	
6,300.0	9.02	342.72	6,227.1	890.6	-277.1	932.6	0.00	0.00	
6,400.0	9.02	342.72	6,325.8	905.6	-281.7	948.2	0.00	0.00	
6,500.0	9.02	342.72	6,424.6	920.5	-286.4	963.9	0.00	0.00	
6,600.0	9.02	342.72	6,523.4	935.5	-291.0	979.6	0.00	0.00	
6,700.0	9.02	342.72	6,622.1	950.5	-295.7	995.3	0.00	0.00	
6,800.0	9.02	342.72	6,720.9	965.4	-300.4	1,010.9	0.00	0.00	
6,900.0	9.02	342.72	6,819.6	980.4	-305.0	1,026.6	0.00	0.00	
7,000.0	9.02	342.72	6,918.4	995.4	-309.7	1,042.3	0.00	0.00	
7,100.0	9.02	342.72	7,017.2	1,010.3	-314.3	1,058.0	0.00	0.00	
7,200.0	9.02	342.72	7,115.9	1,025.3	-319.0	1,073.6	0.00	0.00	
7,300.0	9.02	342.72	7,214.7	1,040.3	-323.6	1,089.3	0.00	0.00	
7,400.0	9.02	342.72	7,313.5	1,055.2	-328.3	1,105.0	0.00	0.00	
7,500.0	9.02	342.72	7,412.2	1,070.2	-333.0	1,120.7	0.00	0.00	
7,600.0	9.02	342.72	7,511.0	1,085.2	-337.6	1,136.3	0.00	0.00	
7,700.0	9.02	342.72	7,609.8	1,100.1	-342.3	1,152.0	0.00	0.00	
7,800.0	9.02	342.72	7,708.5	1,115.1	-346.9	1,167.7	0.00	0.00	
7,878.1	9.02	342.72	7,785.6	1,126.8	-350.6	1,179.9	0.00	0.00	Start Drop -3.00
7,900.0	8.36	342.72	7,807.3	1,130.0	-351.6	1,183.2	3.00	-3.00	
8,000.0	5.36	342.72	7,906.6	1,141.4	-355.1	1,195.2	3.00	-3.00	
8,100.0	2.36	342.72	8,006.3	1,147.8	-357.1	1,201.9	3.00	-3.00	
8,147.7	0.93	342.72	8,054.0	1,149.1	-357.5	1,203.3	3.00	-3.00	WILLIAMS_FORK (TVD)
8,178.7	0.00	0.00	8,085.0	1,149.3	-357.6	1,203.5	3.00	-3.00	EOD; Inc=0° - D36 496 8513C-25 TGT (2)
8,187.7	0.02	239.54	8,094.0	1,149.3	-357.6	1,203.5	0.25	0.25	TOG (TVD)
8,200.0	0.05	239.54	8,106.3	1,149.3	-357.6	1,203.5	0.25	0.25	
8,297.2	0.30	239.54	8,203.5	1,149.2	-357.8	1,203.5	0.25	0.25	
8,300.0	0.30	239.54	8,206.3	1,149.2	-357.9	1,203.5	0.00	0.00	
8,358.2	0.30	239.54	8,264.5	1,149.0	-358.1	1,203.4	0.00	0.00	D36 496 8513C-25 TGT
8,400.0	0.30	239.54	8,306.3	1,148.9	-358.3	1,203.3	0.00	0.00	
8,500.0	0.30	239.54	8,406.3	1,148.6	-358.7	1,203.2	0.00	0.00	
8,600.0	0.30	239.54	8,506.3	1,148.4	-359.2	1,203.1	0.00	0.00	
8,700.0	0.30	239.54	8,606.3	1,148.1	-359.6	1,203.0	0.00	0.00	
8,800.0	0.30	239.54	8,706.3	1,147.9	-360.1	1,202.9	0.00	0.00	
8,900.0	0.30	239.54	8,806.3	1,147.6	-360.5	1,202.8	0.00	0.00	
9,000.0	0.30	239.54	8,906.3	1,147.3	-361.0	1,202.7	0.00	0.00	
9,100.0	0.30	239.54	9,006.3	1,147.1	-361.4	1,202.6	0.00	0.00	
9,200.0	0.30	239.54	9,106.3	1,146.8	-361.9	1,202.5	0.00	0.00	
9,300.0	0.30	239.54	9,206.3	1,146.5	-362.3	1,202.4	0.00	0.00	

# Cathedral Energy Services

## Planning Report

<b>Database:</b>	EDM 5000.1 US Multi Users DB	<b>Local Co-ordinate Reference:</b>	Well 8513C-25 D36 496
<b>Company:</b>	EnCana Oil & Gas (USA) Inc	<b>TVD Reference:</b>	KBE @ 8324.0ft
<b>Project:</b>	Story Gulch	<b>MD Reference:</b>	KBE @ 8324.0ft
<b>Site:</b>	S36-T4S-R96W (D36 496)	<b>North Reference:</b>	True
<b>Well:</b>	8513C-25 D36 496	<b>Survey Calculation Method:</b>	Minimum Curvature
<b>Wellbore:</b>	DD		
<b>Design:</b>	Plan #2		

Planned Survey									
Measured Depth (ft)	Inclination (°)	Azimuth (°)	Vertical Depth (ft)	+N/-S (ft)	+E/-W (ft)	Vertical Section (ft)	Dogleg Rate (°/100ft)	Build Rate (°/100ft)	Comments / Formations
9,400.0	0.30	239.54	9,306.3	1,146.3	-362.8	1,202.2	0.00	0.00	
9,500.0	0.30	239.54	9,406.3	1,146.0	-363.2	1,202.1	0.00	0.00	
9,600.0	0.30	239.54	9,506.3	1,145.8	-363.7	1,202.0	0.00	0.00	
9,700.0	0.30	239.54	9,606.3	1,145.5	-364.1	1,201.9	0.00	0.00	
9,800.0	0.30	239.54	9,706.3	1,145.2	-364.5	1,201.8	0.00	0.00	
9,900.0	0.30	239.54	9,806.3	1,145.0	-365.0	1,201.7	0.00	0.00	
10,000.0	0.30	239.54	9,906.3	1,144.7	-365.4	1,201.6	0.00	0.00	
10,100.0	0.30	239.54	10,006.3	1,144.5	-365.9	1,201.5	0.00	0.00	
10,200.0	0.30	239.54	10,106.3	1,144.2	-366.3	1,201.4	0.00	0.00	
10,300.0	0.30	239.54	10,206.3	1,143.9	-366.8	1,201.3	0.00	0.00	
10,400.0	0.30	239.54	10,306.3	1,143.7	-367.2	1,201.1	0.00	0.00	
10,500.0	0.30	239.54	10,406.3	1,143.4	-367.7	1,201.0	0.00	0.00	
10,600.0	0.30	239.54	10,506.3	1,143.1	-368.1	1,200.9	0.00	0.00	
10,700.0	0.30	239.54	10,606.3	1,142.9	-368.6	1,200.8	0.00	0.00	
10,800.0	0.30	239.54	10,706.3	1,142.6	-369.0	1,200.7	0.00	0.00	
10,900.0	0.30	239.54	10,806.3	1,142.4	-369.4	1,200.6	0.00	0.00	
11,000.0	0.30	239.54	10,906.3	1,142.1	-369.9	1,200.5	0.00	0.00	
11,100.0	0.30	239.54	11,006.3	1,141.8	-370.3	1,200.4	0.00	0.00	
11,200.0	0.30	239.54	11,106.3	1,141.6	-370.8	1,200.3	0.00	0.00	
11,300.0	0.30	239.54	11,206.3	1,141.3	-371.2	1,200.2	0.00	0.00	
11,400.0	0.30	239.54	11,306.3	1,141.0	-371.7	1,200.0	0.00	0.00	
11,500.0	0.30	239.54	11,406.3	1,140.8	-372.1	1,199.9	0.00	0.00	
11,600.0	0.30	239.54	11,506.3	1,140.5	-372.6	1,199.8	0.00	0.00	
11,700.0	0.30	239.54	11,606.3	1,140.3	-373.0	1,199.7	0.00	0.00	
11,800.0	0.30	239.54	11,706.3	1,140.0	-373.5	1,199.6	0.00	0.00	
11,900.0	0.30	239.54	11,806.3	1,139.7	-373.9	1,199.5	0.00	0.00	
12,000.0	0.30	239.54	11,906.3	1,139.5	-374.4	1,199.4	0.00	0.00	
12,018.2	0.30	239.54	11,924.4	1,139.4	-374.4	1,199.4	0.00	0.00	D36 496 8513C-25 PBHL
12,047.7	0.30	239.54	11,954.0	1,139.3	-374.6	1,199.3	0.00	0.00	D36 496 8513C-25 PBHL (2)
12,056.7	0.30	239.54	11,963.0	1,139.3	-374.6	1,199.3	0.00	0.00	ROLLINS (TVD)
12,100.0	0.30	239.54	12,006.3	1,139.2	-374.8	1,199.3	0.00	0.00	
12,147.7	0.30	239.54	12,054.0	1,139.1	-375.0	1,199.2	0.00	0.00	Drillers TD @ 12147.7' Md
12,200.0	0.30	239.54	12,106.3	1,138.9	-375.2	1,199.2	0.00	0.00	
12,300.0	0.30	239.54	12,206.3	1,138.7	-375.7	1,199.1	0.00	0.00	
12,311.7	0.30	239.54	12,218.0	1,138.7	-375.7	1,199.0	0.00	0.00	COZZETTE (TVD)
12,400.0	0.30	239.54	12,306.3	1,138.4	-376.1	1,198.9	0.00	0.00	
12,500.0	0.30	239.54	12,406.3	1,138.2	-376.6	1,198.8	0.00	0.00	
12,534.7	0.30	239.54	12,441.0	1,138.1	-376.7	1,198.8	0.00	0.00	CORCORAN (TVD)
12,600.0	0.30	239.54	12,506.3	1,137.9	-377.0	1,198.7	0.00	0.00	
12,604.7	0.30	239.54	12,511.0	1,137.9	-377.0	1,198.7	0.00	0.00	LOWER_SEGO (TVD)
12,700.0	0.30	239.54	12,606.3	1,137.6	-377.5	1,198.6	0.00	0.00	
12,755.7	0.30	239.54	12,662.0	1,137.5	-377.7	1,198.6	0.00	0.00	SEGO (TVD)
12,800.0	0.30	239.54	12,706.3	1,137.4	-377.9	1,198.5	0.00	0.00	
12,900.0	0.30	239.54	12,806.3	1,137.1	-378.4	1,198.4	0.00	0.00	
13,000.0	0.30	239.54	12,906.3	1,136.8	-378.8	1,198.3	0.00	0.00	
13,100.0	0.30	239.54	13,006.3	1,136.6	-379.3	1,198.2	0.00	0.00	
13,147.7	0.30	239.54	13,054.0	1,136.5	-379.5	1,198.1	0.00	0.00	Permit TD @ 13147.7' MD

# Cathedral Energy Services

## Planning Report

<b>Database:</b>	EDM 5000.1 US Multi Users DB	<b>Local Co-ordinate Reference:</b>	Well 8513C-25 D36 496
<b>Company:</b>	EnCana Oil & Gas (USA) Inc	<b>TVD Reference:</b>	KBE @ 8324.0ft
<b>Project:</b>	Story Gulch	<b>MD Reference:</b>	KBE @ 8324.0ft
<b>Site:</b>	S36-T4S-R96W (D36 496)	<b>North Reference:</b>	True
<b>Well:</b>	8513C-25 D36 496	<b>Survey Calculation Method:</b>	Minimum Curvature
<b>Wellbore:</b>	DD		
<b>Design:</b>	Plan #2		

Targets									
Target Name									
- hit/miss target	Dip Angle	Dip Dir.	TVD	+N/-S	+E/-W	Northing	Easting	Latitude	Longitude
- Shape	(°)	(°)	(ft)	(ft)	(ft)	(ft)	(ft)		
D36 496 8513C-25 PBH	0.00	0.00	11,954.0	1,139.3	-374.6	1,678,927.34	2,261,380.69	39° 40' 5.37 N	108° 7' 26.96 W
- plan hits target center									
- Rectangle (sides W30.0 H50.0 D0.0)									
D36 496 8513C-25 PBH	0.00	0.00	11,924.0	915.7	-340.2	1,678,702.82	2,261,408.63	39° 40' 3.16 N	108° 7' 26.52 W
- plan misses target center by 226.3ft at 12018.2ft MD (11924.4 TVD, 1139.4 N, -374.4 E)									
- Rectangle (sides W30.0 H50.0 D0.0)									
D36 496 8513C-25 TGT	0.00	0.00	8,264.0	915.7	-340.2	1,678,702.82	2,261,408.63	39° 40' 3.16 N	108° 7' 26.52 W
- plan misses target center by 234.0ft at 8358.2ft MD (8264.5 TVD, 1149.0 N, -358.1 E)									
- Point									
D36 496 8513C-25 TGT	0.00	0.00	8,085.0	1,149.3	-357.6	1,678,936.83	2,261,397.96	39° 40' 5.47 N	108° 7' 26.74 W
- plan hits target center									
- Point									

Formations						
Measured Depth	Vertical Depth	Name	Lithology	Dip	Dip Direction	
(ft)	(ft)			(°)	(°)	
1,270.8	1,260.0	A_GROOVE (TVD)				
2,464.5	2,439.0	GARDEN_GULCH / L-1 (TVD)				
5,889.9	5,822.0	WASATCH_G (TVD)				
8,147.7	8,054.0	WILLIAMS_FORK (TVD)				
8,187.7	8,094.0	TOG (TVD)				
12,056.7	11,963.0	ROLLINS (TVD)				
12,311.7	12,218.0	COZZETTE (TVD)				
12,534.7	12,441.0	CORCORAN (TVD)				
12,604.7	12,511.0	LOWER_SEGO (TVD)				
12,755.7	12,662.0	SEGO (TVD)				

Plan Annotations					
Measured Depth	Vertical Depth	Local Coordinates			
(ft)	(ft)	+N/-S (ft)	+E/-W (ft)	Comment	
200.0	200.0	0.0	0.0	KOP @ 200' MD	
500.6	499.4	22.5	-7.0	EOB; Inc=9.02°	
7,878.1	7,785.6	1,126.8	-350.6	Start Drop -3.00	
8,178.7	8,085.0	1,149.3	-357.6	EOD; Inc=0°	
12,147.7	12,054.0	1,149.2	-357.8	Drillers TD @ 12147.7' Md	
13,147.7	13,054.0	1,139.3	-374.6	Permit TD @ 13147.7' MD	