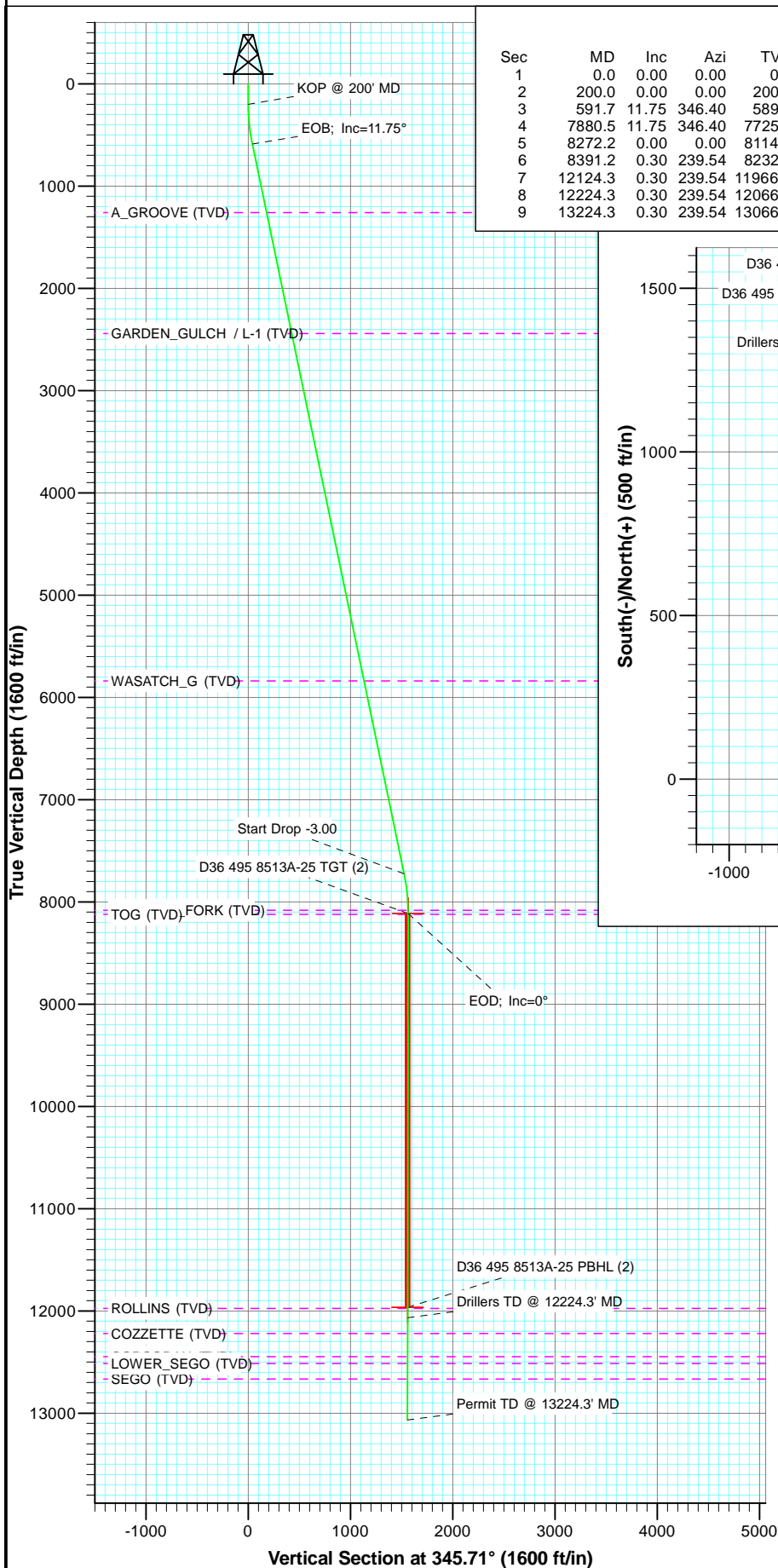


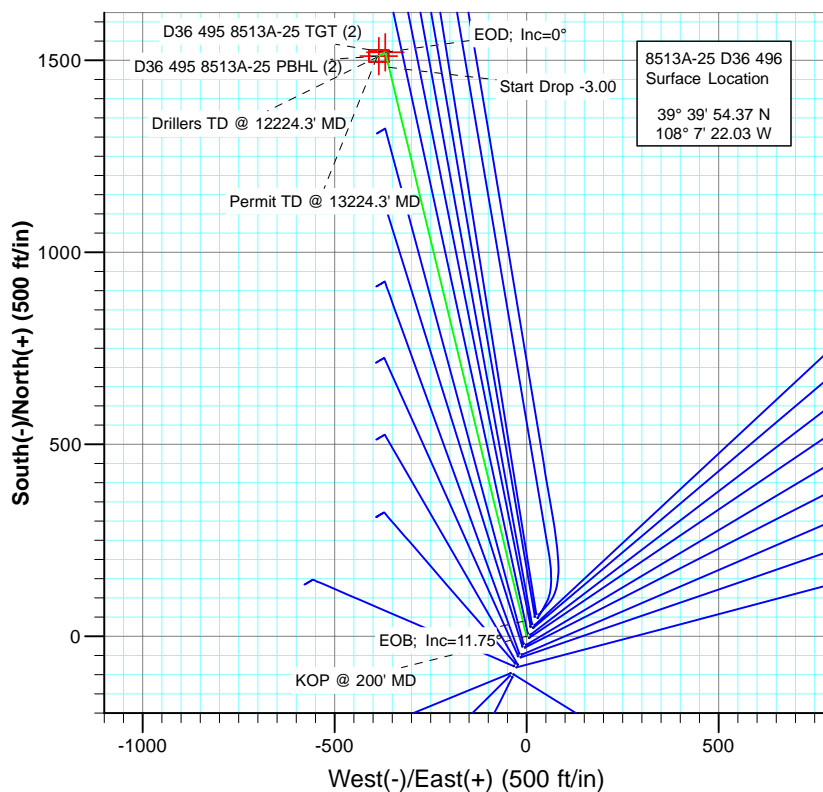


Project: Story Gulch
Site: S36-T4S-R96W (D36 496)
Well: 8513A-25 D36 496
Wellbore: DD
Plan: Plan #2



SECTION DETAILS

Sec	MD	Inc	Azi	TVD	+N/-S	+E/-W	Dleg	TFace	VSect	Target
1	0.0	0.00	0.00	0.0	0.0	0.0	0.00	0.00	0.0	
2	200.0	0.00	0.00	200.0	0.0	0.0	0.00	0.00	0.0	
3	591.7	11.75	346.40	589.0	38.9	-9.4	3.00	346.40	40.0	
4	7880.5	11.75	346.40	7725.0	1481.8	-358.3	0.00	0.00	1524.4	
5	8272.2	0.00	0.00	8114.0	1520.7	-367.8	3.00	180.00	1564.4	D36 495 8513A-25 TGT (2)
6	8391.2	0.30	239.54	8232.9	1520.5	-368.0	0.25	239.54	1564.3	
7	12124.3	0.30	239.54	11966.0	1510.7	-384.7	0.00	0.00	1558.9	D36 495 8513A-25 PBHL (2)
8	12224.3	0.30	239.54	12066.0	1510.4	-385.2	0.00	0.00	1558.8	
9	13224.3	0.30	239.54	13066.0	1507.8	-389.6	0.00	0.00	1557.3	



FORMATION TOP DETAILS

TVDPath	MDPath	Formation
1260.0	1277.1	A_GROOVE (TVD)
2442.0	2484.4	GARDEN_GULCH / L-1 (TVD)
5839.0	5954.1	WASATCH_G (TVD)
8083.0	8241.2	WILLIAMS_FORK (TVD)
8123.0	8281.2	TOG (TVD)
11975.0	12133.3	ROLLINS (TVD)
12222.0	12380.3	COZZETTE (TVD)
12447.0	12605.3	CORCORAN (TVD)
12515.0	12673.3	LOWER_SEGO (TVD)
12667.0	12825.3	SEGO (TVD)



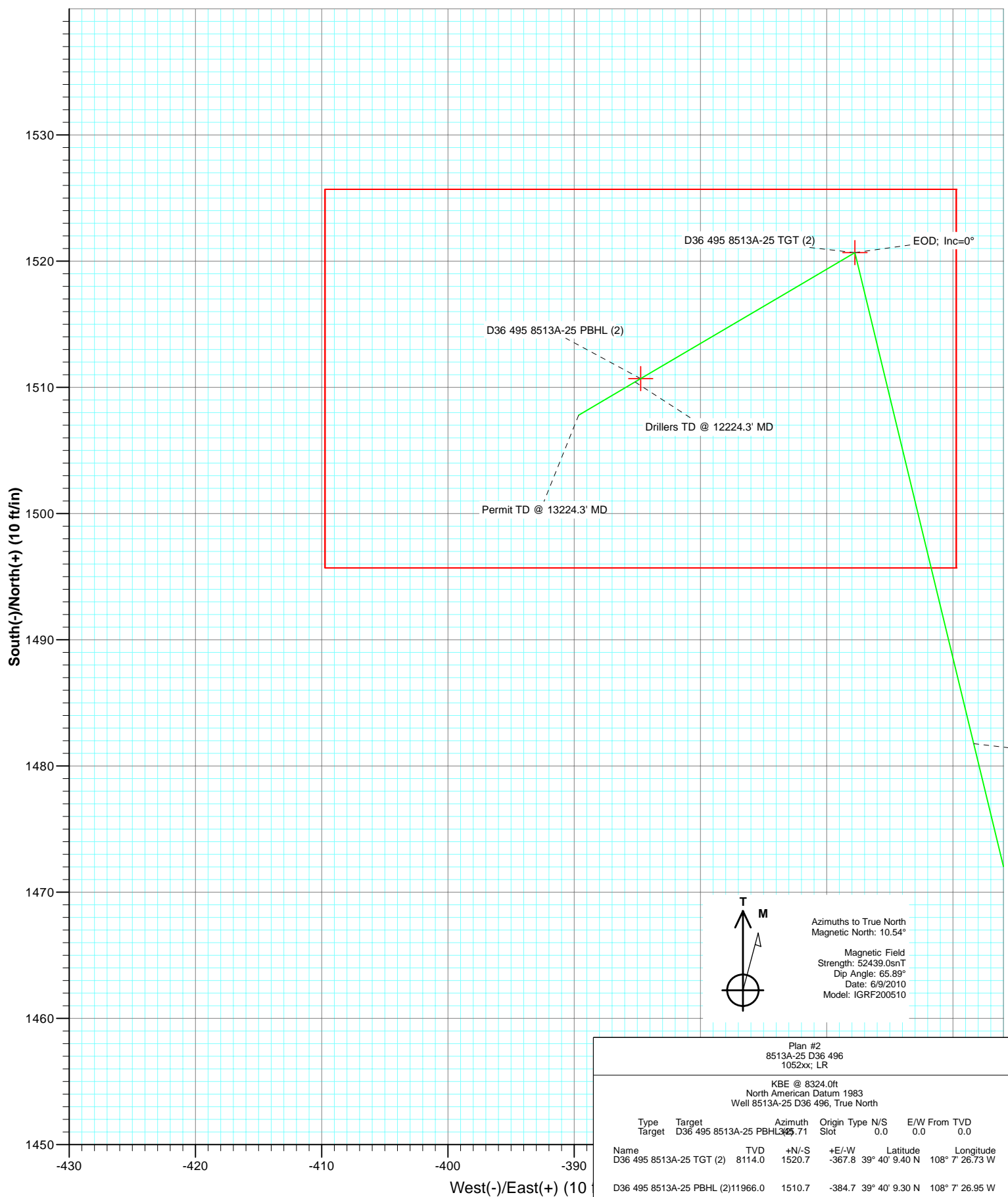
Azimuths to True North
Magnetic North: 10.54°

Magnetic Field
Strength: 52439.0nT
Dip Angle: 65.89°
Date: 6/9/2010
Model: IGRF200510

Plan #2
8513A-25 D36 496
1052xx; LR

KBE @ 8324.0ft
North American Datum 1983
Well 8513A-25 D36 496, True North

Type	Target	Target	Azimuth	Origin	Type	N/S	E/W	From	TVD
		D36 495 8513A-25 PBHL (2)	345.71	Slot		0.0	0.0	0.0	0.0
Name	Target	TVD	+N/-S	+E/-W	Latitude	Longitude			
D36 495 8513A-25 TGT (2)	8114.0	1520.7		-367.8 39° 40' 9.40 N	108° 7' 26.73 W				
D36 495 8513A-25 PBHL (2)	11966.0	1510.7		-384.7 39° 40' 9.30 N	108° 7' 26.95 W				



Cathedral Energy Services

Planning Report

Database:	EDM 5000.1 US Multi Users DB	Local Co-ordinate Reference:	Well 8513A-25 D36 496
Company:	EnCana Oil & Gas (USA) Inc	TVD Reference:	KBE @ 8324.0ft
Project:	Story Gulch	MD Reference:	KBE @ 8324.0ft
Site:	S36-T4S-R96W (D36 496)	North Reference:	True
Well:	8513A-25 D36 496	Survey Calculation Method:	Minimum Curvature
Wellbore:	DD		
Design:	Plan #2		

Project	Story Gulch		
Map System:	US State Plane 1983	System Datum:	Mean Sea Level
Geo Datum:	North American Datum 1983		
Map Zone:	Colorado Central Zone		

Site		S36-T4S-R96W (D36 496)			
Site Position:		Northing:	1,677,676.10 ft	Latitude:	39° 39' 53.09 N
From:	Lat/Long	Easting:	2,261,675.01 ft	Longitude:	108° 7' 22.74 W
Position Uncertainty:	0.0 ft	Slot Radius:	13.200 in	Grid Convergence:	-1.65 °

Well	8513A-25 D36 496					
Well Position	+N/-S	0.0 ft	Northing:	1,677,803.63 ft	Latitude:	39° 39' 54.37 N
	+E/-W	0.0 ft	Easting:	2,261,733.92 ft	Longitude:	108° 7' 22.03 W
Position Uncertainty		0.0 ft	Wellhead Elevation:	ft	Ground Level:	8,302.0 ft

Wellbore	DD				
Magnetics	Model Name	Sample Date	Declination (°)	Dip Angle (°)	Field Strength (nT)
	IGRF200510	6/9/2010	10.54	65.89	52,439

Design	Plan #2				
Audit Notes:					
Version:	Phase:	PLAN		Tie On Depth:	0.0
Vertical Section:	Depth From (TVD) (ft)	+N/-S (ft)	+E/-W (ft)	Direction (°)	
	0.0	0.0	0.0	345.71	

Plan Sections										
Measured Depth (ft)	Inclination (°)	Azimuth (°)	Vertical Depth (ft)	+N/-S (ft)	+E/-W (ft)	Dogleg Rate (°/100ft)	Build Rate (°/100ft)	Turn Rate (°/100ft)	TFO (°)	Target
0.0	0.00	0.00	0.0	0.0	0.0	0.00	0.00	0.00	0.00	
200.0	0.00	0.00	200.0	0.0	0.0	0.00	0.00	0.00	0.00	
591.7	11.75	346.40	589.0	38.9	-9.4	3.00	3.00	0.00	346.40	
7,880.5	11.75	346.40	7,725.0	1,481.8	-358.3	0.00	0.00	0.00	0.00	
8,272.2	0.00	0.00	8,114.0	1,520.7	-367.8	3.00	-3.00	0.00	180.00	D36 495 8513A-25 TC
8,391.2	0.30	239.54	8,232.9	1,520.5	-368.0	0.25	0.25	-101.27	239.54	
12,124.3	0.30	239.54	11,966.0	1,510.7	-384.7	0.00	0.00	0.00	0.00	D36 495 8513A-25 PE
12,224.3	0.30	239.54	12,066.0	1,510.4	-385.2	0.00	0.00	0.00	0.00	
13,224.3	0.30	239.54	13,066.0	1,507.8	-389.6	0.00	0.00	0.00	0.00	

Cathedral Energy Services

Planning Report

Database:	EDM 5000.1 US Multi Users DB	Local Co-ordinate Reference:	Well 8513A-25 D36 496
Company:	EnCana Oil & Gas (USA) Inc	TVD Reference:	KBE @ 8324.0ft
Project:	Story Gulch	MD Reference:	KBE @ 8324.0ft
Site:	S36-T4S-R96W (D36 496)	North Reference:	True
Well:	8513A-25 D36 496	Survey Calculation Method:	Minimum Curvature
Wellbore:	DD		
Design:	Plan #2		

Planned Survey

Measured Depth (ft)	Inclination (°)	Azimuth (°)	Vertical Depth (ft)	+N/-S (ft)	+E/-W (ft)	Vertical Section (ft)	Dogleg Rate (°/100ft)	Build Rate (°/100ft)	Comments / Formations
0.0	0.00	0.00	0.0	0.0	0.0	0.0	0.00	0.00	
100.0	0.00	0.00	100.0	0.0	0.0	0.0	0.00	0.00	
200.0	0.00	0.00	200.0	0.0	0.0	0.0	0.00	0.00	KOP @ 200' MD
300.0	3.00	346.40	300.0	2.5	-0.6	2.6	3.00	3.00	
400.0	6.00	346.40	399.6	10.2	-2.5	10.5	3.00	3.00	
500.0	9.00	346.40	498.8	22.9	-5.5	23.5	3.00	3.00	
591.7	11.75	346.40	589.0	38.9	-9.4	40.0	3.00	3.00	EOB; Inc=11.75°
600.0	11.75	346.40	597.1	40.5	-9.8	41.7	0.00	0.00	
700.0	11.75	346.40	695.0	60.3	-14.6	62.1	0.00	0.00	
800.0	11.75	346.40	792.9	80.1	-19.4	82.4	0.00	0.00	
900.0	11.75	346.40	890.8	99.9	-24.2	102.8	0.00	0.00	
1,000.0	11.75	346.40	988.7	119.7	-29.0	123.2	0.00	0.00	
1,100.0	11.75	346.40	1,086.6	139.5	-33.7	143.5	0.00	0.00	
1,200.0	11.75	346.40	1,184.5	159.3	-38.5	163.9	0.00	0.00	
1,277.1	11.75	346.40	1,260.0	174.6	-42.2	179.6	0.00	0.00	A_GROOVE (TVD)
1,300.0	11.75	346.40	1,282.4	179.1	-43.3	184.3	0.00	0.00	
1,400.0	11.75	346.40	1,380.3	198.9	-48.1	204.6	0.00	0.00	
1,500.0	11.75	346.40	1,478.2	218.7	-52.9	225.0	0.00	0.00	
1,600.0	11.75	346.40	1,576.1	238.5	-57.7	245.4	0.00	0.00	
1,700.0	11.75	346.40	1,674.0	258.3	-62.5	265.7	0.00	0.00	
1,800.0	11.75	346.40	1,771.9	278.1	-67.3	286.1	0.00	0.00	
1,900.0	11.75	346.40	1,869.8	297.9	-72.0	306.5	0.00	0.00	
2,000.0	11.75	346.40	1,967.7	317.7	-76.8	326.8	0.00	0.00	
2,100.0	11.75	346.40	2,065.6	337.5	-81.6	347.2	0.00	0.00	
2,200.0	11.75	346.40	2,163.6	357.3	-86.4	367.5	0.00	0.00	
2,300.0	11.75	346.40	2,261.5	377.1	-91.2	387.9	0.00	0.00	
2,400.0	11.75	346.40	2,359.4	396.9	-96.0	408.3	0.00	0.00	
2,484.4	11.75	346.40	2,442.0	413.6	-100.0	425.5	0.00	0.00	GARDEN_GULCH / L-1 (TVD)
2,500.0	11.75	346.40	2,457.3	416.7	-100.8	428.6	0.00	0.00	
2,600.0	11.75	346.40	2,555.2	436.5	-105.6	449.0	0.00	0.00	
2,700.0	11.75	346.40	2,653.1	456.3	-110.3	469.4	0.00	0.00	
2,800.0	11.75	346.40	2,751.0	476.0	-115.1	489.7	0.00	0.00	
2,900.0	11.75	346.40	2,848.9	495.8	-119.9	510.1	0.00	0.00	
3,000.0	11.75	346.40	2,946.8	515.6	-124.7	530.5	0.00	0.00	
3,100.0	11.75	346.40	3,044.7	535.4	-129.5	550.8	0.00	0.00	
3,200.0	11.75	346.40	3,142.6	555.2	-134.3	571.2	0.00	0.00	
3,300.0	11.75	346.40	3,240.5	575.0	-139.1	591.6	0.00	0.00	
3,400.0	11.75	346.40	3,338.4	594.8	-143.9	611.9	0.00	0.00	
3,500.0	11.75	346.40	3,436.3	614.6	-148.6	632.3	0.00	0.00	
3,600.0	11.75	346.40	3,534.2	634.4	-153.4	652.7	0.00	0.00	
3,700.0	11.75	346.40	3,632.1	654.2	-158.2	673.0	0.00	0.00	
3,800.0	11.75	346.40	3,730.0	674.0	-163.0	693.4	0.00	0.00	
3,900.0	11.75	346.40	3,827.9	693.8	-167.8	713.7	0.00	0.00	
4,000.0	11.75	346.40	3,925.8	713.6	-172.6	734.1	0.00	0.00	
4,100.0	11.75	346.40	4,023.7	733.4	-177.4	754.5	0.00	0.00	
4,200.0	11.75	346.40	4,121.6	753.2	-182.1	774.8	0.00	0.00	
4,300.0	11.75	346.40	4,219.5	773.0	-186.9	795.2	0.00	0.00	
4,400.0	11.75	346.40	4,317.4	792.8	-191.7	815.6	0.00	0.00	
4,500.0	11.75	346.40	4,415.3	812.6	-196.5	835.9	0.00	0.00	
4,600.0	11.75	346.40	4,513.3	832.4	-201.3	856.3	0.00	0.00	
4,700.0	11.75	346.40	4,611.2	852.2	-206.1	876.7	0.00	0.00	
4,800.0	11.75	346.40	4,709.1	872.0	-210.9	897.0	0.00	0.00	

Cathedral Energy Services

Planning Report

Database:	EDM 5000.1 US Multi Users DB	Local Co-ordinate Reference:	Well 8513A-25 D36 496
Company:	EnCana Oil & Gas (USA) Inc	TVD Reference:	KBE @ 8324.0ft
Project:	Story Gulch	MD Reference:	KBE @ 8324.0ft
Site:	S36-T4S-R96W (D36 496)	North Reference:	True
Well:	8513A-25 D36 496	Survey Calculation Method:	Minimum Curvature
Wellbore:	DD		
Design:	Plan #2		

Planned Survey									
Measured Depth (ft)	Inclination (°)	Azimuth (°)	Vertical Depth (ft)	+N/-S (ft)	+E/-W (ft)	Vertical Section (ft)	Dogleg Rate (°/100ft)	Build Rate (°/100ft)	Comments / Formations
4,900.0	11.75	346.40	4,807.0	891.8	-215.7	917.4	0.00	0.00	
5,000.0	11.75	346.40	4,904.9	911.5	-220.4	937.8	0.00	0.00	
5,100.0	11.75	346.40	5,002.8	931.3	-225.2	958.1	0.00	0.00	
5,200.0	11.75	346.40	5,100.7	951.1	-230.0	978.5	0.00	0.00	
5,300.0	11.75	346.40	5,198.6	970.9	-234.8	998.9	0.00	0.00	
5,400.0	11.75	346.40	5,296.5	990.7	-239.6	1,019.2	0.00	0.00	
5,500.0	11.75	346.40	5,394.4	1,010.5	-244.4	1,039.6	0.00	0.00	
5,600.0	11.75	346.40	5,492.3	1,030.3	-249.2	1,059.9	0.00	0.00	
5,700.0	11.75	346.40	5,590.2	1,050.1	-254.0	1,080.3	0.00	0.00	
5,800.0	11.75	346.40	5,688.1	1,069.9	-258.7	1,100.7	0.00	0.00	
5,900.0	11.75	346.40	5,786.0	1,089.7	-263.5	1,121.0	0.00	0.00	
5,954.1	11.75	346.40	5,839.0	1,100.4	-266.1	1,132.1	0.00	0.00	WASATCH_G (TVD)
6,000.0	11.75	346.40	5,883.9	1,109.5	-268.3	1,141.4	0.00	0.00	
6,100.0	11.75	346.40	5,981.8	1,129.3	-273.1	1,161.8	0.00	0.00	
6,200.0	11.75	346.40	6,079.7	1,149.1	-277.9	1,182.1	0.00	0.00	
6,300.0	11.75	346.40	6,177.6	1,168.9	-282.7	1,202.5	0.00	0.00	
6,400.0	11.75	346.40	6,275.5	1,188.7	-287.5	1,222.9	0.00	0.00	
6,500.0	11.75	346.40	6,373.4	1,208.5	-292.3	1,243.2	0.00	0.00	
6,600.0	11.75	346.40	6,471.3	1,228.3	-297.0	1,263.6	0.00	0.00	
6,700.0	11.75	346.40	6,569.2	1,248.1	-301.8	1,284.0	0.00	0.00	
6,800.0	11.75	346.40	6,667.1	1,267.9	-306.6	1,304.3	0.00	0.00	
6,900.0	11.75	346.40	6,765.0	1,287.7	-311.4	1,324.7	0.00	0.00	
7,000.0	11.75	346.40	6,863.0	1,307.5	-316.2	1,345.1	0.00	0.00	
7,100.0	11.75	346.40	6,960.9	1,327.3	-321.0	1,365.4	0.00	0.00	
7,200.0	11.75	346.40	7,058.8	1,347.0	-325.8	1,385.8	0.00	0.00	
7,300.0	11.75	346.40	7,156.7	1,366.8	-330.6	1,406.1	0.00	0.00	
7,400.0	11.75	346.40	7,254.6	1,386.6	-335.3	1,426.5	0.00	0.00	
7,500.0	11.75	346.40	7,352.5	1,406.4	-340.1	1,446.9	0.00	0.00	
7,600.0	11.75	346.40	7,450.4	1,426.2	-344.9	1,467.2	0.00	0.00	
7,700.0	11.75	346.40	7,548.3	1,446.0	-349.7	1,487.6	0.00	0.00	
7,800.0	11.75	346.40	7,646.2	1,465.8	-354.5	1,508.0	0.00	0.00	
7,880.5	11.75	346.40	7,725.0	1,481.8	-358.3	1,524.4	0.00	0.00	Start Drop -3.00
7,900.0	11.17	346.40	7,744.1	1,485.5	-359.3	1,528.2	3.00	-3.00	
8,000.0	8.17	346.40	7,842.7	1,501.8	-363.2	1,545.0	3.00	-3.00	
8,100.0	5.17	346.40	7,942.0	1,513.1	-365.9	1,556.6	3.00	-3.00	
8,200.0	2.17	346.40	8,041.8	1,519.3	-367.4	1,563.0	3.00	-3.00	
8,241.2	0.93	346.40	8,083.0	1,520.4	-367.7	1,564.1	3.00	-3.00	WILLIAMS_FORK (TVD)
8,272.2	0.00	0.00	8,114.0	1,520.7	-367.8	1,564.4	3.00	-3.00	EOD; Inc=0° - D36 495 8513A-25 TGT (2)
8,281.2	0.02	239.54	8,123.0	1,520.7	-367.8	1,564.4	0.25	0.25	TOG (TVD)
8,300.0	0.07	239.54	8,141.8	1,520.7	-367.8	1,564.4	0.25	0.25	
8,391.2	0.30	239.54	8,232.9	1,520.5	-368.0	1,564.3	0.25	0.25	
8,400.0	0.30	239.54	8,241.8	1,520.5	-368.1	1,564.3	0.00	0.00	
8,462.3	0.30	239.54	8,304.1	1,520.3	-368.3	1,564.2	0.00	0.00	D36 495 8513A-25 TGT
8,500.0	0.30	239.54	8,341.8	1,520.2	-368.5	1,564.2	0.00	0.00	
8,600.0	0.30	239.54	8,441.8	1,520.0	-369.0	1,564.0	0.00	0.00	
8,700.0	0.30	239.54	8,541.8	1,519.7	-369.4	1,563.9	0.00	0.00	
8,800.0	0.30	239.54	8,641.7	1,519.4	-369.9	1,563.7	0.00	0.00	
8,900.0	0.30	239.54	8,741.7	1,519.2	-370.3	1,563.6	0.00	0.00	
9,000.0	0.30	239.54	8,841.7	1,518.9	-370.7	1,563.4	0.00	0.00	
9,100.0	0.30	239.54	8,941.7	1,518.6	-371.2	1,563.3	0.00	0.00	
9,200.0	0.30	239.54	9,041.7	1,518.4	-371.6	1,563.1	0.00	0.00	
9,300.0	0.30	239.54	9,141.7	1,518.1	-372.1	1,563.0	0.00	0.00	

Cathedral Energy Services

Planning Report

Database:	EDM 5000.1 US Multi Users DB	Local Co-ordinate Reference:	Well 8513A-25 D36 496
Company:	EnCana Oil & Gas (USA) Inc	TVD Reference:	KBE @ 8324.0ft
Project:	Story Gulch	MD Reference:	KBE @ 8324.0ft
Site:	S36-T4S-R96W (D36 496)	North Reference:	True
Well:	8513A-25 D36 496	Survey Calculation Method:	Minimum Curvature
Wellbore:	DD		
Design:	Plan #2		

Planned Survey									
Measured Depth (ft)	Inclination (°)	Azimuth (°)	Vertical Depth (ft)	+N/-S (ft)	+E/-W (ft)	Vertical Section (ft)	Dogleg Rate (°/100ft)	Build Rate (°/100ft)	Comments / Formations
9,400.0	0.30	239.54	9,241.7	1,517.9	-372.5	1,562.9	0.00	0.00	
9,500.0	0.30	239.54	9,341.7	1,517.6	-373.0	1,562.7	0.00	0.00	
9,600.0	0.30	239.54	9,441.7	1,517.3	-373.4	1,562.6	0.00	0.00	
9,700.0	0.30	239.54	9,541.7	1,517.1	-373.9	1,562.4	0.00	0.00	
9,800.0	0.30	239.54	9,641.7	1,516.8	-374.3	1,562.3	0.00	0.00	
9,900.0	0.30	239.54	9,741.7	1,516.5	-374.8	1,562.1	0.00	0.00	
10,000.0	0.30	239.54	9,841.7	1,516.3	-375.2	1,562.0	0.00	0.00	
10,100.0	0.30	239.54	9,941.7	1,516.0	-375.7	1,561.8	0.00	0.00	
10,200.0	0.30	239.54	10,041.7	1,515.8	-376.1	1,561.7	0.00	0.00	
10,300.0	0.30	239.54	10,141.7	1,515.5	-376.6	1,561.5	0.00	0.00	
10,400.0	0.30	239.54	10,241.7	1,515.2	-377.0	1,561.4	0.00	0.00	
10,500.0	0.30	239.54	10,341.7	1,515.0	-377.5	1,561.3	0.00	0.00	
10,600.0	0.30	239.54	10,441.7	1,514.7	-377.9	1,561.1	0.00	0.00	
10,700.0	0.30	239.54	10,541.7	1,514.4	-378.4	1,561.0	0.00	0.00	
10,800.0	0.30	239.54	10,641.7	1,514.2	-378.8	1,560.8	0.00	0.00	
10,900.0	0.30	239.54	10,741.7	1,513.9	-379.2	1,560.7	0.00	0.00	
11,000.0	0.30	239.54	10,841.7	1,513.7	-379.7	1,560.5	0.00	0.00	
11,100.0	0.30	239.54	10,941.7	1,513.4	-380.1	1,560.4	0.00	0.00	
11,200.0	0.30	239.54	11,041.7	1,513.1	-380.6	1,560.2	0.00	0.00	
11,300.0	0.30	239.54	11,141.7	1,512.9	-381.0	1,560.1	0.00	0.00	
11,400.0	0.30	239.54	11,241.7	1,512.6	-381.5	1,560.0	0.00	0.00	
11,500.0	0.30	239.54	11,341.7	1,512.3	-381.9	1,559.8	0.00	0.00	
11,600.0	0.30	239.54	11,441.7	1,512.1	-382.4	1,559.7	0.00	0.00	
11,700.0	0.30	239.54	11,541.7	1,511.8	-382.8	1,559.5	0.00	0.00	
11,800.0	0.30	239.54	11,641.7	1,511.5	-383.3	1,559.4	0.00	0.00	
11,900.0	0.30	239.54	11,741.7	1,511.3	-383.7	1,559.2	0.00	0.00	
12,000.0	0.30	239.54	11,841.7	1,511.0	-384.2	1,559.1	0.00	0.00	
12,100.0	0.30	239.54	11,941.7	1,510.8	-384.6	1,558.9	0.00	0.00	
12,122.3	0.30	239.54	11,964.0	1,510.7	-384.7	1,558.9	0.00	0.00	D36 495 8513A-25 PBHL
12,124.3	0.30	239.54	11,966.0	1,510.7	-384.7	1,558.9	0.00	0.00	D36 495 8513A-25 PBHL (2)
12,133.3	0.30	239.54	11,975.0	1,510.7	-384.8	1,558.9	0.00	0.00	ROLLINS (TVD)
12,200.0	0.30	239.54	12,041.7	1,510.5	-385.1	1,558.8	0.00	0.00	
12,224.3	0.30	239.54	12,066.0	1,510.4	-385.2	1,558.8	0.00	0.00	Drillers TD @ 12224.3' MD
12,300.0	0.30	239.54	12,141.7	1,510.2	-385.5	1,558.7	0.00	0.00	
12,380.3	0.30	239.54	12,222.0	1,510.0	-385.9	1,558.5	0.00	0.00	COZZETTE (TVD)
12,400.0	0.30	239.54	12,241.7	1,510.0	-386.0	1,558.5	0.00	0.00	
12,500.0	0.30	239.54	12,341.7	1,509.7	-386.4	1,558.4	0.00	0.00	
12,600.0	0.30	239.54	12,441.7	1,509.4	-386.9	1,558.2	0.00	0.00	
12,605.3	0.30	239.54	12,447.0	1,509.4	-386.9	1,558.2	0.00	0.00	CORCORAN (TVD)
12,673.3	0.30	239.54	12,515.0	1,509.2	-387.2	1,558.1	0.00	0.00	LOWER_SEGO (TVD)
12,700.0	0.30	239.54	12,541.7	1,509.2	-387.3	1,558.1	0.00	0.00	
12,800.0	0.30	239.54	12,641.7	1,508.9	-387.7	1,557.9	0.00	0.00	
12,825.3	0.30	239.54	12,667.0	1,508.8	-387.9	1,557.9	0.00	0.00	SEGO (TVD)
12,900.0	0.30	239.54	12,741.7	1,508.7	-388.2	1,557.8	0.00	0.00	
13,000.0	0.30	239.54	12,841.7	1,508.4	-388.6	1,557.6	0.00	0.00	
13,100.0	0.30	239.54	12,941.7	1,508.1	-389.1	1,557.5	0.00	0.00	
13,200.0	0.30	239.54	13,041.7	1,507.9	-389.5	1,557.4	0.00	0.00	
13,224.3	0.30	239.54	13,066.0	1,507.8	-389.6	1,557.3	0.00	0.00	Permit TD @ 13224.3' MD

Cathedral Energy Services

Planning Report

Database:	EDM 5000.1 US Multi Users DB	Local Co-ordinate Reference:	Well 8513A-25 D36 496
Company:	EnCana Oil & Gas (USA) Inc	TVD Reference:	KBE @ 8324.0ft
Project:	Story Gulch	MD Reference:	KBE @ 8324.0ft
Site:	S36-T4S-R96W (D36 496)	North Reference:	True
Well:	8513A-25 D36 496	Survey Calculation Method:	Minimum Curvature
Wellbore:	DD		
Design:	Plan #2		

Targets									
Target Name									
- hit/miss target	Dip Angle	Dip Dir.	TVD	+N/-S	+E/-W	Northing	Easting	Latitude	Longitude
- Shape	(°)	(°)	(ft)	(ft)	(ft)	(ft)	(ft)		
D36 495 8513A-25 PBH	0.00	0.00	11,964.0	1,522.8	-383.2	1,679,336.89	2,261,394.87	39° 40' 9.42 N	108° 7' 26.93 W
- plan misses target center by 12.2ft at 12122.3ft MD (11964.0 TVD, 1510.7 N, -384.7 E)									
- Rectangle (sides W30.0 H50.0 D0.0)									
D36 495 8513A-25 TGT	0.00	0.00	8,114.0	1,520.7	-367.8	1,679,334.28	2,261,410.21	39° 40' 9.40 N	108° 7' 26.73 W
- plan hits target center									
- Point									
D36 495 8513A-25 TGT	0.00	0.00	8,304.0	1,522.8	-383.2	1,679,336.89	2,261,394.87	39° 40' 9.42 N	108° 7' 26.93 W
- plan misses target center by 15.0ft at 8462.3ft MD (8304.1 TVD, 1520.3 N, -368.3 E)									
- Point									
D36 495 8513A-25 PBH	0.00	0.00	11,966.0	1,510.7	-384.7	1,679,324.80	2,261,392.96	39° 40' 9.30 N	108° 7' 26.95 W
- plan hits target center									
- Rectangle (sides W30.0 H50.0 D0.0)									

Formations						
Measured Depth	Vertical Depth	Name	Lithology	Dip	Dip Direction	
(ft)	(ft)			(°)	(°)	
1,277.1	1,260.0	A_GROOVE (TVD)				
2,484.4	2,442.0	GARDEN_GULCH / L-1 (TVD)				
5,954.1	5,839.0	WASATCH_G (TVD)				
8,241.2	8,083.0	WILLIAMS_FORK (TVD)				
8,281.2	8,123.0	TOG (TVD)				
12,133.3	11,975.0	ROLLINS (TVD)				
12,380.3	12,222.0	COZZETTE (TVD)				
12,605.3	12,447.0	CORCORAN (TVD)				
12,673.3	12,515.0	LOWER_SEGO (TVD)				
12,825.3	12,667.0	SEGO (TVD)				

Plan Annotations					
Measured Depth	Vertical Depth	Local Coordinates			
(ft)	(ft)	+N/-S (ft)	+E/-W (ft)	Comment	
200.0	200.0	0.0	0.0	KOP @ 200' MD	
591.7	589.0	38.9	-9.4	EOB; Inc=11.75°	
7,880.5	7,725.0	1,481.8	-358.3	Start Drop -3.00	
8,272.2	8,114.0	1,520.7	-367.8	EOD; Inc=0°	
12,224.3	12,066.0	1,520.5	-368.0	Drillers TD @ 12224.3' MD	
13,224.3	13,066.0	1,510.7	-384.7	Permit TD @ 13224.3' MD	