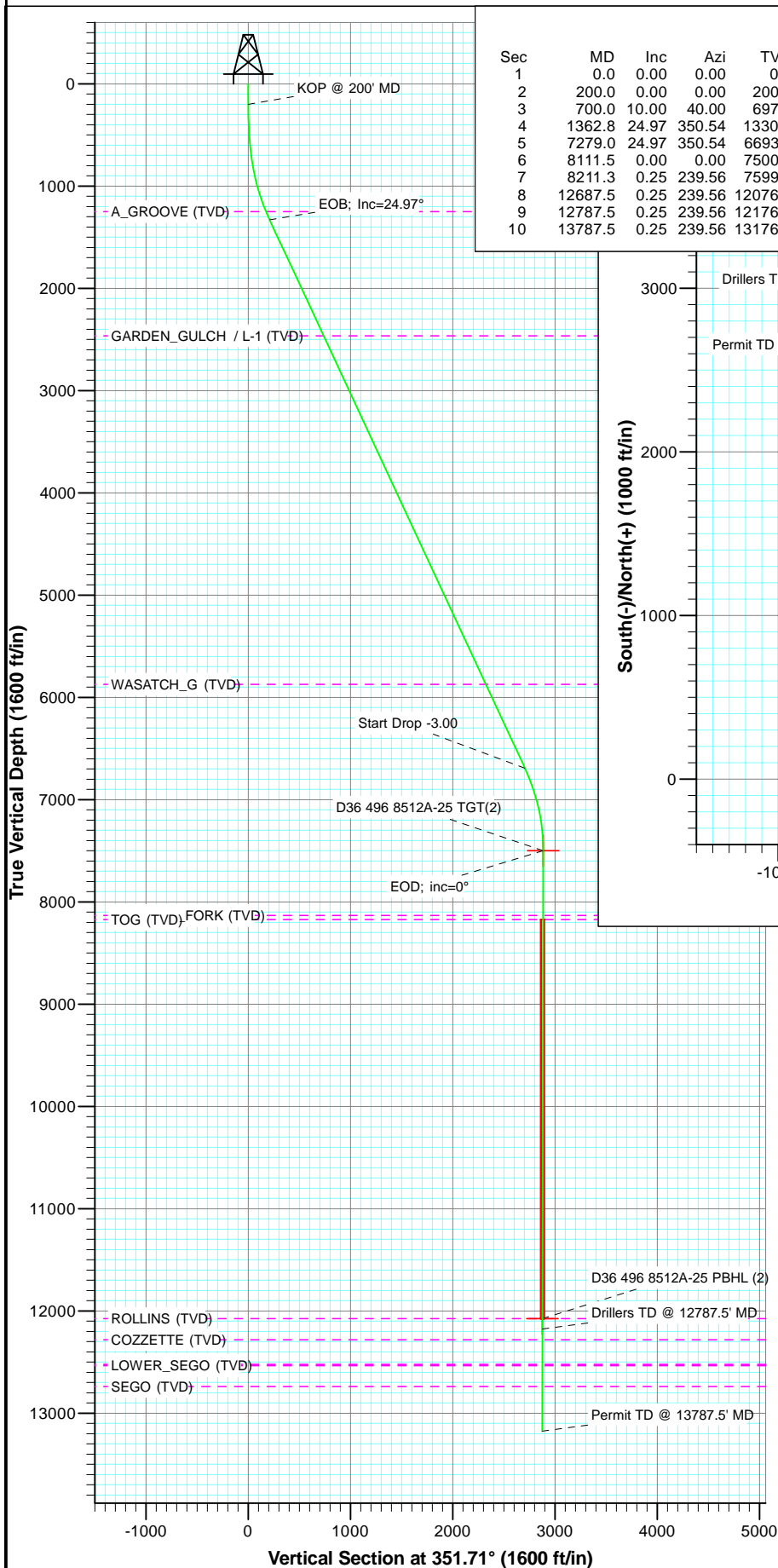
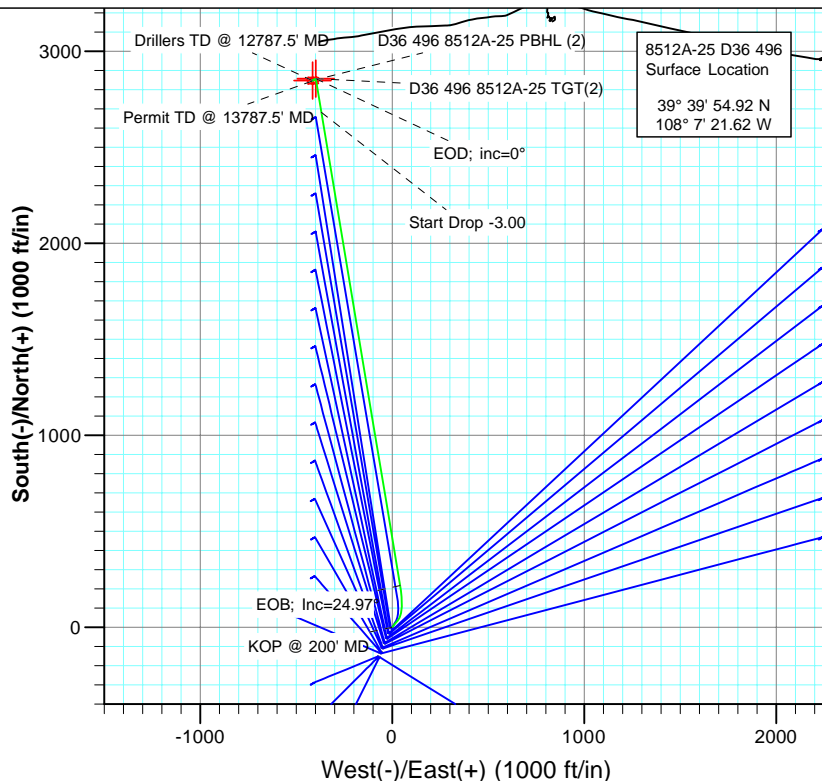




Project: Story Gulch
Site: S36-T4S-R96W (D36 496)
Well: 8512A-25 D36 496
Wellbore: DD
Plan: Plan #2



SECTION DETAILS										
Sec	MD	Inc	Azi	TVD	+N/-S	+E/-W	Dleg	TFace	Vsect	Target
1	0.0	0.00	0.00	0.0	0.0	0.0	0.00	0.00	0.0	
2	200.0	0.00	0.00	200.0	0.0	0.0	0.00	0.00	0.0	
3	700.0	10.00	40.00	697.5	33.3	28.0	2.00	40.00	29.0	
4	1362.8	24.97	350.54	1330.6	217.3	42.1	3.00	-70.62	208.9	
5	7279.0	24.97	350.54	6693.7	2681.2	-368.4	0.00	0.00	2706.3	
6	8111.5	0.00	0.00	7500.0	2857.3	-397.7	3.00	180.00	2884.8	D36 496 8512A-25 TGT(2)
7	8211.3	0.25	239.56	7599.8	2857.2	-397.9	0.25	239.56	2884.7	
8	12687.5	0.25	239.56	12076.0	2847.3	-414.7	0.00	0.00	2877.4	D36 496 8512A-25 PBHL (2)
9	12787.5	0.25	239.56	12176.0	2847.1	-415.1	0.00	0.00	2877.2	
10	13787.5	0.25	239.56	13176.0	2844.9	-418.8	0.00	0.00	2875.5	

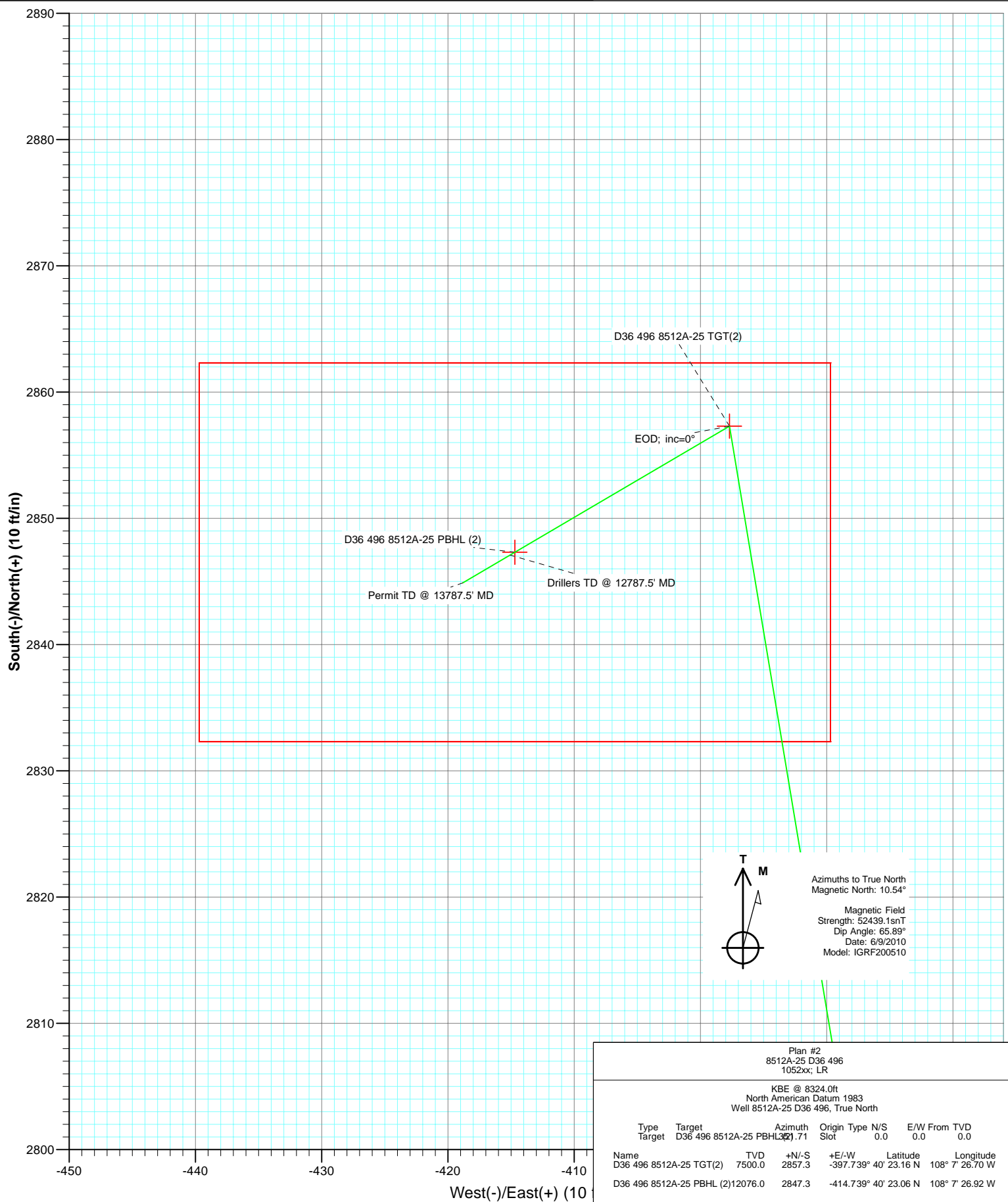


FORMATION TOP DETAILS		
TVDPath	MDPath	Formation
1251.0	1275.8	A_GROOVE (TVD)
2465.0	2614.2	GARDEN_GULCH / L-1 (TVD)
5872.0	6372.6	WASATCH_G (TVD)
8133.0	8744.5	WILLIAMS_FORK (TVD)
8173.0	8784.5	TOG (TVD)
12076.0	12687.5	ROLLINS (TVD)
12283.0	12894.5	COZZETTE (TVD)
12523.0	13134.5	CORCORAN (TVD)
12535.0	13146.5	LOWER_SEGO (TVD)
12740.0	13351.5	SEGO (TVD)



Azimuths to True North
Magnetic North: 10.54°
Magnetic Field
Strength: 52439.1nT
Dip Angle: 65.89°
Date: 6/9/2010
Model: IGRF200510

Plan #2 8512A-25 D36 496 1052xx; LR						
KBE @ 8324.0ft North American Datum 1983 Well 8512A-25 D36 496, True North						
Type	Target	Azimuth	Origin	Type	N/S	E/W From TVD
Target	D36 496 8512A-25 PBHL(2)	287.71	Slot	0.0	0.0	0.0
Name	Target	TVD	+N/-S	+E/-W	Latitude	Longitude
D36 496 8512A-25 TGT(2)	7500.0	2857.3	-397.739° 40'	23.16 N	108° 7' 26.70 W	
D36 496 8512A-25 PBHL (2)	12076.0	2847.3	-414.739° 40'	23.06 N	108° 7' 26.92 W	



Cathedral Energy Services

Planning Report

Database:	EDM 5000.1 US Multi Users DB	Local Co-ordinate Reference:	Well 8512A-25 D36 496
Company:	EnCana Oil & Gas (USA) Inc	TVD Reference:	KBE @ 8324.0ft
Project:	Story Gulch	MD Reference:	KBE @ 8324.0ft
Site:	S36-T4S-R96W (D36 496)	North Reference:	True
Well:	8512A-25 D36 496	Survey Calculation Method:	Minimum Curvature
Wellbore:	DD		
Design:	Plan #2		

Project	Story Gulch		
Map System:	US State Plane 1983	System Datum:	Mean Sea Level
Geo Datum:	North American Datum 1983		
Map Zone:	Colorado Central Zone		

Site		S36-T4S-R96W (D36 496)			
Site Position:		Northing:	1,677,676.10 ft	Latitude:	39° 39' 53.09 N
From:	Lat/Long	Easting:	2,261,675.01 ft	Longitude:	108° 7' 22.74 W
Position Uncertainty:	0.0 ft	Slot Radius:	13.200 in	Grid Convergence:	-1.65 °

Well	8512A-25 D36 496					
Well Position	+N/-S	0.0 ft	Northing:	1,677,858.34 ft	Latitude:	39° 39' 54.92 N
	+E/-W	0.0 ft	Easting:	2,261,767.85 ft	Longitude:	108° 7' 21.62 W
Position Uncertainty		0.0 ft	Wellhead Elevation:	ft	Ground Level:	8,302.0 ft

Wellbore	DD				
Magnetics	Model Name	Sample Date	Declination (°)	Dip Angle (°)	Field Strength (nT)
	IGRF200510	6/9/2010	10.54	65.89	52,439

Design	Plan #2			
Audit Notes:				
Version:	Phase:	PLAN	Tie On Depth:	0.0
Vertical Section:	Depth From (TVD) (ft)	+N/-S (ft)	+E/-W (ft)	Direction (°)
	0.0	0.0	0.0	351.71

Plan Sections										
Measured Depth (ft)	Inclination (°)	Azimuth (°)	Vertical Depth (ft)	+N/-S (ft)	+E/-W (ft)	Dogleg Rate (°/100ft)	Build Rate (°/100ft)	Turn Rate (°/100ft)	TFO (°)	Target
0.0	0.00	0.00	0.0	0.0	0.0	0.00	0.00	0.00	0.00	
200.0	0.00	0.00	200.0	0.0	0.0	0.00	0.00	0.00	0.00	
700.0	10.00	40.00	697.5	33.3	28.0	2.00	2.00	0.00	40.00	
1,362.8	24.97	350.54	1,330.6	217.3	42.1	3.00	2.26	-7.46	-70.62	
7,279.0	24.97	350.54	6,693.7	2,681.2	-368.4	0.00	0.00	0.00	0.00	
8,111.5	0.00	0.00	7,500.0	2,857.3	-397.7	3.00	-3.00	0.00	180.00	D36 496 8512A-25 TC
8,211.3	0.25	239.56	7,599.8	2,857.2	-397.9	0.25	0.25	-120.66	239.56	
12,687.5	0.25	239.56	12,076.0	2,847.3	-414.7	0.00	0.00	0.00	0.00	D36 496 8512A-25 Pf
12,787.5	0.25	239.56	12,176.0	2,847.1	-415.1	0.00	0.00	0.00	0.00	
13,787.5	0.25	239.56	13,176.0	2,844.9	-418.8	0.00	0.00	0.00	0.00	

Cathedral Energy Services

Planning Report

Database:	EDM 5000.1 US Multi Users DB	Local Co-ordinate Reference:	Well 8512A-25 D36 496
Company:	EnCana Oil & Gas (USA) Inc	TVD Reference:	KBE @ 8324.0ft
Project:	Story Gulch	MD Reference:	KBE @ 8324.0ft
Site:	S36-T4S-R96W (D36 496)	North Reference:	True
Well:	8512A-25 D36 496	Survey Calculation Method:	Minimum Curvature
Wellbore:	DD		
Design:	Plan #2		

Planned Survey

Measured Depth (ft)	Inclination (°)	Azimuth (°)	Vertical Depth (ft)	+N/-S (ft)	+E/-W (ft)	Vertical Section (ft)	Dogleg Rate (°/100ft)	Build Rate (°/100ft)	Comments / Formations
0.0	0.00	0.00	0.0	0.0	0.0	0.0	0.00	0.00	
100.0	0.00	0.00	100.0	0.0	0.0	0.0	0.00	0.00	
200.0	0.00	0.00	200.0	0.0	0.0	0.0	0.00	0.00	KOP @ 200' MD
300.0	2.00	40.00	300.0	1.3	1.1	1.2	2.00	2.00	
400.0	4.00	40.00	399.8	5.3	4.5	4.6	2.00	2.00	
500.0	6.00	40.00	499.5	12.0	10.1	10.4	2.00	2.00	
600.0	8.00	40.00	598.7	21.4	17.9	18.6	2.00	2.00	
700.0	10.00	40.00	697.5	33.3	28.0	29.0	2.00	2.00	
800.0	11.35	25.47	795.8	48.9	37.8	42.9	3.00	1.35	
900.0	13.25	14.51	893.5	68.9	44.9	61.7	3.00	1.90	
1,000.0	15.49	6.46	990.3	93.2	49.3	85.2	3.00	2.24	
1,100.0	17.95	0.48	1,086.1	121.9	50.9	113.3	3.00	2.46	
1,200.0	20.55	355.94	1,180.5	154.8	49.8	146.1	3.00	2.60	
1,275.8	22.59	353.18	1,251.0	182.6	47.1	173.9	3.00	2.68	A_GROOVE (TVD)
1,300.0	23.25	352.39	1,273.3	191.9	45.9	183.3	3.00	2.72	
1,362.8	24.97	350.54	1,330.6	217.3	42.1	209.0	3.00	2.75	EOB; Inc=24.97°
1,400.0	24.97	350.54	1,364.3	232.8	39.5	224.7	0.00	0.00	
1,500.0	24.97	350.54	1,455.0	274.4	32.6	266.9	0.00	0.00	
1,600.0	24.97	350.54	1,545.6	316.1	25.7	309.1	0.00	0.00	
1,700.0	24.97	350.54	1,636.3	357.7	18.7	351.3	0.00	0.00	
1,800.0	24.97	350.54	1,726.9	399.4	11.8	393.5	0.00	0.00	
1,900.0	24.97	350.54	1,817.6	441.0	4.8	435.7	0.00	0.00	
2,000.0	24.97	350.54	1,908.2	482.7	-2.1	477.9	0.00	0.00	
2,100.0	24.97	350.54	1,998.9	524.3	-9.0	520.1	0.00	0.00	
2,200.0	24.97	350.54	2,089.5	566.0	-16.0	562.3	0.00	0.00	
2,300.0	24.97	350.54	2,180.2	607.6	-22.9	604.6	0.00	0.00	
2,400.0	24.97	350.54	2,270.8	649.2	-29.8	646.8	0.00	0.00	
2,500.0	24.97	350.54	2,361.5	690.9	-36.8	689.0	0.00	0.00	
2,600.0	24.97	350.54	2,452.1	732.5	-43.7	731.2	0.00	0.00	
2,614.2	24.97	350.54	2,465.0	738.4	-44.7	737.2	0.00	0.00	GARDEN_GULCH / L-1 (TVD)
2,700.0	24.97	350.54	2,542.8	774.2	-50.7	773.4	0.00	0.00	
2,800.0	24.97	350.54	2,633.4	815.8	-57.6	815.6	0.00	0.00	
2,900.0	24.97	350.54	2,724.1	857.5	-64.5	857.8	0.00	0.00	
3,000.0	24.97	350.54	2,814.7	899.1	-71.5	900.0	0.00	0.00	
3,100.0	24.97	350.54	2,905.4	940.8	-78.4	942.2	0.00	0.00	
3,200.0	24.97	350.54	2,996.0	982.4	-85.4	984.5	0.00	0.00	
3,300.0	24.97	350.54	3,086.7	1,024.1	-92.3	1,026.7	0.00	0.00	
3,400.0	24.97	350.54	3,177.3	1,065.7	-99.2	1,068.9	0.00	0.00	
3,500.0	24.97	350.54	3,268.0	1,107.4	-106.2	1,111.1	0.00	0.00	
3,600.0	24.97	350.54	3,358.6	1,149.0	-113.1	1,153.3	0.00	0.00	
3,700.0	24.97	350.54	3,449.3	1,190.6	-120.0	1,195.5	0.00	0.00	
3,800.0	24.97	350.54	3,539.9	1,232.3	-127.0	1,237.7	0.00	0.00	
3,900.0	24.97	350.54	3,630.6	1,273.9	-133.9	1,279.9	0.00	0.00	
4,000.0	24.97	350.54	3,721.2	1,315.6	-140.9	1,322.1	0.00	0.00	
4,100.0	24.97	350.54	3,811.9	1,357.2	-147.8	1,364.4	0.00	0.00	
4,200.0	24.97	350.54	3,902.5	1,398.9	-154.7	1,406.6	0.00	0.00	
4,300.0	24.97	350.54	3,993.2	1,440.5	-161.7	1,448.8	0.00	0.00	
4,400.0	24.97	350.54	4,083.8	1,482.2	-168.6	1,491.0	0.00	0.00	
4,500.0	24.97	350.54	4,174.5	1,523.8	-175.5	1,533.2	0.00	0.00	
4,600.0	24.97	350.54	4,265.1	1,565.5	-182.5	1,575.4	0.00	0.00	
4,700.0	24.97	350.54	4,355.8	1,607.1	-189.4	1,617.6	0.00	0.00	
4,800.0	24.97	350.54	4,446.4	1,648.8	-196.4	1,659.8	0.00	0.00	

Cathedral Energy Services

Planning Report

Database:	EDM 5000.1 US Multi Users DB	Local Co-ordinate Reference:	Well 8512A-25 D36 496
Company:	EnCana Oil & Gas (USA) Inc	TVD Reference:	KBE @ 8324.0ft
Project:	Story Gulch	MD Reference:	KBE @ 8324.0ft
Site:	S36-T4S-R96W (D36 496)	North Reference:	True
Well:	8512A-25 D36 496	Survey Calculation Method:	Minimum Curvature
Wellbore:	DD		
Design:	Plan #2		

Planned Survey									
Measured Depth (ft)	Inclination (°)	Azimuth (°)	Vertical Depth (ft)	+N/-S (ft)	+E/-W (ft)	Vertical Section (ft)	Dogleg Rate (°/100ft)	Build Rate (°/100ft)	Comments / Formations
4,900.0	24.97	350.54	4,537.1	1,690.4	-203.3	1,702.1	0.00	0.00	
5,000.0	24.97	350.54	4,627.7	1,732.0	-210.2	1,744.3	0.00	0.00	
5,100.0	24.97	350.54	4,718.4	1,773.7	-217.2	1,786.5	0.00	0.00	
5,200.0	24.97	350.54	4,809.0	1,815.3	-224.1	1,828.7	0.00	0.00	
5,300.0	24.97	350.54	4,899.7	1,857.0	-231.1	1,870.9	0.00	0.00	
5,400.0	24.97	350.54	4,990.3	1,898.6	-238.0	1,913.1	0.00	0.00	
5,500.0	24.97	350.54	5,081.0	1,940.3	-244.9	1,955.3	0.00	0.00	
5,600.0	24.97	350.54	5,171.6	1,981.9	-251.9	1,997.5	0.00	0.00	
5,700.0	24.97	350.54	5,262.3	2,023.6	-258.8	2,039.7	0.00	0.00	
5,800.0	24.97	350.54	5,352.9	2,065.2	-265.7	2,082.0	0.00	0.00	
5,900.0	24.97	350.54	5,443.6	2,106.9	-272.7	2,124.2	0.00	0.00	
6,000.0	24.97	350.54	5,534.2	2,148.5	-279.6	2,166.4	0.00	0.00	
6,100.0	24.97	350.54	5,624.9	2,190.2	-286.6	2,208.6	0.00	0.00	
6,200.0	24.97	350.54	5,715.5	2,231.8	-293.5	2,250.8	0.00	0.00	
6,300.0	24.97	350.54	5,806.2	2,273.4	-300.4	2,293.0	0.00	0.00	
6,372.6	24.97	350.54	5,872.0	2,303.7	-305.5	2,323.7	0.00	0.00	WASATCH_G (TVD)
6,400.0	24.97	350.54	5,896.8	2,315.1	-307.4	2,335.2	0.00	0.00	
6,500.0	24.97	350.54	5,987.5	2,356.7	-314.3	2,377.4	0.00	0.00	
6,600.0	24.97	350.54	6,078.1	2,398.4	-321.2	2,419.6	0.00	0.00	
6,700.0	24.97	350.54	6,168.8	2,440.0	-328.2	2,461.9	0.00	0.00	
6,800.0	24.97	350.54	6,259.4	2,481.7	-335.1	2,504.1	0.00	0.00	
6,900.0	24.97	350.54	6,350.1	2,523.3	-342.1	2,546.3	0.00	0.00	
7,000.0	24.97	350.54	6,440.7	2,565.0	-349.0	2,588.5	0.00	0.00	
7,100.0	24.97	350.54	6,531.4	2,606.6	-355.9	2,630.7	0.00	0.00	
7,200.0	24.97	350.54	6,622.0	2,648.3	-362.9	2,672.9	0.00	0.00	
7,279.0	24.97	350.54	6,693.7	2,681.2	-368.4	2,706.3	0.00	0.00	Start Drop -3.00
7,300.0	24.34	350.54	6,712.7	2,689.8	-369.8	2,715.0	3.00	-3.00	
7,400.0	21.34	350.54	6,804.9	2,728.1	-376.2	2,753.8	3.00	-3.00	
7,500.0	18.34	350.54	6,898.9	2,761.6	-381.8	2,787.8	3.00	-3.00	
7,600.0	15.34	350.54	6,994.6	2,790.2	-386.5	2,816.7	3.00	-3.00	
7,700.0	12.34	350.54	7,091.7	2,813.8	-390.4	2,840.6	3.00	-3.00	
7,800.0	9.34	350.54	7,189.9	2,832.3	-393.5	2,859.5	3.00	-3.00	
7,900.0	6.34	350.54	7,289.0	2,845.8	-395.8	2,873.1	3.00	-3.00	
8,000.0	3.34	350.54	7,388.6	2,854.1	-397.2	2,881.5	3.00	-3.00	
8,100.0	0.34	350.54	7,488.6	2,857.3	-397.7	2,884.8	3.00	-3.00	
8,111.5	0.00	350.54	7,500.0	2,857.3	-397.7	2,884.8	2.99	-2.99	EOD; inc=0° - D36 496 8512A-25 TGT(2)
8,200.0	0.22	239.56	7,588.5	2,857.2	-397.8	2,884.7	0.25	0.25	
8,211.3	0.25	239.56	7,599.8	2,857.2	-397.9	2,884.7	0.25	0.25	
8,300.0	0.25	239.56	7,688.5	2,857.0	-398.2	2,884.6	0.00	0.00	
8,400.0	0.25	239.56	7,788.5	2,856.8	-398.6	2,884.4	0.00	0.00	
8,500.0	0.25	239.56	7,888.5	2,856.6	-399.0	2,884.2	0.00	0.00	
8,600.0	0.25	239.56	7,988.5	2,856.3	-399.3	2,884.1	0.00	0.00	
8,700.0	0.25	239.56	8,088.5	2,856.1	-399.7	2,883.9	0.00	0.00	
8,744.5	0.25	239.56	8,133.0	2,856.0	-399.9	2,883.8	0.00	0.00	WILLIAMS_FORK (TVD)
8,784.5	0.25	239.56	8,173.0	2,855.9	-400.0	2,883.8	0.00	0.00	TOG (TVD)
8,800.0	0.25	239.56	8,188.5	2,855.9	-400.1	2,883.7	0.00	0.00	
8,900.0	0.25	239.56	8,288.5	2,855.7	-400.5	2,883.6	0.00	0.00	
8,995.6	0.25	239.56	8,384.2	2,855.5	-400.8	2,883.4	0.00	0.00	D36 496 8512A-25 TGT
9,000.0	0.25	239.56	8,388.5	2,855.4	-400.8	2,883.4	0.00	0.00	
9,100.0	0.25	239.56	8,488.5	2,855.2	-401.2	2,883.2	0.00	0.00	
9,200.0	0.25	239.56	8,588.5	2,855.0	-401.6	2,883.1	0.00	0.00	
9,300.0	0.25	239.56	8,688.5	2,854.8	-402.0	2,882.9	0.00	0.00	

Cathedral Energy Services

Planning Report

Database:	EDM 5000.1 US Multi Users DB	Local Co-ordinate Reference:	Well 8512A-25 D36 496
Company:	EnCana Oil & Gas (USA) Inc	TVD Reference:	KBE @ 8324.0ft
Project:	Story Gulch	MD Reference:	KBE @ 8324.0ft
Site:	S36-T4S-R96W (D36 496)	North Reference:	True
Well:	8512A-25 D36 496	Survey Calculation Method:	Minimum Curvature
Wellbore:	DD		
Design:	Plan #2		

Planned Survey									
Measured Depth (ft)	Inclination (°)	Azimuth (°)	Vertical Depth (ft)	+N/-S (ft)	+E/-W (ft)	Vertical Section (ft)	Dogleg Rate (°/100ft)	Build Rate (°/100ft)	Comments / Formations
9,400.0	0.25	239.56	8,788.5	2,854.6	-402.4	2,882.8	0.00	0.00	
9,500.0	0.25	239.56	8,888.5	2,854.3	-402.7	2,882.6	0.00	0.00	
9,600.0	0.25	239.56	8,988.5	2,854.1	-403.1	2,882.4	0.00	0.00	
9,700.0	0.25	239.56	9,088.5	2,853.9	-403.5	2,882.3	0.00	0.00	
9,800.0	0.25	239.56	9,188.5	2,853.7	-403.9	2,882.1	0.00	0.00	
9,900.0	0.25	239.56	9,288.5	2,853.5	-404.2	2,881.9	0.00	0.00	
10,000.0	0.25	239.56	9,388.5	2,853.2	-404.6	2,881.8	0.00	0.00	
10,100.0	0.25	239.56	9,488.5	2,853.0	-405.0	2,881.6	0.00	0.00	
10,200.0	0.25	239.56	9,588.5	2,852.8	-405.4	2,881.4	0.00	0.00	
10,300.0	0.25	239.56	9,688.5	2,852.6	-405.7	2,881.3	0.00	0.00	
10,400.0	0.25	239.56	9,788.5	2,852.4	-406.1	2,881.1	0.00	0.00	
10,500.0	0.25	239.56	9,888.5	2,852.1	-406.5	2,880.9	0.00	0.00	
10,600.0	0.25	239.56	9,988.5	2,851.9	-406.9	2,880.8	0.00	0.00	
10,700.0	0.25	239.56	10,088.5	2,851.7	-407.2	2,880.6	0.00	0.00	
10,800.0	0.25	239.56	10,188.5	2,851.5	-407.6	2,880.5	0.00	0.00	
10,900.0	0.25	239.56	10,288.5	2,851.3	-408.0	2,880.3	0.00	0.00	
11,000.0	0.25	239.56	10,388.5	2,851.0	-408.4	2,880.1	0.00	0.00	
11,100.0	0.25	239.56	10,488.5	2,850.8	-408.7	2,880.0	0.00	0.00	
11,200.0	0.25	239.56	10,588.5	2,850.6	-409.1	2,879.8	0.00	0.00	
11,300.0	0.25	239.56	10,688.5	2,850.4	-409.5	2,879.6	0.00	0.00	
11,400.0	0.25	239.56	10,788.5	2,850.2	-409.9	2,879.5	0.00	0.00	
11,500.0	0.25	239.56	10,888.5	2,849.9	-410.2	2,879.3	0.00	0.00	
11,600.0	0.25	239.56	10,988.5	2,849.7	-410.6	2,879.1	0.00	0.00	
11,700.0	0.25	239.56	11,088.5	2,849.5	-411.0	2,879.0	0.00	0.00	
11,800.0	0.25	239.56	11,188.5	2,849.3	-411.4	2,878.8	0.00	0.00	
11,900.0	0.25	239.56	11,288.5	2,849.0	-411.7	2,878.6	0.00	0.00	
12,000.0	0.25	239.56	11,388.5	2,848.8	-412.1	2,878.5	0.00	0.00	
12,100.0	0.25	239.56	11,488.5	2,848.6	-412.5	2,878.3	0.00	0.00	
12,200.0	0.25	239.56	11,588.5	2,848.4	-412.9	2,878.2	0.00	0.00	
12,300.0	0.25	239.56	11,688.5	2,848.2	-413.2	2,878.0	0.00	0.00	
12,400.0	0.25	239.56	11,788.5	2,847.9	-413.6	2,877.8	0.00	0.00	
12,500.0	0.25	239.56	11,888.5	2,847.7	-414.0	2,877.7	0.00	0.00	
12,600.0	0.25	239.56	11,988.5	2,847.5	-414.4	2,877.5	0.00	0.00	
12,687.5	0.25	239.56	12,076.0	2,847.3	-414.7	2,877.4	0.00	0.00	ROLLINS (TVD) - D36 496 8512A-25 PBHL (2)
12,700.0	0.25	239.56	12,088.5	2,847.3	-414.7	2,877.3	0.00	0.00	
12,787.5	0.25	239.56	12,176.0	2,847.1	-415.1	2,877.2	0.00	0.00	Drillers TD @ 12787.5' MD
12,800.0	0.25	239.56	12,188.5	2,847.1	-415.1	2,877.2	0.00	0.00	
12,894.5	0.25	239.56	12,283.0	2,846.9	-415.5	2,877.0	0.00	0.00	COZZETTE (TVD)
12,900.0	0.25	239.56	12,288.5	2,846.8	-415.5	2,877.0	0.00	0.00	
13,000.0	0.25	239.56	12,388.5	2,846.6	-415.9	2,876.8	0.00	0.00	
13,100.0	0.25	239.56	12,488.5	2,846.4	-416.2	2,876.7	0.00	0.00	
13,134.5	0.25	239.56	12,523.0	2,846.3	-416.4	2,876.6	0.00	0.00	CORCORAN (TVD)
13,146.5	0.25	239.56	12,535.0	2,846.3	-416.4	2,876.6	0.00	0.00	LOWER_SEGO (TVD)
13,200.0	0.25	239.56	12,588.5	2,846.2	-416.6	2,876.5	0.00	0.00	
13,300.0	0.25	239.56	12,688.5	2,846.0	-417.0	2,876.3	0.00	0.00	
13,351.5	0.25	239.56	12,740.0	2,845.8	-417.2	2,876.3	0.00	0.00	SEGO (TVD)
13,400.0	0.25	239.56	12,788.5	2,845.7	-417.4	2,876.2	0.00	0.00	
13,500.0	0.25	239.56	12,888.5	2,845.5	-417.7	2,876.0	0.00	0.00	
13,600.0	0.25	239.56	12,988.5	2,845.3	-418.1	2,875.9	0.00	0.00	
13,700.0	0.25	239.56	13,088.5	2,845.1	-418.5	2,875.7	0.00	0.00	
13,787.5	0.25	239.56	13,176.0	2,844.9	-418.8	2,875.5	0.00	0.00	Permit TD @ 13787.5' MD

Cathedral Energy Services

Planning Report

Database:	EDM 5000.1 US Multi Users DB	Local Co-ordinate Reference:	Well 8512A-25 D36 496
Company:	EnCana Oil & Gas (USA) Inc	TVD Reference:	KBE @ 8324.0ft
Project:	Story Gulch	MD Reference:	KBE @ 8324.0ft
Site:	S36-T4S-R96W (D36 496)	North Reference:	True
Well:	8512A-25 D36 496	Survey Calculation Method:	Minimum Curvature
Wellbore:	DD		
Design:	Plan #2		

Targets									
Target Name									
- hit/miss target	Dip Angle	Dip Dir.	TVD	+N/-S	+E/-W	Northing	Easting	Latitude	Longitude
- Shape	(°)	(°)	(ft)	(ft)	(ft)	(ft)	(ft)		
D36 496 8512A-25 PBH	0.00	0.00	12,076.0	2,847.3	-414.7	1,680,716.43	2,261,435.52	39° 40' 23.06 N	108° 7' 26.92 W
- plan hits target center									
- Rectangle (sides W30.0 H50.0 D0.0)									
D36 496 8512A-25 TGT	0.00	0.00	8,384.0	2,824.0	-424.9	1,680,693.47	2,261,424.68	39° 40' 22.83 N	108° 7' 27.05 W
- plan misses target center by 39.6ft at 8995.6ft MD (8384.2 TVD, 2855.5 N, -400.8 E)									
- Point									
D36 496 8512A-25 TGT	0.00	0.00	7,500.0	2,857.3	-397.7	1,680,725.93	2,261,452.79	39° 40' 23.16 N	108° 7' 26.70 W
- plan hits target center									
- Point									

Formations						
Measured Depth	Vertical Depth	Name	Lithology	Dip	Dip Direction	
(ft)	(ft)			(°)	(°)	
1,275.8	1,251.0	A_GROOVE (TVD)				
2,614.2	2,465.0	GARDEN_GULCH / L-1 (TVD)				
6,372.6	5,872.0	WASATCH_G (TVD)				
8,744.5	8,133.0	WILLIAMS_FORK (TVD)				
8,784.5	8,173.0	TOG (TVD)				
12,687.5	12,076.0	ROLLINS (TVD)				
12,894.5	12,283.0	COZZETTE (TVD)				
13,134.5	12,523.0	CORCORAN (TVD)				
13,146.5	12,535.0	LOWER_SEGO (TVD)				
13,351.5	12,740.0	SEGO (TVD)				

Plan Annotations				
Measured Depth	Vertical Depth	Local Coordinates		Comment
(ft)	(ft)	+N/-S (ft)	+E/-W (ft)	
200.0	200.0	0.0	0.0	KOP @ 200' MD
1,362.8	1,330.6	33.3	28.0	EOB; Inc=24.97°
7,279.0	6,693.7	217.3	42.1	Start Drop -3.00
8,111.5	7,500.0	2,681.2	-368.4	EOD; inc=0°
12,787.5	12,176.0	2,857.3	-397.7	Drillers TD @ 12787.5' MD
13,787.5	13,176.0	2,857.2	-397.9	Permit TD @ 13787.5' MD