

T4S, R96W, 6th P.M.

Encana OIL & GAS (USA) INC.

1953 Brass Cap
0.8' High, Mound
of Stones
Lat: 39.666042°
Long: 108.126567°

1953 Brass Cap
0.6' High, Steel
Post
Lat: 39.666053°
Long: 108.117142°

R
96
W

R
95
W

Well location, SG 8512A-25 D36 496 (SURFACE LOCATION), located as shown in Lot 4 of Section 36, T4S, R96W, 6th P.M., Garfield County, Colorado.

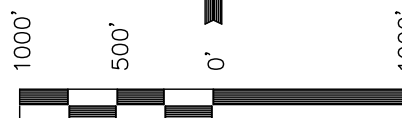
BASIS OF ELEVATION

BENCH MARK (H79) LOCATED IN THE NE 1/4 OF SECTION 35, T4S, R98W, 6th P.M. TAKEN FROM THE BULL FORK QUADRANGLE, COLORADO, 7.5 MINUTE SERIES (TOPOGRAPHICAL MAP) PUBLISHED BY THE UNITED STATES DEPARTMENT OF THE INTERIOR, GEOLOGICAL SURVEY. SAID ELEVATION IS MARKED AS BEING 8535 FEET.

BASIS OF BEARINGS

BASIS OF BEARINGS IS A G.P.S. OBSERVATION.

Sheet 1uu of 11



SCALE

CERTIFICATE

THIS IS TO CERTIFY THAT THE ABOVE PLAT WAS PREPARED FROM FIELD NOTES OF ACTUAL SURVEYS MADE BY ME OR UNDER MY SUPERVISION AND THAT THE SAME ARE TRUE AND CORRECT TO THE BEST OF MY KNOWLEDGE AND BELIEF.

REGISTERED LAND SURVEYOR
REGISTRATION NO. 17492
STATE OF COLORADO

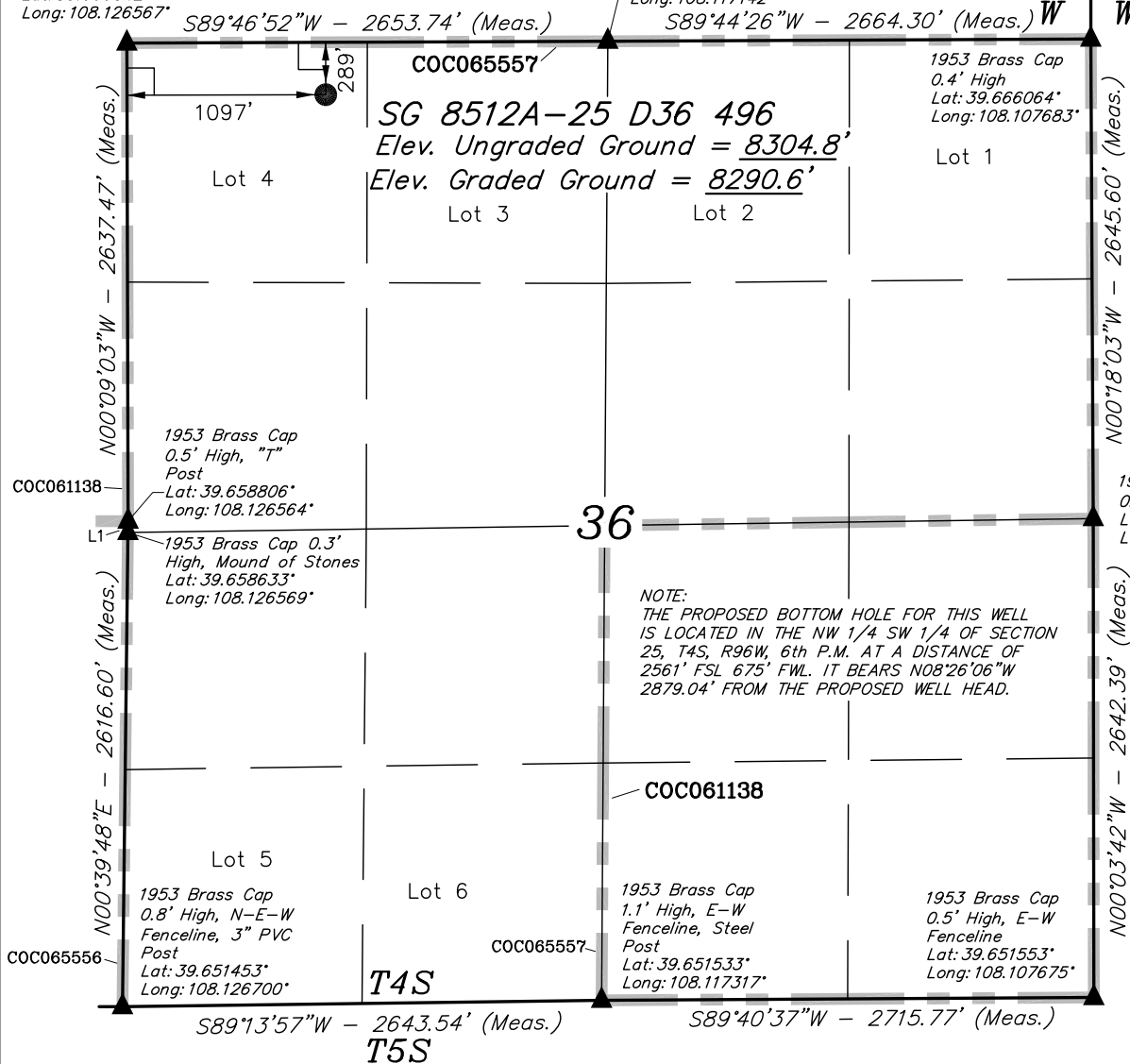
Revised: 05-18-11 D.R.B.

UINTAH ENGINEERING & LAND SURVEYING

85 SOUTH 200 EAST - VERNAL, UTAH 84078

(435) 789-1017

SCALE 1" = 1000'	DATE SURVEYED: 08-01-09	DATE DRAWN: 07-26-10
PARTY D.K. B.H. D.R.B.	REFERENCES G.L.O. PLAT	FILE Encana OIL & GAS (USA) INC.
WEATHER COOL		



NOTE:
THE PROPOSED BOTTOM HOLE FOR THIS WELL
IS LOCATED IN THE NW 1/4 SW 1/4 OF SECTION
25, T4S, R96W, 6th P.M. AT A DISTANCE OF
2561' FSL 675' FWL. IT BEARS N08°26'06"W
2879.04' FROM THE PROPOSED WELL HEAD.

LEGEND:

— = 90° SYMBOL

● = PROPOSED WELL HEAD.

▲ = SECTION CORNERS LOCATED.

SEE SHEET 7A FOR EXISTING
IMPROVEMENT WITHIN 400' OF THE
PROPOSED WELL DISTURBANCE

LINE TABLE		
LINE	BEARING	LENGTH
L1	S00°52'27"W	62.59'

PDOP = 1.4

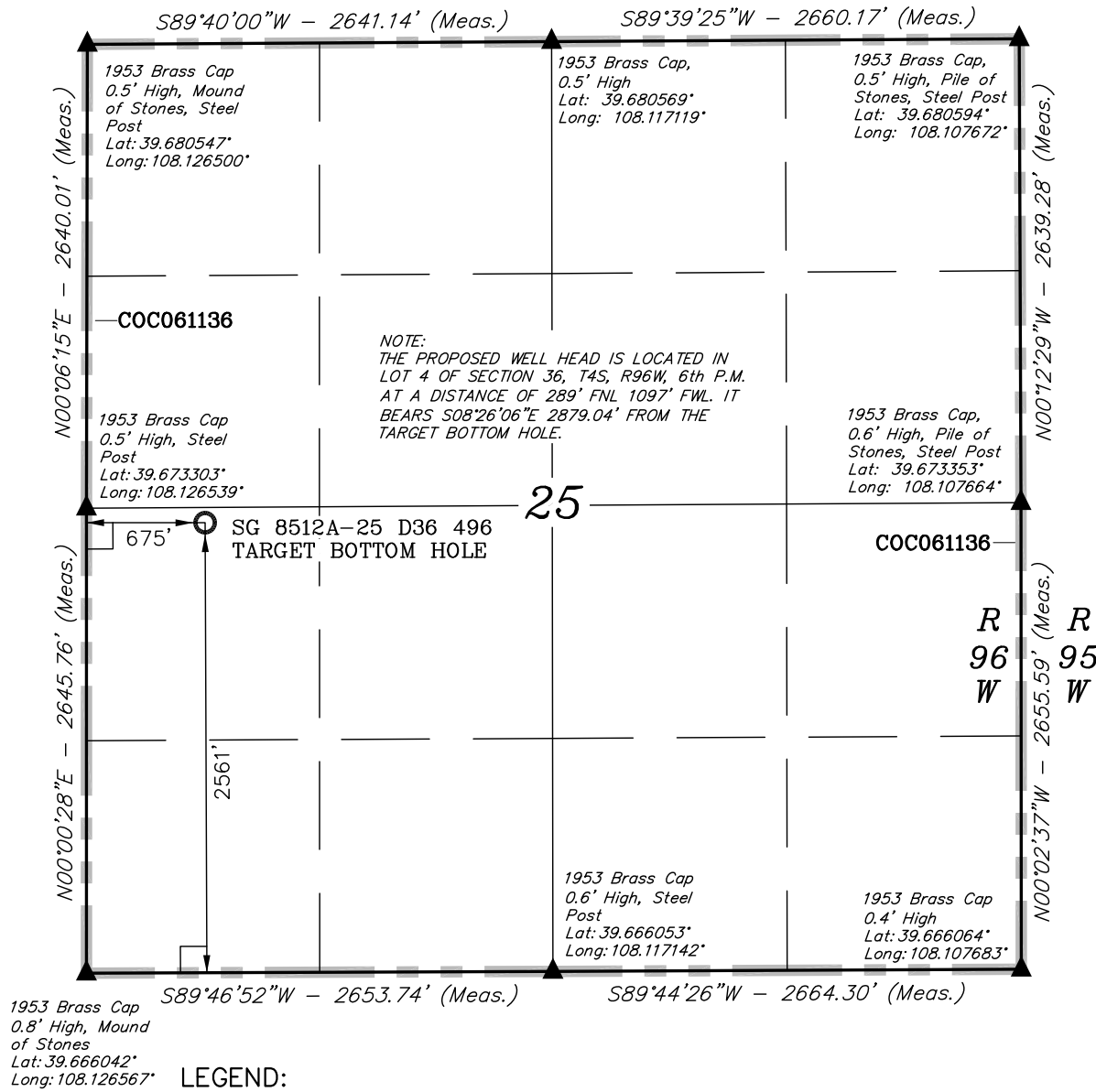
NAD 83 (SURFACE LOCATION)

LATITUDE = 39°39'54.92" (39.665256)
LONGITUDE = 108°07'21.62" (108.122672)

NAD 27 (SURFACE LOCATION)

LATITUDE = 39°39'55.00" (39.665278)
LONGITUDE = 108°07'19.33" (108.122036)

T4S, R96W, 6th P.M.



Encana OIL & GAS (USA) INC.

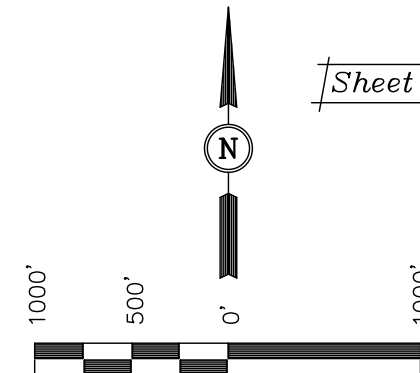
Well location, SG 8512A-25 D36 496 (TARGET BOTTOM HOLE), located as shown in the NW 1/4 SW 1/4 of Section 25, T4S, R96W, 6th P.M., Garfield County, Colorado.

BASIS OF ELEVATION

BENCH MARK (H79) LOCATED IN THE NE 1/4 OF SECTION 35, T4S, R98W, 6th P.M. TAKEN FROM THE BULL FORK QUADRANGLE, COLORADO, 7.5 MINUTE SERIES (TOPO GRAPHICAL MAP) PUBLISHED BY THE UNITED STATES DEPARTMENT OF THE INTERIOR, GEOLOGICAL SURVEY. SAID ELEVATION IS MARKED AS BEING 8535 FEET.

BASIS OF BEARINGS

BASIS OF BEARINGS IS A G.P.S. OBSERVATION.



Sheet 1vv of 11

CERTIFICATE

THIS IS TO CERTIFY THAT THE ABOVE PLAT WAS PREPARED FROM FIELD NOTES OF ACTUAL SURVEYS MADE BY ME OR UNDER MY SUPERVISION AND THAT THE SAME ARE TRUE AND CORRECT TO THE BEST OF MY KNOWLEDGE AND BELIEF.

REGISTERED LAND SURVEYOR
REGISTRATION NO. 17492
STATE OF COLORADO

Revised: 05-18-11 D.R.B.

UINTAH ENGINEERING & LAND SURVEYING
85 SOUTH 200 EAST - VERNAL, UTAH 84078
 (435) 789-1017

SCALE 1" = 1000'	DATE SURVEYED: 08-01-09	DATE DRAWN: 07-26-10
PARTY D.K. B.H. D.R.B.	REFERENCES G.L.O. PLAT	
WEATHER COOL	FILE Encana OIL & GAS (USA) INC.	

NAD 83 (TARGET BOTTOM HOLE)
LATITUDE = 39°40'23.06" (39.673072)
LONGITUDE = 108°07'26.92" (108.124144)
NAD 27 (TARGET BOTTOM HOLE)
LATITUDE = 39°40'23.15" (39.673097)
LONGITUDE = 108°07'24.63" (108.123508)