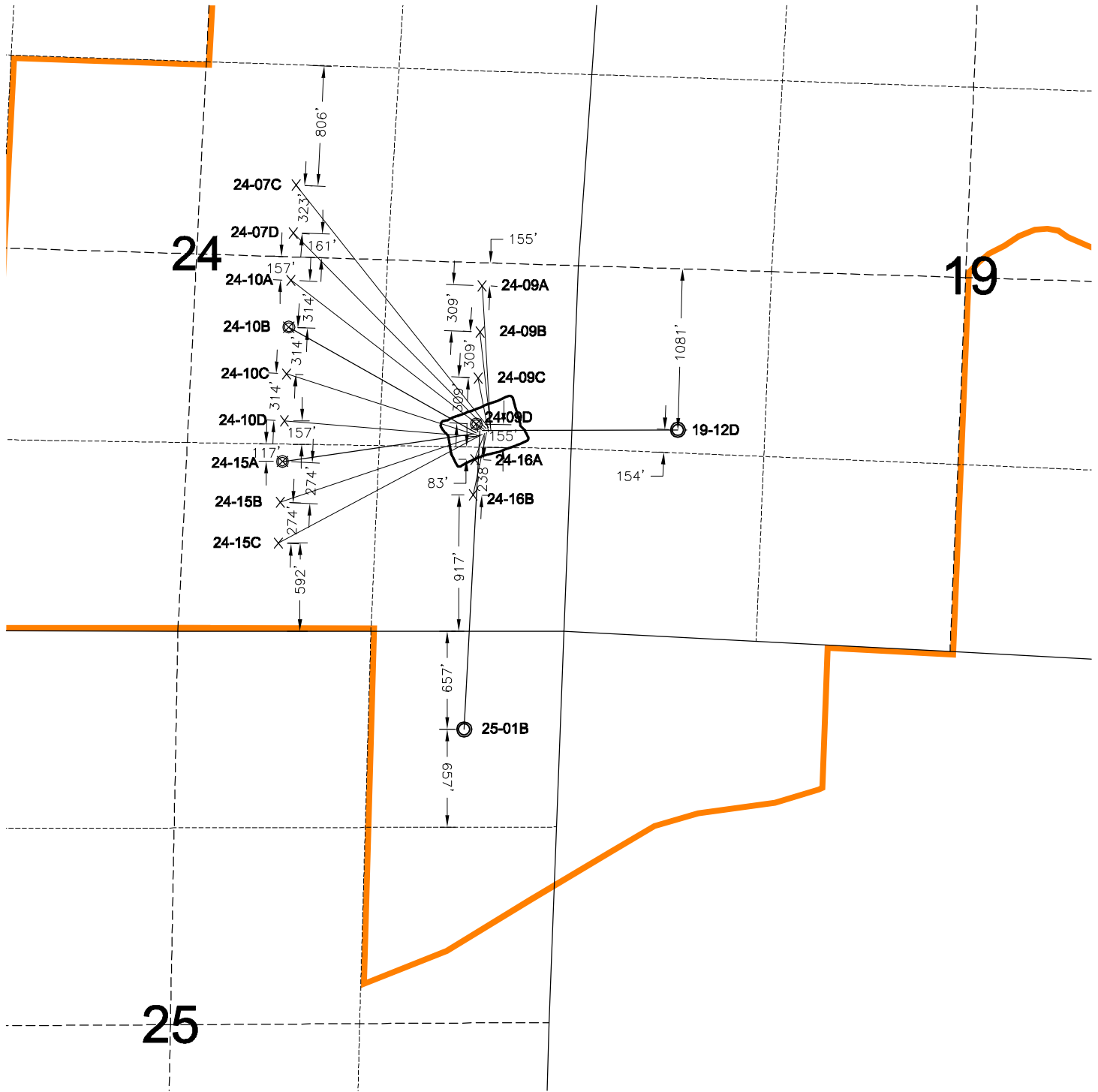


MULTI-WELL PLAN



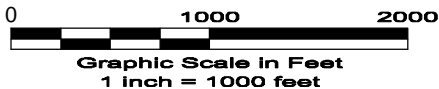
LARAMIE ENERGY II LEASE BOUNDARY

○ PROPOSED BOTTOM HOLE LOCATION

⊗ DRILLED BOTTOM HOLE LOCATION

x PROPOSED FUTURE BOTTOM HOLE LOCATION
PENDING 10-ACRE DOWNSPACING

6/21/11



LAND SURVEYING AND MAPPING
LAFAYETTE - WINTER PARK
Ph 303 666 0379 Fx 303 665 6320

LARAMIE ENERGY II LLC
HAWXHURST 24-09 PAD

NE1/4 SE1/4 SEC. 24 T9S R95W
6th PM MESA COUNTY COLORADO