

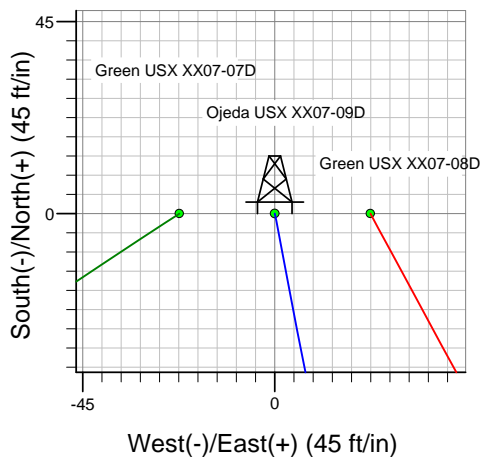
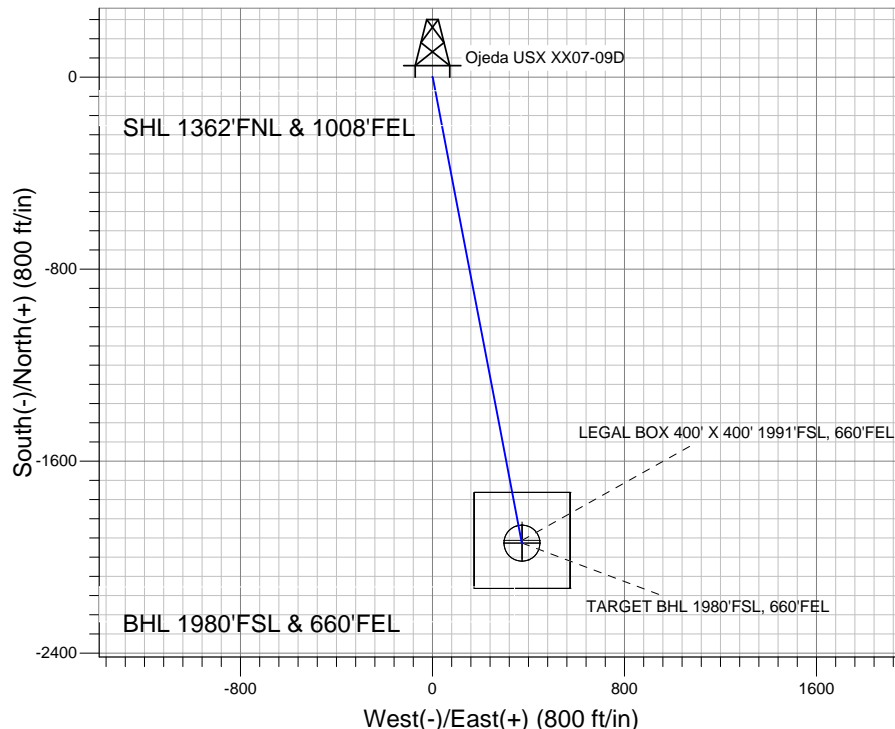
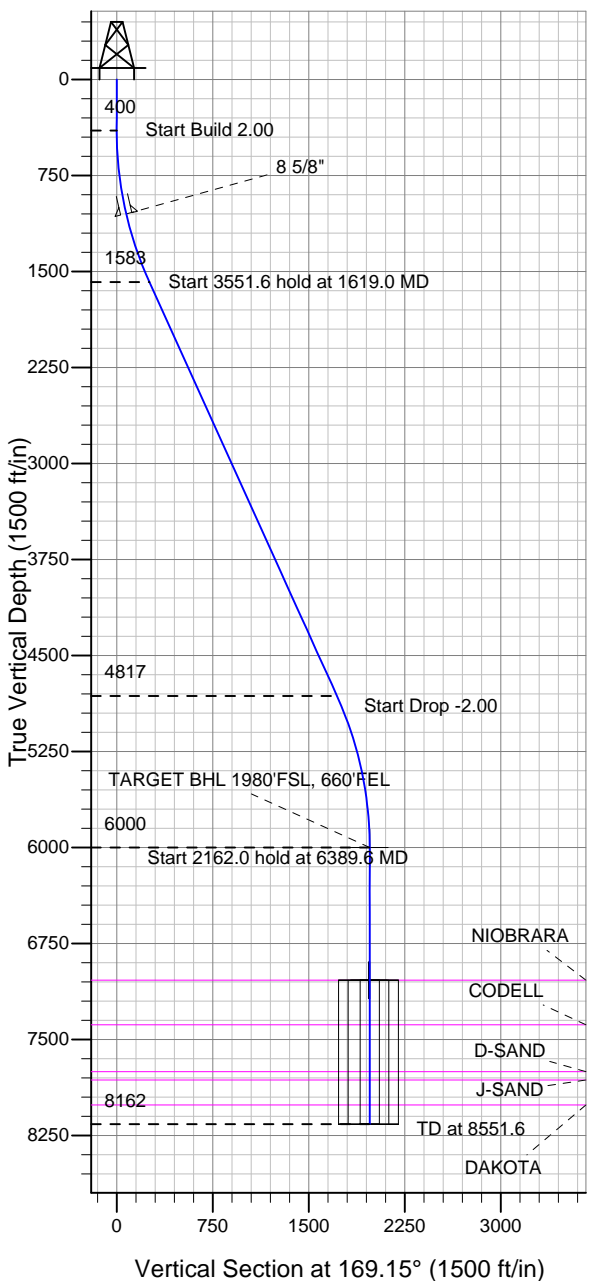
### Well Name: Ojeda USX XX07-09D

Surface Location: Green USX XX07-07D Pad Sec.7-T1N-R65W  
 North American Datum 1983 US State Plane 1983 Colorado Northern Zone

Ground Elevation: 4987.0

+N/-S +E/-W Northing Easting Latitude Longitude Slot  
 0.0 0.0 1269175.40 3223653.52 40.069510 -104.700850  
 Original Well Elev WELL @ 5000.0ft (Original Well Elev)

### NOBLE ENERGY INC WELD COUNTY CO



Green USX XX07-07D Pad Sec.7-T1N-R65W  
 Ojeda USX XX07-09D  
 Noble Ojeda USX XX07-09D Plan #1 (6-20-11)  
 12:11, June 21 2011



Azimuths to True North  
 Magnetic North: 8.80°

Magnetic Field  
 Strength: 52961.6snT  
 Dip Angle: 66.79°  
 Date: 6/20/2011  
 Model: IGRF2010

### WELLBORE TARGET DETAILS (LAT/LONG)

Name	TVD	+N/-S	+E/-W	Latitude	Longitude	Shape
TARGET BHL 1980'FSL, 660'FEL	6000.0	-1941.7	372.3	40.064180	-104.699520	Point
LEGAL BOX 400' X 400' 1991'FSL, 660'FEL	7037.0	-1930.7	372.3	40.064210	-104.699520	Rectangle (Sides: L400.0 W400.0)
TARGET CIRCLE 1980'FSL, 660'FEL	7037.0	-1941.7	372.3	40.064180	-104.699520	Circle (Radius: 75.0)

### SECTION DETAILS

Sec	MD	Inc	Azi	TVD	+N/-S	+E/-W	DLeg	TFace	VSec	Target
1	0.0	0.00	0.00	0.0	0.0	0.0	0.00	0.00	0.0	
2	400.0	0.00	0.00	400.0	0.0	0.0	0.00	0.00	0.0	
3	1619.0	24.38	169.15	1582.6	-250.9	48.1	2.00	169.15	255.5	
4	5170.6	24.38	169.15	4817.4	-1690.8	324.2	0.00	0.00	1721.6	
5	6389.6	0.00	0.00	6000.0	-1941.7	372.3	2.00	180.00	1977.0	TARGET BHL 1980'FSL, 660'FEL
6	8551.6	0.00	0.00	8162.0	-1941.7	372.3	0.00	0.00	1977.0	



## **Directional**

# **NOBLE ENERGY INC WELD COUNTY CO**

**SEC.7-T1N-R65W**

**Green USX XX07-07D Pad Sec.7-T1N-R65W**

**Ojeda USX XX07-09D**

**Wellbore #1**

**Plan: Noble Ojeda USX XX07-09D Plan #1 (6-20-11)**

## **Standard Planning Report**

**21 June, 2011**



<b>Database:</b>	Landmark	<b>Local Co-ordinate Reference:</b>	Well Ojeda USX XX07-09D
<b>Company:</b>	NOBLE ENERGY INC WELD COUNTY CO	<b>TVD Reference:</b>	WELL @ 5000.0ft (Original Well Elev)
<b>Project:</b>	SEC.7-T1N-R65W	<b>MD Reference:</b>	WELL @ 5000.0ft (Original Well Elev)
<b>Site:</b>	Green USX XX07-07D Pad Sec.7-T1N-R65W	<b>North Reference:</b>	True
<b>Well:</b>	Ojeda USX XX07-09D	<b>Survey Calculation Method:</b>	Minimum Curvature
<b>Wellbore:</b>	Wellbore #1		
<b>Design:</b>	Noble Ojeda USX XX07-09D Plan #1 (6-20-11)		

<b>Project</b>	SEC.7-T1N-R65W, Weld County, Colorado		
<b>Map System:</b>	US State Plane 1983	<b>System Datum:</b>	Mean Sea Level
<b>Geo Datum:</b>	North American Datum 1983		Using Well Reference Point
<b>Map Zone:</b>	Colorado Northern Zone		Using geodetic scale factor

Site						Green USX XX07-07D Pad Sec.7-T1N-R65W											
Site Position:						Northing:			1,269,175.20ft			Latitude:			40.069510		
From:			Lat/Long			Easting:			3,223,631.13ft			Longitude:			-104.700930		
Position Uncertainty:			0.0 ft			Slot Radius:			"			Grid Convergence:			0.52 °		

Well	Ojeda USX XX07-09D					
Well Position	+N/-S	0.0 ft	Northing:	1,269,175.40 ft	Latitude:	40.069510
	+E/-W	22.4 ft	Easting:	3,223,653.52 ft	Longitude:	-104.700850
Position Uncertainty		0.0 ft	Wellhead Elevation:	ft	Ground Level:	4,987.0 ft

<b>Wellbore</b>	Wellbore #1				
<b>Magnetics</b>	<b>Model Name</b>	<b>Sample Date</b>	<b>Declination (°)</b>	<b>Dip Angle (°)</b>	<b>Field Strength (nT)</b>
	IGRF2010	6/20/2011	8.80	66.79	52,962

<b>Design</b>	Noble Ojeda USX XX07-09D Plan #1 (6-20-11)			
<b>Audit Notes:</b>				
<b>Version:</b>	<b>Phase:</b>	PROTOTYPE	<b>Tie On Depth:</b>	0.0
<b>Vertical Section:</b>	<b>Depth From (TVD) (ft)</b>	<b>+N/-S (ft)</b>	<b>+E/-W (ft)</b>	<b>Direction (°)</b>
	0.0	0.0	0.0	169.15

<b>Plan Sections</b>										
Measured Depth (ft)	Inclination (°)	Azimuth (°)	Vertical Depth (ft)	+N/-S (ft)	+E/-W (ft)	Dogleg Rate (°/100ft)	Build Rate (°/100ft)	Turn Rate (°/100ft)	TFO (°)	Target
0.0	0.00	0.00	0.0	0.0	0.0	0.00	0.00	0.00	0.00	
400.0	0.00	0.00	400.0	0.0	0.0	0.00	0.00	0.00	0.00	
1,619.0	24.38	169.15	1,582.6	-250.9	48.1	2.00	2.00	0.00	169.15	
5,170.6	24.38	169.15	4,817.4	-1,690.8	324.2	0.00	0.00	0.00	0.00	
6,389.6	0.00	0.00	6,000.0	-1,941.7	372.3	2.00	-2.00	0.00	180.00	TARGET BHL 198C
8,551.6	0.00	0.00	8,162.0	-1,941.7	372.3	0.00	0.00	0.00	0.00	

<b>Database:</b>	Landmark	<b>Local Co-ordinate Reference:</b>	Well Ojeda USX XX07-09D
<b>Company:</b>	NOBLE ENERGY INC WELD COUNTY CO	<b>TVD Reference:</b>	WELL @ 5000.0ft (Original Well Elev)
<b>Project:</b>	SEC.7-T1N-R65W	<b>MD Reference:</b>	WELL @ 5000.0ft (Original Well Elev)
<b>Site:</b>	Green USX XX07-07D Pad Sec.7-T1N-R65W	<b>North Reference:</b>	True
<b>Well:</b>	Ojeda USX XX07-09D	<b>Survey Calculation Method:</b>	Minimum Curvature
<b>Wellbore:</b>	Wellbore #1		
<b>Design:</b>	Noble Ojeda USX XX07-09D Plan #1 (6-20-11)		

Planned Survey									
Measured Depth (ft)	Inclination (°)	Azimuth (°)	Vertical Depth (ft)	+N/-S (ft)	+E/-W (ft)	Vertical Section (ft)	Dogleg Rate (°/100ft)	Build Rate (°/100ft)	Turn Rate (°/100ft)
0.0	0.00	0.00	0.0	0.0	0.0	0.0	0.00	0.00	0.00
40.0	0.00	0.00	40.0	0.0	0.0	0.0	0.00	0.00	0.00
80.0	0.00	0.00	80.0	0.0	0.0	0.0	0.00	0.00	0.00
120.0	0.00	0.00	120.0	0.0	0.0	0.0	0.00	0.00	0.00
160.0	0.00	0.00	160.0	0.0	0.0	0.0	0.00	0.00	0.00
200.0	0.00	0.00	200.0	0.0	0.0	0.0	0.00	0.00	0.00
240.0	0.00	0.00	240.0	0.0	0.0	0.0	0.00	0.00	0.00
280.0	0.00	0.00	280.0	0.0	0.0	0.0	0.00	0.00	0.00
320.0	0.00	0.00	320.0	0.0	0.0	0.0	0.00	0.00	0.00
360.0	0.00	0.00	360.0	0.0	0.0	0.0	0.00	0.00	0.00
400.0	0.00	0.00	400.0	0.0	0.0	0.0	0.00	0.00	0.00
440.0	0.80	169.15	440.0	-0.3	0.1	0.3	2.00	2.00	0.00
480.0	1.60	169.15	480.0	-1.1	0.2	1.1	2.00	2.00	0.00
520.0	2.40	169.15	520.0	-2.5	0.5	2.5	2.00	2.00	0.00
560.0	3.20	169.15	559.9	-4.4	0.8	4.5	2.00	2.00	0.00
600.0	4.00	169.15	599.8	-6.9	1.3	7.0	2.00	2.00	0.00
640.0	4.80	169.15	639.7	-9.9	1.9	10.0	2.00	2.00	0.00
680.0	5.60	169.15	679.6	-13.4	2.6	13.7	2.00	2.00	0.00
720.0	6.40	169.15	719.3	-17.5	3.4	17.9	2.00	2.00	0.00
760.0	7.20	169.15	759.1	-22.2	4.3	22.6	2.00	2.00	0.00
800.0	8.00	169.15	798.7	-27.4	5.2	27.9	2.00	2.00	0.00
840.0	8.80	169.15	838.3	-33.1	6.3	33.7	2.00	2.00	0.00
880.0	9.60	169.15	877.8	-39.4	7.6	40.1	2.00	2.00	0.00
920.0	10.40	169.15	917.1	-46.2	8.9	47.1	2.00	2.00	0.00
960.0	11.20	169.15	956.4	-53.6	10.3	54.6	2.00	2.00	0.00
1,000.0	12.00	169.15	995.6	-61.5	11.8	62.6	2.00	2.00	0.00
1,040.0	12.80	169.15	1,034.7	-69.9	13.4	71.2	2.00	2.00	0.00
1,055.7	13.11	169.15	1,050.0	-73.4	14.1	74.7	2.00	2.00	0.00
8 5/8"									
1,080.0	13.60	169.15	1,073.6	-78.9	15.1	80.3	2.00	2.00	0.00
1,120.0	14.40	169.15	1,112.4	-88.4	16.9	90.0	2.00	2.00	0.00
1,160.0	15.20	169.15	1,151.1	-98.4	18.9	100.2	2.00	2.00	0.00
1,200.0	16.00	169.15	1,189.6	-109.0	20.9	111.0	2.00	2.00	0.00
1,240.0	16.80	169.15	1,228.0	-120.1	23.0	122.3	2.00	2.00	0.00
1,280.0	17.60	169.15	1,266.2	-131.7	25.3	134.1	2.00	2.00	0.00
1,320.0	18.40	169.15	1,304.3	-143.8	27.6	146.5	2.00	2.00	0.00
1,360.0	19.20	169.15	1,342.1	-156.5	30.0	159.3	2.00	2.00	0.00
1,400.0	20.00	169.15	1,379.8	-169.7	32.5	172.8	2.00	2.00	0.00
1,440.0	20.80	169.15	1,417.3	-183.4	35.2	186.7	2.00	2.00	0.00
1,480.0	21.60	169.15	1,454.6	-197.6	37.9	201.2	2.00	2.00	0.00
1,520.0	22.40	169.15	1,491.7	-212.3	40.7	216.2	2.00	2.00	0.00
1,560.0	23.20	169.15	1,528.6	-227.5	43.6	231.7	2.00	2.00	0.00
1,600.0	24.00	169.15	1,565.2	-243.2	46.6	247.7	2.00	2.00	0.00
1,619.0	24.38	169.15	1,582.6	-250.9	48.1	255.5	2.00	2.00	0.00
1,640.0	24.38	169.15	1,601.7	-259.4	49.7	264.1	0.00	0.00	0.00
1,680.0	24.38	169.15	1,638.1	-275.6	52.8	280.6	0.00	0.00	0.00
1,720.0	24.38	169.15	1,674.5	-291.8	56.0	297.2	0.00	0.00	0.00
1,760.0	24.38	169.15	1,711.0	-308.1	59.1	313.7	0.00	0.00	0.00
1,800.0	24.38	169.15	1,747.4	-324.3	62.2	330.2	0.00	0.00	0.00
1,840.0	24.38	169.15	1,783.8	-340.5	65.3	346.7	0.00	0.00	0.00
1,880.0	24.38	169.15	1,820.3	-356.7	68.4	363.2	0.00	0.00	0.00
1,920.0	24.38	169.15	1,856.7	-372.9	71.5	379.7	0.00	0.00	0.00
1,960.0	24.38	169.15	1,893.1	-389.1	74.6	396.2	0.00	0.00	0.00
2,000.0	24.38	169.15	1,929.6	-405.4	77.7	412.7	0.00	0.00	0.00

<b>Database:</b>	Landmark	<b>Local Co-ordinate Reference:</b>	Well Ojeda USX XX07-09D
<b>Company:</b>	NOBLE ENERGY INC WELD COUNTY CO	<b>TVD Reference:</b>	WELL @ 5000.0ft (Original Well Elev)
<b>Project:</b>	SEC.7-T1N-R65W	<b>MD Reference:</b>	WELL @ 5000.0ft (Original Well Elev)
<b>Site:</b>	Green USX XX07-07D Pad Sec.7-T1N-R65W	<b>North Reference:</b>	True
<b>Well:</b>	Ojeda USX XX07-09D	<b>Survey Calculation Method:</b>	Minimum Curvature
<b>Wellbore:</b>	Wellbore #1		
<b>Design:</b>	Noble Ojeda USX XX07-09D Plan #1 (6-20-11)		

Planned Survey									
Measured Depth (ft)	Inclination (°)	Azimuth (°)	Vertical Depth (ft)	+N/-S (ft)	+E/-W (ft)	Vertical Section (ft)	Dogleg Rate (°/100ft)	Build Rate (°/100ft)	Turn Rate (°/100ft)
2,040.0	24.38	169.15	1,966.0	-421.6	80.8	429.2	0.00	0.00	0.00
2,080.0	24.38	169.15	2,002.4	-437.8	83.9	445.8	0.00	0.00	0.00
2,120.0	24.38	169.15	2,038.9	-454.0	87.0	462.3	0.00	0.00	0.00
2,160.0	24.38	169.15	2,075.3	-470.2	90.2	478.8	0.00	0.00	0.00
2,200.0	24.38	169.15	2,111.7	-486.4	93.3	495.3	0.00	0.00	0.00
2,240.0	24.38	169.15	2,148.2	-502.7	96.4	511.8	0.00	0.00	0.00
2,280.0	24.38	169.15	2,184.6	-518.9	99.5	528.3	0.00	0.00	0.00
2,320.0	24.38	169.15	2,221.0	-535.1	102.6	544.8	0.00	0.00	0.00
2,360.0	24.38	169.15	2,257.5	-551.3	105.7	561.3	0.00	0.00	0.00
2,400.0	24.38	169.15	2,293.9	-567.5	108.8	577.9	0.00	0.00	0.00
2,440.0	24.38	169.15	2,330.3	-583.7	111.9	594.4	0.00	0.00	0.00
2,480.0	24.38	169.15	2,366.8	-600.0	115.0	610.9	0.00	0.00	0.00
2,520.0	24.38	169.15	2,403.2	-616.2	118.1	627.4	0.00	0.00	0.00
2,560.0	24.38	169.15	2,439.6	-632.4	121.2	643.9	0.00	0.00	0.00
2,600.0	24.38	169.15	2,476.1	-648.6	124.4	660.4	0.00	0.00	0.00
2,640.0	24.38	169.15	2,512.5	-664.8	127.5	676.9	0.00	0.00	0.00
2,680.0	24.38	169.15	2,548.9	-681.0	130.6	693.4	0.00	0.00	0.00
2,720.0	24.38	169.15	2,585.4	-697.3	133.7	709.9	0.00	0.00	0.00
2,760.0	24.38	169.15	2,621.8	-713.5	136.8	726.5	0.00	0.00	0.00
2,800.0	24.38	169.15	2,658.2	-729.7	139.9	743.0	0.00	0.00	0.00
2,840.0	24.38	169.15	2,694.7	-745.9	143.0	759.5	0.00	0.00	0.00
2,880.0	24.38	169.15	2,731.1	-762.1	146.1	776.0	0.00	0.00	0.00
2,920.0	24.38	169.15	2,767.5	-778.3	149.2	792.5	0.00	0.00	0.00
2,960.0	24.38	169.15	2,804.0	-794.5	152.3	809.0	0.00	0.00	0.00
3,000.0	24.38	169.15	2,840.4	-810.8	155.4	825.5	0.00	0.00	0.00
3,040.0	24.38	169.15	2,876.8	-827.0	158.6	842.0	0.00	0.00	0.00
3,080.0	24.38	169.15	2,913.3	-843.2	161.7	858.6	0.00	0.00	0.00
3,120.0	24.38	169.15	2,949.7	-859.4	164.8	875.1	0.00	0.00	0.00
3,160.0	24.38	169.15	2,986.1	-875.6	167.9	891.6	0.00	0.00	0.00
3,200.0	24.38	169.15	3,022.6	-891.8	171.0	908.1	0.00	0.00	0.00
3,240.0	24.38	169.15	3,059.0	-908.1	174.1	924.6	0.00	0.00	0.00
3,280.0	24.38	169.15	3,095.4	-924.3	177.2	941.1	0.00	0.00	0.00
3,320.0	24.38	169.15	3,131.9	-940.5	180.3	957.6	0.00	0.00	0.00
3,360.0	24.38	169.15	3,168.3	-956.7	183.4	974.1	0.00	0.00	0.00
3,400.0	24.38	169.15	3,204.7	-972.9	186.5	990.7	0.00	0.00	0.00
3,440.0	24.38	169.15	3,241.2	-989.1	189.6	1,007.2	0.00	0.00	0.00
3,480.0	24.38	169.15	3,277.6	-1,005.4	192.8	1,023.7	0.00	0.00	0.00
3,520.0	24.38	169.15	3,314.0	-1,021.6	195.9	1,040.2	0.00	0.00	0.00
3,560.0	24.38	169.15	3,350.5	-1,037.8	199.0	1,056.7	0.00	0.00	0.00
3,600.0	24.38	169.15	3,386.9	-1,054.0	202.1	1,073.2	0.00	0.00	0.00
3,640.0	24.38	169.15	3,423.3	-1,070.2	205.2	1,089.7	0.00	0.00	0.00
3,680.0	24.38	169.15	3,459.8	-1,086.4	208.3	1,106.2	0.00	0.00	0.00
3,720.0	24.38	169.15	3,496.2	-1,102.7	211.4	1,122.7	0.00	0.00	0.00
3,760.0	24.38	169.15	3,532.6	-1,118.9	214.5	1,139.3	0.00	0.00	0.00
3,800.0	24.38	169.15	3,569.1	-1,135.1	217.6	1,155.8	0.00	0.00	0.00
3,840.0	24.38	169.15	3,605.5	-1,151.3	220.7	1,172.3	0.00	0.00	0.00
3,880.0	24.38	169.15	3,641.9	-1,167.5	223.8	1,188.8	0.00	0.00	0.00
3,920.0	24.38	169.15	3,678.3	-1,183.7	227.0	1,205.3	0.00	0.00	0.00
3,960.0	24.38	169.15	3,714.8	-1,200.0	230.1	1,221.8	0.00	0.00	0.00
4,000.0	24.38	169.15	3,751.2	-1,216.2	233.2	1,238.3	0.00	0.00	0.00
4,040.0	24.38	169.15	3,787.6	-1,232.4	236.3	1,254.8	0.00	0.00	0.00
4,080.0	24.38	169.15	3,824.1	-1,248.6	239.4	1,271.4	0.00	0.00	0.00
4,120.0	24.38	169.15	3,860.5	-1,264.8	242.5	1,287.9	0.00	0.00	0.00
4,160.0	24.38	169.15	3,896.9	-1,281.0	245.6	1,304.4	0.00	0.00	0.00

<b>Database:</b>	Landmark	<b>Local Co-ordinate Reference:</b>	Well Ojeda USX XX07-09D
<b>Company:</b>	NOBLE ENERGY INC WELD COUNTY CO	<b>TVD Reference:</b>	WELL @ 5000.0ft (Original Well Elev)
<b>Project:</b>	SEC.7-T1N-R65W	<b>MD Reference:</b>	WELL @ 5000.0ft (Original Well Elev)
<b>Site:</b>	Green USX XX07-07D Pad Sec.7-T1N-R65W	<b>North Reference:</b>	True
<b>Well:</b>	Ojeda USX XX07-09D	<b>Survey Calculation Method:</b>	Minimum Curvature
<b>Wellbore:</b>	Wellbore #1		
<b>Design:</b>	Noble Ojeda USX XX07-09D Plan #1 (6-20-11)		

Planned Survey									
Measured Depth (ft)	Inclination (°)	Azimuth (°)	Vertical Depth (ft)	+N/-S (ft)	+E/-W (ft)	Vertical Section (ft)	Dogleg Rate (°/100ft)	Build Rate (°/100ft)	Turn Rate (°/100ft)
4,200.0	24.38	169.15	3,933.4	-1,297.3	248.7	1,320.9	0.00	0.00	0.00
4,240.0	24.38	169.15	3,969.8	-1,313.5	251.8	1,337.4	0.00	0.00	0.00
4,280.0	24.38	169.15	4,006.2	-1,329.7	254.9	1,353.9	0.00	0.00	0.00
4,320.0	24.38	169.15	4,042.7	-1,345.9	258.0	1,370.4	0.00	0.00	0.00
4,360.0	24.38	169.15	4,079.1	-1,362.1	261.2	1,386.9	0.00	0.00	0.00
4,400.0	24.38	169.15	4,115.5	-1,378.3	264.3	1,403.5	0.00	0.00	0.00
4,440.0	24.38	169.15	4,152.0	-1,394.6	267.4	1,420.0	0.00	0.00	0.00
4,480.0	24.38	169.15	4,188.4	-1,410.8	270.5	1,436.5	0.00	0.00	0.00
4,520.0	24.38	169.15	4,224.8	-1,427.0	273.6	1,453.0	0.00	0.00	0.00
4,560.0	24.38	169.15	4,261.3	-1,443.2	276.7	1,469.5	0.00	0.00	0.00
4,600.0	24.38	169.15	4,297.7	-1,459.4	279.8	1,486.0	0.00	0.00	0.00
4,640.0	24.38	169.15	4,334.1	-1,475.6	282.9	1,502.5	0.00	0.00	0.00
4,680.0	24.38	169.15	4,370.6	-1,491.9	286.0	1,519.0	0.00	0.00	0.00
4,720.0	24.38	169.15	4,407.0	-1,508.1	289.1	1,535.5	0.00	0.00	0.00
4,760.0	24.38	169.15	4,443.4	-1,524.3	292.2	1,552.1	0.00	0.00	0.00
4,800.0	24.38	169.15	4,479.9	-1,540.5	295.4	1,568.6	0.00	0.00	0.00
4,840.0	24.38	169.15	4,516.3	-1,556.7	298.5	1,585.1	0.00	0.00	0.00
4,880.0	24.38	169.15	4,552.7	-1,572.9	301.6	1,601.6	0.00	0.00	0.00
4,920.0	24.38	169.15	4,589.2	-1,589.2	304.7	1,618.1	0.00	0.00	0.00
4,960.0	24.38	169.15	4,625.6	-1,605.4	307.8	1,634.6	0.00	0.00	0.00
5,000.0	24.38	169.15	4,662.0	-1,621.6	310.9	1,651.1	0.00	0.00	0.00
5,040.0	24.38	169.15	4,698.5	-1,637.8	314.0	1,667.6	0.00	0.00	0.00
5,080.0	24.38	169.15	4,734.9	-1,654.0	317.1	1,684.2	0.00	0.00	0.00
5,120.0	24.38	169.15	4,771.3	-1,670.2	320.2	1,700.7	0.00	0.00	0.00
5,160.0	24.38	169.15	4,807.8	-1,686.5	323.3	1,717.2	0.00	0.00	0.00
5,170.6	24.38	169.15	4,817.4	-1,690.8	324.2	1,721.6	0.00	0.00	0.00
5,200.0	23.79	169.15	4,844.3	-1,702.5	326.4	1,733.6	2.00	-2.00	0.00
5,240.0	22.99	169.15	4,881.0	-1,718.1	329.4	1,749.4	2.00	-2.00	0.00
5,280.0	22.19	169.15	4,917.9	-1,733.2	332.3	1,764.8	2.00	-2.00	0.00
5,320.0	21.39	169.15	4,955.0	-1,747.8	335.1	1,779.6	2.00	-2.00	0.00
5,360.0	20.59	169.15	4,992.4	-1,761.9	337.8	1,794.0	2.00	-2.00	0.00
5,400.0	19.79	169.15	5,029.9	-1,775.4	340.4	1,807.8	2.00	-2.00	0.00
5,440.0	18.99	169.15	5,067.7	-1,788.5	342.9	1,821.1	2.00	-2.00	0.00
5,480.0	18.19	169.15	5,105.6	-1,801.0	345.3	1,833.8	2.00	-2.00	0.00
5,520.0	17.39	169.15	5,143.7	-1,813.0	347.6	1,846.0	2.00	-2.00	0.00
5,560.0	16.59	169.15	5,181.9	-1,824.5	349.8	1,857.7	2.00	-2.00	0.00
5,600.0	15.79	169.15	5,220.3	-1,835.5	351.9	1,868.9	2.00	-2.00	0.00
5,640.0	14.99	169.15	5,258.9	-1,845.9	353.9	1,879.5	2.00	-2.00	0.00
5,680.0	14.19	169.15	5,297.6	-1,855.8	355.8	1,889.6	2.00	-2.00	0.00
5,720.0	13.39	169.15	5,336.4	-1,865.1	357.6	1,899.1	2.00	-2.00	0.00
5,760.0	12.59	169.15	5,375.4	-1,874.0	359.3	1,908.1	2.00	-2.00	0.00
5,800.0	11.79	169.15	5,414.5	-1,882.3	360.9	1,916.6	2.00	-2.00	0.00
5,840.0	10.99	169.15	5,453.7	-1,890.0	362.4	1,924.5	2.00	-2.00	0.00
5,880.0	10.19	169.15	5,493.1	-1,897.3	363.8	1,931.8	2.00	-2.00	0.00
5,920.0	9.39	169.15	5,532.5	-1,903.9	365.0	1,938.6	2.00	-2.00	0.00
5,960.0	8.59	169.15	5,572.0	-1,910.1	366.2	1,944.9	2.00	-2.00	0.00
6,000.0	7.79	169.15	5,611.6	-1,915.7	367.3	1,950.6	2.00	-2.00	0.00
6,040.0	6.99	169.15	5,651.2	-1,920.7	368.3	1,955.7	2.00	-2.00	0.00
6,080.0	6.19	169.15	5,691.0	-1,925.2	369.1	1,960.3	2.00	-2.00	0.00
6,120.0	5.39	169.15	5,730.8	-1,929.2	369.9	1,964.3	2.00	-2.00	0.00
6,160.0	4.59	169.15	5,770.6	-1,932.6	370.5	1,967.8	2.00	-2.00	0.00
6,200.0	3.79	169.15	5,810.5	-1,935.5	371.1	1,970.8	2.00	-2.00	0.00
6,240.0	2.99	169.15	5,850.4	-1,937.8	371.5	1,973.1	2.00	-2.00	0.00
6,280.0	2.19	169.15	5,890.4	-1,939.6	371.9	1,974.9	2.00	-2.00	0.00

<b>Database:</b>	Landmark	<b>Local Co-ordinate Reference:</b>	Well Ojeda USX XX07-09D
<b>Company:</b>	NOBLE ENERGY INC WELD COUNTY CO	<b>TVD Reference:</b>	WELL @ 5000.0ft (Original Well Elev)
<b>Project:</b>	SEC.7-T1N-R65W	<b>MD Reference:</b>	WELL @ 5000.0ft (Original Well Elev)
<b>Site:</b>	Green USX XX07-07D Pad Sec.7-T1N-R65W	<b>North Reference:</b>	True
<b>Well:</b>	Ojeda USX XX07-09D	<b>Survey Calculation Method:</b>	Minimum Curvature
<b>Wellbore:</b>	Wellbore #1		
<b>Design:</b>	Noble Ojeda USX XX07-09D Plan #1 (6-20-11)		

Planned Survey									
Measured Depth (ft)	Inclination (°)	Azimuth (°)	Vertical Depth (ft)	+N/-S (ft)	+E/-W (ft)	Vertical Section (ft)	Dogleg Rate (°/100ft)	Build Rate (°/100ft)	Turn Rate (°/100ft)
6,320.0	1.39	169.15	5,930.4	-1,940.8	372.1	1,976.2	2.00	-2.00	0.00
6,360.0	0.59	169.15	5,970.4	-1,941.5	372.2	1,976.9	2.00	-2.00	0.00
6,389.6	0.00	0.00	6,000.0	-1,941.7	372.3	1,977.0	2.00	-2.00	-570.81
<b>TARGET BHL 1980'FSL, 660'FEL</b>									
6,400.0	0.00	0.00	6,010.4	-1,941.7	372.3	1,977.0	0.00	0.00	0.00
6,440.0	0.00	0.00	6,050.4	-1,941.7	372.3	1,977.0	0.00	0.00	0.00
6,480.0	0.00	0.00	6,090.4	-1,941.7	372.3	1,977.0	0.00	0.00	0.00
6,520.0	0.00	0.00	6,130.4	-1,941.7	372.3	1,977.0	0.00	0.00	0.00
6,560.0	0.00	0.00	6,170.4	-1,941.7	372.3	1,977.0	0.00	0.00	0.00
6,600.0	0.00	0.00	6,210.4	-1,941.7	372.3	1,977.0	0.00	0.00	0.00
6,640.0	0.00	0.00	6,250.4	-1,941.7	372.3	1,977.0	0.00	0.00	0.00
6,680.0	0.00	0.00	6,290.4	-1,941.7	372.3	1,977.0	0.00	0.00	0.00
6,720.0	0.00	0.00	6,330.4	-1,941.7	372.3	1,977.0	0.00	0.00	0.00
6,760.0	0.00	0.00	6,370.4	-1,941.7	372.3	1,977.0	0.00	0.00	0.00
6,800.0	0.00	0.00	6,410.4	-1,941.7	372.3	1,977.0	0.00	0.00	0.00
6,840.0	0.00	0.00	6,450.4	-1,941.7	372.3	1,977.0	0.00	0.00	0.00
6,880.0	0.00	0.00	6,490.4	-1,941.7	372.3	1,977.0	0.00	0.00	0.00
6,920.0	0.00	0.00	6,530.4	-1,941.7	372.3	1,977.0	0.00	0.00	0.00
6,960.0	0.00	0.00	6,570.4	-1,941.7	372.3	1,977.0	0.00	0.00	0.00
7,000.0	0.00	0.00	6,610.4	-1,941.7	372.3	1,977.0	0.00	0.00	0.00
7,040.0	0.00	0.00	6,650.4	-1,941.7	372.3	1,977.0	0.00	0.00	0.00
7,080.0	0.00	0.00	6,690.4	-1,941.7	372.3	1,977.0	0.00	0.00	0.00
7,120.0	0.00	0.00	6,730.4	-1,941.7	372.3	1,977.0	0.00	0.00	0.00
7,160.0	0.00	0.00	6,770.4	-1,941.7	372.3	1,977.0	0.00	0.00	0.00
7,200.0	0.00	0.00	6,810.4	-1,941.7	372.3	1,977.0	0.00	0.00	0.00
7,240.0	0.00	0.00	6,850.4	-1,941.7	372.3	1,977.0	0.00	0.00	0.00
7,280.0	0.00	0.00	6,890.4	-1,941.7	372.3	1,977.0	0.00	0.00	0.00
7,320.0	0.00	0.00	6,930.4	-1,941.7	372.3	1,977.0	0.00	0.00	0.00
7,360.0	0.00	0.00	6,970.4	-1,941.7	372.3	1,977.0	0.00	0.00	0.00
7,400.0	0.00	0.00	7,010.4	-1,941.7	372.3	1,977.0	0.00	0.00	0.00
7,426.6	0.00	0.00	7,037.0	-1,941.7	372.3	1,977.0	0.00	0.00	0.00
<b>NIOBRARA - LEGAL BOX 400' X 400' 1991'FSL, 660'FEL - TARGET CIRCLE 1980'FSL, 660'FEL</b>									
7,440.0	0.00	0.00	7,050.4	-1,941.7	372.3	1,977.0	0.00	0.00	0.00
7,480.0	0.00	0.00	7,090.4	-1,941.7	372.3	1,977.0	0.00	0.00	0.00
7,520.0	0.00	0.00	7,130.4	-1,941.7	372.3	1,977.0	0.00	0.00	0.00
7,560.0	0.00	0.00	7,170.4	-1,941.7	372.3	1,977.0	0.00	0.00	0.00
7,600.0	0.00	0.00	7,210.4	-1,941.7	372.3	1,977.0	0.00	0.00	0.00
7,640.0	0.00	0.00	7,250.4	-1,941.7	372.3	1,977.0	0.00	0.00	0.00
7,680.0	0.00	0.00	7,290.4	-1,941.7	372.3	1,977.0	0.00	0.00	0.00
7,720.0	0.00	0.00	7,330.4	-1,941.7	372.3	1,977.0	0.00	0.00	0.00
7,760.0	0.00	0.00	7,370.4	-1,941.7	372.3	1,977.0	0.00	0.00	0.00
7,774.6	0.00	0.00	7,385.0	-1,941.7	372.3	1,977.0	0.00	0.00	0.00
<b>CODELL</b>									
7,800.0	0.00	0.00	7,410.4	-1,941.7	372.3	1,977.0	0.00	0.00	0.00
7,840.0	0.00	0.00	7,450.4	-1,941.7	372.3	1,977.0	0.00	0.00	0.00
7,880.0	0.00	0.00	7,490.4	-1,941.7	372.3	1,977.0	0.00	0.00	0.00
7,920.0	0.00	0.00	7,530.4	-1,941.7	372.3	1,977.0	0.00	0.00	0.00
7,960.0	0.00	0.00	7,570.4	-1,941.7	372.3	1,977.0	0.00	0.00	0.00
8,000.0	0.00	0.00	7,610.4	-1,941.7	372.3	1,977.0	0.00	0.00	0.00
8,040.0	0.00	0.00	7,650.4	-1,941.7	372.3	1,977.0	0.00	0.00	0.00
8,080.0	0.00	0.00	7,690.4	-1,941.7	372.3	1,977.0	0.00	0.00	0.00
8,120.0	0.00	0.00	7,730.4	-1,941.7	372.3	1,977.0	0.00	0.00	0.00
8,139.6	0.00	0.00	7,750.0	-1,941.7	372.3	1,977.0	0.00	0.00	0.00



<b>Database:</b>	Landmark	<b>Local Co-ordinate Reference:</b>	Well Ojeda USX XX07-09D
<b>Company:</b>	NOBLE ENERGY INC WELD COUNTY CO	<b>TVD Reference:</b>	WELL @ 5000.0ft (Original Well Elev)
<b>Project:</b>	SEC.7-T1N-R65W	<b>MD Reference:</b>	WELL @ 5000.0ft (Original Well Elev)
<b>Site:</b>	Green USX XX07-07D Pad Sec.7-T1N-R65W	<b>North Reference:</b>	True
<b>Well:</b>	Ojeda USX XX07-09D	<b>Survey Calculation Method:</b>	Minimum Curvature
<b>Wellbore:</b>	Wellbore #1		
<b>Design:</b>	Noble Ojeda USX XX07-09D Plan #1 (6-20-11)		

Planned Survey										
Measured Depth (ft)	Inclination (°)	Azimuth (°)	Vertical Depth (ft)	+N/-S (ft)	+E/-W (ft)	Vertical Section (ft)	Dogleg Rate (°/100ft)	Build Rate (°/100ft)	Turn Rate (°/100ft)	
<b>D-SAND</b>										
8,160.0	0.00	0.00	7,770.4	-1,941.7	372.3	1,977.0	0.00	0.00	0.00	
8,200.0	0.00	0.00	7,810.4	-1,941.7	372.3	1,977.0	0.00	0.00	0.00	
8,206.6	0.00	0.00	7,817.0	-1,941.7	372.3	1,977.0	0.00	0.00	0.00	
<b>J-SAND</b>										
8,240.0	0.00	0.00	7,850.4	-1,941.7	372.3	1,977.0	0.00	0.00	0.00	
8,280.0	0.00	0.00	7,890.4	-1,941.7	372.3	1,977.0	0.00	0.00	0.00	
8,320.0	0.00	0.00	7,930.4	-1,941.7	372.3	1,977.0	0.00	0.00	0.00	
8,360.0	0.00	0.00	7,970.4	-1,941.7	372.3	1,977.0	0.00	0.00	0.00	
8,400.0	0.00	0.00	8,010.4	-1,941.7	372.3	1,977.0	0.00	0.00	0.00	
8,401.6	0.00	0.00	8,012.0	-1,941.7	372.3	1,977.0	0.00	0.00	0.00	
<b>DAKOTA</b>										
8,440.0	0.00	0.00	8,050.4	-1,941.7	372.3	1,977.0	0.00	0.00	0.00	
8,480.0	0.00	0.00	8,090.4	-1,941.7	372.3	1,977.0	0.00	0.00	0.00	
8,520.0	0.00	0.00	8,130.4	-1,941.7	372.3	1,977.0	0.00	0.00	0.00	
8,551.6	0.00	0.00	8,162.0	-1,941.7	372.3	1,977.0	0.00	0.00	0.00	

Targets										
Target Name	- hit/miss target	Dip Angle (°)	Dip Dir. (°)	TVD (ft)	+N/-S (ft)	+E/-W (ft)	Northing (ft)	Easting (ft)	Latitude	Longitude
LEGAL BOX 400' X 400'	- plan misses target center by 11.0ft at 7426.6ft MD (7037.0 TVD, -1941.7 N, 372.3 E)	0.00	0.00	7,037.0	-1,930.7	372.3	1,267,248.21	3,224,043.19	40.064210	-104.699520
	- Rectangle (sides W400.0 H400.0 D1,125.0)									
TARGET BHL 1980'F:	- plan hits target center	0.00	0.00	6,000.0	-1,941.7	372.3	1,267,237.25	3,224,043.26	40.064180	-104.699520
	- Point									
TARGET CIRCLE 198'	- plan hits target center	0.00	0.00	7,037.0	-1,941.7	372.3	1,267,237.25	3,224,043.26	40.064180	-104.699520
	- Circle (radius 75.0)									

Casing Points						
Measured Depth (ft)	Vertical Depth (ft)	Name	Casing Diameter (")	Hole Diameter (")		
1,055.7	1,050.0	8 5/8"	8-5/8	12-1/4		

Formations						
Measured Depth (ft)	Vertical Depth (ft)	Name	Lithology	Dip (°)	Dip Direction (°)	
7,426.6	7,037.0	NIOBRARA		0.00		
7,774.6	7,385.0	CODELL		0.00		
8,139.6	7,750.0	D-SAND		0.00		
8,206.6	7,817.0	J-SAND		0.00		
8,401.6	8,012.0	DAKOTA		0.00		