

T4S, R96W, 6th P.M.

Encana OIL & GAS (USA) INC.

Well location, SG 8510F-25 D36 496 (SURFACE LOCATION), located as shown in Lot 4 of Section 36, T4S, R96W, 6th P.M., Garfield County, Colorado.

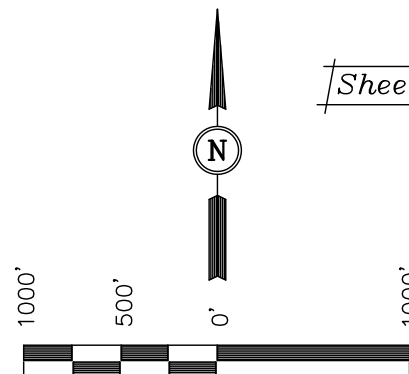
### BASIS OF ELEVATION

BENCH MARK (H79) LOCATED IN THE NE 1/4 OF SECTION 35, T4S, R98W, 6th P.M. TAKEN FROM THE BULL FORK QUADRANGLE, COLORADO, 7.5 MINUTE SERIES (TOPOGRAPHICAL MAP) PUBLISHED BY THE UNITED STATES DEPARTMENT OF THE INTERIOR, GEOLOGICAL SURVEY. SAID ELEVATION IS MARKED AS BEING 8535 FEET.

### BASIS OF BEARINGS

BASIS OF BEARINGS IS A G.P.S. OBSERVATION.

Sheet 1ee of 11



SCALE

### CERTIFICATE

THIS IS TO CERTIFY THAT THE ABOVE PLAT WAS PREPARED FROM FIELD NOTES OF ACTUAL SURVEYS MADE BY ME OR UNDER MY SUPERVISION AND THAT THE SAME ARE TRUE AND CORRECT TO THE BEST OF MY KNOWLEDGE AND BELIEF.

REGISTERED LAND SURVEYOR  
REGISTRATION NO. 17492  
STATE OF COLORADO

Revised: 05-18-11 D.R.B.

UINTAH ENGINEERING & LAND SURVEYING

85 SOUTH 200 EAST - VERNAL, UTAH 84078

(435) 789-1017

SCALE 1" = 1000'	DATE SURVEYED: 08-01-09	DATE DRAWN: 07-26-10
PARTY D.K. B.H. D.R.B.	REFERENCES G.L.O. PLAT	
WEATHER COOL	FILE Encana OIL & GAS (USA) INC.	

1953 Brass Cap  
0.8' High, Mound  
of Stones  
Lat: 39.666042°  
Long: 108.126567°

1953 Brass Cap  
0.6' High, Steel  
Post  
Lat: 39.666053°  
Long: 108.117142°

1953 Brass Cap  
0.4' High  
Lat: 39.666064°  
Long: 108.107683°

1953 Brass Cap  
0.4' High, "T" Post  
Lat: 39.658806°  
Long: 108.107661°

1953 Brass Cap  
0.5' High, "T"  
Post  
Lat: 39.658806°  
Long: 108.126564°

1953 Brass Cap 0.3'  
High, Mound of Stones  
Lat: 39.658633°  
Long: 108.126569°

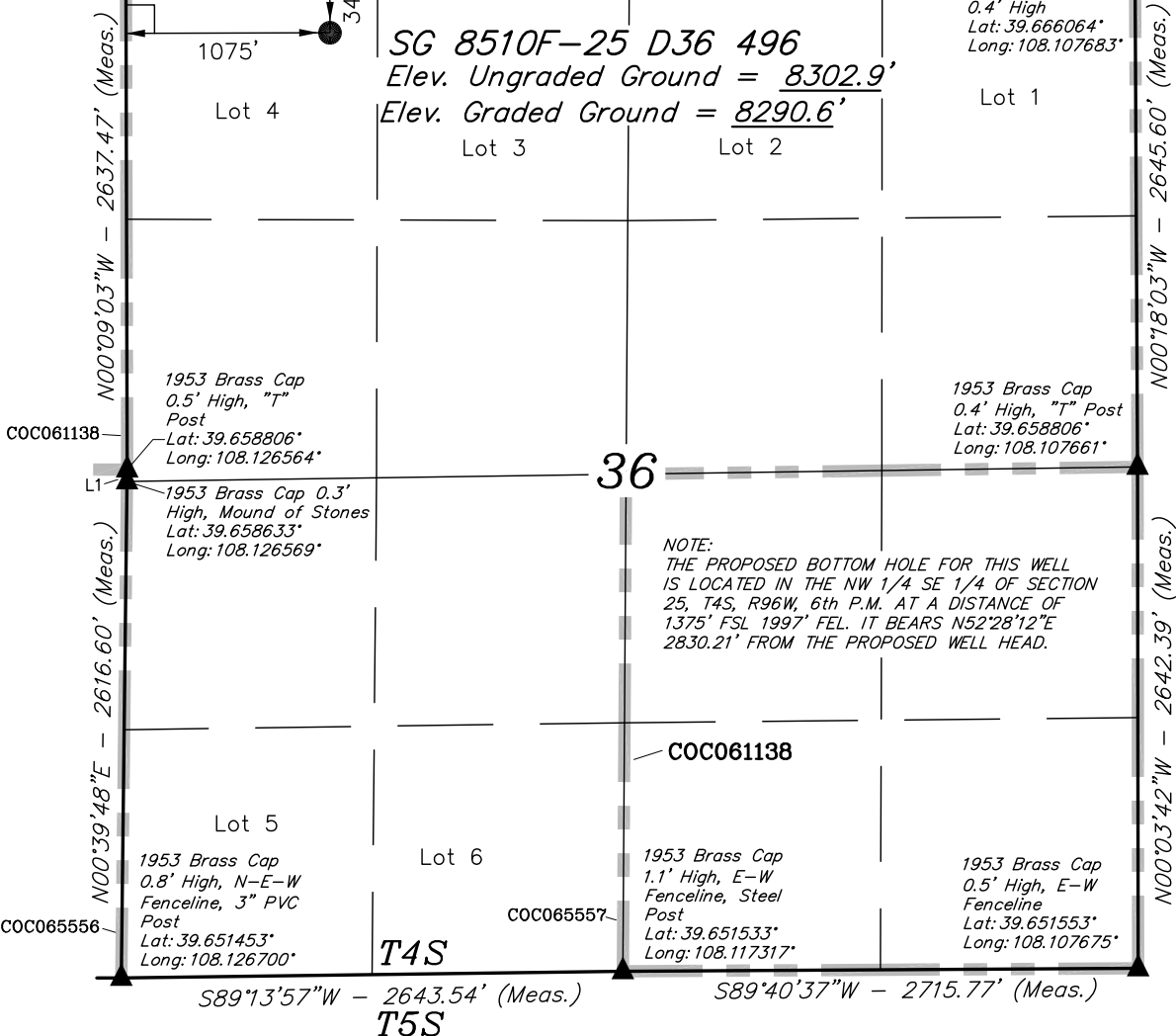
1953 Brass Cap  
0.8' High, N-E-W  
Fenceline, 3" PVC  
Post  
Lat: 39.651453°  
Long: 108.126700°

1953 Brass Cap  
1.1' High, E-W  
Fenceline, Steel  
Post  
Lat: 39.651533°  
Long: 108.117317°

1953 Brass Cap  
0.5' High, E-W  
Fenceline  
Lat: 39.651553°  
Long: 108.107675°

NOTE:  
THE PROPOSED BOTTOM HOLE FOR THIS WELL  
IS LOCATED IN THE NW 1/4 SE 1/4 OF SECTION  
25, T4S, R96W, 6th P.M. AT A DISTANCE OF  
1375' FSL 1997' FEL. IT BEARS N52°28'12"E  
2830.21' FROM THE PROPOSED WELL HEAD.

SG 8510F-25 D36 496  
Elev. Ungraded Ground = 8302.9'  
Elev. Graded Ground = 8290.6'



### LEGEND:

└─┘ = 90° SYMBOL

● = PROPOSED WELL HEAD.

▲ = SECTION CORNERS LOCATED.

SEE SHEET 7A FOR EXISTING  
IMPROVEMENT WITHIN 400' OF THE  
PROPOSED WELL DISTURBANCE

LINE TABLE		
LINE	BEARING	LENGTH
L1	S00°52'27"W	62.59'

PDOP = 1.5

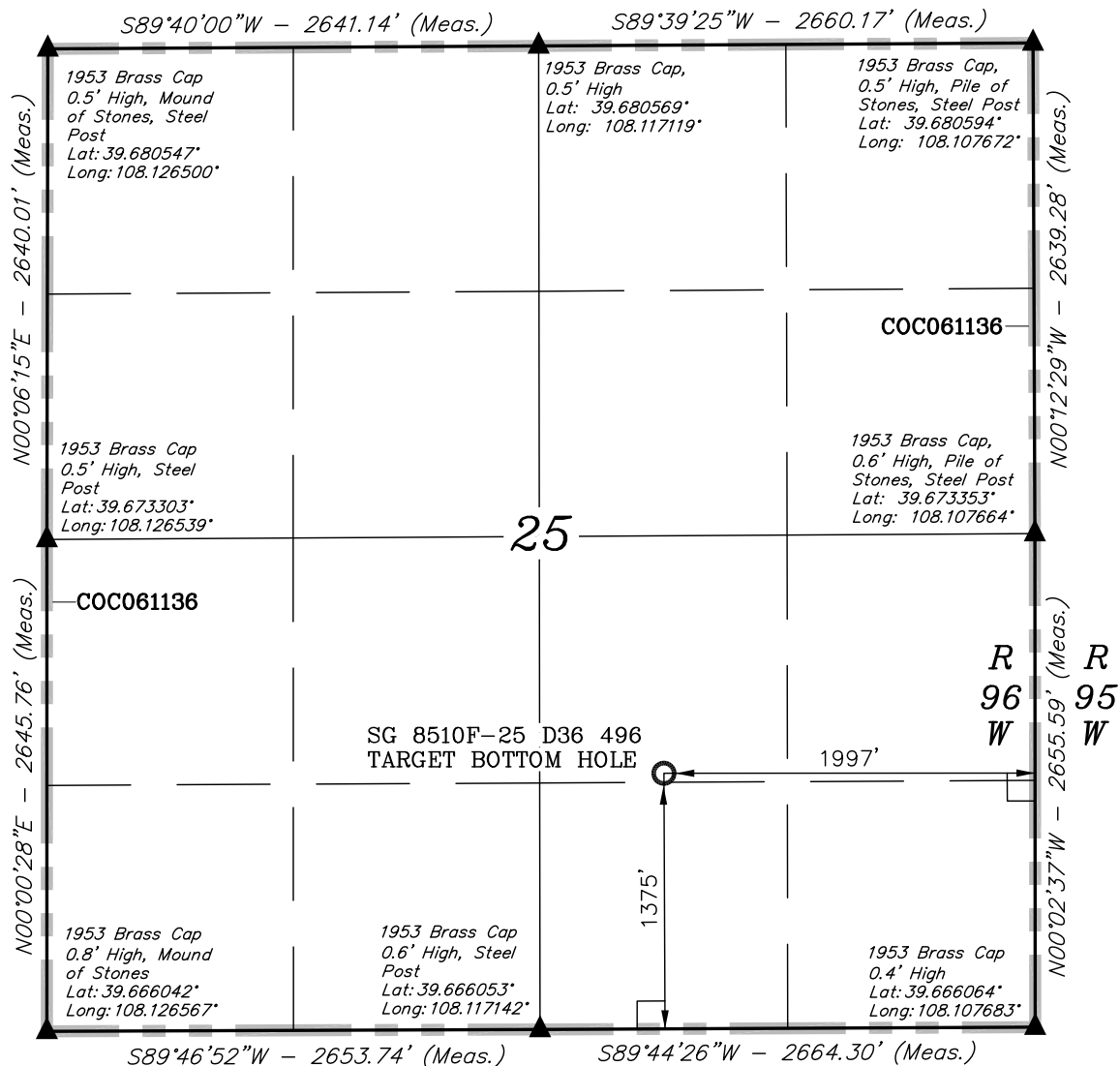
### NAD 83 (SURFACE LOCATION)

LATITUDE = 39°39'54.41" (39.665114)  
LONGITUDE = 108°07'21.90" (108.122750)

### NAD 27 (SURFACE LOCATION)

LATITUDE = 39°39'54.49" (39.665136)  
LONGITUDE = 108°07'19.61" (108.122114)

T4S, R96W, 6th P.M.



NOTE:  
THE PROPOSED WELL HEAD IS LOCATED IN  
LOT 4 OF SECTION 36, T4S, R96W, 6th P.M.  
AT A DISTANCE OF 340' FNL 1075' FWL. IT  
BEARS S52°28'12\"W 2830.21' FROM THE  
TARGET BOTTOM HOLE.

#### LEGEND:

- └─┘ = 90° SYMBOL
- = PROPOSED WELL HEAD.
- ▲ = SECTION CORNERS LOCATED.

<b>NAD 83 (TARGET BOTTOM HOLE)</b>
LATITUDE = 39°40'11.38\" (39.669828)
LONGITUDE = 108°06'53.15\" (108.114764)
<b>NAD 27 (TARGET BOTTOM HOLE)</b>
LATITUDE = 39°40'11.47\" (39.669853)
LONGITUDE = 108°06'50.86\" (108.114128)

## Encana OIL & GAS (USA) INC.

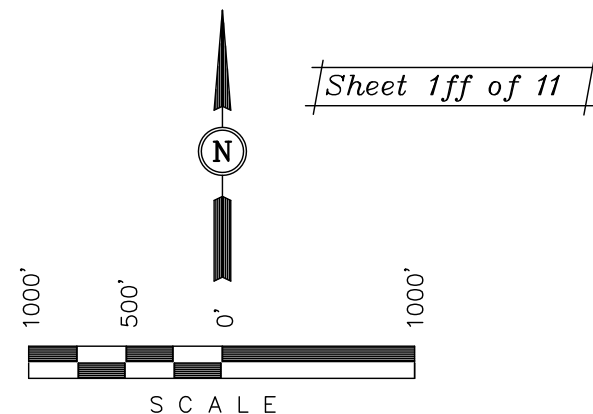
Well location, SG 8510F-25 D36 496 (TARGET  
BOTTOM HOLE), located as shown in the NE  
1/4 SW 1/4 of Section 25, T4S, R96W, 6th  
P.M., Garfield County, Colorado.

### BASIS OF ELEVATION

BENCH MARK (H79) LOCATED IN THE NE 1/4 OF SECTION  
35, T4S, R98W, 6th P.M. TAKEN FROM THE BULL FORK  
QUADRANGLE, COLORADO, 7.5 MINUTE SERIES (TOPO  
GRAPHICAL MAP) PUBLISHED BY THE UNITED STATES  
DEPARTMENT OF THE INTERIOR, GEOLOGICAL SURVEY.  
SAID ELEVATION IS MARKED AS BEING 8535 FEET.

### BASIS OF BEARINGS

BASIS OF BEARINGS IS A G.P.S. OBSERVATION.



### CERTIFICATE

THIS IS TO CERTIFY THAT THE ABOVE PLAT WAS PREPARED FROM  
FIELD NOTES OF ACTUAL SURVEYS MADE BY ME OR UNDER MY  
SUPERVISION AND THAT THE SAME ARE TRUE AND CORRECT TO THE  
BEST OF MY KNOWLEDGE AND BELIEF.

REGISTERED LAND SURVEYOR  
REGISTRATION NO. 17492  
STATE OF COLORADO  
05-20-2011

Revised: 05-18-11 D.R.B.

**UINTAH ENGINEERING & LAND SURVEYING**  
**85 SOUTH 200 EAST - VERNAL, UTAH 84078**  
(435) 789-1017

SCALE 1" = 1000'	DATE SURVEYED: 08-01-09	DATE DRAWN: 07-26-10
PARTY D.K. B.H. D.R.B.	REFERENCES G.L.O. PLAT	
WEATHER COOL	FILE Encana OIL & GAS (USA) INC.	