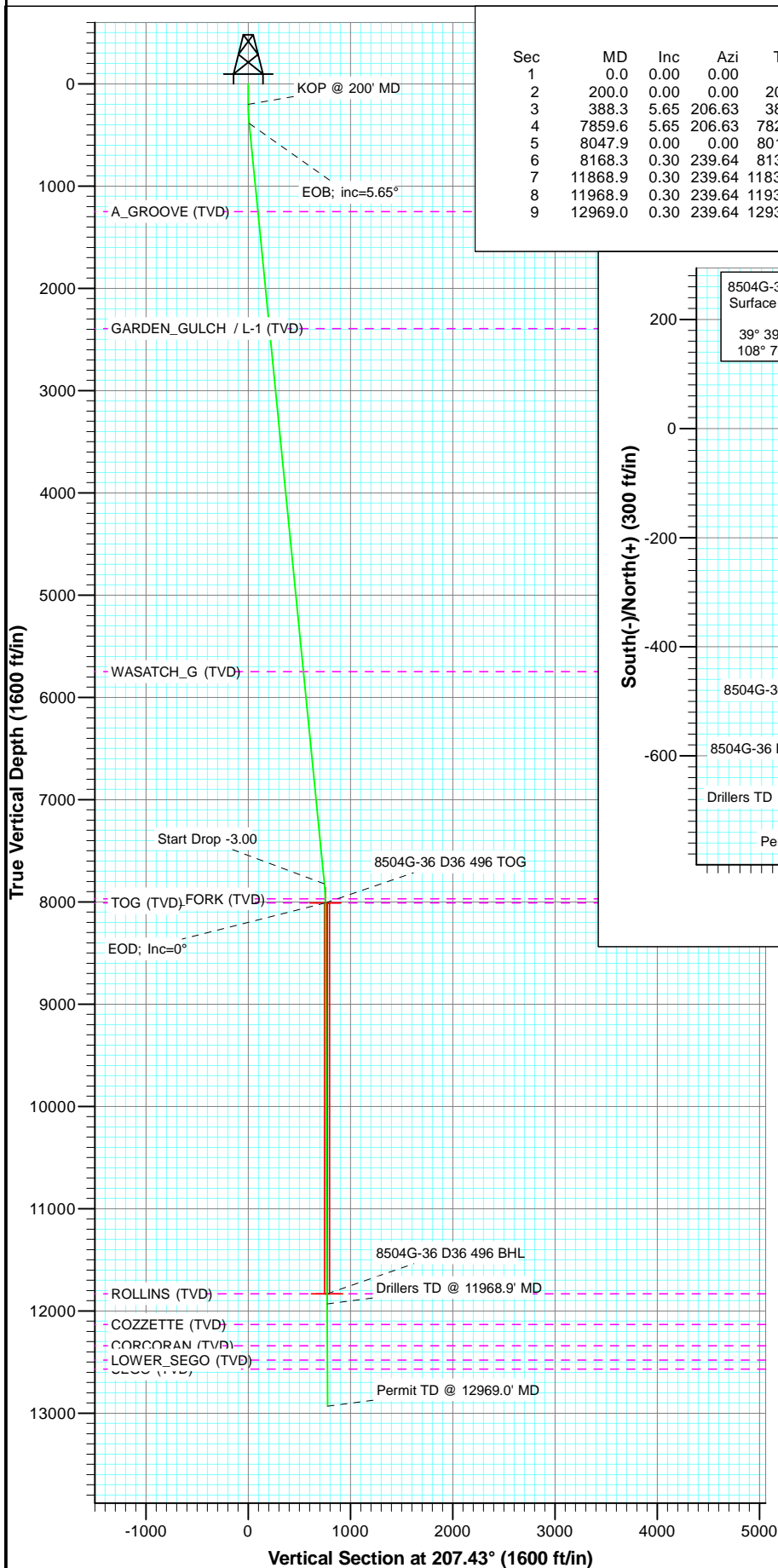


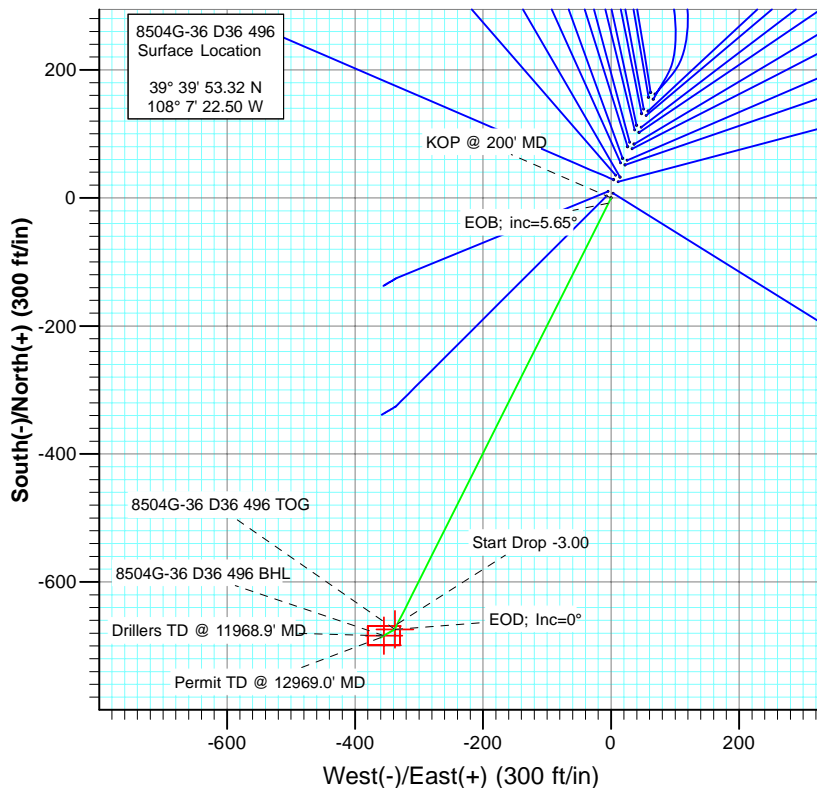


Project: Story Gulch  
Site: S36-T4S-R96W (D36 496)  
Well: 8504G-36 D36 496  
Wellbore: DD  
Plan: Plan #1



#### SECTION DETAILS

Sec	MD	Inc	Azi	TVD	+N/-S	+E/-W	Dleg	TFace	V Sect	Target
1	0.0	0.00	0.00	0.0	0.0	0.0	0.00	0.00	0.0	
2	200.0	0.00	0.00	200.0	0.0	0.0	0.00	0.00	0.0	
3	388.3	5.65	206.63	388.0	-8.3	-4.2	3.00	206.63	9.3	
4	7859.6	5.65	206.63	7823.0	-665.7	-333.8	0.00	0.00	744.7	
5	8047.9	0.00	0.00	8011.0	-674.0	-338.0	3.00	180.00	753.9	8504G-36 D36 496 TOG
6	8168.3	0.30	239.64	8131.4	-674.2	-338.3	0.25	239.64	754.2	
7	11868.9	0.30	239.64	11832.0	-684.0	-355.0	0.00	0.00	770.6	8504G-36 D36 496 BHL
8	11968.9	0.30	239.64	11932.0	-684.2	-355.5	0.00	0.00	771.1	
9	12969.0	0.30	239.64	12932.0	-686.9	-360.0	0.00	0.00	775.5	



TVDPath	MDPath	Formation
1250.0	1254.5	A_GROOVE (TVD)
2394.0	2404.1	GARDEN_GULCH / L-1 (TVD)
5750.0	5776.5	WASATCH_G (TVD)
7971.0	8007.9	WILLIAMS_FORK (TVD)
8011.0	8047.9	TOG (TVD)
11832.0	11868.9	ROLLINS (TVD)
12134.0	12171.0	COZZETTE (TVD)
12342.0	12379.0	CORCORAN (TVD)
12480.0	12517.0	LOWER_SEGO (TVD)
12568.0	12605.0	SEGO (TVD)



Azimuths to True North  
Magnetic North: 10.44°  
Magnetic Field  
Strength: 52310.7nT  
Dip Angle: 65.86°  
Date: 5/31/2011  
Model: IGRF2010

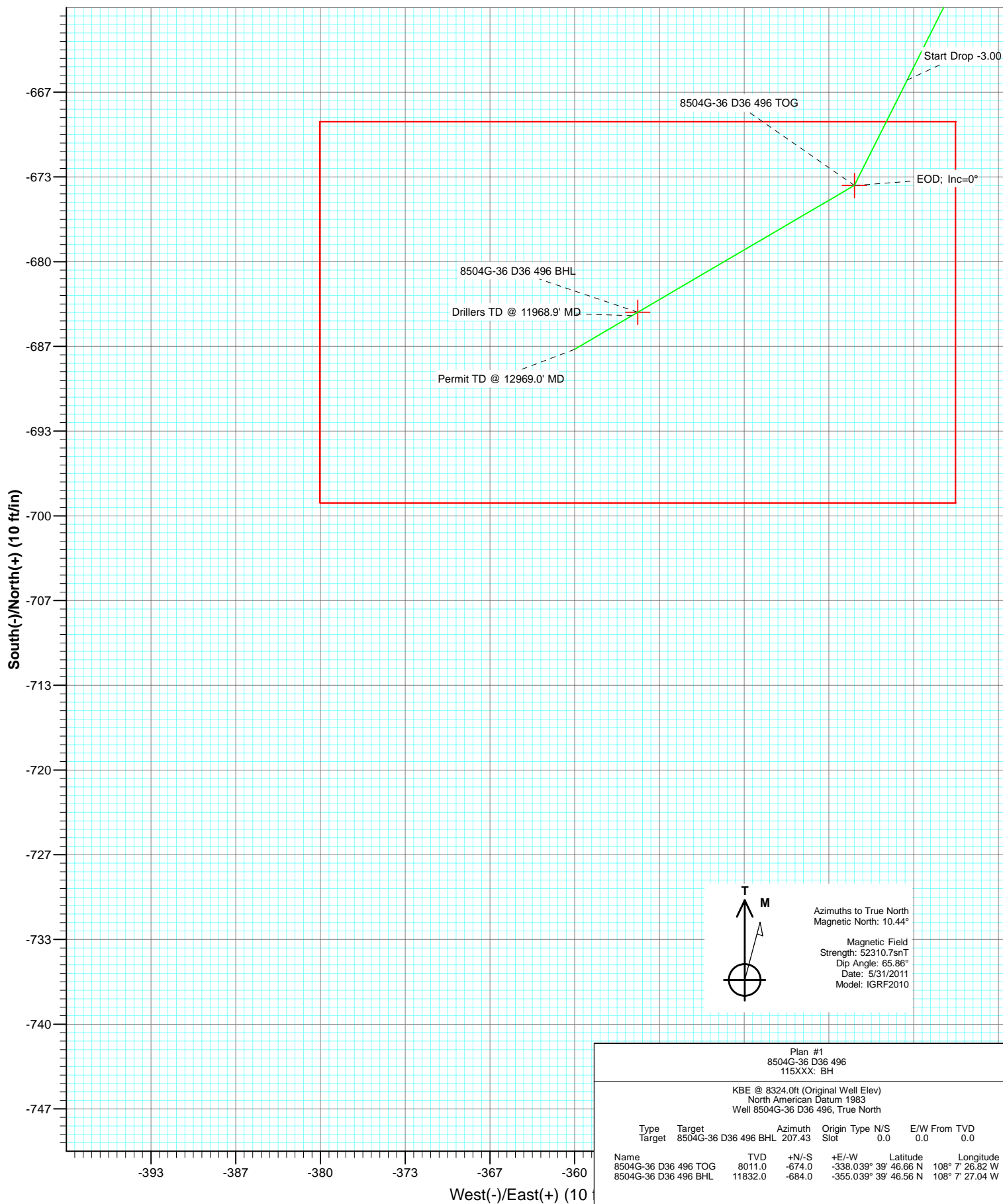
Plan #1  
8504G-36 D36 496  
115XXX: BH

KBE @ 8324.0ft (Original Well Elev)  
North American Datum 1983  
Well 8504G-36 D36 496, True North

Type	Target	Azimuth	Origin	Type	N/S	E/W	From
Target	8504G-36 D36 496 BHL	207.43	Slot		0.0	0.0	TVD
Name	8504G-36 D36 496 TOG	8011.0	+N/-S	+E/-W	Latitude	Longitude	
			-674.0	-338.039° 39'	46.66 N	108° 7' 26.82 W	
	8504G-36 D36 496 BHL	11832.0	-684.0	-355.039° 39'	46.56 N	108° 7' 27.04 W	



Project: Story Gulch  
 Site: S36-T4S-R96W (D36 496)  
 Well: 8504G-36 D36 496  
 Wellbore: DD  
 Plan: Plan #1



Azimuths to True North  
 Magnetic North: 10.44°  
 Magnetic Field  
 Strength: 52310.7nT  
 Dip Angle: 65.86°  
 Date: 5/31/2011  
 Model: IGRF2010

Plan #1 8504G-36 D36 496 115XXX: BH							
KBE @ 8324.0ft (Original Well Elev) North American Datum 1983 Well 8504G-36 D36 496, True North							
Type	Target	Azimuth	Origin	Type	N/S	E/W	From TVD
Target	8504G-36 D36 496 BHL	207.43	Slot		0.0	0.0	0.0
Name	TVD	+N/-S	+E/-W	Latitude	Longitude		
8504G-36 D36 496 TOG	8011.0	-674.0	-338.039° 39'	46.66 N	108° 7'	26.82 W	
8504G-36 D36 496 BHL	11832.0	-684.0	-355.039° 39'	46.56 N	108° 7'	27.04 W	

# Cathedral Energy Services

## Planning Report

<b>Database:</b>	EDM 5000.1 US Multi Users DB	<b>Local Co-ordinate Reference:</b>	Well 8504G-36 D36 496
<b>Company:</b>	EnCana Oil & Gas (USA) Inc	<b>TVD Reference:</b>	KBE @ 8324.0ft (Original Well Elev)
<b>Project:</b>	Story Gulch	<b>MD Reference:</b>	KBE @ 8324.0ft (Original Well Elev)
<b>Site:</b>	S36-T4S-R96W (D36 496)	<b>North Reference:</b>	True
<b>Well:</b>	8504G-36 D36 496	<b>Survey Calculation Method:</b>	Minimum Curvature
<b>Wellbore:</b>	DD		
<b>Design:</b>	Plan #1		

<b>Project</b>	Story Gulch		
<b>Map System:</b>	US State Plane 1983	<b>System Datum:</b>	Mean Sea Level
<b>Geo Datum:</b>	North American Datum 1983		
<b>Map Zone:</b>	Colorado Central Zone		

<b>Site</b>	S36-T4S-R96W (D36 496)			
<b>Site Position:</b>		<b>Northing:</b>	1,677,676.10 ft	<b>Latitude:</b> 39° 39' 53.09 N
<b>From:</b>	Lat/Long	<b>Easting:</b>	2,261,675.01 ft	<b>Longitude:</b> 108° 7' 22.74 W
<b>Position Uncertainty:</b>	0.0 ft	<b>Slot Radius:</b>	13.200 in	<b>Grid Convergence:</b> -1.65 °

<b>Well</b>	8504G-36 D36 496			
<b>Well Position</b>	<b>+N/-S</b>	0.0 ft	<b>Northing:</b>	1,677,698.50 ft
	<b>+E/-W</b>	0.0 ft	<b>Easting:</b>	2,261,694.11 ft
<b>Position Uncertainty</b>	0.0 ft		<b>Wellhead Elevation:</b>	ft
			<b>Ground Level:</b>	8,302.0 ft

<b>Wellbore</b>	DD				
<b>Magnetics</b>	<b>Model Name</b>	<b>Sample Date</b>	<b>Declination (°)</b>	<b>Dip Angle (°)</b>	<b>Field Strength (nT)</b>
	IGRF2010	5/31/2011	10.44	65.86	52,311

<b>Design</b>	Plan #1			
<b>Audit Notes:</b>				
<b>Version:</b>	<b>Phase:</b>	PLAN	<b>Tie On Depth:</b>	0.0
<b>Vertical Section:</b>	<b>Depth From (TVD) (ft)</b>	<b>+N/-S (ft)</b>	<b>+E/-W (ft)</b>	<b>Direction (°)</b>
	0.0	0.0	0.0	207.43

<b>Plan Sections</b>										
Measured Depth (ft)	Inclination (°)	Azimuth (°)	Vertical Depth (ft)	+N/-S (ft)	+E/-W (ft)	Dogleg Rate (°/100ft)	Build Rate (°/100ft)	Turn Rate (°/100ft)	TFO (°)	Target
0.0	0.00	0.00	0.0	0.0	0.0	0.00	0.00	0.00	0.00	
200.0	0.00	0.00	200.0	0.0	0.0	0.00	0.00	0.00	0.00	
388.3	5.65	206.63	388.0	-8.3	-4.2	3.00	3.00	0.00	206.63	
7,859.6	5.65	206.63	7,823.0	-665.7	-333.8	0.00	0.00	0.00	0.00	
8,047.9	0.00	0.00	8,011.0	-674.0	-338.0	3.00	-3.00	0.00	180.00	8504G-36 D36 496 T
8,168.3	0.30	239.64	8,131.4	-674.2	-338.3	0.25	0.25	-100.00	239.64	
11,868.9	0.30	239.64	11,832.0	-684.0	-355.0	0.00	0.00	0.00	0.00	8504G-36 D36 496 BI
11,968.9	0.30	239.64	11,932.0	-684.2	-355.5	0.00	0.00	0.00	0.00	
12,969.0	0.30	239.64	12,932.0	-686.9	-360.0	0.00	0.00	0.00	0.00	

# Cathedral Energy Services

## Planning Report

<b>Database:</b>	EDM 5000.1 US Multi Users DB	<b>Local Co-ordinate Reference:</b>	Well 8504G-36 D36 496
<b>Company:</b>	EnCana Oil & Gas (USA) Inc	<b>TVD Reference:</b>	KBE @ 8324.0ft (Original Well Elev)
<b>Project:</b>	Story Gulch	<b>MD Reference:</b>	KBE @ 8324.0ft (Original Well Elev)
<b>Site:</b>	S36-T4S-R96W (D36 496)	<b>North Reference:</b>	True
<b>Well:</b>	8504G-36 D36 496	<b>Survey Calculation Method:</b>	Minimum Curvature
<b>Wellbore:</b>	DD		
<b>Design:</b>	Plan #1		

### Planned Survey

Measured Depth (ft)	Inclination (°)	Azimuth (°)	Vertical Depth (ft)	+N/-S (ft)	+E/-W (ft)	Vertical Section (ft)	Dogleg Rate (°/100ft)	Build Rate (°/100ft)	Comments / Formations
0.0	0.00	0.00	0.0	0.0	0.0	0.0	0.00	0.00	
100.0	0.00	0.00	100.0	0.0	0.0	0.0	0.00	0.00	
200.0	0.00	0.00	200.0	0.0	0.0	0.0	0.00	0.00	KOP @ 200' MD
300.0	3.00	206.63	300.0	-2.3	-1.2	2.6	3.00	3.00	
388.3	5.65	206.63	388.0	-8.3	-4.2	9.3	3.00	3.00	EOB; inc=5.65°
400.0	5.65	206.63	399.6	-9.3	-4.7	10.4	0.00	0.00	
500.0	5.65	206.63	499.2	-18.1	-9.1	20.3	0.00	0.00	
600.0	5.65	206.63	598.7	-26.9	-13.5	30.1	0.00	0.00	
700.0	5.65	206.63	698.2	-35.7	-17.9	40.0	0.00	0.00	
800.0	5.65	206.63	797.7	-44.5	-22.3	49.8	0.00	0.00	
900.0	5.65	206.63	897.2	-53.3	-26.7	59.6	0.00	0.00	
1,000.0	5.65	206.63	996.7	-62.1	-31.2	69.5	0.00	0.00	
1,100.0	5.65	206.63	1,096.2	-70.9	-35.6	79.3	0.00	0.00	
1,200.0	5.65	206.63	1,195.8	-79.7	-40.0	89.2	0.00	0.00	
1,254.5	5.65	206.63	1,250.0	-84.5	-42.4	94.5	0.00	0.00	A_GROOVE (TVD)
1,300.0	5.65	206.63	1,295.3	-88.5	-44.4	99.0	0.00	0.00	
1,400.0	5.65	206.63	1,394.8	-97.3	-48.8	108.9	0.00	0.00	
1,500.0	5.65	206.63	1,494.3	-106.1	-53.2	118.7	0.00	0.00	
1,600.0	5.65	206.63	1,593.8	-114.9	-57.6	128.5	0.00	0.00	
1,700.0	5.65	206.63	1,693.3	-123.7	-62.0	138.4	0.00	0.00	
1,800.0	5.65	206.63	1,792.8	-132.5	-66.5	148.2	0.00	0.00	
1,900.0	5.65	206.63	1,892.4	-141.3	-70.9	158.1	0.00	0.00	
2,000.0	5.65	206.63	1,991.9	-150.1	-75.3	167.9	0.00	0.00	
2,100.0	5.65	206.63	2,091.4	-158.9	-79.7	177.8	0.00	0.00	
2,200.0	5.65	206.63	2,190.9	-167.7	-84.1	187.6	0.00	0.00	
2,300.0	5.65	206.63	2,290.4	-176.5	-88.5	197.4	0.00	0.00	
2,400.0	5.65	206.63	2,389.9	-185.3	-92.9	207.3	0.00	0.00	
2,404.1	5.65	206.63	2,394.0	-185.7	-93.1	207.7	0.00	0.00	GARDEN_GULCH / L-1 (TVD)
2,500.0	5.65	206.63	2,489.4	-194.1	-97.3	217.1	0.00	0.00	
2,600.0	5.65	206.63	2,589.0	-202.9	-101.8	227.0	0.00	0.00	
2,700.0	5.65	206.63	2,688.5	-211.7	-106.2	236.8	0.00	0.00	
2,800.0	5.65	206.63	2,788.0	-220.5	-110.6	246.7	0.00	0.00	
2,900.0	5.65	206.63	2,887.5	-229.3	-115.0	256.5	0.00	0.00	
3,000.0	5.65	206.63	2,987.0	-238.1	-119.4	266.3	0.00	0.00	
3,100.0	5.65	206.63	3,086.5	-246.9	-123.8	276.2	0.00	0.00	
3,200.0	5.65	206.63	3,186.0	-255.7	-128.2	286.0	0.00	0.00	
3,300.0	5.65	206.63	3,285.6	-264.5	-132.6	295.9	0.00	0.00	
3,400.0	5.65	206.63	3,385.1	-273.3	-137.1	305.7	0.00	0.00	
3,500.0	5.65	206.63	3,484.6	-282.1	-141.5	315.6	0.00	0.00	
3,600.0	5.65	206.63	3,584.1	-290.9	-145.9	325.4	0.00	0.00	
3,700.0	5.65	206.63	3,683.6	-299.7	-150.3	335.2	0.00	0.00	
3,800.0	5.65	206.63	3,783.1	-308.5	-154.7	345.1	0.00	0.00	
3,900.0	5.65	206.63	3,882.6	-317.3	-159.1	354.9	0.00	0.00	
4,000.0	5.65	206.63	3,982.2	-326.1	-163.5	364.8	0.00	0.00	
4,100.0	5.65	206.63	4,081.7	-334.9	-167.9	374.6	0.00	0.00	
4,200.0	5.65	206.63	4,181.2	-343.7	-172.4	384.5	0.00	0.00	
4,300.0	5.65	206.63	4,280.7	-352.5	-176.8	394.3	0.00	0.00	
4,400.0	5.65	206.63	4,380.2	-361.3	-181.2	404.1	0.00	0.00	
4,500.0	5.65	206.63	4,479.7	-370.1	-185.6	414.0	0.00	0.00	
4,600.0	5.65	206.63	4,579.2	-378.9	-190.0	423.8	0.00	0.00	
4,700.0	5.65	206.63	4,678.8	-387.7	-194.4	433.7	0.00	0.00	
4,800.0	5.65	206.63	4,778.3	-396.5	-198.8	443.5	0.00	0.00	

# Cathedral Energy Services

## Planning Report

<b>Database:</b>	EDM 5000.1 US Multi Users DB	<b>Local Co-ordinate Reference:</b>	Well 8504G-36 D36 496
<b>Company:</b>	EnCana Oil & Gas (USA) Inc	<b>TVD Reference:</b>	KBE @ 8324.0ft (Original Well Elev)
<b>Project:</b>	Story Gulch	<b>MD Reference:</b>	KBE @ 8324.0ft (Original Well Elev)
<b>Site:</b>	S36-T4S-R96W (D36 496)	<b>North Reference:</b>	True
<b>Well:</b>	8504G-36 D36 496	<b>Survey Calculation Method:</b>	Minimum Curvature
<b>Wellbore:</b>	DD		
<b>Design:</b>	Plan #1		

Planned Survey									
Measured Depth (ft)	Inclination (°)	Azimuth (°)	Vertical Depth (ft)	+N/-S (ft)	+E/-W (ft)	Vertical Section (ft)	Dogleg Rate (°/100ft)	Build Rate (°/100ft)	Comments / Formations
4,900.0	5.65	206.63	4,877.8	-405.3	-203.2	453.3	0.00	0.00	
5,000.0	5.65	206.63	4,977.3	-414.1	-207.7	463.2	0.00	0.00	
5,100.0	5.65	206.63	5,076.8	-422.9	-212.1	473.0	0.00	0.00	
5,200.0	5.65	206.63	5,176.3	-431.7	-216.5	482.9	0.00	0.00	
5,300.0	5.65	206.63	5,275.8	-440.5	-220.9	492.7	0.00	0.00	
5,400.0	5.65	206.63	5,375.4	-449.3	-225.3	502.6	0.00	0.00	
5,500.0	5.65	206.63	5,474.9	-458.1	-229.7	512.4	0.00	0.00	
5,600.0	5.65	206.63	5,574.4	-466.9	-234.1	522.2	0.00	0.00	
5,700.0	5.65	206.63	5,673.9	-475.7	-238.5	532.1	0.00	0.00	
5,776.5	5.65	206.63	5,750.0	-482.4	-241.9	539.6	0.00	0.00	WASATCH_G (TVD)
5,800.0	5.65	206.63	5,773.4	-484.5	-243.0	541.9	0.00	0.00	
5,900.0	5.65	206.63	5,872.9	-493.3	-247.4	551.8	0.00	0.00	
6,000.0	5.65	206.63	5,972.4	-502.1	-251.8	561.6	0.00	0.00	
6,100.0	5.65	206.63	6,072.0	-510.9	-256.2	571.5	0.00	0.00	
6,200.0	5.65	206.63	6,171.5	-519.7	-260.6	581.3	0.00	0.00	
6,300.0	5.65	206.63	6,271.0	-528.5	-265.0	591.1	0.00	0.00	
6,400.0	5.65	206.63	6,370.5	-537.3	-269.4	601.0	0.00	0.00	
6,500.0	5.65	206.63	6,470.0	-546.1	-273.8	610.8	0.00	0.00	
6,600.0	5.65	206.63	6,569.5	-554.9	-278.3	620.7	0.00	0.00	
6,700.0	5.65	206.63	6,669.0	-563.7	-282.7	630.5	0.00	0.00	
6,800.0	5.65	206.63	6,768.6	-572.5	-287.1	640.4	0.00	0.00	
6,900.0	5.65	206.63	6,868.1	-581.3	-291.5	650.2	0.00	0.00	
7,000.0	5.65	206.63	6,967.6	-590.1	-295.9	660.0	0.00	0.00	
7,100.0	5.65	206.63	7,067.1	-598.9	-300.3	669.9	0.00	0.00	
7,200.0	5.65	206.63	7,166.6	-607.7	-304.7	679.7	0.00	0.00	
7,300.0	5.65	206.63	7,266.1	-616.5	-309.1	689.6	0.00	0.00	
7,400.0	5.65	206.63	7,365.6	-625.3	-313.6	699.4	0.00	0.00	
7,500.0	5.65	206.63	7,465.2	-634.1	-318.0	709.3	0.00	0.00	
7,600.0	5.65	206.63	7,564.7	-642.9	-322.4	719.1	0.00	0.00	
7,700.0	5.65	206.63	7,664.2	-651.7	-326.8	728.9	0.00	0.00	
7,800.0	5.65	206.63	7,763.7	-660.5	-331.2	738.8	0.00	0.00	
7,859.6	5.65	206.63	7,823.0	-665.7	-333.8	744.7	0.00	0.00	Start Drop -3.00
7,900.0	4.44	206.63	7,863.3	-668.9	-335.4	748.2	3.00	-3.00	
8,000.0	1.44	206.63	7,963.1	-673.5	-337.7	753.3	3.00	-3.00	
8,007.9	1.20	206.63	7,971.0	-673.6	-337.8	753.5	3.00	-3.00	WILLIAMS_FORK (TVD)
8,047.9	0.00	0.00	8,011.0	-674.0	-338.0	753.9	3.00	-3.00	EOD; Inc=0° - TOG (TVD) - 8504G-36 D36 496
8,100.0	0.13	239.64	8,063.1	-674.0	-338.1	754.0	0.25	0.25	
8,168.3	0.30	239.64	8,131.4	-674.2	-338.3	754.2	0.25	0.25	
8,200.0	0.30	239.64	8,163.1	-674.2	-338.4	754.3	0.00	0.00	
8,300.0	0.30	239.64	8,263.1	-674.5	-338.9	754.8	0.00	0.00	
8,400.0	0.30	239.64	8,363.1	-674.8	-339.3	755.2	0.00	0.00	
8,500.0	0.30	239.64	8,463.1	-675.0	-339.8	755.7	0.00	0.00	
8,600.0	0.30	239.64	8,563.1	-675.3	-340.2	756.1	0.00	0.00	
8,700.0	0.30	239.64	8,663.1	-675.6	-340.7	756.6	0.00	0.00	
8,800.0	0.30	239.64	8,763.1	-675.8	-341.1	757.0	0.00	0.00	
8,900.0	0.30	239.64	8,863.1	-676.1	-341.6	757.4	0.00	0.00	
9,000.0	0.30	239.64	8,963.1	-676.4	-342.0	757.9	0.00	0.00	
9,100.0	0.30	239.64	9,063.1	-676.6	-342.5	758.3	0.00	0.00	
9,200.0	0.30	239.64	9,163.1	-676.9	-342.9	758.8	0.00	0.00	
9,300.0	0.30	239.64	9,263.1	-677.2	-343.4	759.2	0.00	0.00	
9,400.0	0.30	239.64	9,363.1	-677.4	-343.9	759.7	0.00	0.00	
9,500.0	0.30	239.64	9,463.1	-677.7	-344.3	760.1	0.00	0.00	

# Cathedral Energy Services

## Planning Report

<b>Database:</b>	EDM 5000.1 US Multi Users DB	<b>Local Co-ordinate Reference:</b>	Well 8504G-36 D36 496
<b>Company:</b>	EnCana Oil & Gas (USA) Inc	<b>TVD Reference:</b>	KBE @ 8324.0ft (Original Well Elev)
<b>Project:</b>	Story Gulch	<b>MD Reference:</b>	KBE @ 8324.0ft (Original Well Elev)
<b>Site:</b>	S36-T4S-R96W (D36 496)	<b>North Reference:</b>	True
<b>Well:</b>	8504G-36 D36 496	<b>Survey Calculation Method:</b>	Minimum Curvature
<b>Wellbore:</b>	DD		
<b>Design:</b>	Plan #1		

Planned Survey									
Measured Depth (ft)	Inclination (°)	Azimuth (°)	Vertical Depth (ft)	+N/-S (ft)	+E/-W (ft)	Vertical Section (ft)	Dogleg Rate (°/100ft)	Build Rate (°/100ft)	Comments / Formations
9,600.0	0.30	239.64	9,563.1	-678.0	-344.8	760.6	0.00	0.00	
9,700.0	0.30	239.64	9,663.1	-678.2	-345.2	761.0	0.00	0.00	
9,800.0	0.30	239.64	9,763.1	-678.5	-345.7	761.4	0.00	0.00	
9,900.0	0.30	239.64	9,863.1	-678.8	-346.1	761.9	0.00	0.00	
10,000.0	0.30	239.64	9,963.1	-679.0	-346.6	762.3	0.00	0.00	
10,100.0	0.30	239.64	10,063.1	-679.3	-347.0	762.8	0.00	0.00	
10,200.0	0.30	239.64	10,163.1	-679.6	-347.5	763.2	0.00	0.00	
10,300.0	0.30	239.64	10,263.1	-679.8	-347.9	763.7	0.00	0.00	
10,400.0	0.30	239.64	10,363.1	-680.1	-348.4	764.1	0.00	0.00	
10,500.0	0.30	239.64	10,463.1	-680.3	-348.8	764.6	0.00	0.00	
10,600.0	0.30	239.64	10,563.1	-680.6	-349.3	765.0	0.00	0.00	
10,700.0	0.30	239.64	10,663.1	-680.9	-349.7	765.4	0.00	0.00	
10,800.0	0.30	239.64	10,763.1	-681.1	-350.2	765.9	0.00	0.00	
10,900.0	0.30	239.64	10,863.1	-681.4	-350.7	766.3	0.00	0.00	
11,000.0	0.30	239.64	10,963.1	-681.7	-351.1	766.8	0.00	0.00	
11,100.0	0.30	239.64	11,063.1	-681.9	-351.6	767.2	0.00	0.00	
11,200.0	0.30	239.64	11,163.1	-682.2	-352.0	767.7	0.00	0.00	
11,300.0	0.30	239.64	11,263.1	-682.5	-352.5	768.1	0.00	0.00	
11,400.0	0.30	239.64	11,363.1	-682.7	-352.9	768.6	0.00	0.00	
11,500.0	0.30	239.64	11,463.1	-683.0	-353.4	769.0	0.00	0.00	
11,600.0	0.30	239.64	11,563.1	-683.3	-353.8	769.4	0.00	0.00	
11,700.0	0.30	239.64	11,663.1	-683.5	-354.3	769.9	0.00	0.00	
11,800.0	0.30	239.64	11,763.1	-683.8	-354.7	770.3	0.00	0.00	
11,868.9	0.30	239.64	11,832.0	-684.0	-355.0	770.6	0.00	0.00	ROLLINS (TVD) - 8504G-36 D36 496 BHL
11,900.0	0.30	239.64	11,863.1	-684.1	-355.2	770.8	0.00	0.00	
11,968.9	0.30	239.64	11,932.0	-684.2	-355.5	771.1	0.00	0.00	Drillers TD @ 11968.9' MD
12,000.0	0.30	239.64	11,963.1	-684.3	-355.6	771.2	0.00	0.00	
12,100.0	0.30	239.64	12,063.0	-684.6	-356.1	771.7	0.00	0.00	
12,171.0	0.30	239.64	12,134.0	-684.8	-356.4	772.0	0.00	0.00	COZZETTE (TVD)
12,200.0	0.30	239.64	12,163.0	-684.9	-356.5	772.1	0.00	0.00	
12,300.0	0.30	239.64	12,263.0	-685.1	-357.0	772.6	0.00	0.00	
12,379.0	0.30	239.64	12,342.0	-685.3	-357.4	772.9	0.00	0.00	CORCORAN (TVD)
12,400.0	0.30	239.64	12,363.0	-685.4	-357.4	773.0	0.00	0.00	
12,500.0	0.30	239.64	12,463.0	-685.7	-357.9	773.4	0.00	0.00	
12,517.0	0.30	239.64	12,480.0	-685.7	-358.0	773.5	0.00	0.00	LOWER_SEGO (TVD)
12,600.0	0.30	239.64	12,563.0	-685.9	-358.4	773.9	0.00	0.00	
12,605.0	0.30	239.64	12,568.0	-685.9	-358.4	773.9	0.00	0.00	SEGO (TVD)
12,700.0	0.30	239.64	12,663.0	-686.2	-358.8	774.3	0.00	0.00	
12,800.0	0.30	239.64	12,763.0	-686.5	-359.3	774.8	0.00	0.00	
12,900.0	0.30	239.64	12,863.0	-686.7	-359.7	775.2	0.00	0.00	
12,969.0	0.30	239.64	12,932.0	-686.9	-360.0	775.5	0.00	0.00	

# Cathedral Energy Services

## Planning Report

<b>Database:</b>	EDM 5000.1 US Multi Users DB	<b>Local Co-ordinate Reference:</b>	Well 8504G-36 D36 496
<b>Company:</b>	EnCana Oil & Gas (USA) Inc	<b>TVD Reference:</b>	KBE @ 8324.0ft (Original Well Elev)
<b>Project:</b>	Story Gulch	<b>MD Reference:</b>	KBE @ 8324.0ft (Original Well Elev)
<b>Site:</b>	S36-T4S-R96W (D36 496)	<b>North Reference:</b>	True
<b>Well:</b>	8504G-36 D36 496	<b>Survey Calculation Method:</b>	Minimum Curvature
<b>Wellbore:</b>	DD		
<b>Design:</b>	Plan #1		

Targets									
Target Name									
- hit/miss target	Dip Angle	Dip Dir.	TVD	+N/-S	+E/-W	Northing	Easting	Latitude	Longitude
- Shape	(°)	(°)	(ft)	(ft)	(ft)	(ft)	(ft)		
8504G-36 D36 496 BHL	0.00	0.00	11,832.0	-684.0	-355.0	1,677,025.05	2,261,319.47	39° 39' 46.56 N	108° 7' 27.04 W
- plan hits target center									
- Rectangle (sides W30.0 H50.0 D0.0)									
8504G-36 D36 496 TOG	0.00	0.00	8,011.0	-674.0	-338.0	1,677,034.54	2,261,336.80	39° 39' 46.66 N	108° 7' 26.82 W
- plan hits target center									
- Point									

Formations						
Measured Depth	Vertical Depth	Name	Lithology	Dip	Dip Direction	
(ft)	(ft)			(°)	(°)	
1,254.5	1,250.0	A_GROOVE (TVD)				
2,404.1	2,394.0	GARDEN_GULCH / L-1 (TVD)				
5,776.5	5,750.0	WASATCH_G (TVD)				
8,007.9	7,971.0	WILLIAMS_FORK (TVD)				
8,047.9	8,011.0	TOG (TVD)				
11,868.9	11,832.0	ROLLINS (TVD)				
12,171.0	12,134.0	COZZETTE (TVD)				
12,379.0	12,342.0	CORCORAN (TVD)				
12,517.0	12,480.0	LOWER_SEGO (TVD)				
12,605.0	12,568.0	SEGO (TVD)				

Plan Annotations					
Measured Depth	Vertical Depth	Local Coordinates			
(ft)	(ft)	+N/-S	+E/-W	Comment	
(ft)	(ft)	(ft)	(ft)		
200.0	200.0	0.0	0.0	KOP @ 200' MD	
388.3	388.0	-8.3	-4.2	EOB; inc=5.65°	
7,859.6	7,823.0	-665.7	-333.8	Start Drop -3.00	
8,047.9	8,011.0	-674.0	-338.0	EOD; Inc=0°	
11,968.9	11,932.0	-674.2	-338.3	Drillers TD @ 11968.9' MD	
12,969.0	12,932.0	-684.0	-355.0	Permit TD @ 12969.0' MD	