

Nearest:  
 Building 1018' northeast  
 Public Road 606' north  
 Property Line 159' south  
 Above Ground Utility 961' northeast  
 Railroad 26,570' northwest

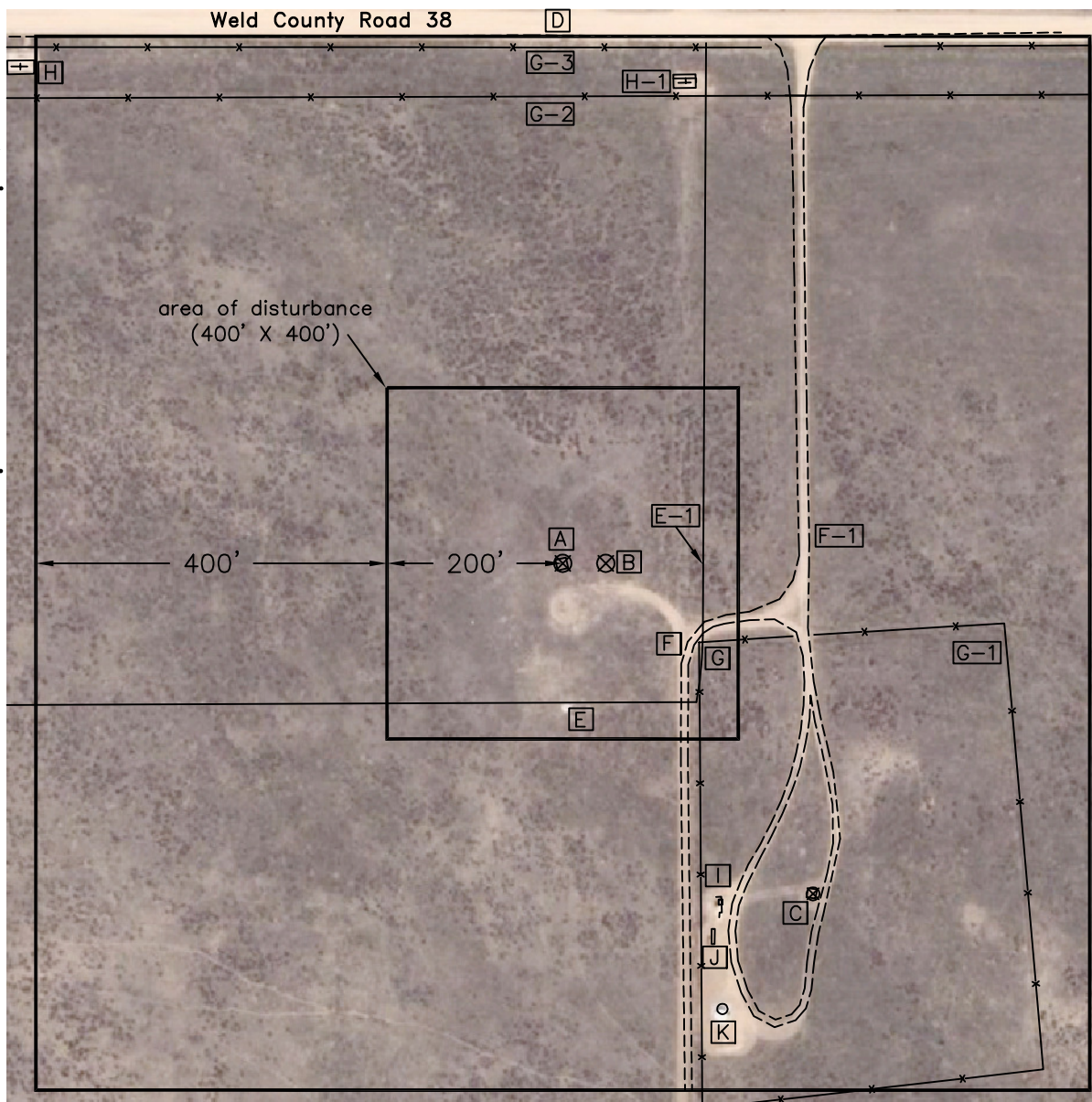
# Location Drawing

Existing Well Data:  
 Aristocrat Angus 0-2-4  
 Latitude: N 40.25993°  
 Longitude: W 104.67530°  
 FNL: 622'  
 FWL: 674'  
 PDOP: 2.0

Existing Well Data:  
 BB DRAW H 4-2 J  
 Latitude: N 40.25889°  
 Longitude: W 104.67429°  
 FNL: 999'  
 FWL: 956'  
 PDOP: 2.1

Field observations  
 taken on 4/17/11 by  
 operator J.R. McGehee.

**Distances listed below  
 are measured from  
 the existing  
 Aristocrat Angus 0-2-4**



- [A] existing Aristocrat Angus 0-2-4
- [B] proposed Aristocrat Angus 2-4 49' east
- [C] existing BB DRAW H 4-2 J 472' southeast
- [D] public road 606' north
- [E] approximate property line 159' south
- [E-1] approximate property line 160' east
- [F] dirt drive 168' southeast
- [F-1] dirt drive 269' east
- [G] fence 180' southeast
- [G-1] fence 507' southeast
- [G-2] fence 532' north
- [G-3] fence 588' north
- [H] above ground gas line 820' northwest
- [H-1] above ground gas line 556' northeast
- [I] above ground gas/meter house line 418' southeast
- [J] separator 449' southeast
- [K] tank 434' southeast



## Aristocrat Angus Pad Location Drawing Improvements extending 400' from disturbance

Township 3 North, Range 65 West,  
 Section 4: NW $\frac{1}{4}$  NW $\frac{1}{4}$   
 Weld County, Colorado

Scale: 1"=200'

April 19, 2011

PLS Group, LLC

109 Coronado Ct. - Bldg. 7, Fort Collins, Colorado 80525  
 Phone: (970) 227-1312