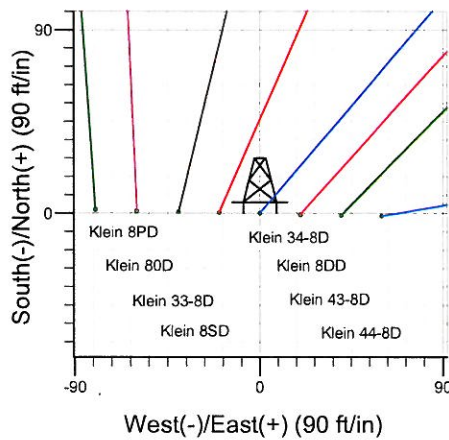
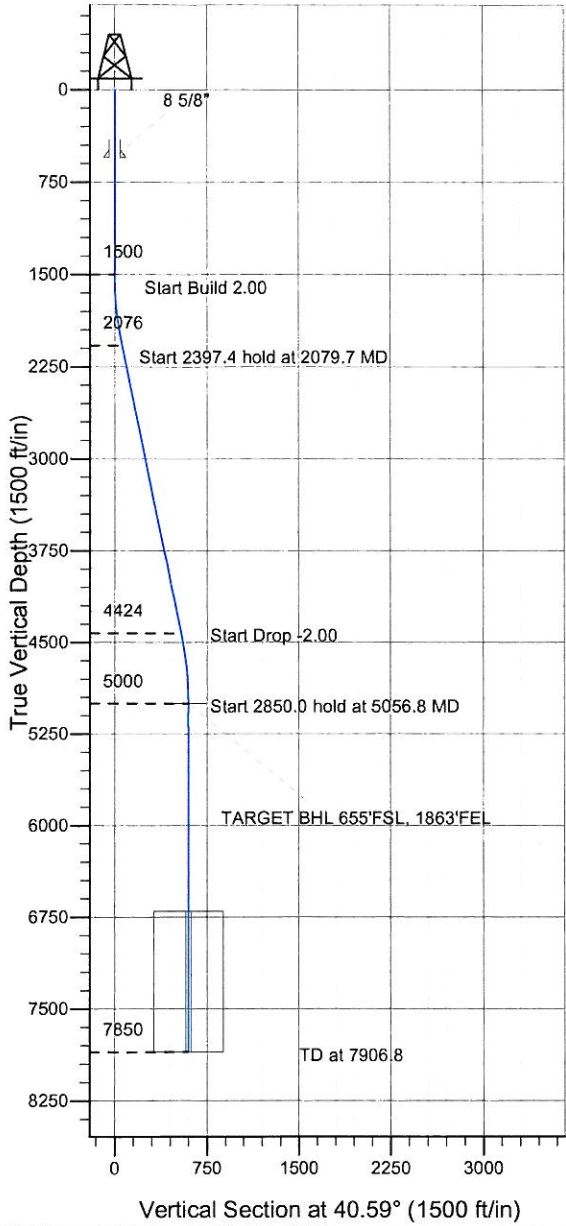
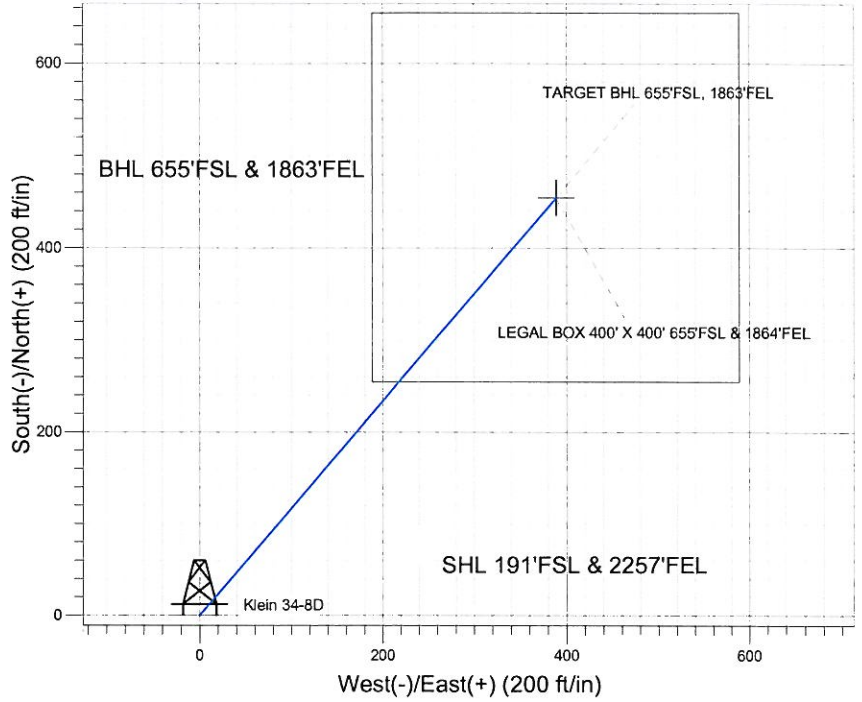


### Well Name: Klein 34-8D

Surface Location: Klein 44-8D Pad Sec.8-T4N-R67W  
 North American Datum 1983 US State Plane 1983 Colorado Northern Zone  
 Ground Elevation: 4794.0  
 +N/-S +E/-W Northing Easting Latitude Longitude Slot  
 0.0 0.0 1360243.68 3163373.99 40.320788 -104.914081  
 Original Well Elev WELL @ 4807.0ft (Original Well Elev)

### Synergy Resources



Klein 44-8D Pad Sec.8-T4N-R67W  
 Klein 34-8D  
 Plan #1 (5-03-11)  
 13:26, May 11 2011



Azimuths to True North  
 Magnetic North: 8.95°  
 Magnetic Field  
 Strength: 53084.0snT  
 Dip Angle: 66.96°  
 Date: 5/11/2011  
 Model: IGRF2010

#### WELLBORE TARGET DETAILS (LAT/LONG)

Name	TVD	+N/-S	+E/-W	Latitude	Longitude	Shape
TARGET BHL 655'FSL, 1863'FEL	5000.0	454.7	389.5	40.322036	-104.912684	Point
LEGAL BOX 400' X 400' 655'FSL & 1864'FEL	6700.0	454.7	388.5	40.322036	-104.912688	Rectangle (Sides: L400.0 W400.0)

#### SECTION DETAILS

Sec	MD	Inc	Azi	TVD	+N/-S	+E/-W	DLeg	TFace	VSec	Target
1	0.0	0.00	0.00	0.0	0.0	0.0	0.00	0.00	0.0	
2	1500.0	0.00	0.00	1500.0	0.0	0.0	0.00	0.00	0.0	
3	2079.7	11.59	40.59	2075.8	44.4	38.0	2.00	40.59	58.5	
4	4477.1	11.59	40.59	4424.2	410.3	351.5	0.00	0.00	540.3	
5	5056.8	0.00	0.00	5000.0	454.7	389.5	2.00	180.00	598.7	TARGET BHL 655'FSL, 1863'FEL
6	7906.8	0.00	0.00	7850.0	454.7	389.5	0.00	0.00	598.7	



## **Directional**

### **Synergy Resources**

**SEC.8-T4N-R67W**

**Klein 44-8D Pad Sec.8-T4N-R67W**

**Klein 34-8D**

**Wellbore #1**

**Plan: Plan #1 (5-03-11)**

### **Standard Planning Report**

**11 May, 2011**

<b>Database:</b>	Landmark	<b>Local Co-ordinate Reference:</b>	Well Klein 34-8D
<b>Company:</b>	Synergy Resources	<b>TVD Reference:</b>	WELL @ 4807.0ft (Original Well Elev)
<b>Project:</b>	SEC.8-T4N-R67W	<b>MD Reference:</b>	WELL @ 4807.0ft (Original Well Elev)
<b>Site:</b>	Klein 44-8D Pad Sec.8-T4N-R67W	<b>North Reference:</b>	True
<b>Well:</b>	Klein 34-8D	<b>Survey Calculation Method:</b>	Minimum Curvature
<b>Wellbore:</b>	Wellbore #1		
<b>Design:</b>	Plan #1 (5-03-11)		

<b>Project</b>	SEC.8-T4N-R67W, Weld County, Colorado		
<b>Map System:</b>	US State Plane 1983	<b>System Datum:</b>	Mean Sea Level
<b>Geo Datum:</b>	North American Datum 1983		Using Well Reference Point
<b>Map Zone:</b>	Colorado Northern Zone		Using geodetic scale factor

<b>Site</b>	Klein 44-8D Pad Sec.8-T4N-R67W				
<b>Site Position:</b>		<b>Northing:</b>	1,360,242.64 ft	<b>Latitude:</b>	40.320784
<b>From:</b>	Lat/Long	<b>Easting:</b>	3,163,433.95 ft	<b>Longitude:</b>	-104.913866
<b>Position Uncertainty:</b>	0.0 ft	<b>Slot Radius:</b>	"	<b>Grid Convergence:</b>	0.38 °

<b>Well</b>	Klein 34-8D					
<b>Well Position</b>	<b>+N/-S</b>	1.4 ft	<b>Northing:</b>	1,360,243.68 ft	<b>Latitude:</b>	40.320788
	<b>+E/-W</b>	-60.0 ft	<b>Easting:</b>	3,163,373.99 ft	<b>Longitude:</b>	-104.914081
<b>Position Uncertainty</b>		0.0 ft	<b>Wellhead Elevation:</b>	ft	<b>Ground Level:</b>	4,794.0 ft

<b>Wellbore</b>	Wellbore #1				
<b>Magnetics</b>	<b>Model Name</b>	<b>Sample Date</b>	<b>Declination (°)</b>	<b>Dip Angle (°)</b>	<b>Field Strength (nT)</b>
	IGRF2010	5/11/2011	8.95	66.97	53,084

<b>Design</b>	Plan #1 (5-03-11)			
<b>Audit Notes:</b>				
<b>Version:</b>	<b>Phase:</b>	PROTOTYPE	<b>Tie On Depth:</b>	0.0
<b>Vertical Section:</b>	<b>Depth From (TVD) (ft)</b>	<b>+N/-S (ft)</b>	<b>+E/-W (ft)</b>	<b>Direction (°)</b>
	0.0	0.0	0.0	40.59

Plan Sections										
Measured Depth (ft)	Inclination (°)	Azimuth (°)	Vertical Depth (ft)	+N/-S (ft)	+E/-W (ft)	Dogleg Rate (°/100ft)	Build Rate (°/100ft)	Turn Rate (°/100ft)	TFO (°)	Target
0.0	0.00	0.00	0.0	0.0	0.0	0.00	0.00	0.00	0.00	
1,500.0	0.00	0.00	1,500.0	0.0	0.0	0.00	0.00	0.00	0.00	
2,079.7	11.59	40.59	2,075.8	44.4	38.0	2.00	2.00	0.00	40.59	
4,477.1	11.59	40.59	4,424.2	410.3	351.5	0.00	0.00	0.00	0.00	
5,056.8	0.00	0.00	5,000.0	454.7	389.5	2.00	-2.00	0.00	180.00	TARGET BHL 655'I
7,906.8	0.00	0.00	7,850.0	454.7	389.5	0.00	0.00	0.00	0.00	

<b>Database:</b>	Landmark	<b>Local Co-ordinate Reference:</b>	Well Klein 34-8D
<b>Company:</b>	Synergy Resources	<b>TVD Reference:</b>	WELL @ 4807.0ft (Original Well Elev)
<b>Project:</b>	SEC.8-T4N-R67W	<b>MD Reference:</b>	WELL @ 4807.0ft (Original Well Elev)
<b>Site:</b>	Klein 44-8D Pad Sec.8-T4N-R67W	<b>North Reference:</b>	True
<b>Well:</b>	Klein 34-8D	<b>Survey Calculation Method:</b>	Minimum Curvature
<b>Wellbore:</b>	Wellbore #1		
<b>Design:</b>	Plan #1 (5-03-11)		

**Planned Survey**

Measured Depth (ft)	Inclination (°)	Azimuth (°)	Vertical Depth (ft)	+N/-S (ft)	+E/-W (ft)	Vertical Section (ft)	Dogleg Rate (°/100ft)	Build Rate (°/100ft)	Turn Rate (°/100ft)
0.0	0.00	0.00	0.0	0.0	0.0	0.0	0.00	0.00	0.00
40.0	0.00	0.00	40.0	0.0	0.0	0.0	0.00	0.00	0.00
80.0	0.00	0.00	80.0	0.0	0.0	0.0	0.00	0.00	0.00
120.0	0.00	0.00	120.0	0.0	0.0	0.0	0.00	0.00	0.00
160.0	0.00	0.00	160.0	0.0	0.0	0.0	0.00	0.00	0.00
200.0	0.00	0.00	200.0	0.0	0.0	0.0	0.00	0.00	0.00
240.0	0.00	0.00	240.0	0.0	0.0	0.0	0.00	0.00	0.00
280.0	0.00	0.00	280.0	0.0	0.0	0.0	0.00	0.00	0.00
320.0	0.00	0.00	320.0	0.0	0.0	0.0	0.00	0.00	0.00
360.0	0.00	0.00	360.0	0.0	0.0	0.0	0.00	0.00	0.00
400.0	0.00	0.00	400.0	0.0	0.0	0.0	0.00	0.00	0.00
440.0	0.00	0.00	440.0	0.0	0.0	0.0	0.00	0.00	0.00
480.0	0.00	0.00	480.0	0.0	0.0	0.0	0.00	0.00	0.00
520.0	0.00	0.00	520.0	0.0	0.0	0.0	0.00	0.00	0.00
550.0	0.00	0.00	550.0	0.0	0.0	0.0	0.00	0.00	0.00
<b>8 5/8"</b>									
560.0	0.00	0.00	560.0	0.0	0.0	0.0	0.00	0.00	0.00
600.0	0.00	0.00	600.0	0.0	0.0	0.0	0.00	0.00	0.00
640.0	0.00	0.00	640.0	0.0	0.0	0.0	0.00	0.00	0.00
680.0	0.00	0.00	680.0	0.0	0.0	0.0	0.00	0.00	0.00
720.0	0.00	0.00	720.0	0.0	0.0	0.0	0.00	0.00	0.00
760.0	0.00	0.00	760.0	0.0	0.0	0.0	0.00	0.00	0.00
800.0	0.00	0.00	800.0	0.0	0.0	0.0	0.00	0.00	0.00
840.0	0.00	0.00	840.0	0.0	0.0	0.0	0.00	0.00	0.00
880.0	0.00	0.00	880.0	0.0	0.0	0.0	0.00	0.00	0.00
920.0	0.00	0.00	920.0	0.0	0.0	0.0	0.00	0.00	0.00
960.0	0.00	0.00	960.0	0.0	0.0	0.0	0.00	0.00	0.00
1,000.0	0.00	0.00	1,000.0	0.0	0.0	0.0	0.00	0.00	0.00
1,040.0	0.00	0.00	1,040.0	0.0	0.0	0.0	0.00	0.00	0.00
1,080.0	0.00	0.00	1,080.0	0.0	0.0	0.0	0.00	0.00	0.00
1,120.0	0.00	0.00	1,120.0	0.0	0.0	0.0	0.00	0.00	0.00
1,160.0	0.00	0.00	1,160.0	0.0	0.0	0.0	0.00	0.00	0.00
1,200.0	0.00	0.00	1,200.0	0.0	0.0	0.0	0.00	0.00	0.00
1,240.0	0.00	0.00	1,240.0	0.0	0.0	0.0	0.00	0.00	0.00
1,280.0	0.00	0.00	1,280.0	0.0	0.0	0.0	0.00	0.00	0.00
1,320.0	0.00	0.00	1,320.0	0.0	0.0	0.0	0.00	0.00	0.00
1,360.0	0.00	0.00	1,360.0	0.0	0.0	0.0	0.00	0.00	0.00
1,400.0	0.00	0.00	1,400.0	0.0	0.0	0.0	0.00	0.00	0.00
1,440.0	0.00	0.00	1,440.0	0.0	0.0	0.0	0.00	0.00	0.00
1,480.0	0.00	0.00	1,480.0	0.0	0.0	0.0	0.00	0.00	0.00
1,500.0	0.00	0.00	1,500.0	0.0	0.0	0.0	0.00	0.00	0.00
1,520.0	0.40	40.59	1,520.0	0.1	0.0	0.1	2.00	2.00	0.00
1,560.0	1.20	40.59	1,560.0	0.5	0.4	0.6	2.00	2.00	0.00
1,600.0	2.00	40.59	1,600.0	1.3	1.1	1.7	2.00	2.00	0.00
1,640.0	2.80	40.59	1,639.9	2.6	2.2	3.4	2.00	2.00	0.00
1,680.0	3.60	40.59	1,679.9	4.3	3.7	5.7	2.00	2.00	0.00
1,720.0	4.40	40.59	1,719.8	6.4	5.5	8.4	2.00	2.00	0.00
1,760.0	5.20	40.59	1,759.6	9.0	7.7	11.8	2.00	2.00	0.00
1,800.0	6.00	40.59	1,799.5	11.9	10.2	15.7	2.00	2.00	0.00
1,840.0	6.80	40.59	1,839.2	15.3	13.1	20.2	2.00	2.00	0.00
1,880.0	7.60	40.59	1,878.9	19.1	16.4	25.2	2.00	2.00	0.00
1,920.0	8.40	40.59	1,918.5	23.3	20.0	30.7	2.00	2.00	0.00
1,960.0	9.20	40.59	1,958.0	28.0	24.0	36.9	2.00	2.00	0.00
2,000.0	10.00	40.59	1,997.5	33.1	28.3	43.5	2.00	2.00	0.00

**Database:** Landmark  
**Company:** Synergy Resources  
**Project:** SEC.8-T4N-R67W  
**Site:** Klein 44-8D Pad Sec.8-T4N-R67W  
**Well:** Klein 34-8D  
**Wellbore:** Wellbore #1  
**Design:** Plan #1 (5-03-11)

**Local Co-ordinate Reference:** Well Klein 34-8D  
**TVD Reference:** WELL @ 4807.0ft (Original Well Elev)  
**MD Reference:** WELL @ 4807.0ft (Original Well Elev)  
**North Reference:** True  
**Survey Calculation Method:** Minimum Curvature

**Planned Survey**

Measured Depth (ft)	Inclination (°)	Azimuth (°)	Vertical Depth (ft)	+N/-S (ft)	+E/-W (ft)	Vertical Section (ft)	Dogleg Rate (°/100ft)	Build Rate (°/100ft)	Turn Rate (°/100ft)
2,040.0	10.80	40.59	2,036.8	38.5	33.0	50.7	2.00	2.00	0.00
2,079.7	11.59	40.59	2,075.8	44.4	38.0	58.5	2.00	2.00	0.00
2,080.0	11.59	40.59	2,076.0	44.4	38.1	58.5	0.00	0.00	0.00
2,120.0	11.59	40.59	2,115.2	50.5	43.3	66.6	0.00	0.00	0.00
2,160.0	11.59	40.59	2,154.4	56.6	48.5	74.6	0.00	0.00	0.00
2,200.0	11.59	40.59	2,193.6	62.7	53.8	82.6	0.00	0.00	0.00
2,240.0	11.59	40.59	2,232.8	68.9	59.0	90.7	0.00	0.00	0.00
2,280.0	11.59	40.59	2,272.0	75.0	64.2	98.7	0.00	0.00	0.00
2,320.0	11.59	40.59	2,311.1	81.1	69.5	106.7	0.00	0.00	0.00
2,360.0	11.59	40.59	2,350.3	87.2	74.7	114.8	0.00	0.00	0.00
2,400.0	11.59	40.59	2,389.5	93.3	79.9	122.8	0.00	0.00	0.00
2,440.0	11.59	40.59	2,428.7	99.4	85.1	130.9	0.00	0.00	0.00
2,480.0	11.59	40.59	2,467.9	105.5	90.4	138.9	0.00	0.00	0.00
2,520.0	11.59	40.59	2,507.1	111.6	95.6	146.9	0.00	0.00	0.00
2,560.0	11.59	40.59	2,546.3	117.7	100.8	155.0	0.00	0.00	0.00
2,600.0	11.59	40.59	2,585.4	123.8	106.1	163.0	0.00	0.00	0.00
2,640.0	11.59	40.59	2,624.6	129.9	111.3	171.1	0.00	0.00	0.00
2,680.0	11.59	40.59	2,663.8	136.0	116.5	179.1	0.00	0.00	0.00
2,720.0	11.59	40.59	2,703.0	142.1	121.8	187.1	0.00	0.00	0.00
2,760.0	11.59	40.59	2,742.2	148.2	127.0	195.2	0.00	0.00	0.00
2,800.0	11.59	40.59	2,781.4	154.3	132.2	203.2	0.00	0.00	0.00
2,840.0	11.59	40.59	2,820.5	160.4	137.4	211.3	0.00	0.00	0.00
2,880.0	11.59	40.59	2,859.7	166.5	142.7	219.3	0.00	0.00	0.00
2,920.0	11.59	40.59	2,898.9	172.6	147.9	227.3	0.00	0.00	0.00
2,960.0	11.59	40.59	2,938.1	178.7	153.1	235.4	0.00	0.00	0.00
3,000.0	11.59	40.59	2,977.3	184.8	158.4	243.4	0.00	0.00	0.00
3,040.0	11.59	40.59	3,016.5	190.9	163.6	251.4	0.00	0.00	0.00
3,080.0	11.59	40.59	3,055.6	197.1	168.8	259.5	0.00	0.00	0.00
3,120.0	11.59	40.59	3,094.8	203.2	174.1	267.5	0.00	0.00	0.00
3,160.0	11.59	40.59	3,134.0	209.3	179.3	275.6	0.00	0.00	0.00
3,200.0	11.59	40.59	3,173.2	215.4	184.5	283.6	0.00	0.00	0.00
3,240.0	11.59	40.59	3,212.4	221.5	189.7	291.6	0.00	0.00	0.00
3,280.0	11.59	40.59	3,251.6	227.6	195.0	299.7	0.00	0.00	0.00
3,320.0	11.59	40.59	3,290.7	233.7	200.2	307.7	0.00	0.00	0.00
3,360.0	11.59	40.59	3,329.9	239.8	205.4	315.8	0.00	0.00	0.00
3,400.0	11.59	40.59	3,369.1	245.9	210.7	323.8	0.00	0.00	0.00
3,440.0	11.59	40.59	3,408.3	252.0	215.9	331.8	0.00	0.00	0.00
3,480.0	11.59	40.59	3,447.5	258.1	221.1	339.9	0.00	0.00	0.00
3,520.0	11.59	40.59	3,486.7	264.2	226.4	347.9	0.00	0.00	0.00
3,560.0	11.59	40.59	3,525.8	270.3	231.6	356.0	0.00	0.00	0.00
3,600.0	11.59	40.59	3,565.0	276.4	236.8	364.0	0.00	0.00	0.00
3,640.0	11.59	40.59	3,604.2	282.5	242.1	372.0	0.00	0.00	0.00
3,680.0	11.59	40.59	3,643.4	288.6	247.3	380.1	0.00	0.00	0.00
3,720.0	11.59	40.59	3,682.6	294.7	252.5	388.1	0.00	0.00	0.00
3,760.0	11.59	40.59	3,721.8	300.8	257.7	396.1	0.00	0.00	0.00
3,800.0	11.59	40.59	3,761.0	306.9	263.0	404.2	0.00	0.00	0.00
3,840.0	11.59	40.59	3,800.1	313.0	268.2	412.2	0.00	0.00	0.00
3,880.0	11.59	40.59	3,839.3	319.2	273.4	420.3	0.00	0.00	0.00
3,920.0	11.59	40.59	3,878.5	325.3	278.7	428.3	0.00	0.00	0.00
3,960.0	11.59	40.59	3,917.7	331.4	283.9	436.3	0.00	0.00	0.00
4,000.0	11.59	40.59	3,956.9	337.5	289.1	444.4	0.00	0.00	0.00
4,040.0	11.59	40.59	3,996.1	343.6	294.4	452.4	0.00	0.00	0.00
4,080.0	11.59	40.59	4,035.2	349.7	299.6	460.5	0.00	0.00	0.00
4,120.0	11.59	40.59	4,074.4	355.8	304.8	468.5	0.00	0.00	0.00

<b>Database:</b>	Landmark	<b>Local Co-ordinate Reference:</b>	Well Klein 34-8D
<b>Company:</b>	Synergy Resources	<b>TVD Reference:</b>	WELL @ 4807.0ft (Original Well Elev)
<b>Project:</b>	SEC.8-T4N-R67W	<b>MD Reference:</b>	WELL @ 4807.0ft (Original Well Elev)
<b>Site:</b>	Klein 44-8D Pad Sec.8-T4N-R67W	<b>North Reference:</b>	True
<b>Well:</b>	Klein 34-8D	<b>Survey Calculation Method:</b>	Minimum Curvature
<b>Wellbore:</b>	Wellbore #1		
<b>Design:</b>	Plan #1 (5-03-11)		

**Planned Survey**

Measured Depth (ft)	Inclination (°)	Azimuth (°)	Vertical Depth (ft)	+N/-S (ft)	+E/-W (ft)	Vertical Section (ft)	Dogleg Rate (°/100ft)	Build Rate (°/100ft)	Turn Rate (°/100ft)
4,160.0	11.59	40.59	4,113.6	361.9	310.0	476.5	0.00	0.00	0.00
4,200.0	11.59	40.59	4,152.8	368.0	315.3	484.6	0.00	0.00	0.00
4,240.0	11.59	40.59	4,192.0	374.1	320.5	492.6	0.00	0.00	0.00
4,280.0	11.59	40.59	4,231.2	380.2	325.7	500.7	0.00	0.00	0.00
4,320.0	11.59	40.59	4,270.3	386.3	331.0	508.7	0.00	0.00	0.00
4,360.0	11.59	40.59	4,309.5	392.4	336.2	516.7	0.00	0.00	0.00
4,400.0	11.59	40.59	4,348.7	398.5	341.4	524.8	0.00	0.00	0.00
4,440.0	11.59	40.59	4,387.9	404.6	346.7	532.8	0.00	0.00	0.00
4,477.1	11.59	40.59	4,424.2	410.3	351.5	540.3	0.00	0.00	0.00
4,480.0	11.54	40.59	4,427.1	410.7	351.9	540.9	2.00	-2.00	0.00
4,520.0	10.74	40.59	4,466.3	416.6	356.9	548.6	2.00	-2.00	0.00
4,560.0	9.94	40.59	4,505.7	422.0	361.6	555.8	2.00	-2.00	0.00
4,600.0	9.14	40.59	4,545.1	427.1	365.9	562.4	2.00	-2.00	0.00
4,640.0	8.34	40.59	4,584.7	431.7	369.9	568.5	2.00	-2.00	0.00
4,680.0	7.54	40.59	4,624.3	435.9	373.4	574.0	2.00	-2.00	0.00
4,720.0	6.74	40.59	4,664.0	439.7	376.7	578.9	2.00	-2.00	0.00
4,760.0	5.94	40.59	4,703.7	443.0	379.5	583.4	2.00	-2.00	0.00
4,800.0	5.14	40.59	4,743.5	445.9	382.1	587.2	2.00	-2.00	0.00
4,840.0	4.34	40.59	4,783.4	448.4	384.2	590.5	2.00	-2.00	0.00
4,880.0	3.54	40.59	4,823.3	450.5	386.0	593.3	2.00	-2.00	0.00
4,920.0	2.74	40.59	4,863.2	452.2	387.4	595.5	2.00	-2.00	0.00
4,960.0	1.94	40.59	4,903.2	453.4	388.5	597.1	2.00	-2.00	0.00
5,000.0	1.14	40.59	4,943.2	454.2	389.2	598.2	2.00	-2.00	0.00
5,040.0	0.34	40.59	4,983.2	454.6	389.5	598.7	2.00	-2.00	0.00
5,056.8	0.00	0.00	5,000.0	454.7	389.5	598.7	2.00	-2.00	0.00
<b>TARGET BHL 655'FSL, 1863'FEL</b>									
5,080.0	0.00	0.00	5,023.2	454.7	389.5	598.7	0.00	0.00	0.00
5,120.0	0.00	0.00	5,063.2	454.7	389.5	598.7	0.00	0.00	0.00
5,160.0	0.00	0.00	5,103.2	454.7	389.5	598.7	0.00	0.00	0.00
5,200.0	0.00	0.00	5,143.2	454.7	389.5	598.7	0.00	0.00	0.00
5,240.0	0.00	0.00	5,183.2	454.7	389.5	598.7	0.00	0.00	0.00
5,280.0	0.00	0.00	5,223.2	454.7	389.5	598.7	0.00	0.00	0.00
5,320.0	0.00	0.00	5,263.2	454.7	389.5	598.7	0.00	0.00	0.00
5,360.0	0.00	0.00	5,303.2	454.7	389.5	598.7	0.00	0.00	0.00
5,400.0	0.00	0.00	5,343.2	454.7	389.5	598.7	0.00	0.00	0.00
5,440.0	0.00	0.00	5,383.2	454.7	389.5	598.7	0.00	0.00	0.00
5,480.0	0.00	0.00	5,423.2	454.7	389.5	598.7	0.00	0.00	0.00
5,520.0	0.00	0.00	5,463.2	454.7	389.5	598.7	0.00	0.00	0.00
5,560.0	0.00	0.00	5,503.2	454.7	389.5	598.7	0.00	0.00	0.00
5,600.0	0.00	0.00	5,543.2	454.7	389.5	598.7	0.00	0.00	0.00
5,640.0	0.00	0.00	5,583.2	454.7	389.5	598.7	0.00	0.00	0.00
5,680.0	0.00	0.00	5,623.2	454.7	389.5	598.7	0.00	0.00	0.00
5,720.0	0.00	0.00	5,663.2	454.7	389.5	598.7	0.00	0.00	0.00
5,760.0	0.00	0.00	5,703.2	454.7	389.5	598.7	0.00	0.00	0.00
5,800.0	0.00	0.00	5,743.2	454.7	389.5	598.7	0.00	0.00	0.00
5,840.0	0.00	0.00	5,783.2	454.7	389.5	598.7	0.00	0.00	0.00
5,880.0	0.00	0.00	5,823.2	454.7	389.5	598.7	0.00	0.00	0.00
5,920.0	0.00	0.00	5,863.2	454.7	389.5	598.7	0.00	0.00	0.00
5,960.0	0.00	0.00	5,903.2	454.7	389.5	598.7	0.00	0.00	0.00
6,000.0	0.00	0.00	5,943.2	454.7	389.5	598.7	0.00	0.00	0.00
6,040.0	0.00	0.00	5,983.2	454.7	389.5	598.7	0.00	0.00	0.00
6,080.0	0.00	0.00	6,023.2	454.7	389.5	598.7	0.00	0.00	0.00
6,120.0	0.00	0.00	6,063.2	454.7	389.5	598.7	0.00	0.00	0.00
6,160.0	0.00	0.00	6,103.2	454.7	389.5	598.7	0.00	0.00	0.00

<b>Database:</b>	Landmark	<b>Local Co-ordinate Reference:</b>	Well Klein 34-8D
<b>Company:</b>	Synergy Resources	<b>TVD Reference:</b>	WELL @ 4807.0ft (Original Well Elev)
<b>Project:</b>	SEC. 8-T4N-R67W	<b>MD Reference:</b>	WELL @ 4807.0ft (Original Well Elev)
<b>Site:</b>	Klein 44-8D Pad Sec.8-T4N-R67W	<b>North Reference:</b>	True
<b>Well:</b>	Klein 34-8D	<b>Survey Calculation Method:</b>	Minimum Curvature
<b>Wellbore:</b>	Wellbore #1		
<b>Design:</b>	Plan #1 (5-03-11)		

**Planned Survey**

Measured Depth (ft)	Inclination (°)	Azimuth (°)	Vertical Depth (ft)	+N/-S (ft)	+E/-W (ft)	Vertical Section (ft)	Dogleg Rate (°/100ft)	Build Rate (°/100ft)	Turn Rate (°/100ft)
6,200.0	0.00	0.00	6,143.2	454.7	389.5	598.7	0.00	0.00	0.00
6,240.0	0.00	0.00	6,183.2	454.7	389.5	598.7	0.00	0.00	0.00
6,280.0	0.00	0.00	6,223.2	454.7	389.5	598.7	0.00	0.00	0.00
6,320.0	0.00	0.00	6,263.2	454.7	389.5	598.7	0.00	0.00	0.00
6,360.0	0.00	0.00	6,303.2	454.7	389.5	598.7	0.00	0.00	0.00
6,400.0	0.00	0.00	6,343.2	454.7	389.5	598.7	0.00	0.00	0.00
6,440.0	0.00	0.00	6,383.2	454.7	389.5	598.7	0.00	0.00	0.00
6,480.0	0.00	0.00	6,423.2	454.7	389.5	598.7	0.00	0.00	0.00
6,520.0	0.00	0.00	6,463.2	454.7	389.5	598.7	0.00	0.00	0.00
6,560.0	0.00	0.00	6,503.2	454.7	389.5	598.7	0.00	0.00	0.00
6,600.0	0.00	0.00	6,543.2	454.7	389.5	598.7	0.00	0.00	0.00
6,640.0	0.00	0.00	6,583.2	454.7	389.5	598.7	0.00	0.00	0.00
6,680.0	0.00	0.00	6,623.2	454.7	389.5	598.7	0.00	0.00	0.00
6,720.0	0.00	0.00	6,663.2	454.7	389.5	598.7	0.00	0.00	0.00
6,756.8	0.00	0.00	6,700.0	454.7	389.5	598.7	0.00	0.00	0.00
<b>LEGAL BOX 400' X 400' 655'FSL &amp; 1864'FEL</b>									
6,760.0	0.00	0.00	6,703.2	454.7	389.5	598.7	0.00	0.00	0.00
6,800.0	0.00	0.00	6,743.2	454.7	389.5	598.7	0.00	0.00	0.00
6,840.0	0.00	0.00	6,783.2	454.7	389.5	598.7	0.00	0.00	0.00
6,880.0	0.00	0.00	6,823.2	454.7	389.5	598.7	0.00	0.00	0.00
6,920.0	0.00	0.00	6,863.2	454.7	389.5	598.7	0.00	0.00	0.00
6,960.0	0.00	0.00	6,903.2	454.7	389.5	598.7	0.00	0.00	0.00
7,000.0	0.00	0.00	6,943.2	454.7	389.5	598.7	0.00	0.00	0.00
7,040.0	0.00	0.00	6,983.2	454.7	389.5	598.7	0.00	0.00	0.00
7,080.0	0.00	0.00	7,023.2	454.7	389.5	598.7	0.00	0.00	0.00
7,120.0	0.00	0.00	7,063.2	454.7	389.5	598.7	0.00	0.00	0.00
7,160.0	0.00	0.00	7,103.2	454.7	389.5	598.7	0.00	0.00	0.00
7,200.0	0.00	0.00	7,143.2	454.7	389.5	598.7	0.00	0.00	0.00
7,240.0	0.00	0.00	7,183.2	454.7	389.5	598.7	0.00	0.00	0.00
7,280.0	0.00	0.00	7,223.2	454.7	389.5	598.7	0.00	0.00	0.00
7,320.0	0.00	0.00	7,263.2	454.7	389.5	598.7	0.00	0.00	0.00
7,360.0	0.00	0.00	7,303.2	454.7	389.5	598.7	0.00	0.00	0.00
7,400.0	0.00	0.00	7,343.2	454.7	389.5	598.7	0.00	0.00	0.00
7,440.0	0.00	0.00	7,383.2	454.7	389.5	598.7	0.00	0.00	0.00
7,480.0	0.00	0.00	7,423.2	454.7	389.5	598.7	0.00	0.00	0.00
7,520.0	0.00	0.00	7,463.2	454.7	389.5	598.7	0.00	0.00	0.00
7,560.0	0.00	0.00	7,503.2	454.7	389.5	598.7	0.00	0.00	0.00
7,600.0	0.00	0.00	7,543.2	454.7	389.5	598.7	0.00	0.00	0.00
7,640.0	0.00	0.00	7,583.2	454.7	389.5	598.7	0.00	0.00	0.00
7,680.0	0.00	0.00	7,623.2	454.7	389.5	598.7	0.00	0.00	0.00
7,720.0	0.00	0.00	7,663.2	454.7	389.5	598.7	0.00	0.00	0.00
7,760.0	0.00	0.00	7,703.2	454.7	389.5	598.7	0.00	0.00	0.00
7,800.0	0.00	0.00	7,743.2	454.7	389.5	598.7	0.00	0.00	0.00
7,840.0	0.00	0.00	7,783.2	454.7	389.5	598.7	0.00	0.00	0.00
7,880.0	0.00	0.00	7,823.2	454.7	389.5	598.7	0.00	0.00	0.00
7,906.8	0.00	0.00	7,850.0	454.7	389.5	598.7	0.00	0.00	0.00

<b>Database:</b>	Landmark	<b>Local Co-ordinate Reference:</b>	Well Klein 34-8D
<b>Company:</b>	Synergy Resources	<b>TVD Reference:</b>	WELL @ 4807.0ft (Original Well Elev)
<b>Project:</b>	SEC.8-T4N-R67W	<b>MD Reference:</b>	WELL @ 4807.0ft (Original Well Elev)
<b>Site:</b>	Klein 44-8D Pad Sec.8-T4N-R67W	<b>North Reference:</b>	True
<b>Well:</b>	Klein 34-8D	<b>Survey Calculation Method:</b>	Minimum Curvature
<b>Wellbore:</b>	Wellbore #1		
<b>Design:</b>	Plan #1 (5-03-11)		

**Targets**

Target Name	Dip Angle	Dip Dir.	TVD	+N/-S	+E/-W	Northing	Easting	Latitude	Longitude
- hit/miss target	(°)	(°)	(ft)	(ft)	(ft)	(ft)	(ft)		
- Shape									
TARGET BHL 655'FS	0.00	0.00	5,000.0	454.7	389.5	1,360,700.90	3,163,760.50	40.322036	-104.912684
- plan hits target center									
- Point									
LEGAL BOX 400' X 400'	0.00	0.00	6,700.0	454.7	388.5	1,360,700.92	3,163,759.46	40.322036	-104.912688
- plan misses target center by 1.0ft at 6756.8ft MD (6700.0 TVD, 454.7 N, 389.5 E)									
- Rectangle (sides W400.0 H400.0 D1,150.0)									

**Casing Points**

Measured Depth	Vertical Depth	Name	Casing Diameter	Hole Diameter
(ft)	(ft)		(")	(")
550.0	550.0	8 5/8"	8-5/8	12-1/4





## **Directional**

### **Synergy Resources**

**SEC.8-T4N-R67W**

**Klein 44-8D Pad Sec.8-T4N-R67W**

**Klein 34-8D**

**Wellbore #1**

**Plan #1 (5-03-11)**

## **Anticollision Report**

**12 May, 2011**

<b>Company:</b>	Synergy Resources	<b>Local Co-ordinate Reference:</b>	Well Klein 34-8D
<b>Project:</b>	SEC.8-T4N-R67W	<b>TVD Reference:</b>	WELL @ 4807.0ft (Original Well Elev)
<b>Reference Site:</b>	Klein 44-8D Pad Sec.8-T4N-R67W	<b>MD Reference:</b>	WELL @ 4807.0ft (Original Well Elev)
<b>Site Error:</b>	0.0ft	<b>North Reference:</b>	True
<b>Reference Well:</b>	Klein 34-8D	<b>Survey Calculation Method:</b>	Minimum Curvature
<b>Well Error:</b>	0.0ft	<b>Output errors are at</b>	2.00 sigma
<b>Reference Wellbore</b>	Wellbore #1	<b>Database:</b>	Landmark
<b>Reference Design:</b>	Plan #1 (5-03-11)	<b>Offset TVD Reference:</b>	Offset Datum

<b>Reference</b>	Plan #1 (5-03-11)		
<b>Filter type:</b>	NO GLOBAL FILTER: Using user defined selection & filtering criteria		
<b>Interpolation Method:</b>	Stations	<b>Error Model:</b>	ISCWSA
<b>Depth Range:</b>	Unlimited	<b>Scan Method:</b>	Closest Approach 3D
<b>Results Limited by:</b>	Maximum center-center distance of 10,000.0ft	<b>Error Surface:</b>	Elliptical Conic
<b>Warning Levels Evaluated at:</b>	2.00 Sigma		

<b>Survey Tool Program</b>	Date 5/12/2011	
<b>From (ft)</b>	<b>To (ft)</b>	<b>Survey (Wellbore)</b>
0.0	7,906.8	Plan #1 (5-03-11) (Wellbore #1)
		<b>Tool Name</b>
		MWD
		<b>Description</b>
		MWD - Standard

<b>Summary</b>						
<b>Site Name</b>	<b>Reference Measured Depth (ft)</b>	<b>Offset Measured Depth (ft)</b>	<b>Distance Between Centres (ft)</b>	<b>Distance Between Ellipses (ft)</b>	<b>Separation Factor</b>	<b>Warning</b>
Offset Well - Wellbore - Design						
Klein 44-8D Pad Sec.8-T4N-R67W						
Klein 8DD - Wellbore #1 - Plan #1 (5-03-11)	700.0	699.0	20.0	17.1	6.841	CC, ES
Klein 8DD - Wellbore #1 - Plan #1 (5-03-11)	800.0	798.5	21.1	17.7	6.272	SF
Klein 8SD - Wellbore #1 - Plan #1 (5-03-11)	510.2	510.4	18.5	16.5	8.938	CC, ES
Klein 8SD - Wellbore #1 - Plan #1 (5-03-11)	600.0	599.7	20.2	17.7	8.101	SF

<b>Offset Design</b> Klein 44-8D Pad Sec.8-T4N-R67W - Klein 8DD - Wellbore #1 - Plan #1 (5-03-11)													<b>Offset Site Error:</b>	0.0 ft
Survey Program: 0-MWD													<b>Offset Well Error:</b>	0.0 ft
<b>Reference</b>	<b>Offset</b>		<b>Semi Major Axis</b>		<b>Distance</b>								<b>Warning</b>	
<b>Measured Depth (ft)</b>	<b>Vertical Depth (ft)</b>	<b>Measured Depth (ft)</b>	<b>Vertical Depth (ft)</b>	<b>Reference (ft)</b>	<b>Offset (ft)</b>	<b>Highside Toolface (°)</b>	<b>Offset Wellbore Centre</b>		<b>Between Centres (ft)</b>	<b>Between Ellipses (ft)</b>	<b>Minimum Separation (ft)</b>	<b>Separation Factor</b>		
							<b>+N/-S (ft)</b>	<b>+E/-W (ft)</b>						
0.0	0.0	0.0	0.0	0.0	0.0	92.09	-0.7	20.0	20.0					
100.0	100.0	99.0	99.0	0.1	0.1	92.09	-0.7	20.0	20.0	19.8	0.22	89.317		
200.0	200.0	199.0	199.0	0.3	0.3	92.09	-0.7	20.0	20.0	19.3	0.67	29.723		
300.0	300.0	299.0	299.0	0.6	0.6	92.09	-0.7	20.0	20.0	18.9	1.12	17.810		
400.0	400.0	399.0	399.0	0.8	0.8	92.09	-0.7	20.0	20.0	18.4	1.57	12.714		
500.0	500.0	499.0	499.0	1.0	1.0	92.09	-0.7	20.0	20.0	18.0	2.02	9.886		
600.0	600.0	599.0	599.0	1.2	1.2	92.09	-0.7	20.0	20.0	17.5	2.47	8.087		
700.0	700.0	699.0	699.0	1.5	1.5	92.09	-0.7	20.0	20.0	17.1	2.92	6.841	CC, ES	
800.0	800.0	798.5	798.5	1.7	1.7	88.56	0.5	21.1	21.1	17.7	3.37	6.272	SF	
900.0	900.0	897.8	897.6	1.9	1.9	79.96	4.3	24.5	24.9	21.1	3.81	6.544		
1,000.0	1,000.0	996.6	996.1	2.1	2.1	70.57	10.7	30.2	32.2	27.9	4.26	7.549		
1,100.0	1,100.0	1,094.7	1,093.5	2.4	2.4	62.99	19.4	38.1	43.2	38.4	4.72	9.141		
1,200.0	1,200.0	1,191.9	1,189.5	2.6	2.7	57.60	30.6	48.2	57.8	52.6	5.19	11.143		
1,300.0	1,300.0	1,287.9	1,283.8	2.8	3.0	53.88	43.9	60.2	76.1	70.4	5.67	13.407		
1,400.0	1,400.0	1,382.7	1,376.2	3.0	3.3	51.30	59.4	74.2	97.7	91.5	6.18	15.821		
1,500.0	1,500.0	1,475.9	1,466.4	3.3	3.7	49.47	76.8	89.9	122.6	115.9	6.70	18.305		
1,600.0	1,600.0	1,567.9	1,554.7	3.5	4.1	7.55	96.2	107.3	149.1	142.1	7.00	21.290		
1,700.0	1,699.8	1,660.3	1,642.4	3.7	4.6	6.65	117.7	126.7	175.3	167.9	7.46	23.502		
1,800.0	1,799.5	1,756.1	1,732.9	3.9	5.2	6.03	141.1	147.8	199.8	191.9	7.93	25.212		
1,900.0	1,898.7	1,853.9	1,825.2	4.2	5.8	5.62	165.0	169.3	220.9	212.5	8.40	26.305		
2,000.0	1,997.5	1,952.3	1,918.1	4.4	6.4	5.37	189.1	191.0	238.6	229.8	8.88	26.882		
2,079.7	2,075.7	2,031.1	1,992.6	4.6	6.9	5.25	208.3	208.4	250.3	241.0	9.26	27.023		
2,100.0	2,095.6	2,051.2	2,011.6	4.7	7.0	5.23	213.3	212.8	253.0	243.6	9.37	27.004		

CC - Min centre to center distance or convergent point, SF - min separation factor, ES - min ellipse separation

**Company:** Synergy Resources  
**Project:** SEC.8-T4N-R67W  
**Reference Site:** Klein 44-8D Pad Sec.8-T4N-R67W  
**Site Error:** 0.0ft  
**Reference Well:** Klein 34-8D  
**Well Error:** 0.0ft  
**Reference Wellbore:** Wellbore #1  
**Reference Design:** Plan #1 (5-03-11)

**Local Co-ordinate Reference:** Well Klein 34-8D  
**TVD Reference:** WELL @ 4807.0ft (Original Well Elev)  
**MD Reference:** WELL @ 4807.0ft (Original Well Elev)  
**North Reference:** True  
**Survey Calculation Method:** Minimum Curvature  
**Output errors are at:** 2.00 sigma  
**Database:** Landmark  
**Offset TVD Reference:** Offset Datum

Offset Design Klein 44-8D Pad Sec.8-T4N-R67W - Klein 8DD - Wellbore #1 - Plan #1 (5-03-11)													Offset Site Error:	0.0 ft
Survey Program: 0-MWD													Offset Well Error:	0.0 ft
Reference		Offset		Semi Major Axis			Distance		Minimum Separation		Warning			
Measured Depth (ft)	Vertical Depth (ft)	Measured Depth (ft)	Vertical Depth (ft)	Reference (ft)	Offset (ft)	Highside Toolface (°)	Offset Wellbore Centre +N/-S (ft)	+E/-W (ft)	Between Centres (ft)	Between Ellipses (ft)	Separation (ft)	Factor		
2,200.0	2,193.6	2,150.4	2,105.2	5.0	7.6	5.15	237.5	234.6	266.2	256.3	9.89	26.909		
2,300.0	2,291.6	2,249.5	2,198.8	5.3	8.2	5.07	261.7	256.5	279.5	269.1	10.43	26.807		
2,400.0	2,389.5	2,348.6	2,292.4	5.7	8.9	5.00	285.9	278.3	292.8	281.8	10.96	26.701		
2,500.0	2,487.5	2,447.7	2,386.0	6.0	9.5	4.94	310.1	300.1	306.0	294.5	11.51	26.594		
2,600.0	2,585.4	2,546.8	2,479.6	6.4	10.2	4.88	334.4	322.0	319.3	307.2	12.05	26.488		
2,700.0	2,683.4	2,645.9	2,573.2	6.8	10.8	4.83	358.6	343.8	332.5	319.9	12.60	26.384		
2,800.0	2,781.4	2,745.1	2,666.8	7.2	11.4	4.78	382.8	365.6	345.8	332.6	13.16	26.282		
2,900.0	2,879.3	2,844.2	2,760.4	7.5	12.1	4.74	407.0	387.4	359.0	345.3	13.71	26.184		
3,000.0	2,977.3	2,943.3	2,854.0	7.9	12.7	4.70	431.2	409.3	372.3	358.0	14.27	26.088		
3,100.0	3,075.2	3,042.4	2,947.6	8.3	13.4	4.66	455.5	431.1	385.6	370.7	14.83	25.996		
3,200.0	3,173.2	3,141.5	3,041.2	8.7	14.0	4.62	479.7	452.9	398.8	383.4	15.39	25.908		
3,300.0	3,271.2	3,240.6	3,134.8	9.1	14.7	4.59	503.9	474.8	412.1	396.1	15.96	25.823		
3,400.0	3,369.1	3,339.8	3,228.4	9.5	15.3	4.56	528.1	496.6	425.4	408.8	16.52	25.741		
3,500.0	3,467.1	3,438.9	3,322.0	10.0	16.0	4.53	552.3	518.4	438.6	421.5	17.09	25.663		
3,600.0	3,565.0	3,538.0	3,415.6	10.4	16.6	4.50	576.6	540.2	451.9	434.2	17.66	25.588		
3,700.0	3,663.0	3,637.1	3,509.2	10.8	17.3	4.47	600.8	562.1	465.1	446.9	18.23	25.516		
3,800.0	3,761.0	3,736.2	3,602.8	11.2	18.0	4.45	625.0	583.9	478.4	459.6	18.80	25.448		
3,900.0	3,858.9	3,833.3	3,696.4	11.6	18.6	4.42	649.2	605.7	491.7	472.3	19.37	25.381		
4,000.0	3,956.9	3,934.5	3,790.0	12.0	19.3	4.40	673.5	627.6	504.9	485.0	19.94	25.318		
4,100.0	4,054.8	4,033.6	3,883.6	12.5	19.9	4.38	697.7	649.4	518.2	497.7	20.52	25.257		
4,200.0	4,152.8	4,132.7	3,977.2	12.9	20.6	4.36	721.9	671.2	531.4	510.3	21.09	25.199		
4,300.0	4,250.8	4,231.8	4,070.8	13.3	21.2	4.34	746.1	693.0	544.7	523.0	21.66	25.143		
4,400.0	4,348.7	4,330.9	4,164.4	13.7	21.9	4.32	770.3	714.9	558.0	535.7	22.24	25.089		
4,477.1	4,424.3	4,407.4	4,236.6	14.0	22.4	4.31	789.0	731.7	568.2	545.5	22.68	25.049		
4,500.0	4,446.7	4,430.0	4,258.0	14.1	22.5	4.31	794.6	736.7	571.3	548.5	22.81	25.049		
4,600.0	4,545.1	4,528.8	4,351.2	14.4	23.2	4.30	818.7	758.4	587.1	563.8	23.31	25.191		
4,700.0	4,644.1	4,626.9	4,443.9	14.7	23.9	4.27	842.7	780.1	606.3	582.5	23.76	25.512		
4,800.0	4,743.5	4,724.3	4,535.9	15.0	24.5	4.22	866.5	801.5	628.9	604.7	24.18	26.004		
4,900.0	4,843.3	4,820.9	4,627.1	15.2	25.1	4.17	890.1	822.8	654.9	630.3	24.56	26.662		
5,000.0	4,943.2	4,916.5	4,717.3	15.3	25.8	4.10	913.4	843.8	684.2	659.3	24.90	27.481		
5,056.8	5,000.0	4,970.3	4,768.2	15.4	26.1	4.05	926.6	855.7	702.3	677.3	25.07	28.017		
5,100.0	5,043.2	5,011.1	4,806.7	15.5	26.4	4.00	936.5	864.7	716.5	691.3	25.27	28.353		
5,200.0	5,143.2	5,105.5	4,895.9	15.6	27.0	3.95	959.6	885.5	749.4	723.6	25.76	29.089		
5,300.0	5,243.2	5,210.9	4,995.4	15.8	27.7	3.90	985.2	908.5	782.1	755.8	26.28	29.764		
5,400.0	5,343.2	5,343.2	5,122.0	15.9	28.3	3.85	1,014.1	934.5	811.4	784.6	26.82	30.259		
5,500.0	5,443.2	5,479.2	5,253.6	16.1	28.9	3.80	1,039.2	957.1	836.3	808.9	27.35	30.581		
5,600.0	5,543.2	5,618.2	5,389.7	16.3	29.4	3.75	1,060.0	975.9	856.5	828.6	27.86	30.740		
5,700.0	5,643.2	5,759.6	5,529.5	16.4	29.8	3.70	1,076.2	990.5	871.8	843.5	28.36	30.746		
5,800.0	5,743.2	5,902.9	5,672.0	16.6	30.1	3.65	1,087.3	1,000.5	882.3	853.5	28.83	30.604		
5,900.0	5,843.2	6,047.4	5,816.3	16.8	30.3	3.60	1,093.1	1,005.8	887.7	858.5	29.27	30.329		
6,000.0	5,943.2	6,173.4	5,942.2	16.9	30.4	3.55	1,094.0	1,006.6	888.6	858.9	29.67	29.951		
6,100.0	6,043.2	6,273.4	6,042.2	17.1	30.5	3.50	1,094.0	1,006.6	888.6	858.5	30.04	29.578		
6,200.0	6,143.2	6,373.4	6,142.2	17.3	30.6	3.45	1,094.0	1,006.6	888.6	858.2	30.42	29.210		
6,300.0	6,243.2	6,473.4	6,242.2	17.4	30.7	3.40	1,094.0	1,006.6	888.6	857.8	30.80	28.850		
6,400.0	6,343.2	6,573.4	6,342.2	17.6	30.8	3.35	1,094.0	1,006.6	888.6	857.4	31.18	28.497		
6,500.0	6,443.2	6,673.4	6,442.2	17.8	30.9	3.30	1,094.0	1,006.6	888.6	857.0	31.57	28.150		
6,600.0	6,543.2	6,773.4	6,542.2	18.0	31.0	3.25	1,094.0	1,006.6	888.6	856.6	31.95	27.811		
6,700.0	6,643.2	6,873.4	6,642.2	18.1	31.1	3.20	1,094.0	1,006.6	888.6	856.2	32.34	27.478		
6,800.0	6,743.2	6,973.4	6,742.2	18.3	31.2	3.15	1,094.0	1,006.6	888.6	855.8	32.73	27.153		
6,900.0	6,843.2	7,073.4	6,842.2	18.5	31.3	3.10	1,094.0	1,006.6	888.6	855.5	33.11	26.833		
7,000.0	6,943.2	7,173.4	6,942.2	18.7	31.4	3.05	1,094.0	1,006.6	888.6	855.1	33.51	26.520		
7,100.0	7,043.2	7,273.4	7,042.2	18.8	31.5	3.00	1,094.0	1,006.6	888.6	854.7	33.90	26.213		

CC - Min centre to center distance or convergent point, SF - min separation factor, ES - min ellipse separation

<b>Company:</b>	Synergy Resources	<b>Local Co-ordinate Reference:</b>	Well Klein 34-8D
<b>Project:</b>	SEC.8-T4N-R67W	<b>TVD Reference:</b>	WELL @ 4807.0ft (Original Well Elev)
<b>Reference Site:</b>	Klein 44-8D Pad Sec.8-T4N-R67W	<b>MD Reference:</b>	WELL @ 4807.0ft (Original Well Elev)
<b>Site Error:</b>	0.0ft	<b>North Reference:</b>	True
<b>Reference Well:</b>	Klein 34-8D	<b>Survey Calculation Method:</b>	Minimum Curvature
<b>Well Error:</b>	0.0ft	<b>Output errors are at</b>	2.00 sigma
<b>Reference Wellbore</b>	Wellbore #1	<b>Database:</b>	Landmark
<b>Reference Design:</b>	Plan #1 (5-03-11)	<b>Offset TVD Reference:</b>	Offset Datum

Offset Design Klein 44-8D Pad Sec.8-T4N-R67W - Klein 8DD - Wellbore #1 - Plan #1 (5-03-11)													Offset Site Error:	0.0 ft
Survey Program: 0-MWD													Offset Well Error:	0.0 ft
Reference		Offset		Semi Major Axis			Distance						Warning	
Measured Depth (ft)	Vertical Depth (ft)	Measured Depth (ft)	Vertical Depth (ft)	Reference (ft)	Offset (ft)	Highside Toolface (°)	Offset Wellbore Centre +N/-S (ft)	+E/-W (ft)	Between Centres (ft)	Between Ellipses (ft)	Minimum Separation (ft)	Separation Factor		
7,200.0	7,143.2	7,373.4	7,142.2	19.0	31.6	43.98	1,094.0	1,006.6	888.6	854.3	34.29	25.912		
7,300.0	7,243.2	7,473.4	7,242.2	19.2	31.7	43.98	1,094.0	1,006.6	888.6	853.9	34.69	25.617		
7,400.0	7,343.2	7,573.4	7,342.2	19.4	31.8	43.98	1,094.0	1,006.6	888.6	853.5	35.08	25.327		
7,500.0	7,443.2	7,673.4	7,442.2	19.6	31.9	43.98	1,094.0	1,006.6	888.6	853.1	35.48	25.044		
7,600.0	7,543.2	7,773.4	7,542.2	19.8	32.0	43.98	1,094.0	1,006.6	888.6	852.7	35.88	24.766		
7,700.0	7,643.2	7,873.4	7,642.2	19.9	32.1	43.98	1,094.0	1,006.6	888.6	852.3	36.28	24.493		
7,800.0	7,743.2	7,973.4	7,742.2	20.1	32.3	43.98	1,094.0	1,006.6	888.6	851.9	36.68	24.225		
7,906.8	7,850.0	8,080.2	7,849.0	20.3	32.4	43.98	1,094.0	1,006.6	888.6	851.5	37.11	23.945		



Anticollision Report

<b>Company:</b>	Synergy Resources	<b>Local Co-ordinate Reference:</b>	Well Klein 34-8D
<b>Project:</b>	SEC.8-T4N-R67W	<b>TVD Reference:</b>	WELL @ 4807.0ft (Original Well Elev)
<b>Reference Site:</b>	Klein 44-8D Pad Sec.8-T4N-R67W	<b>MD Reference:</b>	WELL @ 4807.0ft (Original Well Elev)
<b>Site Error:</b>	0.0ft	<b>North Reference:</b>	True
<b>Reference Well:</b>	Klein 34-8D	<b>Survey Calculation Method:</b>	Minimum Curvature
<b>Well Error:</b>	0.0ft	<b>Output errors are at</b>	2.00 sigma
<b>Reference Wellbore</b>	Wellbore #1	<b>Database:</b>	Landmark
<b>Reference Design:</b>	Plan #1 (5-03-11)	<b>Offset TVD Reference:</b>	Offset Datum

Offset Design Klein 44-8D Pad Sec.8-T4N-R67W - Klein 8SD - Wellbore #1 - Plan #1 (5-03-11)														Offset Site Error:	0.0 ft
Survey Program: 0-MWD														Offset Well Error:	0.0 ft
Reference		Offset		Semi Major Axis			Distance		Distance		Minimum Separation (ft)	Separation Factor	Warning		
Measured Depth (ft)	Vertical Depth (ft)	Measured Depth (ft)	Vertical Depth (ft)	Reference (ft)	Offset (ft)	Highside Toolface (°)	Offset Wellbore Centre +N/-S (ft)	+E/-W (ft)	Between Centres (ft)	Between Ellipses (ft)					
0.0	0.0	0.0	0.0	0.0	0.0	-88.96	0.4	-20.1	20.1						
100.0	100.0	100.0	100.0	0.1	0.1	-88.96	0.4	-20.1	20.1	19.9	0.22	89.339			
200.0	200.0	200.0	200.0	0.3	0.3	-88.96	0.4	-20.1	20.1	19.4	0.67	29.780			
300.0	300.0	300.0	300.0	0.6	0.6	-88.96	0.4	-20.1	20.1	19.0	1.12	17.868			
400.0	400.0	400.2	400.2	0.8	0.8	-84.19	2.0	-19.4	19.5	17.9	1.57	12.374			
500.0	500.0	500.2	500.1	1.0	1.0	-68.60	6.8	-17.3	18.6	16.5	2.03	9.151			
510.2	510.2	510.4	510.2	1.0	1.0	-66.35	7.4	-17.0	18.5	16.5	2.07	8.938 CC, ES			
600.0	600.0	599.7	599.2	1.2	1.3	-43.16	14.7	-13.8	20.2	17.7	2.49	8.101 SF			
700.0	700.0	698.5	697.2	1.5	1.5	-19.25	25.7	-9.0	27.4	24.4	2.99	9.162			
800.0	800.0	796.3	793.8	1.7	1.8	-4.15	39.7	-2.9	40.2	36.7	3.51	11.466			
900.0	900.0	893.0	888.8	1.9	2.2	4.51	56.4	4.5	57.7	53.6	4.05	14.251			
1,000.0	1,000.0	988.3	981.7	2.1	2.6	9.69	75.8	12.9	79.0	74.4	4.60	17.160			
1,100.0	1,100.0	1,082.1	1,072.5	2.4	3.0	12.97	97.6	22.5	103.8	98.7	5.18	20.042			
1,200.0	1,200.0	1,174.2	1,160.7	2.6	3.5	15.19	121.6	33.0	132.0	126.2	5.78	22.834			
1,300.0	1,300.0	1,264.5	1,246.4	2.8	4.0	16.74	147.7	44.4	163.3	156.9	6.40	25.511			
1,400.0	1,400.0	1,352.9	1,329.3	3.0	4.6	17.88	175.6	56.6	197.6	190.6	7.04	28.066			
1,500.0	1,500.0	1,439.1	1,409.4	3.3	5.2	18.74	205.1	69.6	234.8	227.1	7.70	30.502			
1,600.0	1,600.0	1,523.9	1,487.0	3.5	5.8	-21.02	236.2	83.2	273.3	266.0	7.27	37.600			
1,700.0	1,699.8	1,607.8	1,562.8	3.7	6.4	-20.52	269.1	97.6	311.5	303.7	7.76	40.157			
1,800.0	1,799.5	1,690.8	1,636.8	3.9	7.1	-20.24	303.6	112.7	349.3	341.1	8.25	42.321			
1,900.0	1,898.7	1,774.8	1,710.5	4.2	7.9	-20.12	340.5	128.8	386.8	378.1	8.77	44.111			
2,000.0	1,997.5	1,866.0	1,789.9	4.4	8.7	-20.15	381.6	146.9	422.7	413.3	9.32	45.365			
2,079.7	2,075.7	1,941.2	1,855.4	4.6	9.4	-20.29	415.6	161.7	449.0	439.3	9.77	45.963			
2,100.0	2,095.6	1,960.4	1,872.1	4.7	9.6	-20.38	424.2	165.5	455.5	445.6	9.89	46.055			
2,200.0	2,193.6	2,055.2	1,954.5	5.0	10.5	-20.78	467.0	184.2	487.4	476.9	10.49	46.450			
2,300.0	2,291.6	2,149.9	2,037.0	5.3	11.4	-21.14	509.7	202.9	519.3	508.2	11.11	46.757			
2,400.0	2,389.5	2,244.6	2,119.4	5.7	12.2	-21.46	552.4	221.6	551.2	539.5	11.73	46.996			
2,500.0	2,487.5	2,339.4	2,201.9	6.0	13.1	-21.74	595.1	240.3	583.1	570.8	12.36	47.180			
2,600.0	2,585.4	2,434.1	2,284.3	6.4	14.0	-22.00	637.9	259.0	615.1	602.1	13.00	47.321			
2,700.0	2,683.4	2,528.8	2,366.8	6.8	14.9	-22.22	680.6	277.7	647.0	633.4	13.64	47.426			
2,800.0	2,781.4	2,623.5	2,449.2	7.2	15.8	-22.43	723.3	296.4	679.0	664.7	14.29	47.505			
2,900.0	2,879.3	2,718.3	2,531.7	7.5	16.7	-22.62	766.0	315.2	710.9	696.0	14.95	47.561			
3,000.0	2,977.3	2,813.0	2,614.1	7.9	17.6	-22.79	808.8	333.9	742.9	727.3	15.61	47.599			
3,100.0	3,075.2	2,907.7	2,696.6	8.3	18.5	-22.95	851.5	352.6	774.9	758.6	16.27	47.623			
3,200.0	3,173.2	3,002.5	2,779.1	8.7	19.4	-23.09	894.2	371.3	806.9	789.9	16.94	47.635			
3,300.0	3,271.2	3,097.2	2,861.5	9.1	20.3	-23.23	936.9	390.0	838.9	821.3	17.61	47.638			
3,400.0	3,369.1	3,191.9	2,944.0	9.5	21.2	-23.35	979.7	408.7	870.9	852.6	18.28	47.634			
3,500.0	3,467.1	3,286.6	3,026.4	10.0	22.1	-23.47	1,022.4	427.4	902.8	883.9	18.96	47.624			
3,600.0	3,565.0	3,381.4	3,108.9	10.4	23.0	-23.57	1,065.1	446.1	934.8	915.2	19.64	47.608			
3,700.0	3,663.0	3,476.1	3,191.3	10.8	23.9	-23.67	1,107.8	464.8	966.8	946.5	20.32	47.589			
3,800.0	3,761.0	3,570.8	3,273.8	11.2	24.8	-23.77	1,150.6	483.5	998.8	977.8	21.00	47.567			
3,900.0	3,858.9	3,665.6	3,356.2	11.6	25.7	-23.86	1,193.3	502.2	1,030.9	1,009.2	21.68	47.543			
4,000.0	3,956.9	3,760.3	3,438.7	12.0	26.6	-23.94	1,236.0	520.9	1,062.9	1,040.5	22.37	47.517			
4,100.0	4,054.8	3,855.0	3,521.1	12.5	27.5	-24.02	1,278.7	539.6	1,094.9	1,071.8	23.06	47.489			
4,200.0	4,152.8	3,949.7	3,603.6	12.9	28.4	-24.09	1,321.5	558.3	1,126.9	1,103.1	23.74	47.460			
4,300.0	4,250.8	4,044.5	3,686.0	13.3	29.3	-24.16	1,364.2	577.0	1,158.9	1,134.5	24.43	47.431			
4,400.0	4,348.7	4,139.2	3,768.5	13.7	30.2	-24.23	1,406.9	595.8	1,190.9	1,165.8	25.12	47.400			
4,477.1	4,424.3	4,212.2	3,832.0	14.0	30.9	-24.27	1,439.9	610.2	1,215.6	1,189.9	25.66	47.377			
4,500.0	4,446.7	4,233.9	3,850.9	14.1	31.1	-24.35	1,449.6	614.5	1,223.0	1,197.2	25.80	47.410			
4,600.0	4,545.1	4,327.9	3,932.7	14.4	32.0	-24.66	1,492.0	633.0	1,257.2	1,230.9	26.34	47.729			
4,700.0	4,644.1	4,420.7	4,013.5	14.7	32.9	-24.94	1,533.9	651.3	1,294.4	1,267.5	26.84	48.228			
4,800.0	4,743.5	4,512.3	4,093.2	15.0	33.8	-25.18	1,575.2	669.4	1,334.4	1,307.2	27.29	48.900			

CC - Min centre to center distance or convergent point, SF - min separation factor, ES - min ellipse separation



Anticollision Report

<b>Company:</b>	Synergy Resources	<b>Local Co-ordinate Reference:</b>	Well Klein 34-8D
<b>Project:</b>	SEC.8-T4N-R67W	<b>TVD Reference:</b>	WELL @ 4807.0ft (Original Well Elev)
<b>Reference Site:</b>	Klein 44-8D Pad Sec.8-T4N-R67W	<b>MD Reference:</b>	WELL @ 4807.0ft (Original Well Elev)
<b>Site Error:</b>	0.0ft	<b>North Reference:</b>	True
<b>Reference Well:</b>	Klein 34-8D	<b>Survey Calculation Method:</b>	Minimum Curvature
<b>Well Error:</b>	0.0ft	<b>Output errors are at</b>	2.00 sigma
<b>Reference Wellbore</b>	Wellbore #1	<b>Database:</b>	Landmark
<b>Reference Design:</b>	Plan #1 (5-03-11)	<b>Offset TVD Reference:</b>	Offset Datum

Offset Design Klein 44-8D Pad Sec.8-T4N-R67W - Klein 8SD - Wellbore #1 - Plan #1 (5-03-11)													Offset Site Error:	0.0 ft
Survey Program: 0-MWD													Offset Well Error:	0.0 ft
Reference		Offset		Semi Major Axis			Distance						Warning	
Measured Depth (ft)	Vertical Depth (ft)	Measured Depth (ft)	Vertical Depth (ft)	Reference (ft)	Offset (ft)	Highside Toolface (°)	Offset Wellbore Centre +N/-S (ft)	+E/-W (ft)	Between Centres (ft)	Between Ellipses (ft)	Minimum Separation (ft)	Separation Factor		
4,900.0	4,843.3	4,602.5	4,171.7	15.2	34.7	-25.40	1,615.9	687.2	1,377.4	1,349.7	27.69	49.741		
5,000.0	4,943.2	4,691.2	4,248.9	15.3	35.5	-25.60	1,655.9	704.8	1,423.2	1,395.2	28.05	50.745		
5,056.8	5,000.0	4,740.9	4,292.2	15.4	36.0	14.88	1,678.3	714.6	1,450.5	1,422.3	28.23	51.386		
5,100.0	5,043.2	4,778.5	4,324.9	15.5	36.3	15.00	1,695.3	722.0	1,471.6	1,443.2	28.42	51.785		
5,200.0	5,143.2	4,865.5	4,400.6	15.6	37.2	15.28	1,734.5	739.2	1,520.4	1,491.5	28.88	52.648		
5,300.0	5,243.2	4,952.6	4,476.4	15.8	38.0	15.54	1,773.8	756.4	1,569.3	1,539.9	29.35	53.476		
5,400.0	5,343.2	5,039.6	4,552.2	15.9	38.8	15.79	1,813.0	773.6	1,618.1	1,588.3	29.82	54.270		
5,500.0	5,443.2	5,126.6	4,627.9	16.1	39.7	16.02	1,852.3	790.8	1,667.0	1,636.7	30.29	55.033		
5,600.0	5,543.2	5,213.7	4,703.7	16.3	40.5	16.23	1,891.5	807.9	1,715.9	1,685.2	30.77	55.766		
5,700.0	5,643.2	5,300.7	4,779.4	16.4	41.3	16.44	1,930.8	825.1	1,764.9	1,733.6	31.25	56.472		
5,800.0	5,743.2	5,387.8	4,855.2	16.6	42.2	16.64	1,970.1	842.3	1,813.8	1,782.1	31.74	57.150		
5,900.0	5,843.2	5,562.0	5,008.3	16.8	43.6	16.98	2,046.1	875.6	1,861.7	1,829.2	32.47	57.330		
6,000.0	5,943.2	5,825.4	5,248.6	16.9	45.2	17.39	2,144.8	918.8	1,902.4	1,869.0	33.41	56.938		
6,100.0	6,043.2	6,109.3	5,517.4	17.1	46.7	17.69	2,228.1	955.3	1,934.4	1,900.0	34.34	56.331		
6,200.0	6,143.2	6,410.1	5,810.5	17.3	47.8	17.90	2,289.4	982.1	1,956.5	1,921.3	35.19	55.595		
6,300.0	6,243.2	6,722.2	6,120.4	17.4	48.5	18.01	2,322.8	996.8	1,968.2	1,932.3	35.92	54.799		
6,400.0	6,343.2	6,945.1	6,343.2	17.6	48.7	18.02	2,328.0	999.0	1,969.9	1,933.5	36.40	54.126		
6,500.0	6,443.2	7,045.1	6,443.2	17.8	48.7	18.02	2,328.0	999.0	1,969.9	1,933.2	36.72	53.642		
6,600.0	6,543.2	7,145.1	6,543.2	18.0	48.8	18.02	2,328.0	999.0	1,969.9	1,932.9	37.06	53.156		
6,700.0	6,643.2	7,245.1	6,643.2	18.1	48.9	18.02	2,328.0	999.0	1,969.9	1,932.5	37.40	52.677		
6,800.0	6,743.2	7,345.1	6,743.2	18.3	48.9	18.02	2,328.0	999.0	1,969.9	1,932.2	37.74	52.203		
6,900.0	6,843.2	7,445.1	6,843.2	18.5	49.0	18.02	2,328.0	999.0	1,969.9	1,931.9	38.08	51.735		
7,000.0	6,943.2	7,545.1	6,943.2	18.7	49.0	18.02	2,328.0	999.0	1,969.9	1,931.5	38.42	51.272		
7,100.0	7,043.2	7,645.1	7,043.2	18.8	49.1	18.02	2,328.0	999.0	1,969.9	1,931.2	38.77	50.816		
7,200.0	7,143.2	7,745.1	7,143.2	19.0	49.2	18.02	2,328.0	999.0	1,969.9	1,930.8	39.11	50.365		
7,300.0	7,243.2	7,845.1	7,243.2	19.2	49.2	18.02	2,328.0	999.0	1,969.9	1,930.5	39.46	49.920		
7,400.0	7,343.2	7,945.1	7,343.2	19.4	49.3	18.02	2,328.0	999.0	1,969.9	1,930.1	39.81	49.480		
7,500.0	7,443.2	8,045.1	7,443.2	19.6	49.4	18.02	2,328.0	999.0	1,969.9	1,929.8	40.17	49.046		
7,600.0	7,543.2	8,145.1	7,543.2	19.8	49.4	18.02	2,328.0	999.0	1,969.9	1,929.4	40.52	48.617		
7,700.0	7,643.2	8,245.1	7,643.2	19.9	49.5	18.02	2,328.0	999.0	1,969.9	1,929.1	40.88	48.194		
7,800.0	7,743.2	8,345.1	7,743.2	20.1	49.6	18.02	2,328.0	999.0	1,969.9	1,928.7	41.23	47.776		
7,906.8	7,850.0	8,452.0	7,850.0	20.3	49.6	18.02	2,328.0	999.0	1,969.9	1,928.3	41.62	47.337		

**Company:** Synergy Resources  
**Project:** SEC.8-T4N-R67W  
**Reference Site:** Klein 44-8D Pad Sec.8-T4N-R67W  
**Site Error:** 0.0ft  
**Reference Well:** Klein 34-8D  
**Well Error:** 0.0ft  
**Reference Wellbore:** Wellbore #1  
**Reference Design:** Plan #1 (5-03-11)

**Local Co-ordinate Reference:** Well Klein 34-8D  
**TVD Reference:** WELL @ 4807.0ft (Original Well Elev)  
**MD Reference:** WELL @ 4807.0ft (Original Well Elev)  
**North Reference:** True  
**Survey Calculation Method:** Minimum Curvature  
**Output errors are at:** 2.00 sigma  
**Database:** Landmark  
**Offset TVD Reference:** Offset Datum

Reference Depths are relative to WELL @ 4807.0ft (Original Well Elev) Coordinates are relative to: Klein 34-8D  
 Offset Depths are relative to Offset Datum Coordinate System is US State Plane 1983, Colorado Northern Zone  
 Central Meridian is -105.500000 ° Grid Convergence at Surface is: 0.38°



<b>Company:</b>	Synergy Resources	<b>Local Co-ordinate Reference:</b>	Well Klein 34-8D
<b>Project:</b>	SEC.8-T4N-R67W	<b>TVD Reference:</b>	WELL @ 4807.0ft (Original Well Elev)
<b>Reference Site:</b>	Klein 44-8D Pad Sec.8-T4N-R67W	<b>MD Reference:</b>	WELL @ 4807.0ft (Original Well Elev)
<b>Site Error:</b>	0.0ft	<b>North Reference:</b>	True
<b>Reference Well:</b>	Klein 34-8D	<b>Survey Calculation Method:</b>	Minimum Curvature
<b>Well Error:</b>	0.0ft	<b>Output errors are at</b>	2.00 sigma
<b>Reference Wellbore</b>	Wellbore #1	<b>Database:</b>	Landmark
<b>Reference Design:</b>	Plan #1 (5-03-11)	<b>Offset TVD Reference:</b>	Offset Datum

Reference Depths are relative to WELL @ 4807.0ft (Original Well Elev) Coordinates are relative to: Klein 34-8D  
 Offset Depths are relative to Offset Datum Coordinate System is US State Plane 1983, Colorado Northern Zone  
 Central Meridian is -105.500000 ° Grid Convergence at Surface is: 0.38°

