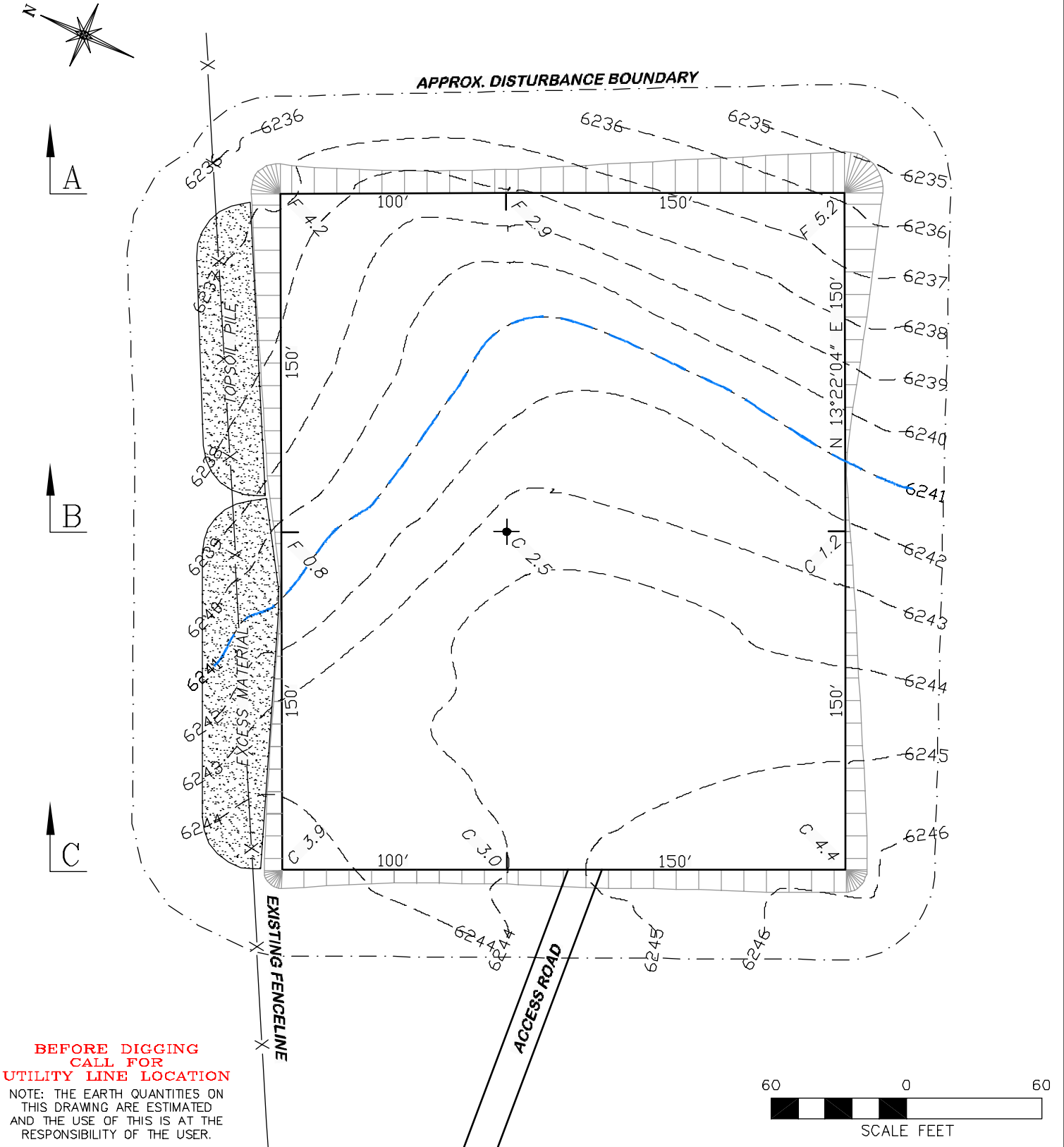



APPROXIMATE DISTURBANCE AREA: 3.1 ACRES±
2.3% GRADE ON AN NORTHEASTERLY SLOPE
UNGRADED ELEVATION: 6243.5'
FINISHED ELEVATION: 6241.0'



**BEFORE DIGGING
 CALL FOR
 UTILITY LINE LOCATION**
 NOTE: THE EARTH QUANTITIES ON
 THIS DRAWING ARE ESTIMATED
 AND THE USE OF THIS IS AT THE
 RESPONSIBILITY OF THE USER.

 RIFFIN & ASSOCIATES, INC. (307) 362-5028 1414 ELK ST., ROCK SPRINGS, WY 82901		CONSTRUCTION LAYOUT DRAWING 2 OF 3 GULFPORT ENERGY CORPORATION MOFFAT 22-11-1 SECTION 11, T6N, R91W	
DRAWN: 5/26/11 - JMB	SCALE: 1" = 60'	UNGRADED ELEVATION: 6243.5' FINISHED ELEVATION: 6241.0'	
REVISED: 6/15/11 - JMB	DRG JOB No. 18611		
REVISED ACCESS ROUTE	EXHIBIT 2A		