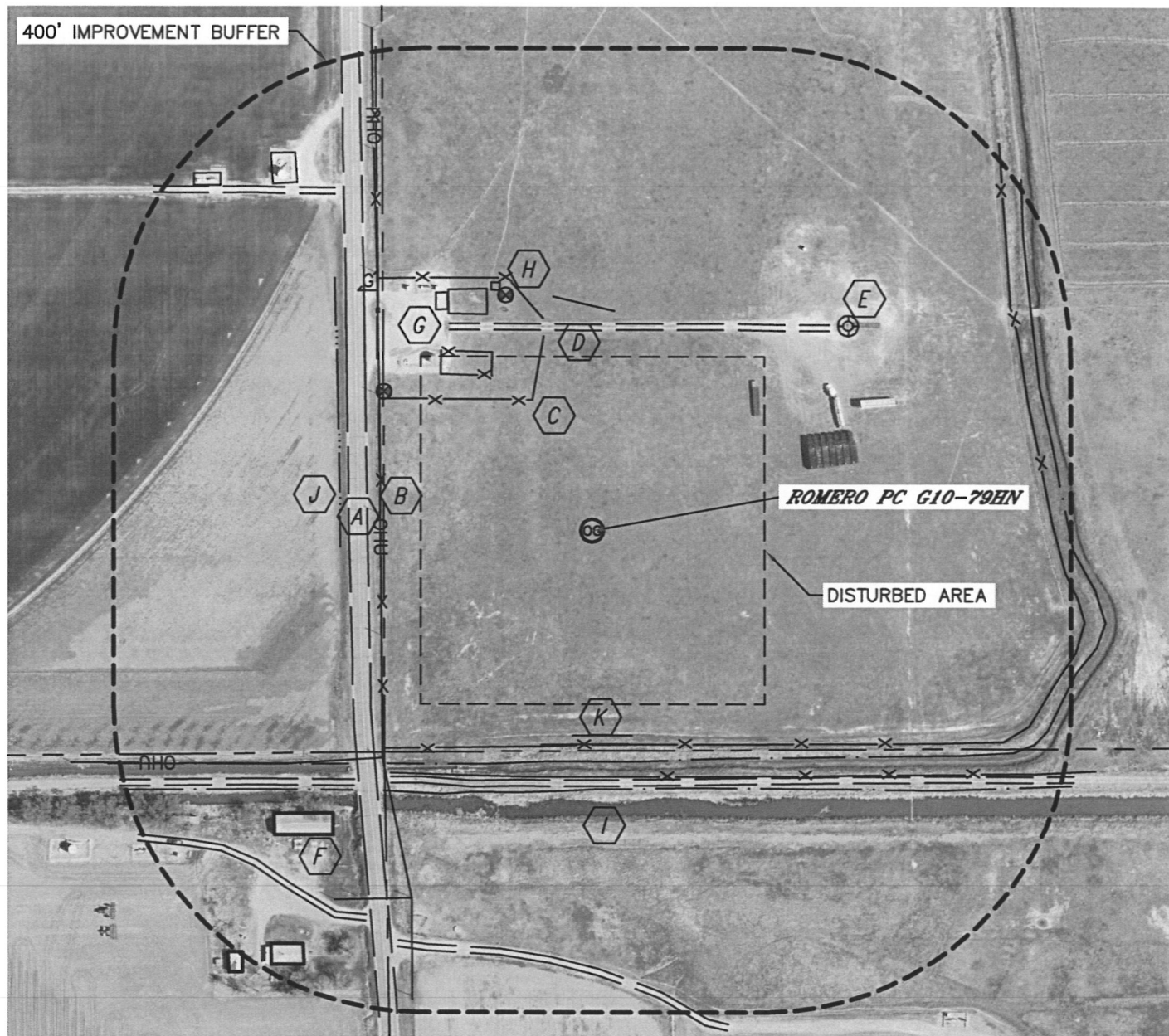


## LOCATION DRAWING

ROMERO PC G10-79HN

SECTION: 3  
TOWNSHIP: 4N  
RANGE: 65W



### IMPROVEMENTS:

- |   |  |
|---|--|
| <b>A</b> COUNTY ROAD 43 294' W                          | <b>F</b> BUILDING 500' SW, 655' SW, 710' SW              |
| <b>B</b> OVERHEAD UTILITY 277' W                        | <b>G</b> PRODUCTION FACILITY (NOBLE)<br>240' NW, 593' NW |
| <b>C</b> FENCE 187' NW, 277' W, 278' S, 320' S, 591' NE | <b>H</b> MONITORING WELL 325' NW, 327' NW                |
| <b>D</b> FIELD ROAD 260' N, 324' S, 550' NW, 555' SW    | <b>I</b> CANAL 299' S, 336' S, 611' NE                   |
| <b>E</b> AGELINA ROMERO 1 427' NE                       | <b>J</b> BARROW DITCH 329' W                             |
|   | <b>K</b> LOW AREA 266' S, 286' N                         |

NEAREST: BUILDING 500' SW, PUBLIC ROAD (CR 43) 294' W,  
ABOVE GROUND UTILITY 277' W, RAILROAD 5280'+, PROPERTY LINE 273' W

