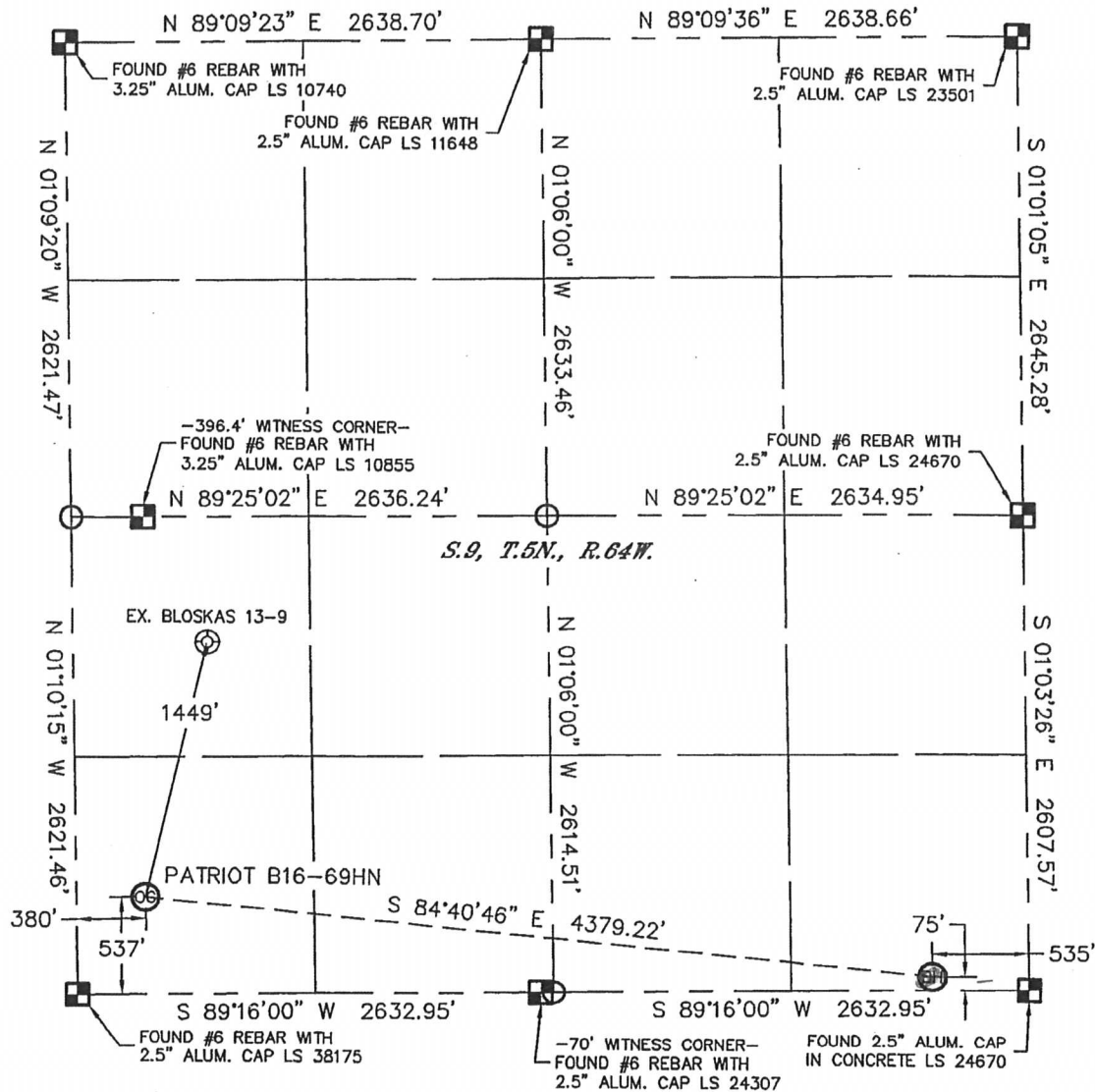


Lat40°, Inc. 1635 Foxtrail Drive, Suite 325 Loveland, CO 970-776-3321

WELL LOCATION CERTIFICATE

THIS MAP DOES NOT REPRESENT A BOUNDARY SURVEY

SECTION: 9
TOWNSHIP: 5N
RANGE: 64W



In accordance with a request from Erik Van Decar with Noble Energy Inc. Lat40°, Inc. has determined the surface location of the PATRIOT B16-69HN to be 537' from the SOUTH line and 380' from the WEST line and the bottom hole to be 75' from the SOUTH line and 535' from the EAST line as measured at right angles from the section lines of Section 9, Township 5 North, Range 64 West of the Sixth Principal Meridian, County of Weld, State of Colorado.

I hereby state that this Well Location Certificate was prepared by me, or under my direct supervision, that the fieldwork was completed on 4/15/11, for and on behalf of Noble Energy Inc. That this is not a Land Survey Plat or an Improvement Survey Plat, and that it is not to be relied upon for establishment of fence, building, or other future improvement lines.

NOTE:

- 1) Bearings shown are Grid Bearings of the Colorado State Plane Coordinate System, North Zone, North American Datum 1983/2007. The lineal dimensions as contained herein are based upon the "U.S. Survey Foot."
- 2) Ground elevations are based on an observed GPS elevation (NAVD 1988 DATUM).
- 3) NEAREST EXISTING WELL: BLOSKAS 13-9, 1449'
- 4) IMPROVEMENTS: See LOCATION DRAWING for all visible improvements within 400' of disturbed area.
- 5) SURFACE USE: CROP FIELD
- 6) INSTRUMENT OPERATOR: ADAM KELLY

NOTE

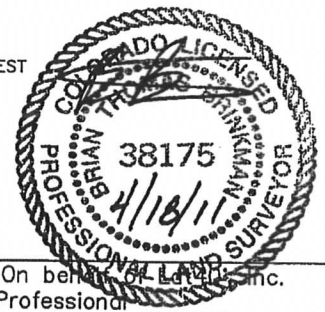
According to Colorado law, you must commence any legal action based upon any defect in this W.L.C. within three years after you discover such defect. In no event, may any action based upon any defect in this survey be commenced more than ten years after the date of the certificate shown hereon. (13-80-105 C.R.S.)

LEGEND

- = ALIQUOT MONUMENT AS DESCRIBED
- = CALCULATED POSITION

SURFACE LOCATION
LATITUDE: 40.40803°N
LONGITUDE: 104.56314°W
PDOP: 2.2
ELEV: 4603'
1/4, 1/4: SW1/4SW1/4
NEAREST PROPERTY LINE: ±250' WEST

BOTTOM HOLE
LATITUDE: 40.40879°N
LONGITUDE: 104.54750°W



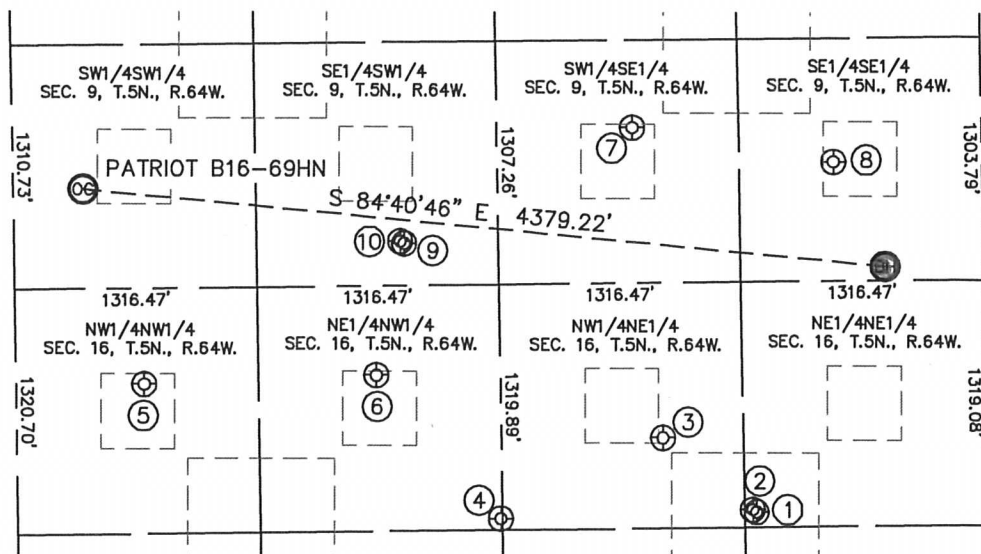
Brian T. Brinkman—On behalf of Lat40°, Inc.
Colorado Licensed Professional
Land Surveyor No. 38175

PROJECT#: 2011097

SITE SKETCH

PATRIOT B16-69HN

SECTION: 9
TOWNSHIP: 5N
RANGE: 64W



- | | | | | | |
|---|---|---|---|--|---|
| ①
PATRIOT B16-1
NE1/4NE1/4
1238' FNL
1252' FEL
LAT-40.40318°N
LONG-104.55005°W
PDOP: 2.0
ELEV: 4581' | ②
PATRIOT B16-17
NE1/4NE1/4
1225' FNL
1273' FEL
LAT-40.40322°N
LONG-104.55012°W
PDOP: 2.3
ELEV: 4581' | ③
PATRIOT B16-2
NW1/4NE1/4
833' FNL
1755' FEL
LAT-40.40429°N
LONG-104.55186°W
PDOP: 1.9
ELEV: 4581' | ④
PATRIOT B16-18
NE1/4NW1/4
1259' FNL
2624' FWL
LAT-40.40312°N
LONG-104.55504°W
PDOP: 2.0
ELEV: 4606' | ⑤
PATRIOT B16-4
NW1/4NW1/4
513' FNL
695' FWL
LAT-40.40515°N
LONG-104.56198°W
PDOP: 1.8
ELEV: 4611' | ⑥
PATRIOT B16-3
NE1/4NW1/4
480' FNL
1959' FWL
LAT-40.40525°N
LONG-104.55744°W
PDOP: 1.7
ELEV: 4595' |
| ⑦
BAUER OFFSET 9-43
SW1/4SE1/4
835' FSL
1894' FEL
LAT-40.40887°N
LONG-104.55240°W
PDOP: 2.4
ELEV: 4583' | ⑧
PETERSON B9-16
SE1/4SE1/4
640' FSL
805' FEL
LAT-40.40834°N
LONG-104.54849°W
PDOP: 2.2
ELEV: 4582' | ⑨
KLEIN B09-14D
SE1/4SW1/4
226' FSL
2121' FWL
LAT-40.40719°N
LONG-104.55688°W
PDOP: 1.4
ELEV: 4584' | ⑩
KLEIN B09-13D
SE1/4SW1/4
238' FSL
2100' FWL
LAT-40.40722°N
LONG-104.55695°W
PDOP: 1.6
ELEV: 4585' | | |

