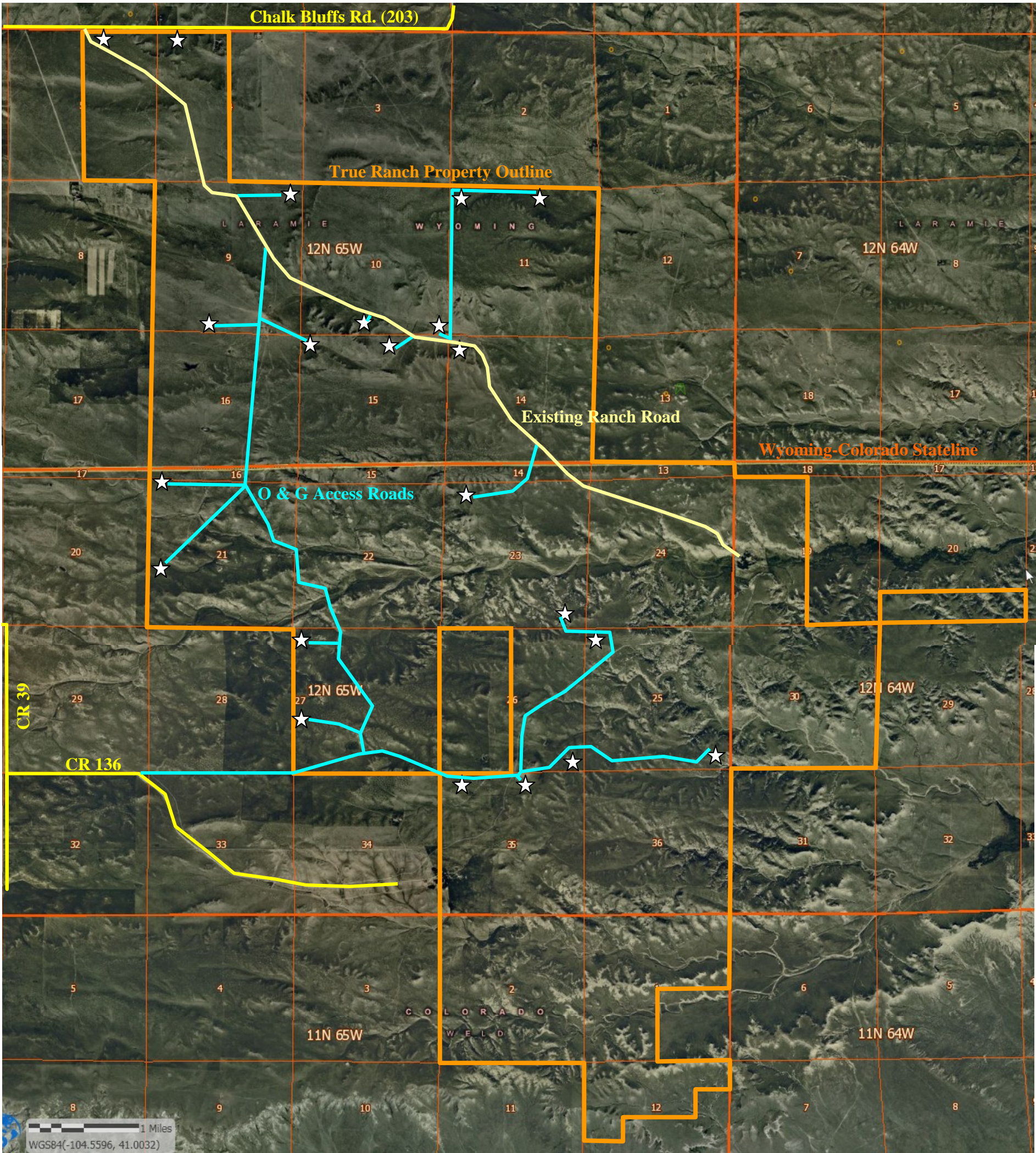


True Ranch Access Road Aerial



PROPOSED ACCESS PHOTO



Well Name: TRUE 12-65-21-12H

Operator: ANADARKO E&P CO., L.P.

Surface Location: T12N R65W S21 NWSW

Date Taken: 10/22/2010

1801 W. 13th Ave
Denver, CO 80204
(303) 928-7128

111 E. Third Street
Suite 207
Rifle, CO 81650
(970) 625-4740



Use our resources to find yours!
www.Petro-fs.com