

QUICKSILVER RESOURCES, INC.

CONSTRUCTION LAYOUT FOR

JAMES STEHLE #14-15
SECTION 15, T7N, R91W, 6th. P.M.
493' FSL 535' FWL

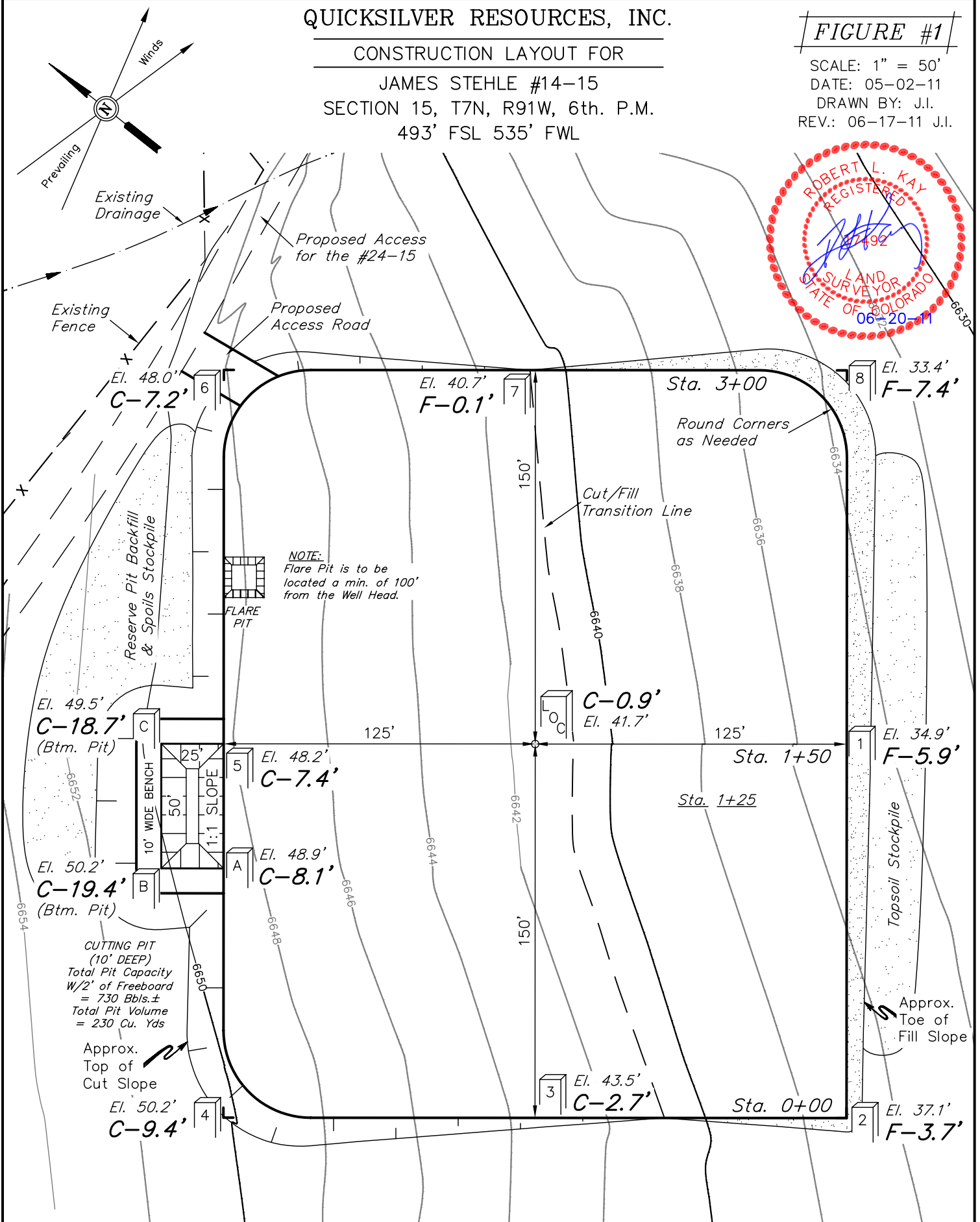
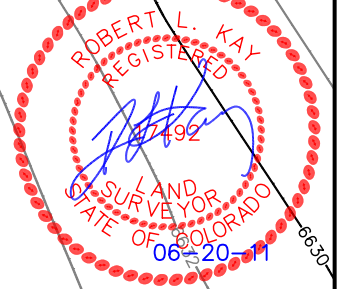
FIGURE #1

SCALE: 1" = 50'

DATE: 05-02-11

DRAWN BY: J.I.

REV.: 06-17-11 J.I.



Elev. Ungraded Ground At Loc. Stake = **6641.7'**
FINISHED GRADE ELEV. AT LOC. STAKE = **6640.8'**

UINTAH ENGINEERING & LAND SURVEYING
85 So. 200 East * Vernal, Utah 84078 * (435) 789-1017

QUICKSILVER RESOURCES, INC.

FIGURE #2

CONSTRUCTION LAYOUT CROSS SECTIONS FOR

JAMES STEHLE #14-15

SECTION 15, T7N, R91W, 6th. P.M.

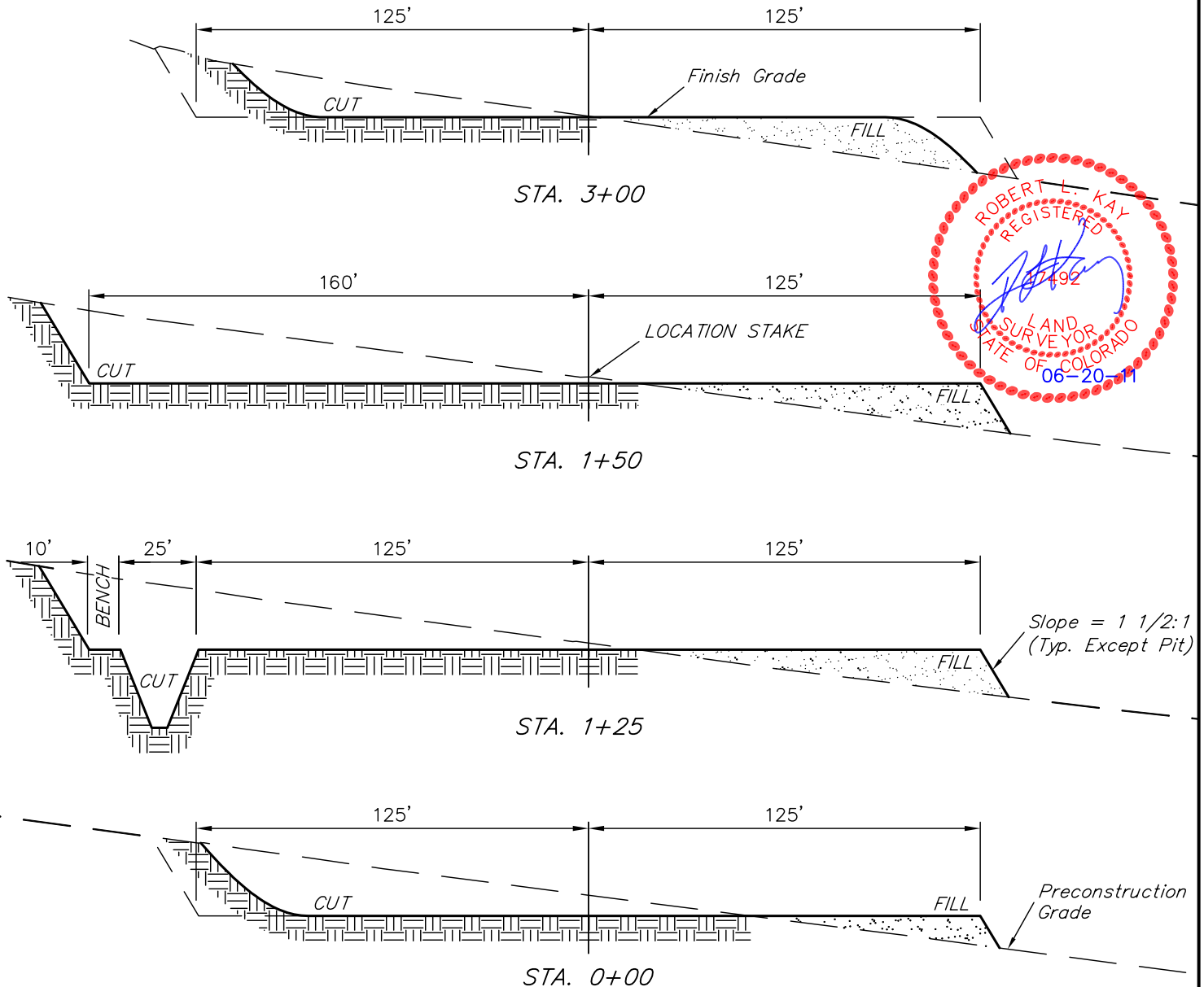
493' FSL 535' FWL

1" = 20'
X-Section
Scale
1" = 50'

DATE: 05-02-11

DRAWN BY: J.I.

REV.: 06-17-11 J.I.



NOTE:

Topsoil should not be Stripped Below Finished Grade on Substructure Area.

APPROXIMATE ACREAGES

WELL SITE DISTURBANCE = ± 2.276 ACRES
ACCESS ROAD DISTURBANCE = ± 0.014 ACRES
TOTAL = ± 2.290 ACRES

* NOTE:
FILL QUANTITY INCLUDES 5% FOR COMPACTION

APPROXIMATE YARDAGES

(6") Topsoil Stripping = 1,660 Cu. Yds.
Remaining Location = 7,090 Cu. Yds.
TOTAL CUT = 8,750 CU.YDS.
FILL = 4,800 CU.YDS.

EXCESS MATERIAL = 3,950 Cu. Yds.
Topsoil & Pit Backfill = 1,780 Cu. Yds.
(1/2 Pit Vol.)
EXCESS UNBALANCE = 2,170 Cu. Yds.
(After Interim Rehabilitation)

UINTAH ENGINEERING & LAND SURVEYING
85 So. 200 East * Vernal, Utah 84078 * (435) 789-1017

QUICKSILVER RESOURCES, INC.

TYPICAL RIG LAYOUT FOR

JAMES STEHLE #14-15
SECTION 15, T7N, R91W, 6th. P.M.
493' FSL 535' FWL

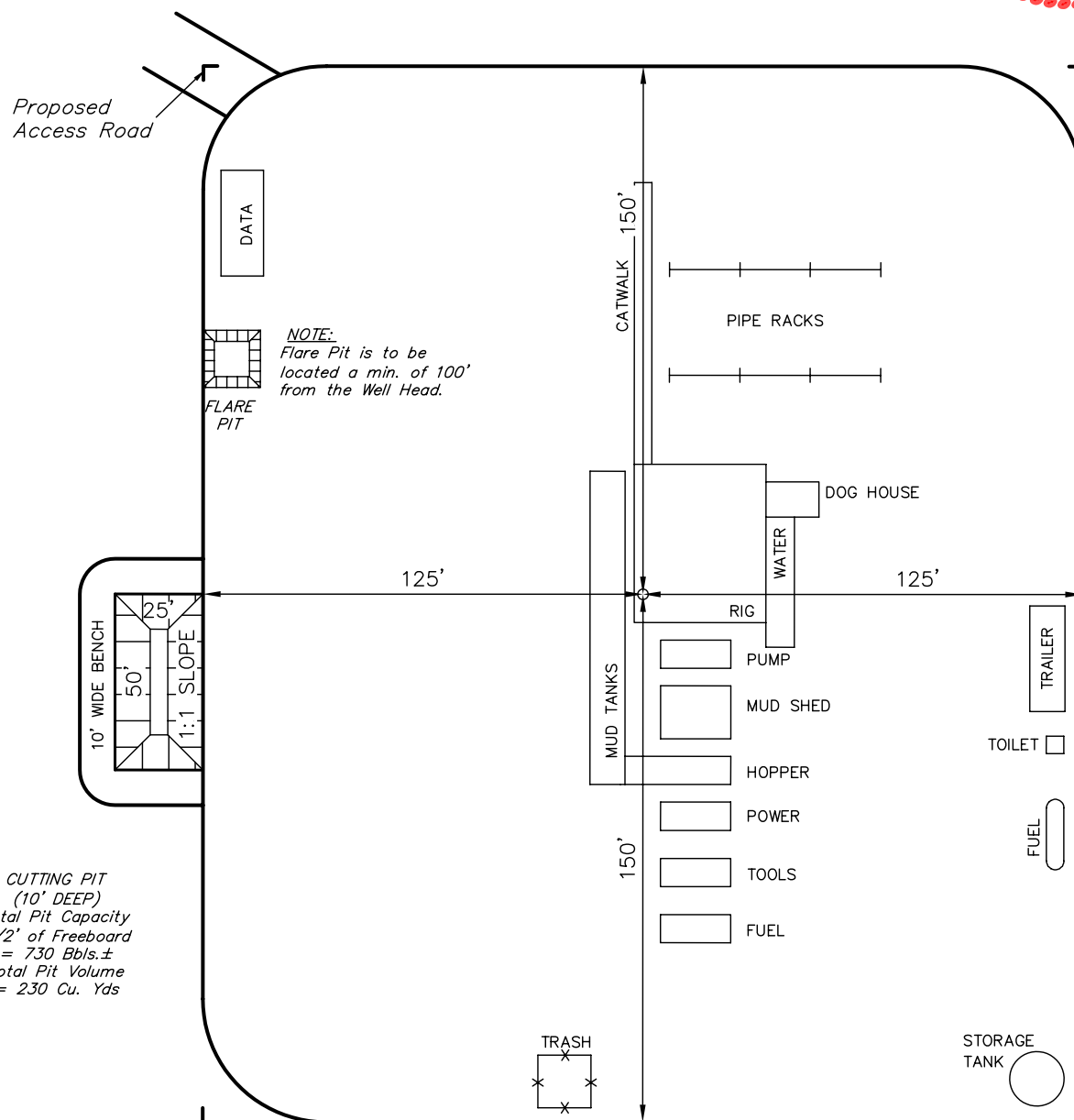
FIGURE #3

SCALE: 1" = 50'

DATE: 05-02-11

DRAWN BY: J.I.

REV.: 06-17-11 J.I.



QUICKSILVER RESOURCES, INC.

RECLAMATION DIAGRAM FOR

JAMES STEHLE #14-15
SECTION 15, T7N, R91W, 6th. P.M.
493' FSL 535' FWL

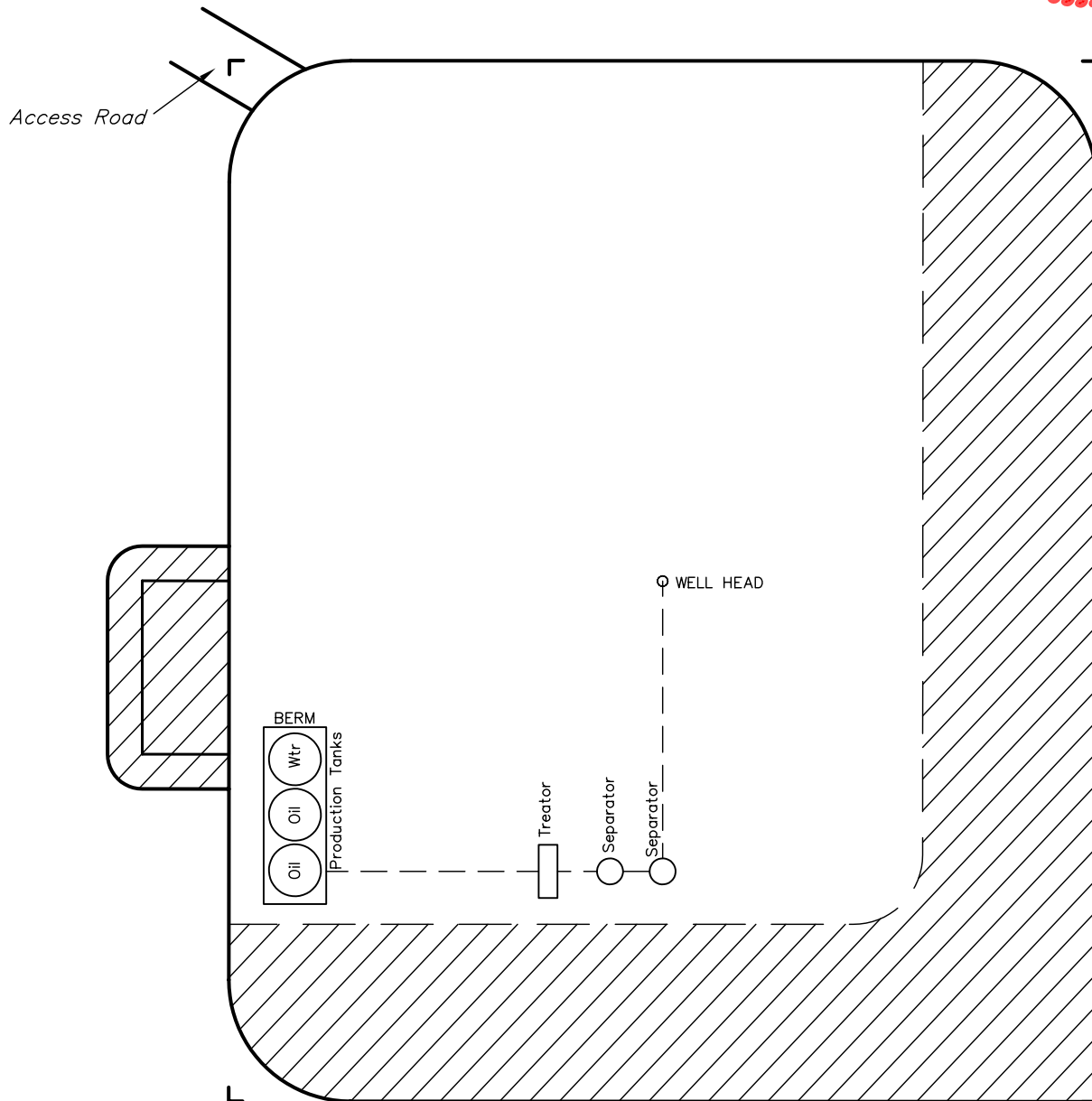
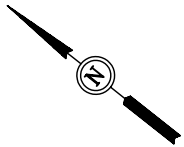
FIGURE #4

SCALE: 1" = 50'

DATE: 05-02-11

DRAWN BY: J.I.

REV.: 06-17-11 J.I.



APPROXIMATE ACREAGES

UN-RECLAIMED = ± 1.135 ACRES



RECLAIMED AREA

UINTAH ENGINEERING & LAND SURVEYING

85 So. 200 East * Vernal, Utah 84078 * (435) 789-1017