

# LEGEND:

PROPOSED LOCATION

# QUICKSILVER RESOURCES, INC.

**JAMES STEHLE #14-15**  
**SECTION 15, T7N, R91W, 6th P.M.**  
**493' FSL 534' FWL**



Uintah Engineering & Land Surveying  
 85 South 200 East Vernal, Utah 84078  
 (435) 789-1017 \* FAX (435) 789-1813



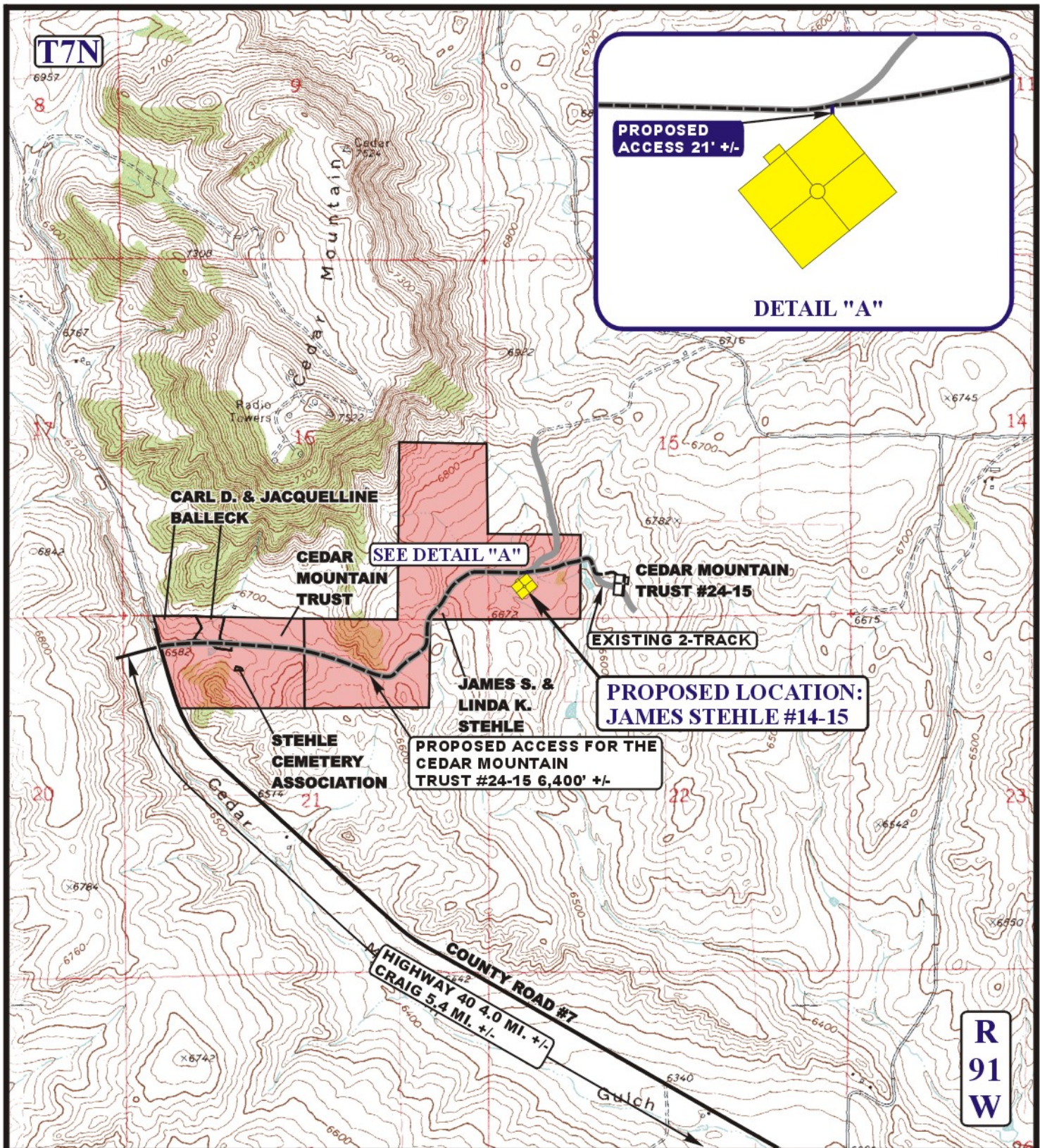
ACCESS ROAD  
 M A P

05 02 11  
 MONTH DAY YEAR

SCALE: 1:100,000 DRAWN BY: Z.L. REV: S.F. 06-14-11







# LEGEND:

	EXISTING ROAD
	PROPOSED ACCESS ROAD
	EXISTING 2-TRACK



## QUICKSILVER RESOURCES, INC.

**JAMES STEHLE #14-15**  
**SECTION 15, T7N, R91W, 6th P.M.**  
**493' FSL 534' FWL**



**Uintah Engineering & Land Surveying**  
**85 South 200 East Vernal, Utah 84078**  
**(435) 789-1017 \* FAX (435) 789-1813**

**ACCESS ROAD**  
**M A P**

**05 02 11**  
MONTH DAY YEAR



SCALE: 1" = 2000' DRAWN BY: Z.L. REV: S.F. 06-20-11