

---

**NOBLE ENERGY INC E-BUSINESS**

---

**Rulison Federal 20-11C  
RULISON  
Garfield County , Colorado**

**Cement Surface Casing  
05-Mar-2011**

**Post Job Report**

*The Road to Excellence Starts with Safety*

<b>Sold To #:</b> 345242	<b>Ship To #:</b> 2817223	<b>Quote #:</b>	<b>Sales Order #:</b> 8013744
<b>Customer:</b> NOBLE ENERGY INC E-BUSINESS		<b>Customer Rep:</b> Collver, Charles	
<b>Well Name:</b> Rulison Federal		<b>Well #:</b> 20-11C	<b>API/UWI #:</b> 05-045-18788
<b>Field:</b> RULISON	<b>City (SAP):</b>	<b>County/Parish:</b> Garfield	<b>State:</b> Colorado
<b>Lat:</b> N 39.433 deg. OR N 39 deg. 25 min. 59.57 secs.		<b>Long:</b> W 107.918 deg. OR W -108 deg. 4 min. 55.949 secs.	
<b>Contractor:</b> H&P Drilling		<b>Rig/Platform Name/Num:</b> H&P 322	
<b>Job Purpose:</b> Cement Surface Casing			
<b>Well Type:</b> Development Well		<b>Job Type:</b> Cement Surface Casing	
<b>Sales Person:</b> METLI, MARSHALL		<b>Srvc Supervisor:</b> HUGENTOBLER, LOGAN	<b>MBU ID Emp #:</b> 447333

**Job Personnel**

HES Emp Name	Exp Hrs	Emp #	HES Emp Name	Exp Hrs	Emp #	HES Emp Name	Exp Hrs	Emp #
HUGENTOBLER, LOGAN Mark	6	447333	LOPEZ, GERALD Wayne	6	479828	SMITH, DUSTIN Michael	6	418015
WYCKOFF, RYAN Scott	6	476117						

**Equipment**

HES Unit #	Distance-1 way	HES Unit #	Distance-1 way	HES Unit #	Distance-1 way	HES Unit #	Distance-1 way
10001431	60 mile	10248057	60 mile	10741119	60 mile	10744648C	60 mile
10829463	60 mile	10998508	60 mile				

**Job Hours**

Date	On Location Hours	Operating Hours	Date	On Location Hours	Operating Hours	Date	On Location Hours	Operating Hours
3/5/11	6	1						

**TOTAL** Total is the sum of each column separately

**Job**

**Job Times**

Formation Name	Top	Bottom	Called Out	Date	Time	Time Zone	
<b>Formation Depth (MD)</b>			<b>On Location</b>	05 - Mar - 2011	12:00	MST	
<b>Form Type</b>		BHST	<b>Job Started</b>	05 - Mar - 2011	16:00	MST	
<b>Job depth MD</b>	1560. ft	<b>Job Depth TVD</b>	1560. ft	<b>Job Started</b>	05 - Mar - 2011	19:21	MST
<b>Water Depth</b>		<b>Wk Ht Above Floor</b>	. ft	<b>Job Completed</b>	05 - Mar - 2011	20:15	MST
<b>Perforation Depth (MD)</b>	<i>From</i>	<i>To</i>	<b>Departed Loc</b>	05 - Mar - 2011	22:00	MST	

**Well Data**

Description	New / Used	Max pressure psig	Size in	ID in	Weight lbf/ft	Thread	Grade	Top MD ft	Bottom MD ft	Top TVD ft	Bottom TVD ft
12 1/4" Open Hole				12.25				.	1540.		
8 5/8" Surface Casing	New		8.625	7.921	32.		J-55	.	1540.		

**Sales/Rental/3<sup>rd</sup> Party (HES)**

Description	Qty	Qty uom	Depth	Supplier
PLUG,CMTG, TOP, 8 5/8, HWE, 7.20 MIN/8.09 MA	1	EA		
R/A DENSOMETER W/CHART RECORDER, /JOB, ZI	1	JOB		
PORT. DAS W/CEMWIN; ACQUIRE W/HES, ZI	1	JOB		
ADC (AUTO DENSITY CTRL) SYS, /JOB, ZI	1	JOB		

**Tools and Accessories**

Type	Size	Qty	Make	Depth	Type	Size	Qty	Make	Depth	Type	Size	Qty	Make
Guide Shoe					Packer					Top Plug	8.625	1	HES
Float Shoe					Bridge Plug					Bottom Plug			
Float Collar					Retainer					SSR plug set			
Insert Float										Plug Container			
Stage Tool										Centralizers			

**Miscellaneous Materials**

Gelling Agt		Conc		Surfactant		Conc		Acid Type		Qty		Conc	%	
Treatment Fld		Conc		Inhibitor		Conc		Sand Type		Size		Qty		
Fluid Data														
Stage/Plug #: 1														
Fluid #	Stage Type	Fluid Name			Qty	Qty uom	Mixing Density lbm/gal	Yield ft3/sk	Mix Fluid Gal/sk	Rate bbl/min	Total Mix Fluid Gal/sk			
1	Fresh Water Spacer				20.00	bbl	.	.0	.0	6				
2	VersaCem Lead Cement	VERSACEM (TM) SYSTEM (452010)			231.0	sacks	12.3	2.38	13.75	6	13.75			
		13.75 Gal FRESH WATER												
3	VersaCem Tail Cement	VERSACEM (TM) SYSTEM (452010)			122.0	sacks	12.8	2.11	11.75	6	11.75			
		11.75 Gal FRESH WATER												
4	Displacement				90.00	bbl	.	.0	.0	7				
Calculated Values			Pressures			Volumes								
Displacement	90		Shut In: Instant			Lost Returns	0		Cement Slurry	144		Pad		
Top Of Cement	SURFACE		5 Min			Cement Returns	10		Actual Displacement	70		Treatment		
Frac Gradient			15 Min			Spacers	20		Load and Breakdown			Total Job		
Rates														
Circulating	6		Mixing	6		Displacement	7		Avg. Job	6				
Cement Left In Pipe	Amount	42.8 ft		Reason	Shoe Joint									
Frac Ring # 1 @	ID		Frac ring # 2 @	ID		Frac Ring # 3 @	ID		Frac Ring # 4 @	ID				
The Information Stated Herein Is Correct						Customer Representative Signature								

*The Road to Excellence Starts with Safety*

<b>Sold To #:</b> 345242	<b>Ship To #:</b> 2817223	<b>Quote #:</b>	<b>Sales Order #:</b> 8013744
<b>Customer:</b> NOBLE ENERGY INC E-BUSINESS		<b>Customer Rep:</b> Collver, Charles	
<b>Well Name:</b> Rulison Federal		<b>Well #:</b> 20-11C	<b>API/UWI #:</b> 05-045-18788
<b>Field:</b> RULISON	<b>City (SAP):</b>	<b>County/Parish:</b> Garfield	<b>State:</b> Colorado
<b>Legal Description:</b>			
<b>Lat:</b> N 39.433 deg. OR N 39 deg. 25 min. 59.57 secs.		<b>Long:</b> W 107.918 deg. OR W -108 deg. 4 min. 55.949 secs.	
<b>Contractor:</b> H&P Drilling		<b>Rig/Platform Name/Num:</b> H&P 322	
<b>Job Purpose:</b> Cement Surface Casing			<b>Ticket Amount:</b>
<b>Well Type:</b> Development Well		<b>Job Type:</b> Cement Surface Casing	
<b>Sales Person:</b> METLI, MARSHALL		<b>Srvc Supervisor:</b> HUGENTOBLE, LOGAN	<b>MBU ID Emp #:</b> 447333

Activity Description	Date/Time	Cht #	Rate bbl/min	Volume bbl		Pressure psig		Comments
				Stage	Total	Tubing	Casing	
Call Out	03/05/2011 12:00							
Pre-Convoy Safety Meeting	03/05/2011 14:00							ALL HES EMPLOYEES
Arrive At Loc	03/05/2011 14:10							RIG STILL RUNNING CASING
Assessment Of Location Safety Meeting	03/05/2011 16:00							ALL HES EMPLOYEES
Rig-Up Equipment	03/05/2011 16:15							1 HT-400 PUMP TRUCK, 1 660 BULK TRUCK, 1 F-450 P/U, 1 BODY LOAD
Pre-Job Safety Meeting	03/05/2011 19:00							ALL HES EMPLOYEES, RIG CREW, CO REP AND ANY 3RD PARTY VENDORS
Start Job	03/05/2011 19:21							TP 1528 FT, TD 1560 FT, FC 1485 FT, HOLE 12.25", MUD WT 9.3 PPG, RATE WILL BE 6, WILL BUMP 500 PSI OVER LAND PSI, RIG CIRCULATED HOLE FOR 1 HRS
Pump Water	03/05/2011 19:21		2	2			48.0	FILL LINES PRIOR TO PRESSURE TESTING LINES
Pressure Test	03/05/2011 19:24							NO LEAKS, KICK OUTS SET TO 3000 PSI FOR TEST.
Pump Spacer 1	03/05/2011 19:26		6	20			61.0	FRESH WATER
Activity Description	Date/Time	Cht #	Rate bbl/min	Volume bbl		Pressure psig		Comments
				Stage	Total	Tubing	Casing	

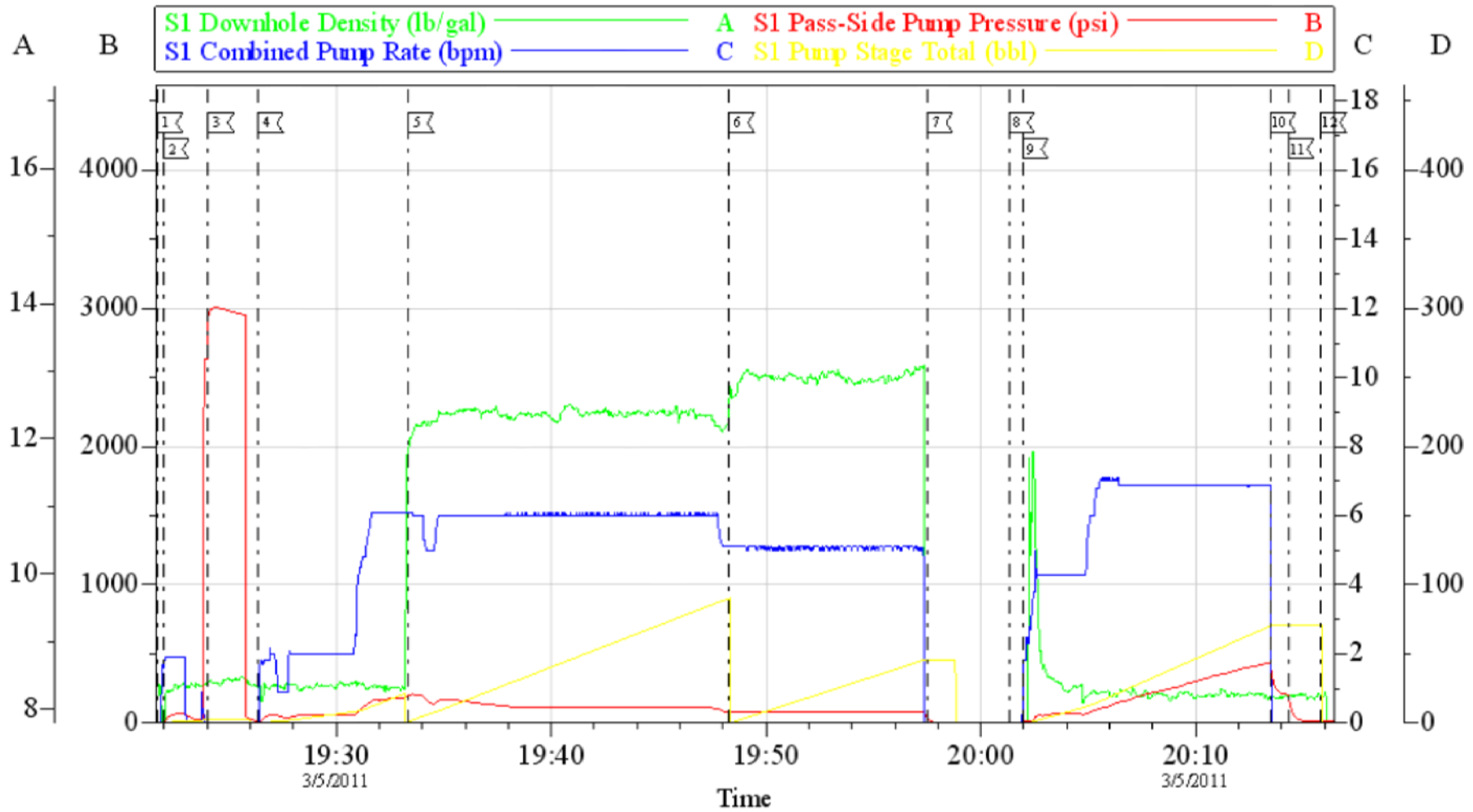
Pump Lead Cement	03/05/2011 19:33		6	98			181.0	231 SKS VERSACEM CMT TO BE MIXED AT 12.3 PPG, 2.38 YIELD, 13.75 GAL/SK, CMT TO BE WEIGHED VIA PRESSURE BALANCED MUD SCALES WET AND DRY SAMPLES SUBMITTED.
Pump Tail Cement	03/05/2011 19:48		6	46			99.0	122 SKS VERSACEM CMT TO BE MIXED AT 12.8 PPG, 2.38 YIELD, 11.75 GAL/SK, CMT TO BE WEIGHED VIA PRESSURE BALANCED MUD SCALES, WET AND DRY SAMPLES SUBMITTED,
Shutdown	03/05/2011 19:57							
Drop Plug	03/05/2011 20:01							PLUG LAUNCHED
Pump Displacement	03/05/2011 20:01		7	70			234.0	FRESH WATER
Shutdown	03/05/2011 20:13							SHUTDOWN AFTER 10 BBLs OF CEMENT TO SURFACE PER KENNY
Check Floats	03/05/2011 20:14							FLOATS HOLDING
End Job	03/05/2011 20:15							THANK YOU FOR USING HES LOGAN HUGENTOBLE AND CREW
Post-Job Safety Meeting (Pre Rig-Down)	03/05/2011 20:20							ALL HES EMPLOYEES
Rig-Down Equipment	03/05/2011 20:30							
Pre-Convoy Safety Meeting	03/05/2011 22:00							ALL HES EMPLOYEES
Crew Leave Location	03/05/2011 22:10							LOCATION CLEAN

Total Depth = 1560, Total pipe = 1528, Shoe Joint = 42.8, Mud Weight = 9.2# . Pumped the job offline. Shutdown before plug bumped. Only wanted 10 bbls of cement to surface. Removed plug container and quicklatch charges from ticket. Floats held.



**Thank you for using Grand Junction Halliburton.**

# NOBLE SURFACE



1 START JOB	19:21:40	2 PRIME LINES	19:21:58	3 PRESSURE TEST	19:24:03
4 PUMP H2O SPACER	19:26:21	5 PUMP LEAD CEMENT	19:33:21	6 PUMP TAIL CEMENT	19:48:17
7 SHUTDOWN	19:57:30	8 DROP PLUG	20:01:18	9 PUMP DISPLACEMENT	20:01:57
10 SHUTDOWN	20:13:29	11 CHECK FLOATS	20:14:19	12 END JOB	20:15:50

Customer: NOBLE	Job Date: 05-Mar-2011	Sales Order #: 8013744
Well Description: FED 20-11C	Job Type: SURFACE	ADC Used: YES
Company Rep: KENNY WILKERSON	Cement Supervisor: LOGAN HUGENTOBLER	Elite # / Operator: RYAN WYCKOFF