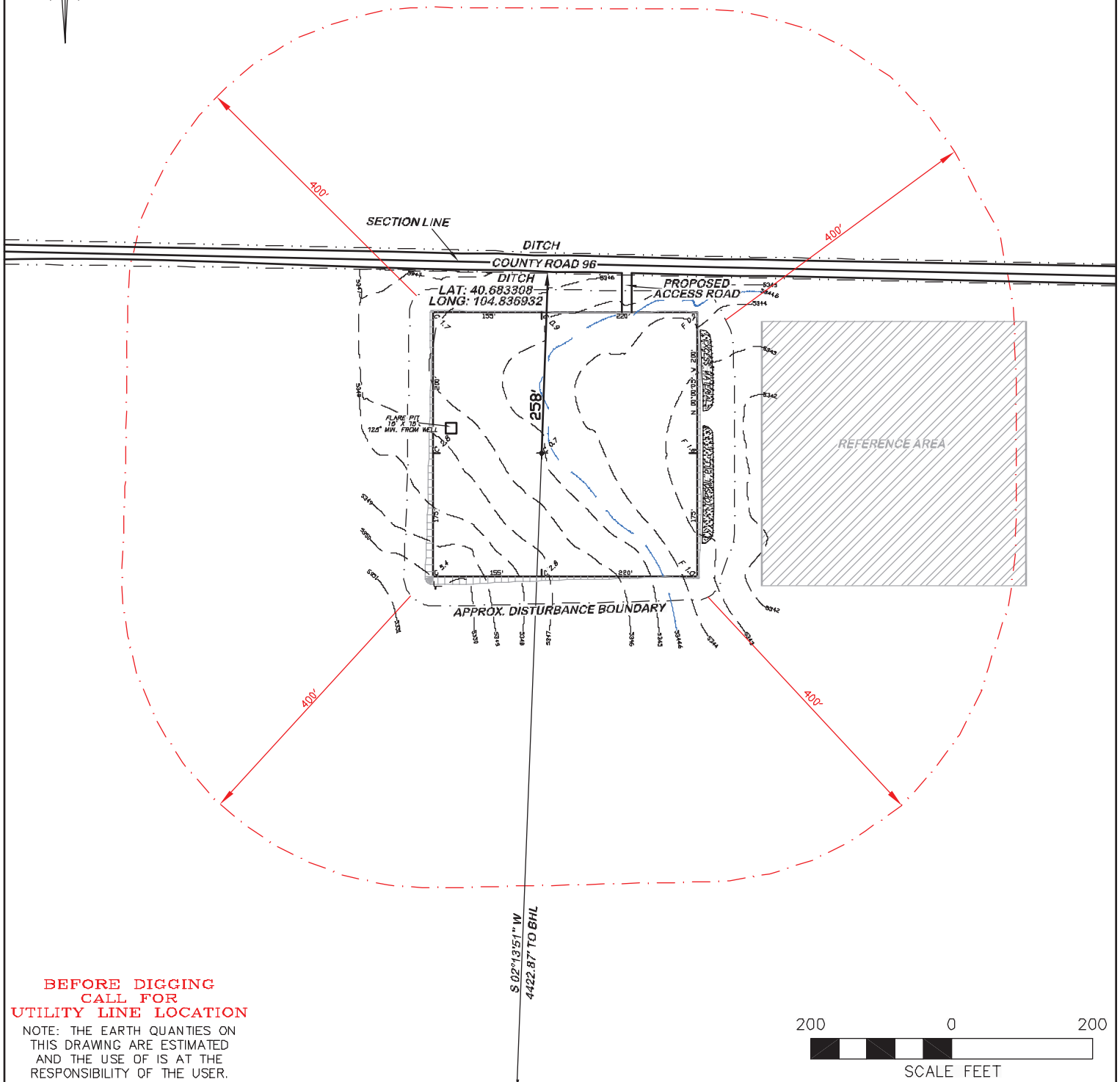


APPROXIMATE DISTURBANCE AREA: 4.7 ACRES±  
 0.9% GRADE ON A SOUTHEASTERLY SLOPE  
 UNGRADED ELEVATION: 5345.3'  
 FINISHED ELEVATION: 5344.6'

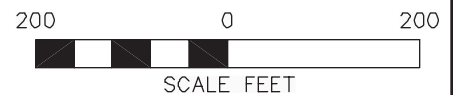
**2A ATTACHMENT**

**2**



**BEFORE DIGGING  
 CALL FOR  
 UTILITY LINE LOCATION**

NOTE: THE EARTH QUANTITIES ON  
 THIS DRAWING ARE ESTIMATED  
 AND THE USE OF IS AT THE  
 RESPONSIBILITY OF THE USER.



**RIFFIN & ASSOCIATES, INC.**  
 1414 ELK ST., ROCK SPRINGS, WY 82901

(307) 362-6028

**DRAWN: 4/26/11 - MMM**

**SCALE: 1" = 200'**

**REVISED: 6/06/11 - KRH**

**DRG JOB No. 18536**

**MISC. REVISIONS**

**EXHIBIT 2C**

**LOCATION DRAWING**

**CHESAPEAKE ENERGY, LLC.**  
**TU 12-8-67 1H**  
**SECTION 12, T8N, R67W**

**UNGRADED ELEVATION: 5345.3'**  
**FINISHED ELEVATION: 5344.6'**