

---

**NOBLE ENERGY INC E-BUSINESS**

---

**Double B Ranch 18-44D  
RULISON  
Garfield County , Colorado**

**Cement Surface Casing  
07-Mar-2011**

**Post Job Report**

*The Road to Excellence Starts with Safety*

<b>Sold To #:</b> 345242	<b>Ship To #:</b> 2819938	<b>Quote #:</b>	<b>Sales Order #:</b> 8017073
<b>Customer:</b> NOBLE ENERGY INC E-BUSINESS		<b>Customer Rep:</b> COLLVER, CHARLES	
<b>Well Name:</b> Double B Ranch		<b>Well #:</b> 18-44D	<b>API/UWI #:</b>
<b>Field:</b> RULISON	<b>City (SAP):</b> RIFLE	<b>County/Parish:</b> Garfield	<b>State:</b> Colorado
<b>Lat:</b> N 39.433 deg. OR N 39 deg. 26 min. 0.013 secs.		<b>Long:</b> W 107 deg. OR W -107 deg. 0 min. 0 secs.	
<b>Contractor:</b> H&P Drilling		<b>Rig/Platform Name/Num:</b> H&P 322	
<b>Job Purpose:</b> Cement Surface Casing			
<b>Well Type:</b> Development Well		<b>Job Type:</b> Cement Surface Casing	
<b>Sales Person:</b> METLI, MARSHALL		<b>Srvc Supervisor:</b> MUHLESTEIN, RYAN	<b>MBU ID Emp #:</b> 453609

**Job Personnel**

HES Emp Name	Exp Hrs	Emp #	HES Emp Name	Exp Hrs	Emp #	HES Emp Name	Exp Hrs	Emp #
BROWN, TRAVIS A	4	396848	JENKINS, DEMON Lashaun	4	457892	MUHLESTEIN, RYAN Herrick	40	453609
NICKLE, RYON	4	454759						

**Equipment**

HES Unit #	Distance-1 way	HES Unit #	Distance-1 way	HES Unit #	Distance-1 way	HES Unit #	Distance-1 way
10001431	60 mile	10296152C	60 mile	10741119	60 mile	10951244	60 mile
11381461	60 mile						

**Job Hours**

Date	On Location Hours	Operating Hours	Date	On Location Hours	Operating Hours	Date	On Location Hours	Operating Hours
03/07/2011	4	2						
<b>TOTAL</b>	<i>Total is the sum of each column separately</i>							

**Job**

**Job Times**

Formation Name	Formation Depth (MD)	Top	Bottom	Called Out	Date	Time	Time Zone
					06 - Mar - 2011	20:00	MST
<b>Form Type</b>			<b>BHST</b>	<b>On Location</b>	07 - Mar - 2011	01:00	MST
<b>Job depth MD</b>	1540. ft		<b>Job Depth TVD</b>	1540. ft	<b>Job Started</b>	07 - Mar - 2011	03:12
<b>Water Depth</b>			<b>Wk Ht Above Floor</b>	4. ft	<b>Job Completed</b>	07 - Mar - 2011	04:06
<b>Perforation Depth (MD)</b>	<b>From</b>		<b>To</b>		<b>Departed Loc</b>	07 - Mar - 2011	05:00

**Well Data**

Description	New / Used	Max pressure psig	Size in	ID in	Weight lbm/ft	Thread	Grade	Top MD ft	Bottom MD ft	Top TVD ft	Bottom TVD ft
OPEN HOLE SECTION				12.25				.	1540.		
SURFACE CASING	Unknown		8.625	7.921	32.		J-55	.	1506.		

**Sales/Rental/3<sup>rd</sup> Party (HES)**

Description	Qty	Qty uom	Depth	Supplier
R/A DENSOMETER W/CHART RECORDER,/JOB,ZI	1	JOB		
PORT. DAS W/CEMWIN;ACQUIRE W/HES, ZI	1	JOB		
ADC (AUTO DENSITY CTRL) SYS, /JOB,ZI	1	JOB		

**Tools and Accessories**

Type	Size	Qty	Make	Depth	Type	Size	Qty	Make	Depth	Type	Size	Qty	Make
Guide Shoe					Packer					Top Plug			
Float Shoe					Bridge Plug					Bottom Plug			
Float Collar					Retainer					SSR plug set			
Insert Float										Plug Container			
Stage Tool										Centralizers			

**Miscellaneous Materials**

Gelling Agt	Conc	Surfactant	Conc	Acid Type	Qty	Conc %
Treatment Fld	Conc	Inhibitor	Conc	Sand Type	Size	Qty

Fluid Data										
Stage/Plug #: 1										
Fluid #	Stage Type	Fluid Name	Qty	Qty uom	Mixing Density lbm/gal	Yield ft <sup>3</sup> /sk	Mix Fluid Gal/sk	Rate bbl/min	Total Mix Fluid Gal/sk	
1	Fresh Water Spacer		20.00	bbl	8.4	.0	.0	6.0		
2	VersaCem Lead Cement	VERSACEM (TM) SYSTEM (452010)	221.0	sacks	12.3	2.38	13.75	6.0	13.75	
3	VersaCem Tail Cement	VERSACEM (TM) SYSTEM (452010)	118.0	sacks	12.8	2.11	11.76	6.0	11.76	
11.76 Gal		FRESH WATER								
4	Displacement		89.00	bbl	8.4	.0	.0	6.0		
Calculated Values			Pressures			Volumes				
Displacement	89.4	Shut In: Instant		Lost Returns	0	Cement Slurry	138.1	Pad		
Top Of Cement	SURFACE	5 Min		Cement Returns	10	Actual Displacement	70	Treatment		
Frac Gradient		15 Min		Spacers	20	Load and Breakdown		Total Job	228.1	
Rates										
Circulating	7	Mixing	6	Displacement	6	Avg. Job	6			
Cement Left In Pipe	Amount	318.1 ft	Reason	CO REP. REQ.						
Frac Ring # 1 @	ID	Frac ring # 2 @	ID	Frac Ring # 3 @	ID	Frac Ring # 4 @	ID			
The Information Stated Herein Is Correct				Customer Representative Signature						

*The Road to Excellence Starts with Safety*

<b>Sold To #:</b> 345242	<b>Ship To #:</b> 2819938	<b>Quote #:</b>	<b>Sales Order #:</b> 8017073
<b>Customer:</b> NOBLE ENERGY INC E-BUSINESS		<b>Customer Rep:</b> COLLVER, CHARLES	
<b>Well Name:</b> Double B Ranch		<b>Well #:</b> 18-44D	<b>API/UWI #:</b>
<b>Field:</b> RULISON	<b>City (SAP):</b> RIFLE	<b>County/Parish:</b> Garfield	<b>State:</b> Colorado
<b>Legal Description:</b>			
<b>Lat:</b> N 39.433 deg. OR N 39 deg. 26 min. 0.013 secs.		<b>Long:</b> W 107 deg. OR W -107 deg. 0 min. 0 secs.	
<b>Contractor:</b> H&P Drilling		<b>Rig/Platform Name/Num:</b> H&P 322	
<b>Job Purpose:</b> Cement Surface Casing			<b>Ticket Amount:</b>
<b>Well Type:</b> Development Well		<b>Job Type:</b> Cement Surface Casing	
<b>Sales Person:</b> METLI, MARSHALL		<b>Srvc Supervisor:</b> MUHLESTEIN, RYAN	<b>MBU ID Emp #:</b> 453609

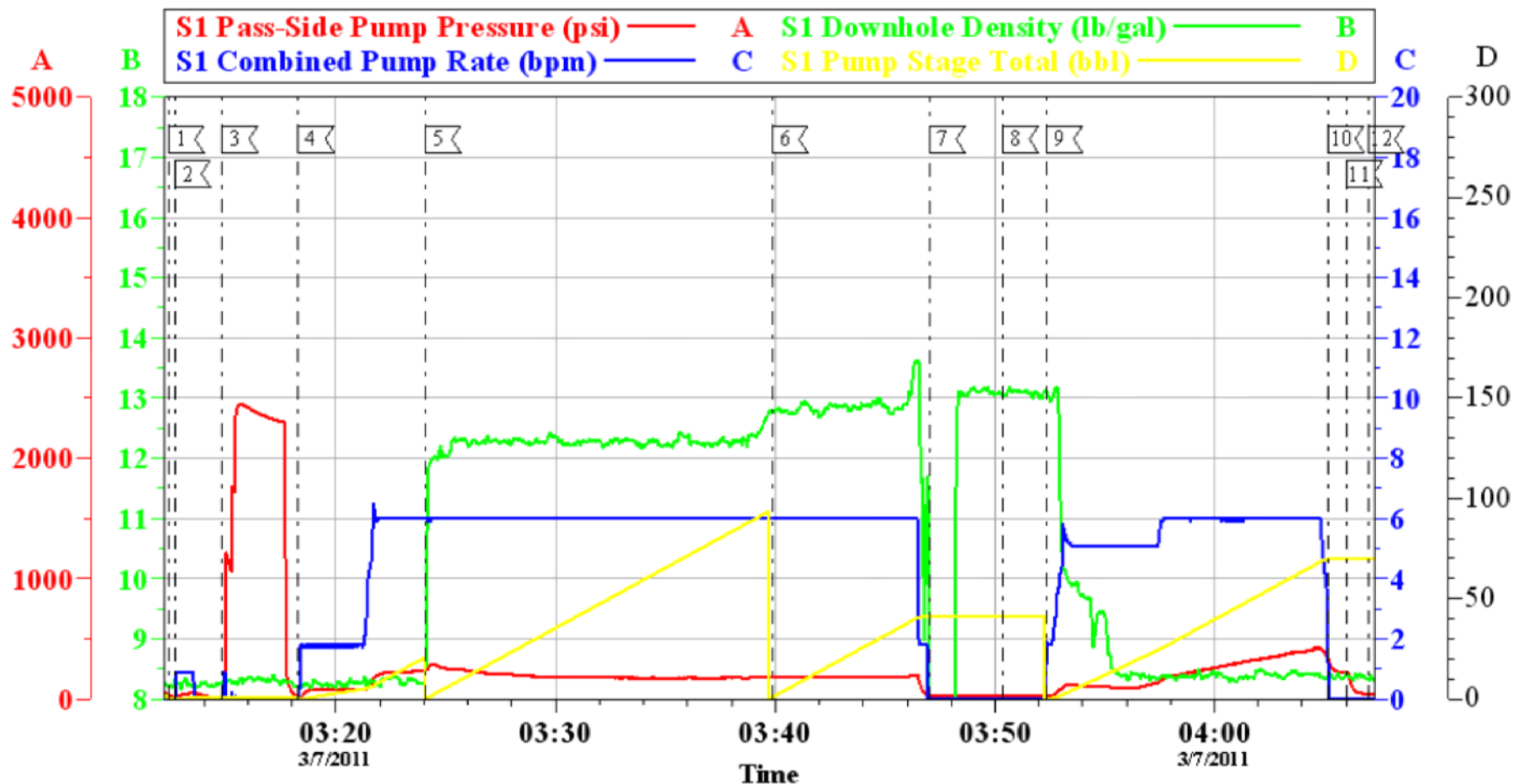
Activity Description	Date/Time	Cht #	Rate bbl/min	Volume bbl		Pressure psig		Comments
				Stage	Total	Tubing	Casing	
Call Out	03/06/2011 20:00							
Pre-Convoy Safety Meeting	03/06/2011 22:30							WITH ALL HES PERSONNEL SAFE DRIVING PRACTICES AND TRAVEL ROUTE REVIEWED
Arrive at Location from Service Center	03/07/2011 01:00							RIG STILL RUNNING CASING
Assessment Of Location Safety Meeting	03/07/2011 01:10							WITH ALL HES PERSONNEL
Other	03/07/2011 01:15							SPOT EQUIPMENT
Pre-Rig Up Safety Meeting	03/07/2011 01:25							WITH ALL HES PERSONNEL
Rig-Up Equipment	03/07/2011 01:30							1 HT 400 PUMP, 1 660 BULK TRUCK, 1 F-450 PICK-UP, 1 CIRC. SWAGE, 2" IRON TO CELLAR
Pre-Job Safety Meeting	03/07/2011 02:30							WITH ALL HES PERSONNEL, RIG CREW AND CO REP
Start Job	03/07/2011 03:12							TD 1540', TP 1506', FC 11467.5', SJ 38.5', CASING 8.625" 32# J-55, 12.25" HOLE
Pump Water	03/07/2011 03:12		2	2			85.0	FRESH H2O, RIG CIRC. 1 HR PRIOR TO CMT JOB, 7 BPM, 240 PSI. MUD REPORT 9.2 PPG, PV 15 YP 14
Test Lines	03/07/2011 03:14						2460.0	HELD PRESSURE 2 MIN NO LEAKS
Pump Spacer 1	03/07/2011 03:18		6	20			240.0	FRESH H2O

Activity Description	Date/Time	Cht #	Rate bbl/min	Volume bbl		Pressure psig		Comments
				Stage	Total	Tubing	Casing	
Pump Lead Cement	03/07/2011 03:24		6	93.7			295.0	221 SKS 12.3 PPG 2.38 FT3/SK 13.75 GAL/SK WEIGHED VERIFIED VIA MUD SCALES WET AND DRY SAMPLES SUBMITTED
Pump Tail Cement	03/07/2011 03:39		6	44.4			205.0	118 SKS 12.8 PPG 2.11 FT3/SK 11.75 GAL/SK WEIGHED VERIFIED VIA MUD SCALES WET AND DRY SAMPLES SUBMITTED
Shutdown	03/07/2011 03:47							WASH UP ON TOP OF PLUG
Drop Top Plug	03/07/2011 03:50							VERIFY PLUG LAUNCHED
Pump Displacement	03/07/2011 03:52		6	70			430.0	CMT RETURNS 60 BBL INTO DIS, 10 BBL CMT TO SURFACE
Shutdown	03/07/2011 04:05		2	70			350.0	PER CO REP REQ. SHUT DOWN 19 BBL PRIOR TO CALCULATED DISPLACEMENT, 318.1' CMT LEFT IN CASING
Other	03/07/2011 04:06							OPEN RELEASE, FLOATS HOLDING, GOOD RETURNS THROUGHOUT JOB
End Job	03/07/2011 04:07							CREW ON LOC AT 0100 END JOB 0406. NO ADD HRS, DERRICK CHARGE, PLUG CONTAINER, QUICK LATCH OR SUGAR USED.
Pre-Rig Down Safety Meeting	03/07/2011 04:15							WITH ALL HES PERSONNEL
Rig-Down Equipment	03/07/2011 04:30							
Pre-Convoy Safety Meeting	03/07/2011 04:45							WITH ALL HES PERSONNEL

Activity Description	Date/Time	Cht #	Rate bbl/ min	Volume bbl		Pressure psig		Comments
				Stage	Total	Tubing	Casing	
Crew Leave Location	03/07/2011 05:00							THANK YOU FOR USING HALLIBURTON CEMENT DEPARTMENT. RYAN MUHLESTEIN AND CREW

# NOBLE

## DOUBLE B RANCH 18-44D 8 5/8" SURFACE CASING



Local Event Log								
1	STARTJOB	03:12:21	2	FILL LINES	03:12:38	3	TEST LINES	03:14:49
4	PUMP H2O SPACER	03:18:17	5	PUMP LEAD CMT	03:24:03	6	PUMP TAIL CMT	03:39:51
7	SHUT DOWN	03:47:01	8	DROP PLUG	03:50:21	9	PUMP DISPLACEMENT	03:52:22
10	SHUT DOWN	04:05:11	11	OPEN RELEASE	04:06:01	12	END JOB	04:06:59