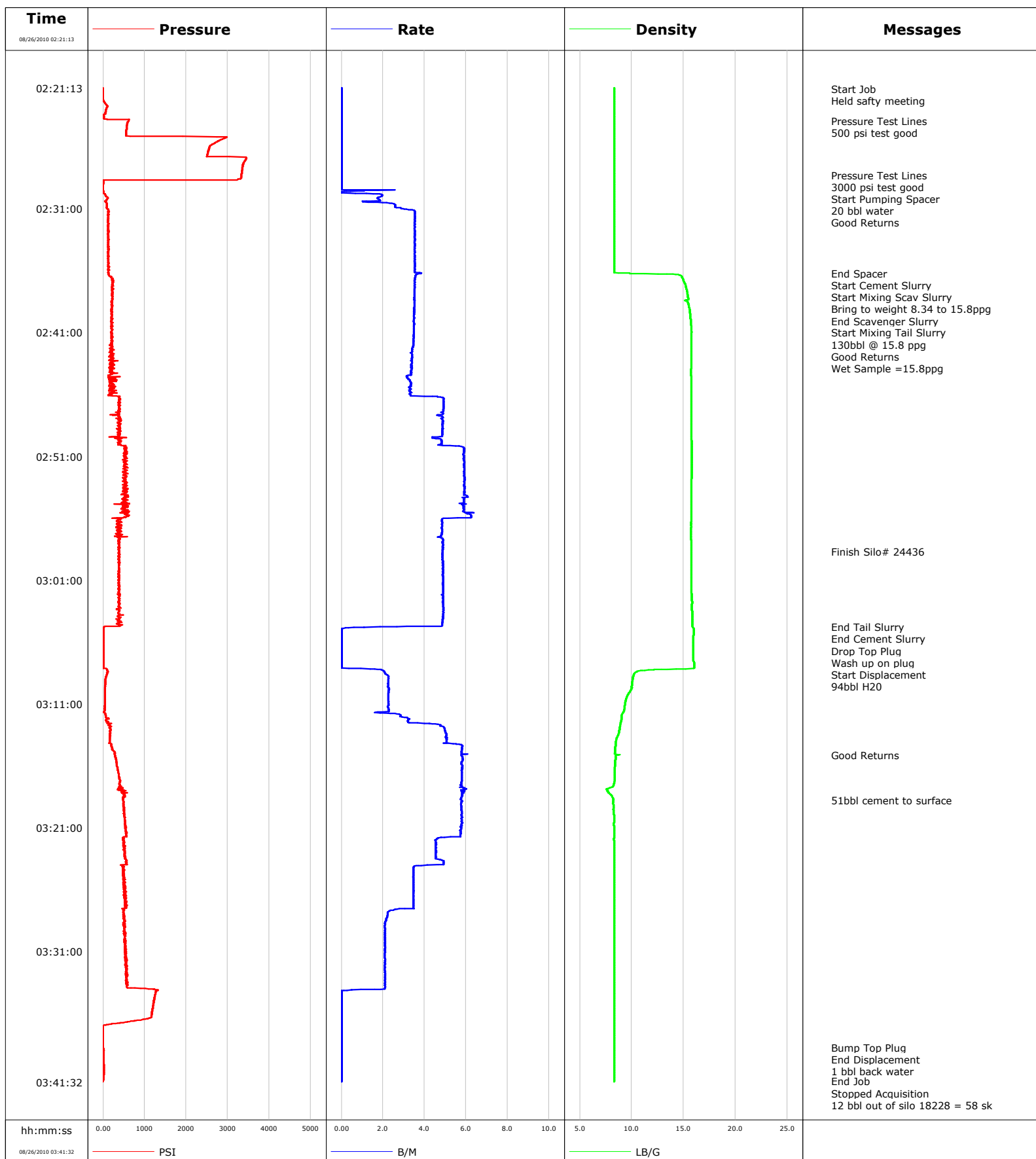


Well Twin Creek 12-1A1
Field Mamm Creek
Engineer Terry Borg
Country United States

Client Encana
SIR No. B2IJ-00215
Job Type 9 5/8" Surface
Job Date 08-25-2010

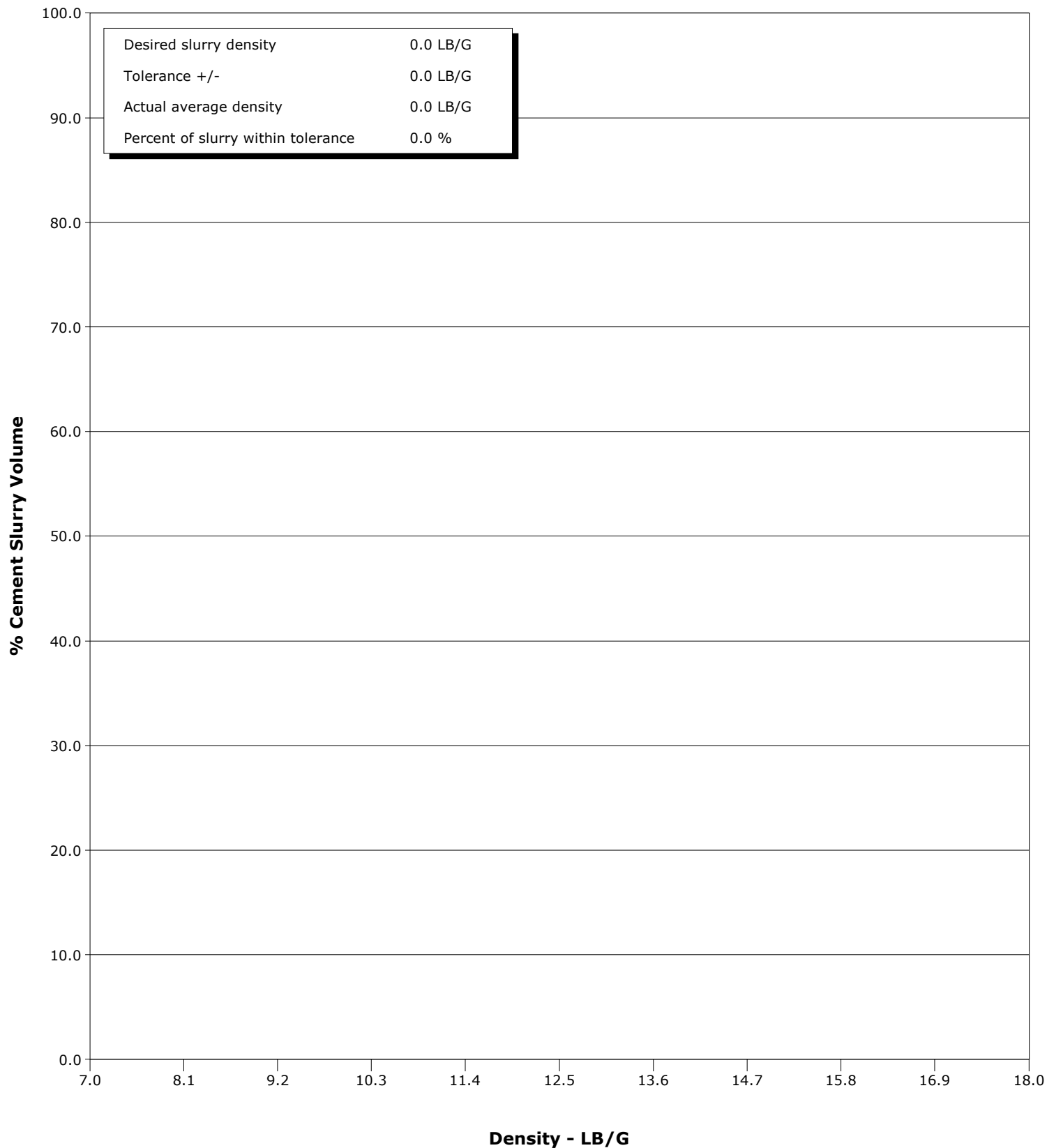


Schlumberger Cementing Qa/Qc Density Report

Well Twin Creek 12-1A1
Field Mamm Creek
Engineer Terry Borg
Country United States

Client Encana
SIR No. B2IJ-00215
Job Type 9 5/8" Surface
Job Date 08-25-2010

Cement Slurry - 08/26/2010 02:36:16 to 08/26/2010 03:04:48



Well			Field		Job Start		Customer		Job Number	
Twin Creek 12-1A1			Mamm Creek		Aug/25/2010		Encana		B2IJ-00215	
Date	Time 24-hr clock	Treating Pressure PSI	Flow Rate B/M	Density LB/G	Volume BBL	Message				
08/26/2010	02:31:21	130	3.5	8.31	3.9					
08/26/2010	02:33:47	121	3.5	8.31	12.5					
08/26/2010	02:36:12					End Spacer				
08/26/2010	02:36:12	122	3.9	8.75	21.0					
08/26/2010	02:36:16					Start Cement Slurry				
08/26/2010	02:36:16	139	3.7	12.53	21.3					
08/26/2010	02:36:28					Start Mixing Scav Slurry				
08/26/2010	02:36:28	178	3.6	14.82	22.0					
08/26/2010	02:36:30					Bring to weight 8.34 to 15.8ppg				
08/26/2010	02:36:30	212	3.6	14.83	22.1					
08/26/2010	02:37:07	236	3.5	15.15	24.3					
08/26/2010	02:39:24					End Scavenger Slurry				
08/26/2010	02:39:24	211	3.5	15.61	32.3					
08/26/2010	02:39:26					Start Mixing Tail Slurry				
08/26/2010	02:39:26	201	3.5	15.61	32.5					
08/26/2010	02:39:51					130bbl @ 15.8 ppg				
08/26/2010	02:39:51	202	3.5	15.66	33.9					
08/26/2010	02:39:52					Good Returns				
08/26/2010	02:39:52	238	3.5	15.66	34.0					
08/26/2010	02:39:53					Wet Sample =15.8ppg				
08/26/2010	02:39:53	226	3.5	15.66	34.0					
08/26/2010	02:40:27	213	3.5	15.72	36.0					
08/26/2010	02:43:47	224	3.4	15.72	47.5					
08/26/2010	02:47:07	375	4.9	15.74	60.0					
08/26/2010	02:50:27	540	5.9	15.80	76.5					
08/26/2010	02:53:47	479	5.9	15.74	96.2					
08/26/2010	02:57:07	413	4.8	15.69	114.8					
08/26/2010	02:58:41					Finish Silo# 24436				
08/26/2010	02:58:41	398	4.9	15.73	122.4					
08/26/2010	03:00:27	365	4.9	15.73	131.0					
08/26/2010	03:03:47	386	4.9	15.82	147.3					
08/26/2010	03:04:47					End Tail Slurry				
08/26/2010	03:04:47	29	1.9	15.87	152.1					
08/26/2010	03:04:48					End Cement Slurry				
08/26/2010	03:04:48	14	1.1	15.90	152.1					
08/26/2010	03:04:49					Drop Top Plug				
08/26/2010	03:04:49					Wash up on plug				
08/26/2010	03:04:49	13	1.1	15.90	152.2					
08/26/2010	03:04:50					Start Displacement				
08/26/2010	03:04:50	11	0.6	15.92	152.2					
08/26/2010	03:07:07	7	0.0	15.92	152.2					
08/26/2010	03:08:31					94bbl H2O				
08/26/2010	03:08:31	93	2.1	10.29	152.9					
08/26/2010	03:10:27	41	2.3	9.53	157.3					
08/26/2010	03:13:47	165	5.1	8.56	168.6					
08/26/2010	03:15:08					Good Returns				
08/26/2010	03:15:08	278	5.8	8.73	176.1					
08/26/2010	03:17:07	398	5.8	8.34	187.7					
08/26/2010	03:18:46					51bbl cement to surface				
08/26/2010	03:18:46	482	5.8	8.24	197.3					
08/26/2010	03:20:27	520	5.8	8.30	207.0					
08/26/2010	03:23:47	557	4.9	8.30	223.8					
08/26/2010	03:27:07	553	3.5	8.30	235.7					
08/26/2010	03:30:27	535	2.1	8.30	243.5					
08/26/2010	03:33:47	561	2.1	8.30	250.5					

Well			Field		Job Start	Customer		Job Number
Twin Creek 12-1A1			Mamm Creek		Aug/25/2010	Encana		B2IJ-00215
Date	Time 24-hr clock	Treating Pressure PSI	Flow Rate B/M	Density LB/G	Volume BBL	Message		
08/26/2010	03:37:07	-2	0.0	8.31	251.1			
08/26/2010	03:38:44					Bump Top Plug		
08/26/2010	03:38:44	-0	0.0	8.31	251.1			
08/26/2010	03:38:48					End Displacement		
08/26/2010	03:38:48	0	0.0	8.31	251.1			
08/26/2010	03:38:51					1 bbl back water		
08/26/2010	03:38:51	2	0.0	8.31	251.1			
08/26/2010	03:40:27	19	0.0	8.31	251.1			
08/26/2010	03:41:28					End Job		
08/26/2010	03:41:28	-4	0.0	8.31	251.1			
08/26/2010	03:41:36					Stopped Acquisition		
08/26/2010	03:41:36					12 bbl out of silo 18228 = 58 sk		

Post Job Summary

Average Pump Rates, bbl/min					Volume of Fluid Injected, bbl				
Slurry 4.1	N2	Mud 0.0	Maximum Rate 6.4		Total Slurry 130.0	Mud 0.0	Spacer 200.0	N2	
Treating Pressure Summary, psi					Breakdown Fluid				
Maximum 3452	Final 1500	Average 466	Bump Plug to 1500	Breakdown	Type H2O	Volume 264.0 bbl	Density 8.34 lb/gal		
Avg. N2 Percent		Designed Slurry Volume 130.0 bbl		Displacement 99.0 bbl		Mix Water Temp 70 degF		Cement Circulated to Surface? <input checked="" type="checkbox"/>	Volume 51.0 bbl
								Washed Thru Perfs <input type="checkbox"/>	To
Customer or Authorized Representative Robert Tate				Schlumberger Supervisor Terry Borg			Circulation Lost <input type="checkbox"/>	Job Completed <input checked="" type="checkbox"/>	
							-	-	