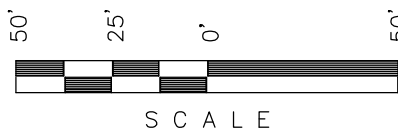


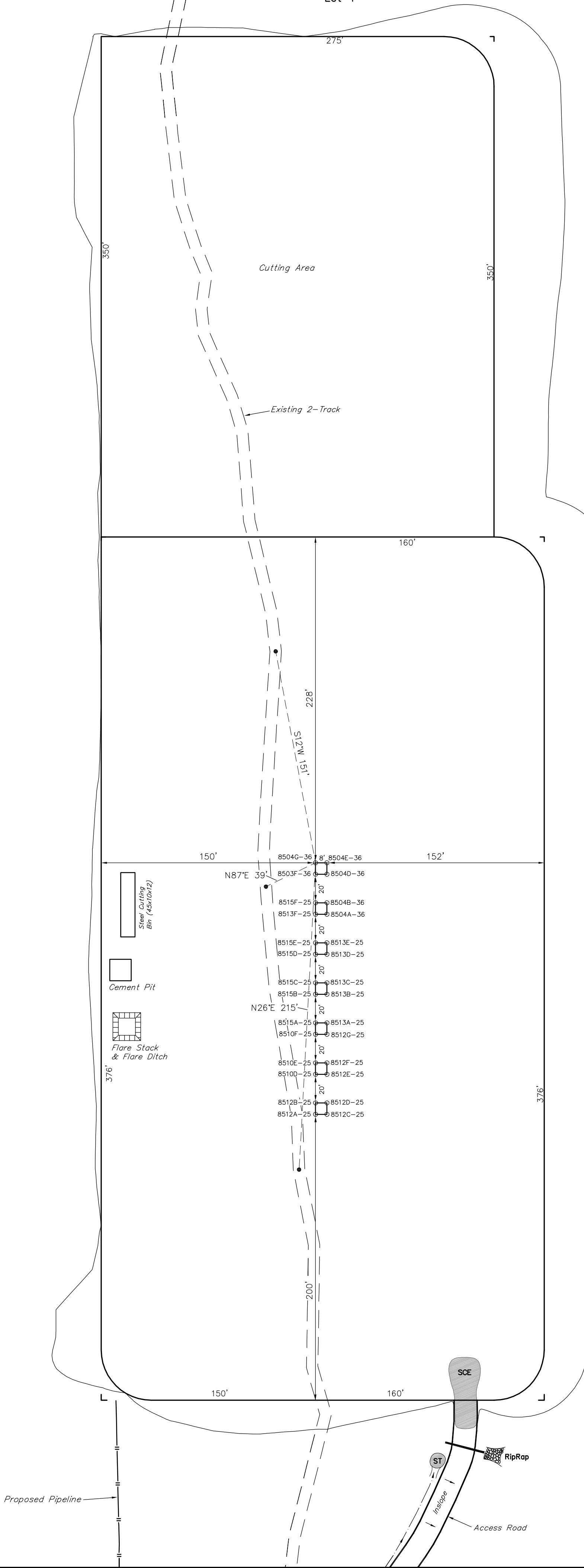
Encana OIL & GAS (USA) INC.
ADDENDUM TO LEGAL PLAT FOR
WELL PAD D36 496
SECTION 36, T4S, R96W, 6th P.M.
Lot 4



Sheet 1yy of 11



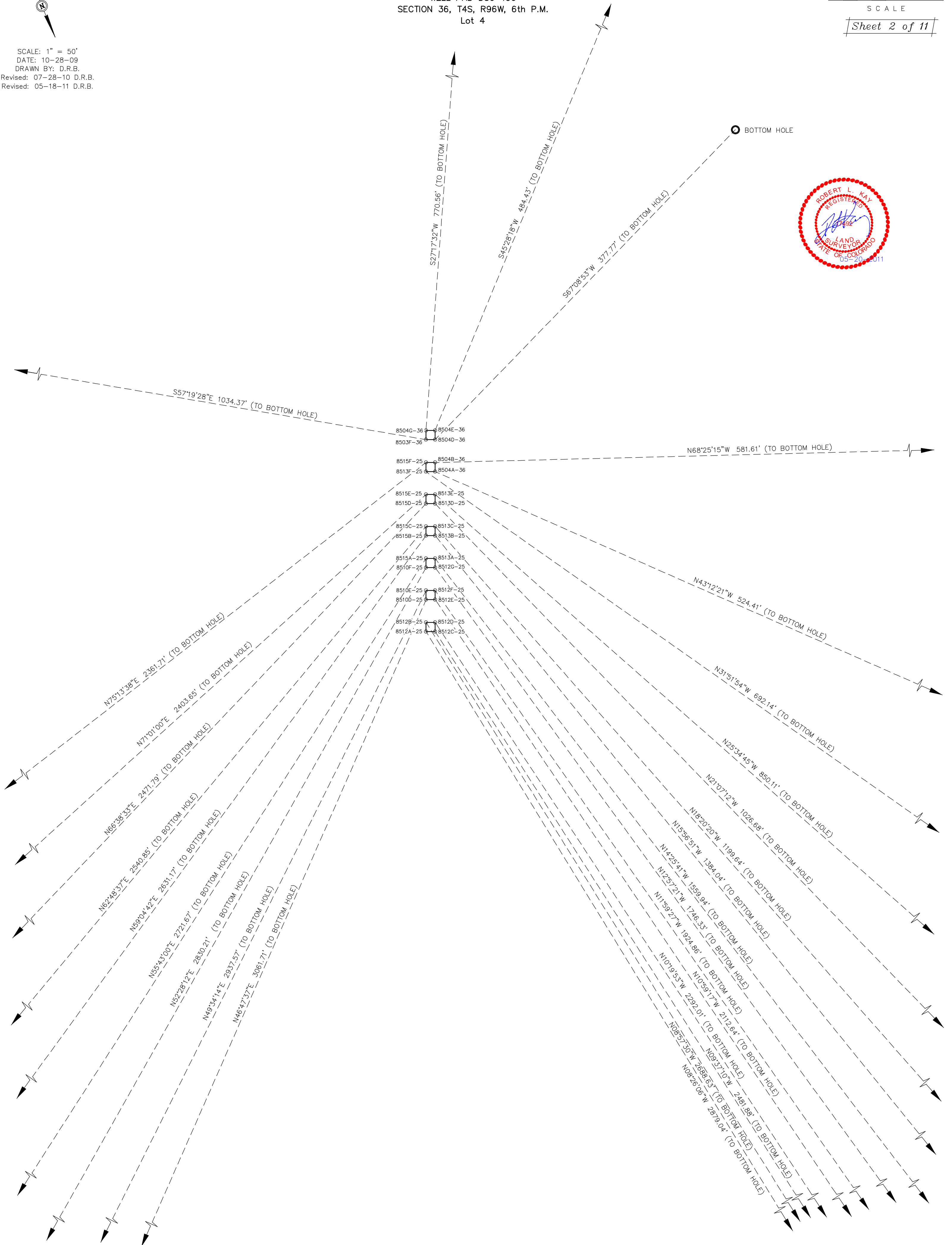
SCALE: 1" = 50'
DATE: 08-03-09
DRAWN BY: D.R.B.
Revised: 08-17-09 D.R.B.
Revised: 10-28-09 D.R.B.
Revised: 07-28-10 D.R.B.
Revised: 05-18-11 D.R.B.



SWMP LEGEND:
SCE - STABILIZED
CONSTRUCTION
ENTRANCE
ST - SEDIMENT TRAP

WELL PAD D36 496
SECTION 36, T4S, R96W, 6th P.M.
Lot 4

Sheet 2 of 11



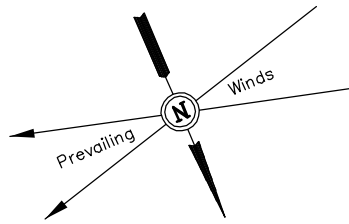
Encana OIL & GAS (USA) INC.

CONSTRUCTION LAYOUT FOR

WELL PAD D36 496

SECTION 36, T4S, R96W, 6th P.M.

Lot 4



SCALE: 1" = 50'

DATE: 08-03-09

DRAWN BY: D.R.B.

Revised: 08-17-09 D.R.B.

Revised: 08-31-09 D.R.B.

Revised: 10-28-09 D.R.B.

Revised: 07-28-10 D.R.B.

Revised: 05-18-11 D.R.B.



SCALE

Sheet 3 of 11

Sta. 9+54



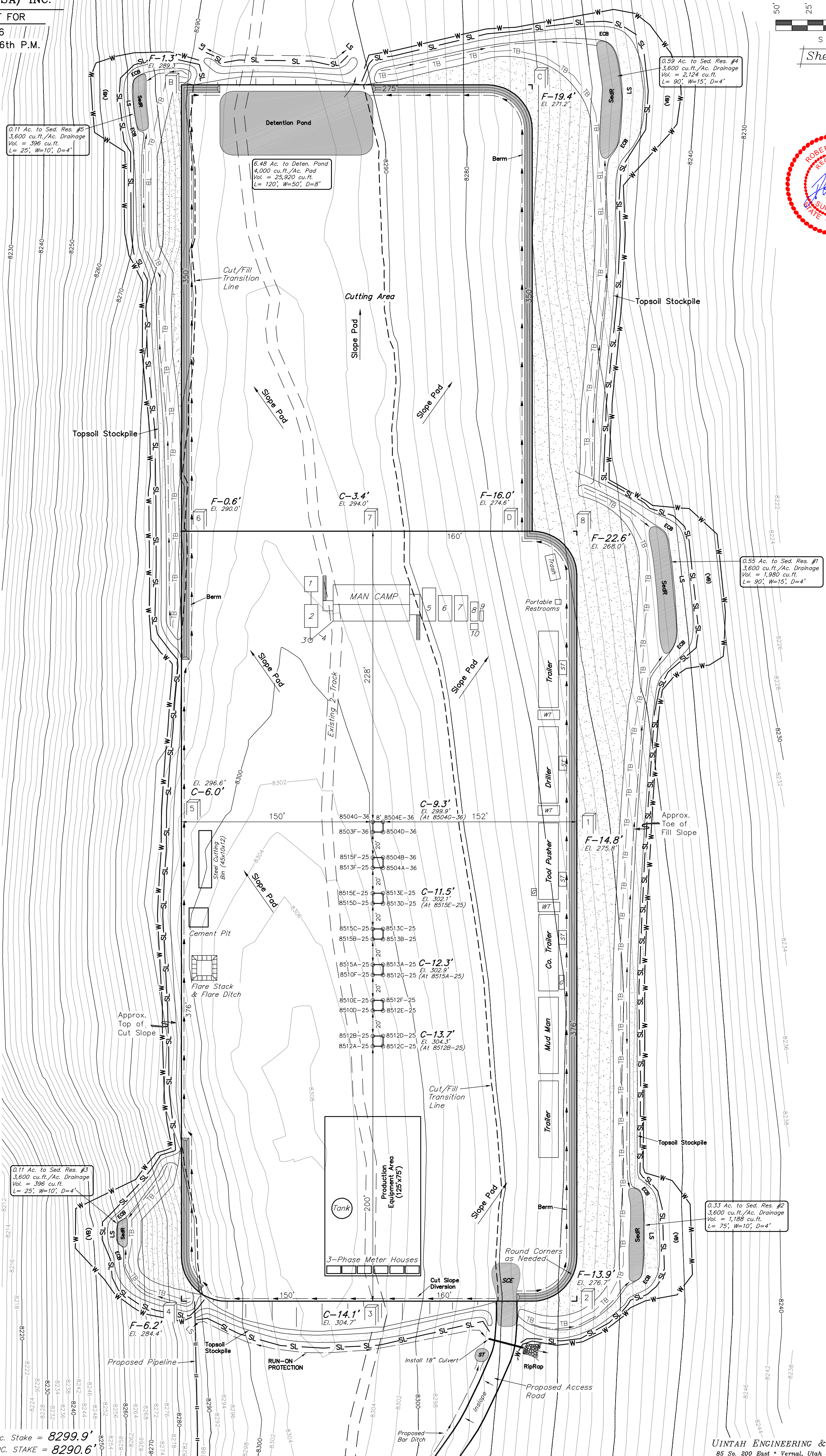
Sta. 7+79

Sta. 6+04

Sta. 3+76

Sta. 1+85

Sta. 0+00



SWMP LEGEND:
 ECB - EROSION CONTROL BLANKET
 LS - LEVEL SPREADER
 SCE - STABILIZED CONSTRUCTION ENTRANCE
 SedR - SEDIMENT RESERVOIR
 SL - SLASH
 ST - SEDIMENT TRAP
 TB - TOE BERM
 VB - VEGETATED BUFFER
 W - WATTLE

LEGEND:
 1 - OVERFLOW
 2 - SEWER TANK
 3 - LIFT STATION
 4 - SEWER LINE
 5 - WATER TANK
 6 - FREEZER
 7 - STORAGE
 8 - GENERATOR
 9 - FUEL
 10 - TRANSFORMER

NOTE:
 Wattle to be installed 25' downhill of slash and topsoil stockpile.

LEGEND:
 ST - Septic Tank
 G - Generator
 WT - Water Tank

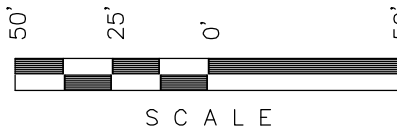
Elev. Ungraded Ground At 8515D-25 Loc. Stake = 8299.9'
 FINISHED GRADE ELEV. AT 8515D-25 LOC. STAKE = 8290.6'

UINTAH ENGINEERING & LAND SURVEYING
 85 So. 200 East • Vernal, Utah 84078 • (435) 789-1017

Encana OIL & GAS (USA) INC.

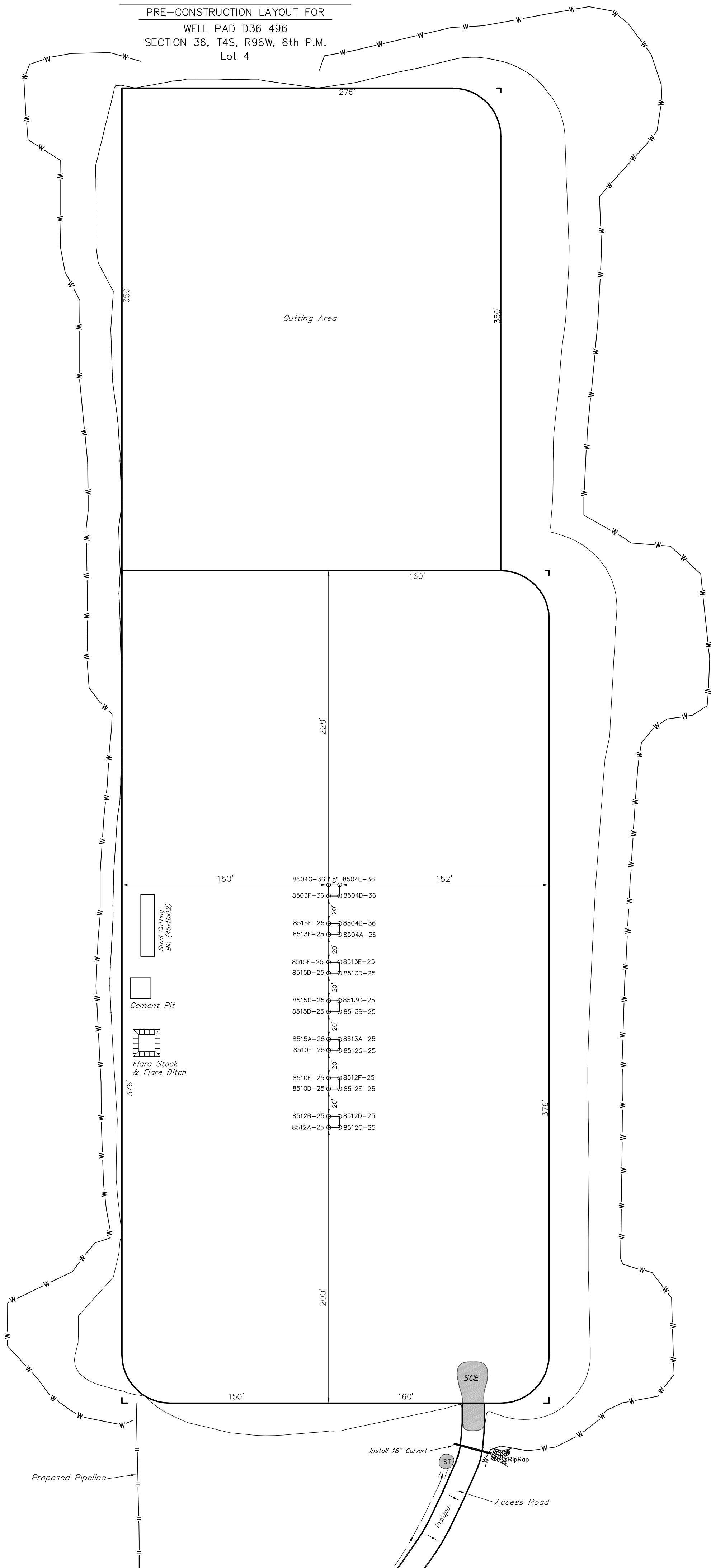
PRE-CONSTRUCTION LAYOUT FOR

WELL PAD D36 496
SECTION 36, T4S, R96W, 6th P.M.
Lot 4



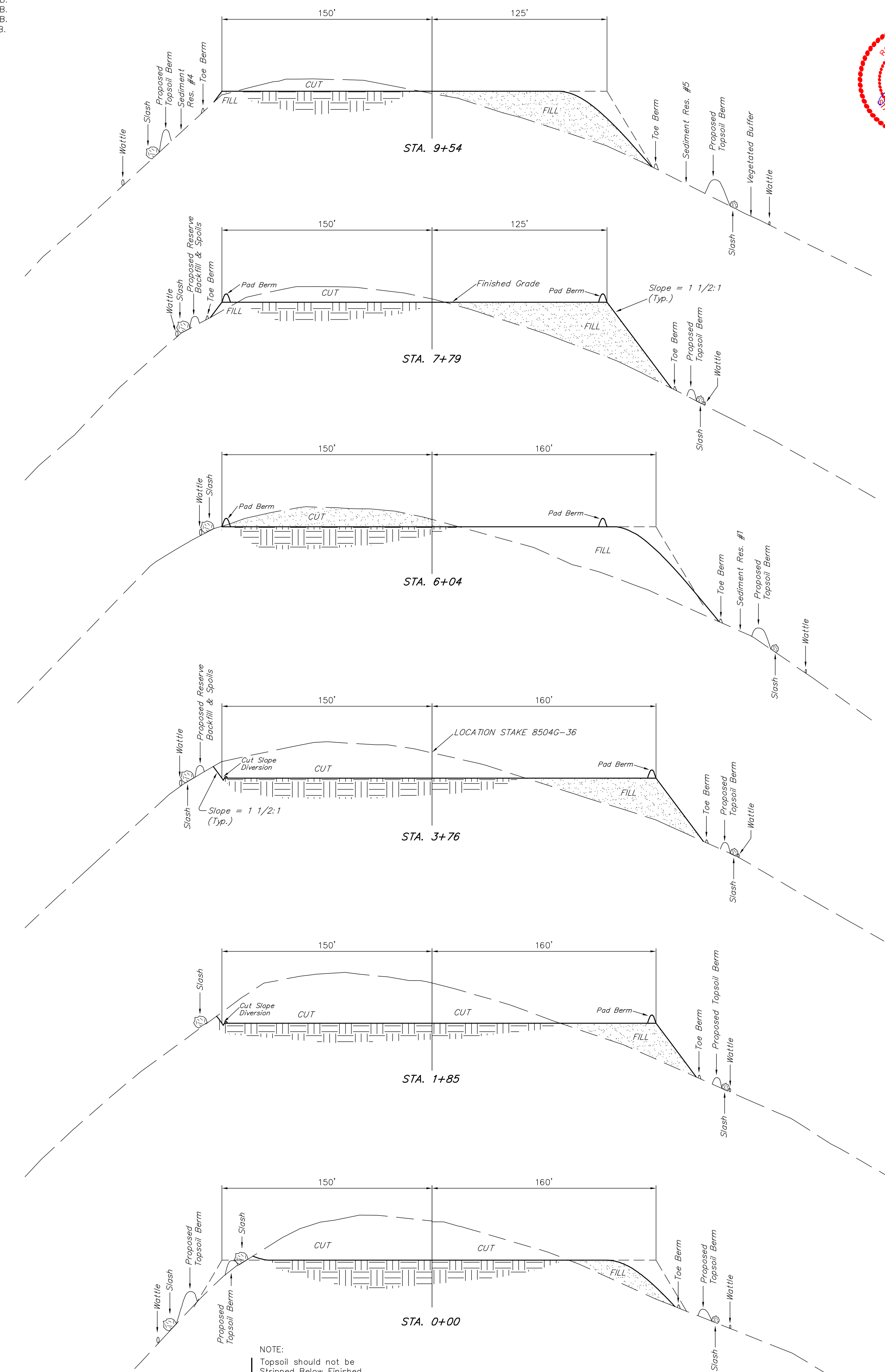
Sheet 3a of 11

SCALE: 1" = 80'
DATE: 08-03-09
DRAWN BY: D.R.B.
Revised: 08-17-09 D.R.B.
Revised: 10-28-09 D.R.B.
Revised: 07-28-10 D.R.B.
Revised: 05-18-11 D.R.B.



SWMP LEGEND:
SCE - STABILIZED
CONSTRUCTION
ENTRANCE
ST - SEDIMENT TRAP
W - WATTLE

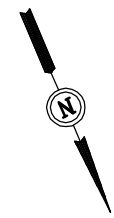
DATE: 08-03-09
DRAWN BY: D.R.B.
Revised: 08-31-09 D.R.B.
Revised: 10-28-09 D.R.B.
Revised: 07-28-10 D.R.B.
Revised: 05-18-11 D.R.B.



APPROXIMATE YARDAGES

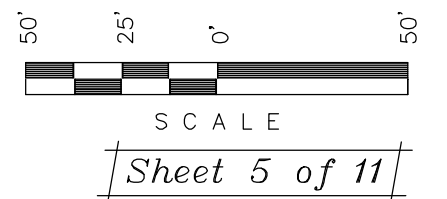
(6") Topsoil Stripping	= 12,920 Cu. Yds.
Remaining Location	= 49,030 Cu. Yds.
TOTAL CUT	= 61,950 CU.YDS.
FILL	= 49,030 CU.YDS.

EXCESS MATERIAL	= 12,920 Cu. Yds.
Topsoil	= 12,920 Cu. Yds.
EXCESS UNBALANCE (After Interim Rehabilitation)	= 0 Cu. Yds.



SCALE: 1" = 50'
DATE: 08-03-09
DRAWN BY: D.R.B.
Revised: 08-17-09 D.R.B.
Revised: 10-28-09 D.R.B.
Revised: 07-28-10 D.R.B.
Revised: 05-18-11 D.R.B.

Encana OIL & GAS (USA) INC.
TYPICAL RIG LAYOUT FOR
WELL PAD D36 496
SECTION 36, T4S, R96W, 6th P.M.
Lot 4



LEGEND:

- 1 - OVERFLOW
- 2 - SEWER TANK
- 3 - LIFT STATION
- 4 - SEWER LINE
- 5 - WATER TANK
- 6 - FREEZER
- 7 - STORAGE
- 8 - GENERATOR
- 9 - FUEL
- 10 - TRANSFORMER

NOTE:

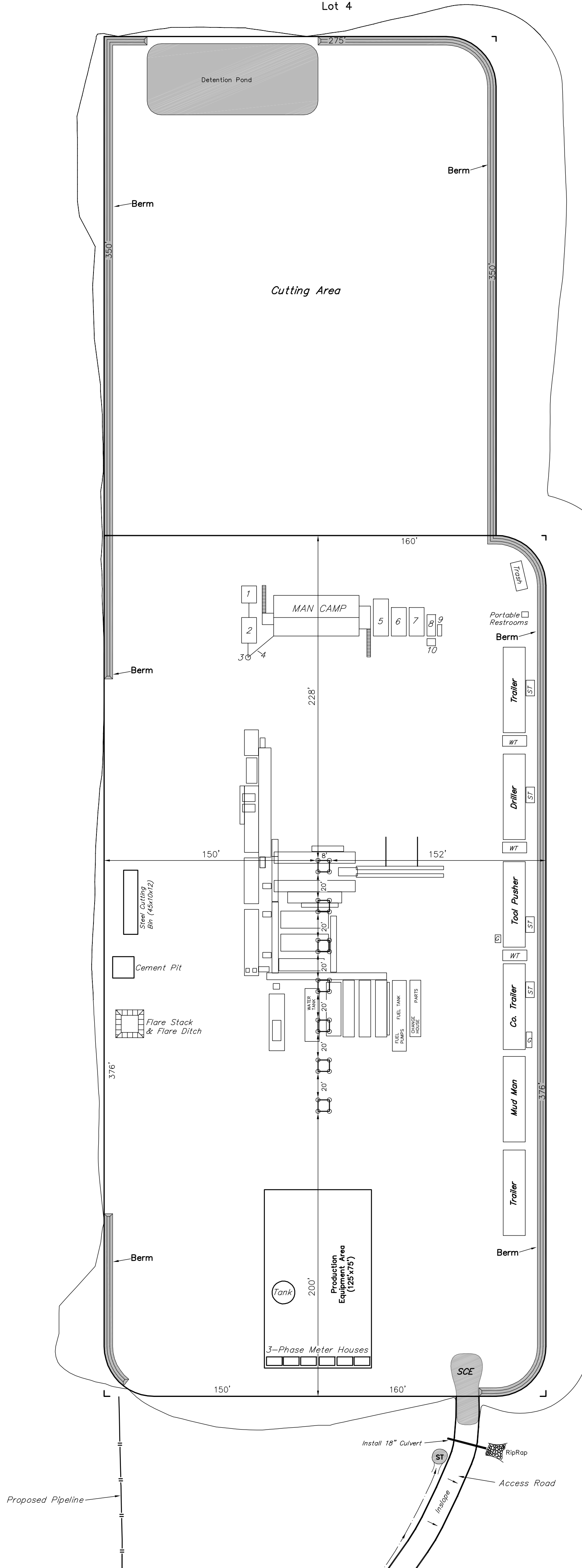
Flare Pit is to be located a min. of 100' from the Well Head.

LEGEND:

- ST - Septic Tank
- G - Generator
- WT - Water Tank

SWMP LEGEND:

- SCE - STABILIZED CONSTRUCTION ENTRANCE
- ST - SEDIMENT TRAP



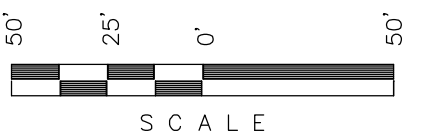
Encana OIL & GAS (USA) INC.

PRODUCTION SCHEMATIC FOR

WELL PAD D36 496
SECTION 36, T4S, R96W, 6th P.M.
Lot 4



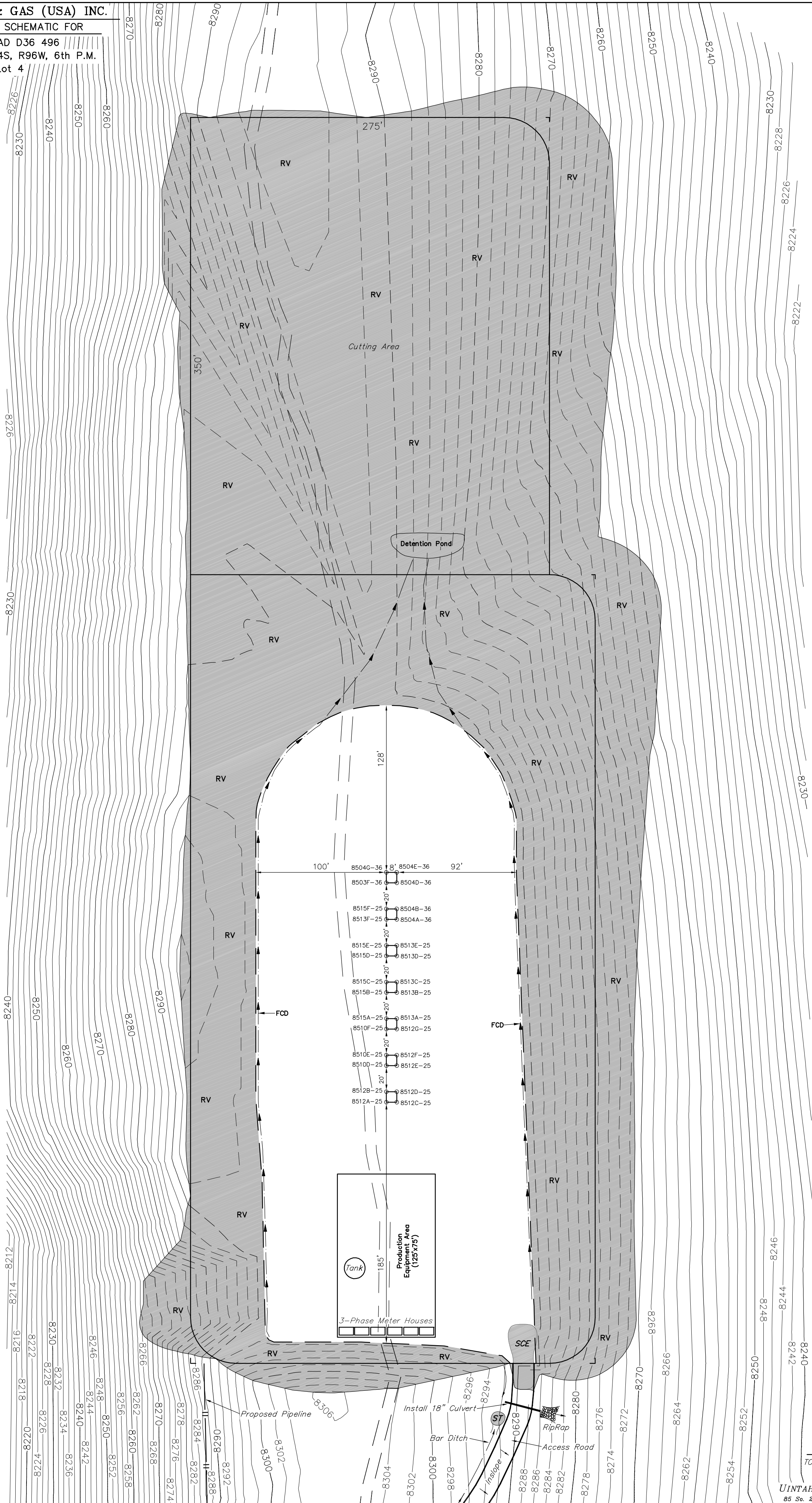
SCALE: 1" = 50'
DATE: 07-28-10
DRAWN BY: D.R.B.
Revised: 05-18-11 D.R.B.



Sheet 6 of 12



SWMP LEGEND:
FCD - FLOW CONTROL DITCH
RV - REVEGETATION
ST - SEDIMENT TRAP



APPROXIMATE ACREAGES

TOTAL RECLAIMED AREA = ± 5.528 ACRES
UN-RECLAIMED AREA = ± 2.197 ACRES

UINTAH ENGINEERING & LAND SURVEYING
85 So. 200 East • Vernal, Utah 84078 • (435) 789-1017

Encana OIL & GAS (USA) INC.

SURFACE DISTURBANCE AREA FOR

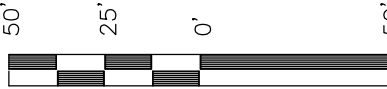
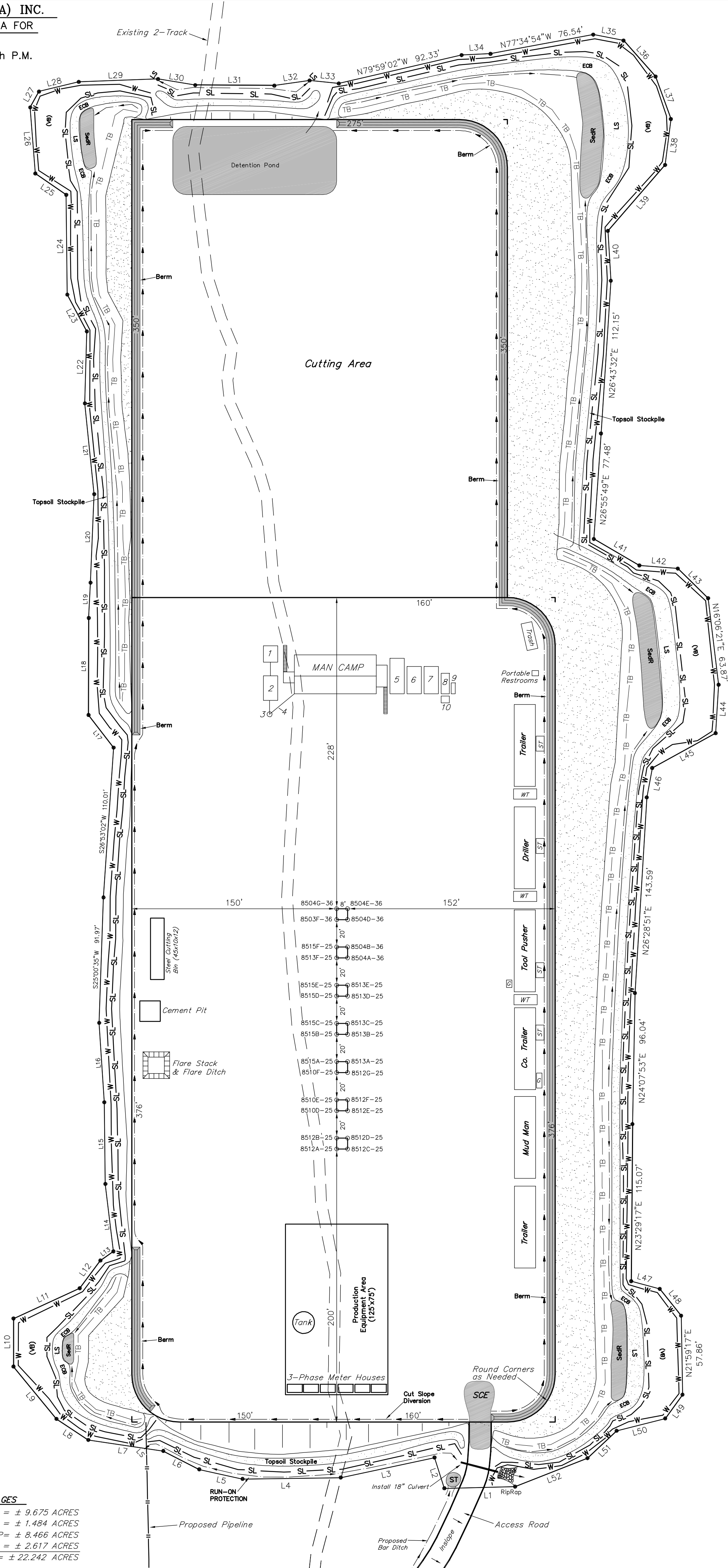
WELL PAD D36 496
SECTION 36, T4S, R96W, 6th P.M.
Lot 4

SCALE: 1" = 50'
DATE: 08-03-09
DRAWN BY: D.R.B.
Revised: 08-17-09 D.R.B.
Revised: 10-28-09 D.R.B.
Revised: 07-28-10 D.R.B.
Revised: 05-18-11 D.R.B.
Revised: 06-24-11 D.R.B.
Revised: 06-27-11 D.R.B.

LINE TABLE		
LINE	BEARING	LENGTH
L1	S68°20'14"E	51.81'
L2	S05°13'19"W	23.70'
L3	S79°02'43"E	70.21'
L4	S67°47'18"E	71.90'
L5	S54°26'40"E	32.51'
L6	S39°52'38"E	29.55'
L7	S58°35'51"E	55.50'
L8	S33°30'34"E	27.93'
L9	S16°20'19"E	49.64'
L10	S23°02'12"W	35.20'
L11	S88°27'00"W	53.33'
L12	S59°44'24"W	25.31'
L13	S77°53'24"W	11.66'
L14	S16°14'35"W	49.75'
L15	S22°17'38"W	59.83'
L16	S19°21'43"W	58.30'
L17	S14°30'13"E	30.14'
L18	S23°11'05"W	71.05'
L19	S25°52'33"W	25.93'
L20	S25°25'44"W	64.88'
L21	S17°10'03"W	66.90'
L22	S24°36'50"W	52.70'
L23	S04°51'11"E	30.57'
L24	S22°23'13"W	73.09'
L25	S32°21'47"E	27.47'
L26	S18°38'05"W	48.59'
L27	S52°01'17"W	13.23'
L28	N80°43'10"W	29.96'
L29	N68°58'14"W	58.14'
L30	N57°50'22"W	27.59'
L31	N66°31'54"W	57.92'
L32	N75°18'50"W	26.07'
L33	N61°08'29"W	21.50'
L34	N69°24'02"W	21.19'
L35	N55°50'22"W	22.61'
L36	N18°38'18"W	35.23'
L37	N03°14'47"E	33.12'
L38	N30°11'17"E	33.91'
L39	N63°58'52"E	63.97'
L40	N19°35'03"E	36.55'
L41	N36°50'10"W	38.61'
L42	N62°18'00"W	28.21'
L43	N22°33'58"W	31.04'
L44	N26°35'40"E	35.58'
L45	N84°15'42"E	52.95'
L46	N33°36'21"E	21.92'
L47	N51°45'43"W	21.68'
L48	N15°26'53"W	25.07'
L49	N59°02'26"E	21.53'
L50	S81°12'35"E	36.74'
L51	N69°48'43"E	29.25'
L52	S88°26'28"E	56.97'

NOTE:
Flare Pit is to
be located a min.
of 100' from the
Well Head.

APPROXIMATE ACREAGES
APPROX. WELL DISTURBANCE = ± 9.675 ACRES
ACCESS ROAD DISTURBANCE = ± 1.484 ACRES
PIPELINE DISTURBANCE FROM PAD TO CDP = ± 8.466 ACRES
PIPELINE DISTURBANCE FROM FRAC TO CDP = ± 2.617 ACRES
TOTAL = ± 22.242 ACRES



SCALE

Sheet 7 of 11



SMMP LEGEND:
ECB - EROSION CONTROL
BLANKET
LS - LEVEL SPREADER
SCE - STABILIZED
CONSTRUCTION
ENTRANCE
SedR - SEDIMENT
RESERVOIR
SL - SLASH
ST - SEDIMENT TRAP
TB - TOE BERM
VB - VEGETATED BUFFER
W - WATTLE

LEGEND:
1 - OVERFLOW
2 - SEWER TANK
3 - LIFT STATION
4 - SEWER LINE
5 - WATER TANK
6 - FREEZER
7 - STORAGE
8 - GENERATOR
9 - FUEL
10 - TRANSFORMER

LEGEND:
ST - Septic Tank
G - Generator
WT - Water Tank