
NOBLE ENERGY INC E-BUSINESS

**Double B Ranch 18-44B
RULISON
Garfield County , Colorado**

Cement Surface Casing
09-Mar-2011

Post Job Summary

The Road to Excellence Starts with Safety

Sold To #: 345242	Ship To #: 2817187	Quote #:	Sales Order #: 8017598
Customer: NOBLE ENERGY INC E-BUSINESS		Customer Rep: Collver, Charles	
Well Name: Double B Ranch	Well #: 18-44B	API/UWI #:	
Field: RULISON	City (SAP): RIFLE	County/Parish: Garfield	State: Colorado
Lat: N 39.433 deg. OR N 39 deg. 26 min. 0.236 secs.		Long: W 107 deg. OR W -107 deg. 0 min. 0 secs.	
Contractor: H&P Drilling		Rig/Platform Name/Num: H&P 322	
Job Purpose: Cement Surface Casing			
Well Type: Development Well		Job Type: Cement Surface Casing	
Sales Person: METLI, MARSHALL	Srvc Supervisor: MAGERS, MICHAEL	MBU ID Emp #: 339439	

Job Personnel

HES Emp Name	Exp Hrs	Emp #	HES Emp Name	Exp Hrs	Emp #	HES Emp Name	Exp Hrs	Emp #
BORSZICH, STEPHEN A	3.5	412388	KEANE, JOHN Donovan	3.5	486519	MAGERS, MICHAEL Gerard	3.5	339439
YUTZY, BRIAN Matthew	3.5	478510						

Equipment

HES Unit #	Distance-1 way	HES Unit #	Distance-1 way	HES Unit #	Distance-1 way	HES Unit #	Distance-1 way
10296152C	60 mile	10867423	60 mile	10897797	60 mile	10897887	60 mile
11259886	60 mile						

Job Hours

Date	On Location Hours	Operating Hours	Date	On Location Hours	Operating Hours	Date	On Location Hours	Operating Hours
03/09/2011	3	1						

TOTAL	Total is the sum of each column separately							
-------	--	--	--	--	--	--	--	--

Job

Formation Name							Date	Time	Time Zone
Formation Depth (MD)	Top			Bottom		Called Out	09 - Mar - 2011	04:00	MST
Form Type				BHST		On Location	09 - Mar - 2011	07:45	MST
Job depth MD	1551. ft		Job Depth TVD		1551. ft	Job Started	09 - Mar - 2011	09:17	MST
Water Depth				Wk Ht Above Floor	2. ft	Job Completed	09 - Mar - 2011	10:15	MST
Perforation Depth (MD)	From			To		Departed Loc	09 - Mar - 2011	11:15	MST

Well Data

Description	New / Used	Max pressure psig	Size in	ID in	Weight lbm/ft	Thread	Grade	Top MD ft	Bottom MD ft	Top TVD ft	Bottom TVD ft
-------------	------------	-------------------	---------	-------	---------------	--------	-------	-----------	--------------	------------	---------------

Sales/Rental/3rd Party (HES)

Description	Qty	Qty uom	Depth	Supplier
PLUG,CMTG,TOP,8 5/8,HWE,7.20 MIN/8.09 MA	1	EA		

Tools and Accessories

Type	Size	Qty	Make	Depth	Type	Size	Qty	Make	Depth	Type	Size	Qty	Make
Guide Shoe					Packer					Top Plug	8.625	1	HES
Float Shoe					Bridge Plug					Bottom Plug			
Float Collar					Retainer					SSR plug set			
Insert Float										Plug Container	NOT	USED	
Stage Tool										Centralizers			

Miscellaneous Materials

Gelling Agt	Conc	Surfactant	Conc	Acid Type	Qty	Conc	%
Treatment Fld	Conc	Inhibitor	Conc	Sand Type	Size		Qty

Fluid Data										
Stage/Plug #: 1										
Fluid #	Stage Type	Fluid Name	Qty	Qty uom	Mixing Density lbm/gal	Yield ft ³ /sk	Mix Fluid Gal/sk	Rate bbl/min	Total Mix Fluid Gal/sk	
1	Fresh Water Spacer		20.00	bbl	.	.0	.0	.0		
2	VersaCem Lead Cement	VERSACEM (TM) SYSTEM (452010)	212.0	sacks	12.3	2.38	13.75		13.75	
3	VersaCem Tail Cement	VERSACEM (TM) SYSTEM (452010)	118.0	sacks	12.8	2.11	11.76		11.76	
11.76 Gal		FRESH WATER								
4	Displacement		74.00	bbl	.	.0	.0	.0		
Calculated Values		Pressures		Volumes						
Displacement	91.2	Shut In: Instant		Lost Returns	0	Cement Slurry	134.2	Pad		
Top Of Cement	SURFACE	5 Min		Cement Returns	10	Actual Displacement	74	Treatment		
Frac Gradient		15 Min		Spacers	20	Load and Breakdown		Total Job	228.2	
Rates										
Circulating	RIG	Mixing	6	Displacement	7.5/3	Avg. Job	6			
Cement Left In Pipe	Amount	42.8 ft	Reason	Shoe Joint						
Frac Ring # 1 @	ID	Frac ring # 2 @	ID	Frac Ring # 3 @	ID	Frac Ring # 4 @	ID			
The Information Stated Herein Is Correct				Customer Representative Signature						

The Road to Excellence Starts with Safety

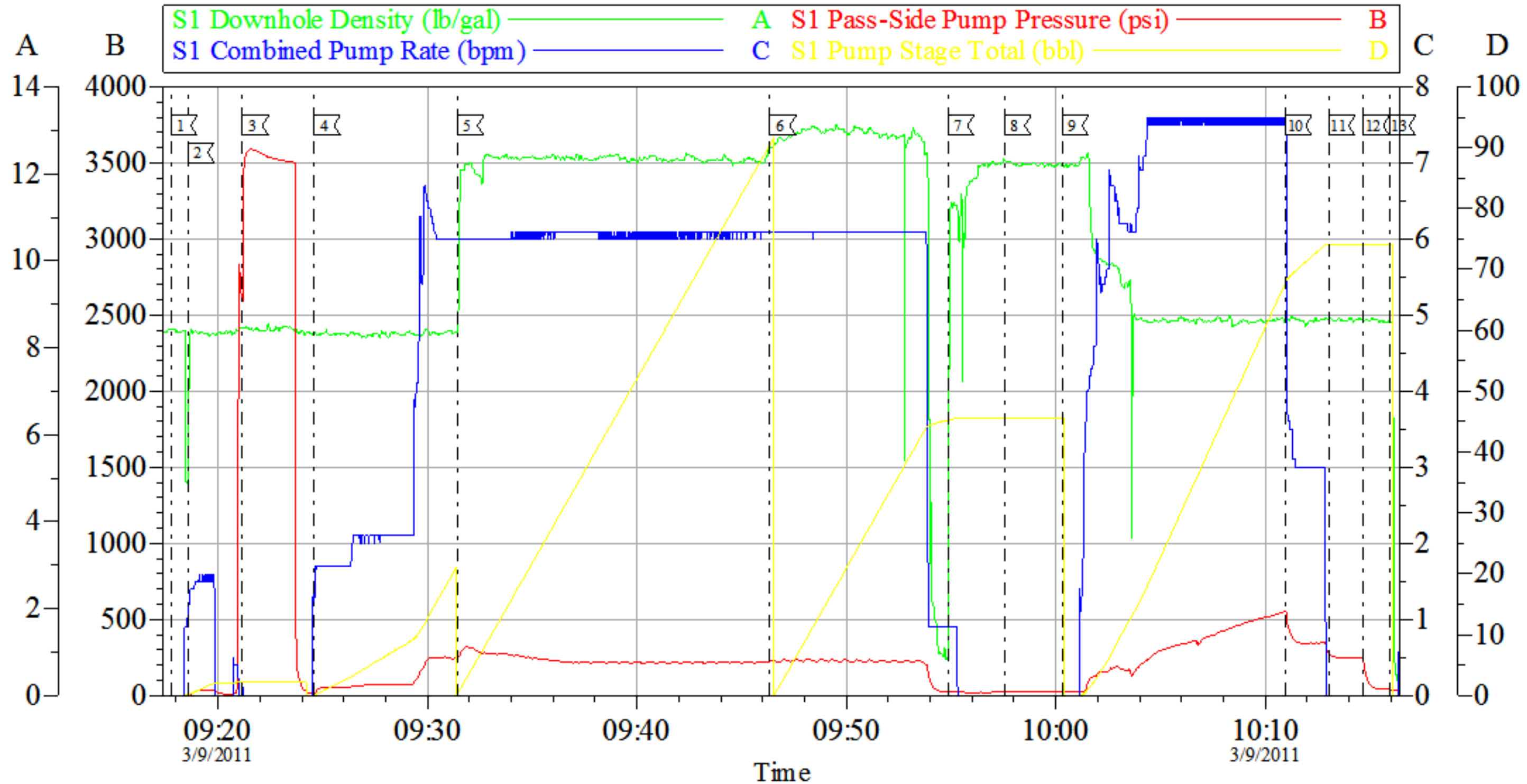
Sold To #: 345242		Ship To #: 2817187		Quote #:		Sales Order #: 8017598	
Customer: NOBLE ENERGY INC E-BUSINESS				Customer Rep: Collver, Charles			
Well Name: Double B Ranch			Well #: 18-44B		API/UWI #:		
Field: RULISON		City (SAP): RIFLE		County/Parish: Garfield		State: Colorado	
Legal Description:							
Lat: N 39.433 deg. OR N 39 deg. 26 min. 0.236 secs.				Long: W 107 deg. OR W -107 deg. 0 min. 0 secs.			
Contractor: H&P Drilling			Rig/Platform Name/Num: H&P 322				
Job Purpose: Cement Surface Casing						Ticket Amount:	
Well Type: Development Well			Job Type: Cement Surface Casing				
Sales Person: METLI, MARSHALL			Srv Supervisor: MAGERS, MICHAEL			MBU ID Emp #: 339439	

Activity Description	Date/Time	Cht #	Rate bbl/min	Volume bbl		Pressure psig		Comments
				Stage	Total	Tubing	Casing	
Crew Leave Yard	03/09/2011 06:00							HES ALL PRESENT
Arrive At Loc	03/09/2011 07:45							RIG WAS JUST STARTING TO CIRCULATE WHEN HES ARRIVED/RIG CIRCULATED FOR 1 HR WHILE HES RIGGED UP
Assessment Of Location Safety Meeting	03/09/2011 07:50							MUDDY AND ICY IN SPOTS
Pre-Rig Up Safety Meeting	03/09/2011 07:55							JSA ON RIGGING UP
Rig-Up Equipment	03/09/2011 08:00							TD- 1551 TP-1541 SJ- 42.8 MW-9.0 CSG-8 5/8 32.3 # J-55 OH- 12.25
Safety Huddle	03/09/2011 09:00							RIG CREW AND HES ALL PRESENT
Start Job	03/09/2011 09:17							JOB WAS RUN OFF-LINE/DID NOT USE PLUG CONTAINER/USED 8 5/8" SWAGE TO PUMP JOB UNDERNEATH RIG FLOOR
Other	03/09/2011 09:18		2	2			35.0	FILL LINES
Pressure Test	03/09/2011 09:21		0.5	0.5			3581.0	PSI TEST OK
Pump Spacer 1	03/09/2011 09:24		4	20			89.0	FRESH WATER
Pump Lead Cement	03/09/2011 09:31		6	89.9			273.0	VERSACEM 212 SKS 12.3 PPG 2.38 FT3/SK 13.75 GAL/SK

Activity Description	Date/Time	Cht #	Rate bbl/min	Volume bbl		Pressure psig		Comments
				Stage	Total	Tubing	Casing	
Pump Tail Cement	03/09/2011 09:46		6	44.3			238.0	VERSACEM 118 SKS 12.8 PPG 2.11 FT3/SK 11.76 GAL/SK
Shutdown	03/09/2011 09:54							CLEAN UP TUB AND CEMENT HEAD/TAKE OFF 8 5/8" SWAGE PUT PLUG IN BY HAND
Drop Plug	03/09/2011 09:57							PLUG AWAY
Pump Displacement	03/09/2011 10:00		7.5	74			457.0	FRESH WATER
Slow Rate	03/09/2011 10:10		3	64			295.0	GOT 10 BBLS OF CEMENT TO SURFACE
Shutdown	03/09/2011 10:13			74			295.0	PER COMPANY REP SHUT DOWN 17 BBLS SHORT OF TOTAL DISPLACEMENT/PLUG DID NOT LAND
Check Floats	03/09/2011 10:14			74			295.0	FLOATS HELD/GOT 1/4 BBL BACK INTO DISPLACEMENT TANK
End Job	03/09/2011 10:15							HAD GOOD CIRCULATION THROUGHOUT JOB/THANKS FOR USING HES AND THE CREW OF MIKE MAGERS

NOBLE H&P 322

SURFACE 8 5/8



Local Event Log			
1 START JOB	09:17:44	2 FILL LINES	09:18:33
3 PRESSURE TEST	09:21:10	4 PUMP FRSH WTR SPACER	09:24:35
5 PUMP LEAD CEMENT	09:31:26	6 PUMP TAIL CEMENT	09:46:21
7 SHUT DOWN	09:54:50	8 DROP PLUG	09:57:34
9 PUMP FRSH WTR DISPLACEMENT	10:00:19	10 SLOW RATE	10:10:59
11 SHUT DOWN	10:13:03	12 CHECK FLOATS	10:14:41
13 END JOB	10:15:56		

Customer: NOBLE H&P 322
 Well Description: DOUBLE B RANCH 18-44B
 Company Rep: KENNY WILKERSON

Job Date: 09-Mar-2011
 Job Type: SURFACE
 Cement Supervisor: MIKE MAGERS

Sales Order #: 8017598
 ADC Used: YES
 Elite #: 9 STEVE BORSZICH

OptiCem v6.3.4
 09-Mar-11 10:40