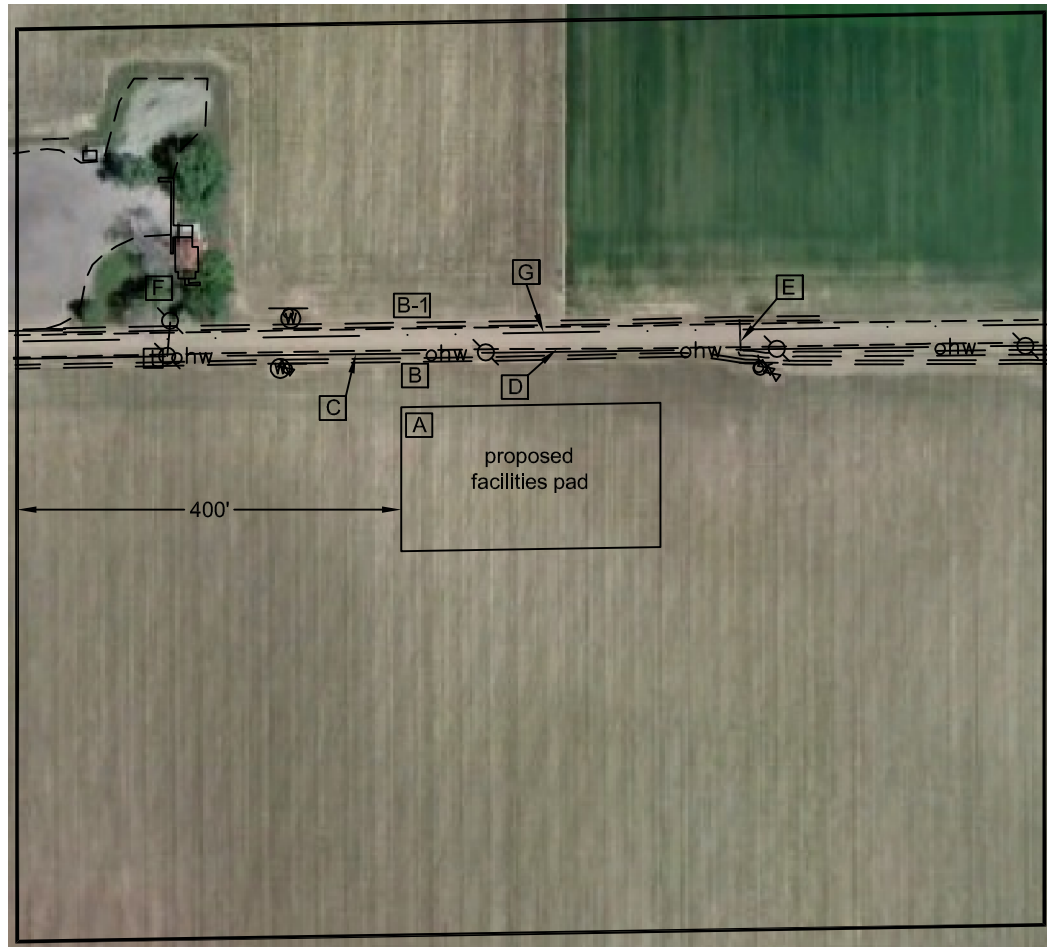


Nearest:  
 Building: 253' northwest  
 Above Ground Utility: 56' north  
 Public Road: 59' north  
 Property Line: 79' north  
 Railroad: 884' southeast

# Location Drawing

Proposed Pad Data:  
 Northwest corner of  
 proposed facilities pad  
 Latitude: N 40.21837°  
 Longitude: W 105.01046°  
 FNL: 75'  
 FWL: 1912'  
 ELEV: 5036'  
 PDOP: 1.6

Field observations taken  
 on 5/23/11 by operator  
 Craig Burke.



## Legend:

- misc. utility sign
- power pole
- telephone riser
- water manhole
- fire hydrant
- water valve
- overhead wire

**Distances listed below are  
 measured from the Northwest  
 corner proposed Facilities Pad**

- [A] northwest corner of the proposed facilities pad
- [B] ditch 47' north
- [B-1] ditch 83' north
- [C] overhead power line 56' north
- [D] south edge County Road 32 59' north
- [E] cmp 359' northeast
- [F] building 253' northwest
- [G] property line 79' north



Scale: 1"=200'

## Liberty NENW Facilities Pad Drawing

Improvements extending  
 400' from facilities pad

Township 3 North, Range 68 West,  
 Section 21: NE $\frac{1}{4}$  NW $\frac{1}{4}$   
 Weld County, Colorado

June 6, 2011

## PLS Group, LLC

109 Coronado Ct. - Building No. 7  
 Fort Collins, Colorado 80525  
 P. 970-282-3446 Fx. 970-377-6767