

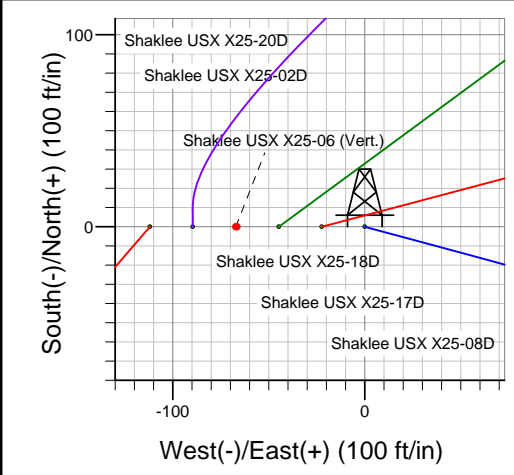
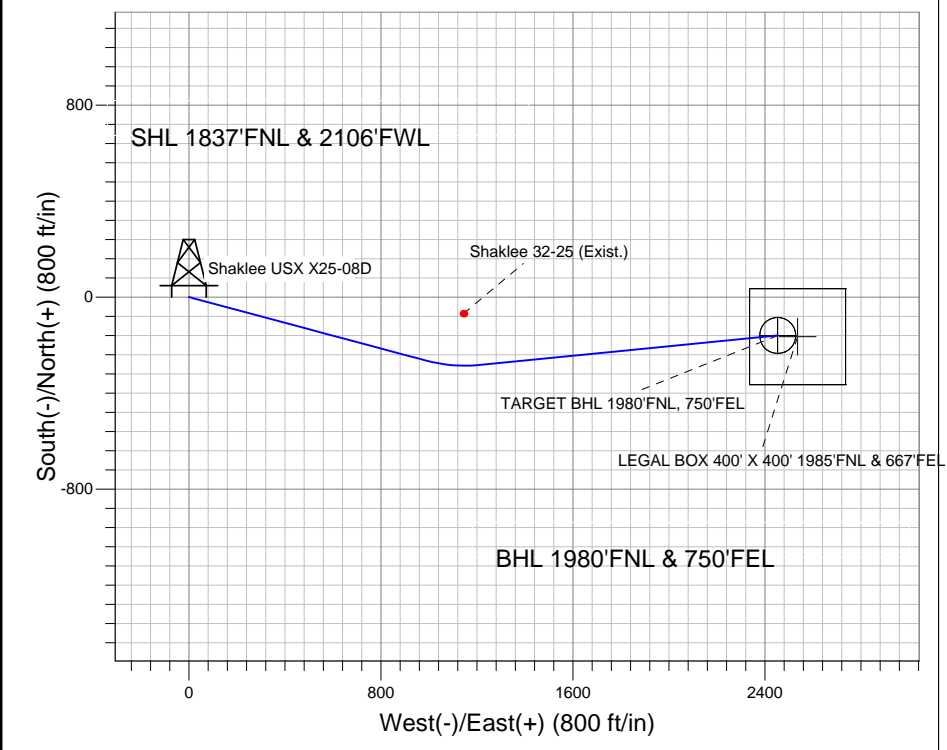
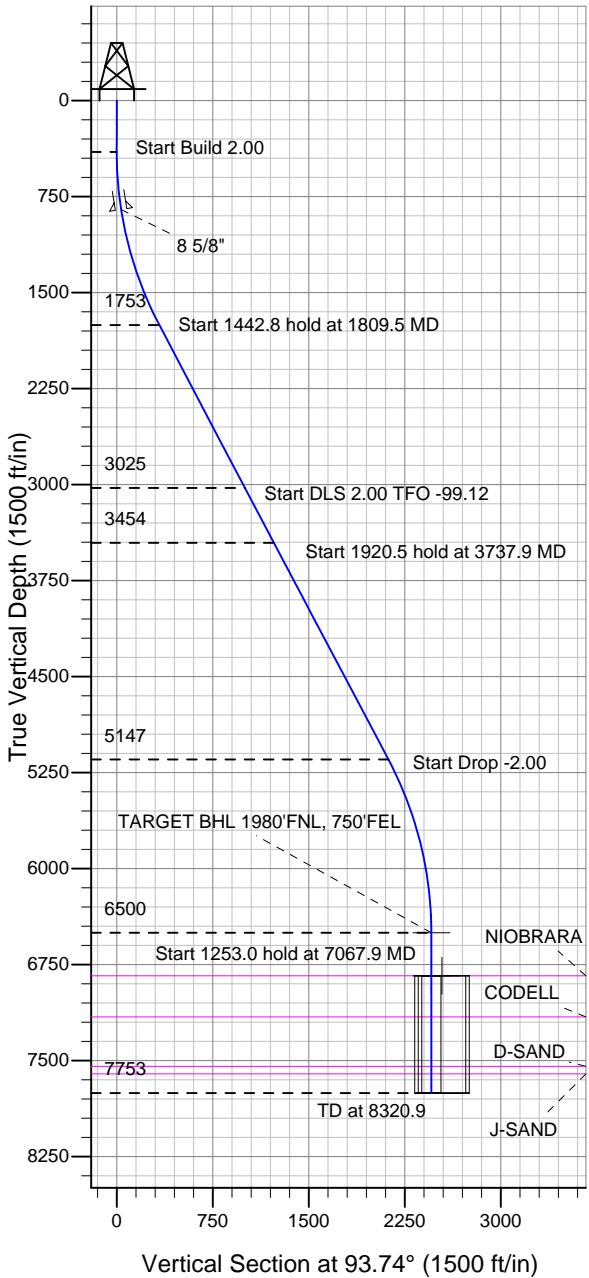
### Well Name: Shaklee USX X25-08D

Surface Location: Shaklee USX X25-02D Pad Sec.25-T2N-R65W  
 North American Datum 1983 US State Plane 1983 Colorado Northern Zone

Ground Elevation: 4903.0

+N/-S +E/-W Northing Easting Latitude Longitude Slot  
 0.0 0.0 1284773.93 3247755.06 40.111700 -104.614180  
 Original Well Elev WELL @ 4916.0ft (Original Well Elev)

## NOBLE ENERGY INC WELD COUNTY CO



Shaklee USX X25-02D Pad Sec.25-T2N-R65W  
 Shaklee USX X25-08D  
 Noble Shaklee USX X25-08D Plan #1 (4-19-11)  
 11:23, April 26 2011

Azimuths to True North  
 Magnetic North: 8.78°

Magnetic Field  
 Strength: 53011.9snT  
 Dip Angle: 66.85°  
 Date: 4/19/2011  
 Model: IGRF2010

### WELLBORE TARGET DETAILS (LAT/LONG)

Name	TVD	+N/-S	+E/-W	Latitude	Longitude	Shape
TARGET BHL 1980'FNL, 750'FEL	6500.0	-160.1	2453.0	40.111260	-104.605410	Point
LEGAL BOX 400' X 400' 1985'FNL & 667'FEL	6836.0	-165.1	2536.0	40.111246	-104.605113	Rectangle (Sides: L400.0 W400.0)
TARGET CIRCLE 1980'FNL & 750'FEL	6836.0	-160.1	2453.0	40.111260	-104.605410	Circle (Radius: 75.0)

### SECTION DETAILS

Sec	MD	Inc	Azi	TVD	+N/-S	+E/-W	DLeg	TFace	VSec	Target
1	0.0	0.00	0.00	0.0	0.0	0.0	0.00	0.00	0.0	
2	400.0	0.00	0.00	400.0	0.0	0.0	0.00	0.00	0.0	
3	1809.5	28.19	105.00	1753.3	-87.9	328.2	2.00	105.00	333.3	
4	3252.3	28.19	105.00	3025.0	-264.4	986.6	0.00	0.00	1001.7	
5	3737.9	28.19	84.36	3454.0	-282.8	1212.0	2.00	-99.12	1227.9	
6	5658.4	28.19	84.36	5146.7	-193.6	2114.9	0.00	0.00	2123.0	
7	7067.9	0.00	0.00	6500.0	-160.1	2453.0	2.00	180.00	2458.3	TARGET BHL 1980'FNL, 750'FEL
8	8320.9	0.00	0.00	7753.0	-160.1	2453.0	0.00	0.00	2458.3	



## Directional

# NOBLE ENERGY INC WELD COUNTY CO

SEC.25-T2N-R65W

Shaklee USX X25-02D Pad Sec.25-T2N-R65W

Shaklee USX X25-08D

Wellbore #1

Plan: Noble Shaklee USX X25-08D Plan #1 (4-19-11)

## Standard Planning Report

26 April, 2011



<b>Database:</b>	Landmark	<b>Local Co-ordinate Reference:</b>	Well Shaklee USX X25-08D
<b>Company:</b>	NOBLE ENERGY INC WELD COUNTY CO	<b>TVD Reference:</b>	WELL @ 4916.0ft (Original Well Elev)
<b>Project:</b>	SEC.25-T2N-R65W	<b>MD Reference:</b>	WELL @ 4916.0ft (Original Well Elev)
<b>Site:</b>	Shaklee USX X25-02D Pad Sec.25-T2N-R65W	<b>North Reference:</b>	True
<b>Well:</b>	Shaklee USX X25-08D	<b>Survey Calculation Method:</b>	Minimum Curvature
<b>Wellbore:</b>	Wellbore #1		
<b>Design:</b>	Noble Shaklee USX X25-08D Plan #1 (4-19-11)		

<b>Project</b>	SEC.25-T2N-R65W, Weld County, Colorado,		
<b>Map System:</b>	US State Plane 1983	<b>System Datum:</b>	Mean Sea Level
<b>Geo Datum:</b>	North American Datum 1983		Using Well Reference Point
<b>Map Zone:</b>	Colorado Northern Zone		Using geodetic scale factor

<b>Site</b>	Shaklee USX X25-02D Pad Sec.25-T2N-R65W				
<b>Site Position:</b>		<b>Northing:</b>	1,284,773.06 ft	<b>Latitude:</b>	40.111700
<b>From:</b>	Lat/Long	<b>Easting:</b>	3,247,665.57 ft	<b>Longitude:</b>	-104.614500
<b>Position Uncertainty:</b>	0.0 ft	<b>Slot Radius:</b>	"	<b>Grid Convergence:</b>	0.57 °

<b>Well</b>	Shaklee USX X25-08D					
<b>Well Position</b>	<b>+N/-S</b>	0.0 ft	<b>Northing:</b>	1,284,773.93 ft	<b>Latitude:</b>	40.111700
	<b>+E/-W</b>	89.5 ft	<b>Easting:</b>	3,247,755.06 ft	<b>Longitude:</b>	-104.614180
<b>Position Uncertainty</b>		0.0 ft	<b>Wellhead Elevation:</b>	ft	<b>Ground Level:</b>	4,903.0 ft

<b>Wellbore</b>	Wellbore #1				
<b>Magnetics</b>	<b>Model Name</b>	<b>Sample Date</b>	<b>Declination (°)</b>	<b>Dip Angle (°)</b>	<b>Field Strength (nT)</b>
	IGRF2010	4/19/2011	8.78	66.85	53,012

<b>Design</b>	Noble Shaklee USX X25-08D Plan #1 (4-19-11)			
<b>Audit Notes:</b>				
<b>Version:</b>	<b>Phase:</b>	PROTOTYPE	<b>Tie On Depth:</b>	0.0
<b>Vertical Section:</b>	<b>Depth From (TVD) (ft)</b>	<b>+N/-S (ft)</b>	<b>+E/-W (ft)</b>	<b>Direction (°)</b>
	0.0	0.0	0.0	93.74

<b>Plan Sections</b>										
Measured Depth (ft)	Inclination (°)	Azimuth (°)	Vertical Depth (ft)	+N/-S (ft)	+E/-W (ft)	Dogleg Rate (°/100ft)	Build Rate (°/100ft)	Turn Rate (°/100ft)	TFO (°)	Target
0.0	0.00	0.00	0.0	0.0	0.0	0.00	0.00	0.00	0.00	
400.0	0.00	0.00	400.0	0.0	0.0	0.00	0.00	0.00	0.00	
1,809.5	28.19	105.00	1,753.3	-87.9	328.2	2.00	2.00	0.00	105.00	
3,252.3	28.19	105.00	3,025.0	-264.4	986.6	0.00	0.00	0.00	0.00	
3,737.9	28.19	84.36	3,454.0	-282.8	1,212.0	2.00	0.00	-4.25	-99.12	
5,658.4	28.19	84.36	5,146.7	-193.6	2,114.9	0.00	0.00	0.00	0.00	
7,067.9	0.00	0.00	6,500.0	-160.1	2,453.0	2.00	-2.00	0.00	180.00	TARGET BHL 198C
8,320.9	0.00	0.00	7,753.0	-160.1	2,453.0	0.00	0.00	0.00	0.00	

<b>Database:</b>	Landmark	<b>Local Co-ordinate Reference:</b>	Well Shaklee USX X25-08D
<b>Company:</b>	NOBLE ENERGY INC WELD COUNTY CO	<b>TVD Reference:</b>	WELL @ 4916.0ft (Original Well Elev)
<b>Project:</b>	SEC.25-T2N-R65W	<b>MD Reference:</b>	WELL @ 4916.0ft (Original Well Elev)
<b>Site:</b>	Shaklee USX X25-02D Pad Sec.25-T2N-R65W	<b>North Reference:</b>	True
<b>Well:</b>	Shaklee USX X25-08D	<b>Survey Calculation Method:</b>	Minimum Curvature
<b>Wellbore:</b>	Wellbore #1		
<b>Design:</b>	Noble Shaklee USX X25-08D Plan #1 (4-19-11)		

**Planned Survey**

Measured Depth (ft)	Inclination (°)	Azimuth (°)	Vertical Depth (ft)	+N/-S (ft)	+E/-W (ft)	Vertical Section (ft)	Dogleg Rate (°/100ft)	Build Rate (°/100ft)	Turn Rate (°/100ft)
0.0	0.00	0.00	0.0	0.0	0.0	0.0	0.00	0.00	0.00
40.0	0.00	0.00	40.0	0.0	0.0	0.0	0.00	0.00	0.00
80.0	0.00	0.00	80.0	0.0	0.0	0.0	0.00	0.00	0.00
120.0	0.00	0.00	120.0	0.0	0.0	0.0	0.00	0.00	0.00
160.0	0.00	0.00	160.0	0.0	0.0	0.0	0.00	0.00	0.00
200.0	0.00	0.00	200.0	0.0	0.0	0.0	0.00	0.00	0.00
240.0	0.00	0.00	240.0	0.0	0.0	0.0	0.00	0.00	0.00
280.0	0.00	0.00	280.0	0.0	0.0	0.0	0.00	0.00	0.00
320.0	0.00	0.00	320.0	0.0	0.0	0.0	0.00	0.00	0.00
360.0	0.00	0.00	360.0	0.0	0.0	0.0	0.00	0.00	0.00
400.0	0.00	0.00	400.0	0.0	0.0	0.0	0.00	0.00	0.00
440.0	0.80	105.00	440.0	-0.1	0.3	0.3	2.00	2.00	0.00
480.0	1.60	105.00	480.0	-0.3	1.1	1.1	2.00	2.00	0.00
520.0	2.40	105.00	520.0	-0.7	2.4	2.5	2.00	2.00	0.00
560.0	3.20	105.00	559.9	-1.2	4.3	4.4	2.00	2.00	0.00
600.0	4.00	105.00	599.8	-1.8	6.7	6.8	2.00	2.00	0.00
640.0	4.80	105.00	639.7	-2.6	9.7	9.9	2.00	2.00	0.00
680.0	5.60	105.00	679.6	-3.5	13.2	13.4	2.00	2.00	0.00
720.0	6.40	105.00	719.3	-4.6	17.2	17.5	2.00	2.00	0.00
760.0	7.20	105.00	759.1	-5.8	21.8	22.2	2.00	2.00	0.00
800.0	8.00	105.00	798.7	-7.2	26.9	27.3	2.00	2.00	0.00
840.0	8.80	105.00	838.3	-8.7	32.6	33.1	2.00	2.00	0.00
851.9	9.04	105.00	850.0	-9.2	34.4	34.9	2.00	2.00	0.00
<b>8 5/8"</b>									
880.0	9.60	105.00	877.8	-10.4	38.8	39.3	2.00	2.00	0.00
920.0	10.40	105.00	917.1	-12.2	45.5	46.2	2.00	2.00	0.00
960.0	11.20	105.00	956.4	-14.1	52.7	53.5	2.00	2.00	0.00
1,000.0	12.00	105.00	995.6	-16.2	60.5	61.4	2.00	2.00	0.00
1,040.0	12.80	105.00	1,034.7	-18.4	68.8	69.8	2.00	2.00	0.00
1,080.0	13.60	105.00	1,073.6	-20.8	77.6	78.8	2.00	2.00	0.00
1,120.0	14.40	105.00	1,112.4	-23.3	86.9	88.3	2.00	2.00	0.00
1,160.0	15.20	105.00	1,151.1	-25.9	96.8	98.3	2.00	2.00	0.00
1,200.0	16.00	105.00	1,189.6	-28.7	107.2	108.8	2.00	2.00	0.00
1,240.0	16.80	105.00	1,228.0	-31.6	118.1	119.9	2.00	2.00	0.00
1,280.0	17.60	105.00	1,266.2	-34.7	129.5	131.5	2.00	2.00	0.00
1,320.0	18.40	105.00	1,304.3	-37.9	141.5	143.6	2.00	2.00	0.00
1,360.0	19.20	105.00	1,342.1	-41.2	153.9	156.3	2.00	2.00	0.00
1,400.0	20.00	105.00	1,379.8	-44.7	166.9	169.4	2.00	2.00	0.00
1,440.0	20.80	105.00	1,417.3	-48.3	180.3	183.1	2.00	2.00	0.00
1,480.0	21.60	105.00	1,454.6	-52.1	194.3	197.3	2.00	2.00	0.00
1,520.0	22.40	105.00	1,491.7	-55.9	208.8	212.0	2.00	2.00	0.00
1,560.0	23.20	105.00	1,528.6	-60.0	223.8	227.2	2.00	2.00	0.00
1,600.0	24.00	105.00	1,565.2	-64.1	239.2	242.9	2.00	2.00	0.00
1,640.0	24.80	105.00	1,601.6	-68.4	255.2	259.1	2.00	2.00	0.00
1,680.0	25.60	105.00	1,637.8	-72.8	271.6	275.8	2.00	2.00	0.00
1,720.0	26.40	105.00	1,673.8	-77.3	288.6	293.0	2.00	2.00	0.00
1,760.0	27.20	105.00	1,709.5	-82.0	306.0	310.7	2.00	2.00	0.00
1,800.0	28.00	105.00	1,744.9	-86.8	323.9	328.9	2.00	2.00	0.00
1,809.5	28.19	105.00	1,753.3	-87.9	328.2	333.3	2.00	2.00	0.00
1,840.0	28.19	105.00	1,780.2	-91.7	342.1	347.4	0.00	0.00	0.00
1,880.0	28.19	105.00	1,815.5	-96.6	360.4	365.9	0.00	0.00	0.00
1,920.0	28.19	105.00	1,850.7	-101.5	378.6	384.5	0.00	0.00	0.00
1,960.0	28.19	105.00	1,886.0	-106.3	396.9	403.0	0.00	0.00	0.00

<b>Database:</b>	Landmark	<b>Local Co-ordinate Reference:</b>	Well Shaklee USX X25-08D
<b>Company:</b>	NOBLE ENERGY INC WELD COUNTY CO	<b>TVD Reference:</b>	WELL @ 4916.0ft (Original Well Elev)
<b>Project:</b>	SEC.25-T2N-R65W	<b>MD Reference:</b>	WELL @ 4916.0ft (Original Well Elev)
<b>Site:</b>	Shaklee USX X25-02D Pad Sec.25-T2N-R65W	<b>North Reference:</b>	True
<b>Well:</b>	Shaklee USX X25-08D	<b>Survey Calculation Method:</b>	Minimum Curvature
<b>Wellbore:</b>	Wellbore #1		
<b>Design:</b>	Noble Shaklee USX X25-08D Plan #1 (4-19-11)		

**Planned Survey**

Measured Depth (ft)	Inclination (°)	Azimuth (°)	Vertical Depth (ft)	+N/-S (ft)	+E/-W (ft)	Vertical Section (ft)	Dogleg Rate (°/100ft)	Build Rate (°/100ft)	Turn Rate (°/100ft)
2,000.0	28.19	105.00	1,921.2	-111.2	415.2	421.5	0.00	0.00	0.00
2,040.0	28.19	105.00	1,956.5	-116.1	433.4	440.0	0.00	0.00	0.00
2,080.0	28.19	105.00	1,991.7	-121.0	451.7	458.6	0.00	0.00	0.00
2,120.0	28.19	105.00	2,027.0	-125.9	469.9	477.1	0.00	0.00	0.00
2,160.0	28.19	105.00	2,062.2	-130.8	488.2	495.6	0.00	0.00	0.00
2,200.0	28.19	105.00	2,097.5	-135.7	506.4	514.2	0.00	0.00	0.00
2,240.0	28.19	105.00	2,132.8	-140.6	524.7	532.7	0.00	0.00	0.00
2,280.0	28.19	105.00	2,168.0	-145.5	542.9	551.2	0.00	0.00	0.00
2,320.0	28.19	105.00	2,203.3	-150.4	561.2	569.8	0.00	0.00	0.00
2,360.0	28.19	105.00	2,238.5	-155.3	579.4	588.3	0.00	0.00	0.00
2,400.0	28.19	105.00	2,273.8	-160.1	597.7	606.8	0.00	0.00	0.00
2,440.0	28.19	105.00	2,309.0	-165.0	615.9	625.4	0.00	0.00	0.00
2,480.0	28.19	105.00	2,344.3	-169.9	634.2	643.9	0.00	0.00	0.00
2,520.0	28.19	105.00	2,379.5	-174.8	652.4	662.4	0.00	0.00	0.00
2,560.0	28.19	105.00	2,414.8	-179.7	670.7	681.0	0.00	0.00	0.00
2,600.0	28.19	105.00	2,450.1	-184.6	688.9	699.5	0.00	0.00	0.00
2,640.0	28.19	105.00	2,485.3	-189.5	707.2	718.0	0.00	0.00	0.00
2,680.0	28.19	105.00	2,520.6	-194.4	725.4	736.6	0.00	0.00	0.00
2,720.0	28.19	105.00	2,555.8	-199.3	743.7	755.1	0.00	0.00	0.00
2,760.0	28.19	105.00	2,591.1	-204.2	761.9	773.6	0.00	0.00	0.00
2,800.0	28.19	105.00	2,626.3	-209.1	780.2	792.2	0.00	0.00	0.00
2,840.0	28.19	105.00	2,661.6	-213.9	798.4	810.7	0.00	0.00	0.00
2,880.0	28.19	105.00	2,696.8	-218.8	816.7	829.2	0.00	0.00	0.00
2,920.0	28.19	105.00	2,732.1	-223.7	834.9	847.7	0.00	0.00	0.00
2,960.0	28.19	105.00	2,767.4	-228.6	853.2	866.3	0.00	0.00	0.00
3,000.0	28.19	105.00	2,802.6	-233.5	871.5	884.8	0.00	0.00	0.00
3,040.0	28.19	105.00	2,837.9	-238.4	889.7	903.3	0.00	0.00	0.00
3,080.0	28.19	105.00	2,873.1	-243.3	908.0	921.9	0.00	0.00	0.00
3,120.0	28.19	105.00	2,908.4	-248.2	926.2	940.4	0.00	0.00	0.00
3,160.0	28.19	105.00	2,943.6	-253.1	944.5	958.9	0.00	0.00	0.00
3,200.0	28.19	105.00	2,978.9	-258.0	962.7	977.5	0.00	0.00	0.00
3,240.0	28.19	105.00	3,014.1	-262.8	981.0	996.0	0.00	0.00	0.00
3,252.3	28.19	105.00	3,025.0	-264.4	986.6	1,001.7	0.00	0.00	0.00
3,280.0	28.11	103.84	3,049.4	-267.6	999.2	1,014.5	2.00	-0.30	-4.19
3,320.0	28.00	102.15	3,084.7	-271.8	1,017.6	1,033.1	2.00	-0.26	-4.22
3,360.0	27.92	100.46	3,120.0	-275.5	1,036.0	1,051.7	2.00	-0.20	-4.24
3,400.0	27.86	98.75	3,155.4	-278.6	1,054.4	1,070.3	2.00	-0.15	-4.26
3,440.0	27.82	97.04	3,190.8	-281.2	1,072.9	1,088.9	2.00	-0.10	-4.28
3,480.0	27.80	95.33	3,226.1	-283.2	1,091.5	1,107.6	2.00	-0.05	-4.29
3,520.0	27.81	93.61	3,261.5	-284.7	1,110.1	1,126.2	2.00	0.01	-4.29
3,560.0	27.83	91.90	3,296.9	-285.6	1,128.7	1,144.9	2.00	0.06	-4.28
3,600.0	27.88	90.19	3,332.3	-285.9	1,147.4	1,163.6	2.00	0.11	-4.27
3,640.0	27.94	88.48	3,367.6	-285.7	1,166.1	1,182.2	2.00	0.16	-4.26
3,680.0	28.03	86.79	3,402.9	-284.9	1,184.9	1,200.9	2.00	0.22	-4.24
3,720.0	28.14	85.10	3,438.2	-283.6	1,203.6	1,219.6	2.00	0.27	-4.21
3,737.9	28.19	84.36	3,454.0	-282.8	1,212.0	1,227.9	2.00	0.31	-4.19
3,760.0	28.19	84.36	3,473.5	-281.8	1,222.4	1,238.2	0.00	0.00	0.00
3,800.0	28.19	84.36	3,508.7	-279.9	1,241.2	1,256.8	0.00	0.00	0.00
3,840.0	28.19	84.36	3,544.0	-278.1	1,260.0	1,275.5	0.00	0.00	0.00
3,880.0	28.19	84.36	3,579.3	-276.2	1,278.9	1,294.1	0.00	0.00	0.00
3,920.0	28.19	84.36	3,614.5	-274.3	1,297.7	1,312.8	0.00	0.00	0.00
3,960.0	28.19	84.36	3,649.8	-272.5	1,316.5	1,331.4	0.00	0.00	0.00
4,000.0	28.19	84.36	3,685.0	-270.6	1,335.3	1,350.1	0.00	0.00	0.00

<b>Database:</b>	Landmark	<b>Local Co-ordinate Reference:</b>	Well Shaklee USX X25-08D
<b>Company:</b>	NOBLE ENERGY INC WELD COUNTY CO	<b>TVD Reference:</b>	WELL @ 4916.0ft (Original Well Elev)
<b>Project:</b>	SEC.25-T2N-R65W	<b>MD Reference:</b>	WELL @ 4916.0ft (Original Well Elev)
<b>Site:</b>	Shaklee USX X25-02D Pad Sec.25-T2N-R65W	<b>North Reference:</b>	True
<b>Well:</b>	Shaklee USX X25-08D	<b>Survey Calculation Method:</b>	Minimum Curvature
<b>Wellbore:</b>	Wellbore #1		
<b>Design:</b>	Noble Shaklee USX X25-08D Plan #1 (4-19-11)		

**Planned Survey**

Measured Depth (ft)	Inclination (°)	Azimuth (°)	Vertical Depth (ft)	+N/-S (ft)	+E/-W (ft)	Vertical Section (ft)	Dogleg Rate (°/100ft)	Build Rate (°/100ft)	Turn Rate (°/100ft)
4,040.0	28.19	84.36	3,720.3	-268.8	1,354.1	1,368.7	0.00	0.00	0.00
4,080.0	28.19	84.36	3,755.5	-266.9	1,372.9	1,387.3	0.00	0.00	0.00
4,120.0	28.19	84.36	3,790.8	-265.0	1,391.7	1,406.0	0.00	0.00	0.00
4,160.0	28.19	84.36	3,826.0	-263.2	1,410.5	1,424.6	0.00	0.00	0.00
4,200.0	28.19	84.36	3,861.3	-261.3	1,429.3	1,443.3	0.00	0.00	0.00
4,240.0	28.19	84.36	3,896.6	-259.5	1,448.1	1,461.9	0.00	0.00	0.00
4,280.0	28.19	84.36	3,931.8	-257.6	1,466.9	1,480.6	0.00	0.00	0.00
4,320.0	28.19	84.36	3,967.1	-255.8	1,485.7	1,499.2	0.00	0.00	0.00
4,360.0	28.19	84.36	4,002.3	-253.9	1,504.5	1,517.8	0.00	0.00	0.00
4,400.0	28.19	84.36	4,037.6	-252.0	1,523.3	1,536.5	0.00	0.00	0.00
4,440.0	28.19	84.36	4,072.8	-250.2	1,542.1	1,555.1	0.00	0.00	0.00
4,480.0	28.19	84.36	4,108.1	-248.3	1,560.9	1,573.8	0.00	0.00	0.00
4,520.0	28.19	84.36	4,143.3	-246.5	1,579.7	1,592.4	0.00	0.00	0.00
4,560.0	28.19	84.36	4,178.6	-244.6	1,598.5	1,611.1	0.00	0.00	0.00
4,600.0	28.19	84.36	4,213.8	-242.7	1,617.3	1,629.7	0.00	0.00	0.00
4,640.0	28.19	84.36	4,249.1	-240.9	1,636.1	1,648.4	0.00	0.00	0.00
4,680.0	28.19	84.36	4,284.4	-239.0	1,654.9	1,667.0	0.00	0.00	0.00
4,720.0	28.19	84.36	4,319.6	-237.2	1,673.7	1,685.6	0.00	0.00	0.00
4,760.0	28.19	84.36	4,354.9	-235.3	1,692.5	1,704.3	0.00	0.00	0.00
4,800.0	28.19	84.36	4,390.1	-233.5	1,711.4	1,722.9	0.00	0.00	0.00
4,840.0	28.19	84.36	4,425.4	-231.6	1,730.2	1,741.6	0.00	0.00	0.00
4,880.0	28.19	84.36	4,460.6	-229.7	1,749.0	1,760.2	0.00	0.00	0.00
4,920.0	28.19	84.36	4,495.9	-227.9	1,767.8	1,778.9	0.00	0.00	0.00
4,960.0	28.19	84.36	4,531.1	-226.0	1,786.6	1,797.5	0.00	0.00	0.00
5,000.0	28.19	84.36	4,566.4	-224.2	1,805.4	1,816.1	0.00	0.00	0.00
5,040.0	28.19	84.36	4,601.7	-222.3	1,824.2	1,834.8	0.00	0.00	0.00
5,080.0	28.19	84.36	4,636.9	-220.4	1,843.0	1,853.4	0.00	0.00	0.00
5,120.0	28.19	84.36	4,672.2	-218.6	1,861.8	1,872.1	0.00	0.00	0.00
5,160.0	28.19	84.36	4,707.4	-216.7	1,880.6	1,890.7	0.00	0.00	0.00
5,200.0	28.19	84.36	4,742.7	-214.9	1,899.4	1,909.4	0.00	0.00	0.00
5,240.0	28.19	84.36	4,777.9	-213.0	1,918.2	1,928.0	0.00	0.00	0.00
5,280.0	28.19	84.36	4,813.2	-211.1	1,937.0	1,946.6	0.00	0.00	0.00
5,320.0	28.19	84.36	4,848.4	-209.3	1,955.8	1,965.3	0.00	0.00	0.00
5,360.0	28.19	84.36	4,883.7	-207.4	1,974.6	1,983.9	0.00	0.00	0.00
5,400.0	28.19	84.36	4,919.0	-205.6	1,993.4	2,002.6	0.00	0.00	0.00
5,440.0	28.19	84.36	4,954.2	-203.7	2,012.2	2,021.2	0.00	0.00	0.00
5,480.0	28.19	84.36	4,989.5	-201.9	2,031.0	2,039.9	0.00	0.00	0.00
5,520.0	28.19	84.36	5,024.7	-200.0	2,049.8	2,058.5	0.00	0.00	0.00
5,560.0	28.19	84.36	5,060.0	-198.1	2,068.6	2,077.2	0.00	0.00	0.00
5,600.0	28.19	84.36	5,095.2	-196.3	2,087.4	2,095.8	0.00	0.00	0.00
5,640.0	28.19	84.36	5,130.5	-194.4	2,106.2	2,114.4	0.00	0.00	0.00
5,658.4	28.19	84.36	5,146.7	-193.6	2,114.9	2,123.0	0.00	0.00	0.00
5,680.0	27.76	84.36	5,165.8	-192.6	2,125.0	2,133.0	2.00	-2.00	0.00
5,720.0	26.96	84.36	5,201.3	-190.8	2,143.3	2,151.1	2.00	-2.00	0.00
5,760.0	26.16	84.36	5,237.1	-189.0	2,161.1	2,168.8	2.00	-2.00	0.00
5,800.0	25.36	84.36	5,273.1	-187.3	2,178.4	2,185.9	2.00	-2.00	0.00
5,840.0	24.56	84.36	5,309.4	-185.6	2,195.2	2,202.6	2.00	-2.00	0.00
5,880.0	23.76	84.36	5,345.9	-184.0	2,211.5	2,218.7	2.00	-2.00	0.00
5,920.0	22.96	84.36	5,382.6	-182.5	2,227.2	2,234.4	2.00	-2.00	0.00
5,960.0	22.16	84.36	5,419.5	-181.0	2,242.5	2,249.5	2.00	-2.00	0.00
6,000.0	21.36	84.36	5,456.7	-179.5	2,257.3	2,264.2	2.00	-2.00	0.00
6,040.0	20.56	84.36	5,494.0	-178.1	2,271.5	2,278.3	2.00	-2.00	0.00
6,080.0	19.76	84.36	5,531.6	-176.7	2,285.2	2,291.9	2.00	-2.00	0.00

<b>Database:</b>	Landmark	<b>Local Co-ordinate Reference:</b>	Well Shaklee USX X25-08D
<b>Company:</b>	NOBLE ENERGY INC WELD COUNTY CO	<b>TVD Reference:</b>	WELL @ 4916.0ft (Original Well Elev)
<b>Project:</b>	SEC.25-T2N-R65W	<b>MD Reference:</b>	WELL @ 4916.0ft (Original Well Elev)
<b>Site:</b>	Shaklee USX X25-02D Pad Sec.25-T2N-R65W	<b>North Reference:</b>	True
<b>Well:</b>	Shaklee USX X25-08D	<b>Survey Calculation Method:</b>	Minimum Curvature
<b>Wellbore:</b>	Wellbore #1		
<b>Design:</b>	Noble Shaklee USX X25-08D Plan #1 (4-19-11)		

**Planned Survey**

Measured Depth (ft)	Inclination (°)	Azimuth (°)	Vertical Depth (ft)	+N/-S (ft)	+E/-W (ft)	Vertical Section (ft)	Dogleg Rate (°/100ft)	Build Rate (°/100ft)	Turn Rate (°/100ft)
6,120.0	18.96	84.36	5,569.3	-175.4	2,298.4	2,305.0	2.00	-2.00	0.00
6,160.0	18.16	84.36	5,607.2	-174.2	2,311.1	2,317.5	2.00	-2.00	0.00
6,200.0	17.36	84.36	5,645.3	-173.0	2,323.2	2,329.6	2.00	-2.00	0.00
6,240.0	16.56	84.36	5,683.6	-171.8	2,334.8	2,341.1	2.00	-2.00	0.00
6,280.0	15.76	84.36	5,722.0	-170.7	2,345.9	2,352.0	2.00	-2.00	0.00
6,320.0	14.96	84.36	5,760.6	-169.7	2,356.4	2,362.5	2.00	-2.00	0.00
6,360.0	14.16	84.36	5,799.3	-168.7	2,366.5	2,372.4	2.00	-2.00	0.00
6,400.0	13.36	84.36	5,838.2	-167.8	2,375.9	2,381.8	2.00	-2.00	0.00
6,440.0	12.56	84.36	5,877.1	-166.9	2,384.8	2,390.6	2.00	-2.00	0.00
6,480.0	11.76	84.36	5,916.2	-166.1	2,393.2	2,399.0	2.00	-2.00	0.00
6,520.0	10.96	84.36	5,955.5	-165.3	2,401.1	2,406.7	2.00	-2.00	0.00
6,560.0	10.16	84.36	5,994.8	-164.6	2,408.4	2,414.0	2.00	-2.00	0.00
6,600.0	9.36	84.36	6,034.2	-163.9	2,415.1	2,420.7	2.00	-2.00	0.00
6,640.0	8.56	84.36	6,073.7	-163.3	2,421.3	2,426.8	2.00	-2.00	0.00
6,680.0	7.76	84.36	6,113.3	-162.7	2,427.0	2,432.4	2.00	-2.00	0.00
6,720.0	6.96	84.36	6,153.0	-162.2	2,432.0	2,437.5	2.00	-2.00	0.00
6,760.0	6.16	84.36	6,192.7	-161.8	2,436.6	2,442.0	2.00	-2.00	0.00
6,800.0	5.36	84.36	6,232.5	-161.4	2,440.6	2,445.9	2.00	-2.00	0.00
6,840.0	4.56	84.36	6,272.4	-161.0	2,444.0	2,449.3	2.00	-2.00	0.00
6,880.0	3.76	84.36	6,312.3	-160.7	2,446.9	2,452.2	2.00	-2.00	0.00
6,920.0	2.96	84.36	6,352.2	-160.5	2,449.2	2,454.5	2.00	-2.00	0.00
6,960.0	2.16	84.36	6,392.2	-160.3	2,451.0	2,456.3	2.00	-2.00	0.00
7,000.0	1.36	84.36	6,432.1	-160.2	2,452.2	2,457.5	2.00	-2.00	0.00
7,040.0	0.56	84.36	6,472.1	-160.2	2,452.9	2,458.1	2.00	-2.00	0.00
7,067.9	0.00	0.00	6,500.0	-160.1	2,453.0	2,458.3	2.00	-2.00	0.00
<b>TARGET BHL 1980'FNL, 750'FEL</b>									
7,080.0	0.00	0.00	6,512.1	-160.1	2,453.0	2,458.3	0.00	0.00	0.00
7,120.0	0.00	0.00	6,552.1	-160.1	2,453.0	2,458.3	0.00	0.00	0.00
7,160.0	0.00	0.00	6,592.1	-160.1	2,453.0	2,458.3	0.00	0.00	0.00
7,200.0	0.00	0.00	6,632.1	-160.1	2,453.0	2,458.3	0.00	0.00	0.00
7,240.0	0.00	0.00	6,672.1	-160.1	2,453.0	2,458.3	0.00	0.00	0.00
7,280.0	0.00	0.00	6,712.1	-160.1	2,453.0	2,458.3	0.00	0.00	0.00
7,320.0	0.00	0.00	6,752.1	-160.1	2,453.0	2,458.3	0.00	0.00	0.00
7,360.0	0.00	0.00	6,792.1	-160.1	2,453.0	2,458.3	0.00	0.00	0.00
7,400.0	0.00	0.00	6,832.1	-160.1	2,453.0	2,458.3	0.00	0.00	0.00
7,403.9	0.00	0.00	6,836.0	-160.1	2,453.0	2,458.3	0.00	0.00	0.00
<b>NIOBRARA - LEGAL BOX 400' X 400' 1985'FNL &amp; 667'FEL - TARGET CIRCLE 1980'FNL &amp; 750'FEL</b>									
7,440.0	0.00	0.00	6,872.1	-160.1	2,453.0	2,458.3	0.00	0.00	0.00
7,480.0	0.00	0.00	6,912.1	-160.1	2,453.0	2,458.3	0.00	0.00	0.00
7,520.0	0.00	0.00	6,952.1	-160.1	2,453.0	2,458.3	0.00	0.00	0.00
7,560.0	0.00	0.00	6,992.1	-160.1	2,453.0	2,458.3	0.00	0.00	0.00
7,600.0	0.00	0.00	7,032.1	-160.1	2,453.0	2,458.3	0.00	0.00	0.00
7,640.0	0.00	0.00	7,072.1	-160.1	2,453.0	2,458.3	0.00	0.00	0.00
7,680.0	0.00	0.00	7,112.1	-160.1	2,453.0	2,458.3	0.00	0.00	0.00
7,720.0	0.00	0.00	7,152.1	-160.1	2,453.0	2,458.3	0.00	0.00	0.00
7,725.9	0.00	0.00	7,158.0	-160.1	2,453.0	2,458.3	0.00	0.00	0.00
<b>CODELL</b>									
7,760.0	0.00	0.00	7,192.1	-160.1	2,453.0	2,458.3	0.00	0.00	0.00
7,800.0	0.00	0.00	7,232.1	-160.1	2,453.0	2,458.3	0.00	0.00	0.00
7,840.0	0.00	0.00	7,272.1	-160.1	2,453.0	2,458.3	0.00	0.00	0.00
7,880.0	0.00	0.00	7,312.1	-160.1	2,453.0	2,458.3	0.00	0.00	0.00
7,920.0	0.00	0.00	7,352.1	-160.1	2,453.0	2,458.3	0.00	0.00	0.00
7,960.0	0.00	0.00	7,392.1	-160.1	2,453.0	2,458.3	0.00	0.00	0.00

<b>Database:</b>	Landmark	<b>Local Co-ordinate Reference:</b>	Well Shaklee USX X25-08D
<b>Company:</b>	NOBLE ENERGY INC WELD COUNTY CO	<b>TVD Reference:</b>	WELL @ 4916.0ft (Original Well Elev)
<b>Project:</b>	SEC.25-T2N-R65W	<b>MD Reference:</b>	WELL @ 4916.0ft (Original Well Elev)
<b>Site:</b>	Shaklee USX X25-02D Pad Sec.25-T2N-R65W	<b>North Reference:</b>	True
<b>Well:</b>	Shaklee USX X25-08D	<b>Survey Calculation Method:</b>	Minimum Curvature
<b>Wellbore:</b>	Wellbore #1		
<b>Design:</b>	Noble Shaklee USX X25-08D Plan #1 (4-19-11)		

**Planned Survey**

Measured Depth (ft)	Inclination (°)	Azimuth (°)	Vertical Depth (ft)	+N/-S (ft)	+E/-W (ft)	Vertical Section (ft)	Dogleg Rate (°/100ft)	Build Rate (°/100ft)	Turn Rate (°/100ft)
8,000.0	0.00	0.00	7,432.1	-160.1	2,453.0	2,458.3	0.00	0.00	0.00
8,040.0	0.00	0.00	7,472.1	-160.1	2,453.0	2,458.3	0.00	0.00	0.00
8,080.0	0.00	0.00	7,512.1	-160.1	2,453.0	2,458.3	0.00	0.00	0.00
8,112.9	0.00	0.00	7,545.0	-160.1	2,453.0	2,458.3	0.00	0.00	0.00
<b>D-SAND</b>									
8,120.0	0.00	0.00	7,552.1	-160.1	2,453.0	2,458.3	0.00	0.00	0.00
8,160.0	0.00	0.00	7,592.1	-160.1	2,453.0	2,458.3	0.00	0.00	0.00
8,170.9	0.00	0.00	7,603.0	-160.1	2,453.0	2,458.3	0.00	0.00	0.00
<b>J-SAND</b>									
8,200.0	0.00	0.00	7,632.1	-160.1	2,453.0	2,458.3	0.00	0.00	0.00
8,240.0	0.00	0.00	7,672.1	-160.1	2,453.0	2,458.3	0.00	0.00	0.00
8,280.0	0.00	0.00	7,712.1	-160.1	2,453.0	2,458.3	0.00	0.00	0.00
8,320.0	0.00	0.00	7,752.1	-160.1	2,453.0	2,458.3	0.00	0.00	0.00
8,320.9	0.00	0.00	7,753.0	-160.1	2,453.0	2,458.3	0.00	0.00	0.00

**Targets**

**Target Name**

- hit/miss target	Dip Angle (°)	Dip Dir. (°)	TVD (ft)	+N/-S (ft)	+E/-W (ft)	Northing (ft)	Easting (ft)	Latitude	Longitude
TARGET BHL 1980'F - plan hits target center - Point	0.00	0.00	6,500.0	-160.1	2,453.0	1,284,638.31	3,250,209.48	40.111260	-104.605410
LEGAL BOX 400' X 400' - plan misses target center by 83.1ft at 7403.9ft MD (6836.0 TVD, -160.1 N, 2453.0 E) - Rectangle (sides W400.0 H400.0 D917.0)	0.00	0.00	6,836.0	-165.1	2,536.0	1,284,634.18	3,250,292.48	40.111246	-104.605113
TARGET CIRCLE 198' - plan hits target center - Circle (radius 75.0)	0.00	0.00	6,836.0	-160.1	2,453.0	1,284,638.31	3,250,209.48	40.111260	-104.605410

**Casing Points**

Measured Depth (ft)	Vertical Depth (ft)	Name	Casing Diameter (")	Hole Diameter (")
851.9	850.0	8 5/8"	8-5/8	12-1/4

**Formations**

Measured Depth (ft)	Vertical Depth (ft)	Name	Lithology	Dip (°)	Dip Direction (°)
7,403.9	6,836.0	NIOBRARA		0.00	
7,725.9	7,158.0	CODELL		0.00	
8,112.9	7,545.0	D-SAND		0.00	
8,170.9	7,603.0	J-SAND		0.00	