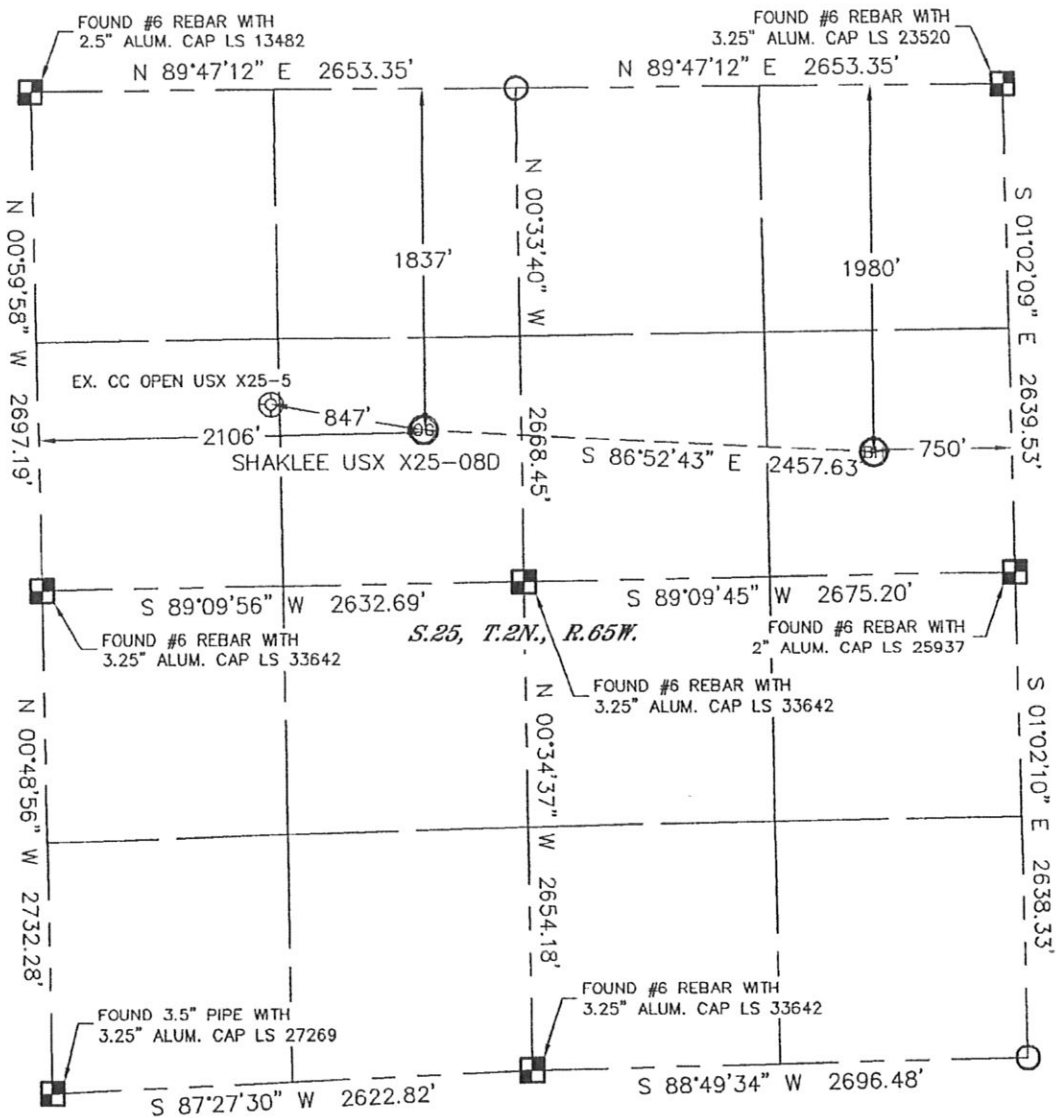


WELL LOCATION CERTIFICATE

THIS MAP DOES NOT REPRESENT A BOUNDARY SURVEY

SECTION: 25
TOWNSHIP: 2N
RANGE: 65W



In accordance with a request from Mike Rodine with Noble Energy Inc., Lat40°, Inc. has determined the surface location of the SHAKLEE USX X25-08D to be 1837' from the NORTH line and 2106' from the WEST line and the bottom hole to be 1980' from the NORTH line and 750' from the EAST line as measured at right angles from the section lines of Section 25, Township 2 North, Range 65 West of the Sixth Principal Meridian, County of Weld, State of Colorado.

I hereby state that this Well Location Certificate was prepared by me, or under my direct supervision, that the fieldwork was completed on 3/1/11, for and on behalf of Noble Energy Inc. That this is not a Land Survey Plat or an Improvement Survey Plat, and that it is not to be relied upon for establishment of fence, building, or other future improvement lines.

NOTE:

- 1) Bearings shown are Grid Bearings of the Colorado State Plane Coordinate System, North Zone, North American Datum 1983/2007. The lineal dimensions as contained herein are based upon the "U.S. Survey Foot."
- 2) Ground elevations are based on an observed GPS elevation (NAVD 1988 DATUM).
- 3) NEAREST EXISTING WELL: CC OPEN USX X25-5 847'
- 4) IMPROVEMENTS: See LOCATION DRAWING for all visible improvements within 400' of disturbed area.
- 5) SURFACE USE: RANGELAND
- 6) INSTRUMENT OPERATOR: BRIAN BRINKMAN



SURFACE LOCATION	BOTTOM HOLE
LATITUDE: 40.11170N	LATITUDE: 40.11126N
LONGITUDE: 104.61418W	LONGITUDE: 104.60541W
PDOP: 1.9	
ELEV: 4903'	
1/4,1/4: SE1/4NW1/4	
NEAREST PROPERTY LINE: 533' EAST	



NOTE

According to Colorado law, you must commence any legal action based upon any defect in this W.L.C. within three years after you discover such defect. In no event, may any action based upon any defect in this survey be commenced more than ten years after the date of the certificate shown hereon. (13-80-105 C.R.S.)

LEGEND

-  = ALIQUOT MONUMENT AS DESCRIBED
-  = CALCULATED POSITION

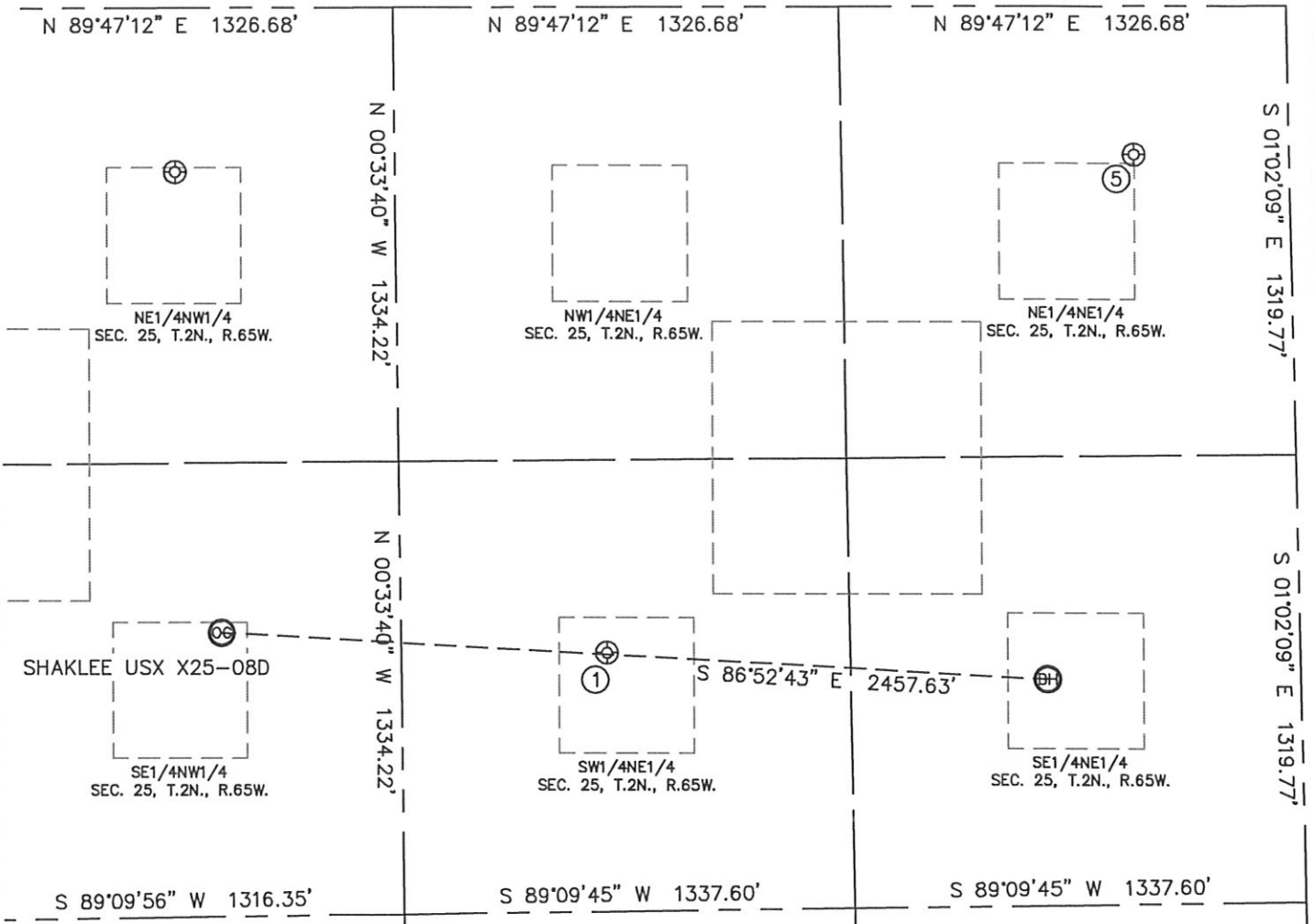
Brian T. Brinkman—On behalf of Lat40°, Inc.
Colorado Licensed Professional
Land Surveyor No. 38175

PROJECT# 2011033

SITE SKETCH

SHAKLEE USX X25-08D

SECTION: 25
TOWNSHIP: 2N
RANGE: 65W



- | | |
|------------------|------------------|
| ① | ⑤ |
| SHAKLEE 32-25 | SHAKLEE 41-25 |
| SW1/4NE1/4 | NE1/4NE1/4 |
| 1899' FNL | 436' FNL |
| 2058' FEL | 461' FEL |
| LAT-40.11151°N | LAT-40.11549°N |
| LONG-104.61009°W | LONG-104.60442°W |
| PDOP: 2.0 | PDOP: 0.9 |
| ELEV: 4898' | ELEV: 4897' |

