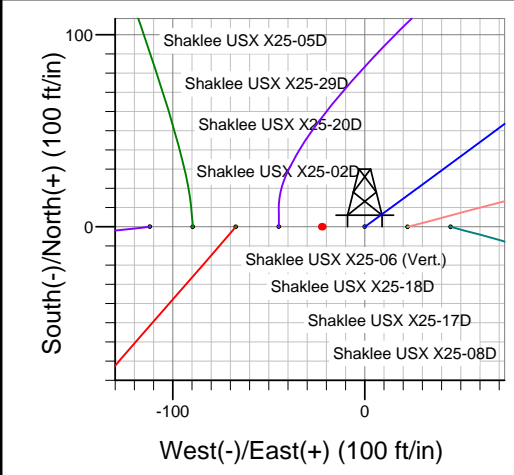
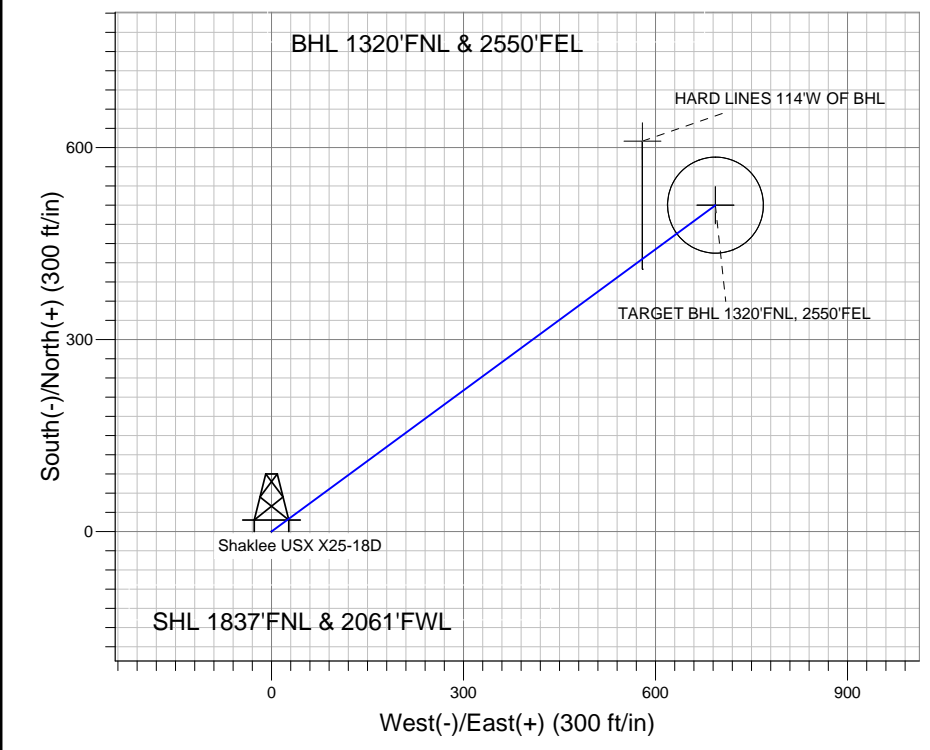
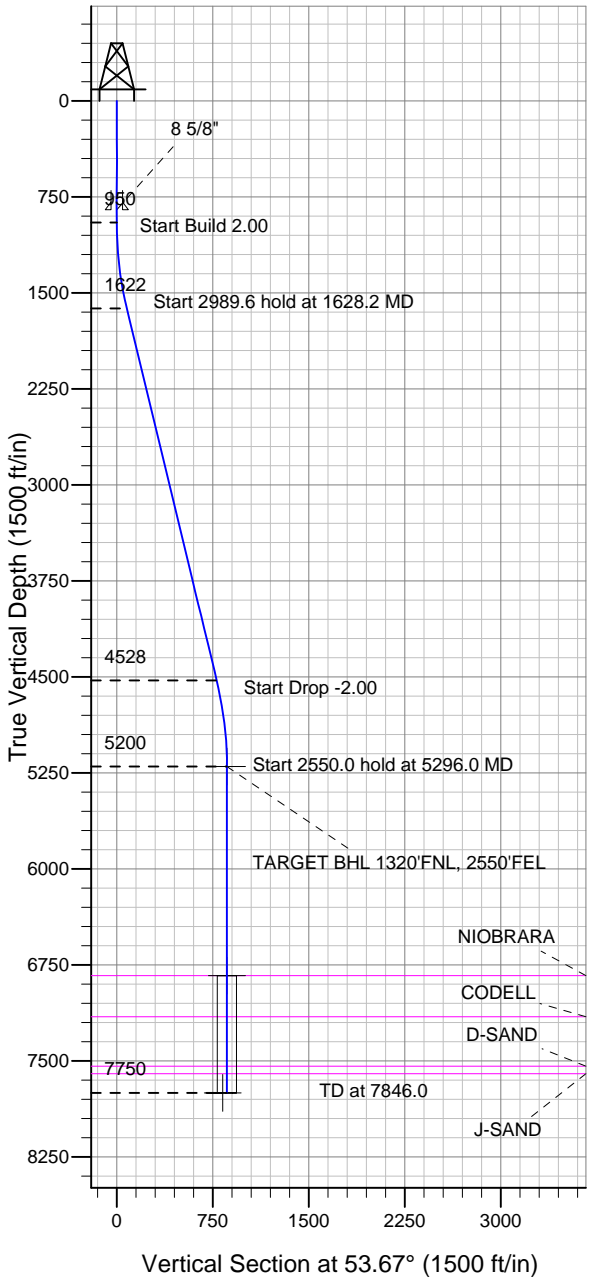


Well Name: Shaklee USX X25-18D

Surface Location: Shaklee USX X25-02D Pad Sec.25-T2N-R65W
 North American Datum 1983 US State Plane 1983 Colorado Northern Zone
 Ground Elevation: 4903.0
 +N/-S +E/-W Northing Easting Latitude Longitude Slot
 0.0 0.0 1284773.50 3247710.31 40.111700 -104.614340
 Original Well Elev WELL @ 4916.0ft (Original Well Elev)

NOBLE ENERGY INC WELD COUNTY CO



Shaklee USX X25-02D Pad Sec.25-T2N-R65W
 Shaklee USX X25-18D
 Noble Shaklee USX X25-18D Plan #1 (4-19-11)
 12:30, April 26 2011

Azimuths to True North
 Magnetic North: 8.78°

Magnetic Field
 Strength: 53009.8snT
 Dip Angle: 66.85°
 Date: 4/26/2011
 Model: IGRF2010

WELLBORE TARGET DETAILS (LAT/LONG)

Name	TVD	+N/-S	+E/-W	Latitude	Longitude	Shape
TARGET BHL 1320'FNL, 2550'FEL	5200.0	510.0	693.7	40.113100	-104.611860	Point
TARGET CIRCLE 1320'FNL & 2550'FEL	6833.0	510.0	693.7	40.113100	-104.611860	Circle (Radius: 75.0)
HARD LINES 114'W OF BHL	7750.0	610.0	579.7	40.113374	-104.612267	Polygon

SECTION DETAILS

Sec	MD	Inc	Azi	TVD	+N/-S	+E/-W	DLeg	TFace	VSec	Target
1	0.0	0.00	0.00	0.0	0.0	0.0	0.00	0.00	0.0	
2	950.0	0.00	0.00	950.0	0.0	0.0	0.00	0.00	0.0	
3	1628.2	13.56	53.67	1621.9	47.3	64.4	2.00	53.67	79.9	
4	4617.8	13.56	53.67	4528.1	462.7	629.3	0.00	0.00	781.1	
5	5296.0	0.00	0.00	5200.0	510.0	693.7	2.00	180.00	861.0	TARGET BHL 1320'FNL, 2550'FEL
6	7846.0	0.00	0.00	7750.0	510.0	693.7	0.00	0.00	861.0	



Directional

NOBLE ENERGY INC WELD COUNTY CO

SEC.25-T2N-R65W

Shaklee USX X25-02D Pad Sec.25-T2N-R65W

Shaklee USX X25-18D

Wellbore #1

Plan: Noble Shaklee USX X25-18D Plan #1 (4-19-11)

Standard Planning Report

26 April, 2011



Database:	Landmark	Local Co-ordinate Reference:	Well Shaklee USX X25-18D
Company:	NOBLE ENERGY INC WELD COUNTY CO	TVD Reference:	WELL @ 4916.0ft (Original Well Elev)
Project:	SEC.25-T2N-R65W	MD Reference:	WELL @ 4916.0ft (Original Well Elev)
Site:	Shaklee USX X25-02D Pad Sec.25-T2N-R65W	North Reference:	True
Well:	Shaklee USX X25-18D	Survey Calculation Method:	Minimum Curvature
Wellbore:	Wellbore #1		
Design:	Noble Shaklee USX X25-18D Plan #1 (4-19-11)		

Project	SEC.25-T2N-R65W, Weld County, Colorado,		
Map System:	US State Plane 1983	System Datum:	Mean Sea Level
Geo Datum:	North American Datum 1983		Using Well Reference Point
Map Zone:	Colorado Northern Zone		Using geodetic scale factor

Site	Shaklee USX X25-02D Pad Sec.25-T2N-R65W				
Site Position:		Northing:	1,284,773.06 ft	Latitude:	40.111700
From:	Lat/Long	Easting:	3,247,665.57 ft	Longitude:	-104.614500
Position Uncertainty:	0.0 ft	Slot Radius:	"	Grid Convergence:	0.57 °

Well	Shaklee USX X25-18D					
Well Position	+N/-S	0.0 ft	Northing:	1,284,773.50 ft	Latitude:	40.111700
	+E/-W	44.8 ft	Easting:	3,247,710.31 ft	Longitude:	-104.614340
Position Uncertainty		0.0 ft	Wellhead Elevation:	ft	Ground Level:	4,903.0 ft

Wellbore	Wellbore #1				
Magnetics	Model Name	Sample Date	Declination (°)	Dip Angle (°)	Field Strength (nT)
	IGRF2010	4/26/2011	8.78	66.85	53,010

Design	Noble Shaklee USX X25-18D Plan #1 (4-19-11)			
Audit Notes:				
Version:	Phase:	PROTOTYPE	Tie On Depth:	0.0
Vertical Section:	Depth From (TVD) (ft)	+N/-S (ft)	+E/-W (ft)	Direction (°)
	0.0	0.0	0.0	53.67

Plan Sections										
Measured Depth (ft)	Inclination (°)	Azimuth (°)	Vertical Depth (ft)	+N/-S (ft)	+E/-W (ft)	Dogleg Rate (°/100ft)	Build Rate (°/100ft)	Turn Rate (°/100ft)	TFO (°)	Target
0.0	0.00	0.00	0.0	0.0	0.0	0.00	0.00	0.00	0.00	
950.0	0.00	0.00	950.0	0.0	0.0	0.00	0.00	0.00	0.00	
1,628.2	13.56	53.67	1,621.9	47.3	64.4	2.00	2.00	0.00	53.67	
4,617.8	13.56	53.67	4,528.1	462.7	629.3	0.00	0.00	0.00	0.00	
5,296.0	0.00	0.00	5,200.0	510.0	693.7	2.00	-2.00	0.00	180.00	TARGET BHL 132C
7,846.0	0.00	0.00	7,750.0	510.0	693.7	0.00	0.00	0.00	0.00	

Database:	Landmark	Local Co-ordinate Reference:	Well Shaklee USX X25-18D
Company:	NOBLE ENERGY INC WELD COUNTY CO	TVD Reference:	WELL @ 4916.0ft (Original Well Elev)
Project:	SEC.25-T2N-R65W	MD Reference:	WELL @ 4916.0ft (Original Well Elev)
Site:	Shaklee USX X25-02D Pad Sec.25-T2N-R65W	North Reference:	True
Well:	Shaklee USX X25-18D	Survey Calculation Method:	Minimum Curvature
Wellbore:	Wellbore #1		
Design:	Noble Shaklee USX X25-18D Plan #1 (4-19-11)		

Planned Survey

Measured Depth (ft)	Inclination (°)	Azimuth (°)	Vertical Depth (ft)	+N-/S (ft)	+E-/W (ft)	Vertical Section (ft)	Dogleg Rate (°/100ft)	Build Rate (°/100ft)	Turn Rate (°/100ft)
0.0	0.00	0.00	0.0	0.0	0.0	0.0	0.00	0.00	0.00
40.0	0.00	0.00	40.0	0.0	0.0	0.0	0.00	0.00	0.00
80.0	0.00	0.00	80.0	0.0	0.0	0.0	0.00	0.00	0.00
120.0	0.00	0.00	120.0	0.0	0.0	0.0	0.00	0.00	0.00
160.0	0.00	0.00	160.0	0.0	0.0	0.0	0.00	0.00	0.00
200.0	0.00	0.00	200.0	0.0	0.0	0.0	0.00	0.00	0.00
240.0	0.00	0.00	240.0	0.0	0.0	0.0	0.00	0.00	0.00
280.0	0.00	0.00	280.0	0.0	0.0	0.0	0.00	0.00	0.00
320.0	0.00	0.00	320.0	0.0	0.0	0.0	0.00	0.00	0.00
360.0	0.00	0.00	360.0	0.0	0.0	0.0	0.00	0.00	0.00
400.0	0.00	0.00	400.0	0.0	0.0	0.0	0.00	0.00	0.00
440.0	0.00	0.00	440.0	0.0	0.0	0.0	0.00	0.00	0.00
480.0	0.00	0.00	480.0	0.0	0.0	0.0	0.00	0.00	0.00
520.0	0.00	0.00	520.0	0.0	0.0	0.0	0.00	0.00	0.00
560.0	0.00	0.00	560.0	0.0	0.0	0.0	0.00	0.00	0.00
600.0	0.00	0.00	600.0	0.0	0.0	0.0	0.00	0.00	0.00
640.0	0.00	0.00	640.0	0.0	0.0	0.0	0.00	0.00	0.00
680.0	0.00	0.00	680.0	0.0	0.0	0.0	0.00	0.00	0.00
720.0	0.00	0.00	720.0	0.0	0.0	0.0	0.00	0.00	0.00
760.0	0.00	0.00	760.0	0.0	0.0	0.0	0.00	0.00	0.00
800.0	0.00	0.00	800.0	0.0	0.0	0.0	0.00	0.00	0.00
840.0	0.00	0.00	840.0	0.0	0.0	0.0	0.00	0.00	0.00
850.0	0.00	0.00	850.0	0.0	0.0	0.0	0.00	0.00	0.00
8 5/8"									
880.0	0.00	0.00	880.0	0.0	0.0	0.0	0.00	0.00	0.00
920.0	0.00	0.00	920.0	0.0	0.0	0.0	0.00	0.00	0.00
950.0	0.00	0.00	950.0	0.0	0.0	0.0	0.00	0.00	0.00
960.0	0.20	53.67	960.0	0.0	0.0	0.0	2.00	2.00	0.00
1,000.0	1.00	53.67	1,000.0	0.3	0.4	0.4	2.00	2.00	0.00
1,040.0	1.80	53.67	1,040.0	0.8	1.1	1.4	2.00	2.00	0.00
1,080.0	2.60	53.67	1,080.0	1.7	2.4	2.9	2.00	2.00	0.00
1,120.0	3.40	53.67	1,119.9	3.0	4.1	5.0	2.00	2.00	0.00
1,160.0	4.20	53.67	1,159.8	4.6	6.2	7.7	2.00	2.00	0.00
1,200.0	5.00	53.67	1,199.7	6.5	8.8	10.9	2.00	2.00	0.00
1,240.0	5.80	53.67	1,239.5	8.7	11.8	14.7	2.00	2.00	0.00
1,280.0	6.60	53.67	1,279.3	11.2	15.3	19.0	2.00	2.00	0.00
1,320.0	7.40	53.67	1,319.0	14.1	19.2	23.9	2.00	2.00	0.00
1,360.0	8.20	53.67	1,358.6	17.4	23.6	29.3	2.00	2.00	0.00
1,400.0	9.00	53.67	1,398.2	20.9	28.4	35.3	2.00	2.00	0.00
1,440.0	9.80	53.67	1,437.6	24.8	33.7	41.8	2.00	2.00	0.00
1,480.0	10.60	53.67	1,477.0	29.0	39.4	48.9	2.00	2.00	0.00
1,520.0	11.40	53.67	1,516.2	33.5	45.5	56.5	2.00	2.00	0.00
1,560.0	12.20	53.67	1,555.4	38.3	52.1	64.7	2.00	2.00	0.00
1,600.0	13.00	53.67	1,594.4	43.5	59.2	73.4	2.00	2.00	0.00
1,628.2	13.56	53.67	1,621.9	47.3	64.4	79.9	2.00	2.00	0.00
1,640.0	13.56	53.67	1,633.4	49.0	66.6	82.7	0.00	0.00	0.00
1,680.0	13.56	53.67	1,672.2	54.5	74.2	92.1	0.00	0.00	0.00
1,720.0	13.56	53.67	1,711.1	60.1	81.7	101.4	0.00	0.00	0.00
1,760.0	13.56	53.67	1,750.0	65.6	89.3	110.8	0.00	0.00	0.00
1,800.0	13.56	53.67	1,788.9	71.2	96.8	120.2	0.00	0.00	0.00
1,840.0	13.56	53.67	1,827.8	76.8	104.4	129.6	0.00	0.00	0.00
1,880.0	13.56	53.67	1,866.7	82.3	112.0	139.0	0.00	0.00	0.00
1,920.0	13.56	53.67	1,905.5	87.9	119.5	148.3	0.00	0.00	0.00

Database:	Landmark	Local Co-ordinate Reference:	Well Shaklee USX X25-18D
Company:	NOBLE ENERGY INC WELD COUNTY CO	TVD Reference:	WELL @ 4916.0ft (Original Well Elev)
Project:	SEC.25-T2N-R65W	MD Reference:	WELL @ 4916.0ft (Original Well Elev)
Site:	Shaklee USX X25-02D Pad Sec.25-T2N-R65W	North Reference:	True
Well:	Shaklee USX X25-18D	Survey Calculation Method:	Minimum Curvature
Wellbore:	Wellbore #1		
Design:	Noble Shaklee USX X25-18D Plan #1 (4-19-11)		

Planned Survey

Measured Depth (ft)	Inclination (°)	Azimuth (°)	Vertical Depth (ft)	+N/-S (ft)	+E/-W (ft)	Vertical Section (ft)	Dogleg Rate (°/100ft)	Build Rate (°/100ft)	Turn Rate (°/100ft)
1,960.0	13.56	53.67	1,944.4	93.4	127.1	157.7	0.00	0.00	0.00
2,000.0	13.56	53.67	1,983.3	99.0	134.6	167.1	0.00	0.00	0.00
2,040.0	13.56	53.67	2,022.2	104.5	142.2	176.5	0.00	0.00	0.00
2,080.0	13.56	53.67	2,061.1	110.1	149.7	185.9	0.00	0.00	0.00
2,120.0	13.56	53.67	2,100.0	115.7	157.3	195.2	0.00	0.00	0.00
2,160.0	13.56	53.67	2,138.8	121.2	164.9	204.6	0.00	0.00	0.00
2,200.0	13.56	53.67	2,177.7	126.8	172.4	214.0	0.00	0.00	0.00
2,240.0	13.56	53.67	2,216.6	132.3	180.0	223.4	0.00	0.00	0.00
2,280.0	13.56	53.67	2,255.5	137.9	187.5	232.8	0.00	0.00	0.00
2,320.0	13.56	53.67	2,294.4	143.4	195.1	242.2	0.00	0.00	0.00
2,360.0	13.56	53.67	2,333.3	149.0	202.7	251.5	0.00	0.00	0.00
2,400.0	13.56	53.67	2,372.2	154.6	210.2	260.9	0.00	0.00	0.00
2,440.0	13.56	53.67	2,411.0	160.1	217.8	270.3	0.00	0.00	0.00
2,480.0	13.56	53.67	2,449.9	165.7	225.3	279.7	0.00	0.00	0.00
2,520.0	13.56	53.67	2,488.8	171.2	232.9	289.1	0.00	0.00	0.00
2,560.0	13.56	53.67	2,527.7	176.8	240.4	298.4	0.00	0.00	0.00
2,600.0	13.56	53.67	2,566.6	182.4	248.0	307.8	0.00	0.00	0.00
2,640.0	13.56	53.67	2,605.5	187.9	255.6	317.2	0.00	0.00	0.00
2,680.0	13.56	53.67	2,644.3	193.5	263.1	326.6	0.00	0.00	0.00
2,720.0	13.56	53.67	2,683.2	199.0	270.7	336.0	0.00	0.00	0.00
2,760.0	13.56	53.67	2,722.1	204.6	278.2	345.4	0.00	0.00	0.00
2,800.0	13.56	53.67	2,761.0	210.1	285.8	354.7	0.00	0.00	0.00
2,840.0	13.56	53.67	2,799.9	215.7	293.4	364.1	0.00	0.00	0.00
2,880.0	13.56	53.67	2,838.8	221.3	300.9	373.5	0.00	0.00	0.00
2,920.0	13.56	53.67	2,877.7	226.8	308.5	382.9	0.00	0.00	0.00
2,960.0	13.56	53.67	2,916.5	232.4	316.0	392.3	0.00	0.00	0.00
3,000.0	13.56	53.67	2,955.4	237.9	323.6	401.6	0.00	0.00	0.00
3,040.0	13.56	53.67	2,994.3	243.5	331.1	411.0	0.00	0.00	0.00
3,080.0	13.56	53.67	3,033.2	249.0	338.7	420.4	0.00	0.00	0.00
3,120.0	13.56	53.67	3,072.1	254.6	346.3	429.8	0.00	0.00	0.00
3,160.0	13.56	53.67	3,111.0	260.2	353.8	439.2	0.00	0.00	0.00
3,200.0	13.56	53.67	3,149.8	265.7	361.4	448.5	0.00	0.00	0.00
3,240.0	13.56	53.67	3,188.7	271.3	368.9	457.9	0.00	0.00	0.00
3,280.0	13.56	53.67	3,227.6	276.8	376.5	467.3	0.00	0.00	0.00
3,320.0	13.56	53.67	3,266.5	282.4	384.1	476.7	0.00	0.00	0.00
3,360.0	13.56	53.67	3,305.4	287.9	391.6	486.1	0.00	0.00	0.00
3,400.0	13.56	53.67	3,344.3	293.5	399.2	495.5	0.00	0.00	0.00
3,440.0	13.56	53.67	3,383.1	299.1	406.7	504.8	0.00	0.00	0.00
3,480.0	13.56	53.67	3,422.0	304.6	414.3	514.2	0.00	0.00	0.00
3,520.0	13.56	53.67	3,460.9	310.2	421.8	523.6	0.00	0.00	0.00
3,560.0	13.56	53.67	3,499.8	315.7	429.4	533.0	0.00	0.00	0.00
3,600.0	13.56	53.67	3,538.7	321.3	437.0	542.4	0.00	0.00	0.00
3,640.0	13.56	53.67	3,577.6	326.8	444.5	551.7	0.00	0.00	0.00
3,680.0	13.56	53.67	3,616.5	332.4	452.1	561.1	0.00	0.00	0.00
3,720.0	13.56	53.67	3,655.3	338.0	459.6	570.5	0.00	0.00	0.00
3,760.0	13.56	53.67	3,694.2	343.5	467.2	579.9	0.00	0.00	0.00
3,800.0	13.56	53.67	3,733.1	349.1	474.8	589.3	0.00	0.00	0.00
3,840.0	13.56	53.67	3,772.0	354.6	482.3	598.7	0.00	0.00	0.00
3,880.0	13.56	53.67	3,810.9	360.2	489.9	608.0	0.00	0.00	0.00
3,920.0	13.56	53.67	3,849.8	365.7	497.4	617.4	0.00	0.00	0.00
3,960.0	13.56	53.67	3,888.6	371.3	505.0	626.8	0.00	0.00	0.00
4,000.0	13.56	53.67	3,927.5	376.9	512.5	636.2	0.00	0.00	0.00
4,040.0	13.56	53.67	3,966.4	382.4	520.1	645.6	0.00	0.00	0.00

Database:	Landmark	Local Co-ordinate Reference:	Well Shaklee USX X25-18D
Company:	NOBLE ENERGY INC WELD COUNTY CO	TVD Reference:	WELL @ 4916.0ft (Original Well Elev)
Project:	SEC.25-T2N-R65W	MD Reference:	WELL @ 4916.0ft (Original Well Elev)
Site:	Shaklee USX X25-02D Pad Sec.25-T2N-R65W	North Reference:	True
Well:	Shaklee USX X25-18D	Survey Calculation Method:	Minimum Curvature
Wellbore:	Wellbore #1		
Design:	Noble Shaklee USX X25-18D Plan #1 (4-19-11)		

Planned Survey

Measured Depth (ft)	Inclination (°)	Azimuth (°)	Vertical Depth (ft)	+N/-S (ft)	+E/-W (ft)	Vertical Section (ft)	Dogleg Rate (°/100ft)	Build Rate (°/100ft)	Turn Rate (°/100ft)
4,080.0	13.56	53.67	4,005.3	388.0	527.7	654.9	0.00	0.00	0.00
4,120.0	13.56	53.67	4,044.2	393.5	535.2	664.3	0.00	0.00	0.00
4,160.0	13.56	53.67	4,083.1	399.1	542.8	673.7	0.00	0.00	0.00
4,200.0	13.56	53.67	4,121.9	404.6	550.3	683.1	0.00	0.00	0.00
4,240.0	13.56	53.67	4,160.8	410.2	557.9	692.5	0.00	0.00	0.00
4,280.0	13.56	53.67	4,199.7	415.8	565.4	701.9	0.00	0.00	0.00
4,320.0	13.56	53.67	4,238.6	421.3	573.0	711.2	0.00	0.00	0.00
4,360.0	13.56	53.67	4,277.5	426.9	580.6	720.6	0.00	0.00	0.00
4,400.0	13.56	53.67	4,316.4	432.4	588.1	730.0	0.00	0.00	0.00
4,440.0	13.56	53.67	4,355.3	438.0	595.7	739.4	0.00	0.00	0.00
4,480.0	13.56	53.67	4,394.1	443.6	603.2	748.8	0.00	0.00	0.00
4,520.0	13.56	53.67	4,433.0	449.1	610.8	758.1	0.00	0.00	0.00
4,560.0	13.56	53.67	4,471.9	454.7	618.4	767.5	0.00	0.00	0.00
4,600.0	13.56	53.67	4,510.8	460.2	625.9	776.9	0.00	0.00	0.00
4,617.8	13.56	53.67	4,528.1	462.7	629.3	781.1	0.00	0.00	0.00
4,640.0	13.12	53.67	4,549.7	465.7	633.4	786.2	2.00	-2.00	0.00
4,680.0	12.32	53.67	4,588.7	470.9	640.5	795.0	2.00	-2.00	0.00
4,720.0	11.52	53.67	4,627.8	475.8	647.2	803.3	2.00	-2.00	0.00
4,760.0	10.72	53.67	4,667.1	480.4	653.4	811.0	2.00	-2.00	0.00
4,800.0	9.92	53.67	4,706.5	484.7	659.1	818.2	2.00	-2.00	0.00
4,840.0	9.12	53.67	4,745.9	488.6	664.5	824.8	2.00	-2.00	0.00
4,880.0	8.32	53.67	4,785.4	492.2	669.4	830.8	2.00	-2.00	0.00
4,920.0	7.52	53.67	4,825.1	495.4	673.8	836.3	2.00	-2.00	0.00
4,960.0	6.72	53.67	4,864.7	498.4	677.8	841.3	2.00	-2.00	0.00
5,000.0	5.92	53.67	4,904.5	501.0	681.3	845.7	2.00	-2.00	0.00
5,040.0	5.12	53.67	4,944.3	503.3	684.4	849.6	2.00	-2.00	0.00
5,080.0	4.32	53.67	4,984.2	505.2	687.1	852.8	2.00	-2.00	0.00
5,120.0	3.52	53.67	5,024.1	506.8	689.3	855.6	2.00	-2.00	0.00
5,160.0	2.72	53.67	5,064.0	508.1	691.1	857.8	2.00	-2.00	0.00
5,200.0	1.92	53.67	5,104.0	509.1	692.4	859.4	2.00	-2.00	0.00
5,240.0	1.12	53.67	5,144.0	509.7	693.2	860.4	2.00	-2.00	0.00
5,280.0	0.32	53.67	5,184.0	510.0	693.6	860.9	2.00	-2.00	0.00
5,296.0	0.00	0.00	5,200.0	510.0	693.7	861.0	2.00	-2.00	-334.96
TARGET BHL 1320'FNL, 2550'FEL									
5,320.0	0.00	0.00	5,224.0	510.0	693.7	861.0	0.00	0.00	0.00
5,360.0	0.00	0.00	5,264.0	510.0	693.7	861.0	0.00	0.00	0.00
5,400.0	0.00	0.00	5,304.0	510.0	693.7	861.0	0.00	0.00	0.00
5,440.0	0.00	0.00	5,344.0	510.0	693.7	861.0	0.00	0.00	0.00
5,480.0	0.00	0.00	5,384.0	510.0	693.7	861.0	0.00	0.00	0.00
5,520.0	0.00	0.00	5,424.0	510.0	693.7	861.0	0.00	0.00	0.00
5,560.0	0.00	0.00	5,464.0	510.0	693.7	861.0	0.00	0.00	0.00
5,600.0	0.00	0.00	5,504.0	510.0	693.7	861.0	0.00	0.00	0.00
5,640.0	0.00	0.00	5,544.0	510.0	693.7	861.0	0.00	0.00	0.00
5,680.0	0.00	0.00	5,584.0	510.0	693.7	861.0	0.00	0.00	0.00
5,720.0	0.00	0.00	5,624.0	510.0	693.7	861.0	0.00	0.00	0.00
5,760.0	0.00	0.00	5,664.0	510.0	693.7	861.0	0.00	0.00	0.00
5,800.0	0.00	0.00	5,704.0	510.0	693.7	861.0	0.00	0.00	0.00
5,840.0	0.00	0.00	5,744.0	510.0	693.7	861.0	0.00	0.00	0.00
5,880.0	0.00	0.00	5,784.0	510.0	693.7	861.0	0.00	0.00	0.00
5,920.0	0.00	0.00	5,824.0	510.0	693.7	861.0	0.00	0.00	0.00
5,960.0	0.00	0.00	5,864.0	510.0	693.7	861.0	0.00	0.00	0.00
6,000.0	0.00	0.00	5,904.0	510.0	693.7	861.0	0.00	0.00	0.00
6,040.0	0.00	0.00	5,944.0	510.0	693.7	861.0	0.00	0.00	0.00

Database:	Landmark	Local Co-ordinate Reference:	Well Shaklee USX X25-18D
Company:	NOBLE ENERGY INC WELD COUNTY CO	TVD Reference:	WELL @ 4916.0ft (Original Well Elev)
Project:	SEC.25-T2N-R65W	MD Reference:	WELL @ 4916.0ft (Original Well Elev)
Site:	Shaklee USX X25-02D Pad Sec.25-T2N-R65W	North Reference:	True
Well:	Shaklee USX X25-18D	Survey Calculation Method:	Minimum Curvature
Wellbore:	Wellbore #1		
Design:	Noble Shaklee USX X25-18D Plan #1 (4-19-11)		

Planned Survey

Measured Depth (ft)	Inclination (°)	Azimuth (°)	Vertical Depth (ft)	+N/-S (ft)	+E/-W (ft)	Vertical Section (ft)	Dogleg Rate (°/100ft)	Build Rate (°/100ft)	Turn Rate (°/100ft)
6,080.0	0.00	0.00	5,984.0	510.0	693.7	861.0	0.00	0.00	0.00
6,120.0	0.00	0.00	6,024.0	510.0	693.7	861.0	0.00	0.00	0.00
6,160.0	0.00	0.00	6,064.0	510.0	693.7	861.0	0.00	0.00	0.00
6,200.0	0.00	0.00	6,104.0	510.0	693.7	861.0	0.00	0.00	0.00
6,240.0	0.00	0.00	6,144.0	510.0	693.7	861.0	0.00	0.00	0.00
6,280.0	0.00	0.00	6,184.0	510.0	693.7	861.0	0.00	0.00	0.00
6,320.0	0.00	0.00	6,224.0	510.0	693.7	861.0	0.00	0.00	0.00
6,360.0	0.00	0.00	6,264.0	510.0	693.7	861.0	0.00	0.00	0.00
6,400.0	0.00	0.00	6,304.0	510.0	693.7	861.0	0.00	0.00	0.00
6,440.0	0.00	0.00	6,344.0	510.0	693.7	861.0	0.00	0.00	0.00
6,480.0	0.00	0.00	6,384.0	510.0	693.7	861.0	0.00	0.00	0.00
6,520.0	0.00	0.00	6,424.0	510.0	693.7	861.0	0.00	0.00	0.00
6,560.0	0.00	0.00	6,464.0	510.0	693.7	861.0	0.00	0.00	0.00
6,600.0	0.00	0.00	6,504.0	510.0	693.7	861.0	0.00	0.00	0.00
6,640.0	0.00	0.00	6,544.0	510.0	693.7	861.0	0.00	0.00	0.00
6,680.0	0.00	0.00	6,584.0	510.0	693.7	861.0	0.00	0.00	0.00
6,720.0	0.00	0.00	6,624.0	510.0	693.7	861.0	0.00	0.00	0.00
6,760.0	0.00	0.00	6,664.0	510.0	693.7	861.0	0.00	0.00	0.00
6,800.0	0.00	0.00	6,704.0	510.0	693.7	861.0	0.00	0.00	0.00
6,840.0	0.00	0.00	6,744.0	510.0	693.7	861.0	0.00	0.00	0.00
6,880.0	0.00	0.00	6,784.0	510.0	693.7	861.0	0.00	0.00	0.00
6,920.0	0.00	0.00	6,824.0	510.0	693.7	861.0	0.00	0.00	0.00
6,929.0	0.00	0.00	6,833.0	510.0	693.7	861.0	0.00	0.00	0.00
NIORRARA - TARGET CIRCLE 1320'FNL & 2550'FEL									
6,960.0	0.00	0.00	6,864.0	510.0	693.7	861.0	0.00	0.00	0.00
7,000.0	0.00	0.00	6,904.0	510.0	693.7	861.0	0.00	0.00	0.00
7,040.0	0.00	0.00	6,944.0	510.0	693.7	861.0	0.00	0.00	0.00
7,080.0	0.00	0.00	6,984.0	510.0	693.7	861.0	0.00	0.00	0.00
7,120.0	0.00	0.00	7,024.0	510.0	693.7	861.0	0.00	0.00	0.00
7,160.0	0.00	0.00	7,064.0	510.0	693.7	861.0	0.00	0.00	0.00
7,200.0	0.00	0.00	7,104.0	510.0	693.7	861.0	0.00	0.00	0.00
7,240.0	0.00	0.00	7,144.0	510.0	693.7	861.0	0.00	0.00	0.00
7,251.0	0.00	0.00	7,155.0	510.0	693.7	861.0	0.00	0.00	0.00
CODELL									
7,280.0	0.00	0.00	7,184.0	510.0	693.7	861.0	0.00	0.00	0.00
7,320.0	0.00	0.00	7,224.0	510.0	693.7	861.0	0.00	0.00	0.00
7,360.0	0.00	0.00	7,264.0	510.0	693.7	861.0	0.00	0.00	0.00
7,400.0	0.00	0.00	7,304.0	510.0	693.7	861.0	0.00	0.00	0.00
7,440.0	0.00	0.00	7,344.0	510.0	693.7	861.0	0.00	0.00	0.00
7,480.0	0.00	0.00	7,384.0	510.0	693.7	861.0	0.00	0.00	0.00
7,520.0	0.00	0.00	7,424.0	510.0	693.7	861.0	0.00	0.00	0.00
7,560.0	0.00	0.00	7,464.0	510.0	693.7	861.0	0.00	0.00	0.00
7,600.0	0.00	0.00	7,504.0	510.0	693.7	861.0	0.00	0.00	0.00
7,638.0	0.00	0.00	7,542.0	510.0	693.7	861.0	0.00	0.00	0.00
D-SAND									
7,640.0	0.00	0.00	7,544.0	510.0	693.7	861.0	0.00	0.00	0.00
7,680.0	0.00	0.00	7,584.0	510.0	693.7	861.0	0.00	0.00	0.00
7,696.0	0.00	0.00	7,600.0	510.0	693.7	861.0	0.00	0.00	0.00
J-SAND									
7,720.0	0.00	0.00	7,624.0	510.0	693.7	861.0	0.00	0.00	0.00
7,760.0	0.00	0.00	7,664.0	510.0	693.7	861.0	0.00	0.00	0.00
7,800.0	0.00	0.00	7,704.0	510.0	693.7	861.0	0.00	0.00	0.00

Database:	Landmark	Local Co-ordinate Reference:	Well Shaklee USX X25-18D
Company:	NOBLE ENERGY INC WELD COUNTY CO	TVD Reference:	WELL @ 4916.0ft (Original Well Elev)
Project:	SEC.25-T2N-R65W	MD Reference:	WELL @ 4916.0ft (Original Well Elev)
Site:	Shaklee USX X25-02D Pad Sec.25-T2N-R65W	North Reference:	True
Well:	Shaklee USX X25-18D	Survey Calculation Method:	Minimum Curvature
Wellbore:	Wellbore #1		
Design:	Noble Shaklee USX X25-18D Plan #1 (4-19-11)		

Planned Survey										
Measured Depth (ft)	Inclination (°)	Azimuth (°)	Vertical Depth (ft)	+N/-S (ft)	+E/-W (ft)	Vertical Section (ft)	Dogleg Rate (°/100ft)	Build Rate (°/100ft)	Turn Rate (°/100ft)	
7,840.0	0.00	0.00	7,744.0	510.0	693.7	861.0	0.00	0.00	0.00	
7,846.0	0.00	0.00	7,750.0	510.0	693.7	861.0	0.00	0.00	0.00	
HARD LINES 114'W OF BHL										

Targets											
Target Name	- hit/miss target	- Shape	Dip Angle (°)	Dip Dir. (°)	TVD (ft)	+N/-S (ft)	+E/-W (ft)	Northing (ft)	Easting (ft)	Latitude	Longitude
HARD LINES 114'W (0.00	0.00	7,750.0	610.0	579.7	1,285,389.24	3,248,283.87	40.113374	-104.612267
- plan misses target center by 151.6ft at 7846.0ft MD (7750.0 TVD, 510.0 N, 693.7 E)											
- Polygon											
Point 1					7,750.0	0.0	0.0	1,285,389.24	3,248,283.87		
Point 2					7,750.0	-200.0	0.0	1,285,189.25	3,248,285.87		
TARGET CIRCLE 132			0.00	0.00	6,833.0	510.0	693.7	1,285,290.41	3,248,398.81	40.113100	-104.611860
- plan hits target center											
- Circle (radius 75.0)											
TARGET BHL 1320'F			0.00	0.00	5,200.0	510.0	693.7	1,285,290.41	3,248,398.81	40.113100	-104.611860
- plan hits target center											
- Point											

Casing Points						
Measured Depth (ft)	Vertical Depth (ft)	Name	Casing Diameter (")	Hole Diameter (")		
850.0	850.0	8 5/8"	8-5/8	12-1/4		

Formations						
Measured Depth (ft)	Vertical Depth (ft)	Name	Lithology	Dip (°)	Dip Direction (°)	
6,929.0	6,833.0	NIOBRARA		0.00		
7,251.0	7,155.0	CODELL		0.00		
7,638.0	7,542.0	D-SAND		0.00		
7,696.0	7,600.0	J-SAND		0.00		