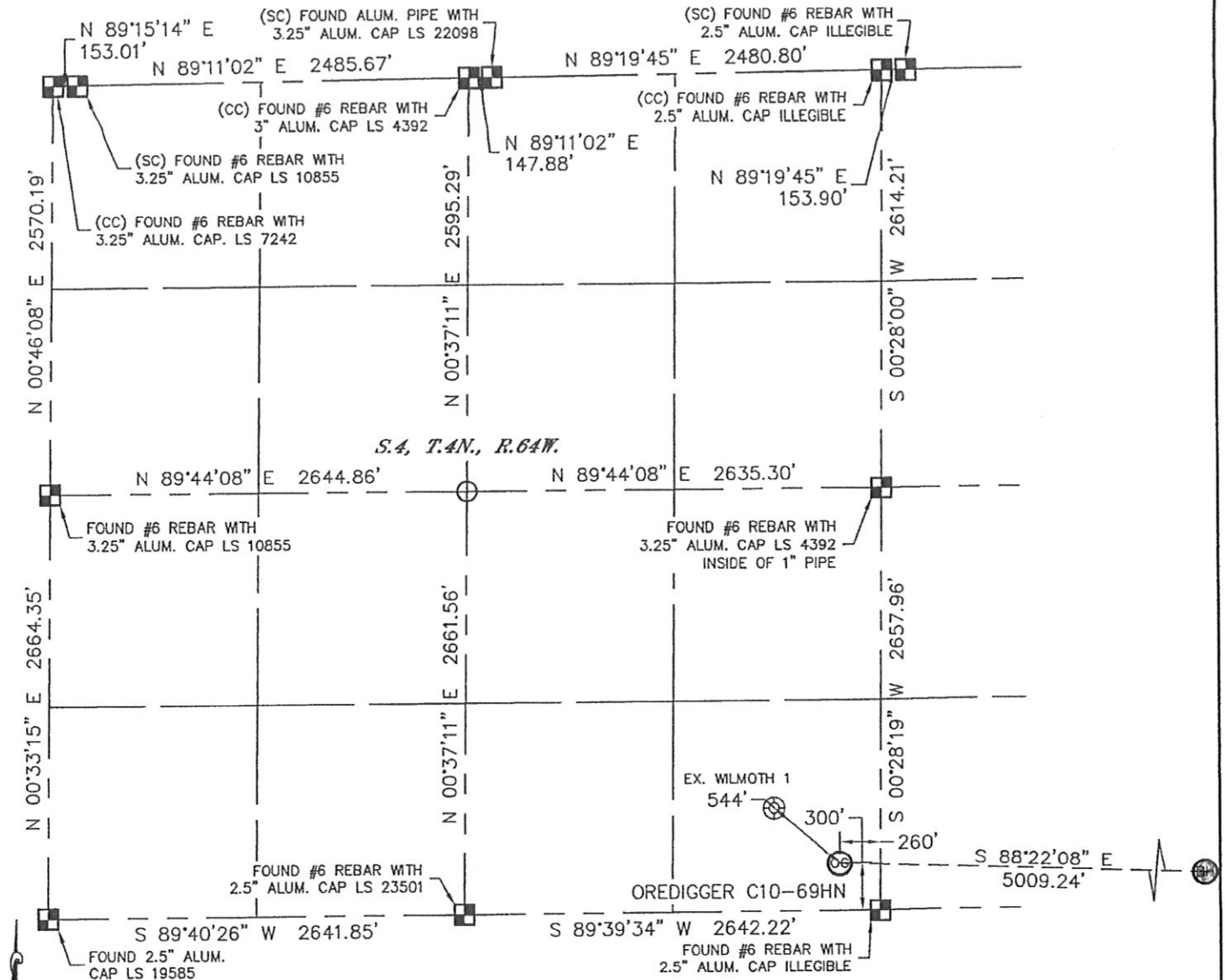


WELL LOCATION CERTIFICATE

THIS MAP DOES NOT REPRESENT A BOUNDARY SURVEY

SECTION: 4
TOWNSHIP: 4N
RANGE: 64W



In accordance with a request from Erik Van Decar with Noble Energy Inc. Lat40°, Inc. has determined the surface location of the OREDIGGER C10-69HN to be 300' from the SOUTH line and 260' from the EAST line as measured at right angles from the section lines of Section 4, Township 4 North, Range 64 West and the bottom hole to be 75' from the SOUTH line and 535' from the EAST line as measured at right angles from the section lines of Section 3, Township 4 North, Range 64 West of the Sixth Principal Meridian, County of Weld, State of Colorado.

I hereby state that this Well Location Certificate was prepared by me, or under my direct supervision, that the fieldwork was completed on 1/27/11, for and on behalf of Noble Energy Inc. That this is not a Land Survey Plat or an Improvement Survey Plat, and that it is not to be relied upon for establishment of fence, building, or other future improvement lines.

NOTE:

- 1) Bearings shown are Grid Bearings of the Colorado State Plane Coordinate System, North Zone, North American Datum 1983/2007. The lineal dimensions as contained herein are based upon the "U.S. Survey Foot."
- 2) Ground elevations are based on an observed GPS elevation (NAVD 1988 DATUM).
- 3) NEAREST EXISTING WELL: WILMOTH 1, 544'
- 4) IMPROVEMENTS: See LOCATION DRAWING for all visible improvements within 400' of disturbed area.
- 5) SURFACE USE: CROP FIELD CORNER (WASTE AREA)
- 6) INSTRUMENT OPERATOR: ADAM KELLY

SURFACE LOCATION
LATITUDE: 40.33491°N
LONGITUDE: 104.54695°W
PDOP: 1.7
ELEV: 4686'
1/4, 1/4: SE1/4SE1/4
NEAREST PROPERTY LINE: 260' EAST

BOTTOM HOLE
LATITUDE: 40.33437°N
LONGITUDE: 104.52900°W

NOTE

According to Colorado law, you must commence any legal action based upon any defect in this W.L.C. within three years after you discover such defect. In no event, may any action based upon any defect in this survey be commenced more than ten years after the date of the certificate shown hereon. (13-80-105 C.R.S.)

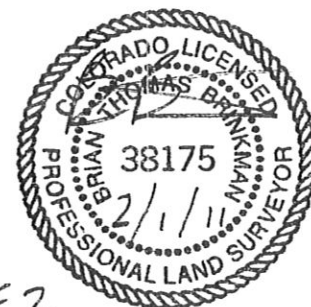
LEGEND

- = ALIQUOT MONUMENT AS DESCRIBED
- = CALCULATED POSITION

SHEET 1 OF 2

Brian T. Brinkman-On Demand Land Survey, Inc.
Colorado Licensed Professional
Land Surveyor No. 38175
PROJECT#: 2011021

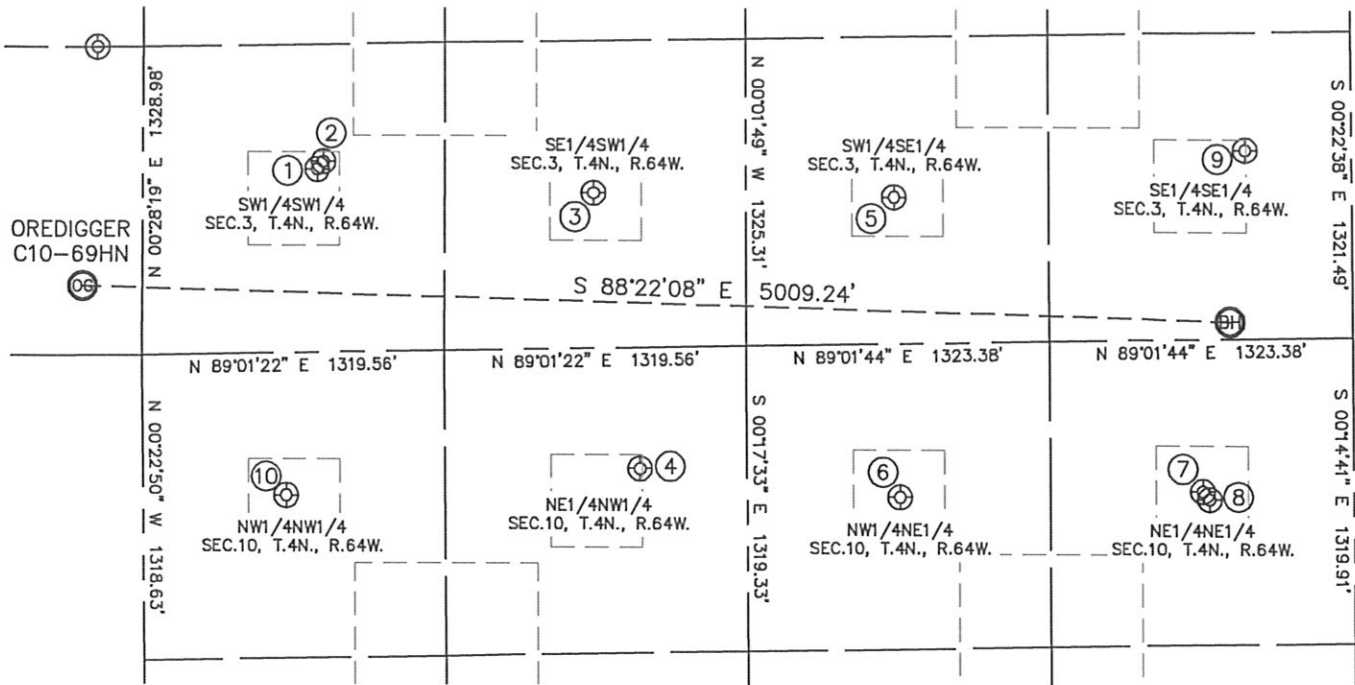




SITE SKETCH

OREDIGGER C10-69HN

SECTION: 4
TOWNSHIP: 4N
RANGE: 64W



①

LOEFFLER C10-30
SW1/4SW1/4
790' FSL
760' FWL
LAT-40.33627N
LONG-104.53425W
PDOP: 1.3
ELEV: 4678'

②

ATKINSON-GALE 3-13
SW1/4SW1/4
822' FSL
787' FWL
LAT-40.33636N
LONG-104.54316W
PDOP: 1.6
ELEV: 4679'

③

MURPHY 1
SE1/4SW1/4
670' FSL
1964' FWL
LAT-40.33596N
LONG-104.53895W
PDOP: 2.1
ELEV: 4668'

④

EMBREE 10-3
NE1/4NW1/4
523' FNL
2169' FWL
LAT-40.33269N
LONG-104.53826W
PDOP: 1.4
ELEV: 4659'

⑤

KISSLER 3-1
SW1/4SE1/4
632' FSL
1996' FEL
LAT-40.33588N
LONG-104.53423W
PDOP: 1.8
ELEV: 4652'

⑥

HOFF 31-10
NW1/4NE1/4
662' FNL
1979' FEL
LAT-40.33233N
LONG-104.53419W
PDOP: 1.5
ELEV: 4648'

⑦

ROSKOP 10-1
NE1/4NE1/4
657' FNL
659' FEL
LAT-40.33236N
LONG-104.52946W
PDOP: 1.1
ELEV: 4630'

⑧

ROSKOP C11-31D
NE1/4NE1/4
691' FNL
629' FEL
LAT-40.33227N
LONG-104.52935W
PDOP: 1.6
ELEV: 4630'

⑨

OSTER 3-1614
SE1/4SE1/4
813' FSL
464' FEL
LAT-40.33640N
LONG-104.52873W
PDOP: 1.0
ELEV: 4631'

⑩

REINICK 1-10-4-64
NW1/4NW1/4
614' FNL
624' FWL
LAT-40.33241N
LONG-104.5381W
PDOP: 1.1
ELEV: 4679'

