

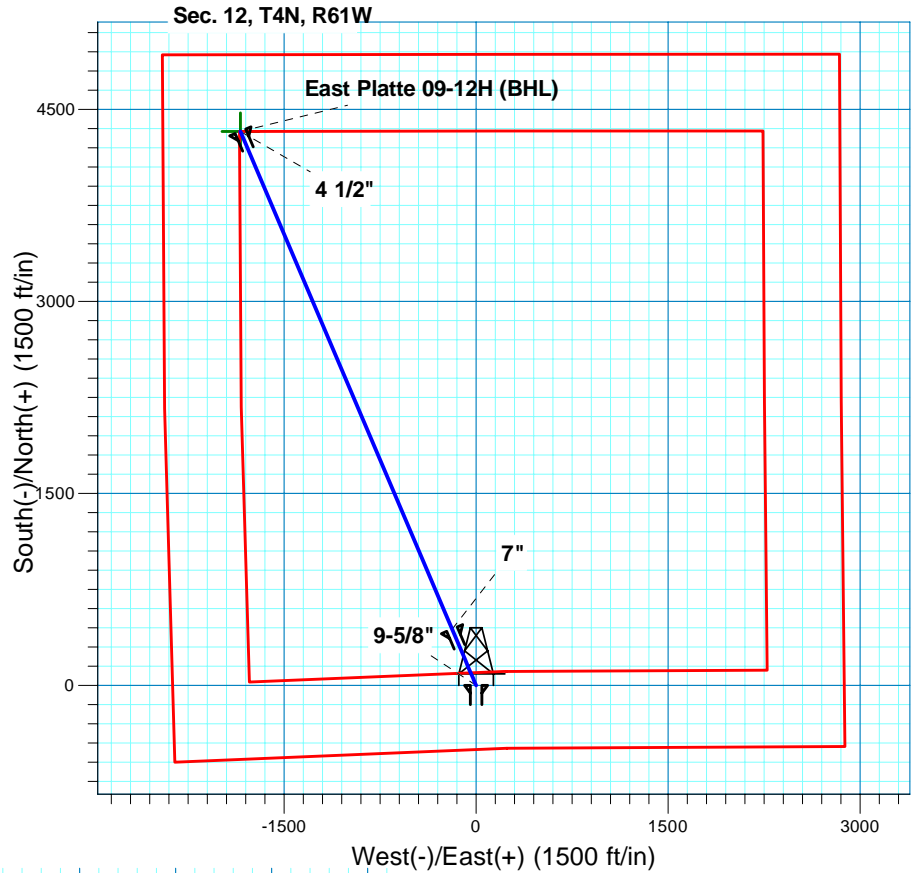
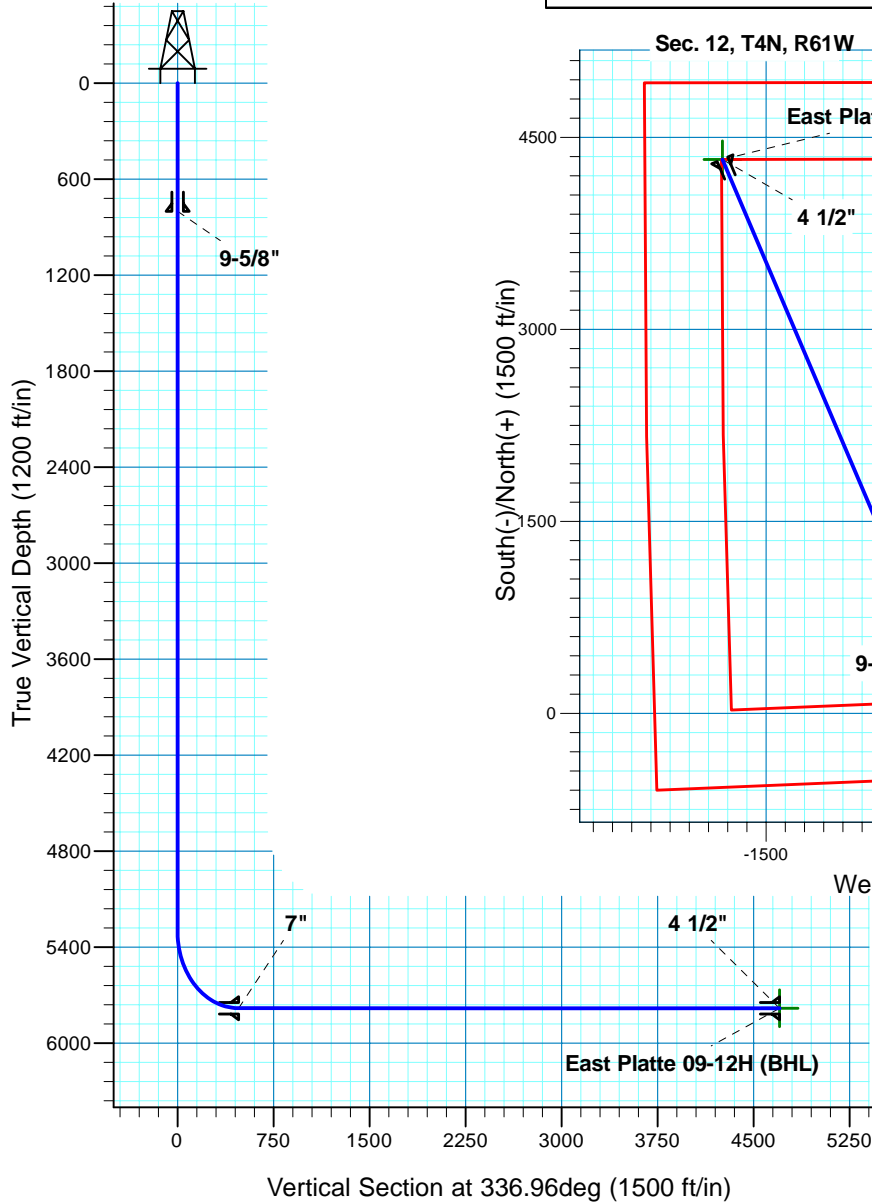
# East Platte 09-12H

## Section 12 T4N R61W

### Weld County, CO

#### Surface Location

NAD 1927 (NADCON CONUS) Colorado North 501  
Ground Elevation: 4460.00 RIG @ 4482.00ft (TBD)  
Northing Easting Latitude Longitude  
362662.07 2373596.38 40° 19' 16.241 N 104° 9' 36.479 W



**T M**  
Azimuths to True North  
Magnetic North: 8.49°  
Magnetic Field  
Strength: 53177.3snT  
Dip Angle: 67.10°  
Date: 6/16/2011  
Model: IGRF200510

Project: DJ - Hereford Ranch  
Site: East Platte 09-12H  
Well: East Platte 09-12H  
Plan: APD Directional Plan

#### SECTION DETAILS

Sec	MD	Inc	Azi	TVD	+N/-S	+E/-W	DLeg	TFace	VSec	Target
1	0.00	0.00	0.00	0.00	0.00	0.00	0.00	0.00	0.00	
2	5303.53	0.00	0.00	5303.53	0.00	0.00	0.00	0.00	0.00	
3	6053.54	90.00	336.96	5781.00	439.37	-186.89	12.00	336.96	477.47	
4	10279.10	90.00	336.96	5781.00	4327.78	-1840.87	0.00	0.00	4703.03	East Platte 09-12H (BHL)

#### TARGET DETAILS

Name	TVD	+N/-S	+E/-W	Northing	Easting	Latitude	Longitude	Shape Point
East Platte 09-12H (BHL)	5781.00	4327.78	-1840.87	366961.54	2371690.33	40° 19' 59.009 N	104° 10' 0.250 W	

# **Denver Division- Colorado**

**DJ - Hereford Ranch**

**East Platte 09-12H**

**East Platte 09-12H**

**Original Wellbore**

**Plan: APD Directional Plan**

## **Standard Planning Report**

**16 June, 2011**

# EOG Resources Inc

## Planning Report

<b>Database:</b>	EDM	<b>Local Co-ordinate Reference:</b>	Site East Platte 09-12H
<b>Company:</b>	Denver Division- Colorado	<b>TVD Reference:</b>	RIG @ 4482.00ft (TBD)
<b>Project:</b>	DJ - Hereford Ranch	<b>MD Reference:</b>	RIG @ 4482.00ft (TBD)
<b>Site:</b>	East Platte 09-12H	<b>North Reference:</b>	True
<b>Well:</b>	East Platte 09-12H	<b>Survey Calculation Method:</b>	Minimum Curvature
<b>Wellbore:</b>	Original Wellbore		
<b>Design:</b>	APD Directional Plan		

<b>Project</b>	DJ - Hereford Ranch, Weld County		
<b>Map System:</b>	US State Plane 1927 (Exact solution)	<b>System Datum:</b>	Mean Sea Level
<b>Geo Datum:</b>	NAD 1927 (NADCON CONUS)		
<b>Map Zone:</b>	Colorado North 501		

Site	East Platte 09-12H				
Site Position:		Northing:	362,662.07 ft	Latitude:	40° 19' 16.241 N
From:	Lat/Long	Easting:	2,373,596.38ft	Longitude:	104° 9' 36.479 W
Position Uncertainty:	0.00 ft	Slot Radius:	"	Grid Convergence:	0.87 deg

Well	East Platte 09-12H					
Well Position	+N-S	0.00 ft	Northing:	362,662.07 ft	Latitude:	40° 19' 16.241 N
	+E-W	0.00 ft	Easting:	2,373,596.38 ft	Longitude:	104° 9' 36.479 W
Position Uncertainty		0.00 ft	Wellhead Elevation:	ft	Ground Level:	4,460.00 ft

<b>Wellbore</b>	Original Wellbore				
<b>Magnetics</b>	<b>Model Name</b>	<b>Sample Date</b>	<b>Declination (deg)</b>	<b>Dip Angle (deg)</b>	<b>Field Strength (nT)</b>
	IGRF200510	6/16/2011	8.49	67.10	53,177

<b>Design</b>	APD Directional Plan				
<b>Audit Notes:</b>					
<b>Version:</b>	<b>Phase:</b>	PROTOTYPE	<b>Tie On Depth:</b>	0.00	
<b>Vertical Section:</b>	<b>Depth From (TVD) (ft)</b>	<b>+N/-S (ft)</b>	<b>+E/-W (ft)</b>	<b>Direction (deg)</b>	
	0.00	0.00	0.00	336.96	

<b>Plan Sections</b>										
Measured Depth (ft)	Inclination (deg)	Azimuth (deg)	Vertical Depth (ft)	+N/-S (ft)	+E/-W (ft)	Dogleg Rate (?/100ft)	Build Rate (?/100ft)	Turn Rate (?/100ft)	TFO (deg)	Target
0.00	0.00	0.00	0.00	0.00	0.00	0.00	0.00	0.00	0.00	
5,303.53	0.00	0.00	5,303.53	0.00	0.00	0.00	0.00	0.00	0.00	
6,053.54	90.00	336.96	5,781.00	439.37	-186.89	12.00	12.00	0.00	336.96	
10,279.10	90.00	336.96	5,781.00	4,327.78	-1,840.87	0.00	0.00	0.00	0.00	East Platte 09-12H

# EOG Resources Inc

## Planning Report

<b>Database:</b>	EDM	<b>Local Co-ordinate Reference:</b>	Site East Platte 09-12H
<b>Company:</b>	Denver Division- Colorado	<b>TVD Reference:</b>	RIG @ 4482.00ft (TBD)
<b>Project:</b>	DJ - Hereford Ranch	<b>MD Reference:</b>	RIG @ 4482.00ft (TBD)
<b>Site:</b>	East Platte 09-12H	<b>North Reference:</b>	True
<b>Well:</b>	East Platte 09-12H	<b>Survey Calculation Method:</b>	Minimum Curvature
<b>Wellbore:</b>	Original Wellbore		
<b>Design:</b>	APD Directional Plan		

Planned Survey									
Measured Depth (ft)	Inclination (deg)	Azimuth (deg)	Vertical Depth (ft)	+N/-S (ft)	+E/-W (ft)	Vertical Section (ft)	Dogleg Rate (?/100ft)	Build Rate (?/100ft)	Turn Rate (?/100ft)
0.00	0.00	0.00	0.00	0.00	0.00	0.00	0.00	0.00	0.00
100.00	0.00	0.00	100.00	0.00	0.00	0.00	0.00	0.00	0.00
200.00	0.00	0.00	200.00	0.00	0.00	0.00	0.00	0.00	0.00
300.00	0.00	0.00	300.00	0.00	0.00	0.00	0.00	0.00	0.00
400.00	0.00	0.00	400.00	0.00	0.00	0.00	0.00	0.00	0.00
500.00	0.00	0.00	500.00	0.00	0.00	0.00	0.00	0.00	0.00
600.00	0.00	0.00	600.00	0.00	0.00	0.00	0.00	0.00	0.00
700.00	0.00	0.00	700.00	0.00	0.00	0.00	0.00	0.00	0.00
800.00	0.00	0.00	800.00	0.00	0.00	0.00	0.00	0.00	0.00
9-5/8"									
900.00	0.00	0.00	900.00	0.00	0.00	0.00	0.00	0.00	0.00
1,000.00	0.00	0.00	1,000.00	0.00	0.00	0.00	0.00	0.00	0.00
1,100.00	0.00	0.00	1,100.00	0.00	0.00	0.00	0.00	0.00	0.00
1,200.00	0.00	0.00	1,200.00	0.00	0.00	0.00	0.00	0.00	0.00
1,300.00	0.00	0.00	1,300.00	0.00	0.00	0.00	0.00	0.00	0.00
1,400.00	0.00	0.00	1,400.00	0.00	0.00	0.00	0.00	0.00	0.00
1,500.00	0.00	0.00	1,500.00	0.00	0.00	0.00	0.00	0.00	0.00
1,600.00	0.00	0.00	1,600.00	0.00	0.00	0.00	0.00	0.00	0.00
1,700.00	0.00	0.00	1,700.00	0.00	0.00	0.00	0.00	0.00	0.00
1,800.00	0.00	0.00	1,800.00	0.00	0.00	0.00	0.00	0.00	0.00
1,900.00	0.00	0.00	1,900.00	0.00	0.00	0.00	0.00	0.00	0.00
2,000.00	0.00	0.00	2,000.00	0.00	0.00	0.00	0.00	0.00	0.00
2,100.00	0.00	0.00	2,100.00	0.00	0.00	0.00	0.00	0.00	0.00
2,200.00	0.00	0.00	2,200.00	0.00	0.00	0.00	0.00	0.00	0.00
2,300.00	0.00	0.00	2,300.00	0.00	0.00	0.00	0.00	0.00	0.00
2,400.00	0.00	0.00	2,400.00	0.00	0.00	0.00	0.00	0.00	0.00
2,500.00	0.00	0.00	2,500.00	0.00	0.00	0.00	0.00	0.00	0.00
2,600.00	0.00	0.00	2,600.00	0.00	0.00	0.00	0.00	0.00	0.00
2,700.00	0.00	0.00	2,700.00	0.00	0.00	0.00	0.00	0.00	0.00
2,800.00	0.00	0.00	2,800.00	0.00	0.00	0.00	0.00	0.00	0.00
2,900.00	0.00	0.00	2,900.00	0.00	0.00	0.00	0.00	0.00	0.00
3,000.00	0.00	0.00	3,000.00	0.00	0.00	0.00	0.00	0.00	0.00
3,100.00	0.00	0.00	3,100.00	0.00	0.00	0.00	0.00	0.00	0.00
3,200.00	0.00	0.00	3,200.00	0.00	0.00	0.00	0.00	0.00	0.00
3,300.00	0.00	0.00	3,300.00	0.00	0.00	0.00	0.00	0.00	0.00
3,400.00	0.00	0.00	3,400.00	0.00	0.00	0.00	0.00	0.00	0.00
3,500.00	0.00	0.00	3,500.00	0.00	0.00	0.00	0.00	0.00	0.00
3,600.00	0.00	0.00	3,600.00	0.00	0.00	0.00	0.00	0.00	0.00
3,700.00	0.00	0.00	3,700.00	0.00	0.00	0.00	0.00	0.00	0.00
3,800.00	0.00	0.00	3,800.00	0.00	0.00	0.00	0.00	0.00	0.00
3,900.00	0.00	0.00	3,900.00	0.00	0.00	0.00	0.00	0.00	0.00
4,000.00	0.00	0.00	4,000.00	0.00	0.00	0.00	0.00	0.00	0.00
4,100.00	0.00	0.00	4,100.00	0.00	0.00	0.00	0.00	0.00	0.00
4,200.00	0.00	0.00	4,200.00	0.00	0.00	0.00	0.00	0.00	0.00
4,300.00	0.00	0.00	4,300.00	0.00	0.00	0.00	0.00	0.00	0.00
4,400.00	0.00	0.00	4,400.00	0.00	0.00	0.00	0.00	0.00	0.00
4,500.00	0.00	0.00	4,500.00	0.00	0.00	0.00	0.00	0.00	0.00
4,600.00	0.00	0.00	4,600.00	0.00	0.00	0.00	0.00	0.00	0.00
4,700.00	0.00	0.00	4,700.00	0.00	0.00	0.00	0.00	0.00	0.00
4,800.00	0.00	0.00	4,800.00	0.00	0.00	0.00	0.00	0.00	0.00
4,900.00	0.00	0.00	4,900.00	0.00	0.00	0.00	0.00	0.00	0.00
5,000.00	0.00	0.00	5,000.00	0.00	0.00	0.00	0.00	0.00	0.00
5,100.00	0.00	0.00	5,100.00	0.00	0.00	0.00	0.00	0.00	0.00
5,200.00	0.00	0.00	5,200.00	0.00	0.00	0.00	0.00	0.00	0.00

# EOG Resources Inc

## Planning Report

<b>Database:</b>	EDM	<b>Local Co-ordinate Reference:</b>	Site East Platte 09-12H
<b>Company:</b>	Denver Division- Colorado	<b>TVD Reference:</b>	RIG @ 4482.00ft (TBD)
<b>Project:</b>	DJ - Hereford Ranch	<b>MD Reference:</b>	RIG @ 4482.00ft (TBD)
<b>Site:</b>	East Platte 09-12H	<b>North Reference:</b>	True
<b>Well:</b>	East Platte 09-12H	<b>Survey Calculation Method:</b>	Minimum Curvature
<b>Wellbore:</b>	Original Wellbore		
<b>Design:</b>	APD Directional Plan		

Planned Survey									
Measured Depth (ft)	Inclination (deg)	Azimuth (deg)	Vertical Depth (ft)	+N/-S (ft)	+E/-W (ft)	Vertical Section (ft)	Dogleg Rate (?/100ft)	Build Rate (?/100ft)	Turn Rate (?/100ft)
5,300.00	0.00	0.00	5,300.00	0.00	0.00	0.00	0.00	0.00	0.00
5,303.53	0.00	0.00	5,303.53	0.00	0.00	0.00	0.00	0.00	0.00
5,400.00	11.58	336.96	5,399.35	8.94	-3.80	9.71	12.00	12.00	0.00
5,500.00	23.58	336.96	5,494.50	36.67	-15.60	39.85	12.00	12.00	0.00
5,600.00	35.58	336.96	5,581.31	82.01	-34.88	89.12	12.00	12.00	0.00
5,700.00	47.58	336.96	5,655.99	142.96	-60.81	155.36	12.00	12.00	0.00
5,800.00	59.58	336.96	5,715.25	216.87	-92.25	235.68	12.00	12.00	0.00
5,900.00	71.58	336.96	5,756.53	300.51	-127.82	326.56	12.00	12.00	0.00
6,000.00	83.58	336.96	5,778.00	390.21	-165.98	424.04	12.00	12.00	0.00
6,053.54	90.00	336.96	5,781.00	439.37	-186.89	477.47	12.00	12.00	0.00
7"									
6,100.00	90.00	336.96	5,781.00	482.13	-205.08	523.93	0.00	0.00	0.00
6,200.00	90.00	336.96	5,781.00	574.15	-244.22	623.93	0.00	0.00	0.00
6,300.00	90.00	336.96	5,781.00	666.17	-283.36	723.93	0.00	0.00	0.00
6,400.00	90.00	336.96	5,781.00	758.19	-322.50	823.93	0.00	0.00	0.00
6,500.00	90.00	336.96	5,781.00	850.21	-361.65	923.93	0.00	0.00	0.00
6,600.00	90.00	336.96	5,781.00	942.23	-400.79	1,023.93	0.00	0.00	0.00
6,700.00	90.00	336.96	5,781.00	1,034.25	-439.93	1,123.93	0.00	0.00	0.00
6,800.00	90.00	336.96	5,781.00	1,126.27	-479.07	1,223.93	0.00	0.00	0.00
6,900.00	90.00	336.96	5,781.00	1,218.30	-518.22	1,323.93	0.00	0.00	0.00
7,000.00	90.00	336.96	5,781.00	1,310.32	-557.36	1,423.93	0.00	0.00	0.00
7,100.00	90.00	336.96	5,781.00	1,402.34	-596.50	1,523.93	0.00	0.00	0.00
7,200.00	90.00	336.96	5,781.00	1,494.36	-635.64	1,623.93	0.00	0.00	0.00
7,300.00	90.00	336.96	5,781.00	1,586.38	-674.78	1,723.93	0.00	0.00	0.00
7,400.00	90.00	336.96	5,781.00	1,678.40	-713.93	1,823.93	0.00	0.00	0.00
7,500.00	90.00	336.96	5,781.00	1,770.42	-753.07	1,923.93	0.00	0.00	0.00
7,600.00	90.00	336.96	5,781.00	1,862.44	-792.21	2,023.93	0.00	0.00	0.00
7,700.00	90.00	336.96	5,781.00	1,954.46	-831.35	2,123.93	0.00	0.00	0.00
7,800.00	90.00	336.96	5,781.00	2,046.49	-870.50	2,223.93	0.00	0.00	0.00
7,900.00	90.00	336.96	5,781.00	2,138.51	-909.64	2,323.93	0.00	0.00	0.00
8,000.00	90.00	336.96	5,781.00	2,230.53	-948.78	2,423.93	0.00	0.00	0.00
8,100.00	90.00	336.96	5,781.00	2,322.55	-987.92	2,523.93	0.00	0.00	0.00
8,200.00	90.00	336.96	5,781.00	2,414.57	-1,027.06	2,623.93	0.00	0.00	0.00
8,300.00	90.00	336.96	5,781.00	2,506.59	-1,066.21	2,723.93	0.00	0.00	0.00
8,400.00	90.00	336.96	5,781.00	2,598.61	-1,105.35	2,823.93	0.00	0.00	0.00
8,500.00	90.00	336.96	5,781.00	2,690.63	-1,144.49	2,923.93	0.00	0.00	0.00
8,600.00	90.00	336.96	5,781.00	2,782.65	-1,183.63	3,023.93	0.00	0.00	0.00
8,700.00	90.00	336.96	5,781.00	2,874.68	-1,222.78	3,123.93	0.00	0.00	0.00
8,800.00	90.00	336.96	5,781.00	2,966.70	-1,261.92	3,223.93	0.00	0.00	0.00
8,900.00	90.00	336.96	5,781.00	3,058.72	-1,301.06	3,323.93	0.00	0.00	0.00
9,000.00	90.00	336.96	5,781.00	3,150.74	-1,340.20	3,423.93	0.00	0.00	0.00
9,100.00	90.00	336.96	5,781.00	3,242.76	-1,379.34	3,523.93	0.00	0.00	0.00
9,200.00	90.00	336.96	5,781.00	3,334.78	-1,418.49	3,623.93	0.00	0.00	0.00
9,300.00	90.00	336.96	5,781.00	3,426.80	-1,457.63	3,723.93	0.00	0.00	0.00
9,400.00	90.00	336.96	5,781.00	3,518.82	-1,496.77	3,823.93	0.00	0.00	0.00
9,500.00	90.00	336.96	5,781.00	3,610.84	-1,535.91	3,923.93	0.00	0.00	0.00
9,600.00	90.00	336.96	5,781.00	3,702.87	-1,575.06	4,023.93	0.00	0.00	0.00
9,700.00	90.00	336.96	5,781.00	3,794.89	-1,614.20	4,123.93	0.00	0.00	0.00
9,800.00	90.00	336.96	5,781.00	3,886.91	-1,653.34	4,223.93	0.00	0.00	0.00
9,900.00	90.00	336.96	5,781.00	3,978.93	-1,692.48	4,323.93	0.00	0.00	0.00
10,000.00	90.00	336.96	5,781.00	4,070.95	-1,731.62	4,423.93	0.00	0.00	0.00
10,100.00	90.00	336.96	5,781.00	4,162.97	-1,770.77	4,523.93	0.00	0.00	0.00
10,200.00	90.00	336.96	5,781.00	4,254.99	-1,809.91	4,623.93	0.00	0.00	0.00

# EOG Resources Inc

## Planning Report

<b>Database:</b>	EDM	<b>Local Co-ordinate Reference:</b>	Site East Platte 09-12H
<b>Company:</b>	Denver Division- Colorado	<b>TVD Reference:</b>	RIG @ 4482.00ft (TBD)
<b>Project:</b>	DJ - Hereford Ranch	<b>MD Reference:</b>	RIG @ 4482.00ft (TBD)
<b>Site:</b>	East Platte 09-12H	<b>North Reference:</b>	True
<b>Well:</b>	East Platte 09-12H	<b>Survey Calculation Method:</b>	Minimum Curvature
<b>Wellbore:</b>	Original Wellbore		
<b>Design:</b>	APD Directional Plan		

Planned Survey									
Measured Depth (ft)	Inclination (deg)	Azimuth (deg)	Vertical Depth (ft)	+N/-S (ft)	+E/-W (ft)	Vertical Section (ft)	Dogleg Rate (?/100ft)	Build Rate (?/100ft)	Turn Rate (?/100ft)
10,279.10	90.00	336.96	5,781.00	4,327.78	-1,840.87	4,703.03	0.00	0.00	0.00
4 1/2" - East Platte 09-12H (BHL)									

Design Targets									
Target Name	Dip Angle (deg)	Dip Dir. (deg)	TVD (ft)	+N/-S (ft)	+E/-W (ft)	Northing (ft)	Easting (ft)	Latitude	Longitude
- hit/miss target									
- Shape									
East Platte 09-12H (B	0.00	0.00	5,781.00	4,327.78	-1,840.87	366,961.54	2,371,690.33	40° 19' 59.009 N	104° 10' 0.250 W
- plan hits target center									
- Point									

Casing Points					
Measured Depth (ft)	Vertical Depth (ft)	Name	Casing Diameter (")	Hole Diameter (")	
800.00	800.00	9-5/8"	9-5/8	13-1/2	
6,053.54	5,781.00	7"	7	8-3/4	
10,279.10	5,781.00	4 1/2"	4-1/2	6	