

1949 Brass Cap,
Fence Post
PLS 7735
Lat: 40.334686°
Long: 104.169406°

T4N, R61W, 6th P.M.

EOG RESOURCES, INC.

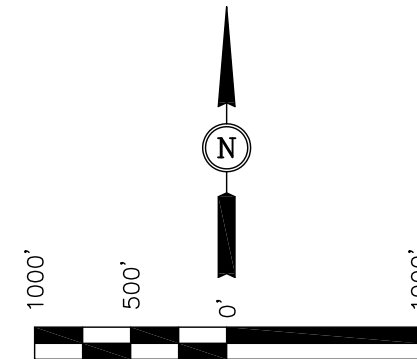
Well location, EAST PLATTE #09-12H, located as shown in the SE 1/4 SW 1/4 of Section 12, T4N, R61W, 6th P.M., Weld County, Colorado.

BASIS OF ELEVATION

SPOT ELEVATION LOCATED AT THE NORTHEAST CORNER OF SECTION 24, T5N, R62W, 6th P.M. TAKEN FROM THE POINT OF ROCKS, QUADRANGLE, COLORADO, WELD COUNTY, 7.5 MINUTE QUAD (TOPOGRAPHIC MAP) PUBLISHED BY THE UNITED STATES DEPARTMENT OF THE INTERIOR, GEOLOGICAL SURVEY. SAID ELEVATION IS MARKED AS BEING 4530 FEET.

BASIS OF BEARINGS

BASIS OF BEARINGS IS A G.P.S. OBSERVATION.



SCALE

CERTIFICATE

THIS IS TO CERTIFY THAT THE ABOVE PLAT WAS PREPARED FROM FIELD NOTES OF ACTUAL SURVEYS MADE BY ME OR UNDER MY SUPERVISION AND THAT THE SAME ARE TRUE AND CORRECT TO THE BEST OF MY KNOWLEDGE AND BELIEF.

REGISTERED LAND SURVEYOR
REGISTRATION NO. 17492
STATE OF COLORADO

UINTAH ENGINEERING & LAND SURVEYING

85 SOUTH 200 EAST - VERNAL, UTAH 84078

(435) 789-1017

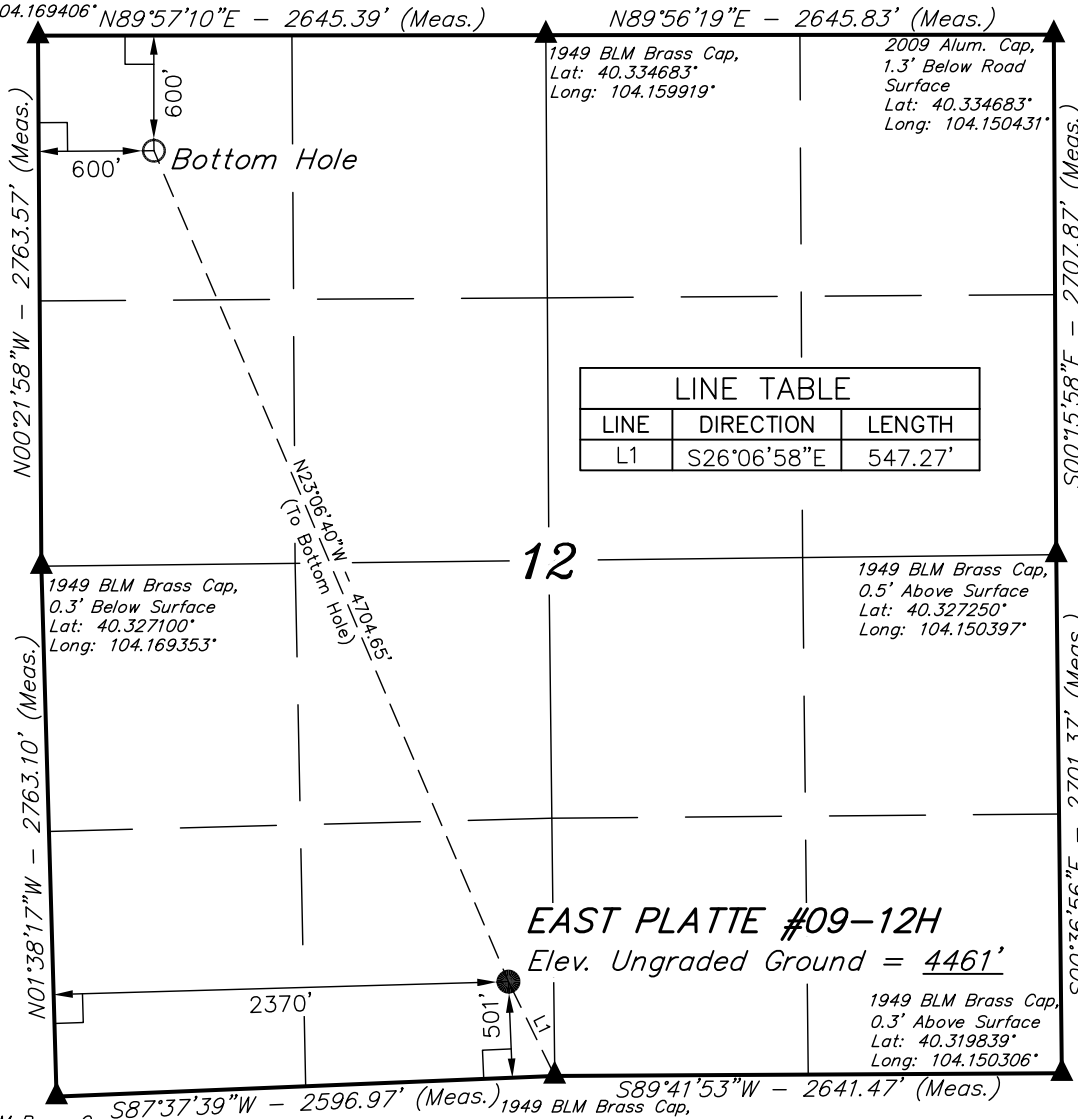
SCALE 1" = 1000'	DATE SURVEYED: 04-26-11	DATE DRAWN: 05-03-11
PARTY D.N. A.G. J.J.	REFERENCES G.L.O. PLAT	
WEATHER COOL	FILE EOG RESOURCES, INC.	

PDOP = 1.3

LEGEND:

- └─┘ = 90° SYMBOL
● = PROPOSED WELL HEAD.
▲ = SECTION CORNERS LOCATED.

NAD 83 (TARGET BOTTOM HOLE)	NAD 83 (SURFACE LOCATION)
LATITUDE = 40°19'58.94" (40.333039)	LATITUDE = 40°19'16.17" (40.321158)
LONGITUDE = 104°10'02.07" (104.167242)	LONGITUDE = 104°09'38.30" (104.160639)
NAD 27 (TARGET BOTTOM HOLE)	NAD 27 (SURFACE LOCATION)
LATITUDE = 40°19'59.01" (40.333058)	LATITUDE = 40°19'16.24" (40.321178)
LONGITUDE = 104°10'00.25" (104.166736)	LONGITUDE = 104°09'36.48" (104.160133)
STATE PLANE NAD 83	STATE PLANE NAD 83
N: 1366958.96 E: 3371539.64	N: 1362659.20 E: 3373445.56
STATE PLANE NAD 27	STATE PLANE NAD 27
N: 366961.22 E: 2371690.41	N: 362661.61 E: 2373596.40



LINE TABLE

LINE	DIRECTION	LENGTH
L1	S26°06'58"E	547.27'