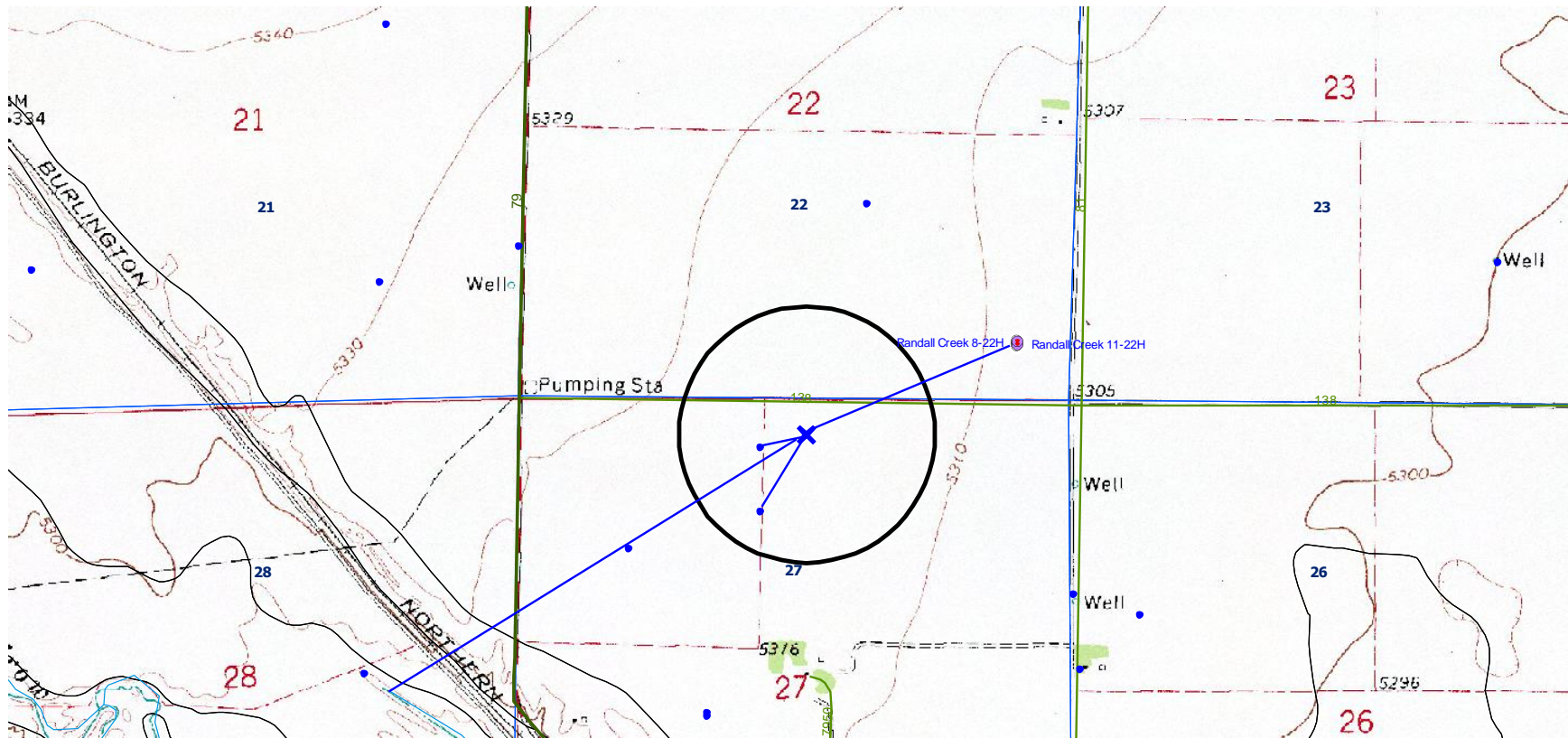


Randall Creek 13-27H Hydrology Map (1000' buffer from edge of well pad)



Closest water well per COGCC GIS and survey plat (permit #6900-F) at 427' from proposed location has no static water data available. Water well data obtained from water well (permit # 6901-F)  $\pm$  690' from proposed location. Closest surface water is  $\pm$  4510' from location.