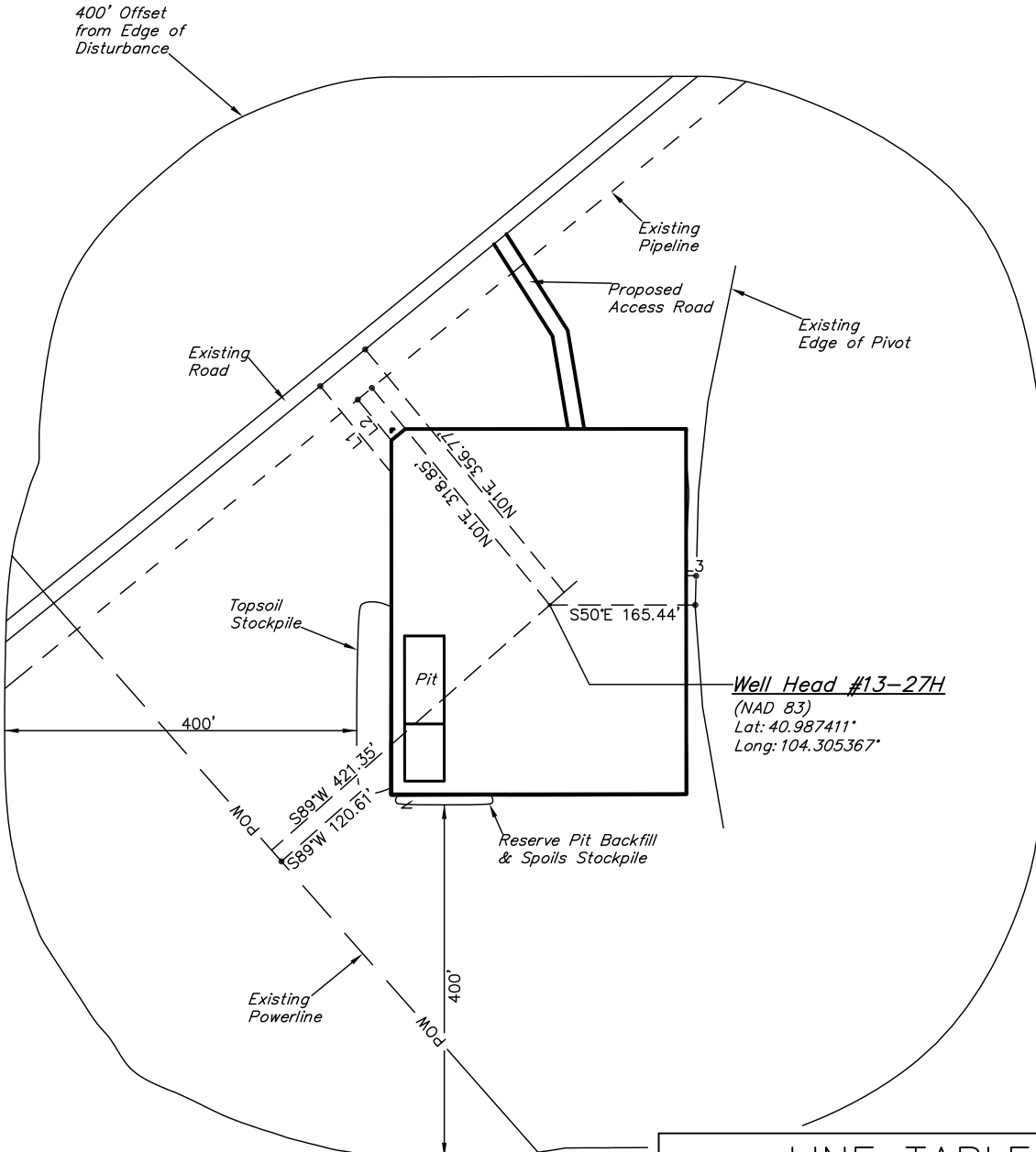
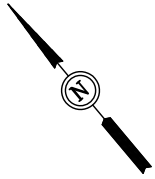


EOG RESOURCES, INC.
 ADDENDUM TO LEGAL PLAT FOR
 RANDALL CREEK #13-27H
 SECTION 27, T12N, R62W, 6th P.M.
 364' FNL 2465' FEL

SCALE: 1" = 200'
 DATE: 05-06-11
 DRAWN BY: J.J.



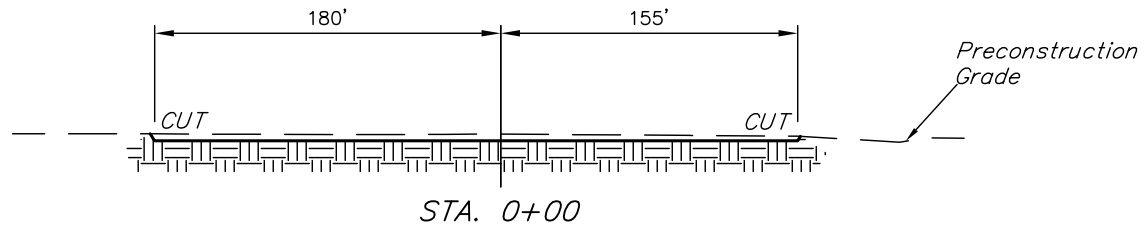
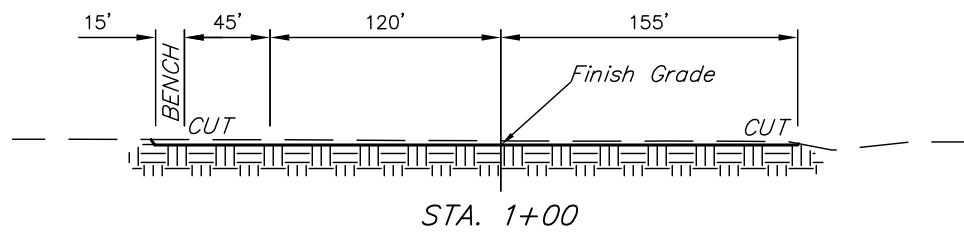
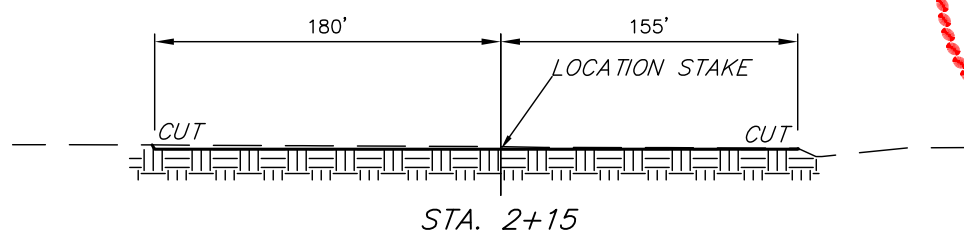
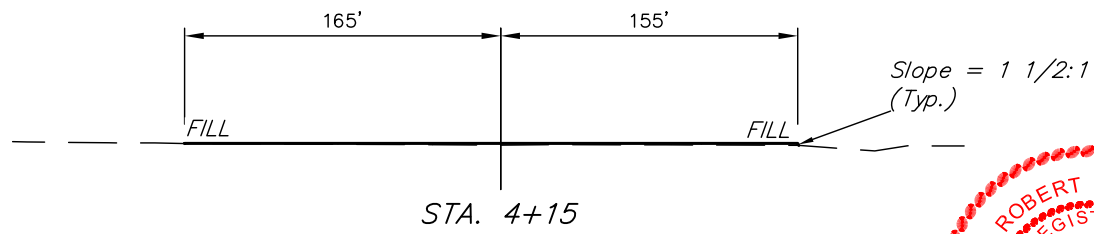
LINE TABLE		
LINE	DIRECTION	LENGTH
L1	N00°42'35"E	126.87'
L2	N00°40'14"E	59.90'
L3	S48°27'42"E	10.18'

EOG RESOURCES, INC.

FIGURE #2

CONSTRUCTION LAYOUT CROSS SECTIONS FOR
 RANDALL CREEK #13-27H
 SECTION 27, T12N, R62W, 6th P.M.
 364' FNL 2465' FEL

X-Section Scale
 1" = 40'
 1" = 100'
 DATE: 05-06-11
 DRAWN BY: J.J.



NOTE:

Topsoil should not be Stripped Below Finished Grade on Substructure Area.

APPROXIMATE ACREAGES
 WELL SITE DISTURBANCE = ± 3.907 ACRES
 ACCESS ROAD DISTURBANCE = ± 0.162 ACRES
 TOTAL = ± 4.069 ACRES

* NOTE:
 FILL QUANTITY INCLUDES 5% FOR COMPACTION

APPROXIMATE YARDAGES

(6") Topsoil Stripping	=	2,630 Cu. Yds.
Remaining Location	=	1,770 Cu. Yds.
TOTAL CUT	=	4,400 CU.YDS.
FILL	=	1,420 CU.YDS.

EXCESS MATERIAL	=	2,980 Cu. Yds.
Topsoil & Pit Backfill (1/2 Pit Vol.)	=	2,980 Cu. Yds.
EXCESS UNBALANCE (After Interim Rehabilitation)	=	0 Cu. Yds.

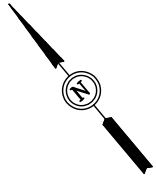
UINTAH ENGINEERING & LAND SURVEYING
 85 So. 200 East * Vernal, Utah 84078 * (435) 789-1017

EOG RESOURCES, INC.

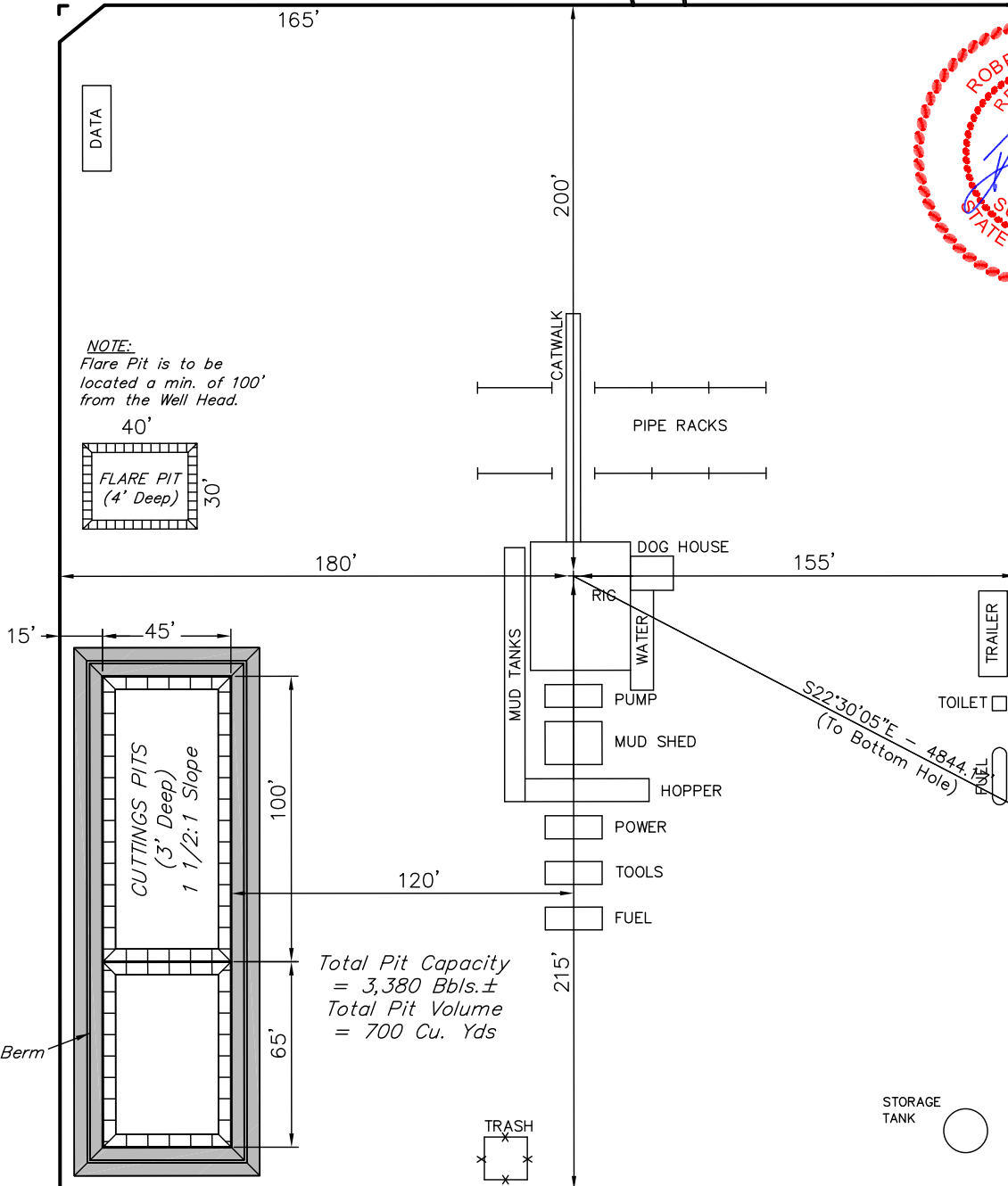
TYPICAL RIG LAYOUT FOR
RANDALL CREEK #13-27H
SECTION 27, T12N, R62W, 6th P.M.
364' FNL 2465' FEL

FIGURE #3

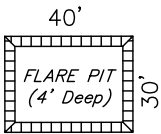
SCALE: 1" = 60'
DATE: 05-06-11
DRAWN BY: J.J.



Proposed
Access Road



NOTE:
Flare Pit is to be
located a min. of 100'
from the Well Head.



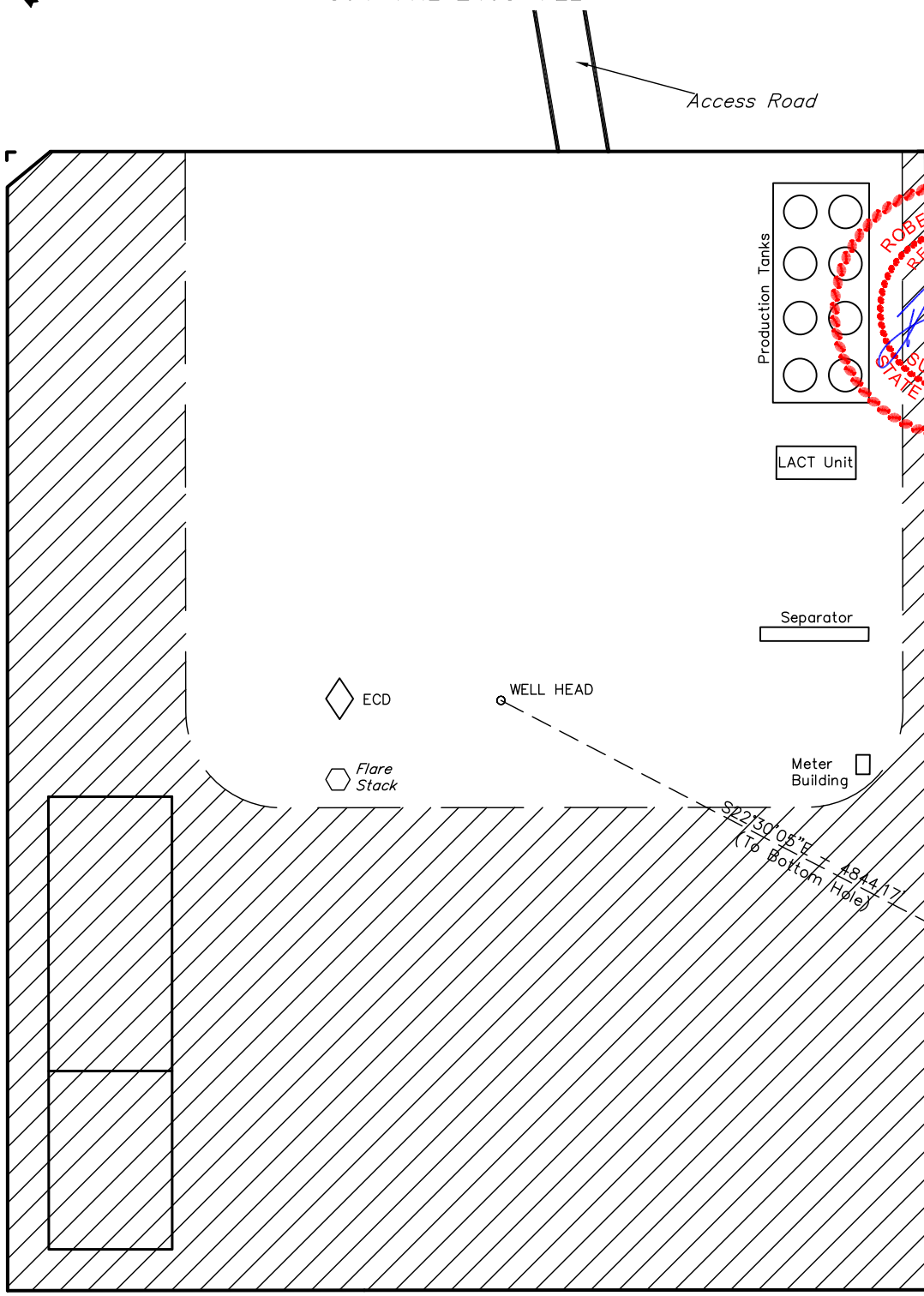
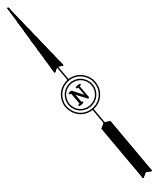
CUTTINGS PITS
(3' Deep)
1 1/2:1 Slope

Total Pit Capacity
= 3,380 Bbls.±
Total Pit Volume
= 700 Cu. Yds

S22°30'05"E - 484.15'
(To Bottom Hole)

EOG RESOURCES, INC.
 RECLAMATION DIAGRAM FOR
 RANDALL CREEK #13-27H
 SECTION 27, T12N, R62W, 6th P.M.
 364' FNL 2465' FEL

FIGURE #4
 SCALE: 1" = 60'
 DATE: 05-06-11
 DRAWN BY: J.J.



APPROXIMATE ACREAGES
 UN-RECLAIMED = ± 1.423 ACRES

 RECLAIMED AREA

