

Location Drawing

Building 3551' southwest
 Public Road 615' south
 Property Line 64' south
 Above Ground Utility 4056' southwest
 Railroad 30,119' northwest

Existing Well Data:
 Aristocrat Angus 24-4
 Latitude: N 40.24911'
 Longitude: W 104.67065'
 FSL: 726'
 FWL: 1969'
 ELEV: 4821'
 PDOP: 2.2

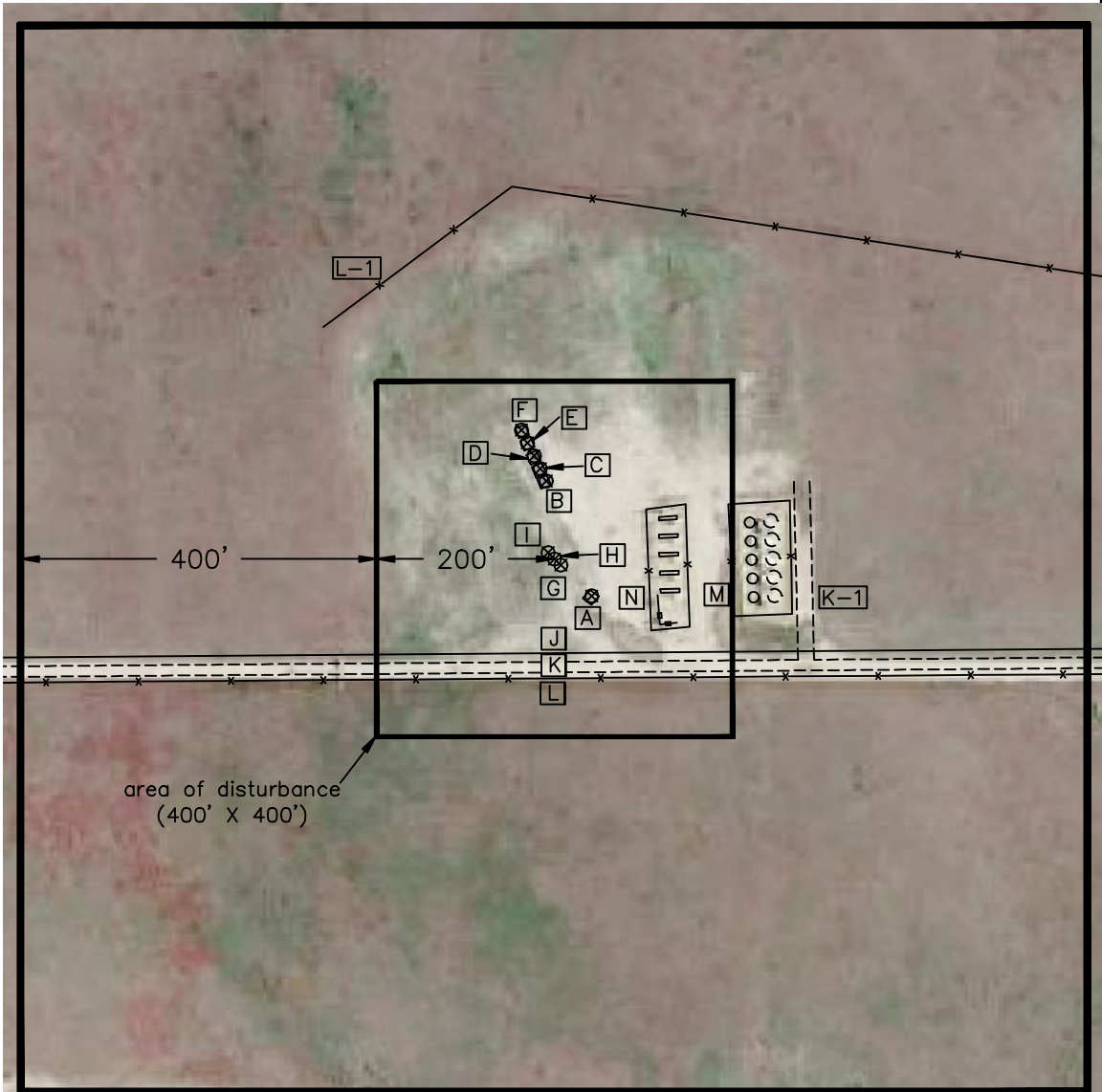
Existing Well Data:
 Aristocrat Angus 2-7-4
 Latitude: N 40.24947'
 Longitude: W 104.67083'
 FSL: 856'
 FWL: 1920'
 ELEV: 4822'
 PDOP: 2.1

Existing Well Data:
 Aristocrat Angus 1-6-4
 Latitude: N 40.24951'
 Longitude: W 104.67085'
 FSL: 870'
 FWL: 1913'
 ELEV: 4822'
 PDOP: 1.7

Existing Well Data:
 Aristocrat Angus 2-4C
 Latitude: N 40.24955'
 Longitude: W 104.67088'
 FSL: 884'
 FWL: 1906'
 ELEV: 4822'
 PDOP: 2.6

Existing Well Data:
 Aristocrat Angus 3-6-4
 Latitude: N 40.24959'
 Longitude: W 104.67090'
 FSL: 899'
 FWL: 1899'
 ELEV: 4822'
 PDOP: 2.3

Existing Well Data:
 Aristocrat Angus 2-5-4
 Latitude: N 40.24963'
 Longitude: W 104.67093'
 FSL: 913'
 FWL: 1892'
 ELEV: 4822'
 PDOP: 2.8



area of disturbance
 (400' X 400')

**Distances listed below
 are measured from the existing
 Aristocrat Angus 24-4**

- [A] existing Aristocrat Angus 24-4
- [B] existing Aristocrat Angus 2-7-4 139' northwest
- [C] existing Aristocrat Angus 1-6-4 155' northwest
- [D] existing Aristocrat Angus 2-4C 170' northwest
- [E] existing Aristocrat Angus 3-6-4 187' northwest
- [F] existing Aristocrat Angus 2-5-4 203' northwest
- [G] proposed Aristocrat Angus 4-8-4 49' northwest
- [H] proposed Aristocrat Angus 4-4 59' northwest
- [I] proposed Aristocrat Angus 4-6-4 69' northwest
- [J] property line 64' south
- [K] gravel drive 80' south
- [K-1] gravel drive 240' east
- [L] fence line 92' south
- [L-1] fence line 423' northwest
- [M] tanks 180' east
- [N] above ground gas/meter house/separators 75' east

Field observations
 taken on 10/4/10 by
 operator Tom Winans.



**Aristocrat Angus
 Pad Location Drawing**

**Improvements extending
 400' from disturbance**

Township 3 North, Range 65 West,
 Section 4: SE $\frac{1}{4}$ SW $\frac{1}{4}$
 Weld County, Colorado

Scale: 1"=200' February 2, 2010

PLS Group, LLC
 220 East Mulberry Street, Fort Collins, Colorado 80524
 (970) 227-1312 - Fax (970) 282-3867