



Bill Barrett Corporation

Bill Barrett Corp.

Garfield County, Colorado [NAD83]

MDP 25 Pad

Federal 33D-33-691

Wellbore #1

Plan: plan1 06may11 rbw

Standard Planning Report

13 May, 2011



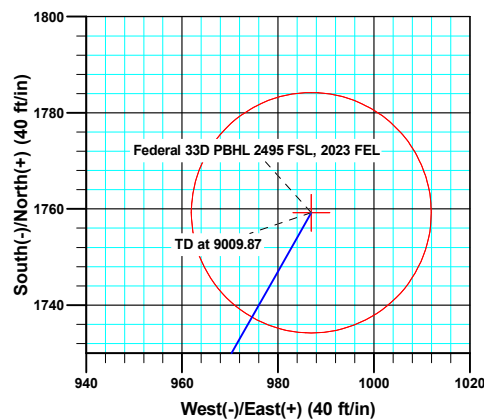
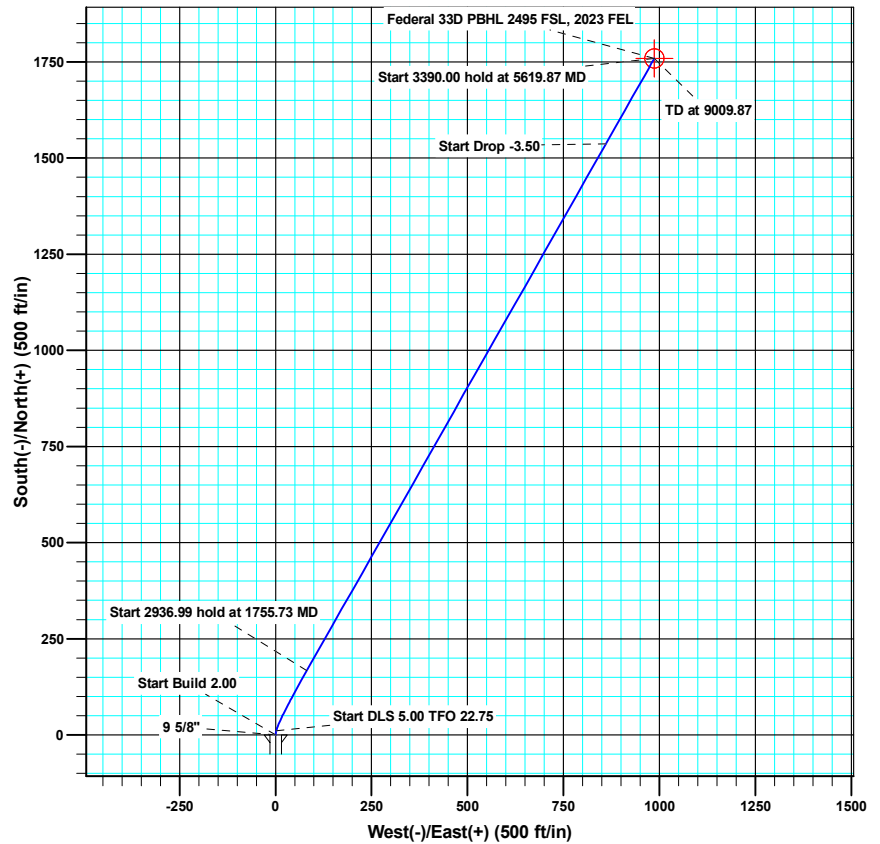
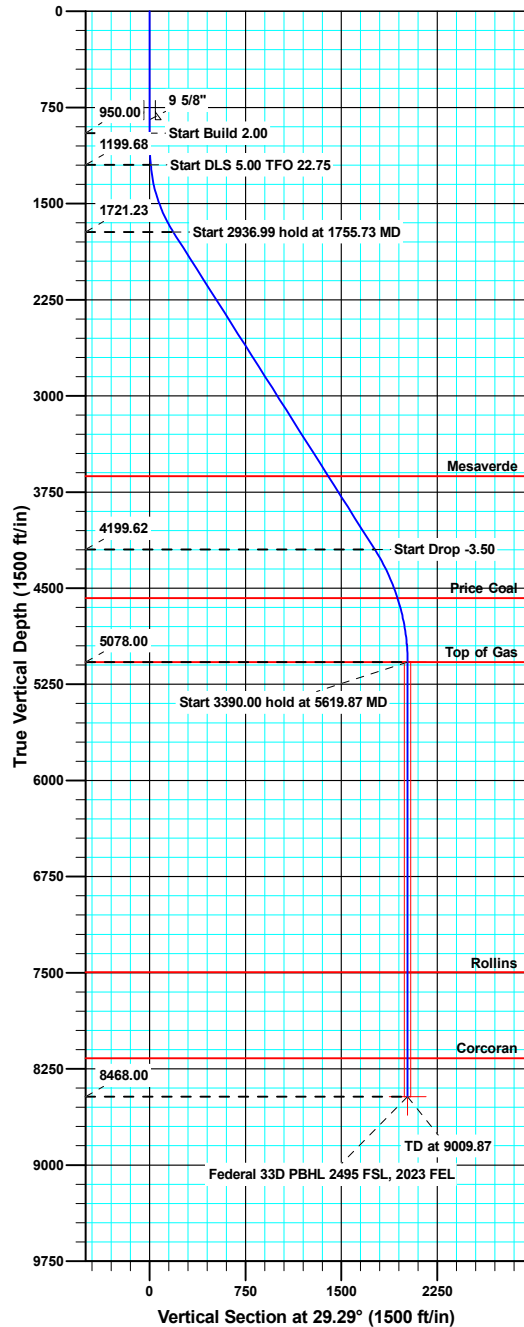


WELL DETAILS: Federal 33D-33-691

North American Datum 1983 , US State Plane 1983 , Colorado Central Zone

Ground Level: 6595.00

+N/-S +E/-W Northing Easting Latitude Longitude
0.00 0.00 1606017.63 2418632.82 39° 28' 45.11 N 107° 33' 35.30 W



Azimuths to True North
Magnetic North: 10.17°

Magnetic Field
Strength: 52303.9snT
Dip Angle: 65.81°
Date: 05/06/2011
Model: IGRF2010

SECTION DETAILS

MD	Inc	Azi	TVD	+N/-S	+E/-W	Dleg	TFace	VSect	Target
0.00	0.000	0.00	0.00	0.00	0.00	0.00	0.00	0.00	
950.00	0.000	0.00	950.00	0.00	0.00	0.00	0.00	0.00	
1200.00	5.000	10.00	1199.68	10.74	1.89	2.00	10.00	10.29	
1755.73	32.450	29.63	1721.23	167.26	81.38	5.00	22.75	185.69	
4692.72	32.450	29.63	4199.62	1537.05	860.57	0.00	0.00	1761.56	
5619.87	0.000	0.00	5078.00	1759.23	986.95	3.50	180.00	2017.17	Federal 33D Target
9009.87	0.000	0.00	8468.00	1759.23	986.95	0.00	0.00	2017.17	Federal 33D PBHL 2495 FSL, 2023 FEL

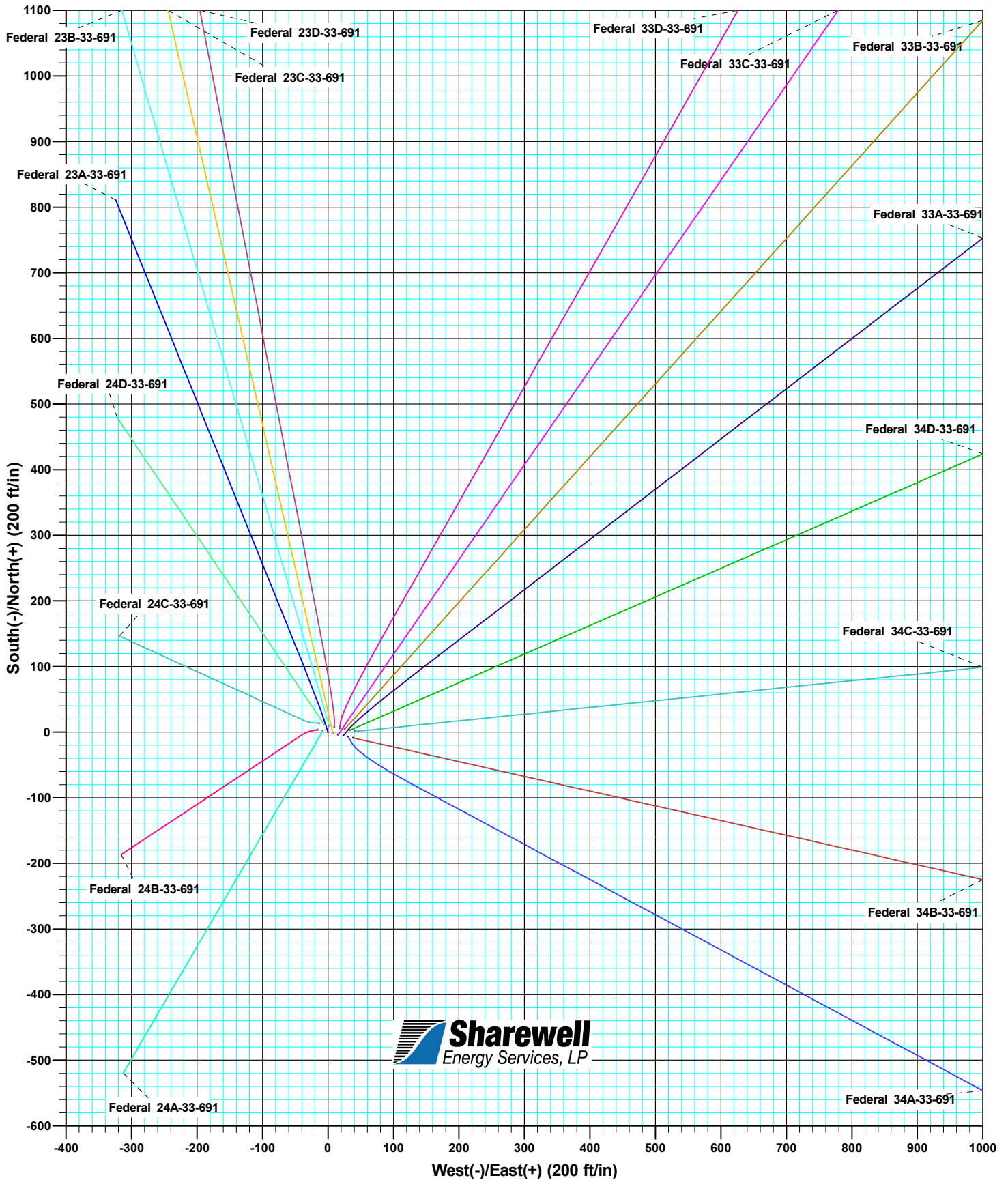
WELL DETAILS: MDP 25 Pad

Ground Level: 6595.00



Bill Barrett Corporation

North American Datum 1983		US State Plane 1983		Colorado Central Zone	
+N/-S	+E/-W	Northing	Easting	Latitude	Longitude
0.00	0.00	1606011.85	2418614.90	39° 28' 45.05 N	107° 33' 35.53 W



Sharewell
Energy Services, LP

Database:	Compass VM	Local Co-ordinate Reference:	Well Federal 33D-33-691
Company:	Bill Barrett Corp.	TVD Reference:	KB @ 6618.00ft
Project:	Garfield County, Colorado [NAD83]	MD Reference:	KB @ 6618.00ft
Site:	MDP 25 Pad	North Reference:	True
Well:	Federal 33D-33-691	Survey Calculation Method:	Minimum Curvature
Wellbore:	Wellbore #1		
Design:	plan1 06may11 rbw		

Project	Garfield County, Colorado [NAD83]		
Map System:	US State Plane 1983	System Datum:	Mean Sea Level
Geo Datum:	North American Datum 1983		
Map Zone:	Colorado Central Zone		

Site	MDP 25 Pad				
Site Position:		Northing:	1,606,013.85 usft	Latitude:	39° 28' 45.07 N
From:	Lat/Long	Easting:	2,418,607.05 usft	Longitude:	107° 33' 35.63 W
Position Uncertainty:	0.00 ft	Slot Radius:	1.10 ft	Grid Convergence:	-1.30 °

Well	Federal 33D-33-691					
Well Position	+N/-S	4.36 ft	Northing:	1,606,017.63 usft	Latitude:	39° 28' 45.11 N
	+E/-W	25.69 ft	Easting:	2,418,632.83 usft	Longitude:	107° 33' 35.30 W
Position Uncertainty		0.00 ft	Wellhead Elevation:		Ground Level:	6,595.00 ft

Wellbore	Wellbore #1				
Magnetics	Model Name	Sample Date	Declination (°)	Dip Angle (°)	Field Strength (nT)
	IGRF2010	05/06/11	10.17	65.81	52,304

Design	plan1 06may11 rbw			
Audit Notes:				
Version:	Phase:	PROTOTYPE	Tie On Depth:	0.00
Vertical Section:	Depth From (TVD) (ft)	+N/-S (ft)	+E/-W (ft)	Direction (°)
	0.00	0.00	0.00	29.29

Plan Sections										
Measured Depth (ft)	Inclination (°)	Azimuth (°)	Vertical Depth (ft)	+N/-S (ft)	+E/-W (ft)	Dogleg Rate (°/100ft)	Build Rate (°/100ft)	Turn Rate (°/100ft)	TFO (°)	Target
0.00	0.000	0.00	0.00	0.00	0.00	0.00	0.00	0.00	0.00	
950.00	0.000	0.00	950.00	0.00	0.00	0.00	0.00	0.00	0.00	
1,200.00	5.000	10.00	1,199.68	10.74	1.89	2.00	2.00	0.00	10.00	
1,755.73	32.450	29.63	1,721.23	167.26	81.38	5.00	4.94	3.53	22.75	
4,692.72	32.450	29.63	4,199.62	1,537.05	860.57	0.00	0.00	0.00	0.00	
5,619.87	0.000	0.00	5,078.00	1,759.23	986.95	3.50	-3.50	0.00	180.00	Federal 33D Target
9,009.87	0.000	0.00	8,468.00	1,759.23	986.95	0.00	0.00	0.00	0.00	Federal 33D PBHL 24

Database:	Compass VM	Local Co-ordinate Reference:	Well Federal 33D-33-691
Company:	Bill Barrett Corp.	TVD Reference:	KB @ 6618.00ft
Project:	Garfield County, Colorado [NAD83]	MD Reference:	KB @ 6618.00ft
Site:	MDP 25 Pad	North Reference:	True
Well:	Federal 33D-33-691	Survey Calculation Method:	Minimum Curvature
Wellbore:	Wellbore #1		
Design:	plan1 06may11 rbw		

Planned Survey									
Measured Depth (ft)	Inclination (°)	Azimuth (°)	Vertical Depth (ft)	+N/-S (ft)	+E/-W (ft)	Vertical Section (ft)	Dogleg Rate (°/100ft)	Build Rate (°/100ft)	Turn Rate (°/100ft)
950.00	0.000	0.00	950.00	0.00	0.00	0.00	0.00	0.00	0.00
Start Build 2.00									
1,000.00	1.000	10.00	1,000.00	0.43	0.08	0.41	2.00	2.00	0.00
1,100.00	3.000	10.00	1,099.93	3.87	0.68	3.71	2.00	2.00	0.00
1,200.00	5.000	10.00	1,199.68	10.74	1.89	10.29	2.00	2.00	0.00
Start DLS 5.00 TFO 22.75									
1,300.00	9.803	21.42	1,298.83	22.96	5.76	22.84	5.00	4.80	11.42
1,400.00	14.737	25.31	1,396.51	42.40	14.31	43.98	5.00	4.93	3.89
1,500.00	19.704	27.27	1,492.00	68.90	27.48	73.53	5.00	4.97	1.96
1,600.00	24.684	28.47	1,584.56	102.26	45.17	111.28	5.00	4.98	1.20
1,700.00	29.670	29.28	1,673.50	142.23	67.24	156.94	5.00	4.99	0.81
1,755.73	32.450	29.63	1,721.23	167.26	81.38	185.69	5.00	4.99	0.63
Start 2936.99 hold at 1755.73 MD									
1,800.00	32.450	29.63	1,758.59	187.91	93.13	209.44	0.00	0.00	0.00
1,900.00	32.450	29.63	1,842.97	234.55	119.66	263.10	0.00	0.00	0.00
2,000.00	32.450	29.63	1,927.36	281.19	146.19	316.76	0.00	0.00	0.00
2,100.00	32.450	29.63	2,011.74	327.82	172.72	370.41	0.00	0.00	0.00
2,200.00	32.450	29.63	2,096.13	374.46	199.25	424.07	0.00	0.00	0.00
2,300.00	32.450	29.63	2,180.52	421.10	225.78	477.72	0.00	0.00	0.00
2,400.00	32.450	29.63	2,264.90	467.74	252.31	531.38	0.00	0.00	0.00
2,500.00	32.450	29.63	2,349.29	514.38	278.84	585.04	0.00	0.00	0.00
2,600.00	32.450	29.63	2,433.67	561.02	305.37	638.69	0.00	0.00	0.00
2,700.00	32.450	29.63	2,518.06	607.66	331.90	692.35	0.00	0.00	0.00
2,800.00	32.450	29.63	2,602.44	654.30	358.43	746.00	0.00	0.00	0.00
2,900.00	32.450	29.63	2,686.83	700.94	384.96	799.66	0.00	0.00	0.00
3,000.00	32.450	29.63	2,771.22	747.58	411.49	853.32	0.00	0.00	0.00
3,100.00	32.450	29.63	2,855.60	794.22	438.02	906.97	0.00	0.00	0.00
3,200.00	32.450	29.63	2,939.99	840.86	464.55	960.63	0.00	0.00	0.00
3,300.00	32.450	29.63	3,024.37	887.50	491.08	1,014.28	0.00	0.00	0.00
3,400.00	32.450	29.63	3,108.76	934.14	517.61	1,067.94	0.00	0.00	0.00
3,500.00	32.450	29.63	3,193.14	980.78	544.14	1,121.60	0.00	0.00	0.00
3,600.00	32.450	29.63	3,277.53	1,027.41	570.67	1,175.25	0.00	0.00	0.00
3,700.00	32.450	29.63	3,361.91	1,074.05	597.20	1,228.91	0.00	0.00	0.00
3,800.00	32.450	29.63	3,446.30	1,120.69	623.73	1,282.56	0.00	0.00	0.00
3,900.00	32.450	29.63	3,530.69	1,167.33	650.26	1,336.22	0.00	0.00	0.00
4,000.00	32.450	29.63	3,615.07	1,213.97	676.79	1,389.88	0.00	0.00	0.00
4,015.32	32.450	29.63	3,628.00	1,221.12	680.85	1,398.10	0.00	0.00	0.00
Mesaverde									
4,100.00	32.450	29.63	3,699.46	1,260.61	703.32	1,443.53	0.00	0.00	0.00
4,200.00	32.450	29.63	3,783.84	1,307.25	729.85	1,497.19	0.00	0.00	0.00
4,300.00	32.450	29.63	3,868.23	1,353.89	756.38	1,550.84	0.00	0.00	0.00
4,400.00	32.450	29.63	3,952.61	1,400.53	782.91	1,604.50	0.00	0.00	0.00
4,500.00	32.450	29.63	4,037.00	1,447.17	809.44	1,658.16	0.00	0.00	0.00
4,600.00	32.450	29.63	4,121.38	1,493.81	835.97	1,711.81	0.00	0.00	0.00
4,692.72	32.450	29.63	4,199.62	1,537.05	860.57	1,761.56	0.00	0.00	0.00
Start Drop -3.50									
4,700.00	32.195	29.63	4,205.78	1,540.44	862.49	1,765.45	3.50	-3.50	0.00
4,800.00	28.695	29.63	4,291.98	1,584.47	887.54	1,816.12	3.50	-3.50	0.00
4,900.00	25.195	29.63	4,381.11	1,623.85	909.94	1,861.42	3.50	-3.50	0.00
5,000.00	21.695	29.63	4,472.84	1,658.43	929.61	1,901.20	3.50	-3.50	0.00
5,100.00	18.195	29.63	4,566.82	1,688.08	946.48	1,935.31	3.50	-3.50	0.00
5,111.75	17.784	29.63	4,578.00	1,691.23	948.27	1,938.94	3.50	-3.50	0.00
Price Coal									

Database:	Compass VM	Local Co-ordinate Reference:	Well Federal 33D-33-691
Company:	Bill Barrett Corp.	TVD Reference:	KB @ 6618.00ft
Project:	Garfield County, Colorado [NAD83]	MD Reference:	KB @ 6618.00ft
Site:	MDP 25 Pad	North Reference:	True
Well:	Federal 33D-33-691	Survey Calculation Method:	Minimum Curvature
Wellbore:	Wellbore #1		
Design:	plan1 06may11 rbw		

Planned Survey									
Measured Depth (ft)	Inclination (°)	Azimuth (°)	Vertical Depth (ft)	+N/-S (ft)	+E/-W (ft)	Vertical Section (ft)	Dogleg Rate (°/100ft)	Build Rate (°/100ft)	Turn Rate (°/100ft)
5,200.00	14.695	29.63	4,662.72	1,712.68	960.47	1,963.62	3.50	-3.50	0.00
5,300.00	11.195	29.63	4,760.16	1,732.15	971.55	1,986.02	3.50	-3.50	0.00
5,400.00	7.695	29.63	4,858.79	1,746.41	979.66	2,002.42	3.50	-3.50	0.00
5,500.00	4.195	29.63	4,958.24	1,755.42	984.78	2,012.78	3.50	-3.50	0.00
5,600.00	0.695	29.63	5,058.13	1,759.13	986.89	2,017.05	3.50	-3.50	0.00
5,619.87	0.000	0.00	5,078.00	1,759.23	986.95	2,017.17	3.50	-3.50	0.00
Start 3390.00 hold at 5619.87 MD - Top of Gas - Federal 33D Target									
5,700.00	0.000	0.00	5,158.13	1,759.23	986.95	2,017.17	0.00	0.00	0.00
5,800.00	0.000	0.00	5,258.13	1,759.23	986.95	2,017.17	0.00	0.00	0.00
5,900.00	0.000	0.00	5,358.13	1,759.23	986.95	2,017.17	0.00	0.00	0.00
6,000.00	0.000	0.00	5,458.13	1,759.23	986.95	2,017.17	0.00	0.00	0.00
6,100.00	0.000	0.00	5,558.13	1,759.23	986.95	2,017.17	0.00	0.00	0.00
6,200.00	0.000	0.00	5,658.13	1,759.23	986.95	2,017.17	0.00	0.00	0.00
6,300.00	0.000	0.00	5,758.13	1,759.23	986.95	2,017.17	0.00	0.00	0.00
6,400.00	0.000	0.00	5,858.13	1,759.23	986.95	2,017.17	0.00	0.00	0.00
6,500.00	0.000	0.00	5,958.13	1,759.23	986.95	2,017.17	0.00	0.00	0.00
6,600.00	0.000	0.00	6,058.13	1,759.23	986.95	2,017.17	0.00	0.00	0.00
6,700.00	0.000	0.00	6,158.13	1,759.23	986.95	2,017.17	0.00	0.00	0.00
6,800.00	0.000	0.00	6,258.13	1,759.23	986.95	2,017.17	0.00	0.00	0.00
6,900.00	0.000	0.00	6,358.13	1,759.23	986.95	2,017.17	0.00	0.00	0.00
7,000.00	0.000	0.00	6,458.13	1,759.23	986.95	2,017.17	0.00	0.00	0.00
7,100.00	0.000	0.00	6,558.13	1,759.23	986.95	2,017.17	0.00	0.00	0.00
7,200.00	0.000	0.00	6,658.13	1,759.23	986.95	2,017.17	0.00	0.00	0.00
7,300.00	0.000	0.00	6,758.13	1,759.23	986.95	2,017.17	0.00	0.00	0.00
7,400.00	0.000	0.00	6,858.13	1,759.23	986.95	2,017.17	0.00	0.00	0.00
7,500.00	0.000	0.00	6,958.13	1,759.23	986.95	2,017.17	0.00	0.00	0.00
7,600.00	0.000	0.00	7,058.13	1,759.23	986.95	2,017.17	0.00	0.00	0.00
7,700.00	0.000	0.00	7,158.13	1,759.23	986.95	2,017.17	0.00	0.00	0.00
7,800.00	0.000	0.00	7,258.13	1,759.23	986.95	2,017.17	0.00	0.00	0.00
7,900.00	0.000	0.00	7,358.13	1,759.23	986.95	2,017.17	0.00	0.00	0.00
8,000.00	0.000	0.00	7,458.13	1,759.23	986.95	2,017.17	0.00	0.00	0.00
8,039.87	0.000	0.00	7,498.00	1,759.23	986.95	2,017.17	0.00	0.00	0.00
Rollins									
8,100.00	0.000	0.00	7,558.13	1,759.23	986.95	2,017.17	0.00	0.00	0.00
8,200.00	0.000	0.00	7,658.13	1,759.23	986.95	2,017.17	0.00	0.00	0.00
8,300.00	0.000	0.00	7,758.13	1,759.23	986.95	2,017.17	0.00	0.00	0.00
8,400.00	0.000	0.00	7,858.13	1,759.23	986.95	2,017.17	0.00	0.00	0.00
8,500.00	0.000	0.00	7,958.13	1,759.23	986.95	2,017.17	0.00	0.00	0.00
8,600.00	0.000	0.00	8,058.13	1,759.23	986.95	2,017.17	0.00	0.00	0.00
8,700.00	0.000	0.00	8,158.13	1,759.23	986.95	2,017.17	0.00	0.00	0.00
8,709.87	0.000	0.00	8,168.00	1,759.23	986.95	2,017.17	0.00	0.00	0.00
Corcoran									
8,800.00	0.000	0.00	8,258.13	1,759.23	986.95	2,017.17	0.00	0.00	0.00
8,900.00	0.000	0.00	8,358.13	1,759.23	986.95	2,017.17	0.00	0.00	0.00
9,000.00	0.000	0.00	8,458.13	1,759.23	986.95	2,017.17	0.00	0.00	0.00
9,009.87	0.000	0.00	8,468.00	1,759.23	986.95	2,017.17	0.00	0.00	0.00
TD at 9009.87 - Federal 33D PBHL 2495 FSL, 2023 FEL									

Database:	Compass VM	Local Co-ordinate Reference:	Well Federal 33D-33-691
Company:	Bill Barrett Corp.	TVD Reference:	KB @ 6618.00ft
Project:	Garfield County, Colorado [NAD83]	MD Reference:	KB @ 6618.00ft
Site:	MDP 25 Pad	North Reference:	True
Well:	Federal 33D-33-691	Survey Calculation Method:	Minimum Curvature
Wellbore:	Wellbore #1		
Design:	plan1 06may11 rbw		

Design Targets									
Target Name	Dip Angle	Dip Dir.	TVD	+N/-S	+E/-W	Northing	Easting	Latitude	Longitude
- hit/miss target	(°)	(°)	(ft)	(ft)	(ft)	(usft)	(usft)		
- Shape									
Federal 33D Target	0.000	0.00	5,078.00	1,759.23	986.95	1,607,754.03	2,419,659.41	39° 29' 2.50 N	107° 33' 22.71 W
- plan hits target center									
- Circle (radius 25.00)									
Federal 33D PBHL 2495	0.000	0.00	8,468.00	1,759.23	986.95	1,607,754.03	2,419,659.41	39° 29' 2.50 N	107° 33' 22.71 W
- plan hits target center									
- Point									

Casing Points					
Measured Depth	Vertical Depth	Name		Casing Diameter	Hole Diameter
(ft)	(ft)			(ft)	(ft)
847.00	847.00	9 5/8"		0.80	1.02

Formations					
Measured Depth	Vertical Depth	Name		Lithology	Dip Direction
(ft)	(ft)				(°)
4,015.32	3,628.00	Mesaverde			0.00
5,111.75	4,578.00	Price Coal			0.00
5,619.87	5,078.00	Top of Gas			0.00
8,039.87	7,498.00	Rollins			0.00
8,709.87	8,168.00	Corcoran			0.00

Plan Annotations				
Measured Depth	Vertical Depth	Local Coordinates		Comment
(ft)	(ft)	+N/-S (ft)	+E/-W (ft)	
950.00	950.00	0.00	0.00	Start Build 2.00
1,200.00	1,199.68	10.74	1.89	Start DLS 5.00 TFO 22.75
1,755.73	1,721.23	167.26	81.38	Start 2936.99 hold at 1755.73 MD
4,692.72	4,199.62	1,537.05	860.57	Start Drop -3.50
5,619.87	5,078.00	1,759.23	986.95	Start 3390.00 hold at 5619.87 MD
9,009.87	8,468.00	1,759.23	986.95	TD at 9009.87