



Bill Barrett Corporation

Bill Barrett Corp.

Garfield County, Colorado [NAD83]

MDP 25 Pad

Federal 23D-33-691

Wellbore #1

Plan: plan1 06may11 rbw

Standard Planning Report

10 May, 2011

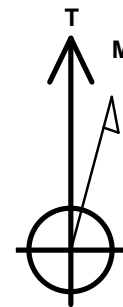
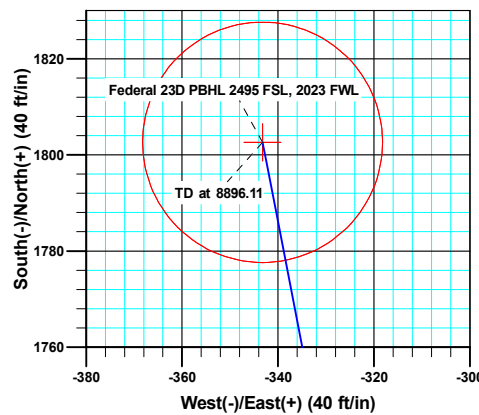
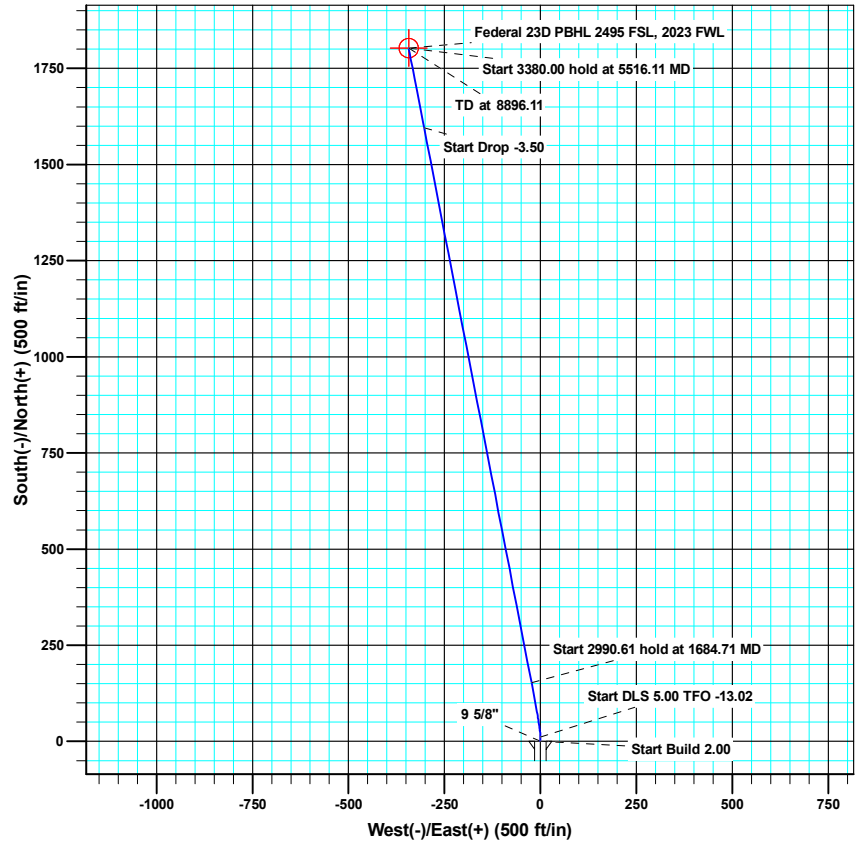
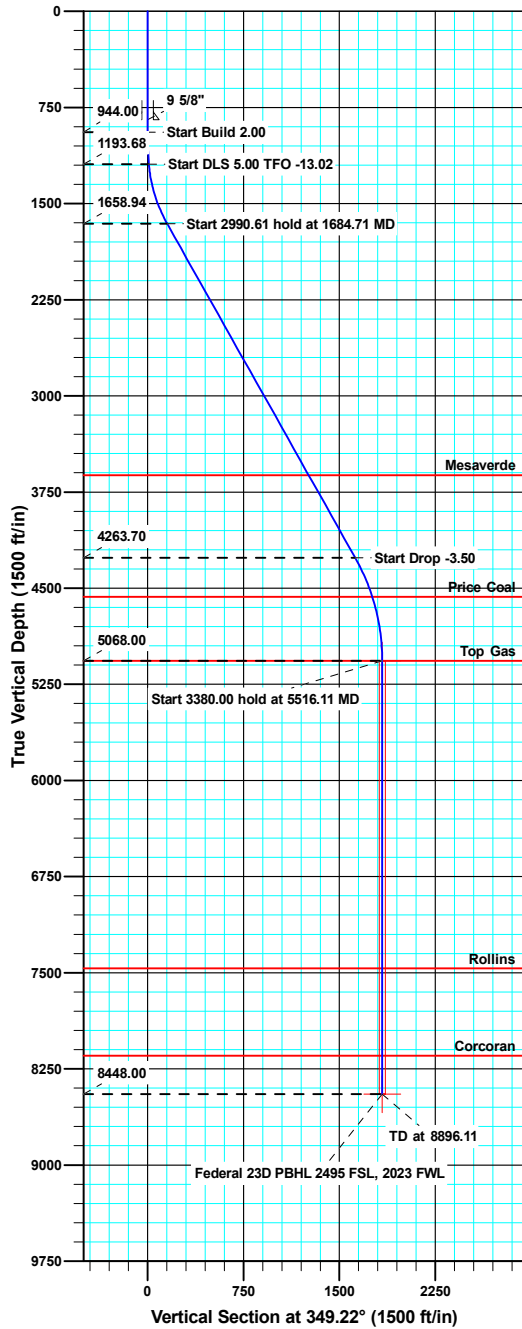


WELL DETAILS: Federal 23D-33-691

North American Datum 1983 , US State Plane 1983 , Colorado Central Zone

Ground Level: 6595.00

+N/-S +E/-W Northing Easting Latitude Longitude
0.00 0.00 1606019.63 2418624.96 39° 28' 45.13 N 107° 33' 35.40 W



Azimuths to True North
Magnetic North: 10.17°

Magnetic Field
Strength: 52303.9snT
Dip Angle: 65.81°
Date: 05/06/2011
Model: IGRF2010

SECTION DETAILS

MD	Inc	Azi	TVD	+N/-S	+E/-W	Dleg	TFace	VSect	Target
0.00	0.000	0.00	0.00	0.00	0.00	0.00	0.00	0.00	
944.00	0.000	0.00	944.00	0.00	0.00	0.00	0.00	0.00	
1194.00	5.000	0.00	1193.68	10.90	0.00	2.00	0.00	10.71	
1684.71	29.427	349.03	1658.94	152.81	-23.30	5.00	-13.02	154.47	
4675.32	29.427	349.03	4263.70	1595.29	-303.01	0.00	0.00	1623.81	
5516.11	0.000	0.00	5068.00	1802.63	-343.21	3.50	180.00	1835.02	Federal 23D Target
8896.11	0.000	0.00	8448.00	1802.63	-343.21	0.00	0.00	1835.02	Federal 23D PBHL 2495 FSL, 2023 FWL



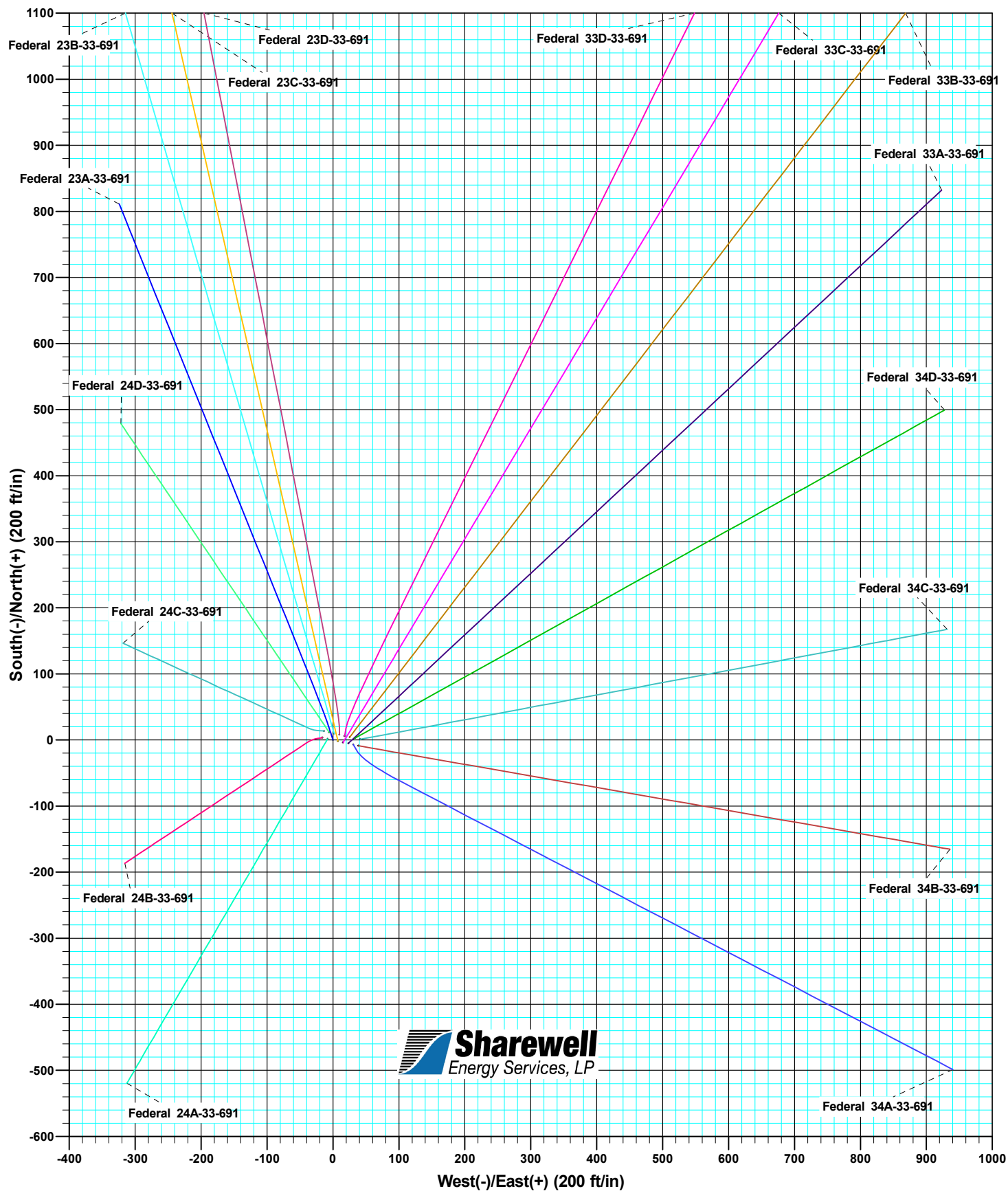


Bill Barrett Corporation

WELL DETAILS: MDP 25 Pad

Ground Level: 6595.00

North American Datum 1983		US State Plane 1983		Colorado Central Zone	
+N/-S	+E/-W	Northing	Easting	Latitude	Longitude
0.00	0.00	1606011.85	2418614.90	39° 28' 45.05 N	107° 33' 35.53 W



Database:	Compass VM	Local Co-ordinate Reference:	Well Federal 23D-33-691
Company:	Bill Barrett Corp.	TVD Reference:	KB @ 6618.00ft
Project:	Garfield County, Colorado [NAD83]	MD Reference:	KB @ 6618.00ft
Site:	MDP 25 Pad	North Reference:	True
Well:	Federal 23D-33-691	Survey Calculation Method:	Minimum Curvature
Wellbore:	Wellbore #1		
Design:	plan1 06may11 rbw		

Project	Garfield County, Colorado [NAD83]		
Map System:	US State Plane 1983	System Datum:	Mean Sea Level
Geo Datum:	North American Datum 1983		
Map Zone:	Colorado Central Zone		

Site		MDP 25 Pad			
Site Position:		Northing:	1,606,013.85 usft	Latitude:	39° 28' 45.07 N
From:	Lat/Long	Easting:	2,418,607.05 usft	Longitude:	107° 33' 35.63 W
Position Uncertainty:	0.00 ft	Slot Radius:	1.10 ft	Grid Convergence:	-1.30

Well	Federal 23D-33-691					
Well Position	+N/-S	6.18 ft	Northing:	1,606,019.62 usft	Latitude:	39° 28' 45.13 N
	+E/-W	17.78 ft	Easting:	2,418,624.97 usft	Longitude:	107° 33' 35.40 W
Position Uncertainty		0.00 ft	Wellhead Elevation:		Ground Level:	6,595.00 ft

Wellbore	Wellbore #1				
Magnetics	Model Name	Sample Date	Declination (°)	Dip Angle (°)	Field Strength (nT)
	IGRF2010	05/06/11	10.17	65.81	52,304

Design	plan1 06may11 rbw			
Audit Notes:				
Version:	Phase:	PROTOTYPE	Tie On Depth:	0.00
Vertical Section:	Depth From (TVD) (ft)	+N/-S (ft)	+E/-W (ft)	Direction (°)
	0.00	0.00	0.00	349.22

Plan Sections										
Measured Depth (ft)	Inclination (°)	Azimuth (°)	Vertical Depth (ft)	+N/-S (ft)	+E/-W (ft)	Dogleg Rate (°/100ft)	Build Rate (°/100ft)	Turn Rate (°/100ft)	TFO (°)	Target
0.00	0.000	0.00	0.00	0.00	0.00	0.00	0.00	0.00	0.00	
944.00	0.000	0.00	944.00	0.00	0.00	0.00	0.00	0.00	0.00	
1,194.00	5.000	0.00	1,193.68	10.90	0.00	2.00	2.00	0.00	0.00	
1,684.71	29.427	349.03	1,658.94	152.81	-23.30	5.00	4.98	-2.24	-13.02	
4,675.32	29.427	349.03	4,263.70	1,595.29	-303.01	0.00	0.00	0.00	0.00	
5,516.11	0.000	0.00	5,068.00	1,802.63	-343.21	3.50	-3.50	0.00	180.00	Federal 23D Target
8,896.11	0.000	0.00	8,448.00	1,802.63	-343.21	0.00	0.00	0.00	0.00	Federal 23D PBHL 24

Database:	Compass VM	Local Co-ordinate Reference:	Well Federal 23D-33-691
Company:	Bill Barrett Corp.	TVD Reference:	KB @ 6618.00ft
Project:	Garfield County, Colorado [NAD83]	MD Reference:	KB @ 6618.00ft
Site:	MDP 25 Pad	North Reference:	True
Well:	Federal 23D-33-691	Survey Calculation Method:	Minimum Curvature
Wellbore:	Wellbore #1		
Design:	plan1 06may11 rbw		

Planned Survey									
Measured Depth (ft)	Inclination (°)	Azimuth (°)	Vertical Depth (ft)	+N/-S (ft)	+E/-W (ft)	Vertical Section (ft)	Dogleg Rate (°/100ft)	Build Rate (°/100ft)	Turn Rate (°/100ft)
944.00	0.000	0.00	944.00	0.00	0.00	0.00	0.00	0.00	0.00
Start Build 2.00									
1,000.00	1.120	0.00	1,000.00	0.55	0.00	0.54	2.00	2.00	0.00
1,100.00	3.120	0.00	1,099.92	4.25	0.00	4.17	2.00	2.00	0.00
1,194.00	5.000	0.00	1,193.68	10.90	0.00	10.71	2.00	2.00	0.00
Start DLS 5.00 TFO -13.02									
1,200.00	5.293	359.27	1,199.66	11.44	0.00	11.24	5.00	4.88	-12.21
1,300.00	10.234	353.28	1,298.71	24.88	-1.10	24.65	5.00	4.94	-5.99
1,400.00	15.213	351.17	1,396.23	46.68	-4.16	46.64	5.00	4.98	-2.10
1,500.00	20.202	350.09	1,491.46	76.68	-9.15	77.03	5.00	4.99	-1.08
1,600.00	25.196	349.42	1,583.69	114.63	-16.03	115.61	5.00	4.99	-0.67
1,684.71	29.427	349.03	1,658.94	152.81	-23.30	154.47	5.00	5.00	-0.47
Start 2990.61 hold at 1684.71 MD									
1,700.00	29.427	349.03	1,672.25	160.18	-24.73	161.98	0.00	0.00	0.00
1,800.00	29.427	349.03	1,759.35	208.41	-34.09	211.11	0.00	0.00	0.00
1,900.00	29.427	349.03	1,846.45	256.65	-43.44	260.24	0.00	0.00	0.00
2,000.00	29.427	349.03	1,933.55	304.88	-52.79	309.37	0.00	0.00	0.00
2,100.00	29.427	349.03	2,020.64	353.11	-62.15	358.51	0.00	0.00	0.00
2,200.00	29.427	349.03	2,107.74	401.35	-71.50	407.64	0.00	0.00	0.00
2,300.00	29.427	349.03	2,194.84	449.58	-80.85	456.77	0.00	0.00	0.00
2,400.00	29.427	349.03	2,281.94	497.81	-90.20	505.90	0.00	0.00	0.00
2,500.00	29.427	349.03	2,369.04	546.05	-99.56	555.03	0.00	0.00	0.00
2,600.00	29.427	349.03	2,456.13	594.28	-108.91	604.16	0.00	0.00	0.00
2,700.00	29.427	349.03	2,543.23	642.51	-118.26	653.30	0.00	0.00	0.00
2,800.00	29.427	349.03	2,630.33	690.75	-127.61	702.43	0.00	0.00	0.00
2,900.00	29.427	349.03	2,717.43	738.98	-136.97	751.56	0.00	0.00	0.00
3,000.00	29.427	349.03	2,804.53	787.22	-146.32	800.69	0.00	0.00	0.00
3,100.00	29.427	349.03	2,891.62	835.45	-155.67	849.82	0.00	0.00	0.00
3,200.00	29.427	349.03	2,978.72	883.68	-165.03	898.95	0.00	0.00	0.00
3,300.00	29.427	349.03	3,065.82	931.92	-174.38	948.09	0.00	0.00	0.00
3,400.00	29.427	349.03	3,152.92	980.15	-183.73	997.22	0.00	0.00	0.00
3,500.00	29.427	349.03	3,240.01	1,028.38	-193.08	1,046.35	0.00	0.00	0.00
3,600.00	29.427	349.03	3,327.11	1,076.62	-202.44	1,095.48	0.00	0.00	0.00
3,700.00	29.427	349.03	3,414.21	1,124.85	-211.79	1,144.61	0.00	0.00	0.00
3,800.00	29.427	349.03	3,501.31	1,173.08	-221.14	1,193.74	0.00	0.00	0.00
3,900.00	29.427	349.03	3,588.41	1,221.32	-230.49	1,242.88	0.00	0.00	0.00
3,933.98	29.427	349.03	3,618.00	1,237.71	-233.67	1,259.57	0.00	0.00	0.00
Mesaverde									
4,000.00	29.427	349.03	3,675.50	1,269.55	-239.85	1,292.01	0.00	0.00	0.00
4,100.00	29.427	349.03	3,762.60	1,317.79	-249.20	1,341.14	0.00	0.00	0.00
4,200.00	29.427	349.03	3,849.70	1,366.02	-258.55	1,390.27	0.00	0.00	0.00
4,300.00	29.427	349.03	3,936.80	1,414.25	-267.91	1,439.40	0.00	0.00	0.00
4,400.00	29.427	349.03	4,023.90	1,462.49	-277.26	1,488.54	0.00	0.00	0.00
4,500.00	29.427	349.03	4,110.99	1,510.72	-286.61	1,537.67	0.00	0.00	0.00
4,600.00	29.427	349.03	4,198.09	1,558.95	-295.96	1,586.80	0.00	0.00	0.00
4,675.32	29.427	349.03	4,263.70	1,595.29	-303.01	1,623.81	0.00	0.00	0.00
Start Drop -3.50									
4,700.00	28.564	349.03	4,285.28	1,607.03	-305.29	1,635.77	3.50	-3.50	0.00
4,800.00	25.064	349.03	4,374.51	1,651.31	-313.87	1,680.87	3.50	-3.50	0.00
4,900.00	21.564	349.03	4,466.33	1,690.15	-321.40	1,720.44	3.50	-3.50	0.00
5,000.00	18.064	349.03	4,560.40	1,723.42	-327.86	1,754.33	3.50	-3.50	0.00
5,007.99	17.784	349.03	4,568.00	1,725.84	-328.32	1,756.79	3.50	-3.50	0.00
Price Coal									

Database:	Compass VM	Local Co-ordinate Reference:	Well Federal 23D-33-691
Company:	Bill Barrett Corp.	TVD Reference:	KB @ 6618.00ft
Project:	Garfield County, Colorado [NAD83]	MD Reference:	KB @ 6618.00ft
Site:	MDP 25 Pad	North Reference:	True
Well:	Federal 23D-33-691	Survey Calculation Method:	Minimum Curvature
Wellbore:	Wellbore #1		
Design:	plan1 06may11 rbw		

Planned Survey									
Measured Depth (ft)	Inclination (°)	Azimuth (°)	Vertical Depth (ft)	+N/-S (ft)	+E/-W (ft)	Vertical Section (ft)	Dogleg Rate (°/100ft)	Build Rate (°/100ft)	Turn Rate (°/100ft)
5,100.00	14.564	349.03	4,656.36	1,751.00	-333.20	1,782.42	3.50	-3.50	0.00
5,200.00	11.064	349.03	4,753.85	1,772.76	-337.42	1,804.59	3.50	-3.50	0.00
5,300.00	7.564	349.03	4,852.52	1,788.65	-340.50	1,820.77	3.50	-3.50	0.00
5,400.00	4.064	349.03	4,951.99	1,798.59	-342.43	1,830.90	3.50	-3.50	0.00
5,500.00	0.564	349.03	5,051.89	1,802.56	-343.20	1,834.94	3.50	-3.50	0.00
5,516.11	0.000	0.00	5,068.00	1,802.63	-343.21	1,835.02	3.50	-3.50	0.00
Start 3380.00 hold at 5516.11 MD - Top Gas - Federal 23D Target									
5,600.00	0.000	0.00	5,151.89	1,802.63	-343.21	1,835.02	0.00	0.00	0.00
5,700.00	0.000	0.00	5,251.89	1,802.63	-343.21	1,835.02	0.00	0.00	0.00
5,800.00	0.000	0.00	5,351.89	1,802.63	-343.21	1,835.02	0.00	0.00	0.00
5,900.00	0.000	0.00	5,451.89	1,802.63	-343.21	1,835.02	0.00	0.00	0.00
6,000.00	0.000	0.00	5,551.89	1,802.63	-343.21	1,835.02	0.00	0.00	0.00
6,100.00	0.000	0.00	5,651.89	1,802.63	-343.21	1,835.02	0.00	0.00	0.00
6,200.00	0.000	0.00	5,751.89	1,802.63	-343.21	1,835.02	0.00	0.00	0.00
6,300.00	0.000	0.00	5,851.89	1,802.63	-343.21	1,835.02	0.00	0.00	0.00
6,400.00	0.000	0.00	5,951.89	1,802.63	-343.21	1,835.02	0.00	0.00	0.00
6,500.00	0.000	0.00	6,051.89	1,802.63	-343.21	1,835.02	0.00	0.00	0.00
6,600.00	0.000	0.00	6,151.89	1,802.63	-343.21	1,835.02	0.00	0.00	0.00
6,700.00	0.000	0.00	6,251.89	1,802.63	-343.21	1,835.02	0.00	0.00	0.00
6,800.00	0.000	0.00	6,351.89	1,802.63	-343.21	1,835.02	0.00	0.00	0.00
6,900.00	0.000	0.00	6,451.89	1,802.63	-343.21	1,835.02	0.00	0.00	0.00
7,000.00	0.000	0.00	6,551.89	1,802.63	-343.21	1,835.02	0.00	0.00	0.00
7,100.00	0.000	0.00	6,651.89	1,802.63	-343.21	1,835.02	0.00	0.00	0.00
7,200.00	0.000	0.00	6,751.89	1,802.63	-343.21	1,835.02	0.00	0.00	0.00
7,300.00	0.000	0.00	6,851.89	1,802.63	-343.21	1,835.02	0.00	0.00	0.00
7,400.00	0.000	0.00	6,951.89	1,802.63	-343.21	1,835.02	0.00	0.00	0.00
7,500.00	0.000	0.00	7,051.89	1,802.63	-343.21	1,835.02	0.00	0.00	0.00
7,600.00	0.000	0.00	7,151.89	1,802.63	-343.21	1,835.02	0.00	0.00	0.00
7,700.00	0.000	0.00	7,251.89	1,802.63	-343.21	1,835.02	0.00	0.00	0.00
7,800.00	0.000	0.00	7,351.89	1,802.63	-343.21	1,835.02	0.00	0.00	0.00
7,900.00	0.000	0.00	7,451.89	1,802.63	-343.21	1,835.02	0.00	0.00	0.00
7,916.11	0.000	0.00	7,468.00	1,802.63	-343.21	1,835.02	0.00	0.00	0.00
Rollins									
8,000.00	0.000	0.00	7,551.89	1,802.63	-343.21	1,835.02	0.00	0.00	0.00
8,100.00	0.000	0.00	7,651.89	1,802.63	-343.21	1,835.02	0.00	0.00	0.00
8,200.00	0.000	0.00	7,751.89	1,802.63	-343.21	1,835.02	0.00	0.00	0.00
8,300.00	0.000	0.00	7,851.89	1,802.63	-343.21	1,835.02	0.00	0.00	0.00
8,400.00	0.000	0.00	7,951.89	1,802.63	-343.21	1,835.02	0.00	0.00	0.00
8,500.00	0.000	0.00	8,051.89	1,802.63	-343.21	1,835.02	0.00	0.00	0.00
8,596.11	0.000	0.00	8,148.00	1,802.63	-343.21	1,835.02	0.00	0.00	0.00
Corcoran									
8,600.00	0.000	0.00	8,151.89	1,802.63	-343.21	1,835.02	0.00	0.00	0.00
8,700.00	0.000	0.00	8,251.89	1,802.63	-343.21	1,835.02	0.00	0.00	0.00
8,800.00	0.000	0.00	8,351.89	1,802.63	-343.21	1,835.02	0.00	0.00	0.00
8,896.11	0.000	0.00	8,448.00	1,802.63	-343.21	1,835.02	0.00	0.00	0.00
TD at 8896.11 - Federal 23D PBHL 2495 FSL, 2023 FWL									

Database:	Compass VM	Local Co-ordinate Reference:	Well Federal 23D-33-691
Company:	Bill Barrett Corp.	TVD Reference:	KB @ 6618.00ft
Project:	Garfield County, Colorado [NAD83]	MD Reference:	KB @ 6618.00ft
Site:	MDP 25 Pad	North Reference:	True
Well:	Federal 23D-33-691	Survey Calculation Method:	Minimum Curvature
Wellbore:	Wellbore #1		
Design:	plan1 06may11 rbw		

Design Targets									
Target Name	Dip Angle	Dip Dir.	TVD	+N/-S	+E/-W	Northing	Easting	Latitude	Longitude
- hit/miss target	(°)	(°)	(ft)	(ft)	(ft)	(usft)	(usft)		
- Shape									
Federal 23D Target	0.000	0.00	5,068.00	1,802.63	-343.21	1,607,829.57	2,418,322.71	39° 29' 2.94 N	107° 33' 39.78 W
- plan hits target center									
- Point									
Federal 23D PBHL 2495	0.000	0.00	8,448.00	1,802.63	-343.21	1,607,829.57	2,418,322.71	39° 29' 2.94 N	107° 33' 39.78 W
- plan hits target center									
- Circle (radius 25.00)									

Casing Points					
Measured Depth	Vertical Depth	Name		Casing Diameter	Hole Diameter
(ft)	(ft)			(ft)	(ft)
845.00	845.00	9 5/8"		0.80	1.02

Formations					
Measured Depth	Vertical Depth	Name		Lithology	Dip Direction
(ft)	(ft)				(°)
3,933.98	3,618.00	Mesaverde			0.00
5,007.99	4,568.00	Price Coal			0.00
5,516.11	5,068.00	Top Gas			0.00
7,916.11	7,468.00	Rollins			0.00
8,596.11	8,148.00	Corcoran			0.00

Plan Annotations				
Measured Depth	Vertical Depth	Local Coordinates		Comment
(ft)	(ft)	+N/-S (ft)	+E/-W (ft)	
944.00	944.00	0.00	0.00	Start Build 2.00
1,194.00	1,193.68	10.90	0.00	Start DLS 5.00 TFO -13.02
1,684.71	1,658.94	152.81	-23.30	Start 2990.61 hold at 1684.71 MD
4,675.32	4,263.70	1,595.29	-303.01	Start Drop -3.50
5,516.11	5,068.00	1,802.63	-343.21	Start 3380.00 hold at 5516.11 MD
8,896.11	8,448.00	1,802.63	-343.21	TD at 8896.11