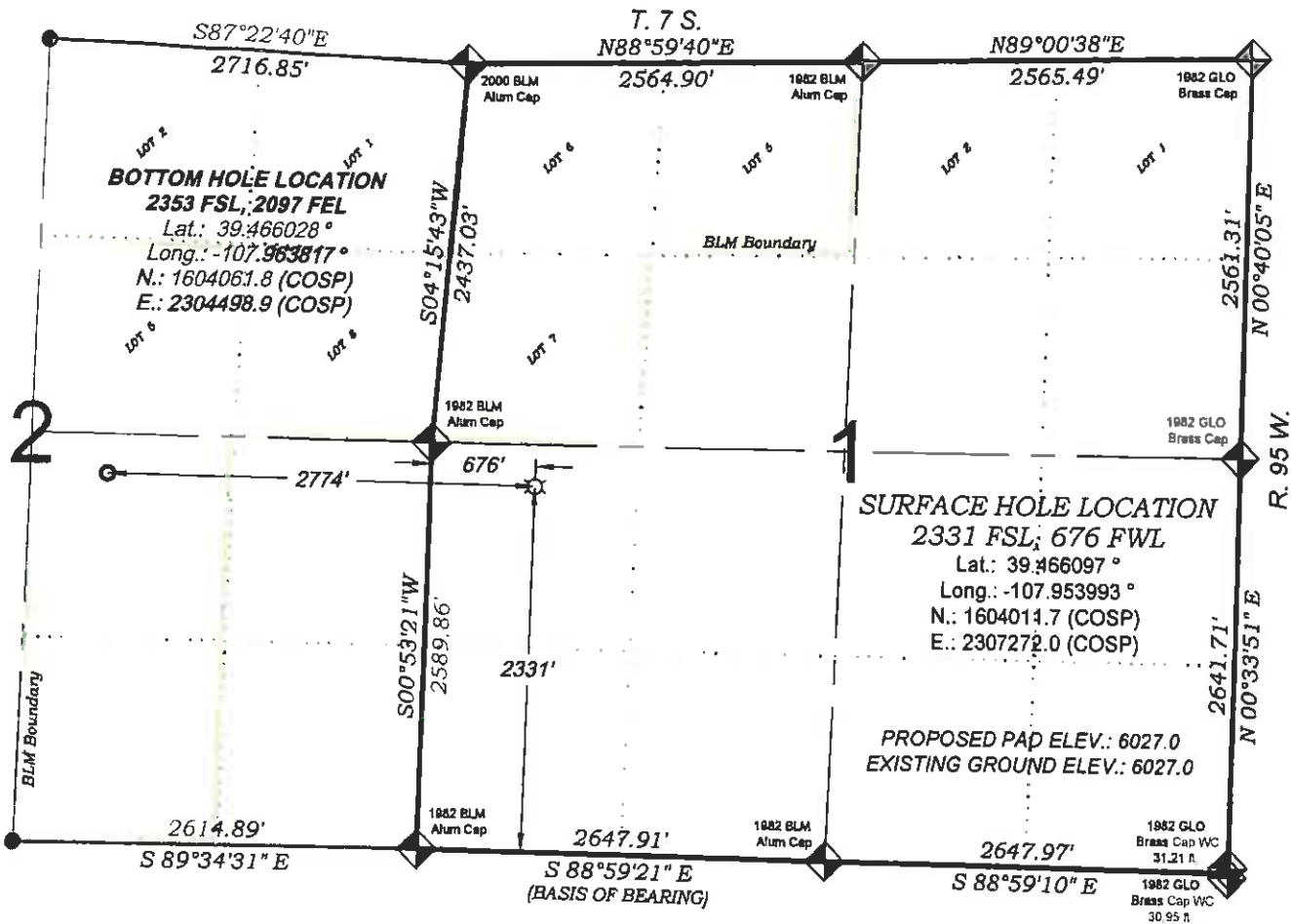
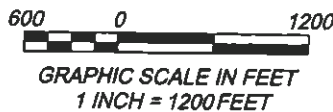


Diamond Elk, LLC PA 33-2



THERE ARE NO VISIBLE
IMPROVEMENTS WITHIN 400'
OF THIS LOCATION



- LEGEND -

FIELD LOCATED SECTION
MONUMENTS AS DESCRIBED

FIELD SURVEYED
WELL LOCATION

CALCULATED BOTTOM
HOLE LOCATION

CALCULATED SECTION
CORNER LOCATION

NOTES

- 1) ELEVATIONS BASED ON N.A. V.D. 1988 PUBLISHED COORDINATES.
- 2) LATITUDES AND LONGITUDES ARE BASE ON NAD 83, PUBLISHED COORDINATES
- 3) STATE PLANE COORDINATES ARE BASED ON COLORADO CENTRAL ZONE, U.S. SURVEY FEET.
- 4) ELEVATION MASK SET TO 15"
- 5) GPS OPERATOR J. KIRKPATRICK, OBSERVED A PDOP 2.3 ON SURVEY POINT NUMBER 112889.
- 6) SURFACE AND BOTTOM HOLE LOCATIONS ARE MEASURED 90° FROM SECTION LINES.

WELL LOCATION PLAT Prepared for:

Williams Williams Production, RMT

NW1/4 SW1/4, SECTION 1
T. 7 S., R. 95 W. of the 6th P.M.
GARFIELD COUNTY, COLORADO

SURVEYORS STATEMENT

I, MICHAEL J. LANGHORNE, A REGISTERED LAND SURVEYOR IN THE STATE OF COLORADO DO HEREBY CERTIFY THAT THE SURVEY SHOWN HEREON WAS PREPARED UNDER MY DIRECT SUPERVISION AND HAS BEEN STAKED ON THE GROUND AS SHOWN ON THE PLAT AND CHECKING THAT THIS MAP IS A TRUE REPRESENTATION THEREOF.

MICHAEL J. LANGHORNE, COLORADO REGISTRATION NO. 36572
FOR AND ON BEHALF OF
BOOKCLIFF SURVEY SERVICES, INC.

REFERENCES

- 1) 1982 DEPENDENT RESURVEY T. 7 S., R. 95 W., 6th P.M. (GLO PLAT)
- 2) U.S.G.S. QUAD: RULISON, CO

SURVEY DATE: 2/15/11
MAP DATE: 4/7/11
SCALE: 1" = 1200'
PLAT: 1 of 1
PROJECT: Williams Valley

BOOKCLIFF
Survey Services, Inc.

File East Third Street
Rt. 66, Colorado 81600
Ph. (970) 625-2720
Fax (970) 625-2773