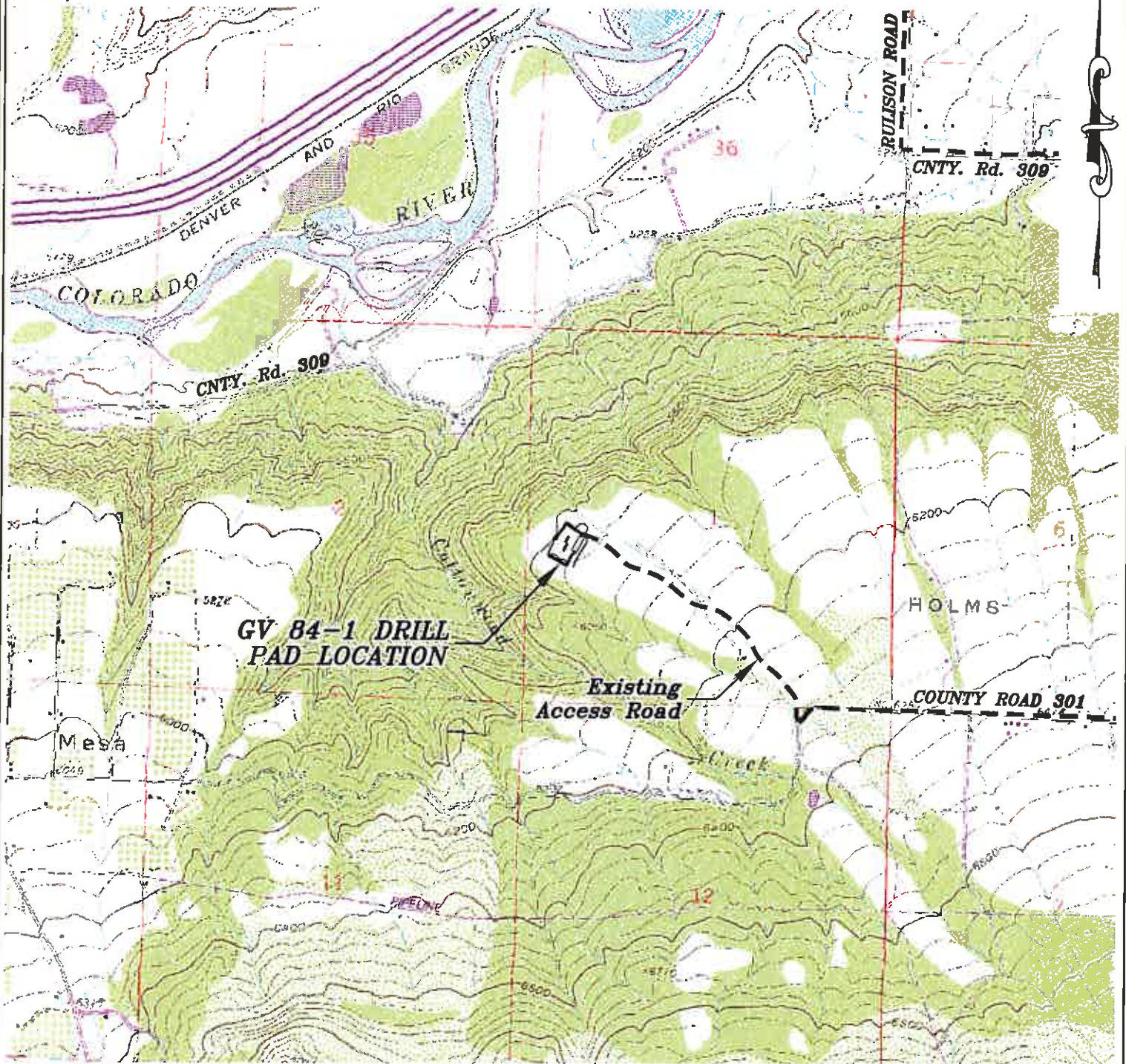


Section 1
T. 7 S., R. 95 W



1000 0 2000

GRAPHIC SCALE IN FEET
1 INCH = 2000 FEET

ACCESS DESCRIPTION:

FROM THE INTERSECTION OF STATE HIGHWAY 6 AND COUNTY ROAD 323 (RULISON ROAD) NORTH OF RULISON, PROCEED SOUTHERLY ALONG COUNTY ROAD 323 (RULISON ROAD) ± 1.1 MILES TO THE INTERSECTION WITH COUNTY ROAD 309 (RULISON PARACHUTE ROAD), PROCEED LEFT IN AN EASTERLY DIRECTION ± 2.3 MILES TO THE INTERSECTION WITH COUNTY ROAD 301, PROCEED RIGHT IN A SOUTHERLY TO WESTERLY DIRECTION ± 3.3 MILES TO THE INTERSECTION WITH A DIRT/GRAVEL ROAD, PROCEED RIGHT IN A NORTH WESTERLY DIRECTION ± 0.8 MILES TO THE GV 84-1 DRILL PAD LOCATION, AS SHOWN HEREON.

SCALE: 1" = 2000'
DATE: 4/6/11
PLAT: 5 of 7
PROJECT: Williams Valley
DFT: cws

Construction Plan Prepared for:
Williams Williams Production, RMT

GV 84-1 Drill Pad - Plat 5
ACCESS ROAD MAP *7 to 10*

Use Best Third-Party
Map: Colorado 1:50,000
PL: (171) 635-3726
Fax: (970) 635-3773

