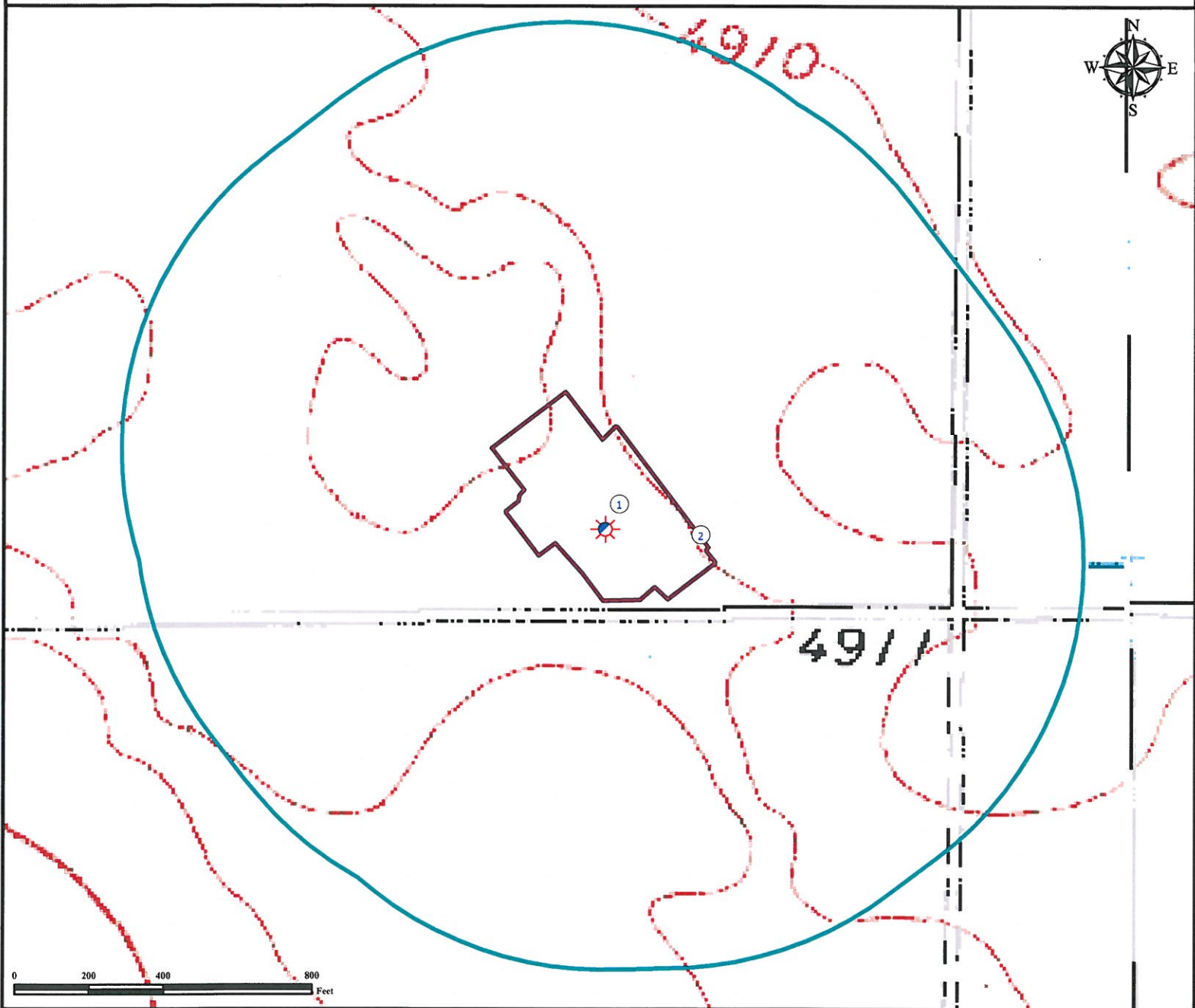


# Hydrology Map

## SLICK ROCK 18-44-7-60

SE¼ SE¼ SECTION 18, TOWNSHIP 7 NORTH, RANGE 60 WEST OF THE 6TH PRINCIPAL MERIDIAN



1. Proposed Well SLICK ROCK 18-44-7-60.

2. Operational Disturbance Area.

There are No Surface Waters with 1000' of the Disturbed Area of the Proposed Oil & Gas Location.

### Legend

 Proposed Well

 1000' Radius

 Disturbance Area

### Reference Location

\*\* All Measurements are Made from Reference Well

SLICK ROCK 18-44-7-60 (NAD83) \*\*

LAT: 40.56859° LONG: -104.13060°

Elevation: 4922.5 Feet



Use our resources to find yours!  
[www.petro-fs.com](http://www.petro-fs.com)  
(303) 928-7128

Field Date: 04/14/2011  
Drafting Date: 04/19/2011  
Drafter: KLM  
Checked By: BHF

Data Sources:  
- Aerial courtesy of NAIP (2009)

Prepared for:

