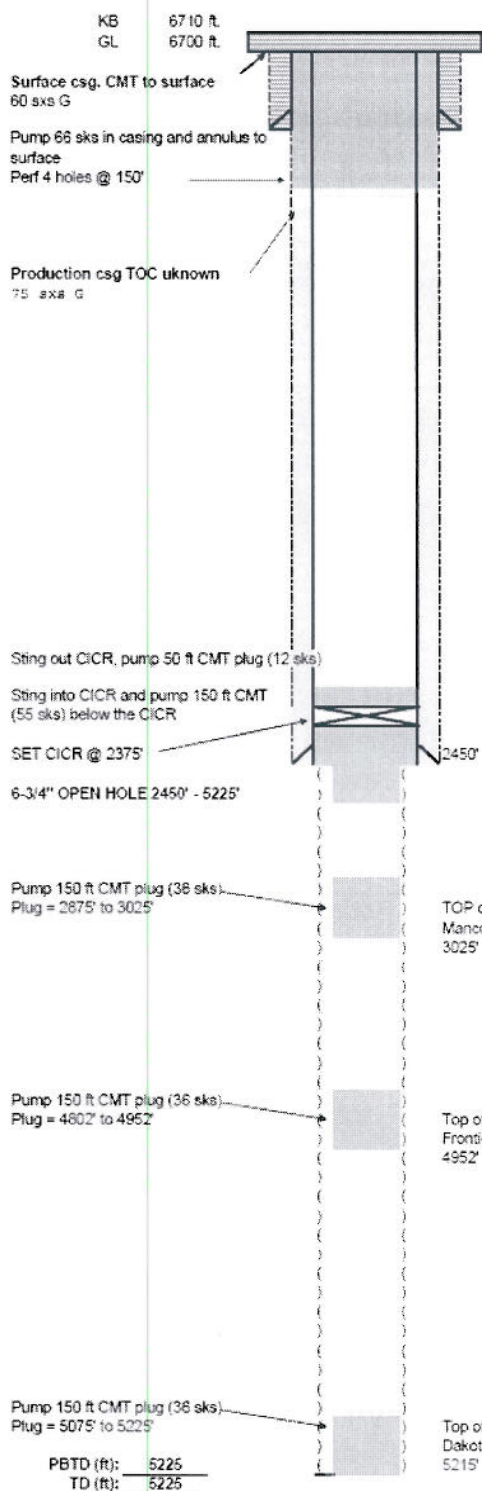


# Attachment #2 – Proposed Wellbore Diagram

## PROPOSED WELLBORE DIAGRAM

Operator: Encana Oil & Gas (USA) Inc.  
 Well Name: LOWER HORSE DRAW D 2217  
 Lease Number: COC098A  
 Unit Number:  
 Location: N4WNE Sec 35 - T25 - R103W  
 Field: Lower Horse Draw  
 County, State: Rio Blanco, CO  
 API Number: 05-103-08214-0000  
 Diagram Date: As of June 21, 2011



## CASING RECORD

SIZE (in)	WT (lb/ft)	GRADE	Hole D(in)	TOP (ft)	BTM (ft)	Date Run
10 3/4	40.5	K-55	14 3/4	0	94	
7 5/8	26.4	K-55	9 7/8	0	2450	

## TUBING RECORD

SIZE (in)	WT (lb/ft)	GRADE	TOP (ft)	BTM (ft)	Date Run

## JEWELRY RECORD

ITEM	MAKER	SIZE (in)	Max ID	TOP (ft)	Date Run

## PERFORATION RECORD

ZONE	TOP (ft)	BTM (ft)	SPF	Holes	Date Shot
Mancos B	3025	3455		OPEN HOLE	
Frontier	4952	5215		OPEN HOLE	
Dakota	5215	5225		OPEN HOLE	

## COMMENTS/HISTORY:

- ~ No record of CBL found, therefore TOC for production string assumed @ sur
- ~ Inner tubing string is coiled tubing
- ~ There is no casing in the Dakota because the well began to flow while drilling and the operator wanted to run casing under more controlled conditions. The hole ended up collapsing over the tubing before running casing.
- ~ Hole collapse took place over the entire open section: 2450-5215' (Found in letter dated May 8, 1987)