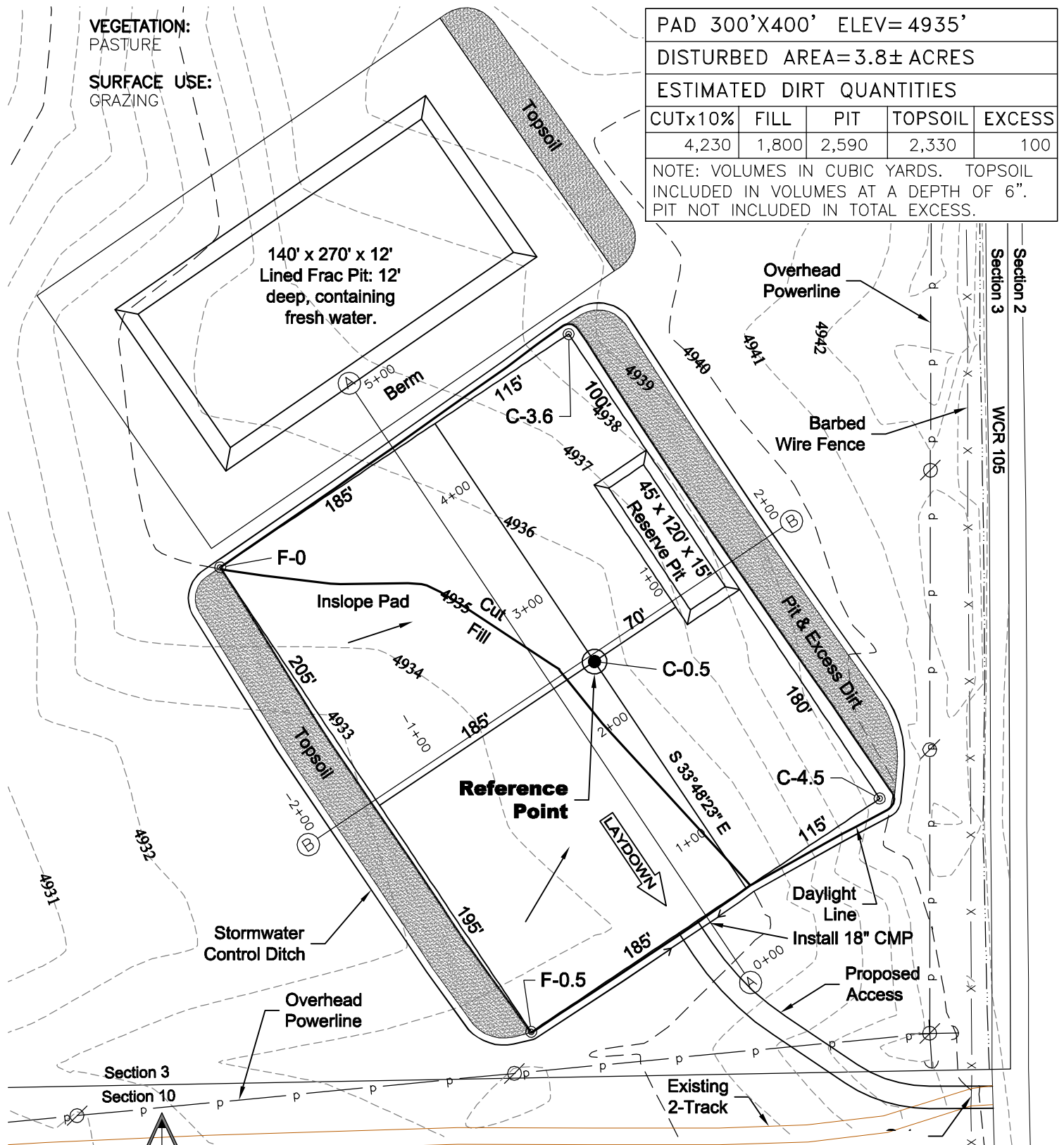


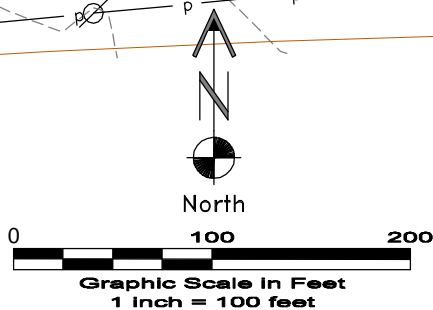
1 of 2

**SURFACE USE:**  
GRAZING

NOTE: VOLUMES IN CUBIC YARDS. TOPSOIL INCLUDED IN VOLUMES AT A DEPTH OF 6". PIT NOT INCLUDED IN TOTAL EXCESS.



**NOTE:**  
10% ALLOWANCE IS MADE FOR SOIL EXPANSION.

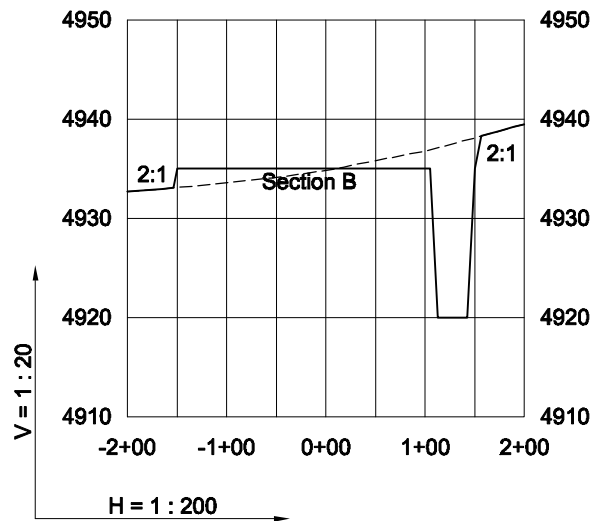
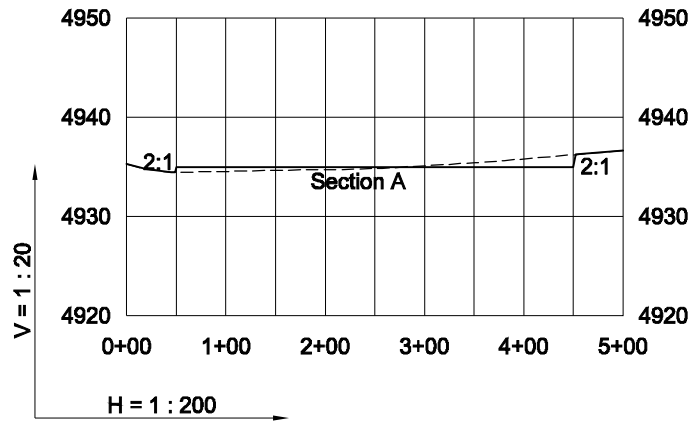


**CARRIZO OIL & GAS, INC**  
**PERGAMOS 3-44-7-60 PAD**

SE1/4 SE1/4 SECTION 3 T7N R60W  
6th PM WELD COUNTY COLORADO

# CONSTRUCTION LAYOUT DRAWING

2 of 2



4/14/11

----- Existing Ground  
 \_\_\_\_\_ Proposed Grade



**LAND SURVEYING AND MAPPING**  
**LAFAYETTE - WINTER PARK**  
 Ph 303 666 0379 Fx 303 665 6320

**CARRIZO OIL & GAS, INC**  
**PERGAMOS 3-44-7-60 PAD**

**SE1/4 SE1/4 SECTION 3 T7N R60W**  
**6th PM WELD COUNTY COLORADO**