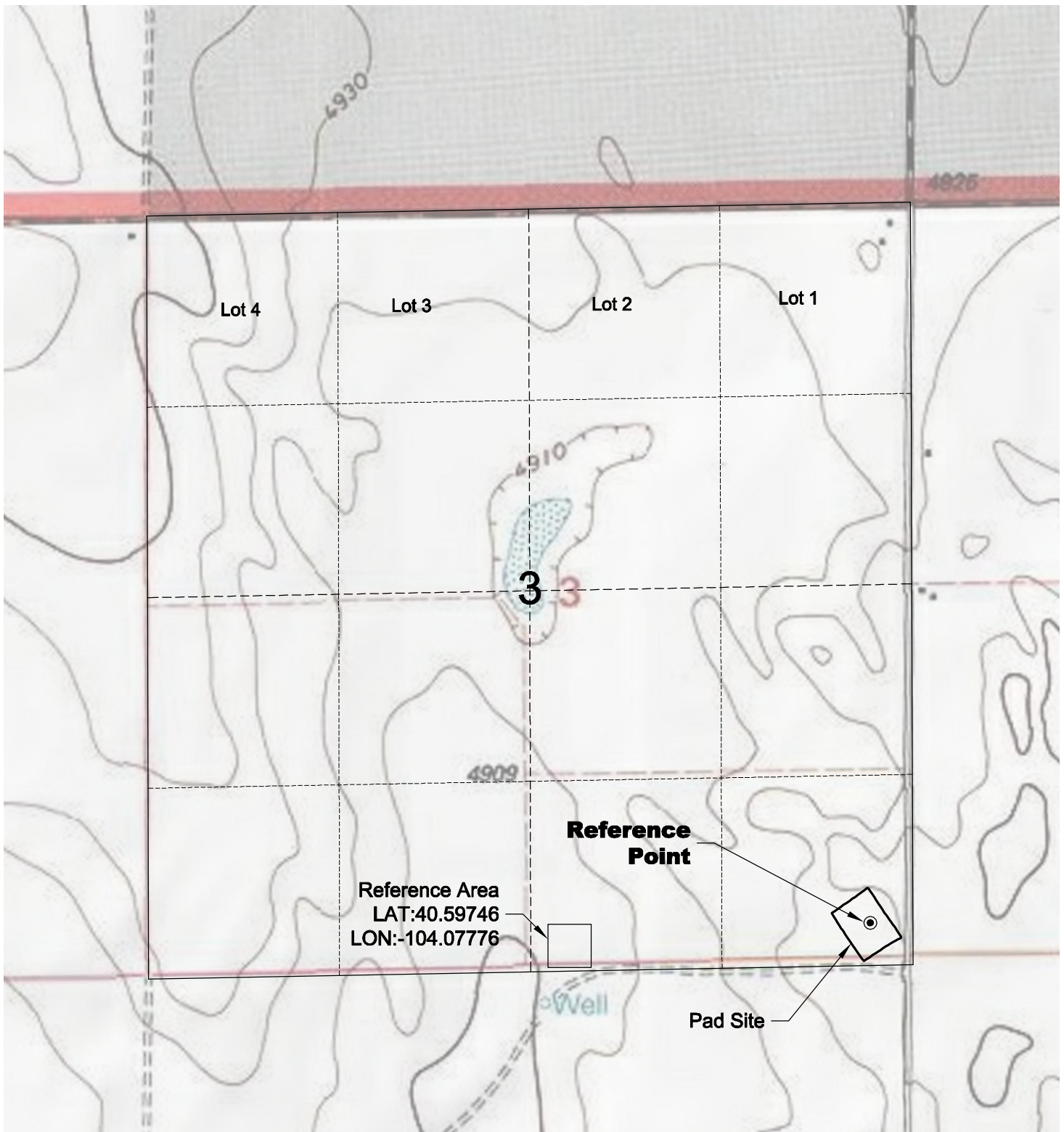


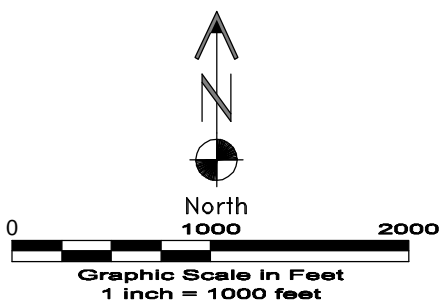
REFERENCE AREA MAP



Reference Area
LAT:40.59746
LON:-104.07776

Reference
Point

Pad Site



4/14/11


LAND SURVEYING AND MAPPING
LAFAYETTE - WINTER PARK
Ph 303 666 0379 Fx 303 665 6320

CARRIZO OIL & GAS, INC
PERGAMOS 3-44-7-60 PAD

SE1/4 SE1/4 SECTION 3 T7N R60W
6th PM WELD COUNTY COLORADO