

WELL LOCATION MAP

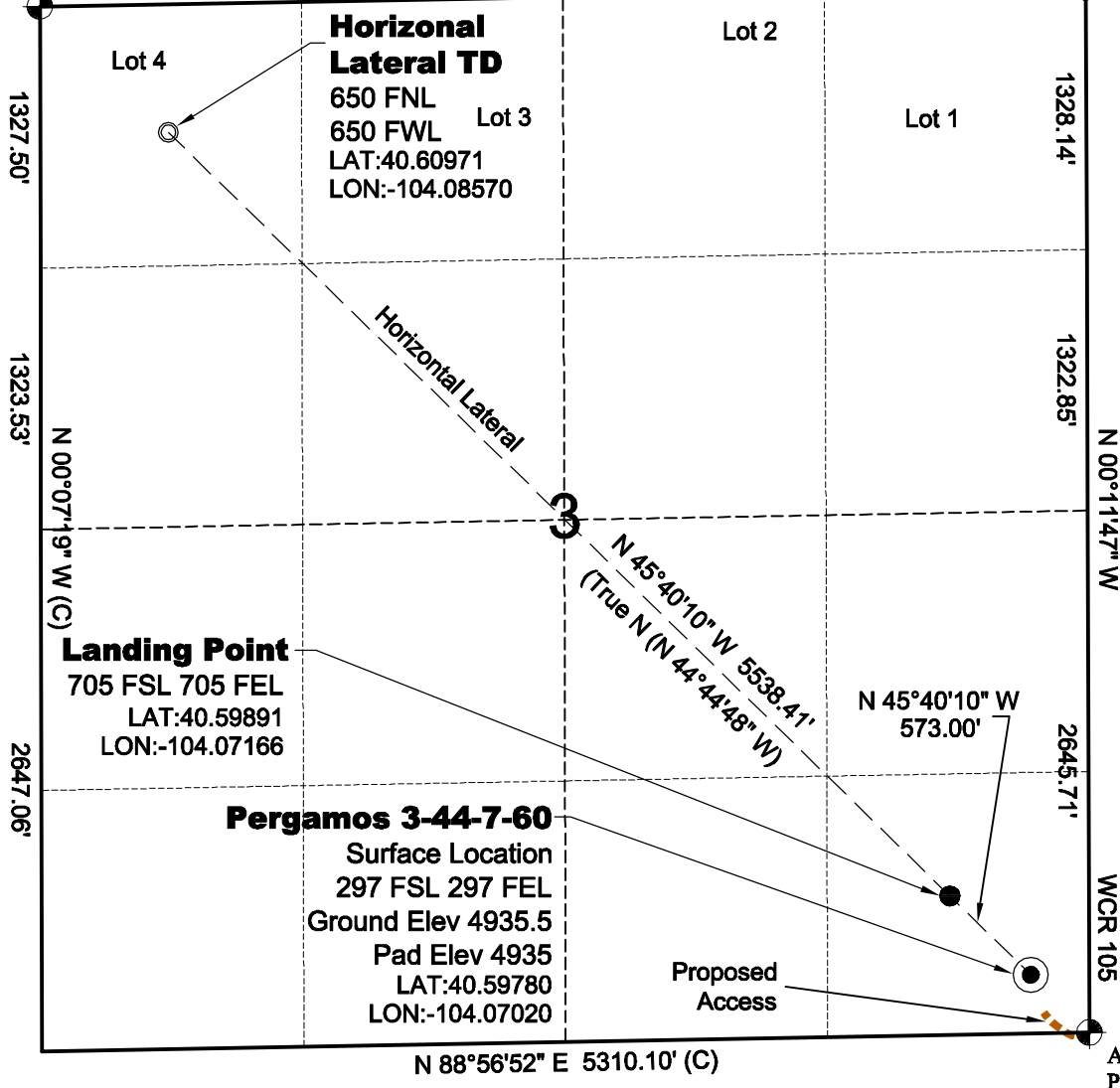
PERGAMOS
3-44-7-60 PAD

ALUM. CAP
PLS 30462

WCR 86

(Basis of Bearings)
N 88°57'42" E 5303.21'

ALUM. CAP
PLS 30462

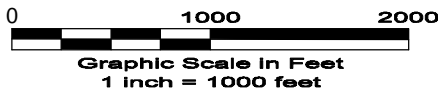


SURVEYOR'S STATEMENT

The undersigned hereby states that the well location shown hereon was staked on the ground based on existing monumentation and/or physical evidence found in the field and is correct to the best of my knowledge, information and belief.

NOTES

- 1.) Horizontal coordinates based on NGS control point "SNOW" and vertical datum based on NGS control point "G 209" with an elevation of 4955.32. NAVD 1988.
 - 2.) All directions, distances, and dimensions shown hereon are based on coordinates from the "Colorado coordinate system of 1983 north zone" (article 52 of title 38, C.R.S.).
 - 3.) All section line dimensions shown hereon are based on field measurements of existing monuments and/or physical evidence found in the field unless otherwise indicated. Refer to land survey plats deposited in Weld County.
 - 4.) Physical features shown hereon are for graphical representation only.
 - 5.) See Form 2A for visible improvements within 400' of wellhead.
 - 6.) Distances to nearest section lines are measured perpendicularly.
 - 7.) This is not a land survey nor land survey plat.
 - 8.) Date of Survey 4/12/11; Date of Drawing 4/13/11. REV 0
- PDOP Reading: 1.5 Instrument Operator: George Allen



GEO SURV

LAND SURVEYING AND MAPPING
LAFAYETTE - WINTER PARK
Ph 303 666 0379 Fx 303 665 6320

CARRIZO OIL & GAS, INC
PERGAMOS 3-44-7-60

SL SE1/4 SE1/4 SEC. 3 T7N R60W
HL TD NW1/4 NW1/4 SEC. 3 T7N R60W
6th PM WELD COUNTY COLORADO