

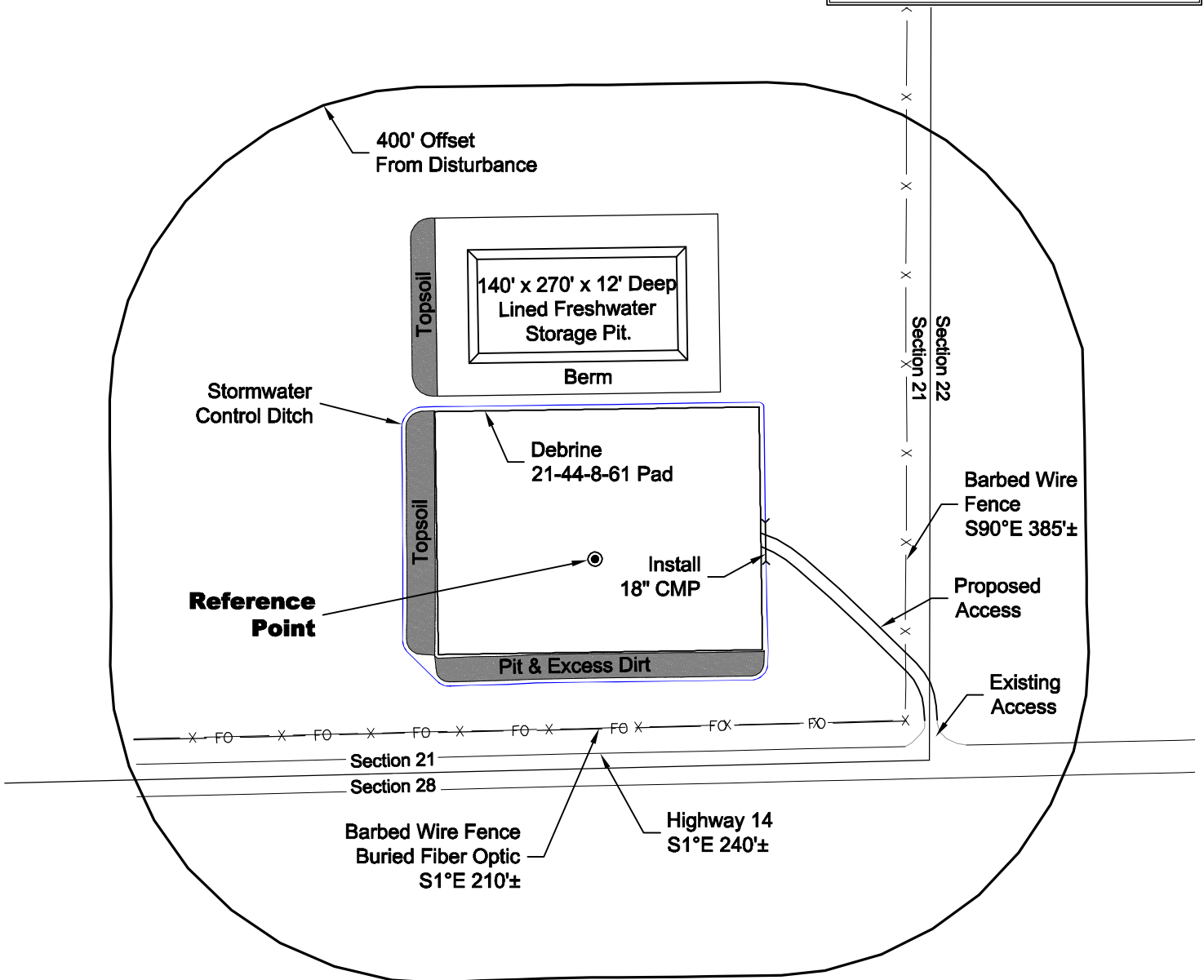
LOCATION DRAWING

VEGETATION:
DRY LAND PASTURE

SURFACE USE:
GRAZING

REFERENCE POINT

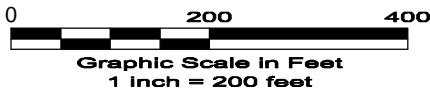
LATITUDE: 40.64073
LONGITUDE: -104.20300
FOOTAGE: 258 FSL 413 FEL
GROUND ELEVATION: 5000.2
PDOP: 1.6 DATE: 6/8/2011
INSTRUMENT OPERATOR: MARC WOODARD



DWC: G:\GEO SURV\WeldzNorth\Carrizo 110004\Wellplats\Debrine 21-44-8-61\Debrine 21-44-8-61\F2A.dwg USER: MTC DATE: Jun 10, 2011 8:49am



North



DISTURBANCE ACREAGE:
4.1± DRILLING OPERATIONS
2.0± FRESHWATER STORAGE PIT
1.0± INTERIM RECLAIM

NOTE:
ALL PRODUCTION FACILITIES WILL BE ON PAD.

6/10/11

LAND SURVEYING AND MAPPING
LAFAYETTE - WINTER PARK
Ph 303 666 0379 Fx 303 665 6320

CARRIZO OIL & GAS, INC
DEBRINE 21-44-8-61 PAD

SE1/4 SE1/4 SEC. 21 T8N R61W
6th PM WELD COUNTY COLORADO