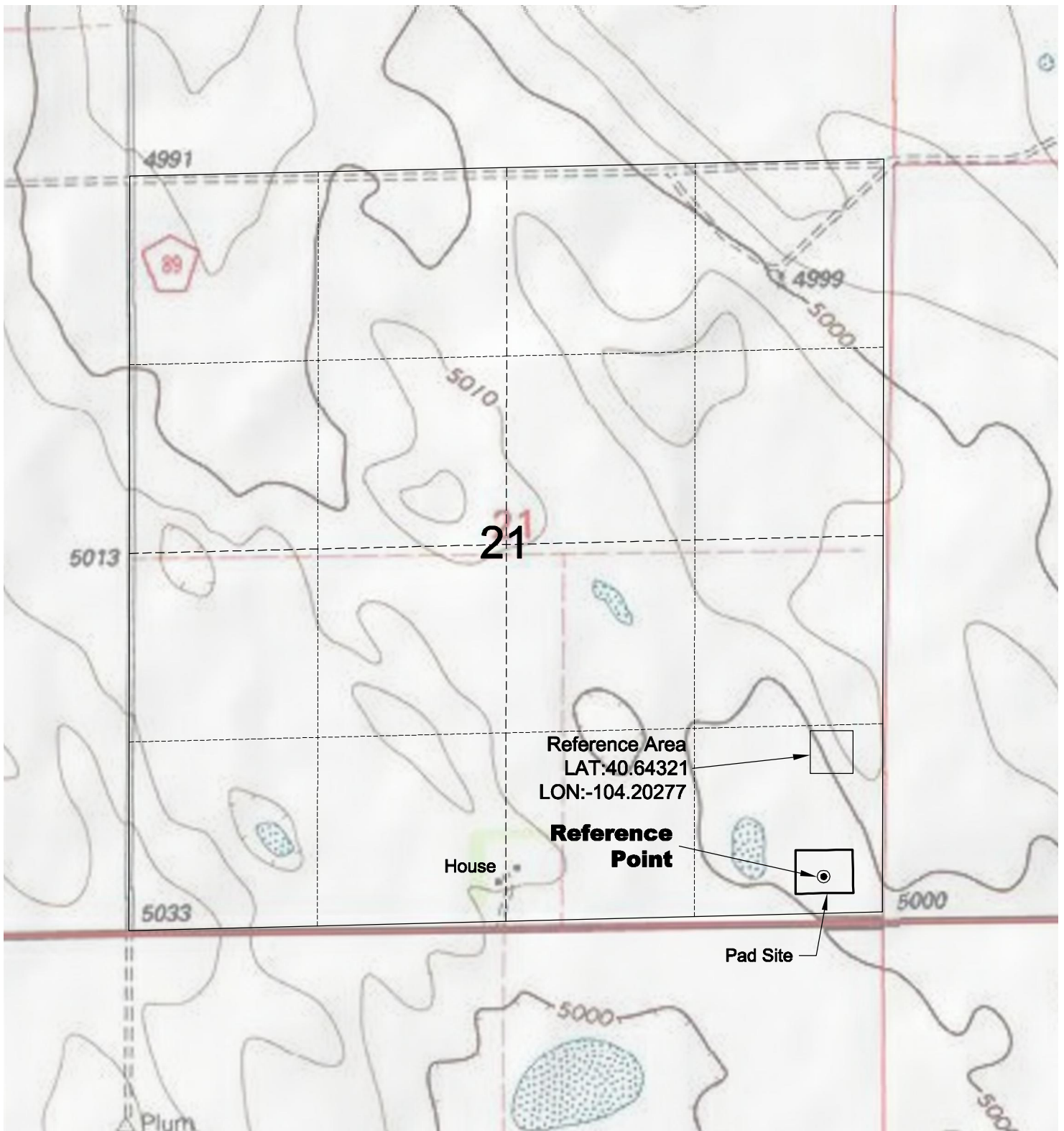
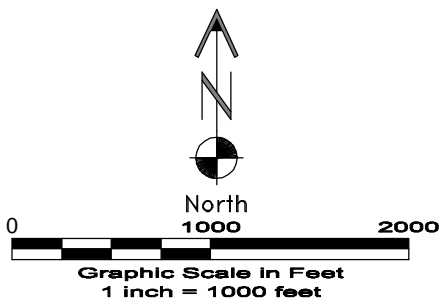


REFERENCE AREA MAP



DWG: G:\GEO SURV\Weld\North\Carrizo 110004\Wellplate\Debrine 21-44-8-61\Debrine 21-44-8-61 F2A.dwg USER: MTC DATE: Jun 10, 2011 8:53am



6/10/11

GEO SURV

LAND SURVEYING AND MAPPING
LAFAYETTE - WINTER PARK
Ph 303 666 0379 Fx 303 665 6320

CARRIZO OIL & GAS, INC
DEBRINE 21-44-8-61 PAD

SE1/4 SE1/4 SEC. 21 T8N R61W
6th PM WELD COUNTY COLORADO