

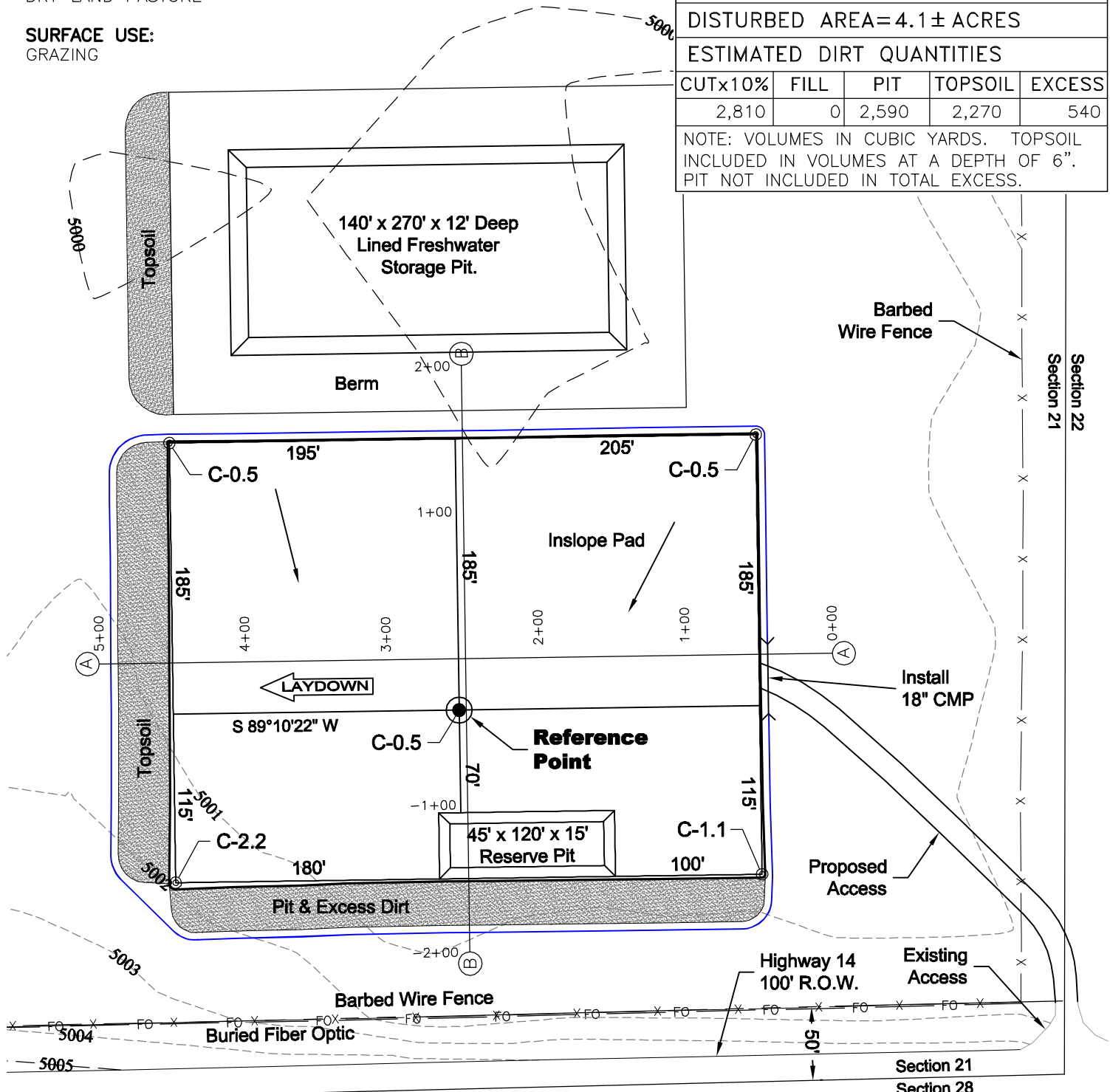
CONSTRUCTION LAYOUT DRAWING

1 of 2

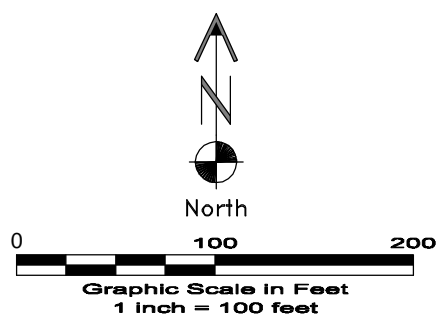
VEGETATION:
DRY LAND PASTURE

SURFACE USE:
GRAZING

| PAD 300'X400' ELEV= 4999.7' | | | | |
|---|------|-------|---------|--------|
| DISTURBED AREA= 4.1± ACRES | | | | |
| ESTIMATED DIRT QUANTITIES | | | | |
| CUTx10% | FILL | PIT | TOPSOIL | EXCESS |
| 2,810 | 0 | 2,590 | 2,270 | 540 |
| NOTE: VOLUMES IN CUBIC YARDS. TOPSOIL INCLUDED IN VOLUMES AT A DEPTH OF 6". PIT NOT INCLUDED IN TOTAL EXCESS. | | | | |



DWG: G:\GEO SURV\Weld\North\Carrizo 110004\Weld\Debrine 21-44-8-61\Debrine 21-44-8-61\F2A.dwg USER: MTC DATE: Jun 10, 2011 8:55am



6/10/11

LAND SURVEYING AND MAPPING
LAFAYETTE - WINTER PARK
Ph 303 666 0379 Fx 303 665 6320

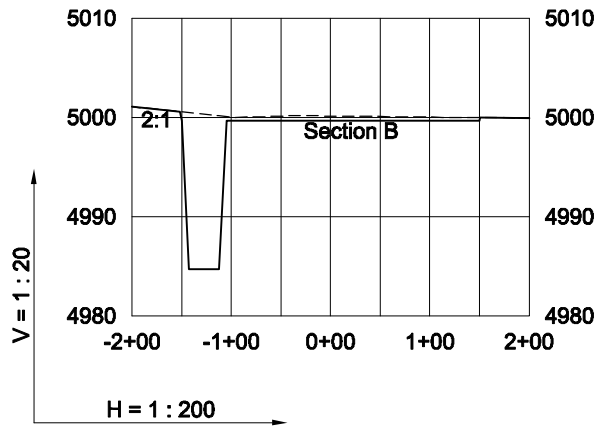
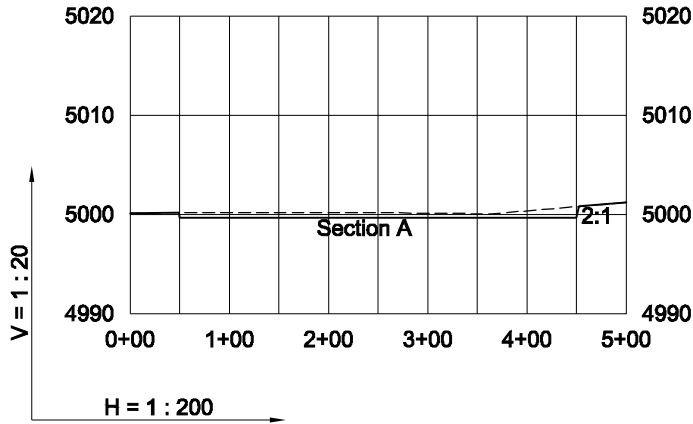
NOTE:
10% ALLOWANCE IS MADE FOR SOIL EXPANSION.

CARRIZO OIL & GAS, INC
DEBRINE 21-44-8-61 PAD

SE1/4 SE1/4 SEC. 21 T8N R61W
6th PM WELD COUNTY COLORADO

CONSTRUCTION LAYOUT DRAWING

2 of 2



6/10/11

----- Existing Ground
 _____ Proposed Grade

GEO SURV

LAND SURVEYING AND MAPPING
 LAFAYETTE - WINTER PARK
 Ph 303 666 0379 Fx 303 665 6320

CARRIZO OIL & GAS, INC
 DEBRINE 21-44-8-61 PAD

SE1/4 SE1/4 SEC. 21 T8N R61W
6th PM WELD COUNTY COLORADO