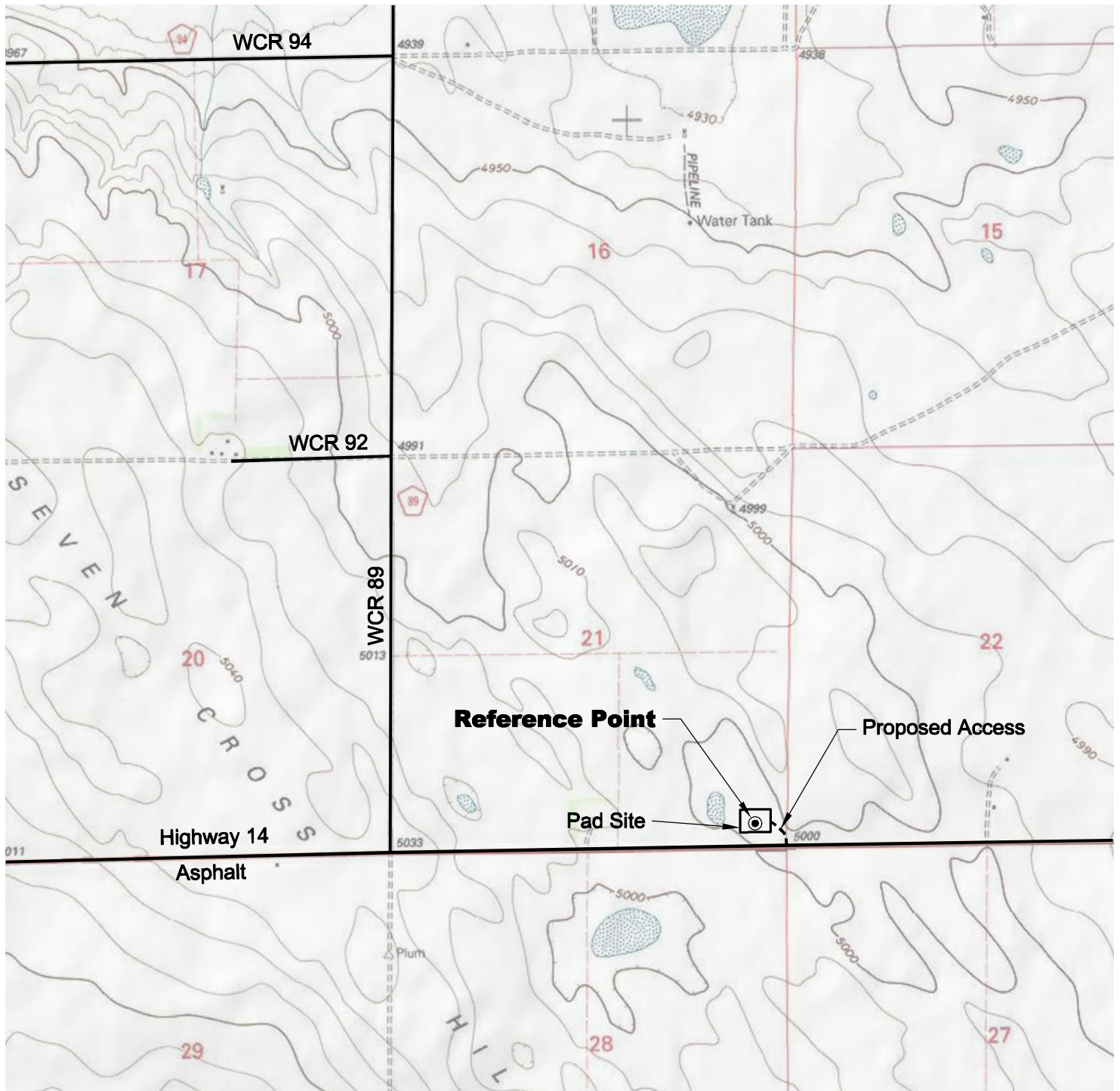


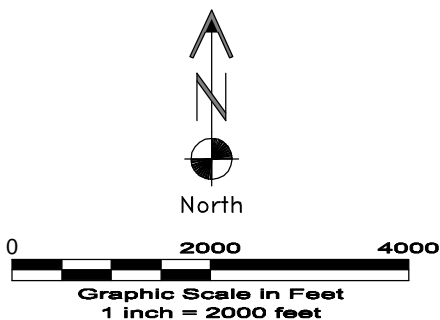
# ACCESS ROAD MAP



## DRIVING DIRECTIONS:

MP 0.0 - Intersection of Highway 14 a.k.a. WCR 90 & Highway 392  
 a.k.a. WCR 77 in Briggsdale; East on Highway 14  
 MP 6.9 - Left on on access to Debrine 21-44-8-61 Pad  
 MP 7.0 - Debrine 21-44-8-61 Pad

6/10/11



**GEO SURV**

LAND SURVEYING AND MAPPING  
 LAFAYETTE - WINTER PARK  
 Ph 303 666 0379 Fx 303 665 6320

**CARRIZO OIL & GAS, INC**  
**DEBRINE 21-44-8-61 PAD**

**SE1/4 SE1/4 SEC. 21 T8N R61W**  
**6th PM WELD COUNTY COLORADO**