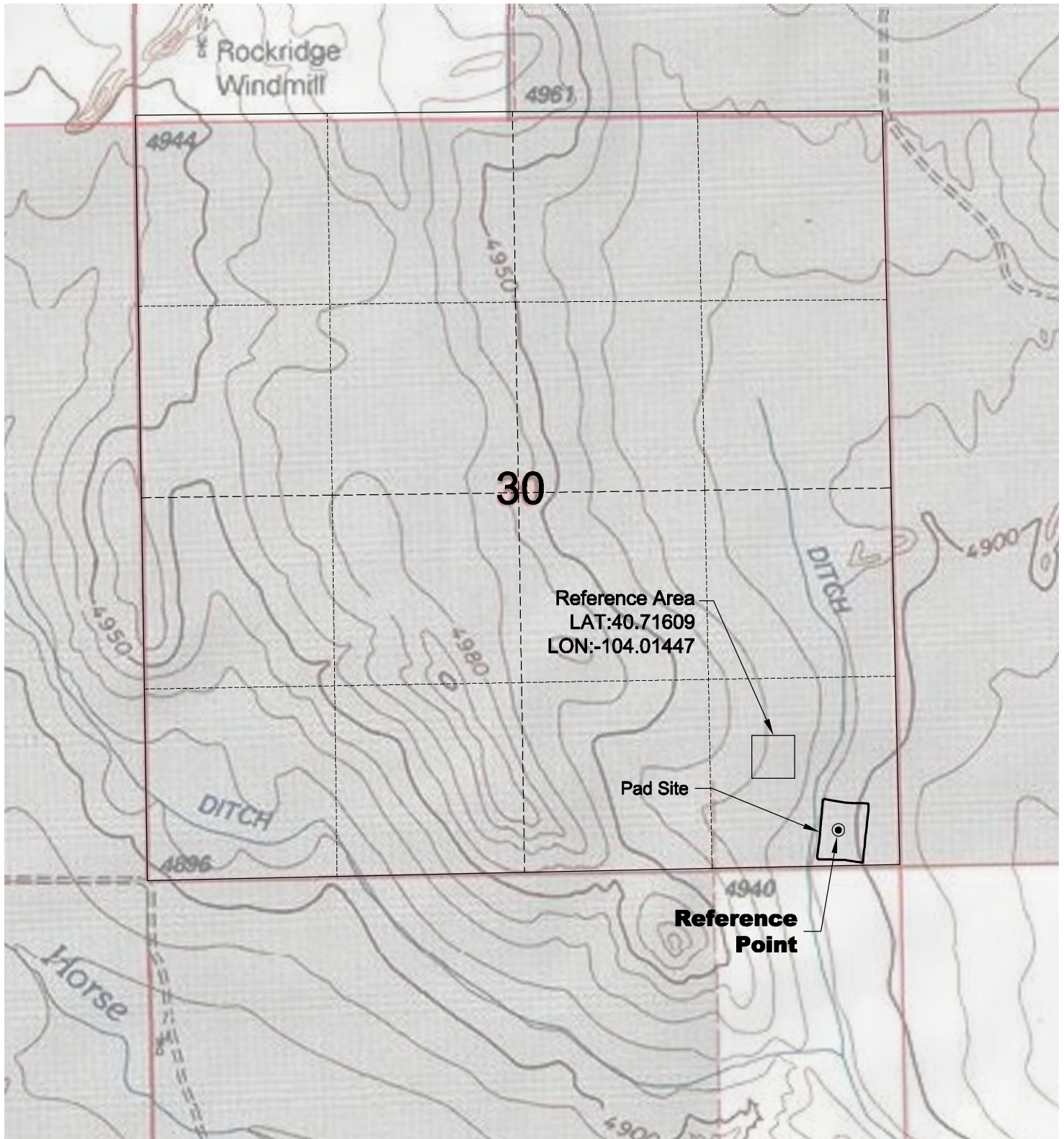
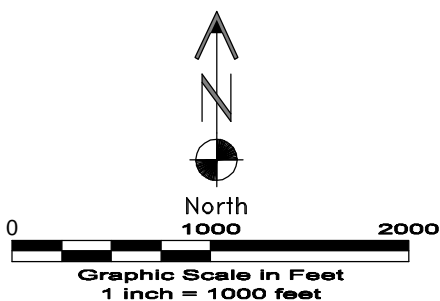


REFERENCE AREA MAP



DWG: G:\GEO SURV\Weld\North\Carrizo 110004\Weld\Plate\30-44-9-59\PTasnik 30-44-9-59\F2A.dwg USER: MTC DATE: Jun 13, 2011 4:44pm



 **GEO SURV** 
LAND SURVEYING AND MAPPING
LAFAYETTE - WINTER PARK
Ph 303 666 0379 Fx 303 665 6320

CARRIZO OIL & GAS, INC
PTASNIK 30-44-9-59 PAD

SE1/4 SE1/4 SEC. 30 T9N R59W
6th PM WELD COUNTY COLORADO

6/13/11