

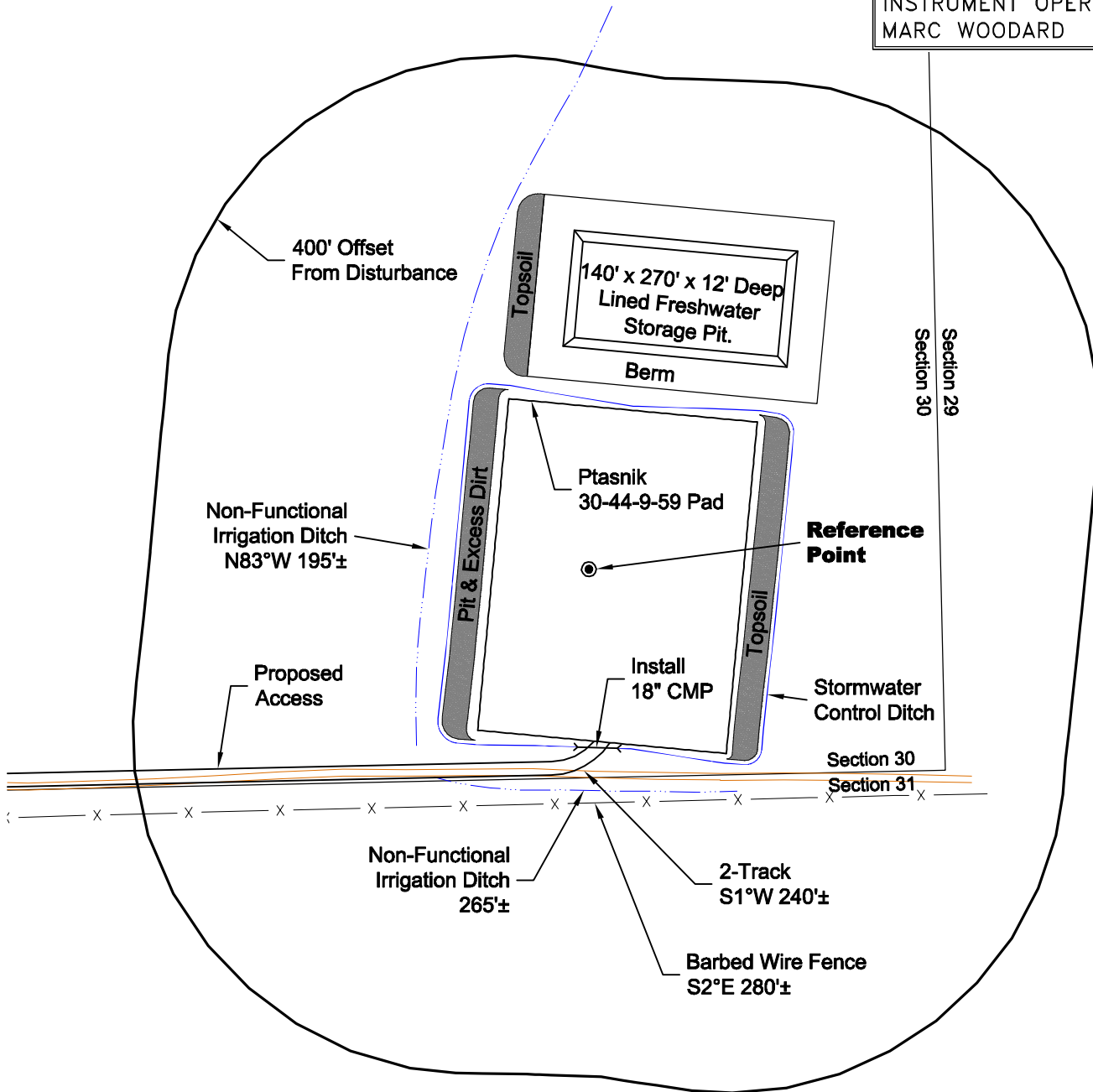
LOCATION DRAWING

VEGETATION:
GRASSLAND PASTURE

SURFACE USE:
GRAZING

REFERENCE POINT

LATITUDE: 40.71472
LONGITUDE: -104.01289
FOOTAGE: 250 FSL 423 FEL
GROUND ELEVATION: 4905.9
PDOP: 2.2 DATE: 6/10/2011
INSTRUMENT OPERATOR: MARC WOODARD



Non-Functional
Irrigation Ditch
265'±

Barbed Wire Fence
S2°E 280'±

DISTURBANCE ACREAGE:
4.1± DRILLING OPERATIONS
2.0± FRESHWATER STORAGE PIT
1.0± INTERIM RECLAIM

NOTE:
ALL PRODUCTION FACILITIES WILL BE ON PAD.

6/13/11



0 200 400
Graphic Scale in Feet
1 inch = 200 feet



LAND SURVEYING AND MAPPING
LAFAYETTE - WINTER PARK
Ph 303 666 0379 Fx 303 665 6320

CARRIZO OIL & GAS, INC
PTASNIK 30-44-9-59 PAD

SE1/4 SE1/4 SEC. 30 T9N R59W
6th PM WELD COUNTY COLORADO